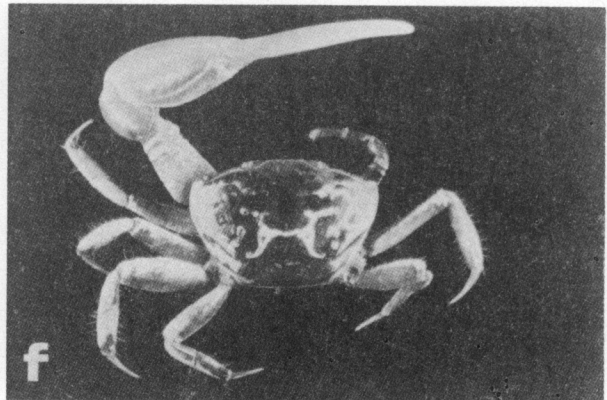
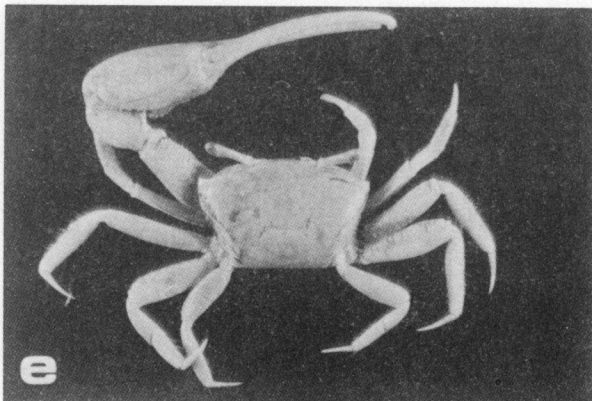
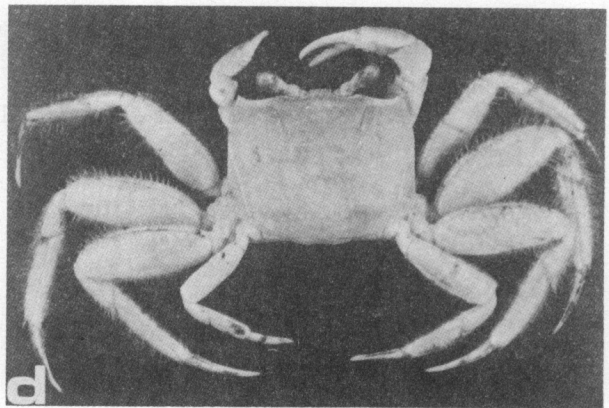
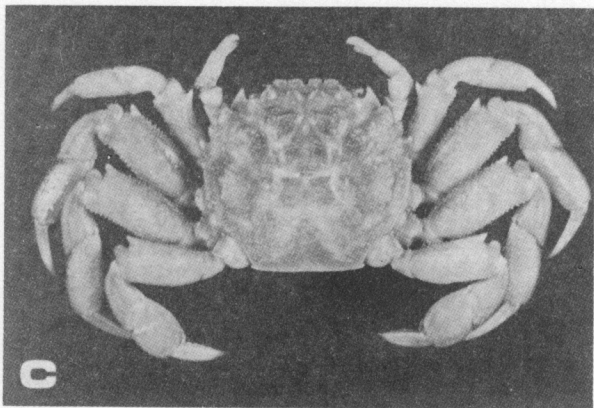
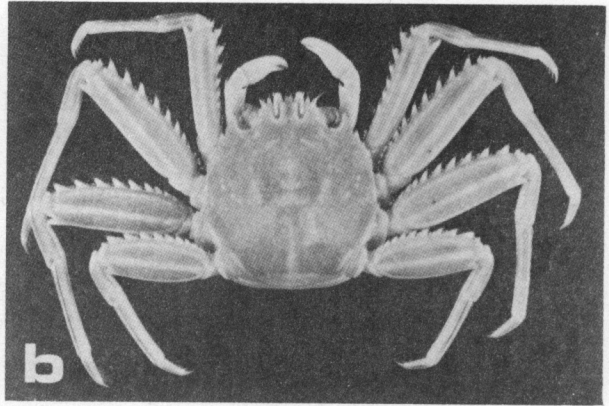
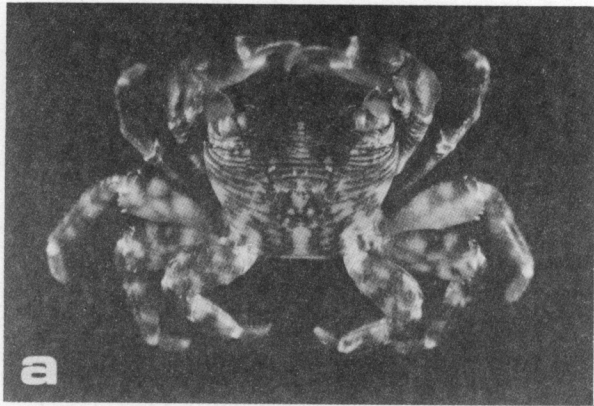


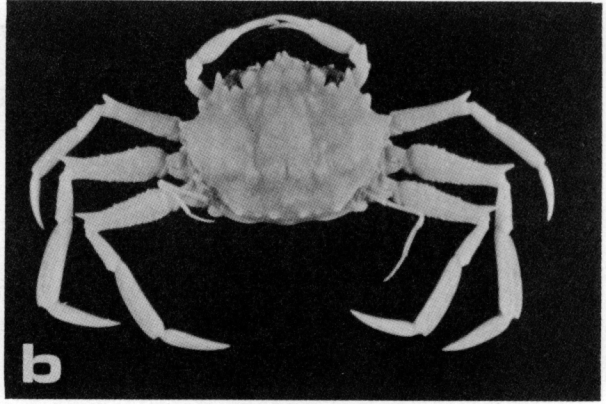
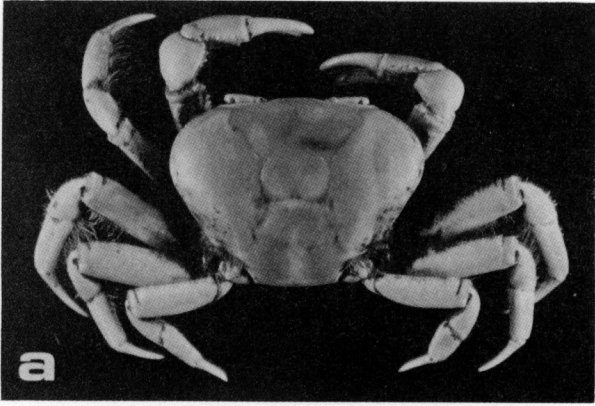
LAMINA 15

- a.- *Armases cinereum* (Bosc, 1802) ♂, 17.2 x 19.2 mm, SMIOM-03305.
- b.- *Armases ricordi* (H. Milne-Edwards, 1853) ♂, 14.5 x 15.3 mm, SMIOM-FCUNAM-01302.
- c.- *Cyclograpsus integer* H. Milne-Edwards, 1837 ♂, 10.7 x 13.8 mm, SMIOM-FCUNAM-01522.
- d.- *Geograpsus lividus* (H. Milne Edwards, 1837) ♂, 25.3 x 31.0 mm, SMIOM-FCUNAM-01467.
- e.- *Goniopsis cruentata* (Latreille, 1802) ♂, 40.1 x 46.8 mm, SMIOM-FCUNAM-01291.
- f.- *Grapsus grapsus* (Linnaeus, 1758) ♀, 28.3 x 31.2 mm, SMIOM-FCUNAM-01277.



LAMINA 16

- a.- *Pachygrapsus transversus* (Gibbes, 1850) ♂, 13.7 x 17.9 mm, SMIOM-FCUNAM-01435.
- b.- *Percnon gibbesi* (H. Milne Edwards, 1853) ♂, 26.6 x 22.2 mm, SMIOM-FCUNAM-01520.
- c.- *Platychirograpsus spectabilis* Man, 1896 oví, 36.2 x 41.5 mm, SMIOM-FCUNAM-01295.
- d.- *Ocypode quadrata* (Fabricius, 1787) ♂, 24.8 x 31.0 mm, SMIOM-FCUNAM-01259.
- e.- *Uca marguerita* Thurman, 1981 ♂, 11.1 x 17.1 mm, SMIOM-FCUNAM-01298.
- f.- *Uca vocator vocator* (Herbst, 1804) ♂, 15.2 x 22.0 mm, SMIOM-04030.



LAMINA 17

- a.- *Ucides cordatus* (Linnaeus, 1763) ♂, 33.0 x 44.5 mm, SMIOM-FCUNAM-01297.
- b.- *Palicus obesus* (A. Milne-Edwards, 1880) ♂, 15.9 x 21.0 mm, SMIOM-ICMyLUNAM-03555.