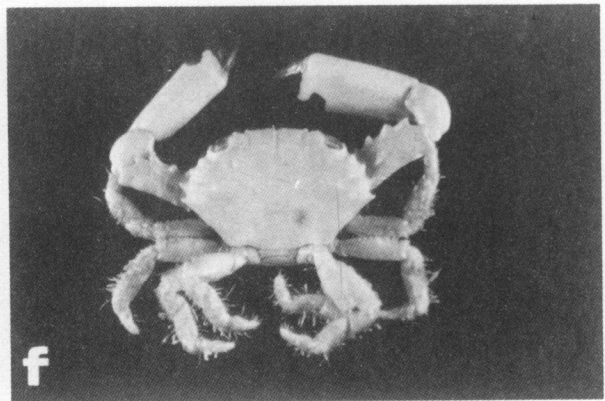
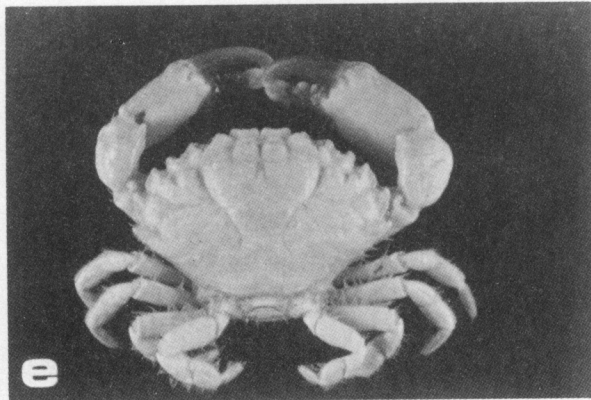
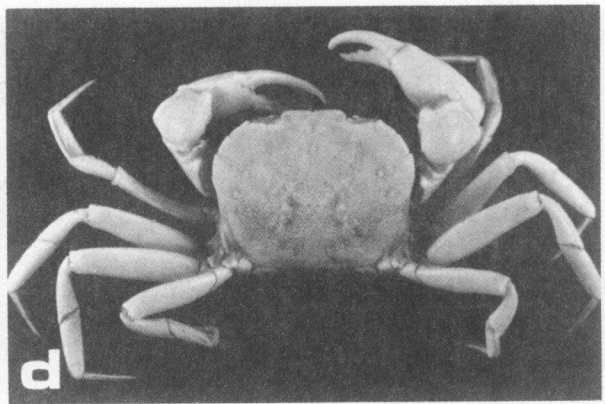
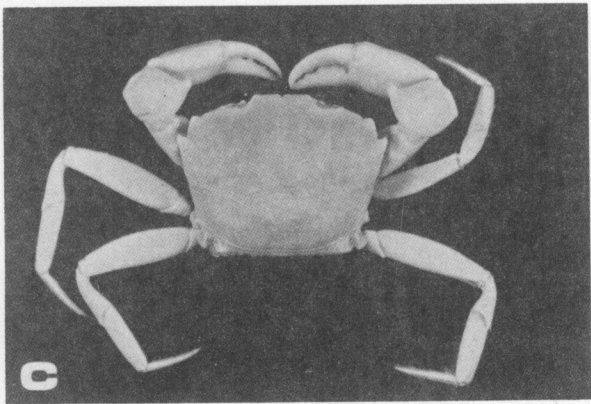
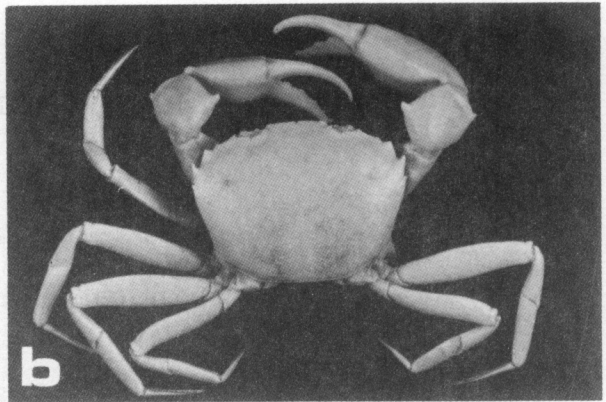
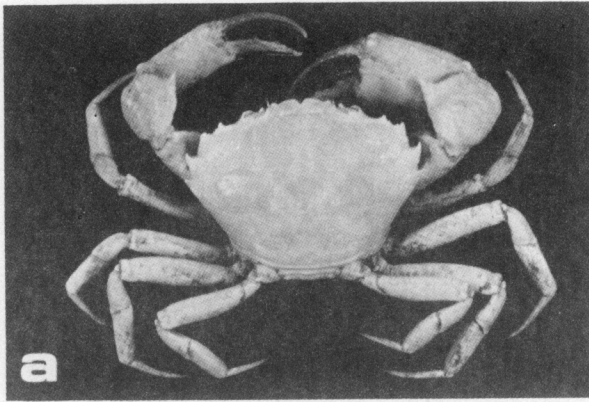


LAMINA 9

- a.- *Portunus gibbesii* (Stimpson, 1859) ♂, 18.6 x 32.1 mm, SMIOM-02996.
- b.- *Portunus ordwayi* (Stimpson, 1860) ♂, 25.3 x 39.8 mm, SMIOM-00156.
- c.- *Portunus sayi* (Gibbes, 1850) ♀, 11.0 x 19.7 mm, SMIOM-FCUNAM-03189.
- d.- *Portunus sebae* (H. Milne-Edwards, 1834) ♂, 29.4 x 55.0 mm, SMIOM-FCUNAM-01274.
- e.- *Portunus spinicarpus* (Stimpson, 1871) ♂, 23.8 x 53.8 mm, SMIOM-00339.
- f.- *Portunus spinimanus* Latreille, 1819 ♂, 43.3 x 73.5 mm, SMIOM-00315.



LAMINA 10

- a.- *Euphrosynoplax campechiensis* Vázquez-Bader y Gracia, 1991 ♂, 30.1 x 42.1 mm, SMIOM-ICMyLUNAM-01664.
- b.- *Pseudorhombila guinotae* Hernández-Aguilera, 1982 ♂, 29.0 x 38.3 mm, SMIOM-00304.
- c.- *Pseudorhombila ometlanti* Vázquez-Bader y Gracia, 1995 ♂, 26.5 x 35.3 mm, SMIOM-ICMyLUNAM-04065.
- d.- *Speocarcinus lobatus* Guinot, 1969 ♂, 11.7 x 14.9, SMIOM-00627.
- e.- *Cataleptodius floridanus* (Gibbes, 1850) ♂, 23.5 x 35.5 mm, SMIOM-01152.
- f.- *Chlorodiella longimana* (H. Milne-Edwards, 1834) ♂, 7.6 x 11.8 mm, SMIOM-03992.