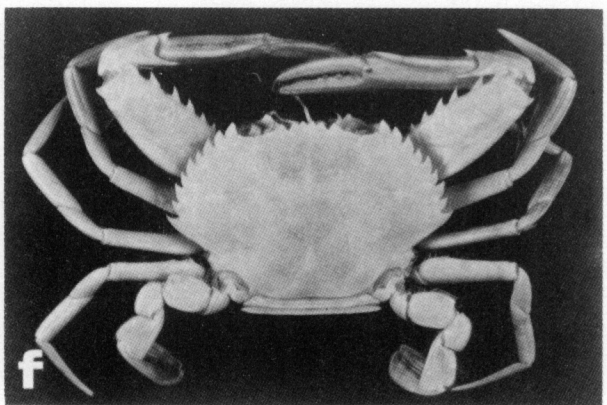
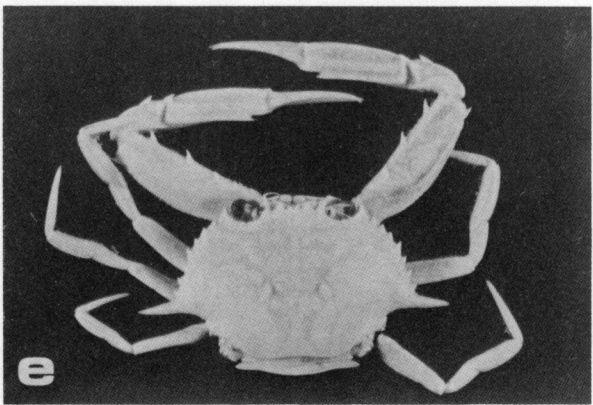
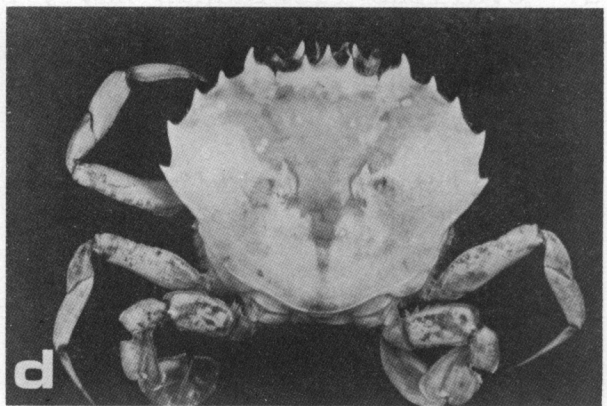
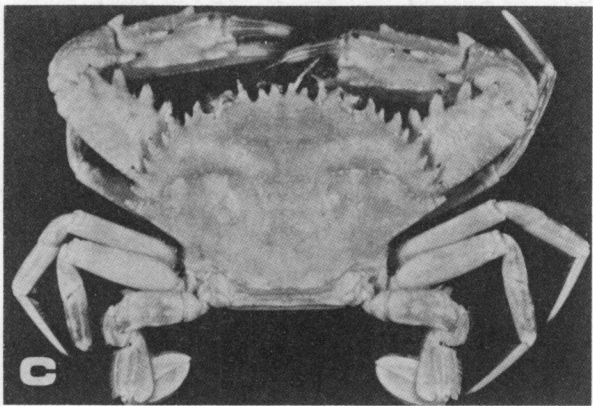
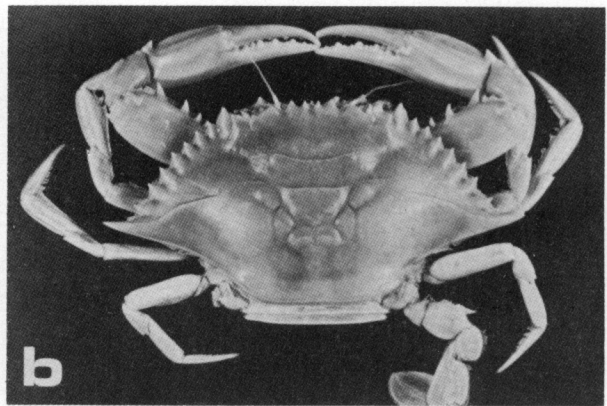
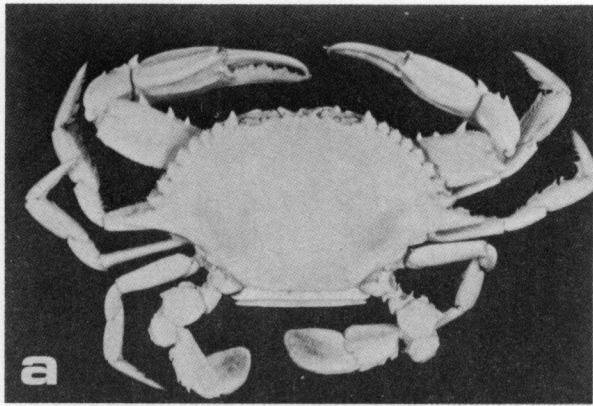


LAMINA 7

- a.- *Stenorhynchus yangi* Goeke, 1989 ♀, 47.0 x 15.7 mm, SMIOM-00564.
- b.- *Leiolambrus nitidus* Rathbun, 1901 ♂, 12.6 x 18.7 mm, SMIOM-03318.
- c.- *Parthenope serrata* (H. Milne Edwards, 1834) ♂, 16.0 x 19.5 mm, SMIOM-00161.
- d.- *Arenaeus cribrarius* (Lamarck, 1818) ♂, 57.5 x 125.0 mm, SMIOM-00294.
- e.- *Callinectes larvatus* Ordway, 1863 ♂, 40.2 x 93.8 mm, SMIOM-03171.
- f.- *Callinectes sapidus* Rathbun, 1896 ♀, 61.4 x 149.5 mm, SMIOM-00634.



LAMINA 8

- a.- *Callinectes similis* Williams, 1966 ♂, 39.0 x 77.5 mm, SMIOM-00316.
- b.- *Callinectes rathbunae* Contreras, 1930 ♂, 41.5 x 85.9 mm, SMIOM-00400.
- c.- *Cronius ruber* (Lamarck, 1818) ♂, 48.5 x 76.5 mm, SMIOM-01165.
- d.- *Ovalipes floridanus* Hay y Shore, 1918 ♂, 47.3 x 62.0 mm, SMIOM-00410.
- e.- *Portunus anceps* (Saussure, 1858) ♂, 12.5 x 25.7 mm, SMIOM-03472
- f.- *Portunus depressifrons* (Stimpson, 1859) ♂, 21.2 x 33.8 mm, SMIOM-01159.