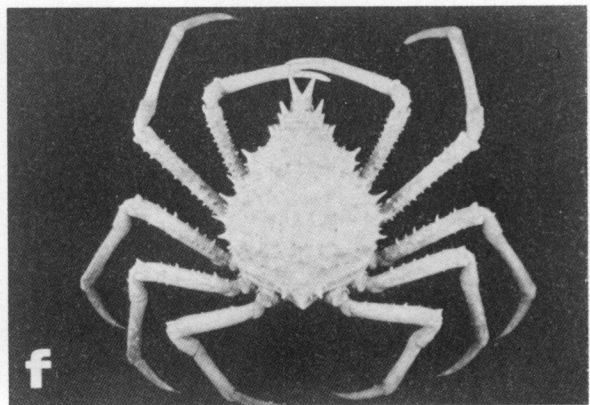
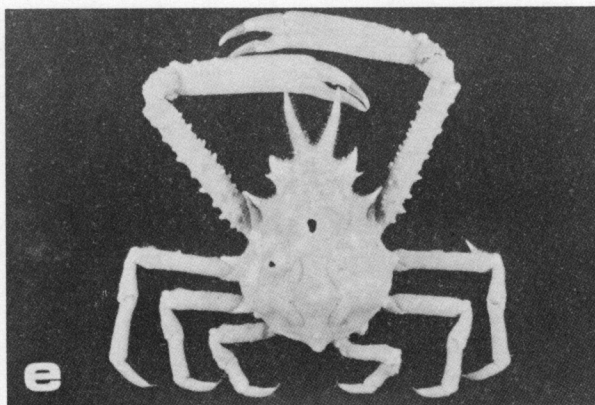
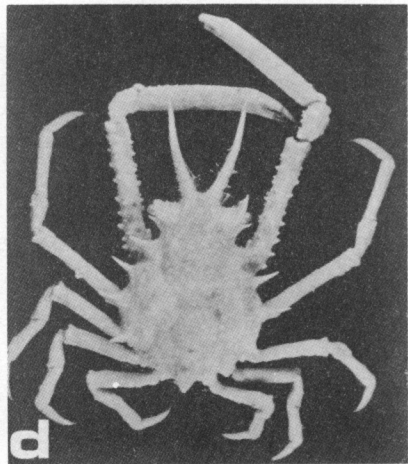
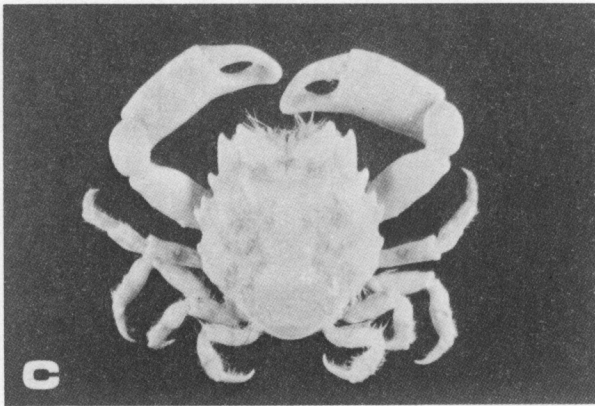
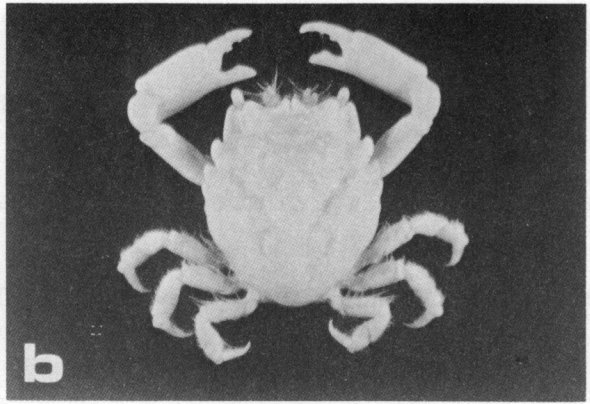
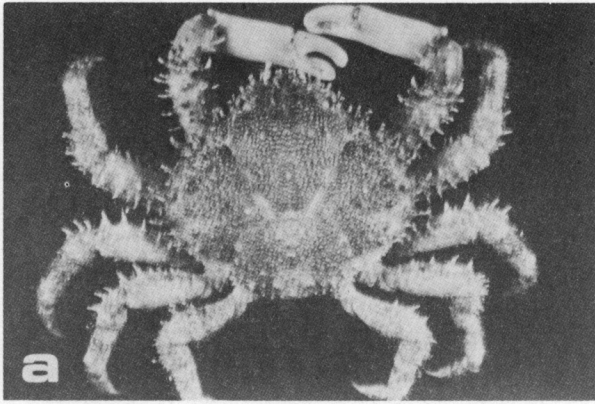


LAMINA 5

- a.- *Macrocoeloma trispinosum* variedad oví, 32.6 x 31.5 mm, SMIOM-03539.
- b.- *Mithrax coryphe* (Herbst, 1801) ♂, 15.9 x 20.5 mm, SMIOM-FCUNAM-03234.
- c.- *Metoporhaphis calcarata* (Say, 1818) oví, 11.8 x 10.3 mm, SMIOM-ICMyLUNAM-03328.
- d.- *Mithrax forceps* (A. Milne Edwards, 1875) ♂, 22.3 x 26.7 mm, SMIOM-FCUNAM-01236.
- e.- *Mithrax hispidus* (Herbst, 1790) ♂, 28.6 x 35.0 mm, SMIOM-01133.
- f.- *Mithrax ruber* (Stimpson, 1871) ♂, 13.5 x 11.2 mm, SMIOM-03972.



LAMINA 6

- a.- *Mithrax verrucosus* H. Milne Edwards, 1832 ♂, 40.0 x 51.0 mm, SMIOM-03775.
- b.- *Pitho aculeata* (Gibbes, 1850) ♂, 13.8 x 12.1 mm, SMIOM-FCUNAM-03271.
- c.- *Pitho lherminieri* (Schramm, 1867) ♂, 23.9 x 22.4 mm, SMIOM-03290.
- d.- *Stenocionops furcata coelata* (A. Milne Edwards, 1878) ♂, 101.0 x 64.4 mm, SMIOM-03293.
- e.- *Stenocionops furcata furcata* (Olivier, 1791) ♂, 123.5 x 69.5 mm, SMIOM-00660.
- f.- *Stenocionops spinimana* Rathbun, 1892 oví, 96.3 x 71.7 mm, SMIOM-ICMyLUNAM-03355.