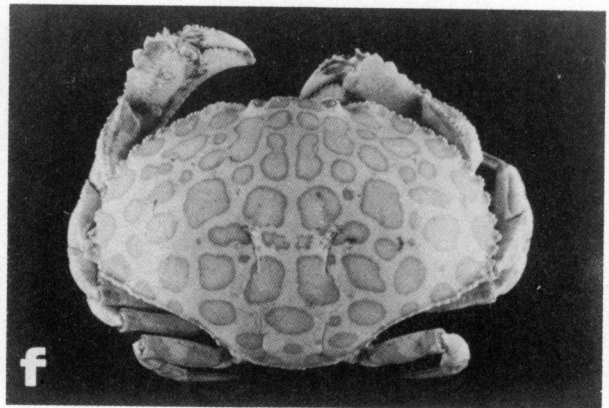
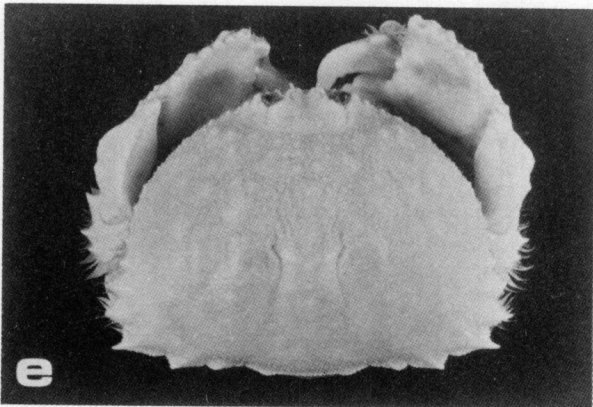
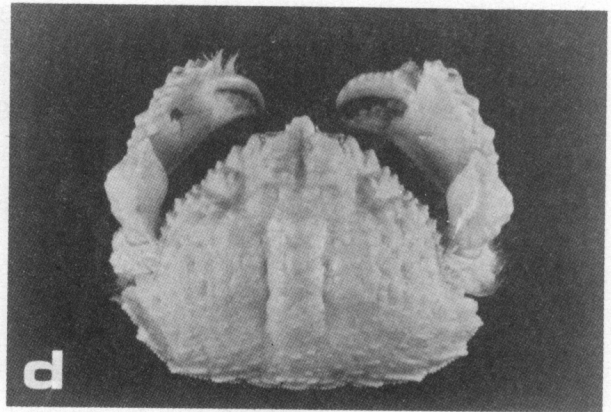
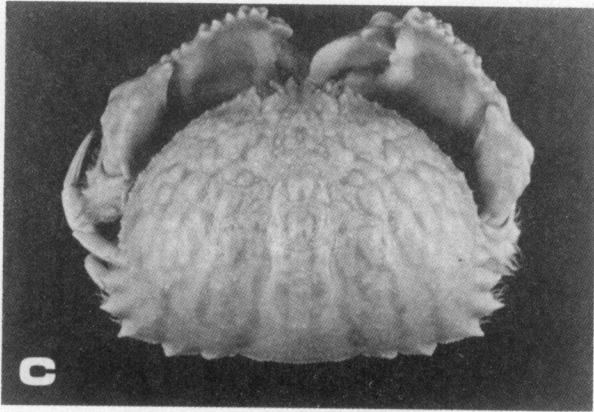
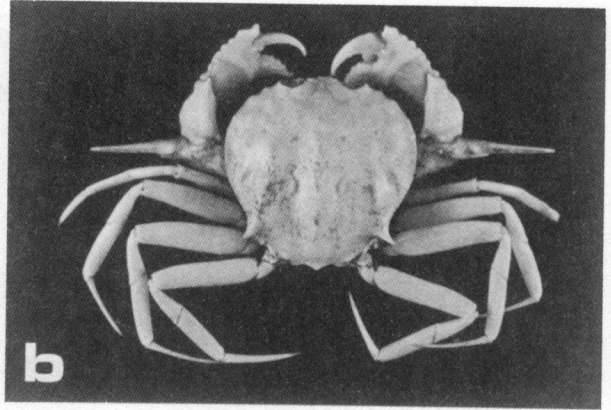
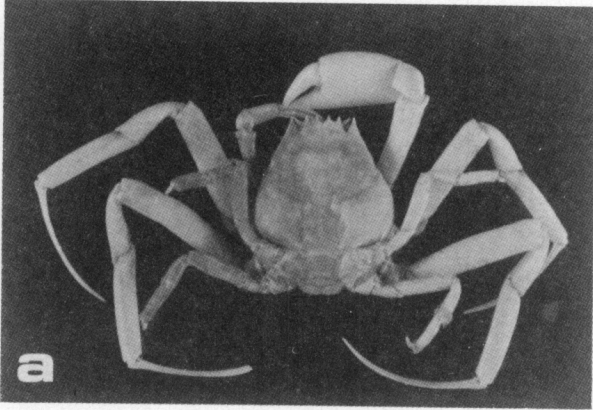


LAMINA 1

- a.- *Cryptodromiopsis antillensis* (Stimpson, 1858) ♂, 39.3 x 38.2 mm, SMIOM-00388.
- b.- *Dromia erythropus* G. Edwards, 1771, ♀, 75.0 x 93.5 mm, SMIOM 03373.
- c.- *Raninoides loevis* (Latreille, 1825), ♂, 35.5 x 19.6 mm, SMIOM-00126.
- d.- *Raninoides louisianensis* Rathbun, 1933 oví., 35.3 x 19.6 mm, SMIOM-00358.
- e.- *Symethis variolosa* (Fabricius, 1793) ♂, 16.0 x 10.7 mm, SMIOM-03549.
- f.- *Ethusa americana* A. Milne-Edwards, 1880 oví, 11.4 x 9.8 mm, SMIOM-00162.



LAMINA 2

- a.- *Ethusa microphthalma* Smith, 1881 ♂, 22.6 x 23.0 mm, SMIOM-ICMyLUNAM-03614.
- b.- *Acanthocarpus alexandri* Stimpson, 1871 ♀, 30.2 x 30.0 mm, SMIOM-ICMyLUNAM-03541.
- c.- *Calappa flammea* (Herbst, 1794) ♂, 48.0 x 69.0 mm, SMIOM-FCUNAM-01452.
- d.- *Calappa gallus* (Herbst, 1803) ♂, 40.6 x 52.6 mm, SMIOM-FCUNAM-03286.
- e.- *Calappa sulcata* Rathbun, 1898 ♀, 44.0 x 63.0 mm, SMIOM-ICMyLUNAM-03320.
- f.- *Hepatus epheliticus* (Linnaeus, 1763) ♀, 68.2 x 102.2 mm, SMIOM-ICMyLUNAM-00322.