

Fig. 15 - *Palaemon vesolensis* n. sp., holotype, n. cat. A4491/8, photo and reconstruction ( $\times 5$ ).

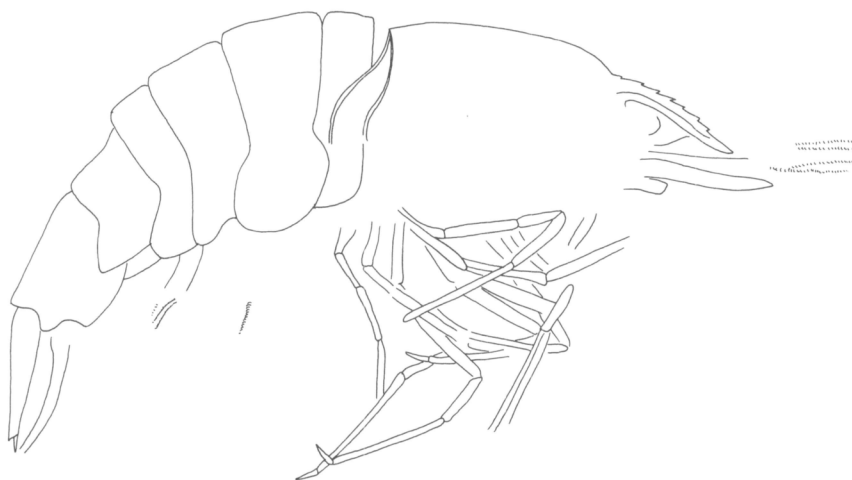


Fig. 16 - *Palaemon vesolensis* n. sp., n. cat. A4491/1, photo and reconstruction ( $\times 8$ ).

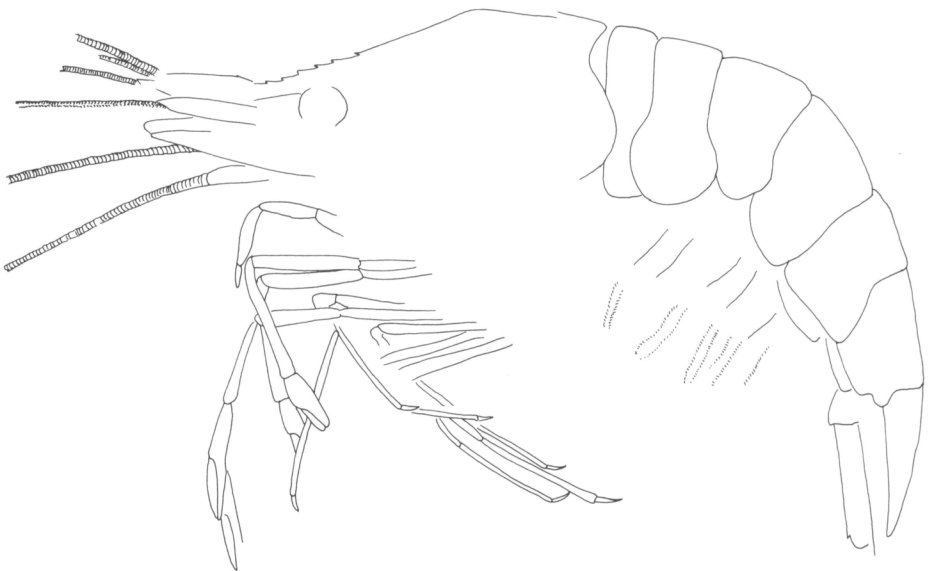
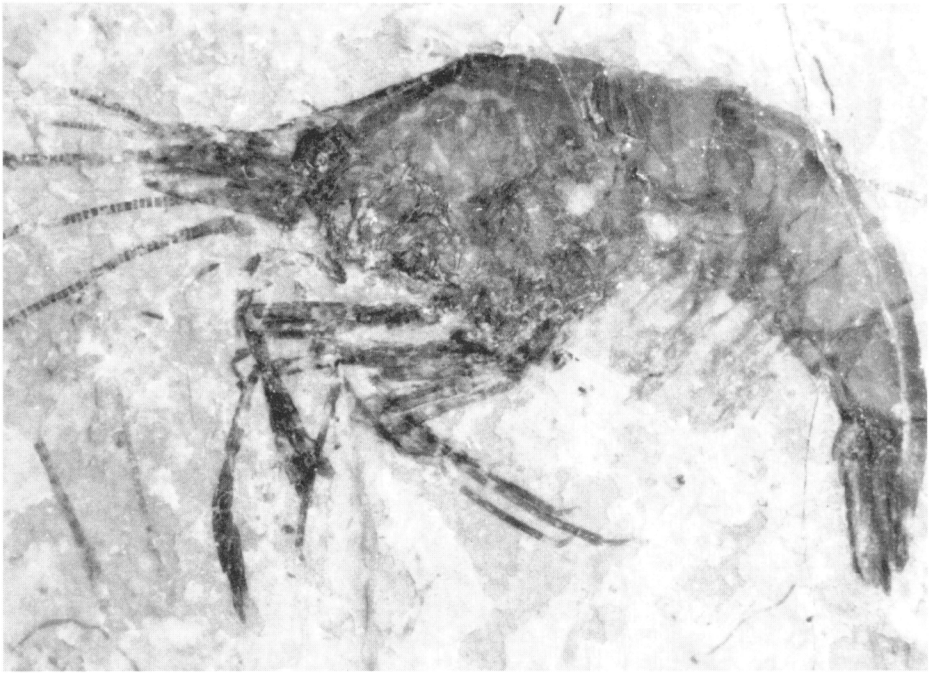


Fig. 17 - *Palaemon vesolensis* n. sp., n. cat. A4491/19, photo and reconstruction ( $\times 4$ ).