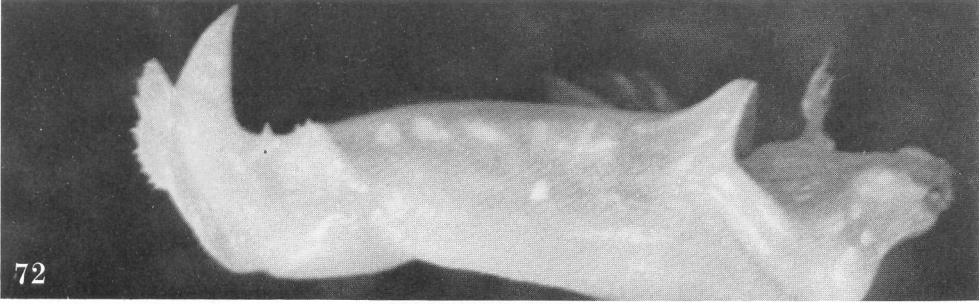
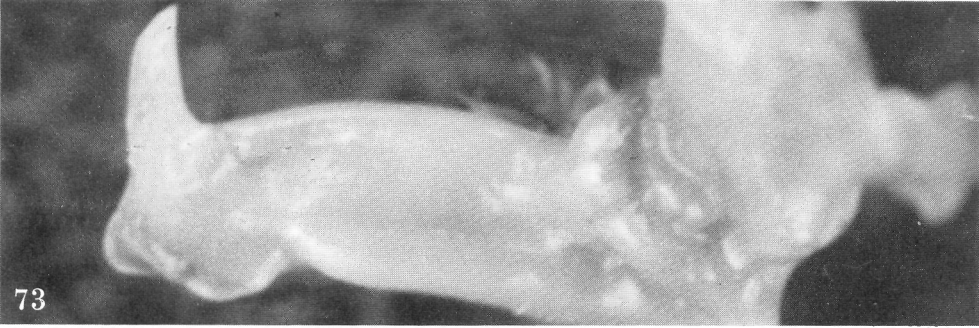




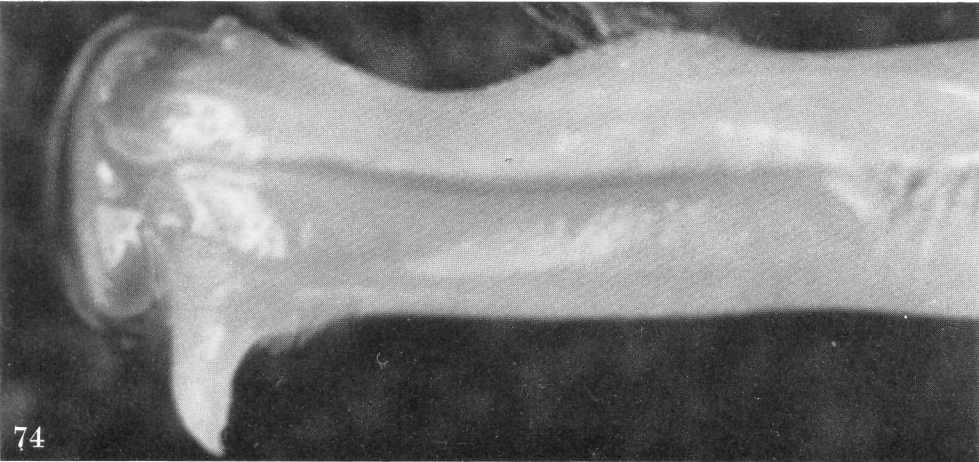
P. (T.) lamellifrons
poglayanorum



P. (Z.) zilchi germani



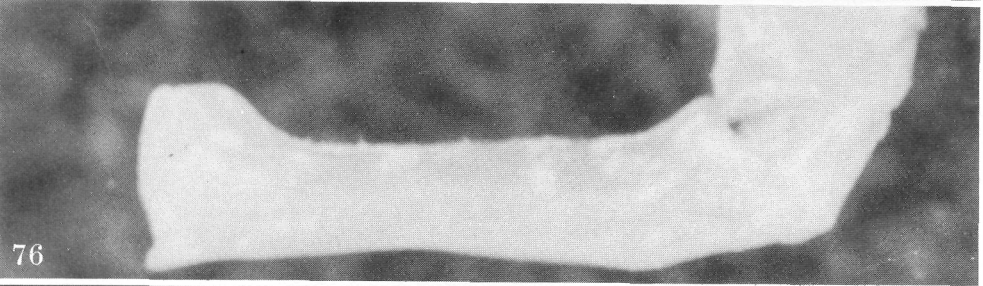
P. (Z.) zilchi ivis



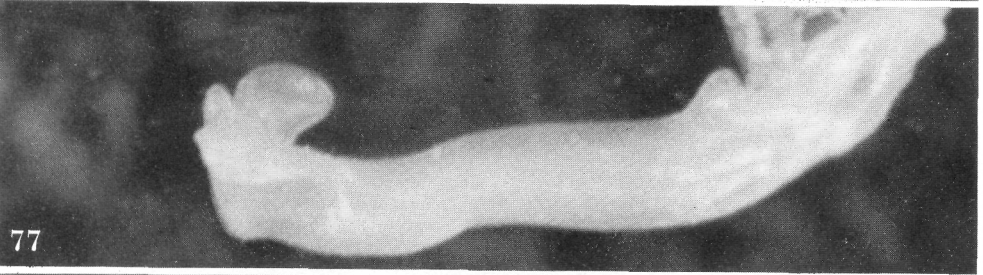
P. (M.) magnus hondurensis



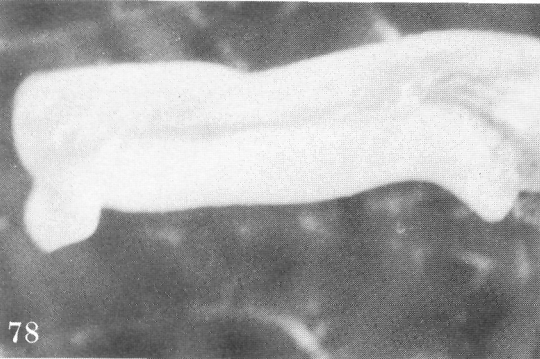
P. (Z.) poglayen-neuwalli



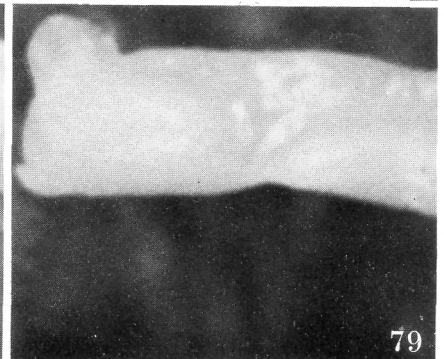
P. (Raddeanus) parasitiki-mexicanus



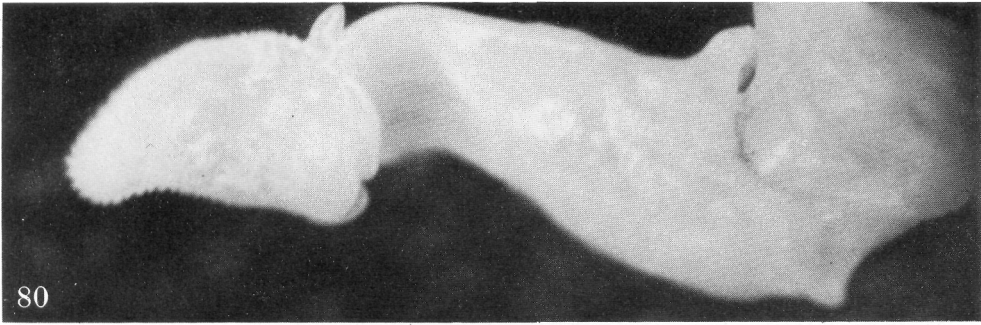
P. (T.) laswelliformis diabolis



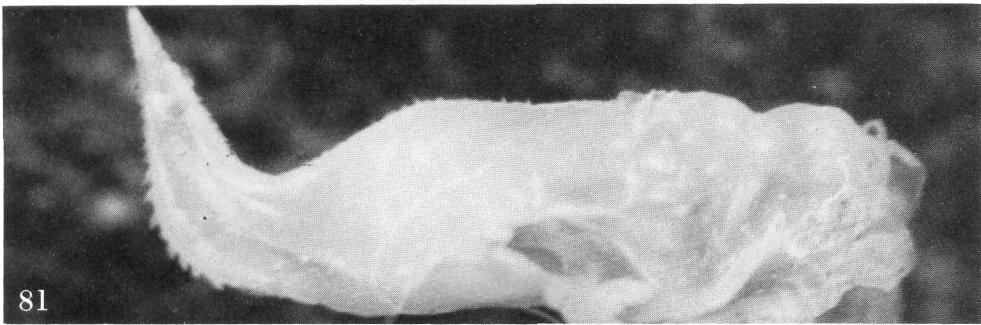
Ptychophallus pittieri



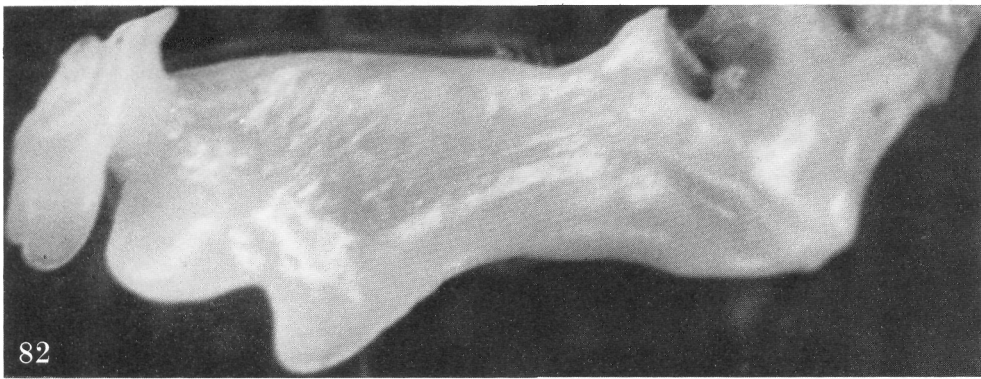
P. pittieri



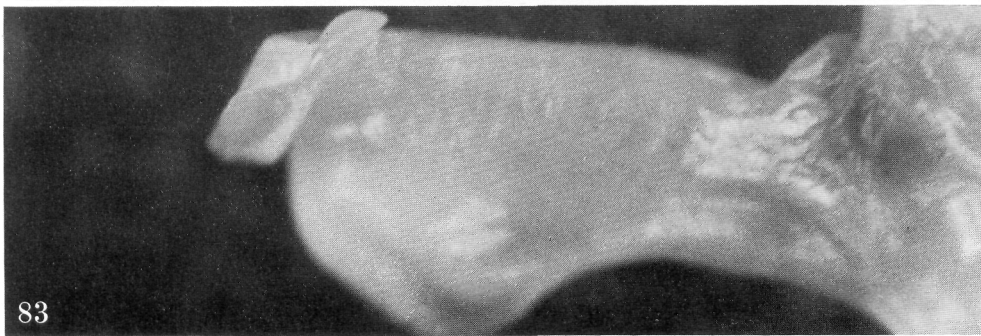
I. (P.) acanthophallus
ibarrae



Austriohodactylus
constrictus



P. (P.) tenuimanus
ingae



P. (P.) oxilipes
lavallensis