

# Papéis Avulsos de Zoologia

Museu de Zoologia da Universidade de São Paulo

Volume 46(19):219-232, 2006

www.scielo.br/paz

ISSN impresso: 0031-1049

ISSN on-line: 1807-0205

## LARVAL DEVELOPMENT OF *NOTOLOPAS BRASILIENSIS* MIERS, 1886 (BRACHYURA: MAJOIDEA: PISIDAE) DESCRIBED FROM LABORATORY REARED MATERIAL AND A REAPPRAISAL OF THE CHARACTERS OF PISIDAE

WILLIAM SANTANA<sup>1</sup>

FERNANDO P.L. MARQUES<sup>2</sup>

ADILSON FRANZOZO<sup>3</sup>

GIOVANA BERTINI<sup>4</sup>

### ABSTRACT

*The complete larval stages of Notolopas brasiliensis are described from laboratory reared material, with emphasis on the external morphological features of Majoidea, and compare the morphology of N. brasiliensis with other genera of Pisidae. Larval development of N. brasiliensis consists of two zoeal stages and one megalopa. The duration mean of each zoeal stage was  $4.2 \pm 1.0$  days for Zoea I and  $3.8 \pm 0.7$  days for Zoea II, the megalopa instar appearing  $8.1 \pm 0.4$  days after hatching. The characters previously used to define larval forms of Pisidae are either symplesiomorphic or potentially highly homoplastic. As well, was observed that there are no common sets of larval characters that would define Pisidae nowadays. However, was showed that only a combination of characters could differentiate Notolopas from other pisid genera.*

KEYWORDS: Larval characters, *Notolopas*, spider crabs, Majidae, Pisidae.

### INTRODUCTION

The understanding of evolutionary relationships amongst crustaceans is largely based on adult morphology, and larvae remain a much neglected source of characters that may help solve relationships among taxa. In few particular cases, larval characters have been shown to be useful in phylogenetic inferences (Clark & Webber,

1991; Baisre, 1994; Marques & Pohle, 1995, 1998, 2003; Pohle & Marques, 1998, 2000; Maas & Włoszek, 2001). However, we are still at the stage of providing well detailed descriptions of larval forms that would allow us to make phylogenetic inferences based on those characters for many higher taxa within Brachyura.

The Majoidea (*sensu* Martin & Davis, 2001) is one of the most diverse groups within Brachyura, with ap-

<sup>1</sup> Museu de Zoologia, Universidade de São Paulo, Caixa Postal 42494-970, 04218-970, São Paulo, SP, Brasil. E-mail: wsantana@ib.usp.br

<sup>2</sup> Instituto de Biociências, Departamento de Zoologia, Universidade de São Paulo, Caixa Postal 11461, 05422-970, São Paulo, SP, Brasil.

<sup>3</sup> Instituto de Biociências, Departamento de Zoologia, Universidade Estadual Paulista, Caixa Postal 510, 18618-000, Botucatu, SP, Brazil.

<sup>4</sup> Unidade Diferenciada de Registro, Universidade Estadual Paulista, 11900-000, Registro, SP, Brazil.

proximately 900 species worldwide (Provenzano & Brownell, 1977). In the Southwest Atlantic this group is represented by approximately 80 species in 45 genera arranged into eight families, in which the family Pisidae is represented by 11 genera with 14 species (Melo, 1996).

The spider crab *Notolopas brasiliensis* Miers, 1886 is known to inhabit sandy, muddy or gravel bottoms from the intertidal region to depths of 30 m on the coasts of the western Atlantic of Colombia, Venezuela and Brazil. In Brazilian waters, this species is distributed from Amapá to São Paulo States (Melo, 1996). The purpose of this study is to describe the complete larval stages of *Notolopas brasiliensis*, reared under laboratory conditions, with emphasis on the external morphological features of Majoidea, and compare the morphology of *N. brasiliensis* with other genera of Pisidae.

## MATERIALS AND METHODS

Two ovigerous specimens of *Notolopas brasiliensis* were collected in March 1998 in Ubatuba, São Paulo, Brazil (23°26'18"S, 45°02'30"W) by trawling in depths of 10 m. The specimens were held in an aquarium until hatching, which occurred at night for both females. After hatching, 50 of the most active, positively phototactic larvae from each female were reared individually in 70 ml acrylic jars containing 30 ml of filtered seawater. The remaining larvae were kept in mass culture as extra specimens to be used for morphological description.

Newly hatched larvae were fed *ad libitum* with *Artemia* nauplii. Sea water was changed, and specimens were inspected and fed daily. All acrylic jars were washed in fresh water and air-dried before re-use with fresh seawater in the following day. Mean daily water temperature in the tank was 24° ± 1°C. Average salinity was 32. A 14L:10D photoperiod was maintained.

Whenever possible, a minimum of five specimens of each stage, from each females, were dissected for morphological description, and intra-specific observation. For slide preparations polyvinyl lactophenol mounting medium was used with Acid Fuchsin and/or chlorazol black stains.

The description of setae follows Pohle & Telford (1981), but here includes only analysis by light microscopy (LM), using an Olympus BH-2 microscope with Nomarski Differential Interference Contrast and drawing tube. Some of the setae designated as plumose herein may be plumodenticulate setae due to the lower resolution limits of LM as compared to scanning elec-

tron microscopy (SEM). Description guidelines of Clark *et al.* (1998) were generally followed.

Specimens of larval stages and a spent female crabs have been deposited at the NEBECC Decapod Larval Collection, Núcleo de Estudos em Biologia, Ecologia e Cultivo de Crustáceos, Department of Zoology – IB, Universidade Estadual Paulista, Botucatu, State of São Paulo, Brazil, accession numbers NEBECCLC # 00066 and 0078. Slides used in the description have been deposited at the Museu de Zoologia da Universidade de São Paulo, São Paulo, State of São Paulo, Brazil under register number MZUSP 17086.

## RESULTS

Larval development and description – Larval development of *Notolopas brasiliensis* consists of two zoeal stages and one megalopa. The duration mean of each zoeal stage was 4.2 ± 1.0 days for Zoea I and 3.8 ± 0.7 days for Zoea II, the megalopa instar appearing 8.1 ± 0.4 days after hatching. Only morphological changes are described for the second zoeal stage.

### Description

#### *Notolopas brasiliensis* Miers, 1886 First zoea (Figure 1)

*Carapace* (Figure 1A) – Dorsal spine curved, and short straight rostral spine not extending beyond antennule; lateral spines absent. On ventral margin with densely plumose “anterior seta” posterior to scaphognathite notch, followed by 5 additional sparsely plumose setae. Eyes sessile. Frontal area between dorsal and rostral spine forming a distinct swelling with strong muscle bands and bearing small protuberance with dorsal organ (*sensu* Martin & Laverack, 1992). Additional small knob with dorsal organ posterior to dorsal spine. One pair of simple or sparsely plumose setae present posterior to the dorsal spine.

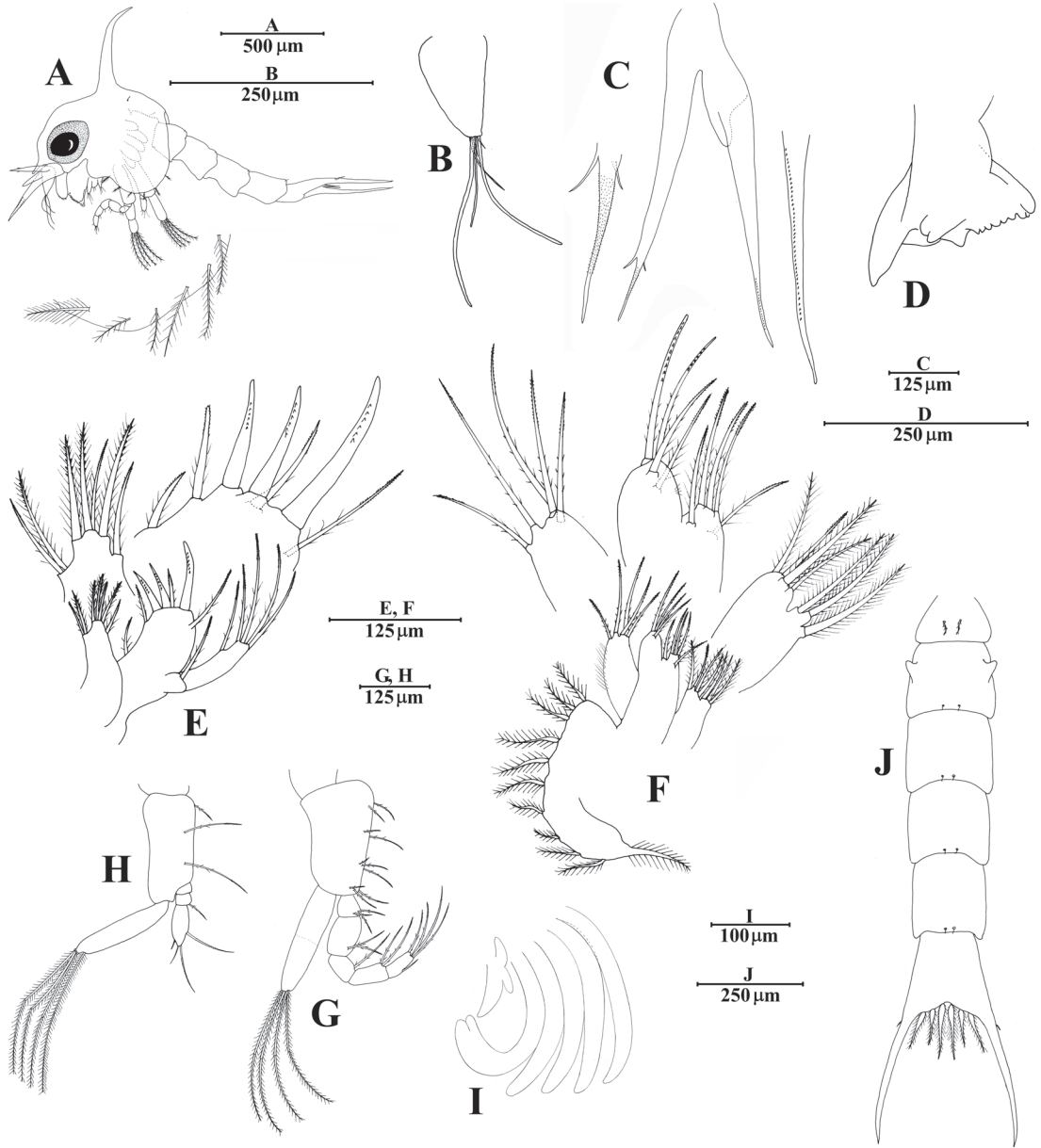
*Antennule* (Figure 1B) – Unsegmented, smooth, conical. Terminally bearing two long aesthetascs, 2 shorter aesthetascs, and 2 short setae.

*Antenna* (Figure 1C) – Biramous, protopod long and pointed, bearing 2 rows of spinules, increasing in size distally; endopod bud present; unsegmented exopod with long spinulated distal process and pair of serrulate setae about 1/3 from tip.

*Mandible* (Figure 1D) – Medial toothed molar process and enlarged lateral incisor process bearing marginal teeth. Palp absent.

*Maxillule* (Figure 1E) – Epipod seta absent. Coxal endite bearing 7 setae, 5 terminal graded plumodenticulate and subterminally 2 plumodenticulate setae. Basial endite

with 3 terminal plumodenticulate cuspidate setae and 4 subterminal plumodenticulate setae. Two-segmented endopod with proximal segment bearing plumodenticulate seta, distal segment bearing plumodenticulate seta medially and 2 pairs of plumodenticulate setae apically. Exopod seta absent. Microtrichia not observed.



**FIGURE 1.** First zoea of *Notolopas brasiliensis* Miers, 1886. **A**, lateral view; **B**, antennule; **C**, antenna; **D**, mandible; **E**, maxillule; **F**, maxilla; **G**, maxilliped 2; **H**, maxilliped 1; **I**, developing maxilliped 3 and pereopods; **J**, dorsal view of abdomen and telson.

*Maxilla* (Figure 1F) – Coxal endite bilobed, proximal lobe with 3 plumose setae, distal lobe with 4 setae, 3 plumose and 1 plumodenticulate; microtrichia not observed on the proximal and distal lobe. Basial endite bilobed, proximal lobe with 5 plumodenticulate setae, distal lobe bearing 4 plumodenticulate setae and microtrichia on proximal margin. Unsegmented, not bilobed endopod distally with 4 terminal and 1 subterminal plumodenticulate setae; microtrichia on lateral margin. Scaphognathite marginally with 11 densely plumose setae, including distal process.

*Maxilliped 1* (Figure 1G) – Coxa without setae. Basis with 10 plumodenticulate setae arranged 2,2,3,3. Endopod 5-segmented with 3,2,1,2,4+1 plumodenticulate setae. Incompletely bisegmented exopod with 4 terminal plumose natatory setae.

*Maxilliped 2* (Figure 1H) – Coxa without setae. Basis with 3 plumodenticulate setae. Endopod 3-segmented, with 0,1,4 (2 subterminal, 2 terminal) plumodenticulate setae. Incompletely bisegmented exopod with 4 terminal plumose natatory setae.

*Maxilliped 3* (Figure 1I) – Biramous, present as small endo-, exo- and epipod buds.

*Pereiopods* (Figure 1I) – Present as small buds, cheliped bilobed.

*Abdomen* (Figure 1J) – Five somites. Somite 1 with a pair of middorsal plumodenticulate setae, somites 2-5 each with pair of posterodorsal shorter sparsely plumose or simple setae. Somite 2 with pair of dorsolateral processes. Pleopods absent.

*Telson* (Figure 1J) – Bifurcated, distinct median notch, 3 pairs of serrulate setae on inner margin; each furcal shaft proximally bearing minute lateral spine, furcal shafts and spines covered with rows of spinules to just below tips.

## Second zoea (Figure 2)

*Carapace* (Figure 2A) – Eyes stalked. Three additional pairs of simple or sparsely plumose setae, two pairs just above eyes, another at base of dorsal spine. Lateral margin anteriorly to posteriorly now with 2 densely plumose and 6 plumose or plumodenticulate setae.

*Antennule* (Figure 2B) – With 3 long and 4 short aesthetascs and a short seta; endopod bud absent.

*Antenna* (Figure 2C) – Endopod bud enlarged to middle of protopod.

*Mandible* (Figure 2D) – With palp bud.

*Maxillule* (Figure 2E) – Coxa with extra subterminal plumodenticulate seta; basis with 2 additional cuspidate setae, and 1-2 additional subterminal plumodenticulate setae; exopod pappose seta present.

*Maxilla* (Figure 2F) – Coxal endite with proximal lobe bearing 3-4 plumose seta. Basial endite with 5 proximal and 5-6 distal plumodenticulate setae. Scaphognathite with 15-20 marginal plumose setae.

*Maxilliped 1* (Figure 2G) – Coxa with plumodenticulate seta. Exopod with 6 plumose natatory setae.

*Maxilliped 2* (Figure 2A) – Exopod with 6 plumose natatory setae.

*Maxilliped 3* (Figure 2H) – Endo-, exo- and epipod buds developing.

*Pereiopods* (Figure 2H) – Longer, chela distinct.

*Abdomen* (Figure 2I) – Separated sixth somite. Somite 1 with 3 middorsal plumodenticulate setae. Additional pair of middorsal simple setae on somite 2. Somites 2-5 with pair of unsegmented biramous pleopods, endopods distinct. Uropods absent.

## Megalopa (Figures 3 and 4)

*Carapace* (Figure 3A) – Longer than wide, narrowing anteriorly, with small rostrum deflected slightly ventrally; lateral and dorsolateral ridge extending from eyes to the beginning of branchial area, two additional pairs of dorsal protuberances near border of gastric area. Two small protuberances on the urogastric region, and a pair of tubercles on the metabranquial region. Surface with mostly simple setae as shown.

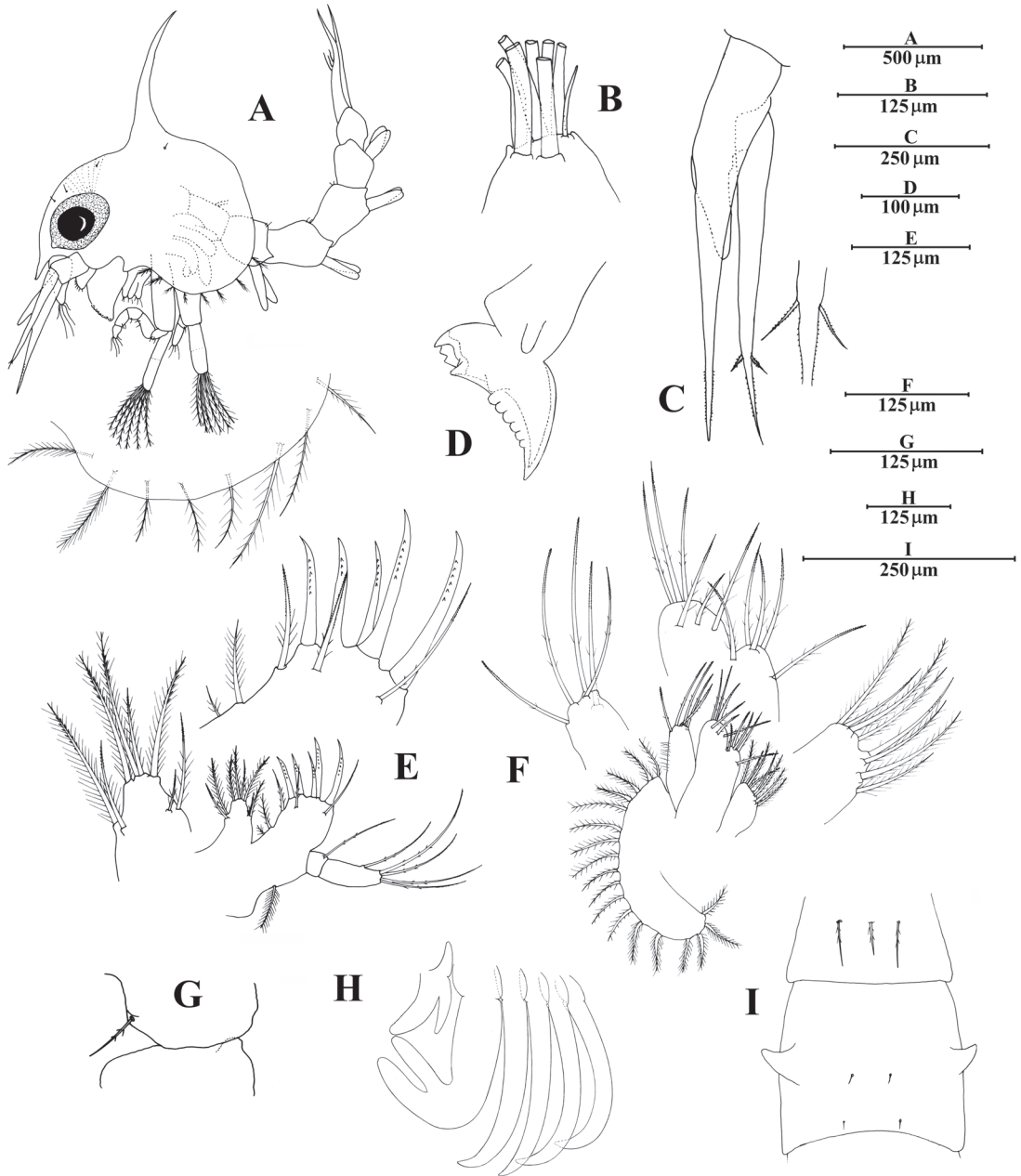
*Antennule* (Figure 3B) – Three-segmented peduncle with two simple setae on middle and single seta on distal segment; unsegmented endopod with one subterminal plumodenticulate and 2 terminal simple setae; three-segmented exopod with naked proximal segment,

single plumodenticulate seta and 7 aesthetascs on middle segment, and distal segment with 4 aesthetascs with aesthetasc-like apical seta.

*Antenna* (Figure 3C) – Segments 1-7, progressing proximally to distally, each with 0,2,2,0,0,4,4 simple setae,

respectively; 3 terminal setae longer. First segment with exopod process.

*Mandible* (Figure 3D) – Scoop-shaped process with cutting edge and unsegmented palp bearing 5 apical plumodenticulate setae.



**FIGURE 2.** Second zoea of *Notolopos brasiliensis* Miers, 1886. **A**, lateral view; **B**, detail of the antennule; **C**, antenna; **D**, mandible; **E**, maxillule; **F**, maxilla; **G**, detail of the coxal endite of the first maxilliped; **H**, developing maxilliped 3 and pereopods; **I**, dorsal view of abdominal somites 1-2.

*Maxillule* (Figure 3E) – Coxal endite with about 10 sub-terminal and terminal plumodenticulate setae. Basal endite with 18 mostly plumodenticulate setae distal to endopod. Unsegmented endopod naked.

*Maxilla* (Figure 3F) – Coxal endite proximal and distal lobes with 4 (3 plumose, 1 plumodenticulate) and 3 (2 plumose, 1 plumodenticulate) setae, respectively; basal endite proximal and distal lobes with 5+5 plumodenticulate setae, respectively. Endopod bearing 0-1 plumodenticulate seta terminally. Scaphognathite with 29 marginal plumose setae; blade with 3 simple setae.

*Maxilliped 1* (Figure 4A) – Epipod with 3 plumodenticulate setae. Coxal endite with about 4-6 plumodenticulate setae, basal endite bearing about 9-11 plumodenticulate setae; endopod absent; exopod with optional pappose or plumose seta distally on proximal segment and 4 plumose setae on distal segment.

*Maxilliped 2* (Figure 4B) – Coxa and basis not clearly differentiated; endopod with indistinct basal segment, subsequent four segments proximally to distally with 0, 1, 3 and 6 plumodenticulate setae respectively; exopod with naked proximal segment and 4 plumose setae on

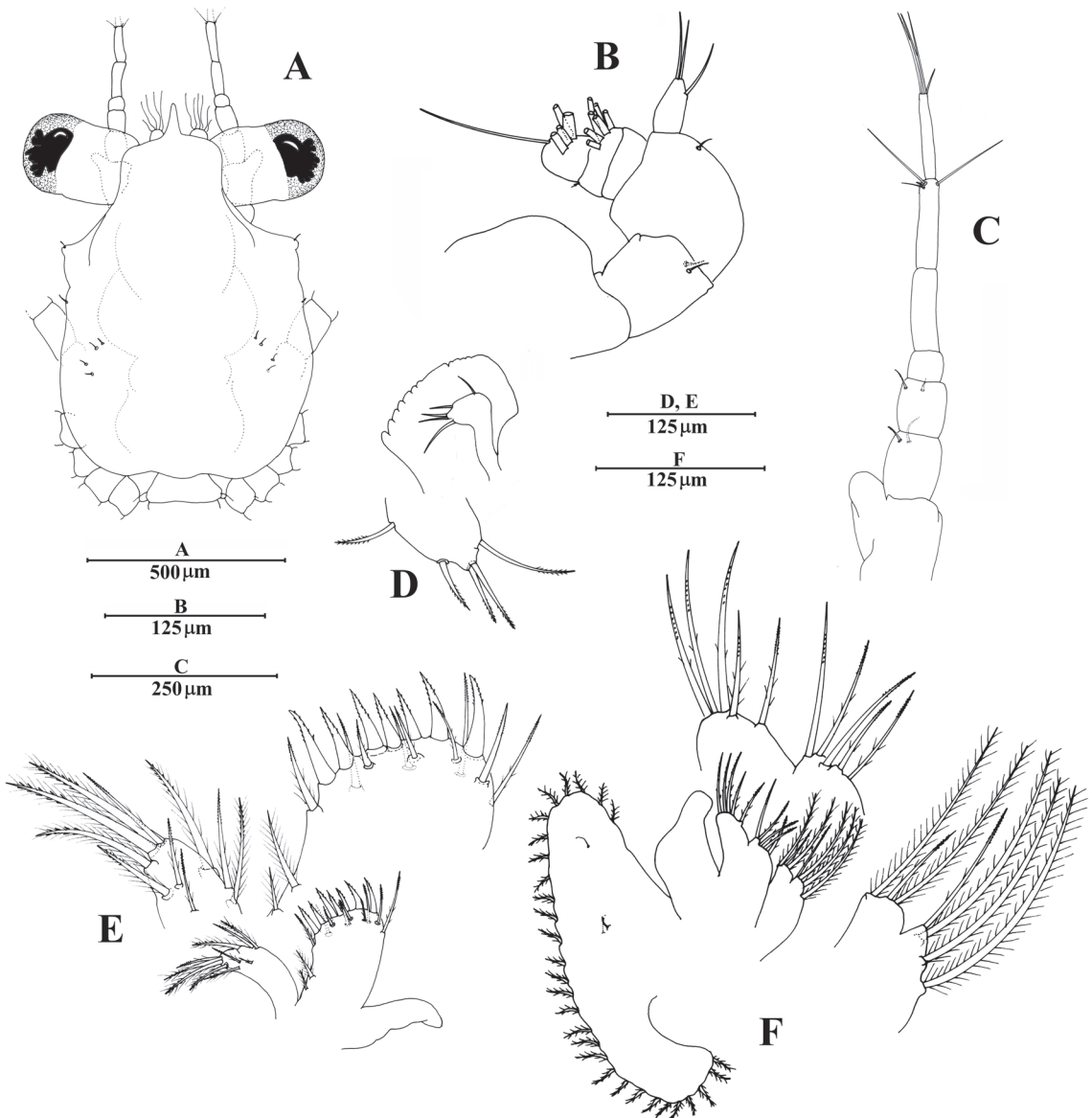


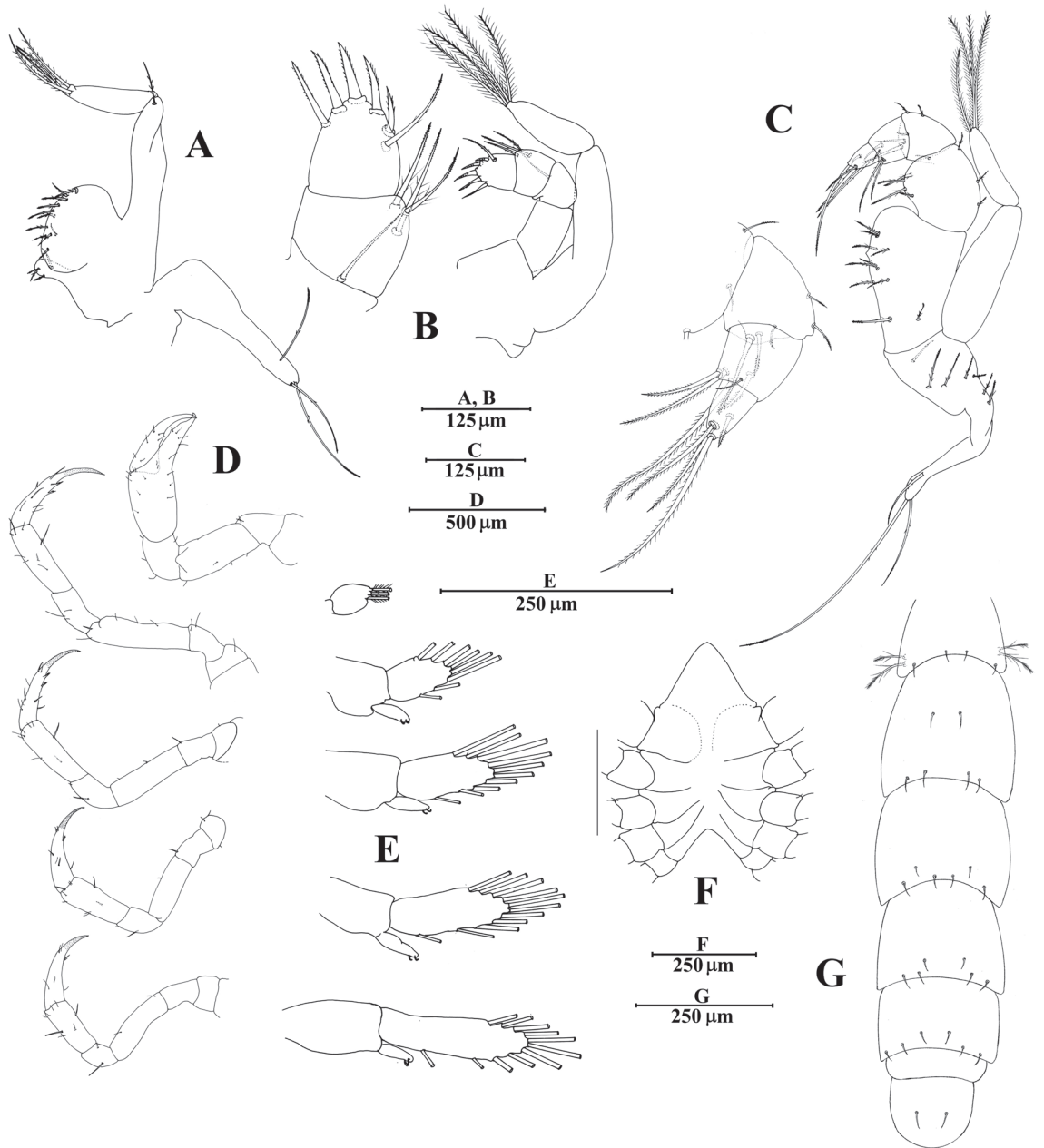
FIGURE 3. Megalopa of *Notolopas brasiliensis* Miers, 1886. A, dorsal view, B, antennule; C, antenna; D, mandible; E, maxillule; F, maxilla.

distal segment; epipodite not present on examined specimens.

bisegmented exopod with naked proximal segment and 4 setae apically on distal segment.

*Maxilliped 3* (Figure 4C) – Epipod with 3 plumodenticulate setae distally. Coxa with 5-7, basis not differentiated with 2 plumodenticulate setae; endopod proximally to distally with 8, 8, 5, 5 and 4 mostly plumodenticulate setae; ischium with crista dentata;

*Pereiopods* (Figure 4D) – Covered with mostly simple setae; coxa of pereiopods 1-4 with single ventral simple seta, coxa of pereiopod 1 with short projection fitting into sternal notch; coxa of pereiopods 2 and 3 with single spine, vestigial spine on coxa of pereiopod 4,



**FIGURE 4.** Megalopa of *Notolopas brasiliensis* Miers, 1886. **A**, maxilliped 1; **B**, maxilliped 2; **C**, maxilliped 3; **D**, cheliped and pereiopods; **E**, pleopods; **F**, sternum; **G**, dorsal view of abdomen and telson.

ischium of pereopod 2 with additional spine; dactyl of pereopods 1-4 with spinules as shown and 1-2 serrate setae on inner margin.

*Sternum* (Figure 4F) – Small lateral notch present on sternite 4.

*Abdomen* (Figure 4G, E) – Posterolateral margins of all somites rounded, dorsally and laterally ornamented with mostly simple setae, somites 1-5 proximally to distally with 4, 6, 6, 6, 6 setae, sixth somite naked. Somite 1 with two additional pairs of distinct plumose or plumodenticulate setae ventrolaterally. Exopod of pleopods 1-5 on somites 2-6 with 11, 11, 10, 8 and 3 plumose setae, respectively; endopod of pleopods 1-4 with 2 cincinnuli each, pleopod 5, i.e. uropod, lacking endopod.

*Telson* (Figure 4G) – Rounded posteriorly, bearing a pair of dorsal setae. Some specimens bear variously reduced setae on the posterior margin.

## DISCUSSION

This study reports for the first time larval stages from *Notolopas*. Previous accounts of the larval features within Pisidae have addressed the larval stages of 30 species within 15 genera (Table 1). However, some authors have argued that there are no larval characters that would define this family (e.g., Pohle & Marques, 2000; Marques & Pohle, 2003).

Ingle (1979) discussed character sets for families within Majoidea, and hence postulated some larval features that would characterize pisid larvae. His character set for this family included: absence of carapace lateral spines, rostral and dorsal spines of moderate length, one spine on the telson fork, dorsolateral processes on the 2<sup>nd</sup> abdominal somite, rarely on the 3<sup>rd</sup>; posterolateral processes on the 3<sup>rd</sup>-5<sup>th</sup> abdominal somite often short; basis of the 2<sup>nd</sup> maxilliped with not more than 3 setae; antennal exopod with subterminal setae. However, as we have accumulated larval descriptions over the years, these characters became inadequate to represent pisid species with known larval development.

A detailed exam of the characters used by Ingle (1979) to define larval forms of Pisidae shows that most of these characters are either symplesiomorphic or potentially highly homoplastic ones based on previous phylogenetic studies on larval morphology (Clark & Webber, 1991; Marques & Pohle, 1998, 2003; Pohle & Marques, 1998, 2000). For instance, the absence of lateral spines on the carapace is also observed in larval

forms within Mithracidae, Epialtidae, Inachidae, Inachoididae and some members of Majidae. The presence of dorsolateral process on the 2<sup>nd</sup> abdominal somite can be found in some species of Mithracidae, all Majidae, Epialtidae, Inachidae, Inachoididae. The presence of 3 setae on the basis of the 2<sup>nd</sup> maxilliped is shared with species within Majidae, Mithracidae, and most Epialtidae, Inachidae and Inachoididae. Finally, presence of subterminal setae on the exopod of the antenna can also be observed in members of Majidae, Mithracidae, Epialtidae and most Inachoididae (Marques & Pohle, 1998, 2003; Pohle & Marques, 1998, 2000; Santana *et al.*, 2004). Thus, we suggest, as previous works (e.g., Santana *et al.*, 2004), that these characters should not be used to define the larval forms within Pisidae. In addition, as have been asserted for many families within Majoidea (Pohle & Marques, 2000; Marques & Pohle, 2003), there is no unique larval characters and/or combinations of them that would distinguish larval stages of Pisidae from other members of Majoidea.

In contrast to other families of Majoidea in which larvae are difficult to differentiate because of the great consistency of larval morphology within it (e.g., Mithracidae) – especially in zoal stages (Santana *et al.*, 2003), larvae of Pisidae are difficult to identify because of the great heterogeneity of its larval forms (Santana *et al.* 2004) showing characters resembling other families. The corollary is the difficulty to find common sets of characters that would define the group as mentioned above. Be that as it may, Santana *et al.* (2004) compared larval morphology within Pisidae and pointed out some characters that could suggest Pisidae as a phenetically coherent group, with the exception of few genera. However, as stated by Santana *et al.* (2004), those characters could be overall similarities, i.e., similesiomorphies and/or homoplasies within Majoidea. The larval morphology of *Notolopas brasiliensis* is in agreement with the zoal characters proposed by Santana *et al.* (2004) that characterize Pisidae. In the first zoal stage, the setation of the coxal and basal endites of the maxillule (excluding *Pisoides*), and the endopod of the first maxilliped (excluding *Doclea*) could be mentioned (Table 2). The character that could distinguish the second zoal stage is: the presence of the exopod seta on the maxillule (excluding *Pisoides*) (Table 3). The megalopa presents no consistent morphological character among genera (Table 4).

Among Pisidae, *Notolopas* has no single zoal character that could distinguish the genus from other members of the family (Tables 2, 3, 4). However, a combination of characters can differentiate *Notolopas* from other pisids. For instance, the arrangement of the setation on



**TABLE 1:** Species of the Pisidae with known larval descriptions, indicating source and stages described. \* not included in comparison.

| Species                        | Authors                          | Stages described |
|--------------------------------|----------------------------------|------------------|
| <i>Anamathia rissoana</i>      | Guerao & Abelló, 1996;           | PZ, Z1;          |
| <i>Apiomithrax violaceus</i>   | Santana <i>et al.</i> , 2004;    | Z1, Z2, M;       |
| <i>Doclea gracilipes</i>       | Chhappgar, 1956;                 | M, C1;           |
|                                | Krishnan & Kannupandi, 1988;     | Z1, Z2, M;       |
| <i>D. hybrida</i>              | Sankolli & Shenoy, 1975;         | Z1, Z2, M;       |
| <i>D. ovis</i>                 | Mohan & Kannupandi, 1985;        | Z1, Z2, M;       |
| <i>D. muricata</i>             | Krishnan & Kannupandi, 1987;     | Z1, Z2, M;       |
| <i>Eurynolambrus australis</i> | Webber & Wear, 1981;             | Z1, Z2, M;       |
| <i>Eurynome aspera</i>         | Kinahan, 1858;                   | PZ;              |
|                                | Kinahan, 1860;                   | Z1;              |
|                                | Gurney, 1924;                    | PZ, Z1;          |
|                                | Lebour, 1928;                    | Z1, Z2, M;       |
|                                | Bourdillon-Casanova, 1960;       | M;               |
|                                | Salman, 1982;                    | Z1, Z2, M;       |
|                                | Wear & Fielder, 1985;            | Z2, M;           |
| <i>E. spinosa</i>              | Salman, 1982;                    | Z1;              |
|                                | Hong, 1998;                      | Z1, Z2, M;       |
| <i>Herbstia condyliata*</i>    | Cano, 1893;                      | Z2, M;           |
|                                | Bourdillon-Casanova, 1960;       | Z1;              |
| <i>Hyastenus diacanthus*</i>   | Kurata, 1969;                    | Z1, M;           |
| <i>H. elongatus*</i>           | Terada, 1983;                    | Z1, Z2;          |
|                                | Ko, 1997;                        | Z1;              |
| <i>Libidoclaea granaria</i>    | Fagetti, 1969;                   | Z1, Z2, M;       |
| <i>Libinia dubia</i>           | Sandifer & van Engel, 1971;      | Z1, Z2, M;       |
| <i>L. emarginata</i>           | Johns & Lang, 1977;              | Z1, Z2, M;       |
| <i>L. erinacea*</i>            | Yang, 1967;                      | Z1, Z2, M;       |
| <i>L. ferreirae</i>            | de Bakker <i>et al.</i> , 1990;  | Z1, Z2, M;       |
| <i>L. setosa*</i>              | Rathbun, 1923;                   | M;               |
| <i>L. spinosa</i>              | Boschi & Scelzo, 1968;           | Z1, Z2, M;       |
|                                | Clark <i>et al.</i> , 1998a;     | Z1, Z2, M, C1;   |
| <i>Lissa chiragra*</i>         | Cano, 1893 ( <i>Lissa</i> sp.);  | Z1, Z2, M;       |
|                                | Boraschi, 1921;                  | Z1;              |
|                                | Bourdillon-Casanova, 1960;       | Z1;              |
|                                | Heegaard, 1963;                  | Z1;              |
|                                | Guerao <i>et al.</i> , 2003;     | Z1, Z2, M, C1    |
| <i>Naxioides histrix*</i>      | Kurata, 1969;                    | Z1;              |
| <i>N. serpulifera*</i>         | Rathbun, 1914 (direct develop.); | C1, C2;          |
| <i>Pisa armata</i>             | Heegaard, 1963;                  | Z1;              |
|                                | Ingle & Clark, 1980;             | Z1, Z2, M, C1;   |
| <i>P. corallina*</i>           | Gouret, 1884;                    | Z1;              |
| <i>P. nodipes*</i>             | Heegaard, 1963;                  | Z1;              |
| <i>P. tetradon</i>             | Heegaard, 1963;                  | Z1;              |
|                                | Rodriguez, 1997;                 | Z1, Z2, M, C1;   |
| <i>Pisoides edwardsi</i>       | Fagetti, 1969a;                  | Z1, Z2, M;       |
| <i>P. ortmanni*</i>            | Kurata, 1969;                    | Z1, M;           |
|                                | Terada, 1983;                    | Z1, Z2;          |
| <i>Rochinia carpenteri</i>     | Ingle, 1979;                     | Z1, Z2, M;       |
| <i>Scyra compressipes</i>      | Kim & Hong, 1999;                | Z1, Z2, M;       |

Modified from Santana *et al.* (2004)

the endopod of the maxillule with one seta on the proximal segment and 5 setae on the distal segment (similar to *Apiomithrax*, *Libidoclea*, and *Libinia*) in addition to the setation of the coxal endite of the maxilla (similar in *Doclea*, and *Eurynolambrus*) can be used to differentiate the first zoeal stage of *Notolopas* from the

other pisids (Table 2). For the second zoeal stage, the number of aesthetascs and seta on the antennule (resembling *Doclea*, and *Eurynome*), the setation on the endopod of the maxillule (congruent with the pattern found in *Apiomithrax*, *Libidoclea*, and *Libinia*), and the setation on the endopod of the second maxilliped (simi-

**TABLE 2.** Comparison of larval characters of the first zoeal stage for Pisidae genera.

| Zoea 1    | <i>Notolopas</i>  | <i>Apiomithrax</i>   | <i>Doclea</i>   | <i>Eurytolambrus</i>   | <i>Eurynome</i>                                       | <i>Libidoelaea</i>  |
|-----------|---|--|---|--|---|---|
| carapace  | RS: short;<br>LS absent;<br>6 s ventral margin          | RS: long;<br>(RS > DS);<br>LS present;<br>5-6 s ventral margin | RS: short or absent;<br>LS absent;<br>5-8 s ventral margin  | RS: intermediate;<br>LS absent;<br>7 s ventral margin        | RS: intermediate;<br>LS absent;<br>4 s ventral margin | RS: long;<br>(RS < DS);<br>LS absent;<br>6 s ventral margin |
| antennule | 4 aes, 2 s  | 4 aes, 2 s   | 4 aes, 0-2 s  | 4 aes, 2 s   | 4 aes, 1-2 s  | 3 aes, 2 s  |
| antenna   | exo < pro   | exo > pro  | exo < pro   | exo < pro  | exo < pro;  | exo = pro   |
| maxillule | cox: 7;<br>bas: 7;<br>end: 1, 5                         | cox: 7;<br>bas: 7;<br>end: 1, 5                                | cox: 7;<br>bas: 7;<br>end: 0-1, 6-7                         | cox: 7;<br>bas: 7;<br>end: 1, 6                              | cox: 7;<br>bas: 7;<br>end: 1, 6                       | cox: 7;<br>bas: 7*;<br>end: 1, 5                            |
| maxilla   | cox: 3, 4;<br>bas: 5, 4;<br>end: 5;<br>sca: 11          | cox: 4, 4;<br>bas: 5, 4;<br>end: 3-4;<br>sca: 10               | cox: 3-5, 3-5;<br>bas: 2-5, 3-4;<br>end: 4-5;<br>sca: 11-16 | cox: 3, 4;<br>bas: 5, 4;<br>end: 5;<br>sca: 13               | cox: 5, 4;<br>bas: 4-5, 4;<br>end: 3, 3;<br>sca: 9-10 | cox: 4, 5;<br>bas: 4, 5;<br>end: 3, 3;<br>sca: 15           |
| mxpd 1    | cox: 0;<br>bas: 2, 2, 3, 3;<br>end: 3, 2, 1, 2, 5       | cox: 1;<br>bas: 2, 2, 2, 3;<br>end: 3, 2, 1, 2, 5              | cox: 0*;<br>bas: 2, 1-2, 2, 3;<br>end: 3-4, 2, 1-2, 2-3, 5  | cox: 1;<br>bas: 2, 2, 2, 3;<br>end: 3, 2, 1, 2, 5            | coxa 0-1;<br>bas: 2, 2, 3, 3;<br>end: 3, 2, 1, 2, 5   | cox: 0*;<br>bas: 2, 2, 3, 3;<br>end: 3, 2, 1, 2, 5          |
| mxpd 2    | bas: 3;<br>end: 0, 1, 4                                 | bas: 3;<br>end: 0, 1, 4  | bas: 2-4;<br>end: 0, 1, 3-4                                 | bas: 3;<br>end: 0, 1, 6                                      | bas: 3;<br>end: 1, 1-2, 5                             | bas: 3;<br>end: 0, 1, 5                                     |
| abdomen   | S1: 2;<br>S2-5: 2;<br>dlp: S2                           | S1: 2;<br>S2-5: 2;<br>dlp: S2-3                                | S1: 2-3;<br>S2-5: 0 or 2;<br>dlp: S2                        | S1: 2;<br>S2-5: 2;<br>dlp: S2                                | S1: 2;<br>S2-5: 2;<br>dlp: S2                         | dlp: S2   |
| telson    | furca: 1 sp;<br>spi present;<br>6 s                     | furca: 2 sp;<br>spi present;<br>6 s                            | furca: 0 sp;<br>spi absent;<br>6 s                          | furca: 3 sp;<br>spi present;<br>6 s                          | furca: 2-4 sp;<br>spi present;<br>6 s                 | furca: 1 sp;<br>spi present;<br>6 s                         |
| Zoea 1    | <i>Libinia</i>  | <i>Pisa</i>  | <i>Pisoides</i>   | <i>Roebinia</i>  | <i>Scyra</i>  |   |
| carapace  | RS: short;<br>LS absent;<br>6-8 s ventral margin        | RS: short;<br>LS absent;<br>6-7 s ventral margin               | RS: short;<br>LS absent;<br>6-7 s ventral margin            | RS: long<br>(RS < DS);<br>LS present;<br>4* s ventral margin | RS: intermediate;<br>LS absent;<br>6 s ventral margin |   |
| antennule | 2-4 aes, 1-2 s  | 4-6 aes, 0 or 2 s  | 4 aes, 2 s  | 2 aes, 1 s   | 5 aes, 1* s   |   |
| antenna   | exo < pro*  | exo = pro  | exo > pro   | exo > pro  | exo < pro   |   |
| maxillule | cox: 7;<br>bas: 7;<br>end: 1, 5                         | cox: 7;<br>bas: 7;<br>end: 1, 6                                | cox: 8;<br>bas: 7;<br>end: 1, 6                             | cox: 7;<br>bas: 7;<br>end: 1, 6                              | cox: 7;<br>basis 7;<br>end: 1, 4                      |   |
| maxilla   | cox: 4, 4;<br>bas: 4, 4-5;<br>end: 4-5;<br>sca: 10-11   | cox: 5-6, 4;<br>bas: 4-5, 4;<br>end: 5;<br>sca: 11-13          | cox: 5, 4;<br>bas: 4, 4;<br>end: 5;<br>sca: 13              | cox: 5, 4;<br>bas: 5, 4;<br>end: 6;<br>sca: 12               | cox: 4, 4;<br>bas: 5, 4;<br>end: 4;<br>sca: 9-10      |   |
| mxpd 1    | cox: 0-1;<br>bas: 2, 2*, 3, 3, 3;<br>end: 3, 2, 1, 2, 5 | cox: 0*;<br>bas: 2, 2, 3, 3, 3;<br>end: 3, 2, 1, 2, 5          | cox: 0*;<br>bas: 2, 2, 3, 3, 3;<br>end: 3, 2, 1, 2, 5       | cox: 0*;<br>bas: 2, 2, 3, 3, 3;<br>end: 3, 2, 1, 2, 5        | cox: 0*;<br>bas: 2, 2, 2, 3, 3;<br>end: 3, 2, 1, 2, 5 |   |
| mxpd 2    | bas: 3;<br>end: 0, 1, 4-5                               | bas: 3;<br>end: 0-1, 1-2, 5 or 3                               | bas: 3;<br>end: 1, 1, 4                                     | bas: 3;<br>end: 0, 1, 5                                      | bas: 3;<br>end: 0, 1, 4                               |   |
| abdomen   | S1: 2;<br>S2-5: 2;<br>dlp: S2                           | S1: 2;<br>S2-5: 2;<br>dlp: S2                                  | S1: 2;<br>S2-5: 2;<br>dlp: S2                               | S1: 2;<br>S2-5: 2;<br>dlp: S2                                | S1: 2;<br>S2-5: 2;<br>dlp: S2                         |   |
| telson    | furca: 1 sp;<br>spi present;<br>6 s                     | furca: 1 sp;<br>spi present;<br>6 s                            | furca: 1 sp;<br>spi present;<br>6 s                         | furca: 1 sp;<br>spi present;<br>6 s                          | furca: 1 sp;<br>spi present;<br>6 s                   |   |

RS: rostral spine; DS: dorsal spine; LS: lateral spine; dlp: dorsolateral process; cox: coxa or coxal endite; bas: basis or basal endite; end: endopod; exo: exopod; sca: scaphognathite; epi: epipod; pro: protopod; ped: peduncle; S: somite; s: setae; aes: aesthetasc; spi: spine; spi: spinules, \* observation from figure, n/a: not available.

lar to *Apiomithrax*, *Libinia*, and *Pisa*) can separate *Notolopas* from other pisids (Table 3). Conversely, the megalopa possesses some unique larval characters, which could be useful to diagnose the species within pisids. For instance, the number of aesthetascs of the exopod of the

antennule, the setation of the coxal endite and scaphognathite of the maxilla, the number of setae on the endopod of the third maxilliped, and the abdominal setation are only found in megalopa of *Notolopas* (Table 4).

**TABLE 3.** Comparisons of larval characters of second zoeal stage for Pisidae genera; see table 2 for definition of abbreviations.

| Zoea 2    | <i>Notolopas</i>   | <i>Apimilbrax</i>  | <i>Docea</i>  | <i>Euryrolambrus</i>                                  | <i>Eurynome</i>   | <i>Libidoclaea</i>  |
|-----------|--|--|---|---|---|---|
| carapace  | RS: short;<br>LS absent;<br>8 s ventral margin           | RS: long;<br>(RS > DS);<br>LS present;<br>7-8 s ventral margin | RS: short or absent;<br>LS absent;<br>6-10 s ventral margin   | RS: intermediate;<br>LS absent;<br>8 s ventral margin | RS: intermediate;<br>LS absent;<br>4-6 s ventral margin | RS: long;<br>(RS < DS);<br>LS absent;<br>7 s ventral margin |
| antennule | 7 aes, 1 s   | 8 aes, 2 s   | 5-8 aes, 0-2 s  | 8 aes   | 5-7 aes, 1 s  | 7 aes   |
| antenna   | exo < pro  | exo > pro  | exo < pro   | exo < pro   | exo < pro   | exo < pro*  |
| maxillule | cox: 8;<br>bas: 9-10;<br>end: 1, 5;<br>exo: 1            | cox: 8;<br>bas: 10;<br>end: 1, 5;<br>exo: 1                    | cox: 6-8;<br>bas: 8-10;<br>end: 0-1, 6-7;<br>exo: 0-1         | cox: 7;<br>bas: 9;<br>end: 1, 6;<br>exo: 1            | cox: 7;<br>bas: 9*;<br>end: 1, 6;<br>exo: 1             | cox: 7;<br>bas: 10*;<br>end: 1, 5;<br>exo: 1                |
| maxilla   | cox: 3-4, 4;<br>bas: 5, 5-6;<br>end: 5;<br>sca: 15-20    | cox: 4, 4;<br>bas: 4-5, 5;<br>end: 3-4;<br>sca: 20             | cox: 4-6, 3-5;<br>bas: 4-5, 3-4;<br>end: 4-5;<br>sca: 25-30   | cox: 3, 4;<br>bas: 5, 5;<br>end: 5;<br>sca: 23-25     | cox: 5, 4;<br>bas: 5, 5;<br>end: 5;<br>sca: 16-19       | cox: 4, 5;<br>bas: 5, 5*;<br>end: 5;<br>sca: 29             |
| mxdp 1    | cox: 1;<br>bas: 2, 2, 3, 3;<br>end: 3, 2, 1, 2, 5        | cox: 1;<br>bas: 2, 2, 2, 3;<br>end: 3, 2, 1, 2, 5              | cox: 0-1;<br>bas: 1-2, 2, 2-3, 3;<br>end: 2-4, 2, 1-2, 2-3, 5 | cox: 1,<br>bas: 2, 2, 2, 3;<br>end: 3, 2, 1, 2, 5     | cox: 0-1;<br>bas: 2, 2, 3, 3;<br>end: 3, 2, 1, 2, 5     | cox: 0*;<br>bas: 2, 2, 3, 3;<br>end: 3, 2, 1, 2, 5          |
| mxdp 2    | bas: 3;<br>end: 0, 1, 4                                  | bas: 3;<br>end: 0, 1, 4  | bas: 2-6;<br>end: 0, 1, 3-5                                   | bas: 3;<br>end: 0, 1, 6                               | bas: 3;<br>end: 1, 1-2, 5                               | bas: 3;<br>end: 0, 1, 5                                     |
| abdomen   | S1: 3;<br>S2: 4;<br>S3-5: 2;<br>dlp: S2                  | S1: 5;<br>S2-3: 4;<br>S4-5: 2;<br>dlp: S2-S3                   | S1: 3;<br>S2-5: 0 or 2 (5 or 6 S);<br>dlp: S2                 | S1: 2;<br>S2-5: 2;<br>dlp: S2                         | S1: 3;<br>S2-5: 2;<br>dlp: S2                           | S1: 2;<br>dlp: S2   |
| telson    | furca: 1 sp;<br>spi present;<br>6 s                      | furca: 2 sp;<br>spi present;<br>8 s                            | furca: 0 sp;<br>spi absent;<br>6 s                            | furca: 3 sp;<br>spi present;<br>8 s                   | furca: 2-4 sp*;<br>spinules present;<br>8 s             | furca: 1 sp;<br>spinules present;<br>6 s                    |
| Zoea 2    | <i>Libinia</i>   | <i>Pisa</i>  | <i>Pisoides</i>   | <i>Rochinia</i>                                       | <i>Sygra</i>  |   |
| carapace  | RS: short;<br>LS absent;<br>7-10 s ventral margin        | RS: short;<br>LS absent;<br>7 s ventral margin                 | RS: short;<br>LS absent;<br>11 s ventral margin               | RS: long;<br>(RS < DS);<br>LS present                 | RS: intermediate;<br>LS absent;<br>6 s ventral margin   |   |
| antennule | 6 or 8 aes, 1-2 s  | 6 or 8 aes, 0 or 2 s   | 6 aes   | 5 aes, 1 s  | 8 aes, 2 s  |   |
| antenna   | exo < pro*   | exo = pro  | exo > pro   | exo > pro   | exo = pro   |   |
| maxillule | cox: 7-8;<br>bas: 9-10;<br>end: 1, 5;<br>exo: 1          | cox: 7-8;<br>bas: 8-9;<br>end: 1, 6;<br>exo: 1                 | cox: 7F 8T;<br>bas: 9;<br>end: 1, 6;<br>exo: 0*               | cox: 6-7;<br>bas: 10;<br>end: 1, 6;<br>exo: 1         | cox: 7;<br>bas: 10;<br>end: 1, 4;<br>exo: 1             |   |
| maxilla   | cox: 4, 3-4;<br>bas: 5, 4-5;<br>end: 5;<br>sca: 16 or 20 | cox: 5, 4;<br>bas: 5, 4-5;<br>end: 5;<br>sca: 20-23            | cox: 4T 5F, 4*;<br>bas: 5, 4;<br>end: 5;<br>sca: 21           | cox: 5, 4;<br>bas: 5, 8;<br>end: 7;<br>sca: 21-23     | cox: 4, 4;<br>bas: 5, 5;<br>end: 4;<br>sca: 16          |   |
| mxdp 1    | cox: 0-1;<br>bas: 2, 2, 3, 3;<br>end: 3, 2, 1, 2, 5      | cox: 0;<br>bas: 2, 2, 3, 3;<br>end: 3, 2, 1, 2, 5              | cox: 0*;<br>bas: 2, 2, 3, 3;<br>end: 3, 2, 1, 2, 5            | cox: 0*;<br>bas: 2, 2, 3, 3;<br>end: 3, 2, 1, 2, 5    | cox: 0*;<br>bas: 2, 2, 2, 3;<br>end: 3, 2, 1, 2, 5      |   |
| mxdp 2    | bas: 3;<br>end: 0, 1, 4-5                                | bas: 3;<br>end: 0-1, 1-2, 3or5                                 | bas: 3;<br>end: 1, 1, 4                                       | bas: 3;<br>end: 0, 1, 5                               | bas: 3;<br>end: 0, 1, 4                                 |   |
| abdomen   | S1: 3;<br>S2-3: 4;<br>S4-5: 2*;<br>dlp: S2               | S1: 2;<br>S2: 4;<br>S3-5: 2;<br>dlp: S2                        | S1: 4;<br>S2: 4;<br>S3-5: 2;<br>dlp: S2                       | S1-2: 2;<br>S3-4: 4;<br>S5: 2or4;<br>dlp: S2          | S1: 2*;<br>S2-3: 4;<br>S3-5: 2;<br>dlp: S2              |   |
| telson    | furca: 1 sp;<br>spinules present;<br>6 s                 | furca: 1 sp;<br>spi present;<br>6 s                            | furca: 1 sp;<br>spi present;<br>6 s                           | furca: 1 sp;<br>spi present;<br>6 s                   | furca: 1 sp;<br>spi present;<br>6 s                     |   |

Phylogenetic studies considering larval characters within majoids have failed to demonstrate the monophyly of most of the families including Pisidae (Clark & Webber, 1991; Marques & Pohle, 1998, 2003; Pohle & Marques, 2000). Hence, the most recent phylogenetic analysis using

larval characters for Majoidea (Marques & Pohle, 2003) was unable to resolve the sister-group relationships within Pisidae. Thus, we are still waiting for larval characters that upon phylogenetic analysis would provide a set of synapomorphies that could be used to diagnose the family.

**TABLE 4.** Comparisons of larval characters of the megalopa stage for Pisidae genera; see table 2 for definition of abbreviations.

| Megalopa  | <i>Notolopas</i>  | <i>Apimithrax</i>   | <i>Doclea</i>   | <i>Eurytolambrus</i>  | <i>Eurynome</i>   | <i>Libidoclaea</i>  |
|-----------|---|---|---|---|---|---|
| carapace  | RS: short;<br>DS: absent;   | RS: long;<br>DS: present;   | RS: short or 2 horned;<br>DS: absent;   | RS: absent;<br>DS: absent;  | RS: short;<br>DS: absent;   | RS: short;<br>DS: absent;   |
| antennule | 7-8 s posterior margin<br>ped: 0,2,1;<br>end: 3;<br>exo: 7+1s,5 ae;   | 7-8 s posterior margin<br>ped: 1,2,1;<br>end: 3;<br>exo: 10+1s,5 ae;  | 0* s posterior margin<br>ped: 0 or 4,0,1-2;<br>end: 2-3;<br>exo: 0 or 5,3-4,2-3,0-1ae+1 s;  | 5* s posterior margin<br>ped: 0,1,1;<br>end: 3;<br>exo: 10+1,4,1ae;                                       | 0 s posterior margin<br>ped: 0-1,2,0or2;<br>end: 3-4;<br>exo: 4or6,3 ae;  | 0 s posterior margin<br>ped: 0,1,1*;<br>end: 3;<br>exo: 8+1*,4+1* ae;                     |
| antenna   | seg 1-7:<br>0,2,2,0,0,4,4;  | seg 1-7:<br>1,2,3,0,0,4,3;  | seg 1-7:<br>0,0or2,1or3,0,0-1,2-3,1or4;   | seg 1-7:<br>0,1,1,3,0,4,3*;   | seg 1-7:<br>2,1-2,2-3,0-1,0,3,3-4;  | seg 1-7:<br>0,2,3,0,0,4,4;  |
| mandible  | palp 5 s  | palp 5-6 s  | palp 4-5 s  | palp 4 s  | palp 6 s  | palp 5 s  |
| maxillule | cox: 10;<br>bas: 18;<br>end: 0;<br>epi: 0;  | cox: 10-11+1;<br>bas: 19;<br>end: 2;<br>epi: 1;   | cox: 7or 9-10;<br>bas: 12 or 17;<br>end: 2-3 or 5;<br>epi: 0;   | cox: 8;<br>bas: 11;<br>end: 2;<br>epi: 1;   | cox: 9-10;<br>bas: 15-16;<br>end: 1-2;<br>epi: 0*;  | cox: 11*;<br>bas: 18;<br>end: 1;<br>epi: 0*;  |
| maxilla   | cox: 4, 3;<br>bas: 5, 5;<br>end: 0-1;<br>sca: 20, 3;<br>cox: 4-6;<br>bas: 9-11;<br>end: 0;<br>exo: 0-1, 4;<br>epi: 3; | cox: 5, 3;<br>bas: 5-6, 6-7;<br>end: 0;<br>sca: 37-40, 3;<br>cox: 6-8;<br>bas: 12-14;<br>end: 0-1;<br>exo: 1, 4;<br>epi: 7; | cox: 5-7, 2or4or6-7;<br>bas: 3or5or7, 4-5or7;<br>end: 0;<br>sca: 36-45, 0or6?;<br>cox: 4-5 or 8;<br>bas: 7 or 12-13;<br>end: 1-2 or 4;<br>exo: 0-2, 4;<br>epi: 4-6; | cox: 5, 5;<br>bas: 6, 6;<br>end: 0;<br>sca: 36-37, 4;<br>cox bas: 16;<br>end: 0;<br>exo: 1, 4;<br>epi: 6; | cox: 6, 3;<br>bas: 3-5, 5;<br>end: 0;<br>sca: 30-34, 0or3*;<br>cox: 5-7;<br>bas: 9-11;<br>exo: 0*-1, 4;<br>epi: 0*or 2-4; | cox: 7, 3;<br>bas: 6, 6;<br>end: 0;<br>sca: 51, 0*;<br>cox: 7*;<br>bas: 12*;<br>epi: 14*; |
| mxpd 1    | end: 0,1,3,6;<br>exo: 0, 4;<br>cox: 7-9;<br>end: 10,8,5,5,4;  | end: 0,1,2-3,5-6;<br>exo: 0, 4;<br>cox: 6-7;<br>end: 13,9-11,4-5,7,4;   | end: 0,0or2,0or 3-4,4-5or7;<br>exo: 0, 5-6;<br>cox: 3-4*;<br>end: 0or9or12,5-6or 8-9,2or4-5,2-3or5-6,3-5;   | end: 0,1,3,5;<br>exo: 0, 4;<br>cox: 9;<br>end: 13,6,4,7,5;  | end: 0,1,3,5-6;<br>exo: 0, 4;<br>cox: 5-6 or 11;<br>end: 12-14,5,1-2,4-5,5;   | end: 0,1,4,6*;<br>exo: 0, 4*;<br>cox: 8*;<br>end: 12,9,5,5,4*;                            |
| mxpd 2    | exo: 0, 4;<br>epi: 3;   | exo: 0, 4;<br>epi: 7;   | exo: 0, 4;<br>epi: 4or8?;   | exo: 2, 4;<br>epi: 13*;   | exo: 1, 4-5;<br>epi: 5*6-;  | exo: 0, 5*;<br>epi: 11*;  |
| abdomen   | S1-6: 6,6,6,6,0;  | S1-6: 6,6,8,8,8,2;  | n/a   | S1-6: 6,10,8,8,8,2;   | S1-6: 6*0,4or6,4or 6,4or6,4or6,0;   | S1-6: 4,2,2,2,0,0*;   |

| Megalopa  | <i>Libinia</i>   | <i>Pisa</i>   | <i>Pisoides</i>  | <i>Rochinia</i>  | <i>Scyra</i>  |
|-----------|--|---|--|--|---|
| carapace  | RS: short or long ( <i>L. spinosa</i> );<br>DS: present ( <i>L. spinosa</i> );<br>6-7* or 15* s posterior margin | RS: short;<br>DS: absent;   | RS: intermediate;<br>DS: absent;                                   | RS: long;<br>DS: present;  | RS: short;<br>DS: absent;   |
| antennule | ped: 0,1-2,1-2;<br>end: 3;<br>exo: 5-6or10+0-1,3-4or6+1* ae;   | 0* s posterior margin<br>ped: 0,1,1;<br>end: 3;<br>exo: 6or8+1,4+0-1ae; | 5 s posterior margin<br>ped: 0,2,1;<br>end: 3;<br>exo: 10+1,4+1ae; | 0* s posterior margin<br>ped: 0,2,0;<br>end: 3;<br>exo: 6+1,4,3,1+1ae; | 0* s posterior margin<br>ped: 1,1,1;<br>end: 2;<br>exo: 6,5+1 ae; |
| antenna   | seg 1-7:<br>0-1,1-2,1-3,0,0,3,4-3,4*;  | seg 1-7:<br>0,2,3,0,0,4,4;  | seg 1-7:<br>0,2,3,0,0,3,4*;  | seg 1-7:<br>0,2,2,0,0,3,3;   | seg 1-7:<br>0,2,3,0,0,3,4;  |
| mandible  | palp 5 s   | palp 5 s  | palp 4 s   | palp 5 s   | palp 5 s  |
| maxillule | cox: 10-11;<br>bas: 16-18;<br>end: 0-4*;<br>epi: 0;  | cox: 9-10;<br>bas: 17;<br>end: 2-3;<br>epi: 0*;                         | cox: 10;<br>bas: 17;<br>end: 0,2;<br>epi: 0*;                      | cox: 10;<br>bas: 11-12*;<br>end: 4;<br>epi: 0*;                        | cox: 10;<br>bas: 15;<br>end: 2;<br>epi: 0;                        |
| maxilla   | cox: 5-6, 3;<br>bas: 6-7, 5-7;<br>end: 0-2;<br>sca: 31-36, 2;  | cox: 7, 3;<br>bas: 4-5, 6;<br>end: 0;<br>sca: 30-32, 0*or3;             | cox: 5, 2;<br>bas: 5, 6;<br>end: 0;<br>sca: 42, 0*;                | cox: 9, 3-4;<br>bas: 6, 6;<br>end: 0;<br>sca: 40*, 0*;                 | cox: 6, 2;<br>bas: 6, 7;<br>end: 0;<br>sca: 31-32, 2;             |
| mxpd 1    | cox: 5-7;<br>bas: 8-12;<br>end: 0-3;<br>exo: 1, 4-6;<br>epi: 3-5 or 7;   | cox: 7-8;<br>bas: 11or16;<br>end: 0or4;<br>exo: 1, 4-5;<br>epi: 5-6;    | cox: 7*;<br>bas: 8*;<br>end: 0*;<br>exo: 1, 4*;<br>epi: 6*;        | cox: 6;<br>bas: 10;<br>end: 0;<br>exo: 1, 4;<br>epi: 6;                | cox: 7;<br>bas: 11;<br>end: 0;<br>exo: 0, 4;<br>epi: 0*;          |
| mxpd 2    | end: 0,1,3,6;<br>exo: 0, 4-6;  | end: 0,1,3,6;<br>exo: 0, 4-5;   | end: 0,1,4,6*;<br>exo: 0, 4*;<br>epi: 6*                           | end: 0,1,4,7;<br>exo: 0, 4;  | end: 0,1,3,6;<br>exo: 0, 4;                                       |
| mxpd 3    | cox: 6or8*-10;<br>end: 9-13,7-9,4-6,5-6,4;<br>exo: 0, 5-6<br>epi: 7-9*;  | cox: 6-7;<br>end: 11-12,8-9,5-6,6,4;<br>exo: 0, 5;<br>epi: 9-10;        | cox: 3*;<br>end: 8,4,4,4,4*;<br>exo: 0*;<br>epi: 6*;               | cox: 8*;<br>end: 13-15,6-7,5,5,4;<br>exo: 0,6-7;<br>epi: 5;            | cox: 5;<br>end: 13,8,5,6,4;<br>exo: 0,4;<br>epi: 0*;              |
| abdomen   | S1-6: 6or8,6,6or8,4or6or8,6or8,0or2*;  | S1-6: 6or8,8,6,6,6or 8,0or2*;   | S1-6: 4*,2,2,2,2,2*;   | S1-6: 8*,6,4,4,6,2*;   | S1-6: 6,8,8,8,8,2*;   |

## RESUMO

O completo desenvolvimento larval de *Notolopas brasiliensis* é descrito, a partir de material criado em laboratório, com ênfase na morfologia externa de *Majoidea* e comparado aos demais gêneros de *Pisidae*. O desenvolvimento larval de *N. brasiliensis* consiste em dois estágios de zoea e um de megalopa. A duração média de cada estágio foi de  $4.2 \pm 1.0$  dias para a Zoea I e  $3.8 \pm 0.7$  dias para a Zoea II, a megalopa aparece entre  $8.1 \pm 0.4$  dias após a eclosão. Os caracteres previamente utilizados para definir as formas larvais de *Pisidae* ou são simplesiomórficos ou altamente homoplásticos. Foi observado que não existe um conjunto de caracteres capazes de definir *Pisidae* até o presente. Contudo foi mostrado que uma combinação de caracteres pode ser utilizada para diferenciar *Notolopas* dos demais gêneros da família.

PALAVRAS-CHAVE: Larval characters, *Notolopas*, spider crabs, Majidae, *Pisidae*.

## ACKNOWLEDGMENTS

We thank the crew of the oceanographic vessel Progresso and the students of NEBECC, Núcleo de Estudos em Biologia, Ecologia e Cultivo de Crustáceos, UNESP, Botucatu/SP, for their assistance during the field work. We are grateful to the Atlantic Reference Centre, Huntsman Marine Science Centre, St. Andrews, New Brunswick, Canada for the logistical help during the descriptive work. This work was supported through JP 99/10407-1 and 99/08256-5 to F.P.L. Marques and the operating grant 97/12106-8 to G. Bertini by the Fundação de Amparo à Pesquisa do Estado de São Paulo, State Government of São Paulo, Brazil, and by fellowship 33002010027p5 to William Santana by the CAPES (Coordenação de Aperfeiçoamento de Pessoal de Nível Superior), Federal Government, Brazil.

## REFERENCES

- Baisre, J.A. 1994. Phyllosoma larvae and the phylogeny of Palinuroidea (Crustacea: Decapoda): a review. *Australian Journal of Marine and Freshwater Research*, 45:925-944.
- De Bakker, C.; Montu, M.; Anger, K. & Harms, J. 1990. Larval development of a tropical spider crab, *Libinia ferreirae* Brito Capello, 1871 (Decapoda: Majidae), reared in the laboratory. *Meeresforsch*, 33:90-103.
- Boraschi, L. 1921. Osservazioni sulle larve dei Crostacei Decapodi. *Memorie Reale Comitato Talassografico Italiano*, 87:1-32.
- Boschi, E.E. & Scelzo, M.A. 1968. Larval development of the spider crab *Libinia spinosa* H. Milne Edwards, reared in the laborator (Brachyura, Majidae). *Crustaceana*, 2:170-180.
- Bourdillon-Casanova, L. 1960. Le meroplankton du Golfe de Marseille: Les larves de crustacés décapodes. *Recueil des Travaux de la Station Marine D'Endoume*, 30(18):1-286.
- Cano, G. 1893. Sviluppo e Morfologia degli Oxyrhynchi. *Mitteilungen aus der Zoologischen Station zu Neapel*, 10:527-583.
- Chhappgar, B.F. 1956. On the breeding habits and larval stages of some crabs of Bombay. *Records of Indian Museum*, 54:33-52.
- Clark, P.F.; De Calazans, D. & Pohle, G. 1998. Accuracy and standardization of brachyuran larval descriptions. *Invertebrate Reproduction and Development*, 33:127-144.
- Clark, P.F.; De Calazans, D. & Rodrigues, S. 1998a. *Libinia spinosa* H. Milne Edwards 1834 (Crustacea: Majidae: Pisinae): a reappraisal of larval characters from laboratory reared material. *Invertebrate Reproduction and Development*, 33(2-3):145-157.
- Clark, P.F. & Webber, W.R. 1991. A redescription of *Macrocheira kaempferi* (Temminck, 1836) zoeas with a discussion of the classification of the *Majoidea* Samouelle, 1819 (Crustacea: Brachyura). *Journal of Natural History*, 25:1259-1279.
- Fagetti, E. 1969. The larval development of the spider crab *Libidocheira granaria* H. Milne Edwards and Lucas under laboratory conditions (Decapoda Brachyura; Majidae, Pisinae). *Crustaceana*, 12:131-140.
- Fagetti, E. 1969a. Larval development of the spider crab *Pisoides edwardsi* (Decapoda, Brachyura) under laboratory conditions. *Marine biology*, 4:160-165.
- Gourret, P. 1884. Considerations sur la faune pélagique du Golfe de Marseille. Première partie. *Annales du Muséum de Histoire Naturelle de Marseille*, 11(2):12-101.
- Guerao, G.; Rufino, M. & Abelló, P. 2003. Morphology of the larval and first juvenile stages of the spider crab *Lissa chiragra* (Brachyura: Majidae: Pisinae). *Journal of Natural history*, 37:647-671.
- Gurney, R. 1924. The zoea of *Eurynome aspera*. *Journal of marine biology Association of United Kingdom*, 13:433-436.
- Heegaard, P. 1963. Decapod larvae from the Gulf of Napoli, hatched in captivity. *Videnskabelige Meddelelser fra Dansk Naturhistorisk Forening I Kjobenbaun*, 125:449-493.
- Hong, S.Y. 1988. Larval development of *Eurynome spinosa* Hailstone and re-examination of the zoeae of *Eurynome aspera* (Pennant) (Decapoda: Brachyura: Majida) reared in the laboratory. *Ocean research*, 10(1):115-124.
- Ingle, R.W. 1979. The larval development of the spider crab *Rochinia carpenteri* (Thomson) (Oxythyncha: Majidae) with a review of the majid subfamilial larval features. *Bulletin of the British Museum of Natural History, Zoology*, 37:47-66.
- Ingle, R.W. & Clark, P.F. 1980. The larval and post-larval development of Gibbi's spider crab, *Pisa armata* (Latreille) [family Majidae: subfamily Pisinae], reared in laboratory. *Journal of Natural History*, 14:723-735.
- Johns, D.M. & Lang, W.H. 1977. Larval development of the spider crab, *Libinia emarginata* (Majidae). *Fisbery Bulletin*, Washington, 75(4):831-841.
- Kim, D.N. & Hong, S.Y. 1999. Larval development of *Scyra compressipes* (Decapoda: Brachyura: Majidae: Pisinae) reared in the laboratory. *Journal of Crustacean Biology*, 19(4):782-791.
- Kinahan, J.R. 1858. Remarks on the zoe of *Eurynome aspera*, and the habits of the animal in confinement. *The Annals and Magazine of Natural History, Including Zoology, Botany and Geology*, 1:233-235.
- Kinahan, J.R. 1860. Remarks on the zoe of *Eurynome aspera*, and the habits of the animal in confinement. *Proceedings of the Natural History Society of Dublin*, 2:77-79.

- Ko, H.S. 1997. The first zoeal stage of *Hyastenus elongates* (Ortmann, 1893) (Decapoda, Brachyura, Majidae). *The Korean Journal of Systematic Zoology*, 13:1-8.
- Krishnan, T. & Kannupandi, T. 1987. Laboratory larval culture of a spider crab *Doclea muricata* (Fabricius, 1787) (Decapoda, Majidae). *Crustaceana*, 53(3):292-303.
- Krishnan, T. & Kannupandi, T. 1988. Larval development of the spider crab *Doclea gracilipes* Stimpson, 1857 (Decapoda: Brachyura: Majidae) reared in the laboratory. *Journal of Crustacean Biology*, 8:420-429.
- Kurata, H. 1969. Larvae of decapod Brachyura of Arasaki, Sagami bay. IV. Majidae. *Bulletin of the Tokay Regional Fisheries Research Laboratory*, 57:81-127.
- Lebour, M.V. 1928. The larval stages of the Plymouth Brachyura. *Proceedings of the Zoological Society of London*, 1928:473-560.
- Maas, A. & Waloszek, D. 2001. Larval development of *Euphausia superba* Dana, 1852 and a phylogenetic analysis of the Euphausiacea. *Hydrobiologia*, 448:143-169.
- Marques, F. & Pohle, G. 1995. Phylogenetic analysis of the Pinnotheridae (Crustacea, Brachyura) based on larval morphology, with emphasis on the *Dissodactylus* species complex. *Zoologica Scripta*, 24:347-364.
- Marques, F. & Pohle, G. 1998. The use of structural reduction in phylogenetic reconstruction of decapods and a phylogenetic hypothesis for fifteen genera of Majidae: testing previous hypotheses and assumptions. *Invertebrate Reproduction and Development*, 33:241-262.
- Marques, F. & Pohle, G. 2003. Searching for larval support for majoid families (Crustacea: Brachyura) with particular reference to Inachoididae Dana, 1851. *Invertebrate Reproduction and Development*, 43:71-82.
- Martin, J.W. & Davis, G.E. 2001. An updated classification of the recent Crustacea. *Contributions in science*, 39:1-124.
- Martin, J.W. & Laverack, M.S. 1992. On the distribution of the crustacean dorsal organ. *Acta Zoologica*, 73(5):357-368.
- Melo, G.A.S. 1996. *Manual de identificação dos Brachyura (caranguejos e siris) do litoral brasileiro*. Plêiade/FAPESP, São Paulo.
- Miers, E.J. 1886. Report on the Brachyura collected by H. M. S. Challenger during the years 1873-1876. Report on the Scientific Results of the Voyage of H. M. S. Challenger during the years 1873-76, *Zoology*, New York, 49(17):1-362.
- Mohan, R. & Kannupandi, T. 1985. Life history of laboratory reared spider crab *Doclea ovis* (Herbst). *Indian Journal of Marine Sciences*, 14:24-30.
- Pohle, G.W. & Marques, F.P.L. 1998. Phylogeny of the Pinnotheridae: Larval and adult evidence, with emphasis on the evolution of gills. *Invertebrate Reproduction and Development*, 33(2-3):229-239.
- Pohle, G.W. & Marques, F.P.L. 2000. Larval stages of *Paradasygius depressus* (Bell, 1835) (Brachyura: Majidae) and a phylogenetic hypothesis for 21 genera of Majidae. *Proceedings of the Biological Society of Washington*, 113(3):739-760.
- Pohle, G. & Telford, M. 1981. Morphology and classification of decapod crustacean larval setae: a scanning electron microscope study of *Dissodactylus crinitichelis* Moreira, 1901 (Brachyura: Pinnotheridae). *Bulletin of Marine Science*, 31:736-752.
- Provenzano, A.J. & Brownell, W.N. 1977. Larval and early post-larval stages of the West Indian spider crab *Mithrax spinosissimus* (Lamarck) (Decapoda: Majidae). *Proceedings of the Biological Society of Washington*, 90:735-752.
- Rathbun, M.J. 1914. Stalked-eyed crustaceans collected at the Monte Bello Islands. *Proceedings of the Zoological Society of London*, 653-664.
- Rathbun, M.J. 1923. The brachyuran crabs collected by the U.S. Fisheries Steamer "Albatross" in 1911, Chiefly on the west coast of Mexico. *Bulletin of the American Museum of Natural History*, 48:610-637.
- Rodriguez, A. 1997. Larval and postlarval development of *Pisa tetraodon* (Pennant, 1777) (Decapoda: Majidae) reared in the laboratory. *Journal of Plankton Research*, 19(1):29-41.
- Salman, D.S. 1982. Larval development of the spider crab *Eurynome aspera* (Pennant), reared in the laboratory with a key to the known larvae of the subfamily Pisinae (Brachyura, Majidae). *Crustaceana*, 43(1):78-88.
- Sandifer, P.A. & Van Engel, W.A. 1971. Larval development of the spider crab, *Libinia dubia* H. Milne Edwards (Brachyura, Majidae, Pisinae), reared in laboratory culture. *Chesapeake Science*, 12(1):18-25.
- Sankolli, K.N. & Shenoy, S. 1975. On a new record of a majid crab, *Doclea hybrida* (Fabricius) from the Maharashtra waters and its life history. *Journal of the Marine Biological Association of India*, 17:126-137.
- Santana, W.; Pohle, G.W. & Marques, F.P.L. 2003. Zoeal stages and megalopa of *Mithrax hispidus* (Herbst, 1790) (Decapoda: Brachyura: Majoidea: Mithracidae): a reappraisal of larval characters from laboratory cultured material and a review of larvae of the *Mithrax* - *Mithraculus* species complex. *Invertebrate Reproduction and Development*, 44(1):17-32.
- Santana, W.; Pohle, G.W. & Marques, F.P.L. 2004. Larval development of *Apiomithrax violaceus* (A. Milne Edwards, 1868) (Decapoda: Brachyura: Majoidea: Pisidae) reared in laboratory conditions, and a review of larval characters of Pisidae. *Journal of Natural History*, 38:1773-1797.
- Terada, M. 1983. Larval development of four Japanese spider crabs (Brachyura, Majidae, Pisinae). *Proceedings of the Japanese Society of Systematic Zoology*, 25:18-30.
- Wear, R.G. & Fielder, D.R. 1985. The marine fauna of New Zealand: larvae of the Brachyura (Crustacea, Decapoda). *New Zealand Oceanographic Institute Memoir*, 92:1-90.
- Webber, W.R. & Wear, R.G. 1981. Life history studies on New Zealand Brachyura. 5A. Larvae of the family Majidae. *New Zealand Journal of Marine and Freshwater Research*, 15:331-383.
- Yang, W.T. 1967. *A study of zoeal, megalopal, and early crab stages of some oxyrhynchus crabs (Crustacea: Decapoda)*. University of Miami. (Ph. D. Dissertation).

Recebido em: 14.07.2006

Aceito em: 23.11.2006

## EDITORIAL COMMITTEE

**Editor-in-Chief:** Hussam Zaher, Serviço de Vertebrados, Museu de Zoologia, Universidade de São Paulo, Caixa Postal 42.494, CEP 04218-970, São Paulo, SP, Brasil. E mail: hzaher@ib.usp.br.

**Associate Editors:** Carlos José Einicker Lamas (Universidade de São Paulo, Brasil), Antonio Carlos Marques (Universidade de São Paulo, Brasil), Mário César Cardoso de Pinna (Universidade de São Paulo, Brasil), Sergio Antonio Vanin (Universidade de São Paulo, Brasil).

**Editorial Board:** Aziz Nacib Ab'Saber (Universidade de São Paulo, Brasil); Rüdiger Bieler (Field Museum of Natural History, U.S.A.); Walter Antonio Pereira Boeger (Universidade Federal do Paraná, Brasil); Carlos Roberto Ferreira Brandão (Universidade de São Paulo, Brasil); James M. Carpenter (American Museum of Natural History, U.S.A.); Ricardo Macedo Corrêa e Castro (Universidade de São Paulo, Brasil); Darrel R. Frost (American Museum of Natural History, U.S.A.); William Ronald Heyer (National Museum of Natural

History, U.S.A.); Ralph W. Holzenthal (University of Minnesota, U.S.A.); Adriano Brillhante Kury (Museu Nacional, Rio de Janeiro, Brasil); John G. Maisey (American Museum of Natural History, U.S.A.); Náércio Aquino Menezes (Universidade de São Paulo, Brasil); Christian de Muizon (Muséum National d'Histoire Naturelle, Paris, France); Gerardo Lamas Müller (Museo de Historia Natural "Javier Prado", Lima, Peru); Nelson Papavero (Universidade de São Paulo, Brasil); James L. Patton (University of California, Berkeley, U.S.A.); Richard O. Prum (University of Kansas, U.S.A.); Marcos André Raposo (Museu Nacional, Rio de Janeiro, Brasil); Olivier Rieppel (Field Museum of Natural History, U.S.A.); Miguel Trefaut Urbano Rodrigues (Universidade de São Paulo, Brasil); Randall T. Schuh (American Museum of Natural History, U.S.A.); Ubirajara Ribeiro Martins de Souza (Universidade de São Paulo, Brasil); Marcos Tavares (Universidade de São Paulo, Brasil); Paulo Emílio Vanzolini (Universidade de São Paulo, Brasil); Richard P. Vari (National Museum of Natural History, U.S.A.); Mario de Vivo (Universidade de São Paulo, Brasil); Paulo Secchin Young (Museu Nacional, Rio de Janeiro, Brasil).

## INSTRUCTIONS TO AUTHORS (MAY 2002)

**General Information:** *Papéis Avulsos de Zoologia* covers primarily the fields of Zoology, publishing original contributions in systematics, paleontology, evolutionary biology, ecology, taxonomy, anatomy, behavior, functional morphology, molecular biology, ontogeny, faunistic studies, and biogeography. *Papéis Avulsos de Zoologia* also encourages submission of theoretical and empirical studies that explore principles and methods of systematics.

Lists and catalogs should be submitted to the Arquivos de Zoologia.

All contributions must follow the International Code of Zoological Nomenclature. Relevant specimens should be properly curated and deposited in a recognized public or private, non-profit institution. Tissue samples should be referred to their voucher specimens and all nucleotide sequence data (aligned as well as unaligned) should be submitted to GenBank (<http://www.ncbi.nih.gov/Genbank/>) or EMBL (<http://www.ebi.ac.uk/>).

**Peer Review:** All submissions to *Papéis Avulsos de Zoologia* are subject to review by at least two referees and the Editor-in-Chief. Three legible copies (including photocopies of original illustrations) and original illustrations must be submitted; all authors will be notified of submission date. Authors may suggest potential reviewers. Communications regarding acceptance or rejection of manuscripts are made through correspondence with the first or corresponding author only. Once a manuscript is accepted providing changes suggested by the referees, the author is requested to return a revised version incorporating those changes (or a detailed explanation of why reviewer's suggestions were not followed) within four weeks upon receiving the communication by the editor. Revised manuscripts must be submitted as both hard copy and electronic file (3.5" disk, Zip Drive, or CD Rom with text in Microsoft Word format). Figures and graphics should be sent separately (".jpg", ".tif", ".xls", ".cdr").

**Proofs:** Page-proofs with the revised version will be sent to the first or corresponding author. Page-proofs must be returned to the editor in two weeks, preferentially within 48 hours. Failure to return the proof promptly may be interpreted as approval with no changes and/or may delay publication. Only necessary corrections in proof will be permitted. Once page proof is sent to the author, further alterations and/or significant additions of text are permitted only at the author's expense or in the form of a brief appendix ("note added in proof").

**Submission of Manuscripts:** Manuscripts should be sent to the Editor-in-Chief (H. Zaher, Museu de Zoologia da USP, Caixa Postal 42.494, CEP 04218-970, São Paulo, SP, Brasil). Manuscripts are considered on the understanding that they have not been published or will not appear elsewhere in substantially the same or abbreviated form. The criteria for acceptance of articles are: quality and relevance of research, clarity of text, and compliance with the guidelines for manuscript preparation.

Manuscripts should be written preferentially in English, but texts in Portuguese or Spanish will also be considered. Studies with a broad coverage are encouraged to be submitted in English. All manuscripts should include an abstract in Portuguese and English regardless of the original language.

Authors are requested to pay attention to the instructions concerning the preparation of the manuscripts. Close adherence to the guidelines will expedite processing of the manuscript, whereas manuscripts deviating from the required form will be returned for revision prior to review.

**Manuscript Form:** Manuscripts should not exceed 100 pages of double-spaced typescript on 21 by 29.7 cm (A4 format) or 21.5 by 28 cm (letter format) paper, with wide margins. The pages of the manuscript should be numbered consecutively.

The text of articles should be arranged in the following order: Title Page, Abstracts, Body of Text, Literature Cited, Tables, Appendices, and Figure Captions. Each of these sections should begin on a new page. All typescript pages must be double-spaced.

- (1) **Title Page:** This should include the title, author(s) name(s), institutions, and keywords in English as well as in the language of the manuscript, and a short

running title in the language of the manuscript. The title should be concise and, where appropriate, should include mention of families and/or higher taxa. Names of new taxa should not be included in titles.

- (2) **Abstract:** All papers should have an abstract in English and another in Portuguese, regardless of the original language. The abstract is of great importance as it may be reproduced elsewhere. It should be in a form intelligible if published alone and should summarize the main facts, ideas, and conclusions of the article. Telegraphic abstracts are strongly discouraged. Include all new taxonomic names for referencing purposes. Abbreviations should be avoided. It should not include references. Abstracts should not exceed 350 words.
- (3) **Body of Text:** The main body of the text should include the following sections: Introduction, Materials and Methods, Results, Discussion, and Acknowledgments at end. Primary headings in the text should be in capital letters and centered; the following text should begin on the next line, indented. Secondary headings should be in capital and lowercase letters and flush left; the following text should begin on the next line, indented. Tertiary headings should be in capital and lower case letters, in italics and indented; the following text should be on the same line and separated from the heading by a hyphen.
- (4) **Literature Cited:** Citations in the text should be given as: Silva (1998)..., Silva (1998:14-20)..., Silva (1998: figs. 1, 2)..., Silva (1998a, b)..., Silva & Oliveira (1998)..., (Silva, 1998)..., (Rangel, 1890; Silva & Oliveira, 1998a, b; Adams, 2000)..., (Silva, pers. comm.)..., (Silva *et al.*, 1998), the latter when the paper has three or more authors. The reference need not be cited when author and date are given only as authority for a taxonomic name. The literature section should be arranged strictly alphabetically and given in the following format:

**Journal Article** – Silva, H.R.; Oliveira, H. & Rangel, S. Year. Article title. Journal name, 00:000-000. Names of journals must be spelled out in full.

**Books** – Silva, H.R. Year. Book title. Publisher, Place.

**Articles in Books** – Silva, H.R. Year. Article title. In: Oliveira, H. & Rangel, S. (Eds.), Book title. Publisher, Place, p.000-000.

**Articles in Larger Works** – Silva, H.R. Year. Article title. In: H. Oliveira & S. Rangel (Eds.), Title of Larger Work. Serial Publication. Publisher, Place, p.000-000.

**Dissertations and Theses** – Silva, H.R. Year. Dissertation title. Ph.D. Dissertation, University, Place.

**Electronic Publications** – Silva, H.R. Year. Article title. Available at: <http://www.mz.usp.br>.

**Tables:** All tables must be numbered in the same sequence in which they appear in the text. Authors are encouraged to indicate where the tables should be placed in the text. They should be comprehensible without reference to the text. Tables should be formatted with horizontal, not vertical, rules. In the text, tables should be referred as Table 1, Tables 2 and 3, Tables 2-6. Use "TABLE" in the table heading.

**Illustrations:** Figures should be numbered consecutively, in the same sequence they appear in the text. Separate illustrations of a composite figure should be identified by capital letters and referred in the text as so (fig. 1A). Where possible, letters should be placed in the lower right corner of each illustration of a composite figure. Hand-written lettering on illustrations is unacceptable. Illustrations should be mounted on stout, white cardboard. Figures should be mounted in order to minimize blank areas between separate illustrations. High quality color or black and white photographs, and computer generated figures are preferable. Authors are encouraged to indicate where the figures should be placed in the text. Use "(Fig(s).)" and "Figure(s)" for referring to figures in the text, but "FIGURE(S)" in the figure captions and "(fig(s).)" when referring to figures in another paper.

For other details of manuscript preparation of format, consult the CBE Style Manual, available from the Council of Science Editors (<http://www.councilscienceeditors.org/publications/style.cfm>).

*Papéis Avulsos de Zoologia* and *Arquivos de Zoologia* are publications of the Museu de Zoologia da Universidade de São Paulo ([www.mz.usp.br](http://www.mz.usp.br)).