

FIGURE 13.—*Callinectes rathbunae* Contreras: a, chelae in frontal view; b, carapace; d, abdomen and sternal area, female; c, abdomen and sternal area, male, USNM 122922, Laguna de Alvarado, Veracruz, Mexico; a, b $\times 1$; c, d $\times 1.1$.

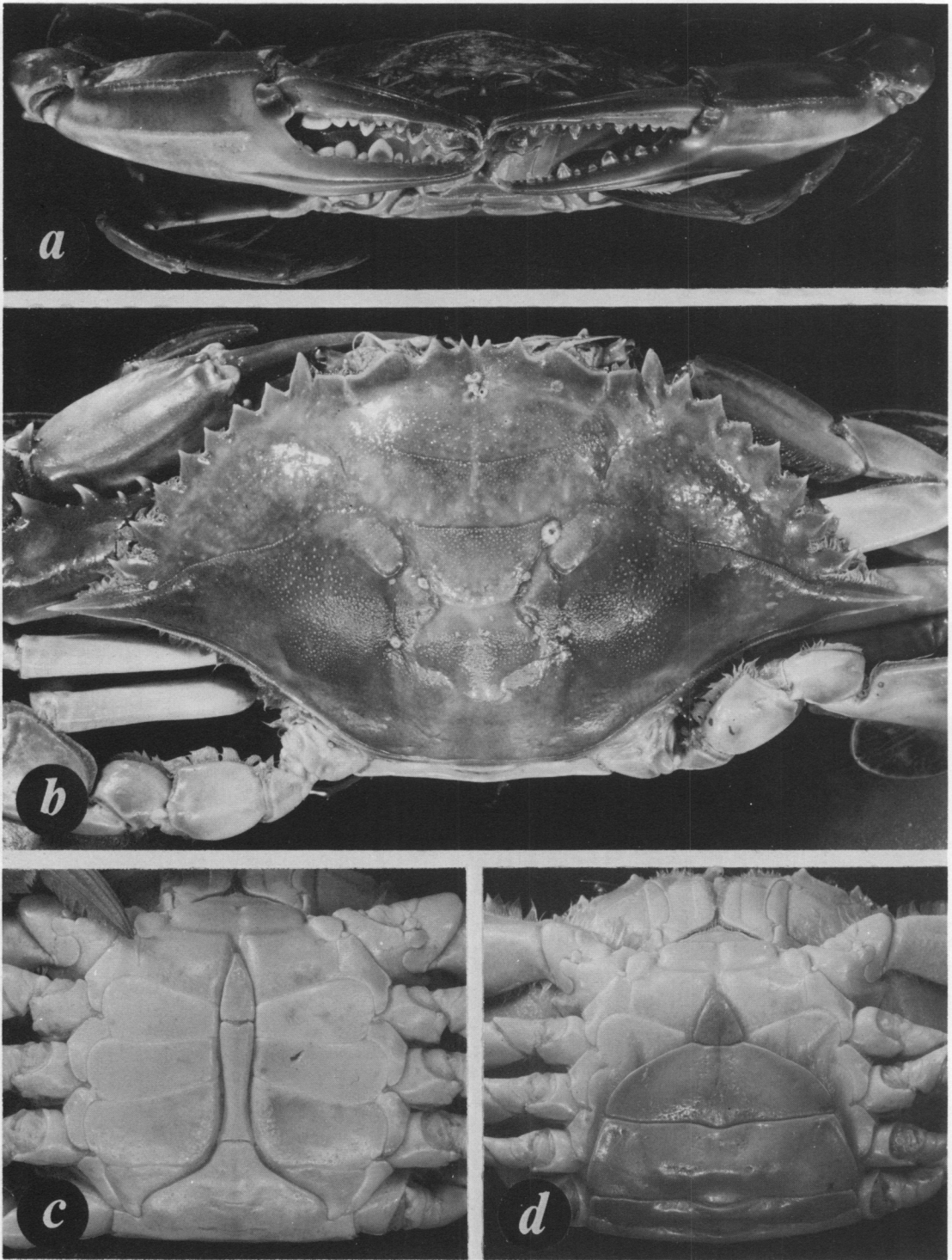


FIGURE 14.—*Callinectes maracaiboensis* Taissoun: a, chelae in frontal view, male, USNM 143392, Lago de Maracaibo; b, carapace, male, USNM 143393, Puerto Caballo, Maracaibo; c, abdomen and sternal area, male; d, abdomen and sternal area, female, USNM 139621, Lago de Maracaibo, Venezuela; a $\times 0.95$; b $\times 0.85$; c, d $\times 1$.