

## Establishment of a New Genus for *Arete borradalei* Coutière, 1903 and *Athanas verrucosus* Banner and Banner, 1960, with Redefinitions of *Arete* Stimpson, 1860 and *Athanas* Leach, 1814 (Crustacea: Decapoda: Alpheidae)

Arthur Anker<sup>1,\*</sup> and Ming-Shiou Jeng<sup>2</sup>

<sup>1</sup>Smithsonian Tropical Research Institute, Naos Unit 0948, APO AA 34002-0948, USA. E-mail: anker@si.edu

<sup>2</sup>Research Center for Biodiversity, Academia Sinica, Taipei 115, Taiwan. E-mail: jengms@gate.sinica.edu.tw

(Accepted October 5, 2006)

**Arthur Anker and Ming-Shiou Jeng (2007)** Establishment of a new genus for *Arete borradalei* Coutière, 1903 and *Athanas verrucosus* Banner and Banner, 1960, with redefinitions of *Arete* Stimpson, 1860 and *Athanas* Leach, 1814 (Crustacea: Decapoda: Alpheidae). *Zoological Studies* 46(4): 454-472. *Arete borradalei* Coutière, 1903 and *Athanas verrucosus* Banner and Banner, 1960 are transferred to *Rugathanas* gen. nov., based on several unique features on the chelipeds, 3rd pereopods, antennules, and mouthparts. The establishment of *Rugathanas* enables the redefinition of *Athanas* Leach, 1814 and *Arete* Stimpson, 1860, and a formal revalidation of *Arete*, formerly a synonym of *Athanas*. Two important features, the number of pereopodal epipods and the number of carpal segments of the 2nd pereopod, are variable within *Rugathanas* gen. nov., but may be used to distinguish *Athanas* from *Arete*. The distribution ranges of *R. borradalei* (Coutière, 1903) comb. nov. and *R. verrucosus* (Banner and Banner, 1960) comb. nov. are considerably extended based on recently collected material from the Ryukyu Is., Japan; Kenting, southern Taiwan; and Norfolk I., off eastern Australia. <http://zoolstud.sinica.edu.tw/Journals/46.4/454.pdf>

**Key words:** Alpheidae, New genus, *Athanas*, *Arete*, Indo-Pacific.

The alpheid shrimp genus *Athanas* Leach, 1814 *sensu lato* (*sensu* Banner and Banner 1960 1973, Chace 1988) presently includes over 40 species in the eastern Atlantic and Indo-West Pacific. Most species are small (< 10 mm in total length) and inhabit coral reefs and rocky or muddy-sandy bottoms; some species live in symbiosis (commensalism) with other animals, such as thalassinideans, stomatopods, and echinoderms (Suzuki 1970, Banner and Banner 1973, Gherardi 1991, Froglija and Atkinson 1998, Anker et al. 2001, Hayashi 2002, Marin et al. 2005). *Athanas* species are mainly characterized by the presence of a triangular articulated plate on the 6th abdominal segment, and a well-developed, distally acute rostrum. The variously developed orbital teeth, and highly variable chelipeds, often

armed with teeth, but without a fossa-tooth mechanism (e.g., Chace 1988) suggest that *Athanas sensu lato* is a highly heterogeneous and perhaps non-monophyletic assemblage.

Banner and Banner (1960) questioned the validity of *Arete* Stimpson, 1860. They considered the features used by Coutière (1899 1903) to distinguish between *Arete* and *Athanas* invalid, e.g., the number of pereopodal epipods (2 in *Arete* and 3 in *Athanas*) and the number of segments in the carpus of the 2nd pereopod (4 in *Arete* and 5 in *Athanas*), and formally placed *Arete* in synonymy of *Athanas*. Although several workers (e.g., Holthuis 1993, Hayashi 1995, Nomura et al. 1996) continued to treat *Arete* as a valid genus, without discussing the synonymy proposed by Banner and Banner (1960), the majority of workers accepted

\*To whom correspondence and reprint requests should be addressed.

this synonymy (e.g., Chace 1988). However, Banner and Banner (1982) recognized that 2 closely related species originally described as *Arete borradalei* Coutière, 1903 and *Athanas verrucosus* Banner and Banner, 1960 did not fit into either the generic diagnoses of *Arete* nor *Athanas*, and proposed reconsidering the validity of *Arete*, a suggestion they subsequently did not return to.

Both *Are. borradalei* and *Ath. verrucosus* are rarely collected shrimps. The latter species was until now only known from the type locality, Enewetak Atoll, Marshall Is. (Banner and Banner 1960). This is partly due to the small size and cryptic lifestyles of these shrimps, which usually live in crevices of dead and living corals or in porous rocks overgrown with coralline algae. The only efficient method of collecting this type of cryptofauna is to carefully hammer these rocks apart to extract small animals from deep holes and crevices. During the first author's (AA) field trip to Kenting National Park, southern Taiwan, 1 specimen of *Ath. verrucosus* was extracted by this method from dead coral rubble, collected from shallow water near the shore. We also examined several specimens of this species from Emily Bay, Norfolk I., off New South Wales, Australia, deposited in the Museum and Art Gallery of the Northern Territory, Darwin, Australia (NTM). The second author (MSJ) previously collected several specimens of *Are. borradalei* in Kenting. Through the courtesy of Keiichi Nomura (Kushimoto Marine Park Center, Kushimoto, Japan) we were able to study 4 specimens of *Are. borradalei* from the Ryukyu Archipelago. In addition, we examined 2 specimens of *Are. borradalei* from the southwestern Indian Ocean previously reported by Banner and Banner (1983), and numerous specimens of *Athanas* and *Arete* deposited in various museums.

The morphological features of *Are. borradalei* and *Ath. verrucosus* clearly set these 2 species apart from all other species of *Athanas* or *Arete*. Therefore, a new genus, *Rugathanas* gen. nov., is herein established to accommodate these 2 species and formally resurrect *Arete* from synonymy of *Athanas*. *Arete sensu stricto* (*sensu* Stimpson 1860, not *sensu* Coutière 1903) and *Athanas sensu stricto* (*sensu* Coutière 1899 1903, not *sensu* Banner and Banner 1960) are redefined.

## MATERIAL AND METHODS

The material used in this study is deposited in the collections of the Museum and Art Gallery of

the Northern Territory, Darwin, Australia (NTM); the Natural History Museum and Institute, Chiba, Japan (CBM); the Muséum national d'Histoire naturelle, Paris, France (MNHN); the Zoological Reference Collection, Raffles Museum of Biodiversity Research, National University of Singapore, Singapore (ZRC); Academia Sinica, Taipei, Taiwan (ASIZ); and the Naturhistorisches Museum in Wien, Vienna, Austria (NHMW).

All drawings were made with the aid of a camera lucida. The carapace length (CL) and total length (TL) were measured in millimeters from the tip of the rostrum to the posterior margin of the carapace and telson, respectively. In cheliped descriptions, the terms equal, subequal, and unequal refer to size, while symmetrical, subsymmetrical, and asymmetrical refer to shape (general shape of the palm, armature of the fingers, etc.). Abbreviations used in the text include: Ar, arthrobranch; Ep, lobe-shaped epipod; Ex, exopod; Ma, mastigobranch (strap-like epipod); Mxp, maxilliped; P, pereopod; Pd, podobranch; Pl, pleurobranch; r, rudimentary; Se, setobranch; +, present; -, absent.

## TAXONOMY

### *Rugathanas* gen. nov.

*Diagnosis:* Body stout. Carapace smooth, not setose. Frontal margin with relatively short, somewhat ascendant rostrum, bearing acute tip, with or without subdistal tooth on ventral margin. Extra-corneal teeth strong, acute, reaching or protruding beyond anterior margin of eyes; supra-corneal teeth usually well developed, acute; infra-corneal teeth reduced or absent. Orbital hoods absent; eyes exposed in dorsal and lateral views. Pterygostomial margin angular, protruding, not acute. Cardiac notch well developed. Second abdominal pleuron greatly expanded in females. Sixth abdominal somite with articulated plate at posteroventral angle; preanal plate rounded. Antennules with minute teeth on distal margin of first segment; ventromesial carina of 1st segment without tooth; lateral flagellum with rudimentary secondary ramus. Antenna with stout basicerite, with or without distolateral tooth; scaphocerite short, broadly oval-shaped. Mandible with palp, incisor process greatly expanded, distally with at least 15 min teeth. Maxillule with bilobed palp, ventral lobe with 1 seta, dorsal lobe unarmed. Labrum swollen, conspicuously protruding, visible in lateral view. Third maxilliped with penultimate segment as long as wide; ultimate segment with

unarmed tip. First pereopods (chelipeds) sexually dimorphic, carried flexed; coxa unarmed mesially; basis with rudimentary exopod; ischium robust, unarmed mesially; chelae without linea impressa on palm or cavity-tooth system on fingers. Male chelipeds subequal or unequal, subsymmetrical or asymmetrical (with major cheliped situated either on left or right side); ischium armed with spines on dorsal and usually ventral margin; merus swollen, distally depressed; carpus elongated, vase-shaped, excavated ventrally; chela enlarged, oval, compressed, slightly convex mesially, flattened laterally, dorsal and ventral margins rugose; linea impressa absent; fingers unarmed or armed with simple teeth. Female chelipeds equal, symmetrical; ischium usually unarmed or armed with several spines on dorsal margin; merus not or slightly inflated, flattened ventrally; carpus cup-shaped, more or less excavated ventrally; chela varying from oval-shaped to slender, with smooth or rugose margins, fingers unarmed. Carpus of 2nd pereopod bearing 4 or 5 segments. Third pereopod with unarmed ischium and merus; carpus with 1 distal spine on ventral margin; propodus with numerous ventral spines; dactylus simple, highly extensible dorsally. Fifth pereopod with feebly developed propodal brush. Second pleopod with appendix interna and appendix masculina in males, with appendix interna only in females. Telson with 2 pairs of dorsal spines and 2 pairs of posterolateral spines; anal tubercles absent. Gill/exopod formula showing great variation in number of epipods (mastigobranchs/setobranchs), as summarized in following table.

	Mxp1	Mxp2	Mxp3	P1	P2	P3	P4	P5
Pl	-	-	-	+	+	+	+	+
Ar	-	-	-	-	-	-	-	-
Pd	-	-	-	-	-	-	-	-
Ep	+	+	-	-	-	-	-	-
Ma	-	-	-/+	-/+	-/+	-	-	-
Se	-	-	-	-/+	-/+	-/+	-	-
Ex	+	+	+	r	r	-	-	-

*Type species: Rugathanas verrucosus* (Banner and Banner, 1960) comb. nov. [*Athanas verrucosus* Banner and Banner 1960: 147]; type locality: Enewetak Atoll, Marshall Is.

*Other species included: Rugathanas borradalei* (Coutière, 1903) comb. nov. [*Arete borradalei* Coutière 1903: 80]; type locality: Hulule Male Atoll, the Maldives.

*Etymology: Rugathanas* is a combination of the Latin adjective *ruga* (rugged, uneven), referring

to the characteristic rugosities on the margins of the male chelae, and *Athanas* (a Greek king), referring to its affinity with the genus *Athanas*.

*Distribution:* Indo-West Pacific from the Red Sea and Madagascar to Japan, Australia, and Samoa.

*Remarks: Rugathanas* may be separated from both *Athanas* and *Arete* by numerous features on the frontal margin of the carapace, antennules, antennae, chelipeds, and mandible. For instance, *Rugathanas* is characterized by the unique shape of the male (and sometimes female) chelipeds. The oval-shaped palm, compressed and flattened laterally and with rugose dorsal and ventral margins, and the vase-shaped, ventrally excavated carpus (Figs. 1a, 2l, m, 3c-e, 4a, 5b, c) are externally the most obvious features separating *Rugathanas* from *Arete* and *Athanas*. The configuration of the frontal margin of the carapace of *Rugathanas* is also characteristic of the genus (Figs. 2a, b, 3a, b, 5a), the most important features being the relatively short, ascendant rostrum, often with a small subdistal tooth on the ventral margin (vs. a long, straight rostrum, without a ventral tooth in *Athanas* and *Arete*); the presence of supra-orbital teeth (absent in all *Arete* and most *Athanas* species, with the exceptions of *Ath. djiboutensis* Coutière, 1897 and *Ath. areteformis* Coutière, 1903, cf. Fig. 8b); the absence of infra-corneal teeth (usually absent in *Arete*, but often present in *Athanas*); and the presence of strong extra-corneal teeth reaching or sometimes protruding well beyond the anterior margin of the cornea (vs. usually not reaching far beyond this margin in *Arete* and *Athanas*, but with some exceptions, e.g., *Ath. areteformis*, cf. Fig. 8a).

*Rugathanas* also differs from *Arete* and *Athanas* by the considerably expanded incisor process of the mandible ("psalistome" in Banner and Banner 1960), which is distally furnished with numerous (usually more than 15) minute teeth (Figs. 2g, h). In *Arete* and *Athanas*, the incisor process is not or only slightly expanded, distally bearing 5-12 teeth (A. Anker pers. obs.). One notable exception is again *Ath. areteformis*, in which the incisor process is also expanded and distally bears around 15 teeth (Figs. 8c, d). However, this species has very differently shaped chelipeds (Figs. 8e-j) and plainly belongs to the genus *Athanas* (see below). In species of *Rugathanas*, the labrum is greatly swollen (Fig. 2c), sometimes conspicuously protruding in lateral view (Fig. 3b), apparently to accommodate the expanded incisor process of the mandible. In con-

trast, the labrum of *Ath. areteformis* is only moderately swollen and not visible in lateral view.

Other features distinguishing *Rugathanas* from *Arete* and *Athanas* are the stouter and (compared to other antennal parts) larger basicerite (Figs. 2a, 3b); the unarmed ventromesial carina on the 1st antennular segment (Fig. 2d) (vs. armed with strong tooth in all species of *Arete* and *Athanas*, partly visible in figure 8a; see also Bruce 1990); the tip of the ultimate segment of the 3rd maxilliped without spines (vs. with spines in all *Arete* and most *Athanas* species); and the dorsally more extensible dactylus of the 3rd-5th pereopods, which can be placed in an almost perpendicular position to the propodus (Figs. 2p, q). This unusually flexible articulation is strikingly similar to that of the unrelated alpheid genus *Metalpheus* Coutière, 1906, in which, however, the dactylus extension is facilitated by a small ventral sclerite (Banner 1959). *Rugathanas* also differs from *Athanas* by the strongly dentate margin of the 1st and 2nd segments of the antennular peduncle (Figs. 3a, 5a) (vs. straight or finely toothed in *Athanas*), and the much shorter penultimate segment of the 3rd maxilliped, which is about as long as wide in *Rugathanas* (Fig. 2k) (vs. distinctly longer than wide in *Athanas*).

The number of carpal segments in the 2nd pereopod varies from 4 in *R. borradailei* (Fig. 2o) to 5 in *R. verrucosus* (Fig. 4a). The strap-like epipods (mastigobranchs) are present on the 3rd maxilliped and 1st and 2nd pereopods in *R. verrucosus*, but are absent in *R. borradailei*. Although these 2 important characters are variable within *Rugathanas*, they remain valuable for differentiating *Rugathanas* from *Arete sensu stricto* and *Athanas sensu stricto* (see below). Within the Alpheidae, an intrageneric variation in the number of carpal segments is not rare and also occurs in *Synalpheus* Bate, 1888 (4 to 5, see Banner and Banner 1975), *Leptalpheus* Williams, 1965 (4 to 5, see Anker et al. 2006c), *Alpheopsis* Coutière, 1896, and *Prionalpheus* Banner and Banner 1960 (3-5, see Banner and Banner 1971 1973, Bruce 1990b, Martínez-Iglesias and Carvacho 1991). Similarly, intrageneric variation in the number of pereopodal epipods was also reported in at least 2 other genera, *Alpheopsis* (2-4, see Coutière 1899, Anker et al. 2005) and *Athanas* (see below).

*Rugathanas*, *Athanas* and *Arete* are part of a larger generic complex (athanoid complex); other athanoid genera are *Athanopsis* Coutière, 1896 (5 species), *Pseudathanas* Bruce, 1983 (1 species), *Acanthanas* Anker, Poddoubtchenko and Jeng,

2006 (1 species), and *Aretopsis* De Man, 1910 (1 or 2 species). This complex forms a well-defined monophyletic clade (the clade AP of Anker et al. 2006a) within the family Alpheidae. According to Anker et al. (2006a) *Athanopsis* and *Pseudathanas* are sister genera, as are *Arete* and *Aretopsis*. *Rugathanas* (represented by *R. borradailei*) formed a sister group to *Athanas*. *Athanas* was found to be non-monophyletic; however, first, this genus was not adequately represented in this analysis, and second, the position of *Ath. squillophilus* as a sister to *Athanopsis* and *Pseudathanas* is rather questionable. The recently described *Acanthanas* was not included in Anker et al.'s (2006a) cladogram, but based on its morphological features (see Anker et al. 2006b), this genus appears to form a separate lineage somewhere within the clade *Athanas - Rugathanas*.

#### Key to the genera of the athanoid generic complex and to the species of *Rugathanas*

- 1a. Rostrum distally rounded ..... 2
- 1b. Rostrum distally acute ..... 3
- 2a. Chelipeds always carried extended, with dactylus in ventral position ..... *Aretopsis*
- 2b. Chelipeds carried flexed (propodus fitting in a deep excavation on merus), dactylus in dorsal or dorsolateral position when chela extended ..... *Athanopsis*
- 3a. Eystalks with two conspicuously projecting acute spines ..... *Acanthanas*
- 3b. Eystalks without spines ..... 4
- 4a. Diaeresis of uropodal exopod with row of spines ..... *Pseudathanas*
- 4b. Diaeresis of uropodal exopod without spines ..... 5
- 5a. Male chelipeds with oval-rounded chelae, palm with rugose margins, carpus vase-shaped, ventrally excavated; labrum swollen, protruding; mandible with greatly expanded incisor process; supra-orbital teeth present ..... *Rugathanas* 6
- 5b. Male chelipeds with elongated or oval-shaped chelae, palm with non-rugose margins (sometimes with tubercles), carpus variably shaped; labrum neither swollen nor protruding; incisor process of mandible not or only slightly expanded; supra-orbital teeth present or absent ..... 7
- 6a. Strap-like epipods absent; 2nd pereopod with 4-segmented carpus; male chelipeds asymmetrical; female chelipeds only slightly enlarged ..... *R. borradailei*
- 6b. Strap-like epipods present on Mxp3 and P1-2; 2nd pereopod with 5-segmented carpus; male chelipeds subsymmetrical; female chelipeds greatly enlarged ..... *R. verrucosus*
- 7a. Strap-like epipods present on Mxp3 and P1-2; 2nd pereopod with 4-segmented carpus; cheliped ischium with strong process mesially; supra-orbital teeth absent ..... *Arete*
- 7b. Strap-like epipods present on Mxp3 and P1-3 (exceptionally on P1-2 or P1-4); 2nd pereopod with 5-segmented carpus; cheliped ischium without a strong process mesially; supra-orbital teeth absent or present ..... *Athanas*

***Rugathanas borradailei* (Coutière, 1903) comb. nov.**

(Figs. 1-3, 6a)

*Arete borradailei* Coutière 1903: 80, figs. 19-24; Coutière 1905: 861, fig. 133; Jacquotte 1964: 180; Banner and Banner 1966a: 152; Banner and Banner 1983: 73; Chace 1988: 61.

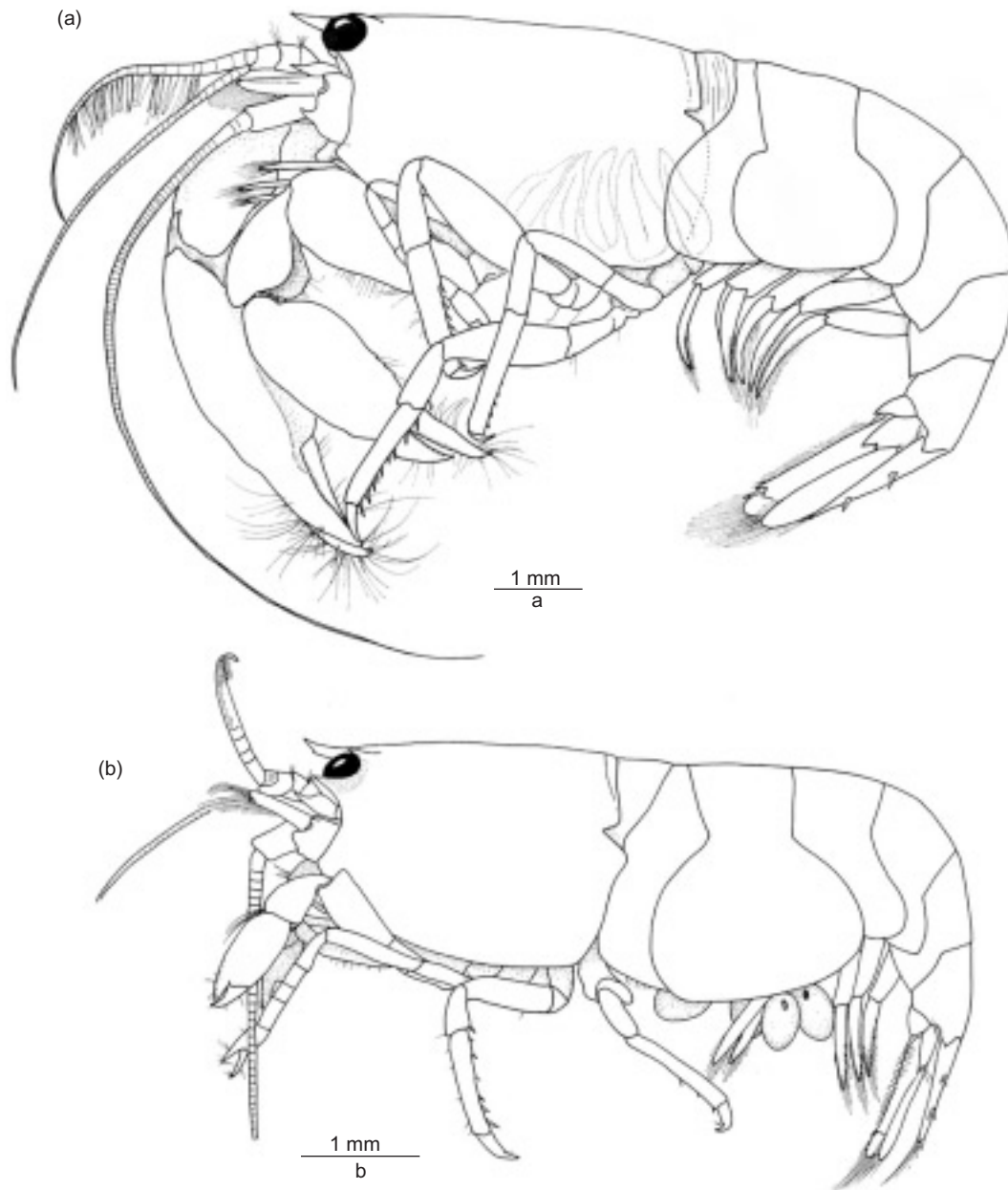
*Arete ghardaensis* Ramadan 1936: 15, pl. 1, figs. 2-8.

*Athanas ghardaensis* Banner and Banner 1981: 42; Banner and Banner 1983: 73.

*Athanas polynesia* Banner and Banner 1966a: 152, fig. 7;

Banner and Banner 1982: 302, fig. 93; Banner and Banner 1983: 73.

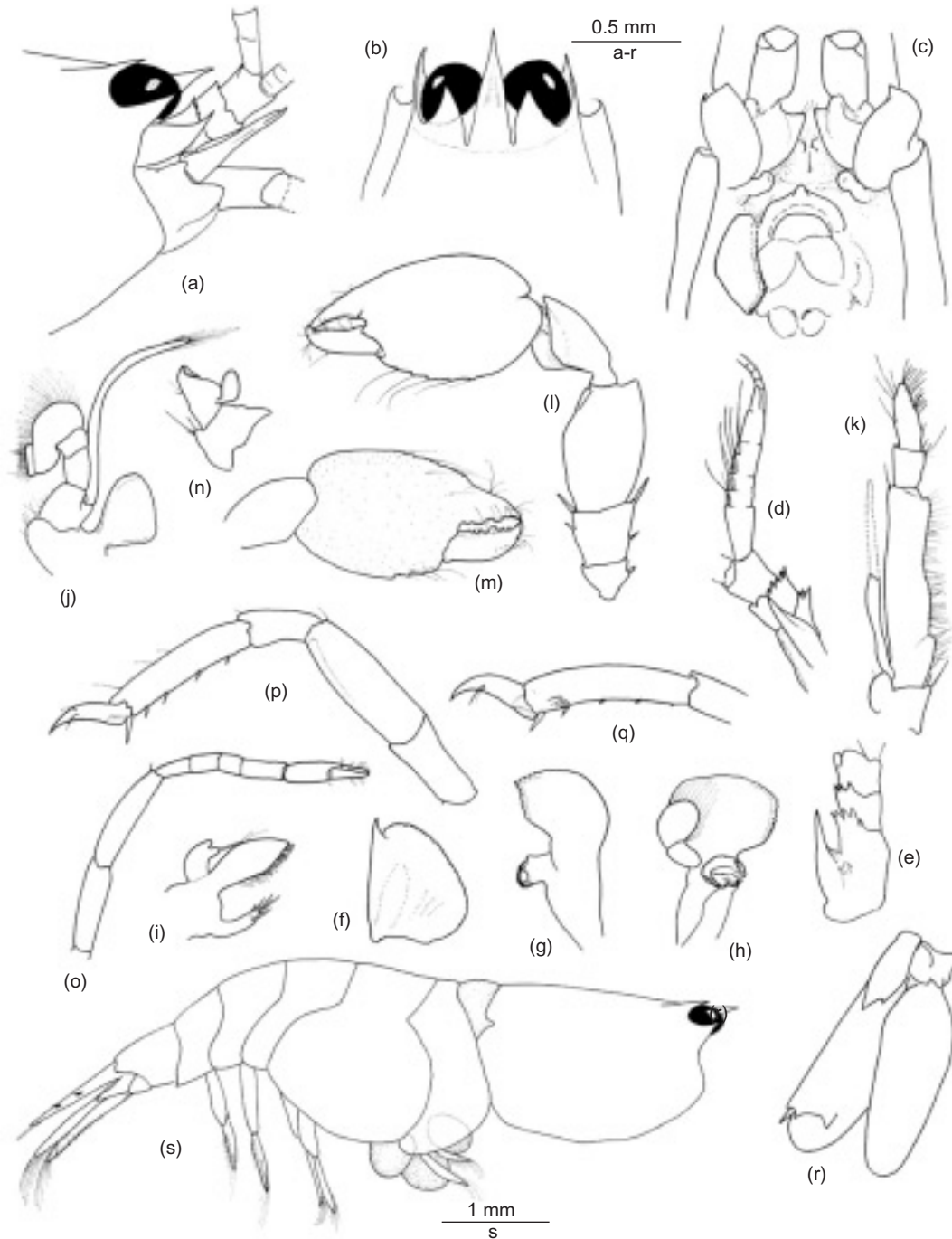
**Material examined:** CBM-ZC 8469, 1 male (CL 2.6, TL 8.3), Japan, S Ryukyu Arch., Yaeyama Group, Kuro-shima, Nakamoto, dead coral crevices, intertidal, coll. K. Nomura, 24 Sep. 1987 [YMP-672c]; MNHN-Na 15778, 2 ovigerous females (CL 2.5, TL 8.5; CL 2.7, TL 8.5), Japan, S Ryukyu Arch., Yaeyama Group, Kuro-shima, Iko, dead coral crevices, depth 2 m, coll. K. Nomura,



**Fig. 1.** *Rugathanas borradailei* (Coutière, 1903) comb. nov.: (a) male from Kenting, southern Taiwan (ASM); (b) ovigerous female from the Ryukyu Is., Japan (MNHN).

29 Aug. 1986 [YMP-163]; MNHN-Na 15779, 1 ovigerous female (CL 2.8, TL 8.1) Japan, S Ryukyu Arch., Yaeyama Group, Kuro-shima,

Urabishi, dead coral crevices, depth 3 m, coll. K. Nomura, 17 Jul. 1999 [YMP-2395]; ASIZ 72761, 1 male (CL 5.3, TL 15.3), 1 female (CL, TL not mea-



**Fig. 2.** *Rugathanas borradalei* (Coutière, 1903) comb. nov., ovigerous female (a-k, o-s) and male (l-n) from southwestern Madagascar (MNHN): (a) frontal region, lateral view; (b) frontal margin of carapace, dorsal view; (c) frontal region, ventral view showing bases of antennules and antennae, labrum, and position of mouthparts; (d) antennule, lateral view; (e) same, peduncle, dorsal view; (f) scaphocerite; (g, h) mandible from 2 different aspects; (i) maxillule; (j) 2nd maxilliped; (k) 3rd maxilliped; (l) left cheliped, lateral view; (m) same, chela, mesial view; (n) same, coxa and basis with exopod; (o) 2nd pereiopod; (p) 3rd pereiopod; (q) 5th pereiopod, distal carpus, propodus, and dactylus; (r) uropod; (s) abdomen and cephalothorax (frontal appendages and pereiopods not drawn).

sured), S Taiwan, Kenting National Park, coll. M.S. Jeng; MNHN-Na 4604, 1 male (CL 2.7, TL 8.8), La Réunion, reef crevices, coll. M. Peyrot-Clausade; MNHN-Na 4610, 1 ovigerous female (CL 2.8, TL 8.8), Toliara (Tuléar), Madagascar, from reef crevices, coll. M. Peyrot-Clausade.

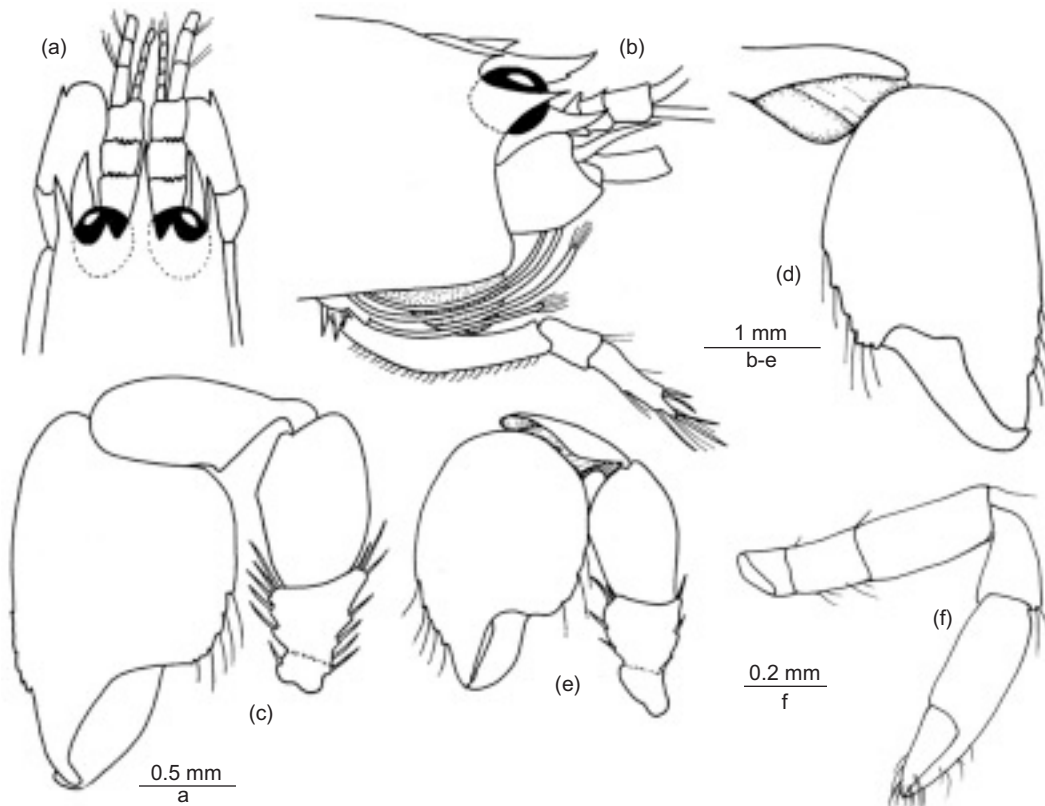
**Diagnosis:** Male chelipeds enlarged, varying from subequal and subsymmetrical in immature individuals to unequal and asymmetrical in adults; ischium with spines; palm expanded, ventral margin rugose, without papillae; fingers unarmed or with small teeth. Female chelipeds feebly enlarged, equal, symmetrical; ischium usually without spines, palm not expanded. Second pereopod with 4-segmented carpus. Strap-like epipods (mastigobranchs) absent. For complete description see Banner and Banner (1982 1983).

**Size:** Small-sized shrimp; largest specimen examined, a male from Taiwan (Fig. 1a), measured 15.3 mm TL; the average TL of Australian specimens (reported as *Ath. polynesia*) being 8 mm (Banner and Banner 1982).

**Colour:** Semitransparent with greenish or olive tinge and feebly marked yellowish-orange bands on abdomen tail fan and chelae; pale-brown inner organs visible due to transparency; eggs green (Fig. 6a).

**Habitat:** Crevice-dweller on coral reefs. Most specimens from the western Indian Ocean were found in cavities of coral rocks overgrown with coralline algae, in groove and spur system on the outer reef edge to 25 m deep; in sections of reef flat and a pinnacle on the inner slope; in dead and overgrown coral heads, as well as among branches of living corals, e.g., *Acropora variabilis* (Klunzinger, 1879) and *Stylophora mordax* (Dana, 1846) (Banner and Banner 1983). Jacquotte (1964) found several specimens in boring holes of the sea urchin *Stomopneustes variolaris* (Lamarck, 1816). The Australian specimens (reported as *Ath. polynesia*) inhabited areas covered with encrusting coralline algae in 2-7 m (Banner and Banner 1982).

**Distribution:** Maldives: Hulule Malé Atoll (type



**Fig. 3.** *Rugathanas borradailei* (Coutière, 1903) comb. nov., male from Samoa reported as *Athanas polynesia* Banner and Banner, 1966 (a-e), and female from Kenting, southern Taiwan (ASIZ) (f): (a) frontal region; (b) frontal region with protruding labrum and 3rd maxilliped, lateral view; (c) major cheliped, lateral view; (d) same, carpus and chela, mesial view; (e) minor cheliped, mesial view (a-e, adapted from Banner and Banner 1966a).

locality of *R. borradailei*) (Coutière 1903 1905); Egypt: Hurghada (type locality of *Are. ghardaensis*) (Ramadan 1936); Gulf of Aqaba (Banner and Banner 1981); Somalia; La Réunion; Mauritius (Banner and Banner 1983); Madagascar (Jacquotte 1964, Banner and Banner 1983); Philippines: Negros I. (Chace 1988); Australia: Lizard I. off Queensland (type locality of *Ath. polynesia*) (Banner and Banner 1982); Samoa (Banner and Banner 1966a); southern Taiwan: Kenting; southern Japan: Ryukyu Is. (present study).

**Remarks:** The taxonomic statuses of *Are. ghardaensis* Ramadan, 1936 and *Ath. polynesia* Banner and Banner, 1966 were reviewed by Banner and Banner (1983), who placed both nominal species in synonymy with *Ath. borradailei* (now *R. borradailei*). Those authors concluded that the chelipeds of *R. borradailei* are variable and sexually dimorphic: slender, symmetrical, with a few or no spines on the ischium in females (Coutière 1905:

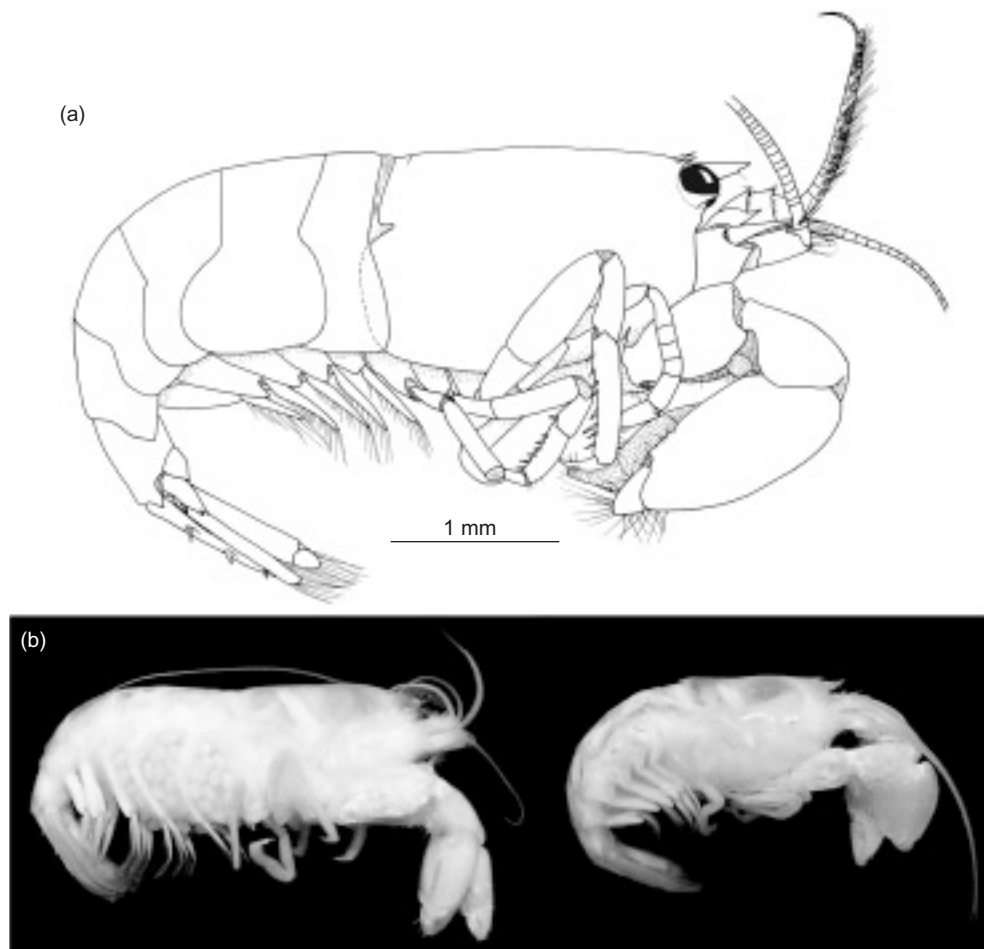
fig. 135c, Banner and Banner 1982: fig. 93k); and robust, subsymmetrical or asymmetrical, with usually strong spines on ischium in males (Banner and Banner 1966a: figs. 7e-g, 1982: figs. 93c-e). However, other features of *R. borradailei*, such as the development of the orbital teeth, the shape of the rostrum, and the armature of the antennal basicerite, are also variable (Ramadan 1936, Banner and Banner 1983). Therefore, *R. borradailei* cannot be excluded from either being a variable species or a species complex.

***Rugathanas verrucosus* (Banner and Banner, 1960) comb. nov.**

(Figs. 4, 5, 6b)

*Athanas verrucosus* Banner and Banner 1960: 147, fig. 4; Banner and Banner 1968: 270; Banner and Banner 1983: 75.

**Material examined:** NTM Cr001663, 2 males



**Fig. 4.** *Rugathanas verrucosus* (Banner and Banner, 1960) comb. nov.: (a) male from Kenting, southern Taiwan (ASIZ); (b) ovigerous female (left) and male (right) from Norfolk I. (NTM) showing sexual dimorphism in the development of the chelipeds.



(CL 4.5, TL 12.7; CL 2.7, TL 7.4), 1 ovigerous female (CL 5.4, TL 15.0), Point Hunter, Emily Bay, Norfolk I., off New South Wales, Australia, 29°03.8'S 167°57.3'E, depth 0-0.25 m, Sta. HL 84-21, coll. H. Larson, det. A.J. Bruce, 18 Apr. 1984; NTM Cr001663, 2 males (CL 2.3, TL 7.2; CL 4.2, TL 11.8), 4 ovigerous females (smallest, CL 3.8, TL 10.1; largest, CL 4.6, TL 12.3), Point Hunter, Emily Bay, Norfolk I., off New South Wales, Australia, 29°03.8'S 167°57.3'E, depth 0-0.25 m, Sta. HL 84-20, coll. H. Larson, det. A.J. Bruce, 17 Apr. 2004; ASIZ 73699, 1 male (CL 3.4, TL 10.1), S Taiwan, Kenting National Park, from coral rocks, depth 0.5-2 m, coll. A. Anker, 1 Oct. 2004.

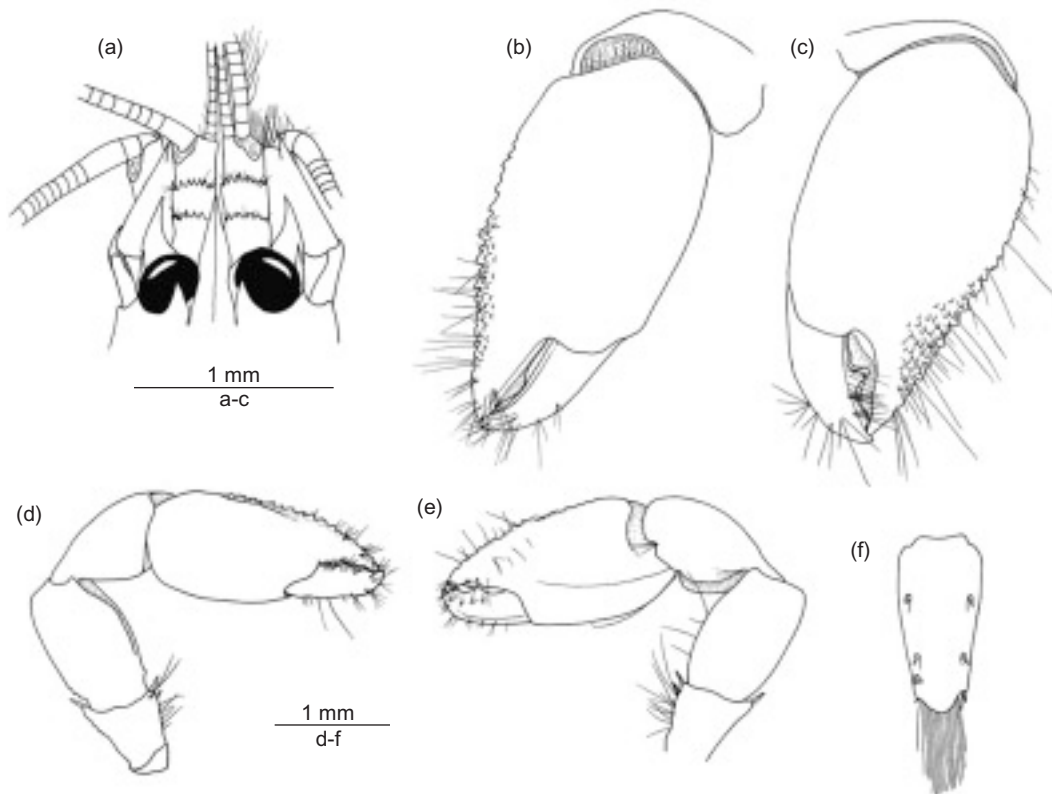
**Diagnosis:** Male chelipeds subequal, subsymmetrical, ischium with spines; palm expanded, ventral margin rugose, distoventral portion of palm, pollex, and proximal portion of dactylus with papillae (i.e., small subacute or rounded tubercles); fingers armed with teeth. Female chelipeds enlarged, slightly less stout than male chelipeds, equal, symmetrical; ischium with spines; palm less expanded than in male, with papillae. Second pereiopod with 5-segmented carpus. Strap-like

epipods (mastigobranchs) present on 3rd maxilliped and 1st and 2nd pereiopods. For complete description see Banner and Banner (1960).

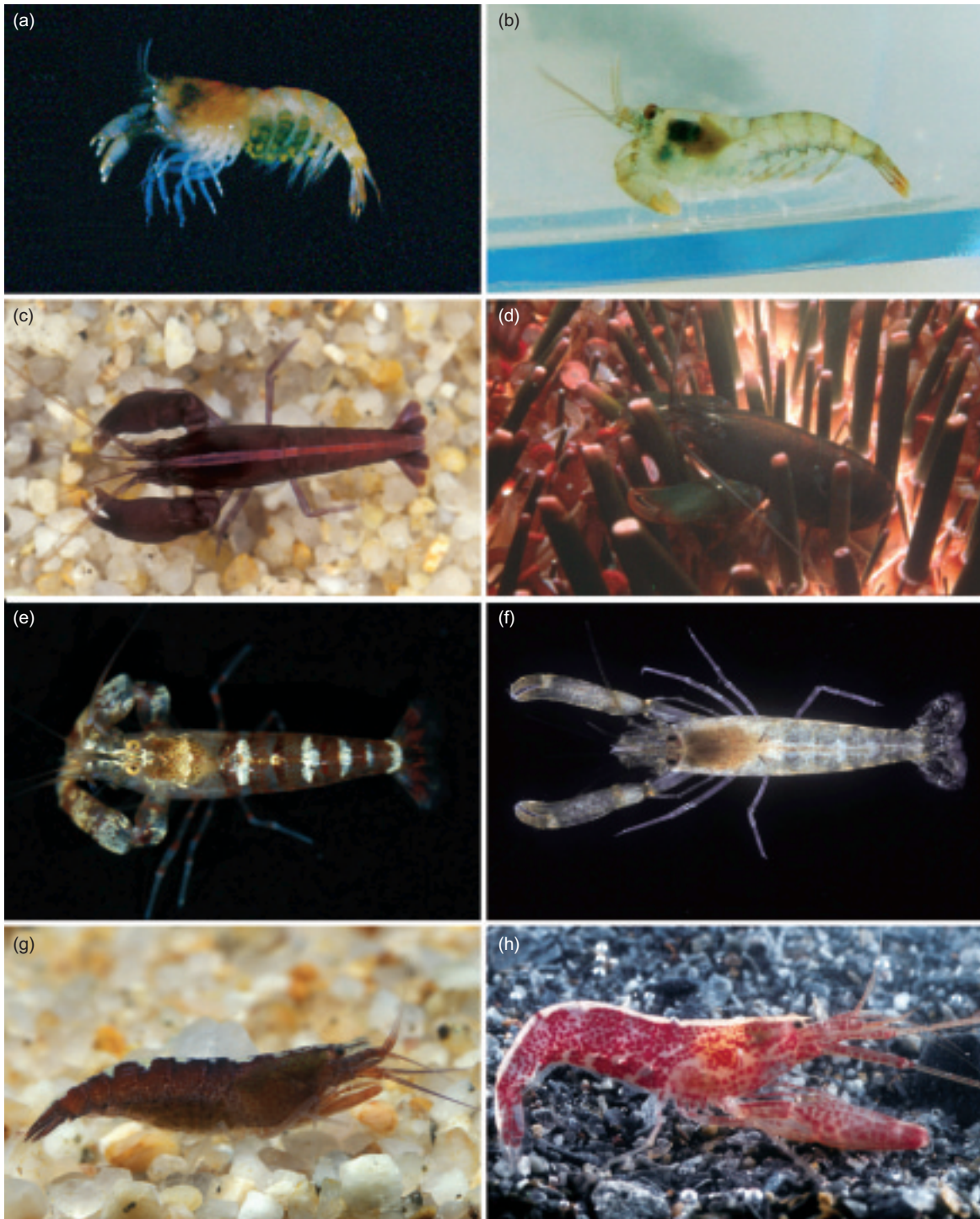
**Size:** Small-sized shrimp; type specimen measuring 3.9 mm CL and 11 mm TL (Banner and Banner 1960); the Kenting male specimen only slightly smaller, at 3.4 mm CL and 10.1 mm TL; the largest examined specimen, an ovigerous female from Norfolk I., at CL 5.4 mm and TL 15.0 mm.

**Colour:** Semitransparent, with purple-greenish bands on abdomen; fingers of chela with golden-yellow tinge; setae fringing uropods and telson golden-brown (Fig. 6b).

**Habitat:** In Enewetak, the habitat of *R. verrucosus* was described as "coralline ridge, ocean (windward) reef" and "coralline ridge, and ends of surge channels, exposed about 0.3 meters above 0.0 tides; ridge dense and hard, very irregular and without the usual smooth algal surface ... from superficial burrows, roofed over by calcareous algal sheets" (Banner and Banner 1960 1968). The single Kenting specimen was found in a crevice during process of breaking apart coral rocks and rubble collected in shallow water (0.5-2



**Fig. 5.** *Rugathanas verrucosus* (Banner and Banner, 1960) comb. nov., male from Kenting, southern Taiwan (ASIZ) (a-c); ovigerous female from Norfolk I. (NTM) (d-f): (a) frontal region; (b) male minor chela, lateral view; (c) male major chela, lateral view; (d) female cheliped, lateral view; (e) same, mesial view; (f) abnormal telson.



**Fig. 6.** Habitus of some species of *Rugathanas* gen. nov. (a, b), *Arete* Stimpson, 1860 (c, d), and *Athanas* Leach, 1814 (e-h): (a) *Rugathanas borradailei* (Coutière, 1903) comb. nov., ovigerous female from Kenting, southern Taiwan; (b) *Rugathanas verrucosus* (Banner and Banner, 1960) comb. nov., male from Kenting, southern Taiwan; (c) *Arete* cf. *dorsalis* Stimpson, 1860, specimen from southern Japan; (d) *Arete* cf. *dorsalis*, shrimp *in situ* among spines of a sea urchin, Lord Howe I., off eastern Australia; (e) *Athanas areteformis* Coutière, 1903 (*Ath. nitescens* group), male from southern Japan; (f) *Athanas nitescens* (Leach, 1814) (*Ath. nitescens* group), male from Banyuls-sur-Mer, Mediterranean coast of France; (g) *Athanas japonicus* Kubo, 1936 (*Ath. dimorphus* group), ovigerous female from southern Japan; (h) *Athanas amazone* Holthuis, 1951 (*Ath. dimorphus* group), male from Banyuls-sur-Mer, Mediterranean coast of France (photograph credits: a, M.S. Jeng; b, A. Anker, c, e, g, M. Itoh; d, N. Coleman; f, h, P. Lecomte leg. P. Noël).

m) on a near-shore, exposed reef. The Norfolk I. specimens were collected on a rocky reef, at depths reaching from low tide mark to 0.25 m.

**Distribution:** Marshall Is.: Enewetak Atoll (type locality, Banner and Banner 1960 1968); Australia: Norfolk I.; southern Taiwan: Kenting (present study).

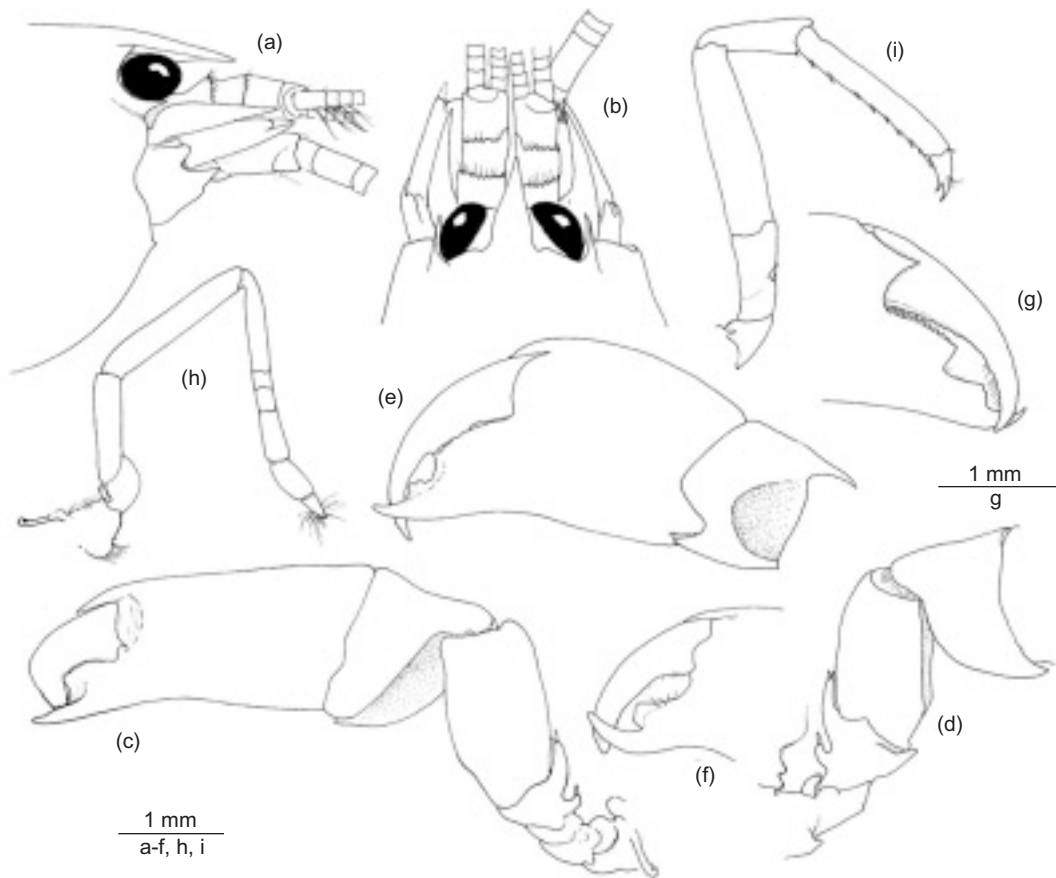
**Remarks:** In *R. verrucosus*, the male chelipeds can be classified as subsymmetrical (Figs. 5b, c), and the female chelipeds are generally only slightly weaker than the male chelipeds (Figs. 3, 5d, e, see also Figs. 3). In contrast to this, in *R. borradallei*, the heterochelate condition (asymmetry) in males (Fig. 3c, e) and the sexual dimorphism (chelipeds significantly larger in males, see Figs. 1a, b, 3c-f) appear to be more pronounced. Ovigerous females of *R. verrucosus* from Norfolk I. carried numerous (several dozen) relatively small-sized eggs. One of the ovigerous females from Norfolk I. had an aberrant number of spines on the telson: 4 dorsal spines + 1 posterolateral spine on

1 side, and 2 dorsal and 2 posterolateral spines (typical condition) on the other side (Fig. 5f).

### *Arete* Stimpson, 1860 *sensu stricto*

*Arete* Stimpson 1860: 32.

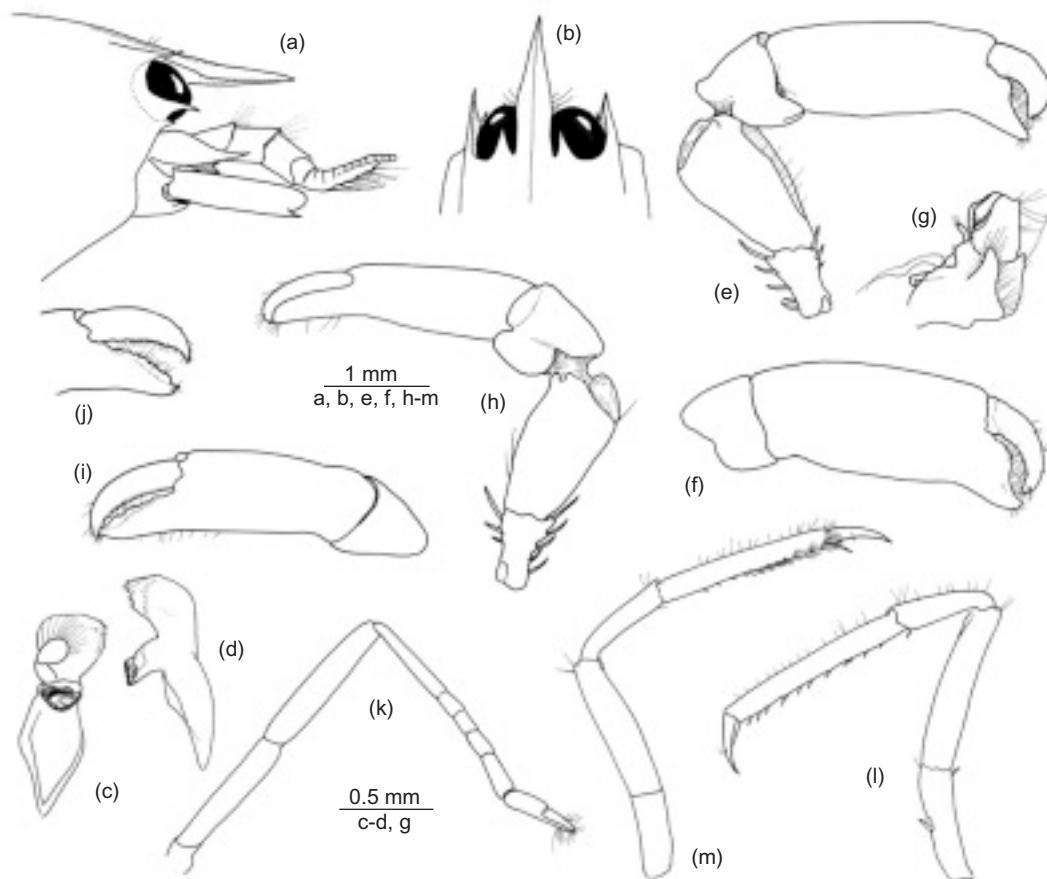
**Diagnosis:** Body relatively stout. Carapace smooth, not setose. Frontal margin with long, straight rostrum, bearing acute tip, without subdistal tooth on ventral margin. Extra-corneal teeth acute, not protruding beyond anterior margin of eye; supra-corneal teeth absent or feebly developed; infra-corneal teeth absent. Orbital hoods absent; eyes exposed in dorsal and lateral views. Pterygostomial margin usually rounded or angular, sometimes subacute. Cardiac notch well-developed. Sixth abdominal segment with articulated plate at posteroventral angle; preanal plate acutely produced. Antennules with finely serrated distal margin of 1st segment; ventromesial carina of 1st segment with strong tooth; lateral flagellum with



**Fig. 7.** *Arete* cf. *indicus* Coutière, 1903, 2 males from Sesoko Beach, Okinawa (ZRC) (a-f, h, i) and male from Sri Lanka (NHMW) (g): (a) frontal region, lateral view; (b) same, dorsal view; (c) left cheliped, lateral view; (d) same, coxa to carpus, mesial view; (e) same, chela and carpus, lateral view; (f) fingers of chela of a different specimen, lateral view; (g) chela fingers of a larger specimen, mesial view; (h) 2nd pereiopod; (i) 3rd pereiopod.

well-developed secondary ramus. Antenna with normal, not particularly stout basicerite, distolateral tooth always present; scaphocerite broadly oval or rounded. Mandible with palp, incisor process slightly expanded, distally with no more than 12 small teeth. Maxillule with bilobed palp, both ventral and dorsal lobes with setae. Labrum not swollen or protruding. Third maxilliped with distally projecting dorsal margin of antepenultimate segment; penultimate segment rectangular, about as long as or slightly longer than wide; ultimate segment with short spines on tip. First pereopods (chelipeds) feebly sexually dimorphic, equal or subequal, usually subsymmetrical, sometimes asymmetrical (major cheliped situated on either side), stout, carried extended with dactylus in lateral or ventrolateral position; coxa unarmed mesially; ischium usually with strong tooth mesially and with lobes or teeth furnished with spines on dorsal margin; basis with rudimentary exopod; merus robust,

flattened ventrally; carpus swollen, cup-shaped, embracing proximal portion of palm distally, ventral side somewhat flattened, not deeply excavated; chela smooth, without sculpturing, compressed; palm sometimes with acute distal projection on mesial side proximal to articulation with dactylus, without or with feebly marked linea impressa; fingers armed with teeth, sometimes interrupted by large hiatus, without cavity-tooth system. Carpus of 2nd pereopod bearing 4 segments. Third pereopod with ischium unarmed or bearing 1 spine on ventrolateral margin; merus without spines, sometimes with distoventral margin ending in angular or acute projection; carpus unarmed; propodus armed with spines; dactylus stout, biunguiculate. Fifth pereopod with poorly developed propodal brush (at most 3 rows of setae). Second pleopod with appendix interna and appendix masculina in males and sometimes in females. Telson with 2 pairs of dorsal spines and 2 pairs of pos-



**Fig. 8.** *Athanas areteformis* Coutière, 1903, male from Papua New Guinea (MNHN): (a) frontal region, lateral view; (b) frontal margin of carapace, dorsal view; (c, d) mandible from 2 different aspects; (e) left (major) cheliped, mesial view; (f) same, chela and carpus, mesial view; (g) same, coxa and basis with exopod; (h) right (minor) cheliped, mesial view; (i) same, chela and carpus, mesial view; (j) same, chela fingers, lateral view; (k) 2nd pereopod; (l) 3rd pereopod; (m) 5th pereopod.

terolateral spines; anal tubercles lacking. Gill/exopod formula summarized in following table.

	Mxp1	Mxp2	Mxp3	P1	P2	P3	P4	P5
Pl	-	-	-	+	+	+	+	+
Ar	-	-	-	-	-	-	-	-
Pd	-	-	-	-	-	-	-	-
Ma	-	-	+	+	+	-	-	-
Se	-	-	-	+	+	+	-	-
Ex	+	+	+	r	r	-	-	-

*Type species: Arete dorsalis* Stimpson 1860: 32; type locality: Hong Kong. Synonyms: *Athanas mascarenicus* Richters 1880: 164; *Arete dorsalis pacificus* Coutière 1903: 84; *Arete maruteensis* Coutière 1905: 866; *Arete maruteensis salibabuensis* de Man 1910: 313; ? *Arete kominatoensis* - Suzuki 1970: 2 (not Kubo 1942).

*Other species included:* Three described and at least 2 undescribed species (K. Nomura, pers. obs.; A. Anker pers. obs.).

*Arete acanthocarpus* (Miya and Miyake 1968) [*Athanas acanthocarpus* Miya and Miyake 1968: 157]; type locality: Okinawa, Japan.

*Arete amboinensis* de Man 1910: 25; type locality: Ambon, Indonesia. Specific status needs confirmation.

*Arete indicus* Coutière 1903: 84; type locality: not designated, type specimens from Djibouti and Hulule Male Atoll, Maldives. Synonyms: *Arete iphianassa* de Man 1910: 312; *Arete intermedius* Yu 1931: 513; ? *Athanas kominatoensis* Kubo

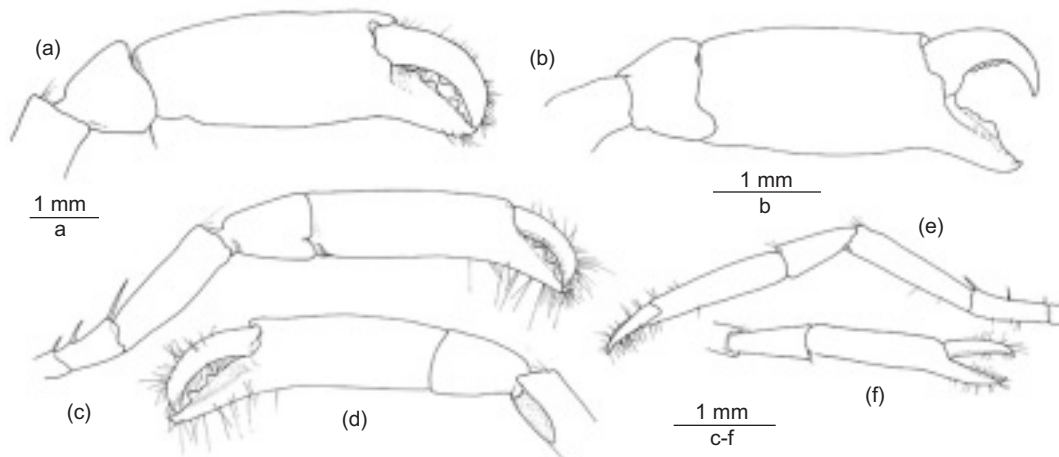
1942: 82 (for synonymy see Banner and Banner 1960 1973, Miya and Miyake 1968).

*Arete* sp. nov. 1 - *Athanas indicus* - Suzuki 1970: 5 (not Coutière 1903).

*Arete* sp. nov. 2 - *Athanas dorsalis* - Suzuki 1970: 12 (not Stimpson 1860).

*Distribution:* Indo-West Pacific: Red Sea, Djibouti, Madagascar, La Réunion, Maldives, Seychelles, Sri Lanka, Japan (including Ryukyu Is.), China, Taiwan, Philippines, Indonesia, Australia (including Lord Howe I.), Micronesia, Melanesia, French Polynesia.

*Remarks:* *Arete*, as redefined here, may be easily separated from *Rugathanas* by numerous morphological features (see above), and from *Athanas* by the stouter chelipeds (Fig. 7c, e) with large, oval-shaped chelae (vs. slenderer in *Athanas*, Figs. 8e, h, 9); the ischium of the chelipeds bearing a strong mesial process (Fig. 7d) (unarmed in *Athanas*); the carpus of the 2nd pereopods bearing 4 segments (Fig. 7h) (vs. 5 in *Athanas*, Fig. 8k); the distoventral margin of the merus of the 3rd pereopod being angular or subacute (Fig. 7i) (vs. rounded in *Athanas*, Fig. 8l); the dactylus of the 3rd to 5th pereopods stout (Fig. 7i) (vs. usually slender in *Athanas*, Fig. 8l); the strap-like epipods or mastigobranchs present on 1st and 2nd pereopods (vs. on 1st to 3rd or 4th pereopods in *Athanas*); and the preanal plate of the 6th abdominal somite being acutely produced towards the telson (vs. rounded, not produced in *Athanas*). Furthermore, the antepenultimate seg-



**Fig. 9.** Chelipeds of 3 species from the *Athanas nitescens* group: (a) *Athanas grimaldii* Coutière, 1911, male from Senegal (MNHN), major cheliped, carpus, and chela, mesial view; (b) *Athanas granti* Coutière, 1908 from southern Australia, type (MNHN), major cheliped, carpus, and chela, mesial view; (c-f) *Athanas* cf. *nitescens* (Leach, 1814) from Senegal (MNHN), (c) male cheliped, lateral view; (d) same, chela and carpus, mesial view; (e) female cheliped, lateral view; (f) same, chela and carpus.

ment of the 3rd maxilliped usually projects distodorsally in *Arete* (see Bruce 1990a), but not in *Rugathanas* or *Athanas*. The propodal brush on the 5th pereopod is poorly developed in both *Arete* (cf. Bruce, 1990a) and *Rugathanas* (Fig. 2q), but is well-developed in *Athanas* (Fig. 8m).

In *Arete*, both males and females bear enlarged, stout chelipeds, with broadened chelae that are carried extended forward, with the dactylus situated in lateral or ventrolateral position (Fig. 6c, d). The chelipeds of *Athanas* are highly variable in shape (cf. Figs. 6e-h), and may be carried either extended (*Ath. nitescens* (Leach, 1814) species group, cf. Figs. 6e, f), or folded (*Ath. dimorphus* Ortmann, 1894 species group, cf. Figs. 6g, h). The *Ath. nitescens* group may have some affinities with *Arete*, but in none of the species of this group, the chelae are as broad as in *Arete* (compare Figs. 6c, d, 7c-g and Figs. 6e, f, 8e-h, 9), which actually look like “mini-lobsters” (Figs. 6c, d).

All *Arete* species are characterized by a 4-segmented carpus in the 2nd pereopod and the presence of strap-like epipods on the 1st and 2nd pereopods. In the vast majority of *Athanas* spp., the carpus of the 2nd pereopod is composed of 5 segments (A. Anker pers. obs.). Kemp's (1915) reported specimens of *Ath. polymorphus* Kemp, 1915 from Chilka Lake (India) that had either 4 or 5 segments, but in 7 examined specimens of *Ath. polymorphus* from Singapore, the carpus had 5 segments (Anker 2003). In *Ath. squillophilus* Hayashi, 2002, the number of carpal segments varies from 5 to 6 (Hayashi 2002). One of us (AA) also examined a specimen of *Ath. dimorphus* with 6 instead of the typical 5 carpal segments. In most species of *Athanas*, the strap-like epipods are present on the 1st-3rd pereopods, although *Ath. ohsimai* Yokoya, 1936 appears to have a complete epipod set, i.e., in this species, the strap-like epipods are present on the 1st-4th pereopods (Yokoya 1936). Banner and Banner (1960) reported an infraspecific variation in the number of pereopodal epipods in a population of *Ath. djiboutensis* Coutière, 1897, with most specimens having epipods on the 1st and 2nd pereopods, and only some on the 1st-3rd pereopods.

Despite all the aforementioned exceptions, the combination of the cheliped features (e.g., chelae broad, oval-shaped in *Arete*, more or less elongated in *Athanas*); the number of carpal segments in the 2nd pereopod (4 in *Arete*, 5 in *Athanas*, exceptionally 4 or 6); and the number of pereopodal epipods (on P1 and P2 in *Arete*, on

P1-3 in *Athanas*, exceptionally on P1 and P2 or P1-4) enables *Arete* to be distinguished from *Athanas*.

*Arete* is also ecologically distinct from *Rugathanas* and *Athanas*. All *Arete* species are obligate symbionts of sea urchins (Fig. 6d), mostly species of *Echinometra*, *Anthocidaris*, *Heterocentrotus*, *Heliocidaris*, *Echinothrix*, *Tripneustes*, and *Centrostephanus* (Suzuki 1970, Banner and Banner 1973), and at least 2 species exhibit protandric hermaphroditism (Suzuki 1970, Gherardi and Calloni 1993), which explains the presence of an appendix masculina in some ovigerous specimens. Within *Athanas*, only *Ath. granti* Coutière, 1908 occasionally associates with sea urchins of the genus *Centrostephanus* (Banner and Banner 1973). Remarkably, this species shows some resemblance to *Arete*, but differs in many other respects and clearly belongs to *Athanas* (see below). Protandric hermaphroditism has yet to be documented in *Athanas*, although it is suspected in *Ath. ornithorhynchus* Banner and Banner, 1973, a remarkable species associated with brittle stars (Marin et al. 2005).

As already mentioned, *Arete* requires revision at the species level. The taxonomic status of de Man's “*Arete maruteensis salibabuensis*” placed in synonymy of *Are. dorsalis*, as well as the taxonomic statuses of *Are. iphianassa*, *Are. intermedius*, and *Are. kominatoensis* (originally described as *Ath. kominatoensis*), placed in synonymy with *Are. indicus* (Banner and Banner 1973), should be reconsidered. All these forms should be contrasted to 2 species misidentified as *Are. indicus* and *Are. dorsalis* by Suzuki (1970), and which probably represent undescribed species (K. Nomura, pers. comm.). Therefore, many of the previous identifications of *Arete* species (e.g., Banner and Banner 1960 1973, Miya and Miyake 1968, Suzuki 1970, Bruce 1989 1990a), including Bruce's (1990a) redescription of *Are. dorsalis*, are questionable. As such a key to the genus *Arete* is considered premature.

#### ***Athanas* Leach, 1814 *sensu stricto***

*Athanas* Leach 1814: 401.

*Diagnosis*: Body usually slender. Carapace usually smooth, sometimes setose. Frontal margin with long, straight, slightly ascendant, or descendant rostrum, with acute tip, without subdistal tooth on ventral margin, rarely with teeth on dorsal margin. Extra-corneal teeth present, acute, sometimes protruding beyond anterior margin of eye;

supra- and infra-corneal teeth absent or present. Orbital hoods absent; eyes exposed in dorsal and lateral views. Pterygostomial margin usually rounded, rarely sharply protruding or with small acute tooth. Cardiac notch well-developed. Sixth abdominal segment with articulated plate at posteroventral angle; preanal plate rounded. Antennules with straight, not serrated distal margin of 1st segment; ventromesial carina of 1st segment with strong tooth; lateral flagellum with well-developed secondary ramus. Antenna with normal, not particularly stout basicerite, distolateral tooth present; scaphocerite variably oval to subrectangular, usually more or less elongate. Mandible with palp, incisor process usually not expanded, distally with 5-8 medium-sized teeth, rarely expands, with 12-15 min teeth. Maxillule with bilobed palp, both ventral and dorsal lobes with setae. Labrum not swollen or protruding. Third maxilliped without distal tooth on dorsal margin of antepenultimate segment; penultimate segment elongate, distinctly longer than wide; ultimate segment often with spines on tip. First pereopods (chelipeds) highly variable in shape, size, and degree of asymmetry, often sexually dimorphic or polymorphic, carried folded or extended with dactylus in lateral position; coxa usually with apressed subtriangular tooth mesially; basis with rudimentary exopod; ischium unarmed mesially, often with spines on dorsal and ventral margins; chelae without linea impressa on palm and without fossa-plunger on fingers. Male chelipeds usually enlarged and/or elongate, equal, subequal, or unequal, symmetrical, subsymmetrical, or asymmetrical (with major cheliped situated either on left or right side); ischium sometimes with lobes furnished with spines on dorsal margin; merus usually stout, depressed or excavated ventrally; carpus elongate or cup-shaped, sometimes flattened ventrally; chela highly variable, usually conspicuously swollen or elongate, sometimes with tubercles along ventral margin; fingers usually armed with teeth. Female chelipeds variable from slender, slightly elongate, to greatly enlarged, equal, subequal, or unequal, symmetrical, subsymmetrical, or asymmetrical (with major cheliped situated on left or right side); merus variable, slender to stout, flattened or excavated ventrally; carpus elongate or cup-shaped, sometimes flattened ventrally; chelae variable from slender to oval or elongate, sometimes with tubercles along ventral margin; fingers unarmed or armed with teeth. Carpus of 2nd pereopod with 5 segments, exceptionally 4 or 6. Third pereopod with ischium unarmed or bearing 1

spine on ventrolateral margin; merus unarmed, distoventral margin never acute or angular; carpus unarmed; propodus usually with ventral spines, rarely with spine-like setae; dactylus more or less slender, simple or biunguiculate. Fifth pereopod with well-developed propodal brush. Second pleopod with appendix interna and appendix masculina in males, appendix interna in females, exceptionally with appendix masculina in ovigerous specimens. Telson with 2 pairs of dorsal spines and 2 pairs of posterolateral spines; anal tubercles absent. Gill formula with somewhat variable number of epipods, as summarized in following table (untypical condition indicated in parentheses).

	Mxp1	Mxp2	Mxp3	P1	P2	P3	P4	P5
Pl	-	-	-	+	+	+	+	+
Ar	-	-	-	-	-	-	-	-
Pd	-	-	-	-	-	-	-	-
Ma	-	-	+	+	+	+(-)	-(+)	-
Se	-	-	-	+	+	+	+(-)	-(+)
Ex	+	+	+	r	r	-	-	-

*Type species: Athanas nitescens* Leach, 1814 [*Palaemon nitescens* Leach 1814: 401]; type locality: England. Most important synonyms: *Palaemon laevirhincus* Risso 1816: 108; *Athanas* var. *laevirhincus* (Risso, 1816), Holthuis and Gottlieb 1958: 32; *Arete dioeletiana* Heller 1862: 404; *Athanas transitans* Czerniawsky 1884: 25; *Athanas nitescens* var. *suchumicae* Czerniawsky 1884: 24; *Athanas nitescens* forma *rotundicauda* Czerniawsky 1884: 24; *Athanas transitans* var. *longispina* Czerniawsky 1884: 25; *Athanas transitans* var. *pontica* Czerniawsky 1884: 26; *Athanas veloculus* Bate 1888: 529. The taxonomic statuses of *Ath. laevirhincus* and *Ath. veloculus* requires confirmation (see below).

*Other species included: Athanas* includes all the remaining species described mostly under the generic name *Athanas*.

*Athanas amazone* Holthuis 1951: 111; type locality: Nigeria.

*Athanas anadactylus* Anker and Marin 2007: 163; type locality: Vietnam.

*Athanas areteformis* Couitière 1903: 79; type locality: Hulule Male Atoll, Maldives. Synonyms: *Athanas naifaroensis* Couitière 1903: 77; *Athanas erythraeus* Ramadan 1936: 13; *Athanas dubius* Banner 1956: 322 (see Banner and Banner 1973). The taxonomic statuses of *Ath. naifaroensis*, *Ath. erythraeus* and *Ath. dubius* require confirmation.

*Athanas crosslandi* Tattersall 1921: 372; type

locality: Khor Dongonab, Sudanese Red Sea.

*Athanas dentirostris* Anker, Jeng and Chan 2001: 1049; type locality: Haiphong, Vietnam.

*Athanas dimorphus* Ortmann 1894: 12; type locality: Dar es Salaam, Tanzania. Synonyms: *Alpheus monoceros* (Heller 1862: 274, *nomen dubium*); *Athanas setoensis* Kubo 1951: 265; *Athanas dimorphus seedang* Banner and Banner 1966b: 28 (see Banner and Banner 1960 1973). The taxonomic statuses of *Ath. setoensis* and *Ath. dimorphus seedang* require confirmation.

*Athanas djiboutensis* Coutière 1897: 233; type locality: Djibouti. Synonym: *Athanas sulcatipes* Borradaile 1898: 1011 (see Banner and Banner 1960 1973).

*Athanas esakii* Kubo 1940: 93; type locality: “Kusaie”, possibly Kosrae, Caroline Is., Micronesia.

*Athanas gracilipes* Banner and Banner 1978: 234; type locality: South China Sea.

*Athanas gracilis* Boone 1935: 122; type locality: Raiatea, Society Is., French Polynesia.

*Athanas granti* Coutière 1908: 192; type locality: Adelaide, South Australia.

*Athanas grimaldii* Coutière 1911: 1; type locality: not designated, type specimens from Bay of Biscay, France and Cape Verde Is.

*Athanas haswelli* Coutière 1908: 192 (amended from the original spelling *Ath. hasswelli* by Banner and Banner 1973); type locality: Adelaide, South Australia.

*Athanas hongkongensis* Bruce 1990b: 624; type locality: Hong Kong, China.

*Athanas japonicus* Kubo 1936: 43; type locality: Yamaguchi, Japan. Synonyms: *Athanas lamellifer* Kubo 1940: 102 (see Miya and Miyake 1968). The taxonomic status of *Ath. lamellifer* needs clarification.

*Athanas jedanensis* de Man 1910: 313; type locality: Pulau Djedan, eastern Indonesia.

*Athanas locincertus* Banner and Banner 1973: 311; type locality: “Panchoran Buoy”, possibly Western Australia.

*Athanas marshallensis* Chace 1955: 17; type locality: Marshall Is.

*Athanas minikoensis* Coutière 1903: 76; type locality: Minikoy Atoll, Laccadives, India.

*Athanas naga* Banner and Banner 1966b: 26; type locality: Gulf of Thailand.

*Athanas nouvelae* Holthuis 1951: 104; type locality: Cape Verde Is.

*Athanas ohsimai* Yokoya 1936: 129; type locality: Sagami Bay, Japan.

*Athanas orientalis* Pearson 1905: 88; type

locality: Gulf of Manaar, Sri Lanka.

*Athanas ornithorhynchus* Banner and Banner 1973: 319; type locality: Northern Territory, Australia.

*Athanas parvus* de Man 1910: 315; type locality: Timor, Indonesia. Synonym: *Athanas sibogae* de Man 1910: 314 (see Banner and Banner 1973, Chace 1988).

*Athanas phyllocheles* Banner and Banner 1983: 152; type locality: off La Réunion, Indian Ocean.

*Athanas polymorphus* Kemp 1915: 295; type locality: Chilka Lake, eastern India.

*Athanas rathionastes* Banner and Banner 1960: 142; type locality: Canton, Phoenix Is., Kiribati.

*Athanas squillophilus* Hayashi 2002: 396; type locality: southern Hokkaido, Japan.

*Athanas stebbingi* de Man 1920: 106; type locality: Pulau Bawean, Indonesia.

*Athanas tenuipes* de Man 1910: 316; type locality: Sulawesi, Indonesia.

*Athanas* sp. nov. 1 aff. *dimorphus* (A. Anker pers. obs.), Pulau Bintan, Indonesia.

*Athanas* sp. nov. 2 aff. *parvus* (A. Anker pers. obs.), Vietnam.

*Athanas* sp. nov. 3 aff. *amazone* (Anker and Ah Yong in press), Ivory Coast.

*Athanas* sp. nov. 4 aff. *phyllocheles* (Anker and Ah Yong in press), New South Wales, Australia.

*Distribution:* Indo-West Pacific from the Red Sea to South Africa, Australia, French Polynesia, and Japan; eastern Atlantic from southern Norway and Ireland to southeastern Africa, including the Mediterranean and Black Seas (absent from central and western Atlantic and eastern and north-central Pacific).

*Remarks:* *Athanas*, as redefined here, differs from *Rugathanas* and *Arete* in several morphological features (see descriptions of *Rugathanas* and *Arete* above). The presence of a subtriangular projection on the mesial face of the cheliped coxa, a previously unconsidered feature, may turn out to be a further diagnostic feature of *Athanas*. This projection was present in all 12 personally examined species of *Athanas* (A. Anker pers. obs.), including *A. dimorphus*, *A. nitescens*, and *A. areteformis* (Fig. 8g), but is absent in all species of *Arete* and *Rugathanas*.

With over 30 species, *Athanas* remains a relatively heterogeneous genus. It was subdivided into 2 informal species groups by Coutière (1899), the *Ath. nitescens* group (chelipeds carried extend-



ed) and the *Ath. dimorphus* group (chelipeds carried folded). The *Ath. nitescens* group appears to be relatively homogenous, except for the somewhat aberrant *Ath. areteformis* and *Ath. granti*. However, these 2 species clearly belong to the *Ath. nitescens* group based on the features of the chelipeds (see below). The *Ath. dimorphus* group is much more heterogeneous and may be further subdivided into several smaller groups mainly defined by the features of the chelipeds, frontal margin, and walking legs (A. Anker pers. obs.). However, the complex intrageneric structure of *Athanas* is beyond the scope of this study and will be examined elsewhere.

The placement of *Ath. areteformis* within the *Ath. nitescens* group is based mainly on the features of the male chelipeds. The shape of the frontal margin of the carapace (Figs. 8a, b) and the expanded incisor process of the mandible (Figs. 8c, d) of this species are superficially similar to those of *Rugathanas*, but the chelipeds (Figs. 8e-j), in particular the stout major chela (Fig. 8f), greatly differ from the chelipeds of *Rugathanas*, and more closely resemble those of *Ath. grimaldii* (Fig. 9a) or *Are. indicus* (Fig. 7c). The specific name *Ath. areteformis* (resembling *Arete*) given by Coutière (1903) refers to the general resemblance of the chelipeds of this species to the chelipeds of *Arete*. Banner and Banner (1960) misinterpreted this as Coutière's doubts about the distinction between *Arete* and *Athanas*. Despite some similarities with *Rugathanas* and *Arete*, *Ath. areteformis* plainly belongs to the genus *Athanas*, as redefined above, because of the general shape of the chelipeds, the non-extensible dactylus of the 3rd-5th pereopods, the well-developed row of setae on the propodus of the 5th pereopod, as well as the presence of 3 strap-like epipods on the pereopods (P1-3), a typical condition in *Athanas*.

Another species that shows some morphological and ecological resemblance to *Arete* is *Ath. granti*. This species also has a robust major cheliped (Fig. 9b), stout biunguiculate dactylus on the 3rd-5th pereopods, and is furthermore, facultatively associated with the sea urchin *Centrostephanus rogersii* (Agassiz, 1863) (Banner and Banner 1973). However, the shape of the frontal margin; the marked asymmetry of the chelipeds (the minor cheliped being much slenderer, see Banner and Banner 1973); the 5-segmented carpus of the 2nd pereopod; the number of pereopodal epipods; and the absence of tooth on the mesial face on the cheliped ischium, all indicate that *Ath. granti* is a member of *Athanas*. Furthermore, in none of the

species of the *Ath. nitescens* group, including *Ath. nitescens* (Figs. 9c, d), *Ath. grimaldii* (Fig. 9a), *Ath. areteformis* (Fig. 8f), and *Ath. granti* (Fig. 9b), does the palm of the chela reach the same broadness as in *Arete* (Fig. 7). Banner and Banner (1973) reported the presence of a median flap on the 5th abdominal sternite in *Ath. granti* and *Are. sp. cf. dorsalis*. Interestingly, this flap was absent in the closely related *Are. sp. cf. indicus* (both *Are. dorsalis* and *Are. indicus* were probably misidentified by Banner and Banner (1973), see above). The function of this odd flap is unknown; it may have evolved independently in some *Arete* species and in *Ath. granti*, and perhaps plays a role in the symbiosis with the sea urchins. On the other hand, it is also possible that the *Arete* clade evolved from ancestors within *Athanas*, in which case the latter genus would be paraphyletic and require further splitting. The morphological complexity of *Athanas* and the absence of a phylogeny of the *Athanas* complex (based on molecular and/or morphological characters) make further conclusions impossible.

**Acknowledgments:** The 1st author (AA) is indebted to Dr. A. Richard Palmer (University of Alberta, Edmonton, Canada) for his support in form of an NSERC operating grant (A7245). Mr. Gavin Dally (Museum and Art Gallery of the Northern Territory, Darwin, NT, Australia) arranged the loan of the NTM specimens. Mr. Keiichi Nomura (Kushimoto Marine Park Center, Japan) sent us additional specimens from Japan. Dr. Hung-Chang Liu (Department of Ecology, Providence University, Shalu, Taiwan), Dr. Masako Mitsuhashi (Osaka Institute of Technology, Osaka, Japan), and Mr. Chia-Wei Lin (National Taiwan Ocean University, Keelung, Taiwan) helped collect alpheid specimens in Kenting. Madoka Itoh (Japan), Pierre Noël (MNHN, Paris, France), and Neville Coleman (Australia) provided colour photographs. Dr. Sammy De Grave (Oxford University Museum of Natural History, Oxford, UK), made useful comments on an earlier draft of the manuscript, while Dr. Peter C. Dworschak (Naturhistorisches Museum in Wien, Vienna, Austria) and an anonymous colleague reviewed the manuscript and made further valuable corrections and suggestions.

## REFERENCES

Anker A. 2003. Alpheid shrimps from the mangroves and

- mudflats of Singapore. Part I. Genera *Salmoneus*, *Athanas* and *Potamalpheops*, with the description of two new species (Crustacea: Decapoda: Caridea). *Raffles B. Zool.* **51**: 283-314.
- Anker A, ST Ahyong. Description of two species in the alpheid shrimp genus *Athanas* Leach, 1814, with remarks on *A. amazone* Holthuis, 1951 (Decapoda, Caridea). *Zootaxa* in press.
- Anker A, ST Ahyong, AR Palmer, PY Noël. 2006a. Morphological phylogeny of alpheid shrimps: parallel preadaptation and the origin of a key morphological innovation, the snapping claw. *Evolution* **60**: 2507-2528.
- Anker A, MS Jeng, TY Chan. 2001. Two unusual new species of Alpheidae (Crustacea, Decapoda), associated with upogebiid mudshrimps in Taiwan and Vietnam. *J. Crustacean Biol.* **21**: 1049-1061.
- Anker A, IN Marin. 2007. *Athanas anaidactylus*, n. sp., a new alpheid shrimp associated with crinoids in the tropical western Pacific (Crustacea: Decapoda). *Zool. Stud.* **46**: 162-167.
- Anker A, D Poddoubtchenko, MS Jeng. 2006b. *Acanthanas pusillus*, new genus, new species, a miniature alpheid shrimp with spiny eyes from the Philippines (Crustacea: Decapoda). *Raffles B. Zool.* **54**: 341-348.
- Anker A, JA Vera Caripe, C Lira. 2006c. Description of a new species of commensal alpheid shrimp (Crustacea: Decapoda) from the southern Caribbean Sea. *Zoosystema* **28**: 683-702.
- Anker A, C d'Udekem d'Acoz, D Poddoubtchenko. 2005. Description of a new species of *Alpheopsis* from the Azores, with remarks on *A. africana* Holthuis, 1952 and other species of the *A. trispinosa* (Stimpson, 1860) group (Crustacea, Decapoda, Caridea, Alpheidae). *Bull. Inst. Roy. Sci. Nat. Belg.* **75**: 97-110.
- Banner AH. 1956. Contributions to the knowledge of the alpheid shrimp of the Pacific Ocean, part I: collections from the Mariana Archipelago. *Pac. Sci.* **10**: 318-373.
- Banner AH. 1959. Contributions to the knowledge of the alpheid shrimp of the Pacific Ocean, part IV: Various small collections from the central Pacific area, including supplementary notes on alpheids from Hawaii. *Pac. Sci.* **13**: 130-155.
- Banner AH, DM Banner. 1960. Contributions to the knowledge of the alpheid shrimp of the Pacific Ocean, part V: the Indo-Pacific members of the genus *Athanas*. *Pac. Sci.* **14**: 129-155.
- Banner AH, DM Banner. 1966a. Contributions to the knowledge of the alpheid shrimp of the Pacific Ocean, part X: collections from Fiji, Tonga and Samoa. *Pac. Sci.* **20**: 145-188.
- Banner AH, DM Banner. 1966b. The alpheid shrimp of Thailand: the alpheid shrimp of the Gulf of Thailand and adjacent waters. *Siam Soc. Monogr.* **3**: i-vi + 1-168.
- Banner AH, DM Banner. 1968. Contributions to the knowledge of the alpheid shrimp of the Pacific Ocean, part XII: collections from the Marshall and Caroline Islands. *Micronesica* **4**: 261-294.
- Banner AH, DM Banner. 1971. Contributions to the knowledge of the alpheid shrimp of the Pacific Ocean, part XIV: A review of *Prionalpheus* (Decapoda, Alpheidae) with the description of two new species. *Crustaceana* **20**: 263-270.
- Banner AH, DM Banner. 1983. An annotated checklist of the alpheid shrimp from the western Indian Ocean. *Trav. Doc. ORSTOM* **158**: 1-164.
- Banner DM, AH Banner. 1973. The alpheid shrimp of Australia, part I: the lower genera. *Rec. Austr. Mus.* **28**: 291-382.
- Banner DM, AH Banner. 1975. The alpheid shrimp of Australia, part II: the genus *Synalpheus*. *Rec. Austr. Mus.* **29**: 267-389.
- Banner DM, AH Banner. 1978. Annotated checklist of alpheid and ogyridid shrimp from the Philippine Archipelago and the South China Sea. *Micronesica* **14**: 215-257.
- Banner DM, AH Banner. 1981. Annotated checklist of the alpheid shrimp of the Red Sea and Gulf of Aden. *Zool. Verh. Leiden* **190**: 1-99.
- Banner DM, AH Banner. 1982. The alpheid shrimp of Australia, part III: the remaining alpheids, principally the genus *Alpheus*, and the family Ogyrididae. *Rec. Austr. Mus.* **34**: 1-357.
- Bate CS. 1888. Report on the Crustacea *Macrura* dredged by H.M.S. Challenger during the years 1873-76. The voyage of H.M.S. Challenger, *Zoology* **24**: i-xi + 1-942, 157 pls. London: Eyre and Spottiswoode.
- Boone L. 1935. Crustacea: Anomura, *Macrura*, Euphausiacea, Isopoda, Amphipoda and Echinodermata: Asteroidea and Echinoidea. In Scientific results of the world cruise of the yacht "Alva", 1931, William K. Vanderbilt, Commanding. *Bull. Vanderbilt Mar. Mus.* **6**: 1-264, pls. 1-96.
- Borradaile LA. 1898. On some crustaceans from the South Pacific. Part III. *Macrura*. *Proc. Zool. Soc. Lond.* **1898**: 1000-1015, pls. 63-65.
- Bruce AJ. 1989. A report on some coral reef shrimps from the Philippine Islands. *Asian Mar. Biol.* **6**: 173-192.
- Bruce AJ. 1990a. Redescriptions of five Hong Kong Caridean shrimps first described by W. Simpson, 1860. In Morton B, ed. Proceedings of the Second Marine Biological Workshop: the marine flora and fauna of Hong Kong and southern China. Hong Kong: Hong Kong University Press **2**: 569-610.
- Bruce AJ. 1990b. Additions to the marine shrimp fauna of Hong Kong. In Morton B, ed. Proceedings of the Second International Marine Biological Workshop: the marine flora and fauna of Hong Kong and southern China. Hong Kong: Hong Kong University Press **2**: 611-648.
- Chace FA. 1955. Notes on shrimps from the Marshall Islands. *Proc. US Natl. Mus.* **105**: 1-22.
- Chace FA. 1988. The caridean shrimps (Crustacea: Decapoda) of the Albatross Philippine Expedition, 1907-1910, part 5: family Alpheidae. *Smiths. Contrib. Zool.* **466**: i-v + 1-99.
- Coutière H. 1897. Notes sur quelques alphéidés nouveaux ou peu connus rapportés de Djibouti (Afrique Orientale). *Bull. Mus. Hist. Nat.* **3**: 233-236.
- Coutière H. 1899. Les "Alpheidae", morphologie externe et interne, formes larvaires, bionomie. *Ann. Sci. Nat., Zool. sér. 8*, **9**: 1-560, pls. 1-6. Paris: Masson et Cie.
- Coutière H. 1903. Note sur quelques Alpheidae des Maldives et Laquedives. *Bull. Soc. Philom. Paris, sér. 9*, **5**: 72-90.
- Coutière H. 1905. Les Alpheidae. In Gardiner JS, ed. The fauna and geography of the Maldives and Laccadive Archipelagoes. **2**: 852-921, pls. 70-87. Cambridge: Cambridge University Press.
- Coutière H. 1908. Sur quelques nouvelles espèces d'Alpheidae. *Bull. Soc. Philomat. Paris, sér. 9*, **10**: 191-216.
- Coutière H. 1911. Sur les Alpheidae du genre *Athanas* Leach, provenant des collections de S.A.S. le Prince de Monaco (*Ath. Grimaldii*, n. sp.). *Bull. Inst. Océanogr. Monaco* **197**: 1-7.
- Czerniawsky V. 1884. *Pribrezhnyia Desiatinogiya*

- Rakoobraznyia Ponta - Materialia ad zoogeographiam ponticam comparatam. Fasc. II. Crustacea Decapoda Pontica littoralia. Khar'kov: Universitetskaya Tipografiya, 269 p., 7 pls.
- de Man JG. 1910. Diagnoses of new species of macrurous decapod Crustacea from the "Siboga-Expedition". Tijdsch. Nederl. Dierk. Ver. II **11**: 287-319.
- de Man JG. 1920. Diagnoses of some new species of Penaeidae and Alpheidae with remarks on two known species of the genus *Penaeopsis* A. Milne Edwards from the Indian Archipelago. Zool. Meded. **5**: 103-109.
- Frogia C, RJA Atkinson. 1998. Association between *Athanas amazone* (Decapoda: Alpheidae) and *Squilla mantis* (Stomatopoda: Squillidae). J. Crustacean Biol. **18**: 529-532.
- Gherardi F. 1991. Eco-ethological aspects of the symbiosis between the shrimp *Athanas indicus* (Coutière 1903) and the sea urchin *Echinometra mathaei* (de Blainville 1825). Trop. Zool. **4**: 107-128.
- Gherardi F, C Calloni. 1993. Protandrous hermaphroditism in the tropical shrimp *Athanas indicus* (Decapoda: Caridea), a symbiont of sea urchins. J. Crustacean Biol. **13**: 675-689.
- Hayashi KI. 1995. Prawns, shrimps and lobsters from Japan (83). Family Alpheidae - genus *Arete*. Aquabiology **17**: 184-187.
- Hayashi KI. 2002. A new species of the genus *Athanas* (Decapoda, Caridea, Alpheidae) living in the burrows of a mantis shrimp. Crustaceana **75**: 395-403.
- Heller C. 1862. Beiträge zur Crustaceen-Fauna des Rothen Meeres. Sitzungsber. Math.-Naturw. Cl. Kais. Akad. Wiss. Wien **44**: 241-295, pls. 1-3.
- Holthuis LB. 1951. The caridean Crustacea of tropical West Africa. Atlantide Rep. **2**: 7-187.
- Holthuis LB. 1993. The recent genera of the caridean and stenopodidean shrimps (Crustacea Decapoda). Leiden: Nationaal Natuurhistorisches Museum. 328 pp.
- Holthuis LB, E Gottlieb. 1958. An annotated list of the decapod Crustacea of the Mediterranean coast of Israel, with an appendix listing the Decapoda of the eastern Mediterranean. Bull. Res. Council Isr. **7B**: 1-126, pls. 1-3.
- Jacquotte R. 1964. Notes de faunistique et de biologie marine de Madagascar. II Décapodes nageurs associés aux échinodermes dans la région de Tuléar. Rec. Trav. Sta. Mar. Endoume **32**: 179-181.
- Kemp S. 1915. The fauna of the Chilka Lake, Crustacea, Decapoda. Mem. Ind. Mus. **5**: 199-326, pls. 12, 13.
- Kubo I. 1936. A description of a new alpheoid shrimp from Japan. J. Imp. Fish. Inst. **31**: 43-46, pl. 13.
- Kubo I. 1940. Notes on the Japanese shrimps of the genus *Athanas* with a description of one new species. Annot. Zool. Jpn. **19**: 99-106.
- Kubo I. 1942. On a snapping shrimp, *Athanas kominatoensis*. Dobutsugaku Zasshi (Zool. Mag. Tokyo) **54**: 82-85.
- Kubo I. 1951. Some macrurous decapod Crustacea found in Japanese waters, with descriptions of four new species. J. Tokyo Univ. Fish. **38**: 259-289.
- Leach WE. 1814. Crustaceology. In D Brewster, ed. The Edinburgh encyclopaedia, **7**: 383-437.
- Marin IN, A Anker, TA Britayev, RA Palmer. 2004. Symbiosis between the alpheid shrimp, *Athanas ornithorhynchus* Banner and Banner, 1973 (Crustacea: Decapoda), and the brittle star *Macrophiothrix longipeda* (Lamarck, 1816) (Echinodermata: Ophiuroidea). Zool. Stud. **44**: 234-241.
- Martínez-Iglesias JC, A Carvacho. 1991. Les crevettes carides de Cuba I. *Prionalpheus gomezi* n. sp. (Decapoda, Alpheidae), premier *Prionalpheus* pour l'Océan Atlantique. Crustaceana **60**: 84-89.
- Miya Y, S Miyake. 1968. Revision of the genus *Athanas* of Japan and the Ryukyu Islands, with description of a new species (Crustacea, Decapoda, Alpheidae). Publ. Amakusa Mar. Biol. Lab. Kyushu Univ. **1**: 129-162.
- Nomura K, S Nagai, A Asakura, T Komai. 1996. A preliminary list of shallow water decapod Crustacea in the Kerama Group, the Ryukyu Archipelago. Bull. Biog. Soc. Jpn. **51**: 7-21.
- Ortmann A. 1894. Crustaceen. In R Semon, ed. Zoologische Forschungsreisen in Australien und dem Malayischen Archipel mit Unterstützung des Herrn Dr. Paul von Ritter ausgeführt in den Jahren 1891-93. Denksch. Med.-Naturw. Ges. Jena **8**: 3-80, pls. 1-3.
- Pearson J. 1905. Report on the Macrura collected by Professor Herdman, at Ceylon in 1902. In WA Herdman. Report to the government of Ceylon on the pearl oyster fisheries of the Gulf of Maanar **4**: 65-92, pls. 1-2.
- Ramadan MM. 1936. Report on a collection of Stomatopoda and Decapoda from Ghardaga, Red Sea. Bull. Fac. Sci. Egypt. Univ. **6**: 1-43, pls. 1-2.
- Richters F. 1880. Decapoda. In K Möbius, ed. Beiträge zur Meeresfauna der Insel Mauritius und der Seychellen. pp. 139-178, pls. 15-18.
- Risso A. 1816. Histoire naturelle des crustacés des environs de Nice, 175 p., pls. 1-3. Paris: Librairie Grecque-Latine-Allemande.
- Stimpson W. 1860. Prodromus descriptionis animalium evertibratorum, quae in Expeditione ad Oceanum Pacificum Septentrionalem, a Republica Federata missa, Cadwaladaro Ringold et Johanne Rodgers Ducibus, observavit et descripsit. Pars VIII. Crustacea Macrura. Proc. Acad. Nat. Sci. Phil. **1860**: 22-47.
- Suzuki H. 1970. Taxonomic review of four alpheid shrimps belonging to the genus *Athanas*, with reference to their sexual phenomena. Sci. Rep. Yokohama Natl. Univ. sect. **2** **17**: 1-38, pls. 1-4.
- Tattersall WM. 1921. Report on the Stomatopoda and macrurous Decapoda collected by Mr. Cyril Crossland in the Sudanese Red Sea. J. Linn. Soc. Lond. Zool. **34**: 345-398, pls. 27-28.
- Yokoya Y. 1936. Some rare and new species of decapod crustaceans found in the vicinity of the Misaki Marine Biological Station. Jpn. J. Zool. **7**: 129-146.
- Yu SC. 1931. Description de deux nouvelles crevettes de Chine. Bull. Mus. Nat. Hist. Nat. sér. **2,3**: 513-516.