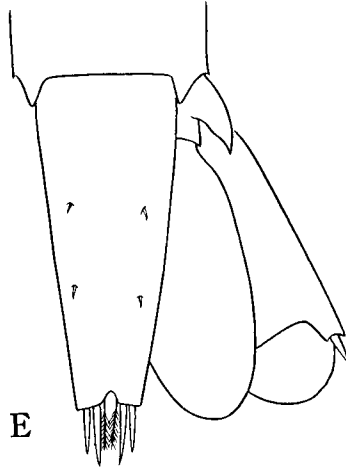
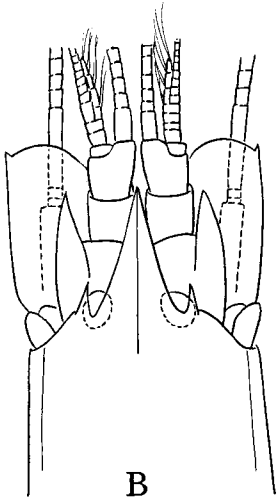
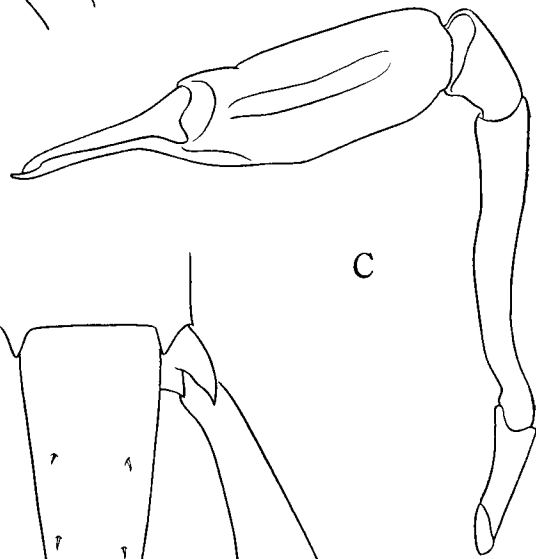
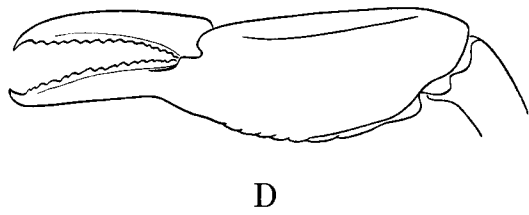
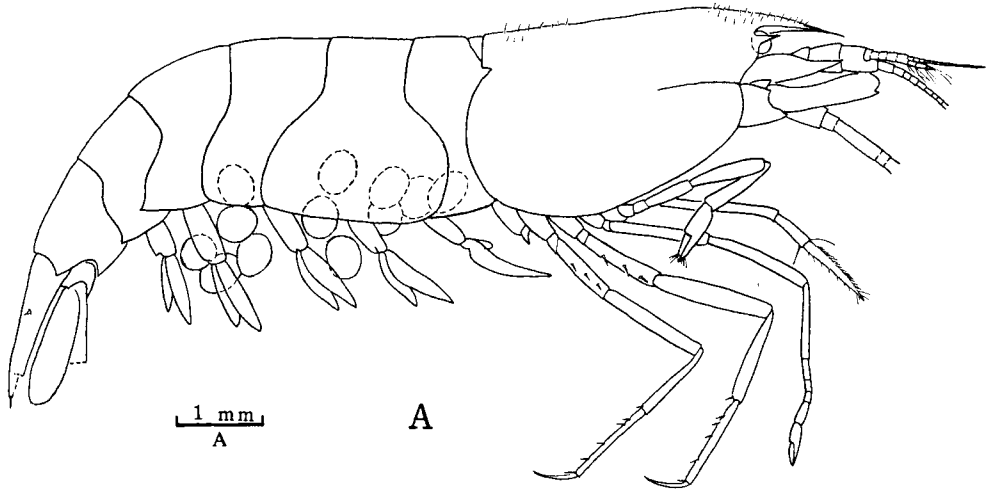


Plate 3

Salmoneus gracilipes sp. nov.

- Fig. A. Holotype, ovig. ♀, 4.1 mm in carapace length.
Fig. B. Anterior region, dorsal view.
Fig. C. Large cheliped, outer view.
Fig. D. Large chela, outer face.
Fig. E. Tail fan, dorsal view, paratype, ovig. ♀ (6.4 mm in c.l.).



1 mm
B, C, D, E

Plate 4

Salmoneus babai Miyake and Miya, 1966

Fig. A. Holotype, ovig. ♀, 7.7 mm in carapace length.

Fig. B. Anterior region, lateral view, paratype, ♂ (4.0 mm in c.l.).

Figs. C and D. Telson, dorsal view, showing variations, respectively, holotype ovig.
♀ and paratype ♂.

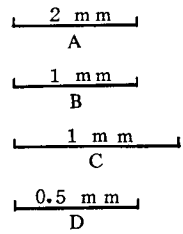
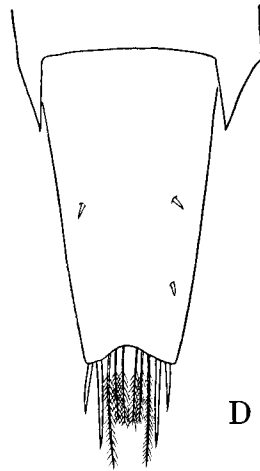
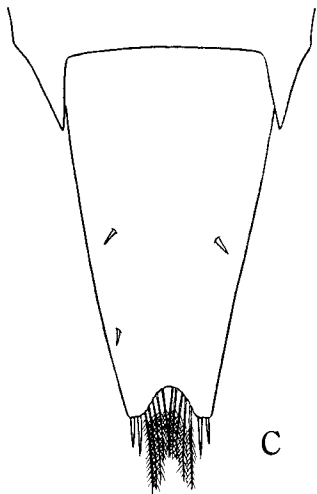
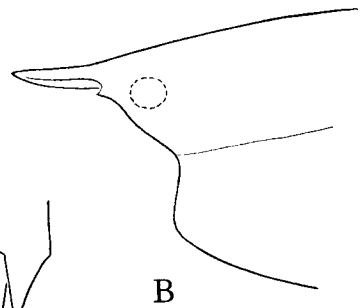
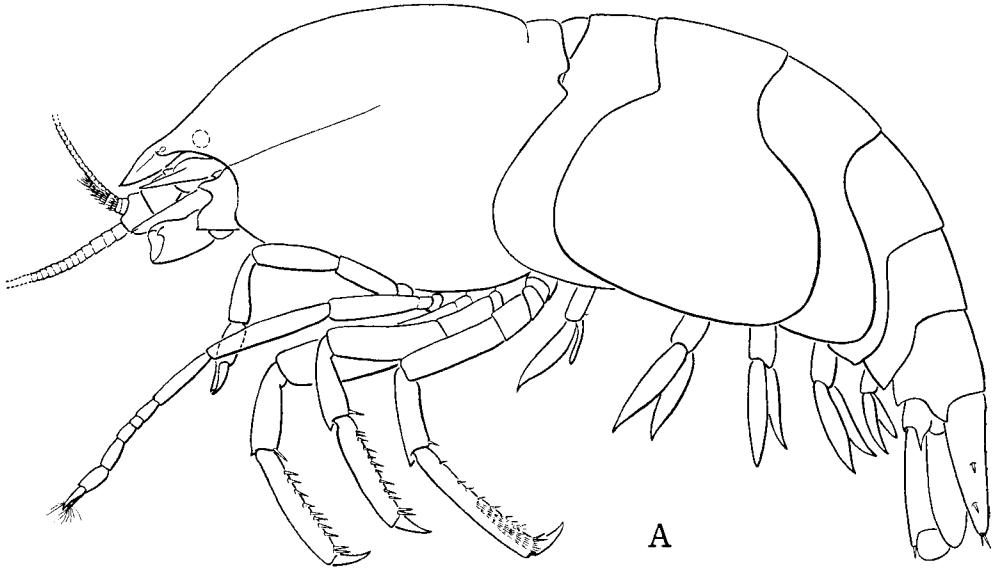


Plate 5

Salmoneus tricristatus Banner, 1959

- Fig. A. Male, 4.5 mm in carapace length.
- Fig. B. Anterior region, dorsal view.
- Fig. C. Large cheliped, outer view.
- Fig. D. Large chela, inner face.
- Fig. E. Tail fan, dorsal view.

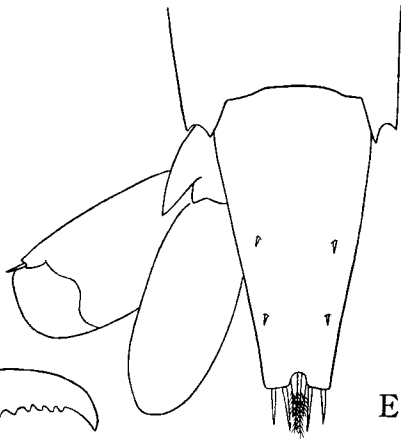
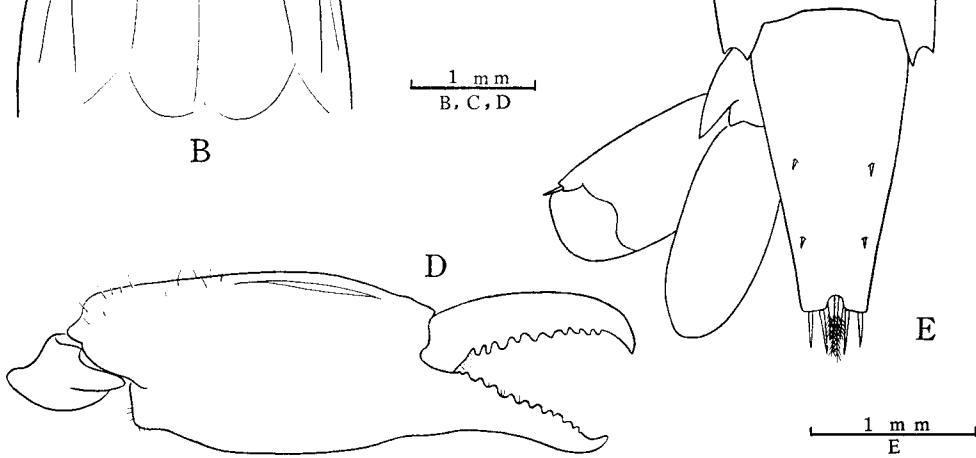
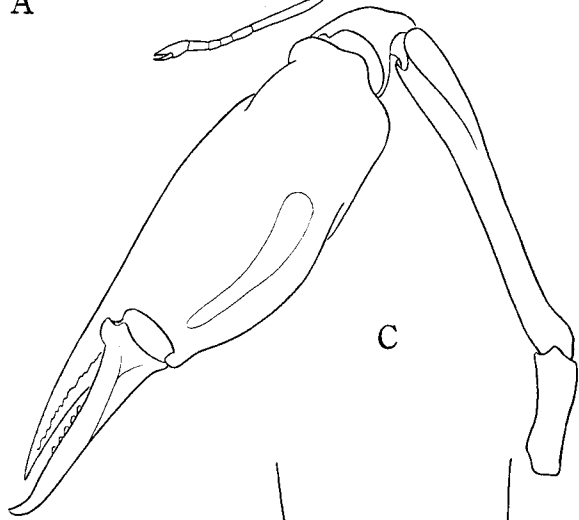
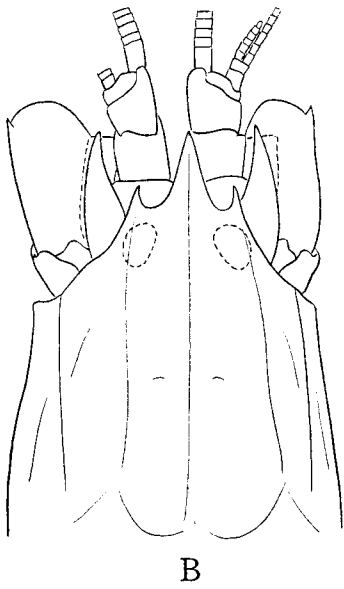
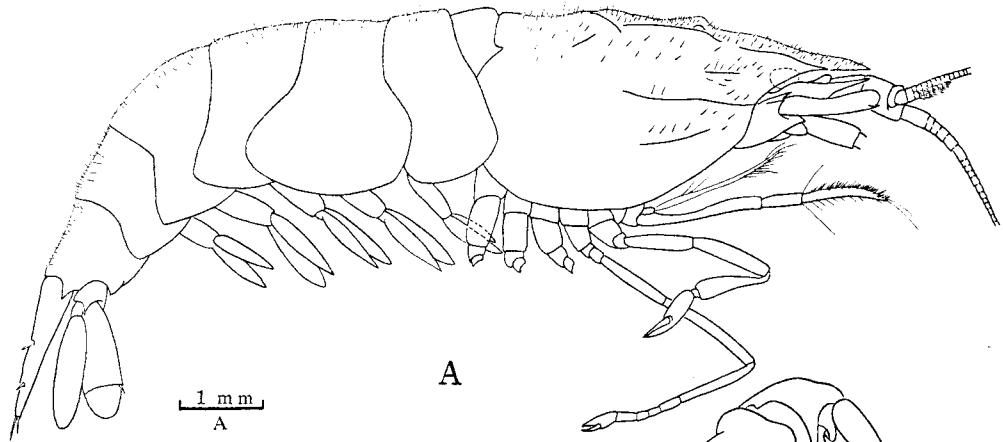


Plate 6

Synalpheus striatus Kubo, 1938

Fig. A. Male, 13.0 mm in carapace length.

Figs. B and C. Anterior region, dorsal view, showing variations, respectively, ♂ (13.0 mm in c.l.) and ♂ (12.9 mm in c.l.).

Fig. D. Large chela, inner surface.

Fig. E. Small cheliped, inner view.

Fig. F. Dactylus of left third pereiopod.

Figs. G and H. Tail fan, dorsal view, showing variations, respectively, ♂ (13.0 mm in c.l.) and ♂ (12.9 mm in c.l.).

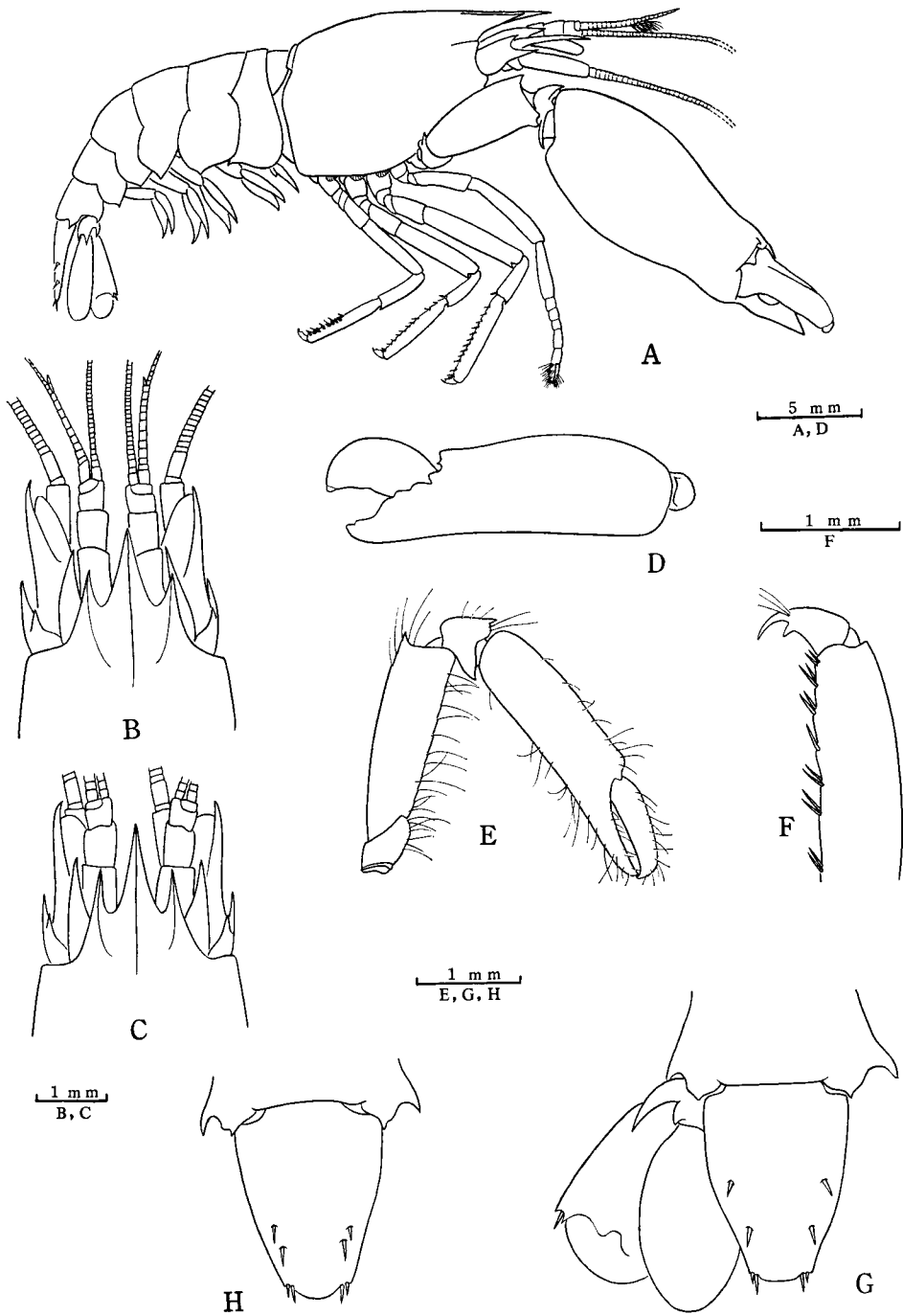


Plate 7

Synalpheus odontophorus De Man, 1909

Fig. A. Male, 6.1 mm in carapace length.

Fig. B. Anterior region, dorsal view.

Fig. C. Large chela, inner surface.

Fig. D. Small cheliped, outer view.

Fig. E. Dactylus of right third pereopod.

Fig. F. Tail fan, dorsal view.

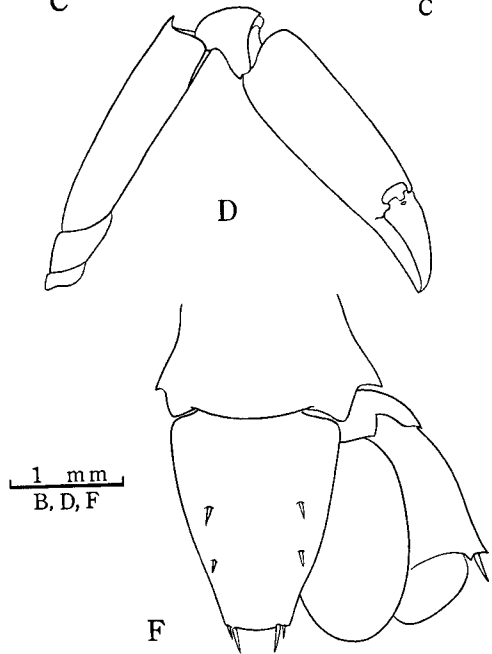
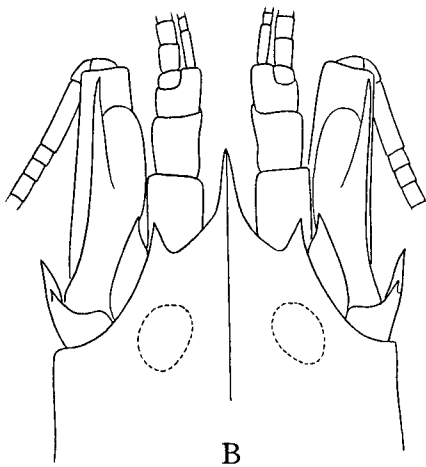
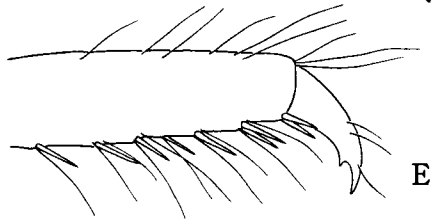
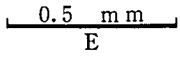
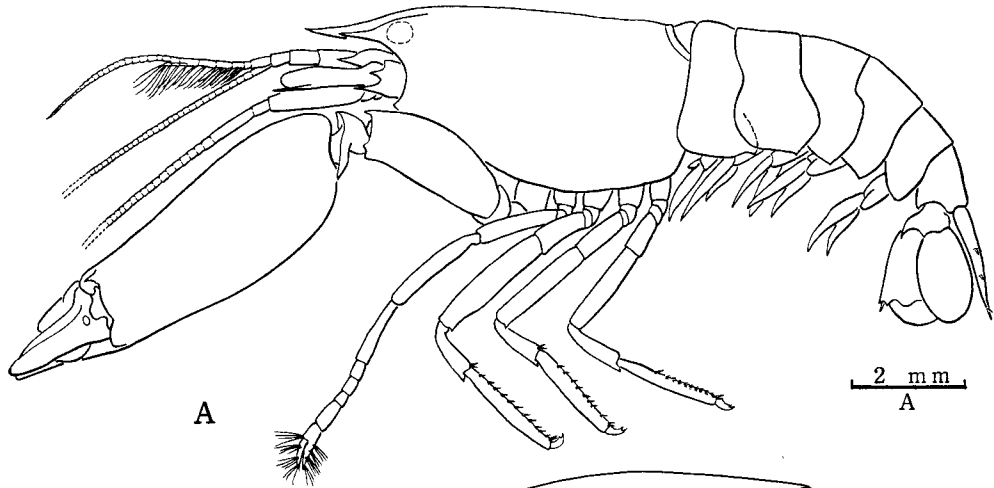


Plate 8

Synalpheus charon (Heller, 1861)

Fig. A. Male, 4.3 mm in carapace length.

Figs. B and C. Anterior region, dorsal view, showing variations, respectively, ovig.

♀ (6.2 mm in c.l.) and ♂ (4.9 mm in c.l.).

Fig. D. Small cheliped, outer view, ♂ (4.9 mm in c.l.).

Fig. E. Dactylus of left third pereopod, ovig. ♀ (6.9 mm in c.l.).

Fig. F. Tail fan, dorsal view, ovig. ♀ (6.2 mm in c.l.).

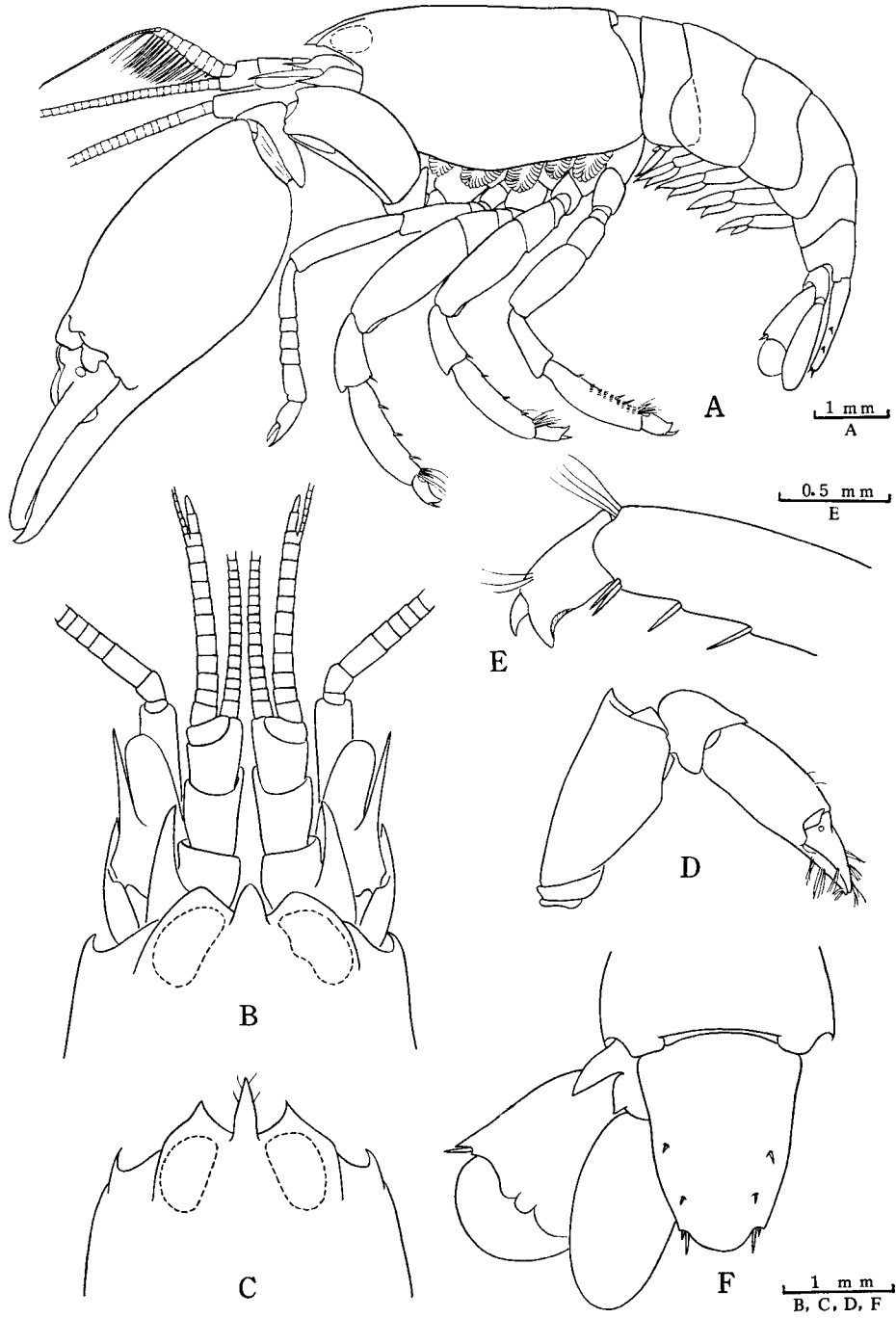


Plate 9

Synalpheus paraneomeris Coutière, 1905

- Fig. A. Male, 3.8 mm in carapace length.
Fig. B. Anterior region, dorsal view.
Fig. C. Small cheliped, outer view.
Fig. D. Dactylus of left third pereopod.
Fig. E. Tail fan, dorsal view.

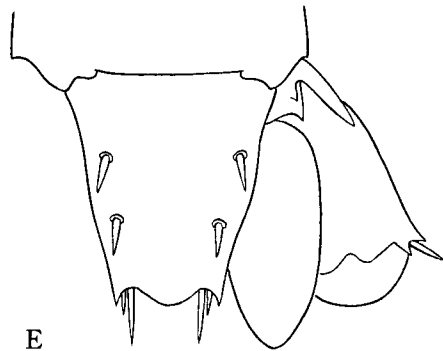
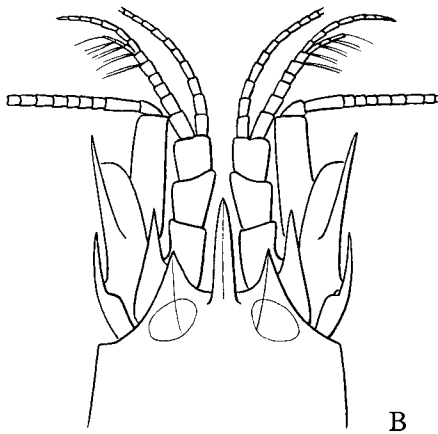
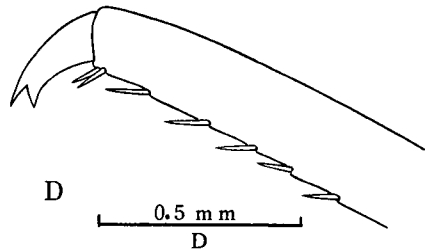
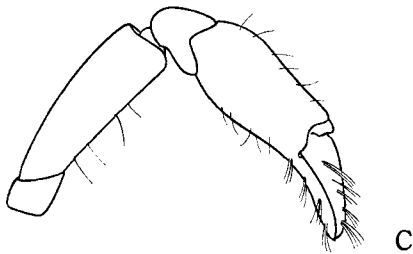
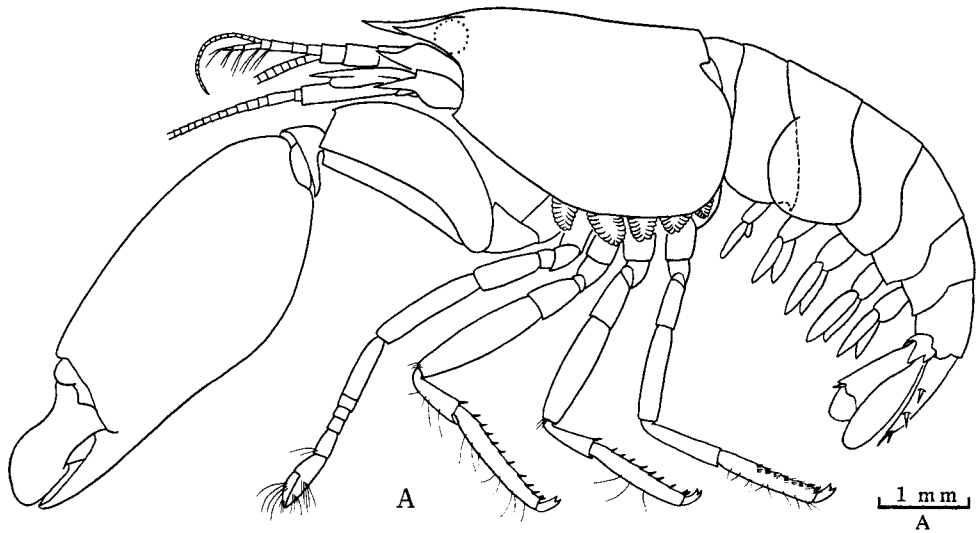


Plate 10

Synalpheus bituberculatus De Man, 1910

Fig. A. Male, 5.0 mm in carapace length.

Figs. B-D. Anterior region, dorsal view, showing variations, respectively, ♂ (5.0 mm in c.l.), ovig. ♀ (5.8 mm in c.l.), and ♂ (4.9 mm in c.l.).

Fig. E. Large chela, inner face.

Fig. F. Small cheliped, inner view.

Fig. G. Dactylus of left third pereopod.

Fig. H. Tail fan, dorsal view.

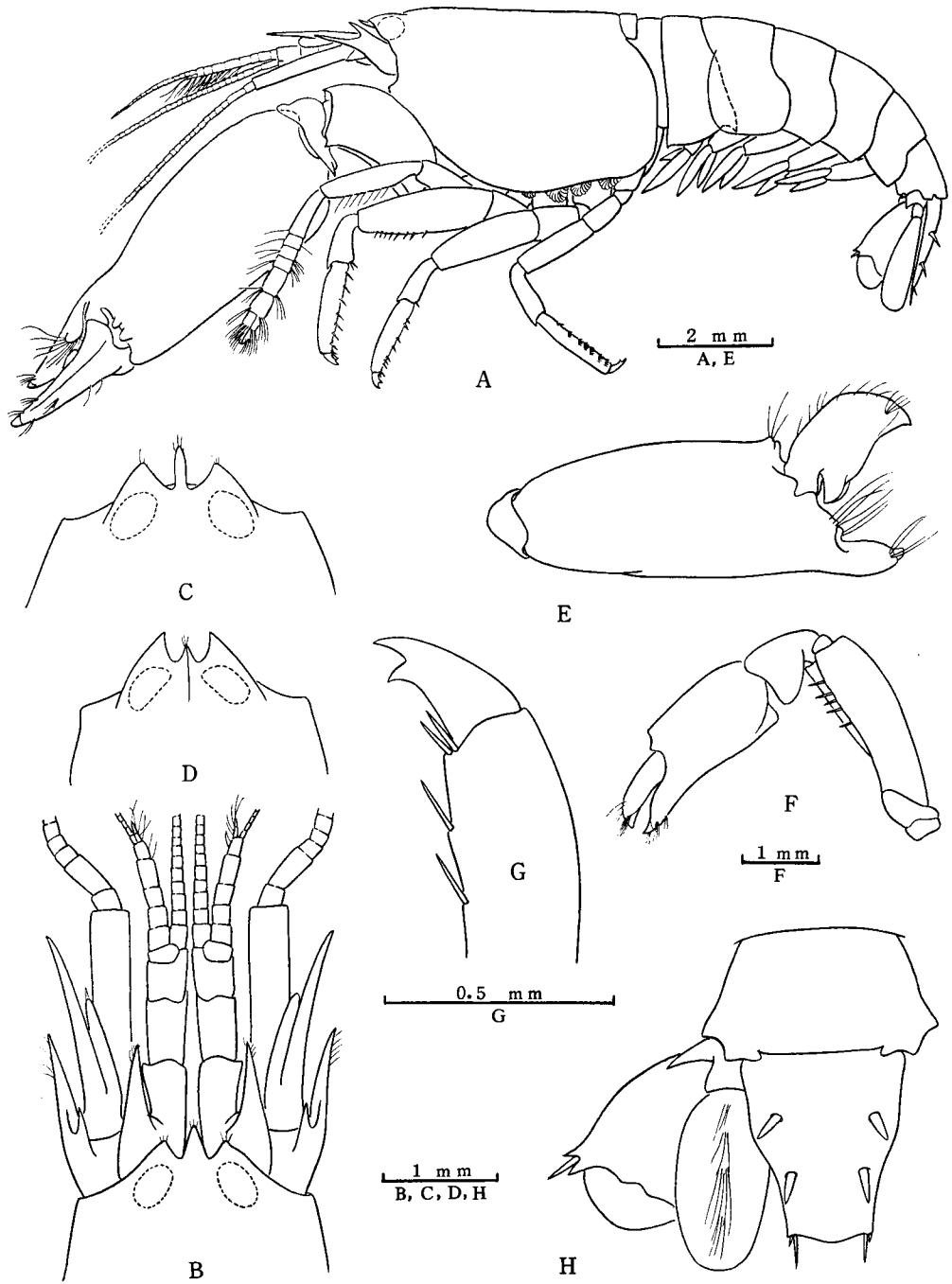
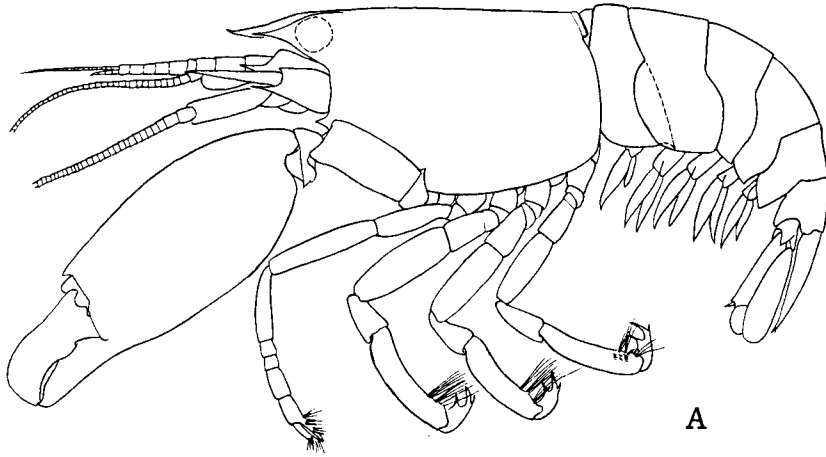


Plate 11

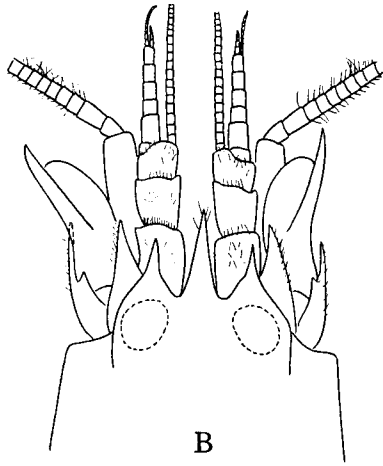
Synalpheus demani Borradaile, 1900

- Fig. A. Male, 4.9 mm in carapace length.
- Fig. B. Anterior region, dorsal view.
- Fig. C. Large chela, inner face.
- Fig. D. Small cheliped, inner view.
- Fig. E. Left second pereopod, ovig. ♀ (10.2 mm in c.l.).
- Fig. F. Dactylus and propodus of left third pereopod.
- Fig. G. Tail fan, dorsal view.



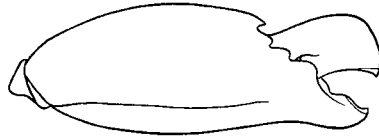
A

2 mm
A, C, E

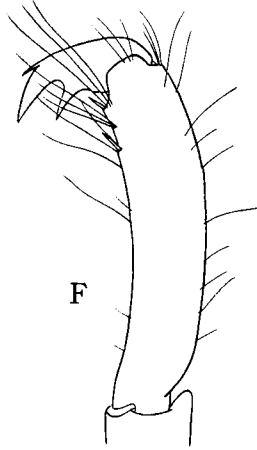


B

1 mm
B

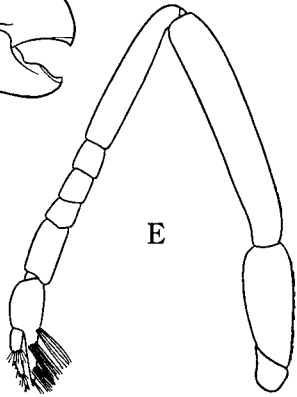


C

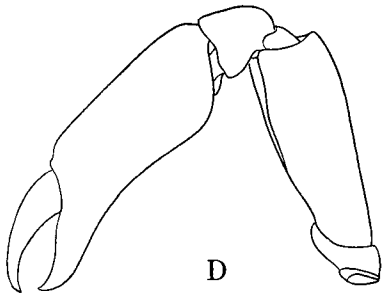


F

0.5 mm
F

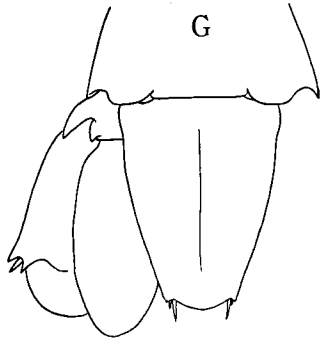


E



D

1 mm
D, G



G

Plate 12

Synalpheus tumidomanus (Paulson, 1875)

- Fig. A. Male, 4.5 mm in carapace length.
Fig. B. Anterior region, dorsal view.
Fig. C. Small cheliped, inner view, ♂ (4.8 mm in c.l.).
Fig. D. Dactylus of left third pereopod.
Fig. E. Tail fan, dorsal view.

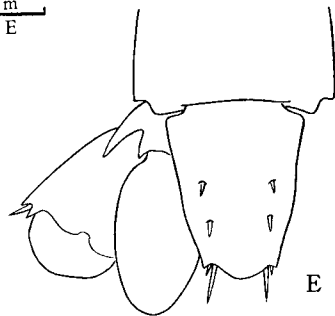
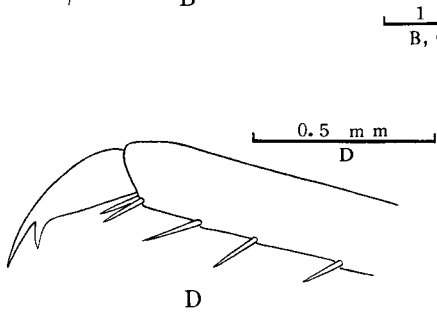
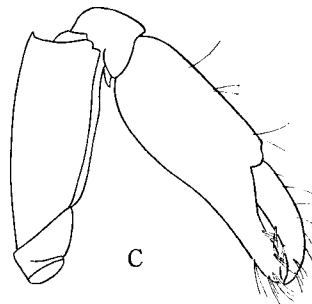
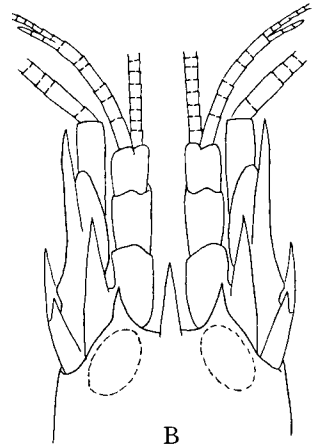
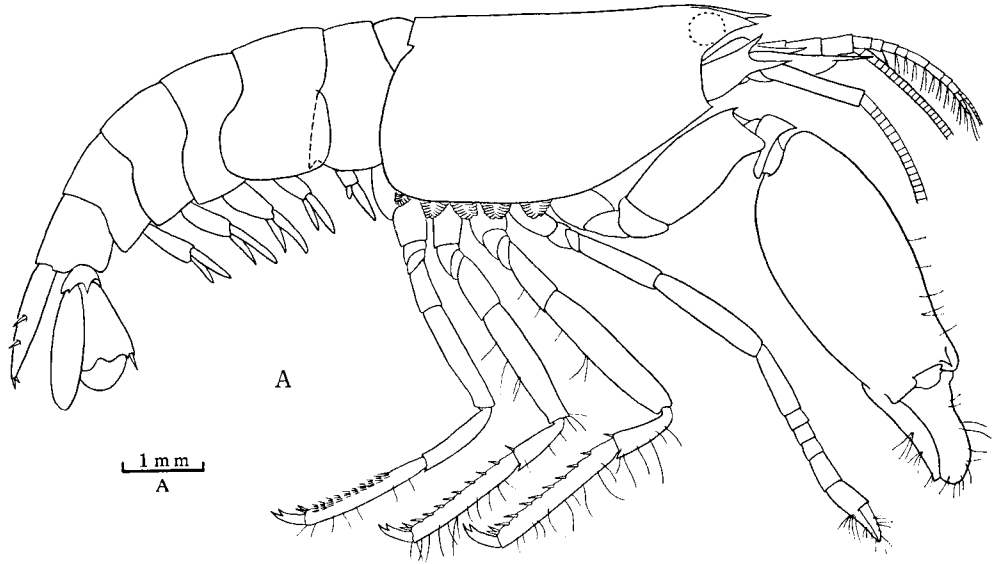


Plate 13

Synalpheus gravieri Coutière, 1905

- Fig. A. Male, 5.0 mm in carapace length.
Fig. B. Anterior region, dorsal view, ♂ (6.1 mm in c.l.).
Fig. C. Small cheliped, inner view, ♂ (6.1 mm in c.l.).
Fig. D. Dactylus of left third pereopod, ♂ (5.0 mm in c.l.).
Fig. E. Tail fan, dorsal view, ♂ (6.1 mm in c.l.).

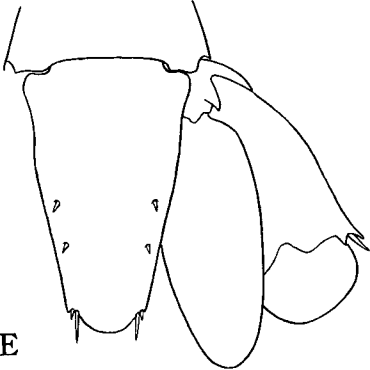
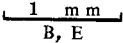
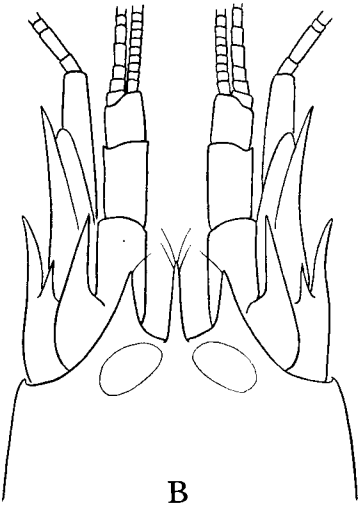
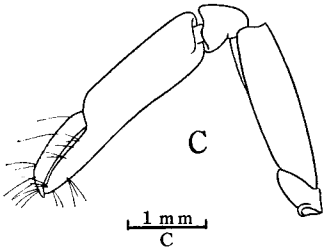
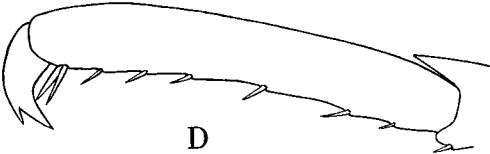
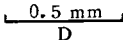
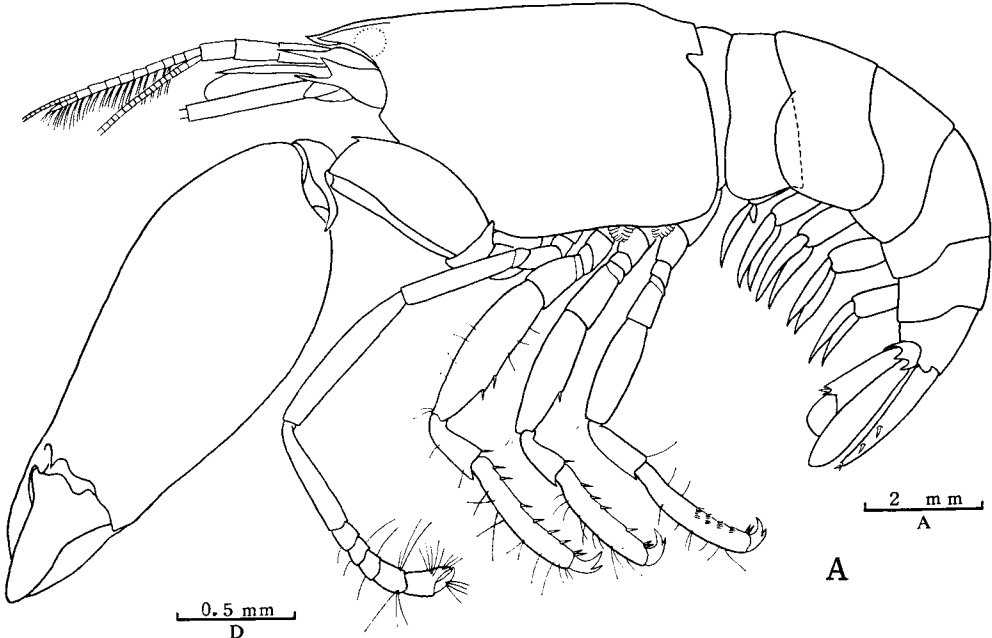


Plate 14

Synalpheus streptodactylus streptodactylus Coutière, 1905

- Fig. A. Male, 3.8 mm in carapace length.
- Fig. B. Anterior region, dorsal view.
- Fig. C. Large chela, inner face.
- Fig. D. Small cheliped, outer view.
- Fig. E. Dactylus of left third pereopod.
- Fig. F. Tail fan, dorsal view.

