

**THE PONTONIINE SHRIMPS (CRUSTACEA: DECAPODA: PALAEMONIDAE)
FROM ANAMBAS AND NATUNA ISLANDS, INDONESIA,
COLLECTED BY ANAMBAS EXPEDITION, 2002**

Xinzheng Li

*Institute of Oceanology, Chinese Academy of Sciences, 7 Nanhai Road, Qingdao 266071, China
Email: lixzh@ms.qdio.ac.cn*

ABSTRACT. – The present paper reports 8 pontoniine shrimp species, from Anambas and Natuna, Indonesia, i. e., *Anchistus miersi* (De Man, 1888), *Conchodytes meleagrinae* Peters, 1852, *Hamodactylus boschmai* Holthuis, 1952, *Jocaste japonica* (Ortmann, 1890), *Palaemonella pottsi* (Borradaile, 1915), *Periclimenes andamanensis* Kemp, 1922, *Periclimenes attenuatus* Bruce, 1971, and *Periclimenes grandis* (Stimpson, 1860).

KEY WORDS. – Crustacea, Decapoda, Palaemonidae, Pontoniinae, Anambas, Indonesia, taxonomy.

INTRODUCTION

The Subfamily Pontoniinae is a large caridean group, distributed mainly in tropical and subtropical waters, particularly in Indo-West Pacific, and most of the species of this subfamily are commensal, associated mainly with coelenterates, sponges, bivalve mollusks, echinoderms, tunicates, and several species are cleaners of fishes. The Indonesia Pontoniinae fauna having been under study since the time of Rumphius (1775), although there have been many reports about pontoniine shrimps from Indonesia waters (e.g., Holthuis, 1952; Bruce, 1972, 1984; Chace & Bruce, 1993), any additions to the Indonesia fauna and new taxa are still reported and described. Among the samples collected by the Anambas Expedition, March of 2002, from Anambas and Natuna Islands (between 02°52'N ~ 04°43'N, 105°40'E ~ 108°13'E), Indonesia, 8 species of Pontoniinae shrimps are reported here.

SYSTEMATIC ACCOUNT

***Anchistus miersi* (De Man, 1888)**

Harpilius Miersi De Man, 1888: 274, pl. 17, figs. 6-10.

Anchistus miersi - Borradaile, 1898: 387; Holthuis, 1952: 110, fig. 45; Chace & Bruce, 1993: 72; Müller, 1993: 9; Fransen, 1994: 89, pl. 1D; Li, 1996: 224, fig. 2; 1997: 228; 2000: 10-12, fig. 11.

Material examined. – 1 male, Jemaja Island, Anambas (no detailed locality data), associated with *Tridacna* sp., 12 Mar.2002.

Distribution. – No record from Indonesian waters previously. The species is known from various localities throughout the Indo-West Pacific, living in association with bivalve mollusks of genera *Hippopus* and *Tridacna*.

***Conchodytes meleagrinae* Peters, 1852**

Conchodytes meleagrinae Peters, 1852: 594; Borradaile, 1917: 393; Kemp, 1922: 285; Kubo, 1940: 58, figs. 24-25; Bruce, 1977a: 73, fig. 14c, d; Müller, 1993: 14-15; Fransen, 1994: 96, fig. 21, pl. 1E; Li, 1997: 228, fig. 4, 5a-e; 2000: 25, fig. 26; 2001: 77.

Material examined. – 1 male, Site EA-D05, 02°52.80'N, 105°50.43'E, Anambas: SW coast of P. Matak: islet SE Tanjung Yang, off Selat Peninting, 30m, coll. THH, Adrim, Mantor, Agus, Yusri, Mags, Anjo, Tek, CSC, 14 Mar.2002.

Distribution. – Not definitely reported from Indonesian waters previously, although many authors reported this species wide spread in the Indo-Pacific, ranging from the Red Sea to French Polynesia and Hawaii (e.g., Kemp, 1922; Bruce, 1978, 1979, 1991; Chace & Bruce, 1993; Fransen, 1994; De Grave, 1999). The record nearest to Indonesian waters, as I known, is Torres Straits (Bate, 1888). Associated with bivalve mollusks, usually with the genus *Pinctada*.

Remarks. – The species is closely allied to *Conchodytes tridacnae* Peters, 1852. It differs from the latter in having the carpus of the first pereopod distinctly shorter than the merus. The carpus of the first pereopod is subequal to the merus.

***Hamodactylus boschmai* Holthuis, 1952**

Hamodactylus boschmai Holthuis, 1952: 209-212, figs. 102-104; Bruce, 1982: 272, figs. 25, 26; Müller, 1993: 27; Bruce & Coombes, 1995: 108; Li, 2000: 58, fig. 61.

Material examined. – 1 female, Site EA-D10, 04°37'39.8"N, 107°58'18.1"E, Natuna: rocky islet, SE Pulau Laut, the habitat is fringing reef off rocky islet, lot of *Poritis*, *Acropora*, and soft corals, coll. THH, Adrim, Mantor, Agus, Yusri, Mags, Anjo, Tek, CSC, DY, TT, 16 Mar.2002.

Distribution. – Previously reported from the type locality, Ternate and Djedan, Indonesia, and also Kenya, Zanzibar, Madagascar, Hong Kong, Singapore, New Caledonia, Northern Territory and Queensland, Australia; associated with gorgonians.

***Jocaste japonica* (Ortmann, 1890)**

Coralliocaris superba var. *japonica* Ortmann, 1890: 509, pl. 22. *Jocaste japonica* - Patton, 1966: 279, fig. 3b; Fransen, 1989: 146; Müller, 1993: 35; Li, 1996: 225, fig. 4; 1997: 233; Li, 2000: 69, fig. 70; 2001: 79; De Grave, 2000: 125.

Material examined. – 1 female, Site EA-D11, 04°37'39.8"N, 107°58'18.1"E, Natuna: rocky islet, SE Pulau Laut, coll. THH, Adrim, Agus, Yusri, DY, TT, 16 Mar.2002.

Distribution. – Widely distributed in the tropical Indo-West Pacific, associated with branching *Acropora* corals. It was previously recorded from Indonesian waters at Borneo Island and adjacent region (Bruce, 1969).

Remarks. – This species is close to *Jocaste lucina* (Nobili, 1901) and *J. platysoma* Fransen, 1994. It can be distinguished from these two species by the rostrum with 3-5 dorsal and 1-2 ventral teeth, and from *J. lucina* also by lateral rostral carina gradually expanding posterior into convex supuraocular eave, and the major second pereopod with 1 tooth on the cutting edge of the dactyl; from *J. platysoma* also by the rostrum exceeding antennular peduncle, body depressed.

***Palaemonella pottsi* (Borradaile, 1915)**

Periclimenes (Falciger) pottsi Borradaile, 1915: 212. *Periclimenes pottsi* - Potts, 1915: 82. *Palaemonella pottsi* - Kemp, 1922: 126; Bruce, 1970: 274, 279, figs. 1, 3-7; 2002: 290; Müller, 1993: 45; Li, 2000: 103, fig. 113; 2001: 80; De Grave, 2000: 129, fig. 4.

Material examined. – 1 male, Site EA-D03, 03°14'34.9"N, 106°14'32.6"E, Anambas: east coast of Pulau Jemaja: north-eastern corner of Teluk Jebung: off Tanjung Jebung, ?15m depth, coll. THH, Adrim, Mantor, Agus, Yusri, Mags, Anjo, Tek, CSC, DY, TT, 13 Mar.2002.

Distribution. – Widespread from east Africa to the Marshall Islands; associated with crinoids. Previously recorded from Indonesian waters at Marsegu Island, Seram Island, Banda Island, Gotong Island, Misool Island (Bruce, 1983a).

Remarks. – This species is the only known commensal species of the genus. It is close to *Palaemonella rotumana* (Borradaile, 1898). As indicated by Bruce (1970) and De Grave (2000), the dactyls and propodi of the ambulatory pereopods are different in the two species. The present male specimen has the flexor margin of the dactyl of the ambulatory pereopod distinctly sinuous, and the distoventral propodal spines are small and short, less than 0.13 times as long as the dactyl, indicating that it is identical to *P. pottsi*.

***Periclimenes andamanensis* Kemp, 1922**

Periclimenes (Ancylocaris) andamanensis Kemp, 1922: 204, figs. 54-57. *Periclimenes andamanensis* – Dammerman, 1948: 511, fig. 43; Bruce, 1977b: 269; Chace & Bruce, 1993: 103; Li, 1996: 229, fig. 7; 1997: 238; 2000: 156, fig. 192; 2001: 81. *Periclimenes (Harpilius) andamanensis* – Holthuis, 1952: 79.

Material examined. – 33 males, 9 females, 13 ovigerous females, Site EA-JL01, Anambas: Pulau Jemaja: northern edge of Teluk Tiru, opposite Pulau Punisan, coll. Joelle, Ben, Zaidi, Huang, 12 Mar.2002; 1 male, 1 ovigerous female, Site EA-ZJ04, Anambas: east coast of Pulau Jemaja: north-eastern corner of Teluk Jebung: western-most of a pair of islands off Tanjung Jebung, 13 Mar.2002; 10 males, 19 females, 8 ovigerous females, Site EA-DW04, 02°58.35'N, 105°40,18'E, Anambas: Pulau Jemaja: Teluk Jebung: northern mangrove inlet, coll. SS, SJ, CIS, 13 Mar.2002; 1 ovigerous female, Site EA-JL03, 02°52'54.4"N, 105°47'38.5"E, Anambas: Pulau Jemaja: Teluk Jebung: northern and eastern mangrove inlets, coll. Joelle, Ben, I-In, coll. Joelle, Ben, I-In, 13 Mar.2002.

Distribution. – Previously reported from Madagascar, Andaman Islands, South China Sea, Ryukyu Islands, Australia. The only Indonesian record is from a brackish pool in Selat Sunda (Dammerman, 1948; Chace & Bruce, 1993).

Remarks. – The specimens agree closely with the original description, but the dactyls of the ambulatory pereopods are longer than in the types. This may be a very common species in the South China Sea and adjacent waters, which is often collected in numbers in suitable locality in this area. The morphological and distributed range of this species should be reviewed carefully, as nobody has checked the types since Kemp (1922).

***Periclimenes attenuatus* Bruce, 1971**
(Figs. 1, 2)

Periclimenes attenuatus Bruce, 1971: 533, figs. 1-5; 1983a: 879; 1983b: 206; 1992: 69, fig. 19; Chace & Bruce, 1993: 103; Müller, 1993: 71; De Grave, 2000: 134; Li, 2000: 159, fig. 196.

Material examined. – 1 ovigerous female, Site EA-D02, 02°57'13.6"N, 105°50'47.4"E, Anambas: Pulau Jemaja: Teluk Tiru, northern edge of bay, near southern tip of Tanjung Linang, fringing coral reef, coll. THH, Adrim, Mantor, Agus, Yusri, Mags, Anjo, Tek, CSC, CIS, 12 Mar.2002.

Measurements (in mm). – CL, 3.1; carapace and rostrum,

4.8; telson, 2.10; eye: stalk, 0.86, cornea, 0.48; first pereiopod: dactyl, 0.32, chela, 0.67, carpus, 1.72, merus, 1.63, ischium, 0.69; left second pereiopod: dactyl, 0.33, chela, 0.90, carpus, 2.99, merus, 2.03, ischium, 1.49; third pereiopod: dactyl, 0.37, propodus, 1.99, carpus, 1.82, merus, 2.24, ischium, 1.05; length of eggs, 0.5-0.6.

Distribution. – Duke of York Islands, Papua New Guinea, and Queensland, Australia; associated with crinoids. Previously reported from Indonesian waters at Seram Island (Bruce, 1983a).

Remarks. – The specimen agree with the original description of *Periclimenes attenuatus* Bruce, 1971, except for the following aspects: rostrum with 4 dorsal teeth and 1 small sub-apical ventral tooth; telson with 2 pairs of dorso-lateral spines located at 0.4 and 0.7 of the telson length respectively. *Periclimenes attenuatus* Bruce, 1971 is a rare species, which has been recorded only from shallow water (not more than 15 m in depth) of Indonesia to Northeast Australia. It may be recorded here for the first time north to the equator.

***Periclimenes grandis* (Stimpson, 1860)**

Anchistia grandis Stimpson, 1860: 39.

Periclimenes (Ancylocaris) grandis - Kemp, 1922: 210, figs. 58, 59, pl. 7: fig. 10.

Periclimenes grandis - Bruce, 1975: 23, fig. 1; Chace & Bruce, 1993: 112; Müller, 1993: 84; Li, 1997: 238; 2000: 186, fig. 235; 2001: 82.

Material examined. – 2 males, 2 females, 4 ovigerous females, Site EA-ZJ09, 04°15.90'N, 108°12.27'E, Natuna: NE coast of Pulau Panjang, NW Pulau Bunguran, 17 Mar.2002.

Distribution. – Wide distribution in Indo-West Pacific, from Red Sea to Mozambique, eastward to Japan, Great Barrier Reef, and Marshall Islands. Previously reported from Indonesian waters at Sumatra, Lesser Sunda Islands (Holthuis, 1952, 1978).

Remarks. – This species is very close to *Periclimenes elegans* (Paulson, 1875) in the *P. grandis* species group sensu Kemp (1922). All the present specimens have only 1 distal spine

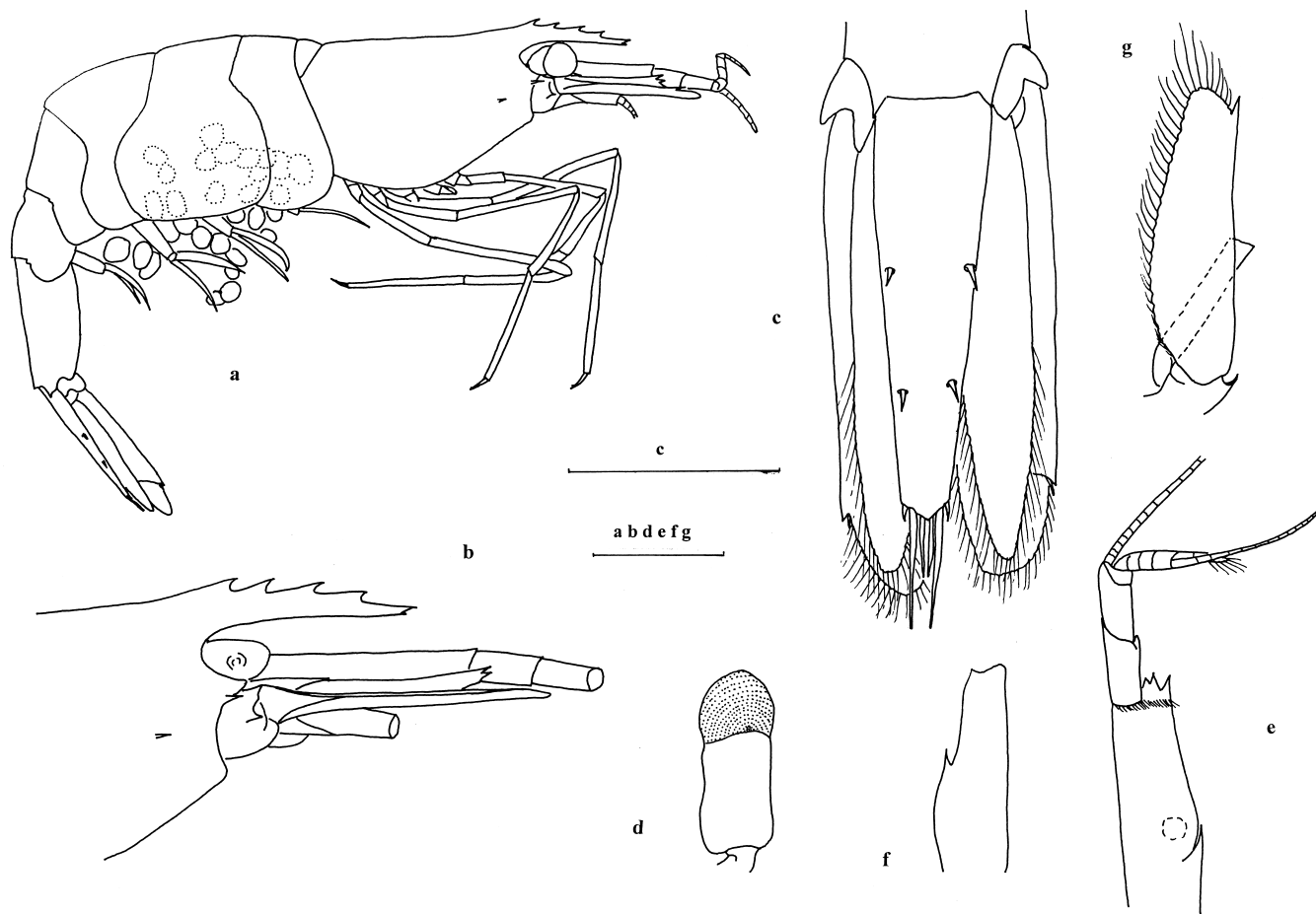


Fig. 1. *Periclimenes attenuatus* Bruce, 1971. a, body, lateral view; b, anterior carapace, lateral view; c, tail-fan, dorsal view; d, right eye, dorsal view; e, right antennula, dorsal view; f, first segment of antennular peduncle, medium view; g, right antenna. Scale = 2 mm (a); 1mm (b-g).

on the carpi of the second pereiopods and the carpi are distinctly shorter than the palms, and their scaphocerites are 4 times as long as wide, identical to *P. grandis*. *P. elegans* has always 2 distal spines on the carpus of the second pereiopod, and the carpus is subequal to the palm, the scaphocerite is relatively narrow, about 4.5 to 5.5 times as long as wide.

ACKNOWLEDGMENTS

Thanks are due to Drs. P. K. L. Ng and Yixiong Cai (Raffles Museum of Biodiversity Research, Singapore), for their kindly sending the samples to me for identification, so that I may investigate these interesting specimens. I am grateful to Dr. Sandy Bruce, for providing much appreciated advice. This study was also supported by the National Natural Science Foundation of China (40276044).

LITERATURE CITED

Bate, C. Spence, 1888. Report of the Crustacea Macrura collected by the *Challenger* during the years 1873-1876. *Report on the Scientific Results of the Voyage of H. M. S. Challenger during the years 1873-1876*, **24**: 1-942, pls 1-157.

Borradaile, L. A., 1898. A revision of the Pontoniidae. *Annals and Magazine of Natural History*, (7)**2**: 376-391.

Borradaile, L. A., 1915. Notes on Carides. *Annals and Magazine of Natural History*, series 8, **15**: 205-213.

Borradaile, L. A., 1917. On the Pontoniinae. The Percy Sladen Trust Expedition to the Indian Ocean in 1905, under the leadership of Mr. J. Stanley Gardiner, M. A., 6(8). *Transactions of the Linnean Society of London*, series 2, **17**(3): 323-396, pls. 52-57.

Bruce, A. J., 1969. Observations upon the host specificity and distribution of *Jocaste japonica* (Ortmann) and *Jocaste lucina* (Nobili) (Decapoda Natantia, Pontoniinae). *Crustaceana*, **17**(3): 298-302, figs. 1-2.

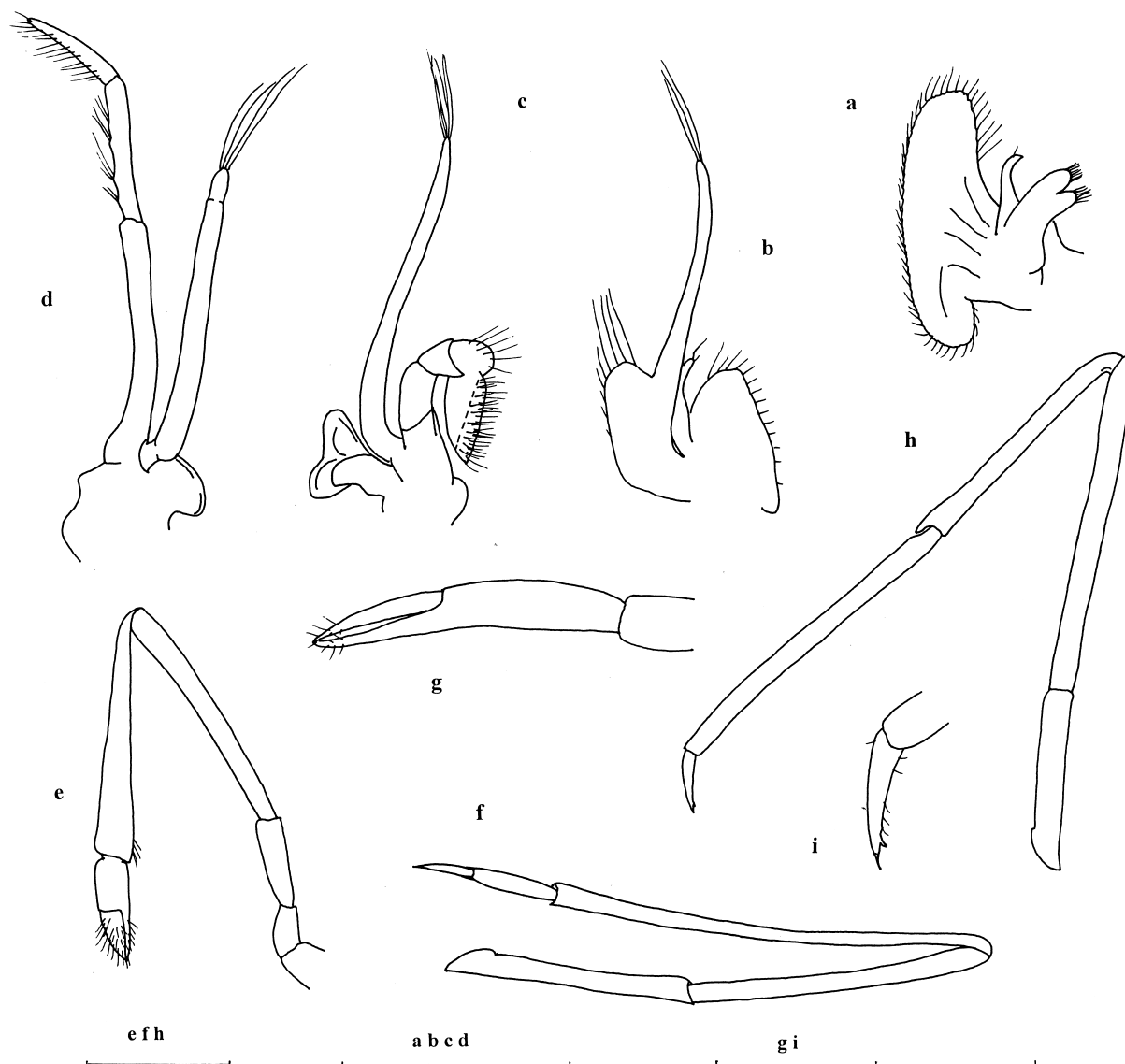


Fig. 2. *Periclimenes attenuatus* Bruce, 1971. a, right second maxilla; b, right first maxilliped; c, right second maxilliped; d, right third maxilliped; e, left first pereiopod; f, left second pereiopod; g, chela of left second pereiopod; h, left third pereiopod; i, dactyl of left third pereiopod. Scale = 1 mm (a-f, h); 0.5 mm (g, i).

- Bruce, A. J., 1970. Observations on the Indo-West Pacific species of the genus *Palaemonella* Dana, 1852 (Decapoda, Pontoniinae). *Crustaceana*, **19**(3): 273-287, figs. 1-7, pl. 1.
- Bruce, A. J., 1971. *Periclimenes attenuatus* sp.nov., (Crustacea, Decapoda, Natantia, Pontoniinae), a new commensal shrimp from the Duke of York Islands. *Pacific Science*, **25**(4): 533-544, figs. 1-5.
- Bruce, A. J., 1972. Notes on some Indo-Pacific Pontoniinae. XX. *Pontonia sibogae* sp. nov., a new species of *Pontonia* from western Australia and Indonesia (Decapoda Natantia, Palaemonidae). *Crustaceana*, **23**(2): 182-186, fig. 1.
- Bruce, A. J., 1975. Coral reef shrimps and their colour patterns. *Endeavour*, **34**(121): 23-27, figs. 1-16.
- Bruce, A. J., 1977a. Pontoniine Shrimps I the Collections of the Australian Museum. *Records of the Australian Museum*, **31**(2): 39-81, figs. 1-16.
- Bruce, A. J., 1977b. Some *Periclimenes* species from Madagascar (Decapoda Caridea). Notes on some Indo-Pacific Pontoniinae, XXX. *Crustaceana*, **33**(3): 265-274, figs. 1-5.
- Bruce, A. J., 1978. A Report on a Collection of Pontoniine Shrimps from Madagascar and Adjacent Seas. *Zoological Journal of the Linnean Society*, **62**: 205-290, figs. 1-44.
- Bruce, A. J., 1979. Records of some pontoniine shrimps from the South China Sea. *Cahiers de l'Indo-Pacifique*, **1**(2): 215-248.
- Bruce, A. J., 1982. The pontoniine shrimp fauna of Hong Kong. *Proceedings of the First International Marine Biological Workshop: The Marine Flora and Fauna of Hong Kong and Southern China, Hong Kong, 1980*: 233-284, figs. 1-26.
- Bruce, A. J., 1983a. Expédition Rumphius 11 (1975). Crustacés parasites, commensaux, etc. (Th. Monod ed.) IX. Crustacés Décapodes (1:Natantia Pontoniinae). *Bulletin du Muséum National d'Histoire Naturelle, Paris*, (4)**5** A3: 871-902, figs. 1-10.
- Bruce, A. J., 1983b. The pontoniine shrimps fauna of Australia. *Memoirs of the Australian Museum*, **18**: 195-218.
- Bruce, A. J., 1984. *Periclimenes dentidactylus*, a new deep water pontoniine shrimp from Makassar Strait, Indonesia. *Marine Research in Indonesia*, **24**: 7-17, figs. 1-6.
- Bruce, A. J., 1991. Shallow-water Palaemonoid shrimps from New Caledonia (Crustacea: Decapoda). In: Richer de Forges, B., (ed.), *Le benthos des fonds meubles des lagons de Nouvelle-Calédonie*, 1. *Études et Thèses; Paris, ORSTOM*: 211-279, figs. 1-31.
- Bruce, A. J., 1992. Two New Species of *Periclimenes* Crustacea: Decapoda: Palaemonidae) from Lizard Island, Queensland, with Notes on Some Related Taxa. *Records of the Australian Museum*, **44**: 45-84, figs. 1-27.
- Bruce, A. J., 2002. Notes on some Indo-Pacific Pontoniinae, XLVI. *Palaemonella foresti* sp. nov., a new pontoniine shrimp from Western Australia (Decapoda, Palaemonidae), with a review of the Indo-West Pacific species of the genus *Palaemonella* Dana, 1852. *Crustaceana*, **75**(3-4): 277-298, figs. 1-4.
- Bruce, A. J. & K. E. Coombes, 1995. The palaemonoid shrimp fauna (Crustacea: Decapoda: Caridea) of the Cobourg Peninsula, Northern Territory. *The Beagle, Occasional Papers of the Northern Territory, Museum of Arts and Sciences*, **12**: 101-144, figs. 1-12.
- Chace, F. A., Jr. & A. J. Bruce, 1993. The caridean shrimps (Crustacea: Decapoda) of the *Albatross* Philippine Expedition 1907-1910, Part 6: Superfamily Palaemonoidea. *Smithsonian Contributions to Zoology*, **543**: 152 pp., 23 figs.
- Dammerman, K. W., 1948. The Fauna of Krakatau 1883-1933. *Verhandelingen Koninklijke Nederlandsche Akademie van Wetenschappen*, section 2, **44**: 1-594, figs. 1-46, pls. 1-11.
- De Grave, S., 1999. Pontoniinae (Crustacea: Decapoda: Palaemonidae) associated with bivalve mollusks from Hansa Bay, Papua New Guinea. *Bulletin de l'Institut Royal des Sciences Naturelles de Belgique, Biologie*, **69**: 125-141.
- De Grave, S., 2000. Caridean shrimps (Crustacea, Decapoda) from Hansa Bay, Papua New Guinea: Palaemonidae and Gnathophyllidae. *Bulletin de l'Institut Royal des Sciences Naturelles de Belgique, Biologie*, **70**: 119-148.
- De Man, J. G., 1888. Report on the podophthalmous Crustacea of the Mergui Archipelago collected for the Trustees of Indian Museum Calcutta by John Anderson F. R. S. Superintendent of the Museum. *Journal of the Linnean Society of London, Zoology*, **22**: 1-312. pls. 1-19.
- Fransen, C. H. J. M., 1989. Notes on caridean shrimps collected during the Snellius-II Expedition, I: Associates of Anthozoa. *Netherlands Journal of Sea Research*, **23**(2): 131-147, fig. 1-9.
- Fransen, C. H. J. M., 1994. Marine palaemonoid shrimps of the Netherlands Seychelles Expedition 1992-1993. *Zoologische Verhandelingen, Leiden*, **297**: 85-152, figs. 1-112, pls. 1-4.
- Holthuis, L. B., 1952. The Decapoda of the Siboga Expedition, Part XI: The Palaemonidae collected by the Siboga and Snellius Expeditions, with remarks on other species, part II: Subfamily Pontoniinae. *Siboga-Expeditie*, **39a**(10): 254 pp., 110 figs.
- Holthuis, L. B., 1978. A Collection of Decapoda Crustacea From Sumba, Lesser Sunda Islands, Indonesia. *Zoologische Verhandelingen, Leiden*, **162**: 1-55, figs. 1-14.
- Kemp, S., 1922. Notes on Crustacea Decapoda in the Indian Museum, XV: Pontoniinae. *Records of the Indian Museum*, **24**(2): 113-288, figs. 1-105, pls. 3-9.
- Kubo, I., 1940. Studies on Japanese Palaemonoid Shrimps. II. Pontoniinae. *Journal of the Imperial Fisheries Institute, Tokyo*, **34**: 31-75, figs. 1-36.
- Li, X., 1996. The pontoniinid shrimps from Nansha Islands, China. I. *Studies on Marine Fauna and Flora and Biogeography of the Nansha Islands and Neighbouring waters*, **2**: 222-233, figs. 1-9. (in Chinese)
- Li, X., 1997. Report on Gnathophyllidae and Pontoniinae (Decapoda, Palaemonoidea) shrimps from the Xisha Islands and adjacent waters, South China Sea. *Studia Marina Sinica*, **38**: 223-251, figs. 1-12.
- Li, X., 2000. *Catalog of the Genera and Species of Pontoniinae Kingsley, 1878*, i-iv, 1-319, figs 1-407. Beijing: Xueyuan Press.
- Li, X., 2001. On some pontoniine shrimps (Crustacea: Caridea) from Hainan Island, South China Sea. In: Matsuura (ed.) *Marine Fauna of the Shallow Waters around Hainan Island, South China Sea, National Science Museum Monographs*, **21**: 75-86.
- Müller, H.-G., 1993. *Catalogue of the Indo-Pacific Pontoniine Shrimps*. Germany: Wetzlar. Pp. 1-159.
- Nobili, G., 1901. Decapodi e Stomatopodi Eritrei del Museo Zoologico dell'Università di Napoli. *Annuario del Museo Zoologico della R. Università di Napoli*, new series, **1**(3): 1-20.
- Ortmann, A., 1890. Die Unterordnung Natantia Boas: Die Decapoden-Krebse des Strassburger Museums, mit besonderer Berücksichtigung der von Herrn Dr. Döderlein bei Japan und bei den Liu-Kiu-Inseln gesammelten und z. Z. Im Strassburger Museum aufbewahrten Formen, I. *Zoologische Jahrbücher Abtheilung für Systematik, Geographie und Biologie der Thiere*, **5**: 437-542, pl. 36-37.

Li: Pontoniine shrimps from the Anambas Islands

- Patton, W. K., 1966. Decapod Crustacea commensal with Queensland branching corals. *Crustaceana*, **10**(3): 271-295, figs. 1-3.
- Paulson, O., 1875. *Investigations on the Crustacea of the Red Sea with Notes on Crustacea of the adjacent Seas. Part I. Podophthalmata and Edriophthalmata (Cumacea)*, pp. i-xiv, 1-144, pls. 1-21. Ukraine: Kiev.
- Peters, W., 1852. *Conchodytes*, eine neue in Muscheln lebende Gattung von Garneelen. *Berichte über die zur Bekanntmachung geeigneten Verhandlungen der K. Preuss. Akademie der Wissenschaften zu Berlin*, **1852**: 588-595.
- Potts, F. A., 1915. The fauna associated with the crinoids of a tropical coral reef: with especial reference to its colour variation. *Papers from the Department of Marine Biology of the Carnegie Institute of Washington*, **8**(3): 71-96, figs. 1-7, pl. 1.
- Rumphius, G. E., 1705. *D'Amboinische Rariteitkamer, behelzende eene Beschryving van allerhande zooweeke als harde Schaalvisschen, te weeten raare Krabben, Kreeften en diergelyke Zeedieren, als mede allerhande Hoortjes en Schulpen, die men in d'Amboinische Zee vindt: daar beneven zommige Mineraalen, Gesteenten en soorten van Aarde, die in d'Amboinsche, en zommige omleggende Eilanden gevondern worden*, 1-340, pls. 1-60.
- Stimpson, W., 1860. Crustacea Macrura. Pars VIII of Prodrômus descriptionis animalium evertibratorum, quae in Expeditione ad Oceanum Pacificum Septentrionalem, a Republica Federata missa, Cadwaladaro Ringgold et Johanne Rodgers Ducibus, observavit et descripsit. *Proceedings of the Academy of Natural Sciences of Philadelphia*, (**1860**): 22-47.