

Figure 10. *Procaris ascensionis*. A. Gastric mill; note large median tooth (mt) and developed lateral teeth (lt); X50. B. Lateral view of gastric mill; X100. C. Close-up of median tooth (mt); X240. D. Details of lateral tooth; X200. E. Morphology of roof of cardiac chamber; X2000. F. Details of entrance to gland filter (gf); note denticles at (d); X765.

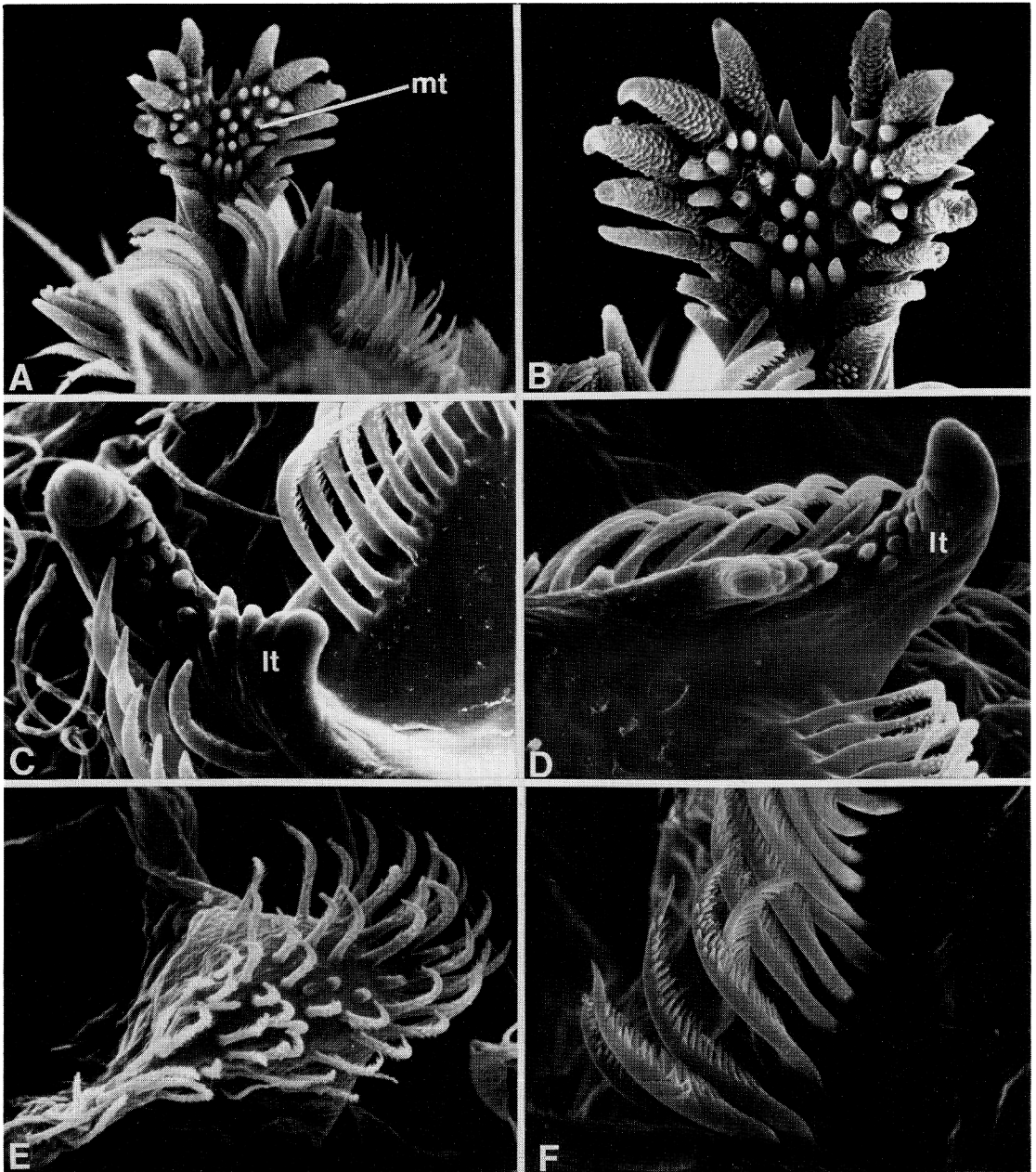


Figure 11. *Leptocheila bermudensis*. A. Median tooth (mt) within cardiac chamber; X550. B. Close-up of median tooth; X2000. C and D. Robust lateral teeth; X1025. E. Serrate setae which surround median tooth (see Figure A); X1000.

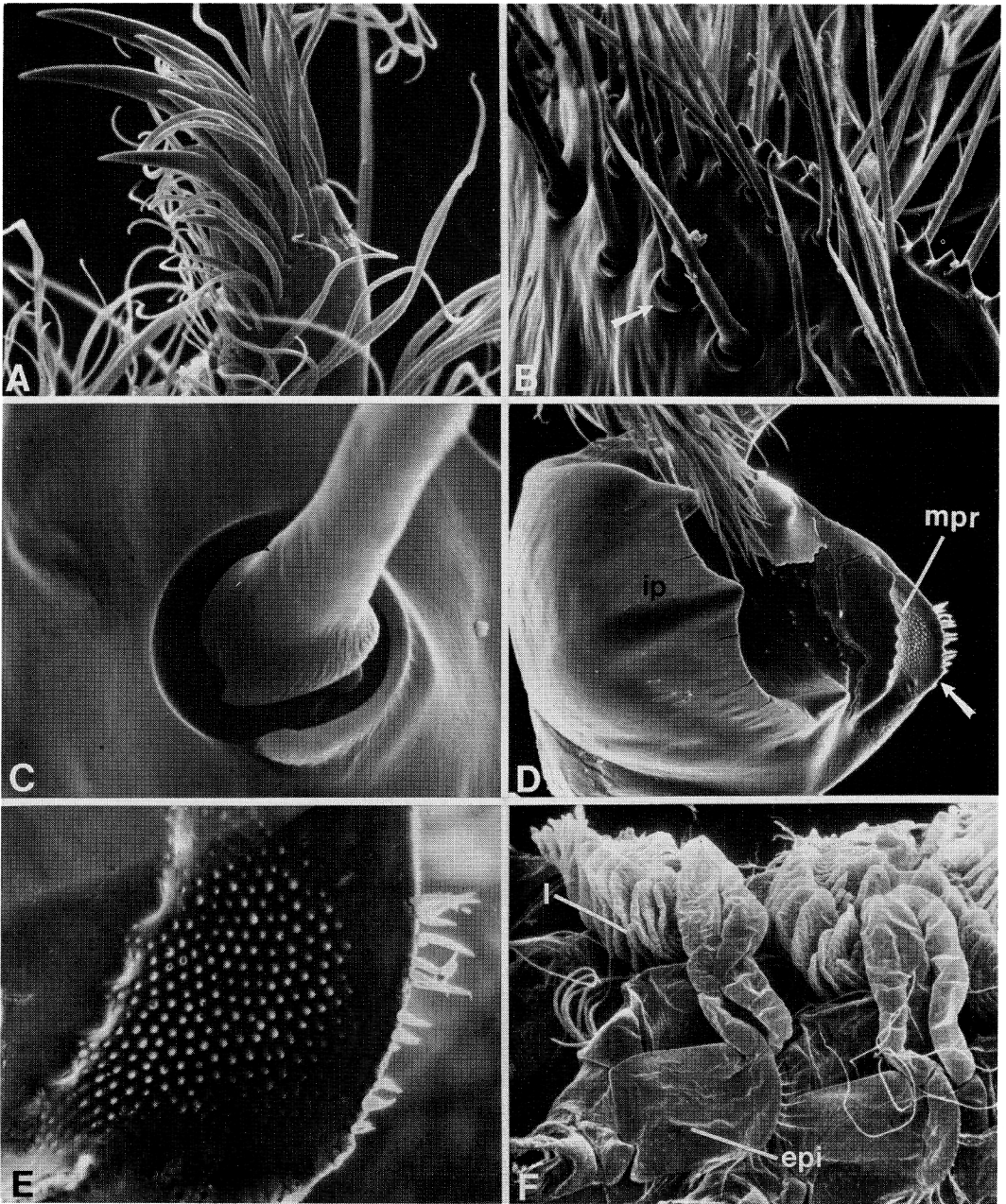


Figure 12. *Procaris ascensionis*. A. Second pereopod; X250. B. Third maxilliped (ischium); note the large movable setae (arrow) and gnathobasic-like projections medially (arrow); X1225. C. Enlargement of movable setae shown in B; X2000. D. Mandible; arrow indicates the reduced molar process; X75. E. Close-up of molar process; X280. F. Phyllobranch gills; note massive epipods (epi); X50.