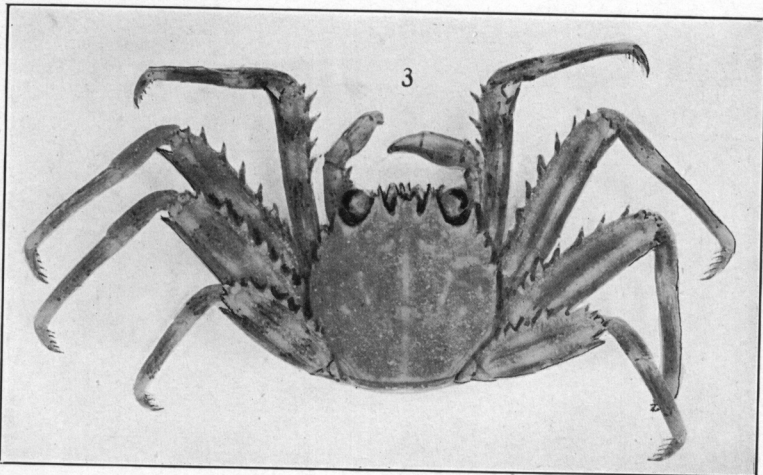
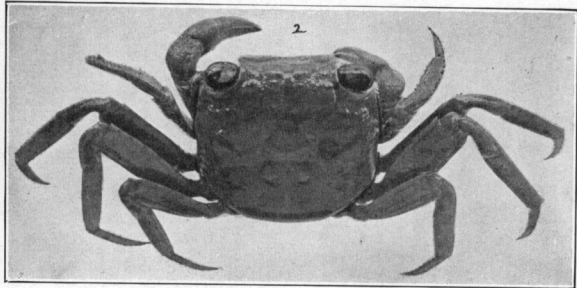
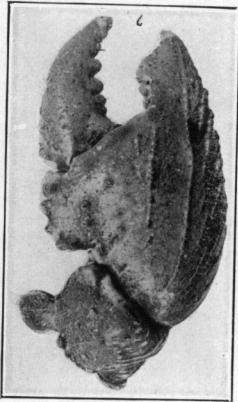
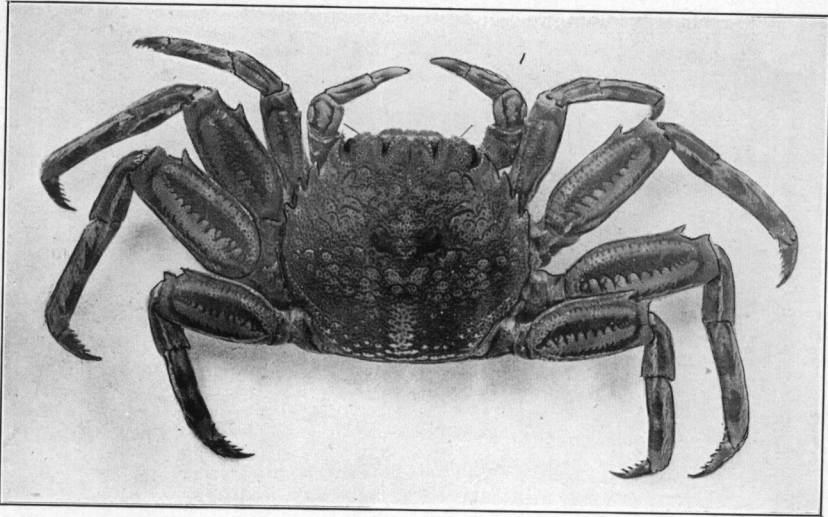


A. H. Verrill, Phot.

Stoddard & Brown, eng.

BERMUDA CRUSTACEA.

1. Land Crab, *Cardisoma guanhumii* ; 2, 3. Beach Crab, *Ocypode arenarius*.

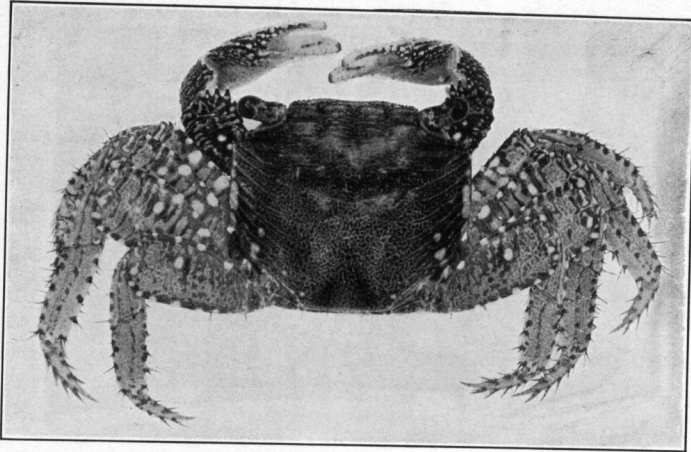


A. H. Verrill, phot.

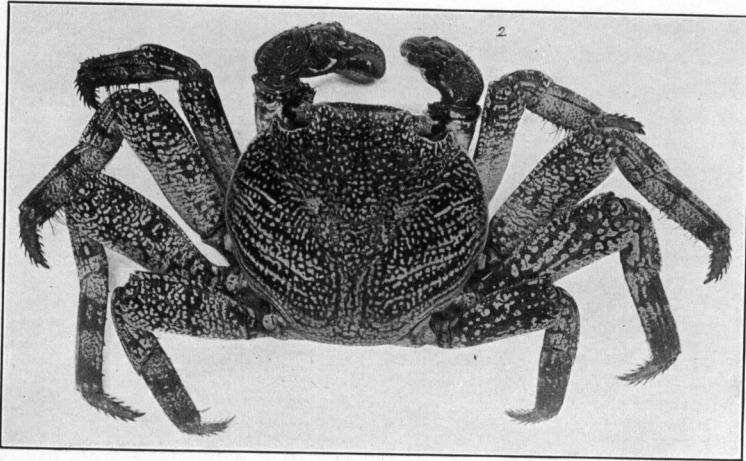
Stoddard & Brown, eng.

1. Cliff Crab, *Plagusia depressa*; 2. *Sesarma Ricordi*; 3. *Percnon planissimum*; 6. *Grapsus grapsus*.

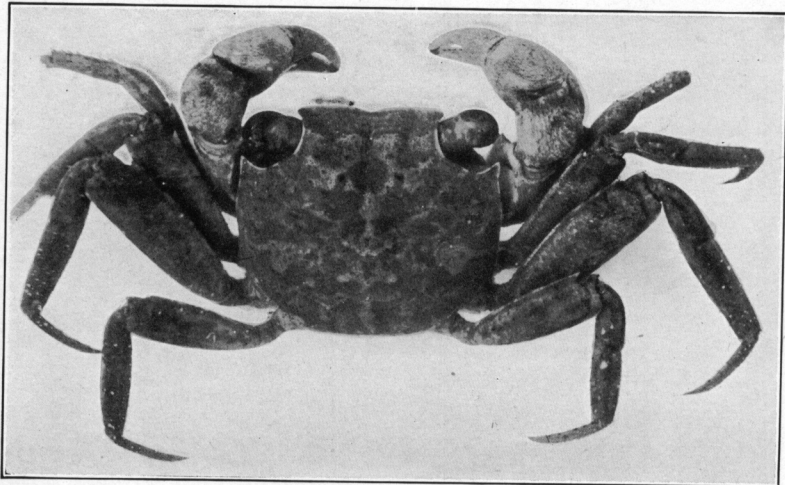
1



2



3



1. *Goniopsis cruentatus*; 2. *Grapsus grapsus*; 3. *Sesarma Ricordi*, var. *terrestris*, nov.