

## EXPLANATION OF PLATES.

*The plates are numbered consecutively to those of "South African Crustacea," Part I.)*

## PLATE 5.

## PLATYMAIA TURBYNEL, n. sp.

A. n.s. Dorsal view of a specimen, natural size. Fourth trunk-limb missing on the right side, and two terminal joints of the third limb on the left.

B. oc., a.s, a.i., pal. Underside of head of another specimen showing eyes, first and second antennæ, epistome, and part of palatal floor. Magnified.

B. car. Carapace of second specimen in lateral view, left side a little raised, natural size.

B. Pl. Sternal plastron and pleon of the second specimen, natural size.

## PLATE 6.

## SCYRAMATHIA HERTWIGI, Doflein.

Dorsal view of a male specimen, life size, without the right cheliped and three following feet.

C.V. Cephalon in ventral view, showing the two pairs of antennæ and one member of the third maxillipeds in situ, natural size.

Pl. Dorsal view of pleon, natural size.

a.s. First antenna.

m. Mandible.

mx. 1, mx. 2. First and second maxillæ.

mxp. 1, 2, 3. First, second, and third maxillipeds.

Ch. Right cheliped, natural size.

The separate figures of first antenna and mouth organs are magnified two diameters.

## PLATE 7.

## JASUS PARKERI, n. sp.

Dorsal view of specimen, natural size, with second antennæ truncated not far above the peduncles.

## PLATE 8.

## CALLIANASSA ROTUNDICAUDA, n. sp.

n.s. Natural size of specimen, lateral view; beneath it is a dorsal view of the same specimen magnified two diameters.

a.s., a.i. First antenna, with basal joint covered by the eye; peduncle of the second antenna.

m. Mandible.

l.i. Lower lip.

mx. 1, mx. 2. First and second maxillæ.

m xp. 1, 2, 3. First, second, and third maxillipeds.

prp. 1-5. First to fifth peræopods. The larger cheliped from the right side of the specimen is on the left side of the plate, with the outer surface shown. The smaller companion cheliped is on the right side of the plate.

plp. A pleopod.

plp. r. Retinaculum of the pleopod greatly magnified, with one of the marginal setæ.

T., urp. Telson and uropods attached to their segment.

The detached antennæ and limbs of peræon and pleon are all magnified to the same scale. The mouth organs are magnified to a scale double of the preceding.

## PLATE 9.

## CIROLANA VENUSTICAUDA, n.sp.

n.s. Natural size of the specimen which is shown in dorsal view.

T., urp. Dorsal view more highly magnified, from another specimen, extending from sixth segment of peræon to end of telsonic segment and the uropods.

Pl. L. Lateral view of pleon.

a.s., a.i. First and second antennæ; distal joints of first more highly magnified.

l.s. Upper lip, with epistome and frontal lamina.

m. Mandible from the inner (upper) side; with the cutting edge, accessory plate, and equivalent of molar, more highly magnified.

mx 1, mx. 2, m xp. First and second maxillæ and maxilliped; with spines and setæ of first maxilla more highly magnified.

gn. 1, gn. 2. First and second gnathopods.

prp. 4. Fourth peræopod.

The mouth organs are magnified to a higher scale than the other appendages.

## PLATE 10.

## GLYPTIDOTEA LICHTENSTEINII (Krauss).

n.s. Line showing natural size (length) of specimen figured at the top of the plate in dorsal view.

a.s., a.i. First and second antennæ, with flagellum of first more highly magnified.

l.s. Upper lip, surmounted by the epistome.

g. Part of stomach, showing the cardiac folds above and the ventral fold below.

m.m. Mandibles, viewed from the inner side: with cutting plates, spine-row, and molar, more highly magnified.

mx. 1., mx. 2. First and second maxillæ; with spines of the first more highly magnified, as seen from the outer and inner sides.

mxp. One of the maxillipeds.

gn. 1, gn. 2, prp. 5. First and second gnathopods and fifth peræopod. A grasping spine and one of the surface spines of the first gnathopod more highly magnified.

urp. One of the uropods.

Whole specimen enlarged two diameters; antennæ, limbs, and uropod drawn under three-inch objective, mouth organs under two-inch, and more magnified details under one-inch.

## PLATE 11.

## EXOSPHEROMA AMPLIFRONS, n. sp.

n.s. Natural size of specimen, of which lateral view is given.

C. Head seen from front, with epistome flanked by basal joint of first antennæ, and mandibles showing below.

Pl. Dorsal view of pleon.

or. p. Oris partes, ventral view of mouth-parts in position, flanked by lateral parts of head and first peræon-segment.

a.s., a.i. First and second antennæ; the first seen from outer side.

l.s. Upper lip, surmounted by epistome attached to part of head.

l.i. Lower lip.

m.m. Mandibles from inner surface.

mx. 1. First maxilla.

mxp. Maxillipeds.

gn. 1. First gnathoped.

prp. 5. Fifth peræopod.

## PLATE 12A.

## EXOSPHAEROMA VALIDUM, n. sp.

n.s. Natural size of specimen represented in the adjoining figure, nearly full dorsal view.

C. Pr. s. 1. Front view of head and first peræon segment. The first antennæ, epistome, upper lip, and mandibles are shown in situ.

a.s., a.i. First and second antennæ; the first seen from inner side.

l.s., li. Upper lip and epistome in attachment to margin of head, and lower lip.

m.x.p. Maxillipeds.

gn. 1. First gnathopod.

## PLATE 12B.

## EXOSPHAEROMA SETULOSUM, n. sp.

n.s. Length of specimen in partially bent position, as shown in lateral view.

C. Front view of head, with basal joint of first antennæ in situ.

Pl. Dorsal view of pleon.

a.s., a.i. First and second antennæ; the first seen from inner side.

l.s. Upper lip and epistome.

m.x.p. Maxillipeds.

## PLATE 13.

## PARASPHAEROMA PROMINENS, n. g. et sp.

n.s. Natural size of specimen in dorsal view at top of plate.

a.s., a.i. First and second antennæ.

ep., l.s. Epistome and upper lip.

mx. 1, mx. 2. First and second maxillæ.

m.x.p. Maxilliped.

gn. 1, gn. 2. First and second gnathopods.

prp. 1, 5. First and fifth peræopods.

plp. 2, 5. Second and fifth pleopods.

The separate appendages magnified to the same scale, about twelve and a half diameters.

## PLATE 14.

## CYMODOCE UNCINATA, n. sp.

n.s. Natural size of specimen in lateral view at top of plate.

Pl. D. Dorsal view of pleon, magnified three diameters.  
 Pl. L. Lateral view of pleon, much more magnified.  
 a.s., a.i. First and second antennæ.  
 ep., l.s. Epistome and upper lip.  
 mx. 1, mx. 2. First and second maxillæ.  
 mxp. Maxilliped.  
 gn. 1. First gnathopod.  
 prp. 5. Fifth peræopod.  
 pen. Male organs from seventh segment of peræon.  
 plp. 2, 3, 5. Second, third, and fifth pleopods.  
 The separate appendages all drawn to the same scale, magnified about twelve and a half diameters.

## PLATE 15A.

## CROSSOPHORUS AFRICANUS.

app. v. and c. 1. Hind portion of a specimen with eggs, in lateral view, showing the vermiform appendage directed upward, the caudal lamina pointing downward, and above this on the right the two genital tubercles.

ov. 1. Large egg, in lateral and dorsal view, from small specimen.

a.i. Second antenna from the large egg.

ov. 2. Egg from a large specimen which was infested with well-developed female and larvæ of *Cyproniscus*.

cr. Crystals forming flattened layers within the valves of a large ovigerous female; many of the crystals carrying setules and plumose setæ evidently stripped from the organs of the Ostracode.

All the above are much magnified representations.

## PLATE 15B.

## CYPRONISCUS CROSSOPHORI.

n.s. Natural size of the larva, figured in dorsal view at the middle of the plate, and also natural size of the developed female, figured on the left hand below, much less highly magnified, with a larva beside it to the same scale.

C.V. Cephalon of larva in ventral view.

a.s., a.i. First and second antennæ.

gn. 2. Second gnathopod, in attachment to its segment, with ventral view of first segment and part of third.

prp. 5. Fifth peræopod.

plp. 1. First pleopod.

T. urp. Telsonic segment in dorsal view, with the uropods.

## PLATE 16.

## CROSSOPHORUS AFRICANUS.

- n.s. Natural size of a specimen, left side.  
a.s., a.i. First and second antennæ.  
m. Mandible.  
mx. 1. mx. 2. First and second maxillæ.  
mxp. Maxilliped.  
app. v. Vermiform appendage.  
c.l. Caudal lamina.

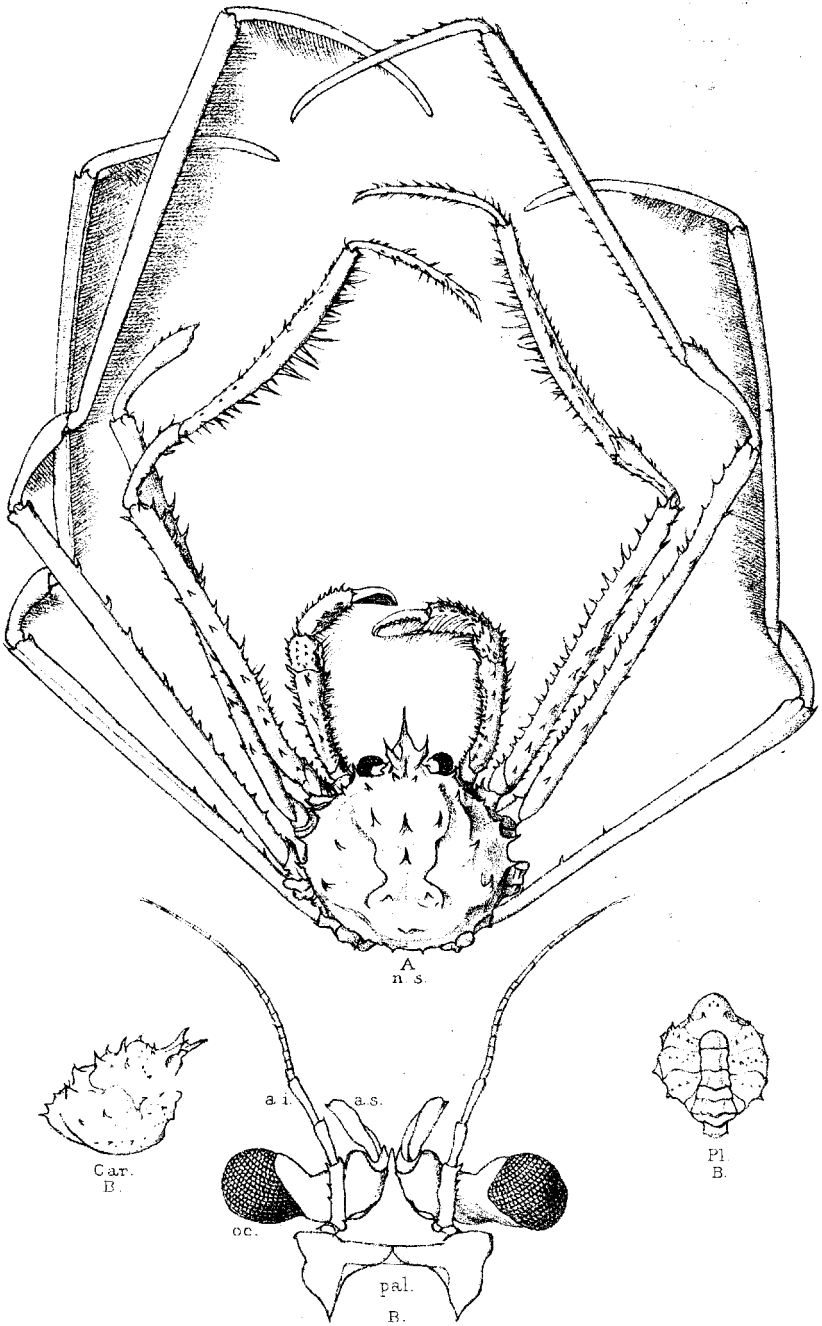


## INDEX.

	PAGE.		PAGE.
<i>Acherusia</i> .. ..	53	<i>Cyproniscus</i> .. ..	75
<i>Ægeon</i> .. ..	83	<i>darwini</i> ( <i>Cymodocea</i> ) ..	70
<i>Ægidae</i> .. ..	53	<i>dehaanii</i> ( <i>Porcellana</i> ) ..	28
<i>africanus</i> ( <i>Crossophorus</i> ), Plates		<i>Diptychus</i> .. ..	31, 32
15a, 16 .. ..	79	<i>Diptychina</i> .. ..	31
<i>alata</i> ( <i>Ctenomysis</i> ) .. ..	43	<i>Dromia</i> .. ..	18
<i>amplifrons</i> ( <i>Exosphaeroma</i> ), Plate		<i>Dromiacea</i> .. ..	18
II .. ..	64	<i>Dromiidae</i> .. ..	19
<i>Anamathia</i> .. ..	5	<i>Dumerilii</i> ( <i>Acherusia</i> ) ..	53
<i>angulata</i> ( <i>Goneplax</i> ) .. ..	15	<i>Dumerilii</i> ( <i>Rocinela</i> ) ..	53
<i>Anisopus</i> .. ..	12	<i>Duwaucelii</i> ( <i>Erichthus</i> ) ..	46
<i>Anomala</i> ( <i>Brachyura</i> ) .. ..	18	<i>Edotia</i> .. ..	60
<i>Anomala</i> ( <i>Isopoda</i> ) .. ..	48	<i>edwardsii</i> ( <i>Palinurus</i> ) ..	38
<i>Anomala</i> ( <i>Macrura</i> ) .. ..	27	<i>elegans</i> ( <i>Latrellia</i> ) .. ..	24
<i>Apsudes</i> .. ..	48	<i>Entomostraca</i> .. ..	77
<i>Apsuedidae</i> .. ..	48	<i>Erichthus</i> .. ..	46
<i>arenarius</i> ( <i>Cancer Mantis</i> ) ..	47	<i>Eryonidae</i> .. ..	35
<i>armata</i> ( <i>Squilla</i> ) .. ..	45	<i>Eryontidae</i> .. ..	35
<i>artificiosa</i> ( <i>Dromia</i> ) .. ..	19	<i>Exosphaeroma</i> .. ..	64
<i>artificiosus</i> ( <i>Conchœcetes</i> ) ..	20	<i>fluviatilis</i> ( <i>Cirolana</i> ) ..	52
<i>Astacus</i> .. ..	83	<i>frontalis</i> ( <i>Palinurus</i> ) ..	38
<i>atlantica</i> ( <i>Nephropsis</i> ) .. ..	34	<i>Galatheidae</i> .. ..	29
<i>balthica</i> ( <i>Idotea</i> ) .. ..	56, 63	<i>genuina</i> ( <i>Brachyura</i> ) .. ..	2
<i>barbata</i> ( <i>Homola</i> ) .. ..	22	<i>genuina</i> ( <i>Isopoda</i> ) .. ..	49
<i>bipustulatus</i> ( <i>Platyonichus</i> ) ..	13	<i>genuina</i> ( <i>Macrura</i> ) .. ..	33
<i>Brachyura anomala</i> .. ..	18	<i>Genypterus</i> .. ..	83
<i>Brachyura genuina</i> .. ..	2	<i>gigas</i> ( <i>Exosphaeroma</i> ) ..	69
<i>Callianassa</i> .. ..	41	<i>Glyptidotea</i> .. ..	56
<i>Callianassidae</i> .. ..	41	<i>Glypturus</i> .. ..	41
<i>Callichirus</i> .. ..	41	<i>Goneplacidae</i> .. ..	15
<i>capensis</i> ( <i>Genypterus</i> ) .. ..	83	<i>Goneplax</i> .. ..	15
<i>Catometopa</i> .. ..	14	<i>Goniosoma</i> .. ..	9
<i>cephalotes</i> ( <i>Neroclla</i> ) .. ..	55	<i>Gonoplax</i> .. ..	15
<i>Charybdis</i> .. ..	9	<i>grossimanus</i> ( <i>Apsudes</i> ) ..	48
<i>Chirostylidae</i> .. ..	31	<i>hertwigi</i> ( <i>Scyramathia</i> ), Plate 6	7
<i>Cirolana</i> .. ..	49	<i>hirtipes</i> ( <i>Edotia</i> ) .. ..	60
<i>Cirolanidae</i> .. ..	49	<i>hirtipes</i> ( <i>Idotea</i> ) .. ..	60
<i>Colidotea</i> .. ..	56, 62	<i>hirtipes</i> ( <i>Synidotea</i> ) ..	60
<i>complanata</i> ( <i>Acherusia</i> ) .. ..	53	<i>Homola</i> .. ..	21
<i>Conchœcetes</i> .. ..	19	<i>Homolidae</i> .. ..	20
<i>concolor</i> ( <i>Uroptychus</i> , var.) ..	32	<i>Idotea</i> .. ..	62
<i>crossophori</i> ( <i>Cyproniscus</i> ), Plate 15b		<i>Idoteidae</i> .. ..	55
<i>Crossophorus</i> .. ..	77	<i>imperator</i> ( <i>Crossophorus</i> ) ..	78
<i>crucifatus</i> ( <i>Charybdis</i> ) .. ..	9	<i>imperialis</i> ( <i>Crossophorus</i> ) ..	79
<i>cruciferum</i> ( <i>Goniosoma</i> ) .. ..	10	<i>indica</i> ( <i>Idotea</i> ) .. ..	62
<i>Cryptothiria</i> .. ..	75	<i>Isopoda anomala</i> .. ..	48
<i>Ctenomysis</i> .. ..	43	<i>Isopoda genuina</i> .. ..	49
<i>Cyclometopa</i> .. ..	8	<i>Jasus</i> .. ..	38
<i>Cymodoce</i> .. ..	73	<i>King klip-fish</i> .. ..	83
<i>Cymothoidae</i> .. ..	54	<i>lalandii</i> ( <i>Jasus</i> ) .. ..	38
<i>Cypridinidae</i> .. ..	77	<i>lalandii</i> ( <i>Palinostus</i> ) ..	38
<i>Cyproniscidae</i> .. ..	74	<i>lalandii</i> ( <i>Palinurus</i> ) ..	38



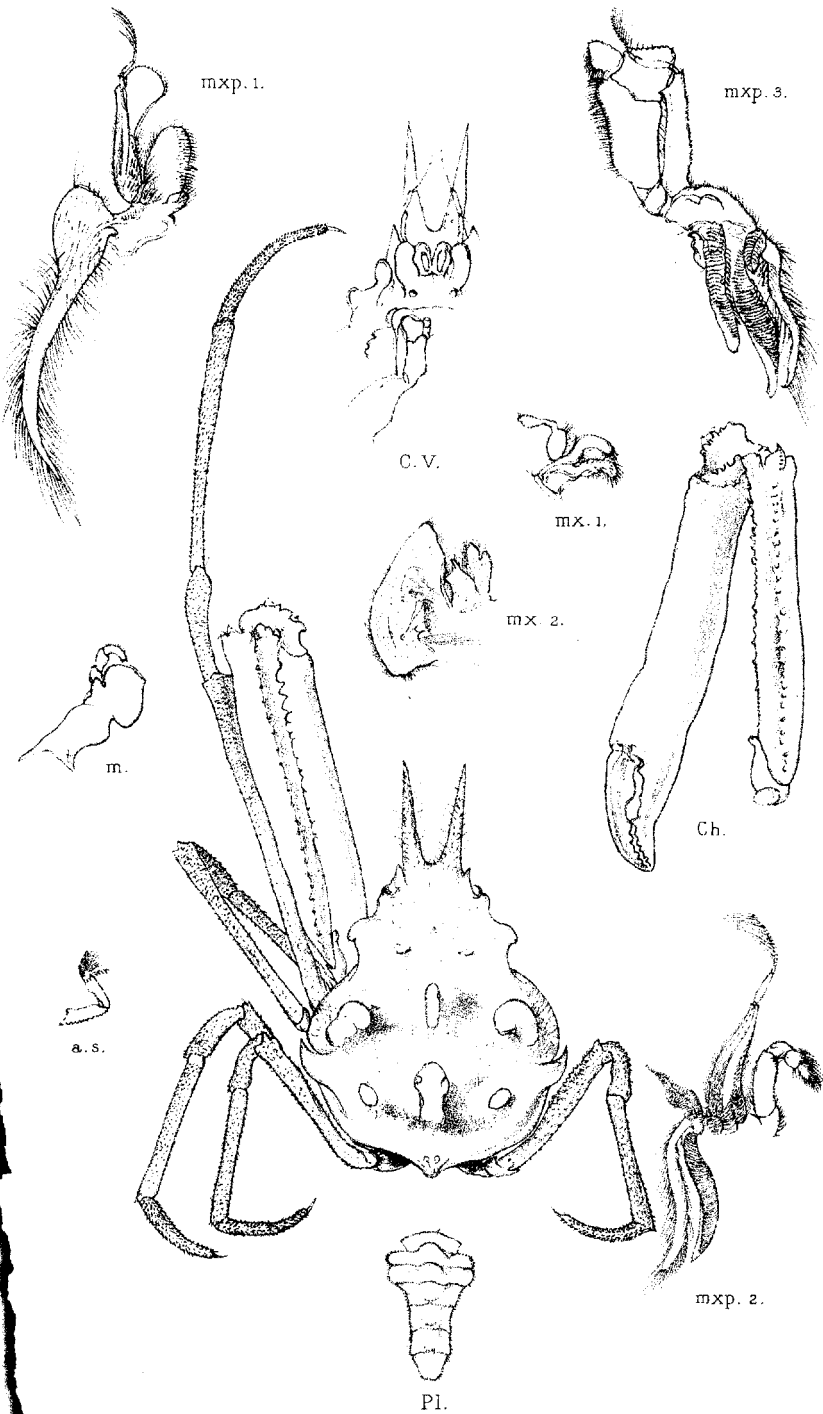
	PAGE.		PAGE.
lanceolatum (Exosphaeroma)	69	Polycheles	35
Latreillea	24	Porcellana	28
Latreillia	23	Porcellanidæ	27
latreillii (Idotea)	62	Portunidæ	8
Latreilliidæ	23	prominens (Parasphaeroma), Plate 15	70
Leucosiidæ	17	punctata (Philyra)	17
Leucosoidæ	16	punctatus (Platyonichus)	13, 14
lichtensteini (Glyptidotea), Plate 10	57	Raninidæ	2, 16, 27
lichtensteini (Idotea)	57	rhomboides (Goneplan)	16
Linuparis	83	Rocinela	53
Linuparus	38, 83	rotundicaudata (Callianassa), Plate 8	41
Lophogaster	43	sancti-pauli (Munida)	30
Lophogastridæ	43	sanguinolenta (Lupa)	11
Lupa	11	Schizopoda	43
Lysierichthus	46	sculpta (Cirolana)	49
Lysioerichthus	46	sculptus (Pentacheles)	36
Lysiosquilla	46	sculptus (Polycheles)	36
Macrura anomala	27	Scyra	6
Macrura genuina	33	Scyramathia	5
maculata (Lysiosquilla)	46	setulosum (Exosphaeroma), Plate 12b	68
maculata (Squilla)	46	sexdentatus (Cancer)	10
Maiidæ	2	Sphæsomidæ	64
militaris (Munida)	30	Sphyrion	83
Munida	29	spinifrons (Cancer)	23
Myodocopa	77	spinifrons (Homola)	22
Nephropsidæ	33	Squilla	45
Nephropsis	33	Squillidæ	44
Neptunus	11	Stereomastis	36
Nerocila	55	Stomapoda	44
nitidus (Nptychus)	32	Stomatopoda	44
nitidus (Uroptychus)	32	streptocheles (Porcellana)	28
nitidus var. concolor (Diptychus)	32	sulcata (Cirolana)	53
Ostracoda	77	Synidotea	56, 59
Ovalipes	12	Thelxiope	22
Oxyrrhyncha	2	trimaculatus (Anisopus)	13
Oxystomata	16	trimaculatus (Ovalipes)	13
Palinostus	38	turbynei (Platymaia), Plate 5	3
Palinosytus	38	typicus (Lophogaster)	43
Palinuridæ	37	umbonata (Scyra)	6
Palinurus	37	uncinata (Cymodoce), Plate 14	73
Parasphaeroma	70	ungulata (Paridotea)	83
Paridotea	56, 83	Uroptychidæ	31
parkeri (Jasus) Plate 7	39	Uroptychus	32
paulensis (Palinurus)	38	valida (Latreillia)	24
pennifera (Latreillia)	24, 26	validum (Exosphaeroma), Plate 12a	67
Pentacheles	36	venusticauda (Cirolana), Plate 9	49
Philyra	17	wyville-thomsoni (Platymaia)	3
Platymaia	2	Xaiva	12
Platyonichus	12		



Del. T. P. B. Stebbing

J. T. Bennie Reid, lith. Edin.

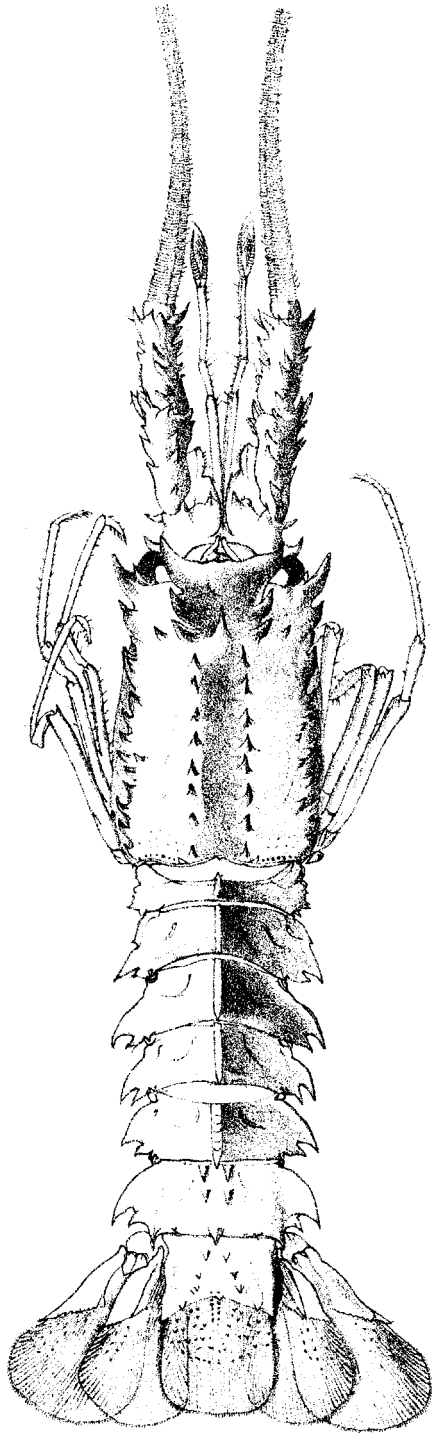
PLATYMAIA TURBYNEI, n. sp.



R.R. Stebbing.

J.T. Rennie Reid, Lith. Edinb.

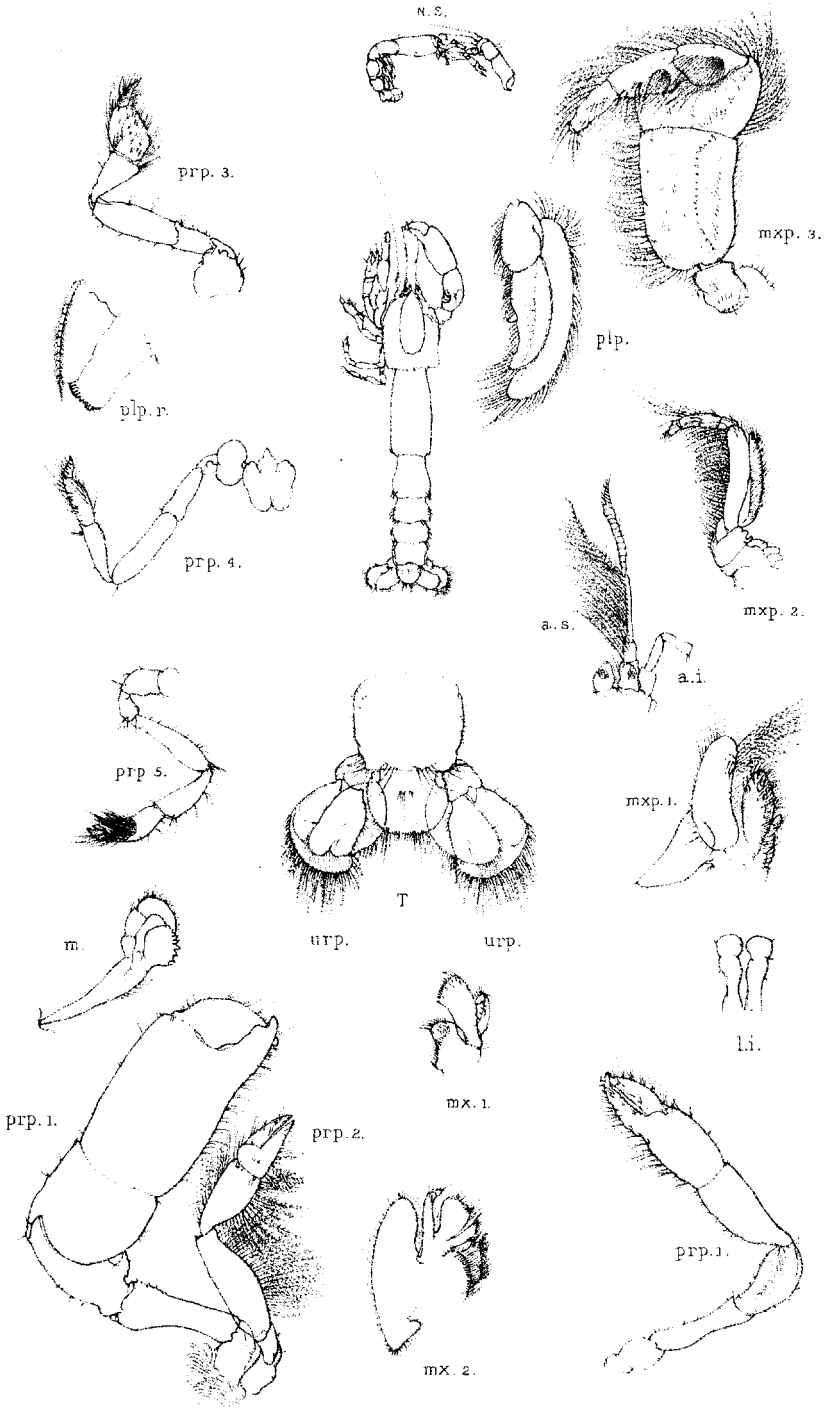
SCYRAMATHIA HERTWIGI, Doflein.

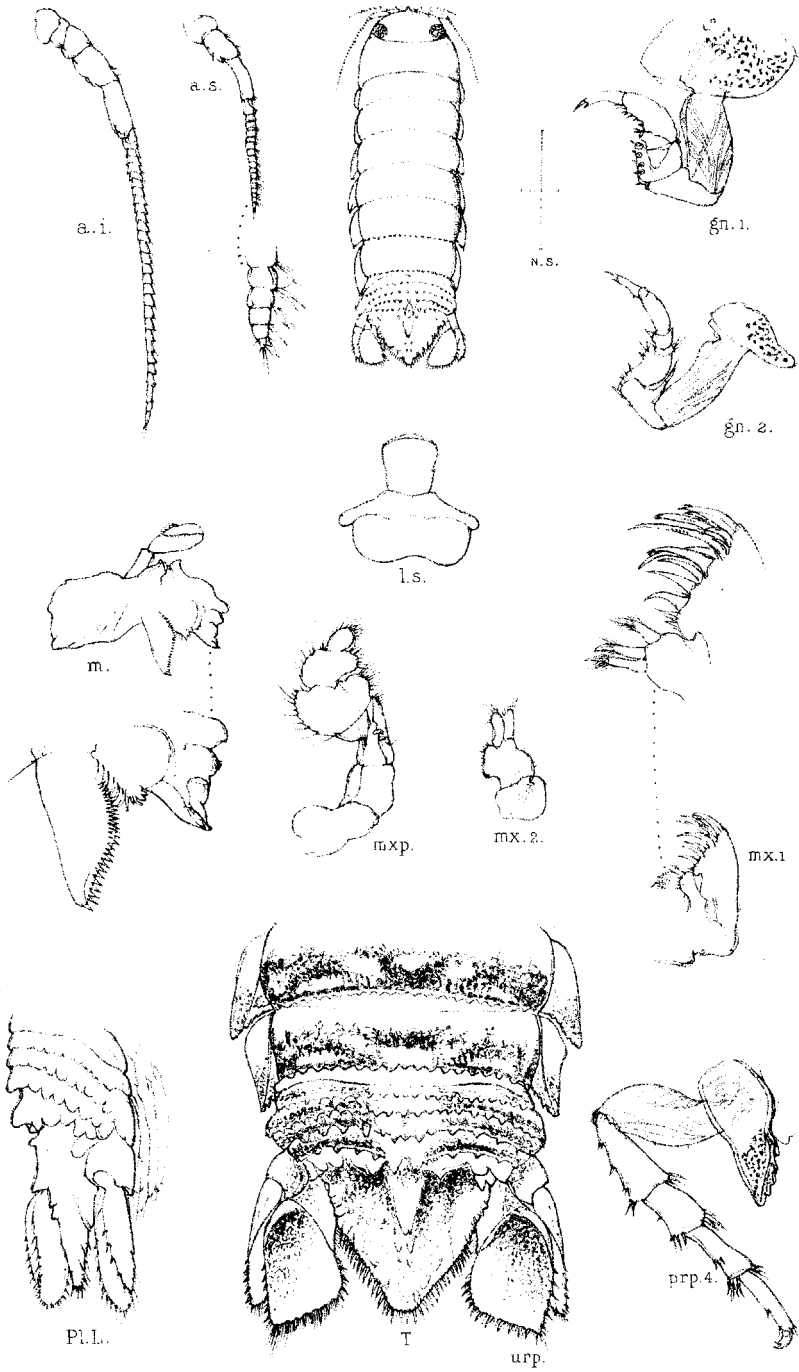


Del. T. R. R. Stebbing.

J. T. Renzie Reid, Lith. Edin<sup>r</sup>

JASUS PARKERI, n. sp.

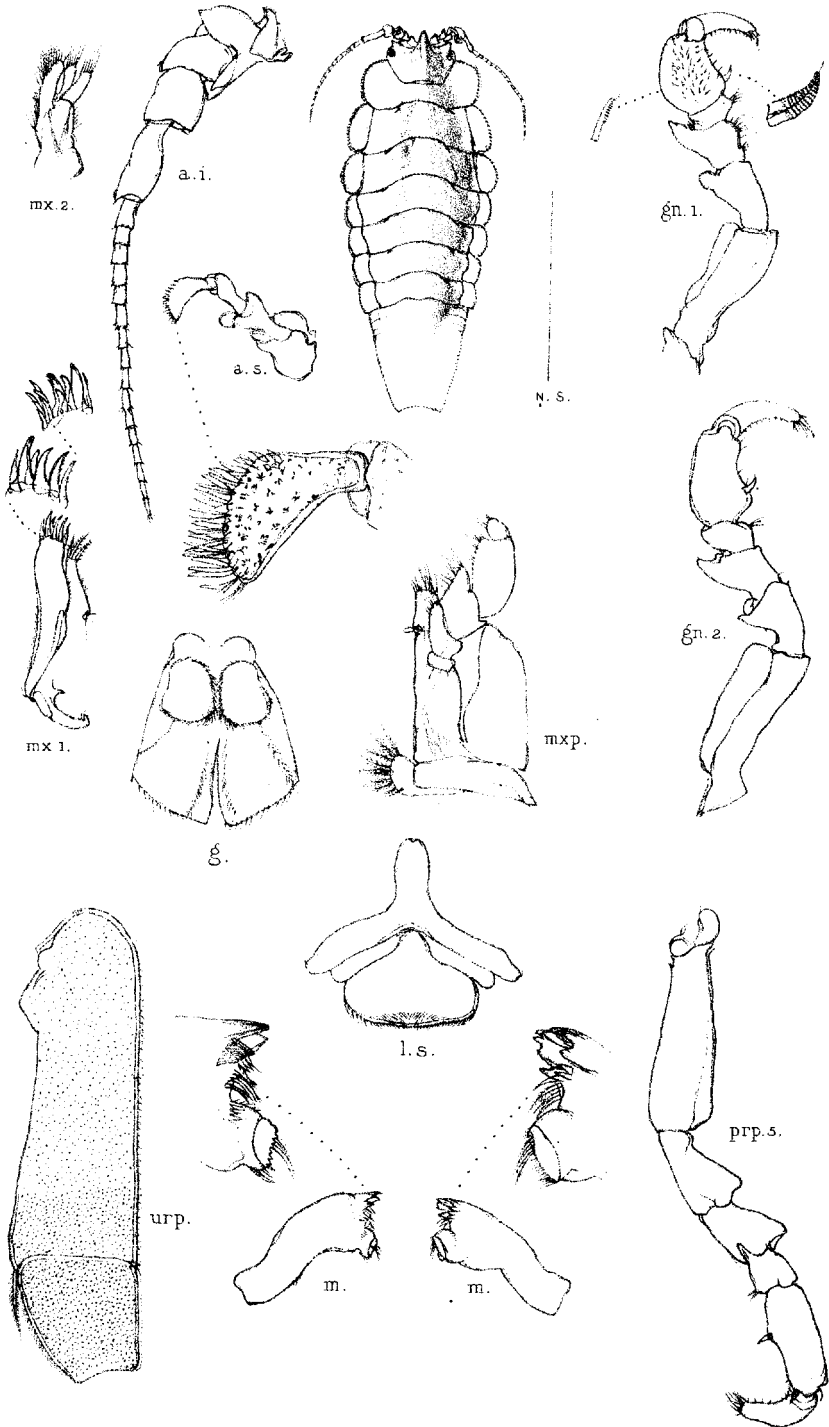




Del. T. R. R. Seebing.

J. T. Rempe. Etid. Lith. East.

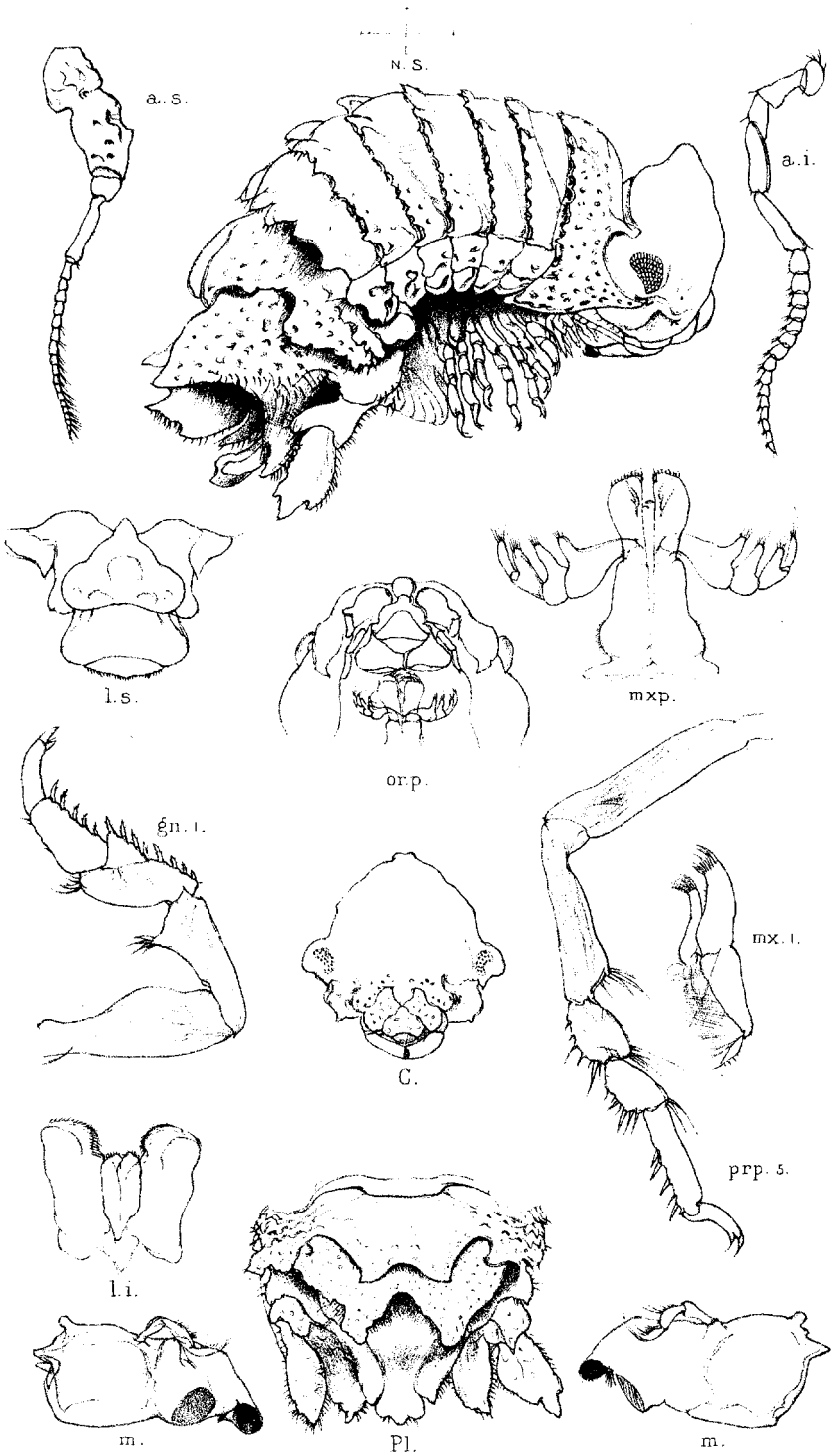
*CIROLANA VENUSTICAUDA*, n. sp.



Del. T. R. R. Seebing.

GLYPTIDOTEA LICHTENSTEINI (Krauss)

J. T. Rennie Reid, Lith. Edin.

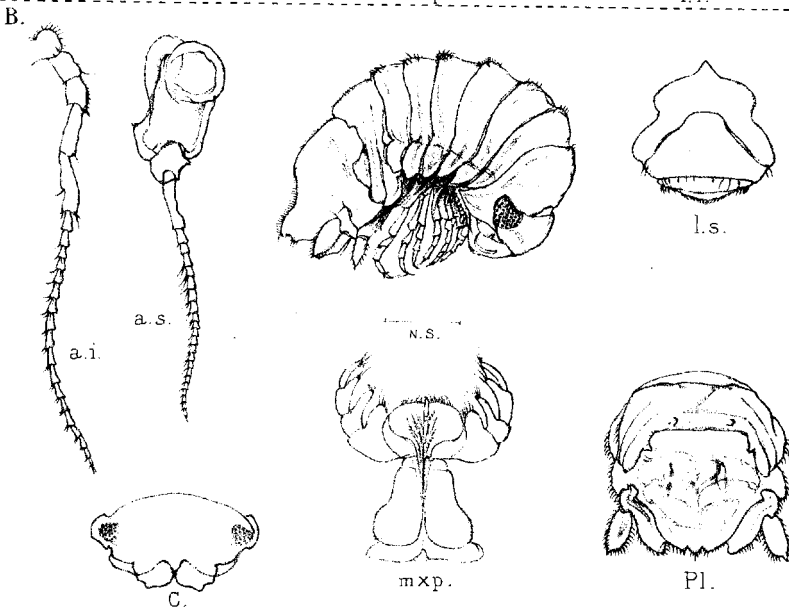
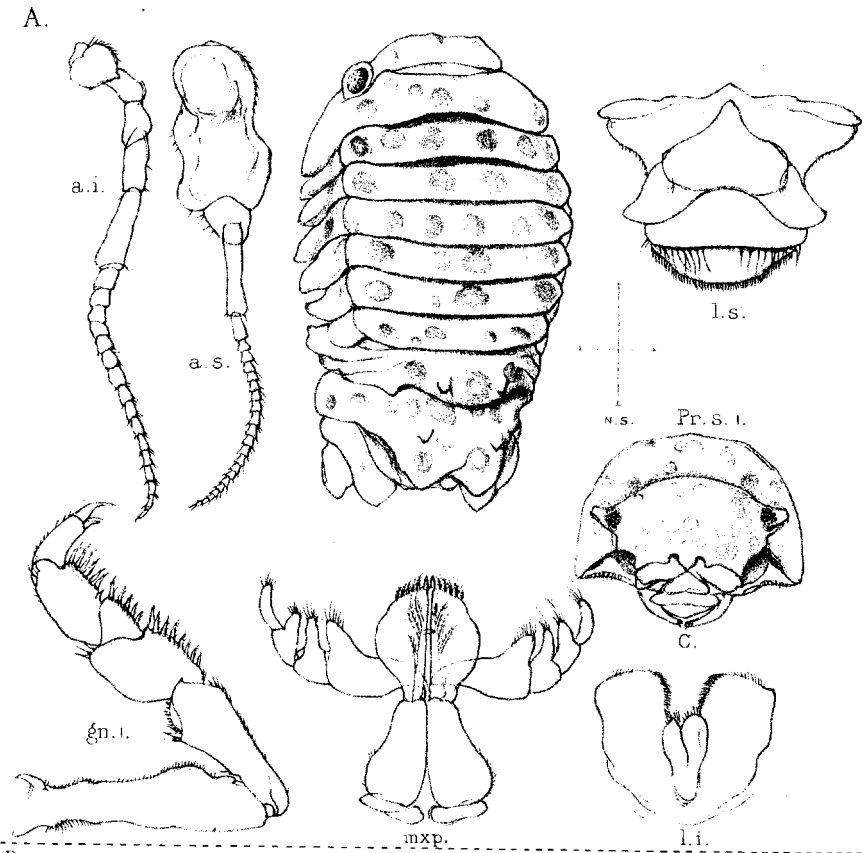


del. T. R. R. Stebbing.

J. T. Rennie Reid, Lich. Edin<sup>f</sup>

EXOSPHEROMA AMPLIFRONS, n.sp.





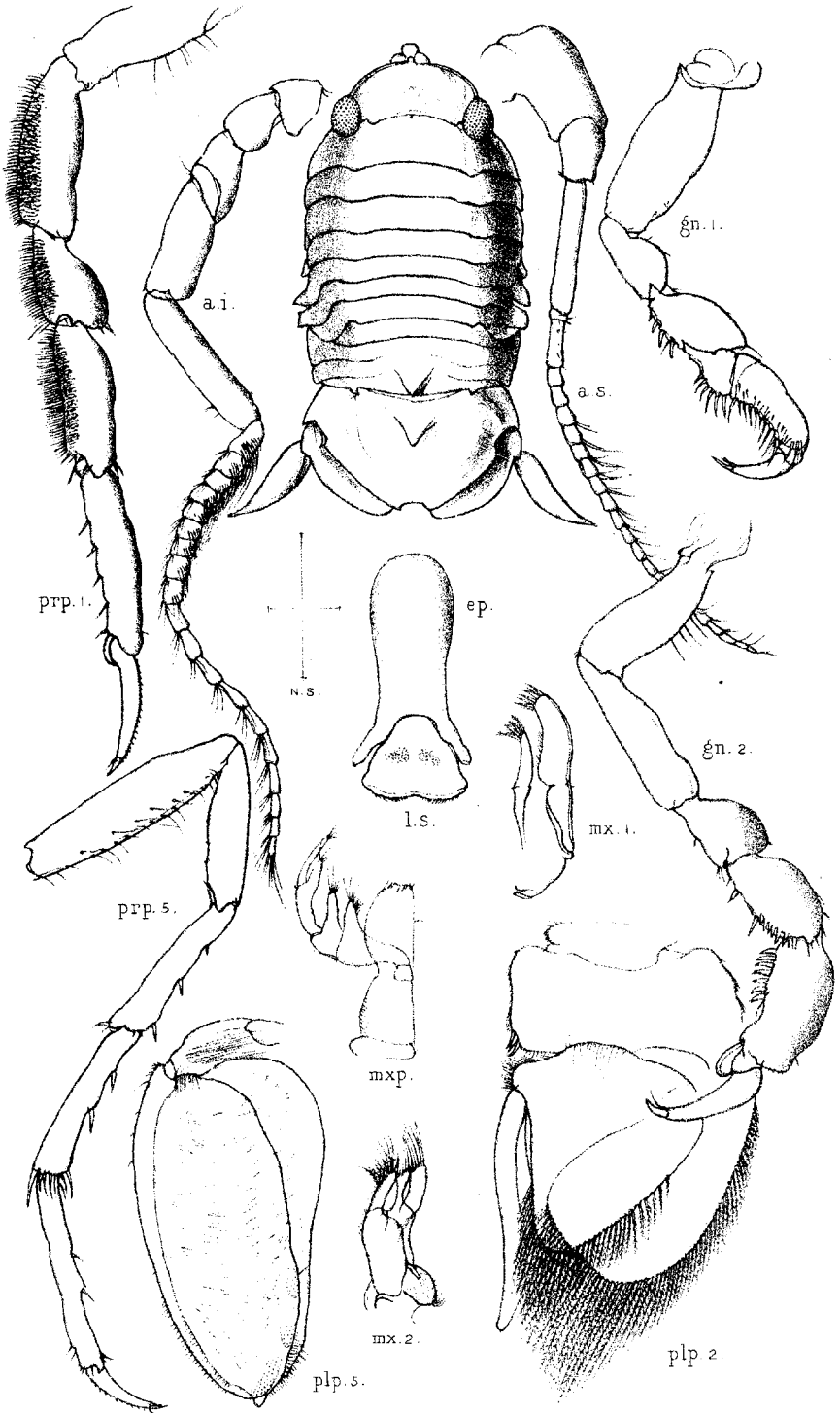
del. T. R. R. Stebbing.

J.T. Rennie Reid, Lith. Edin.

EXOSPHEROMA

(A). VALIDUM, n. sp.

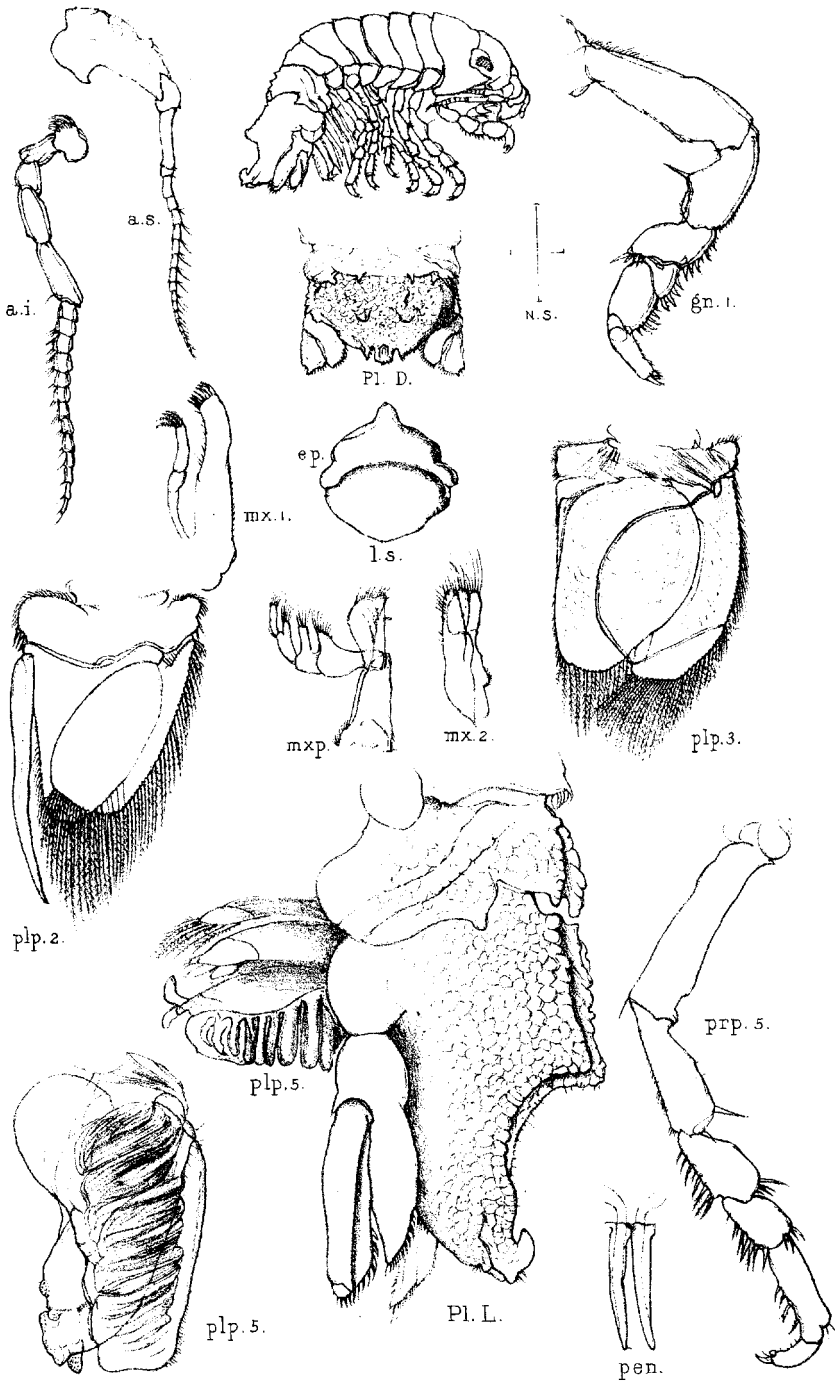
(B). SETULOSUM, n. sp.



del. F. R. Stebbing.

J. I. Ronnie Reid, lith. Edin<sup>f</sup>

PARASPHÆROMA PROMINENS, n. g. et sp.

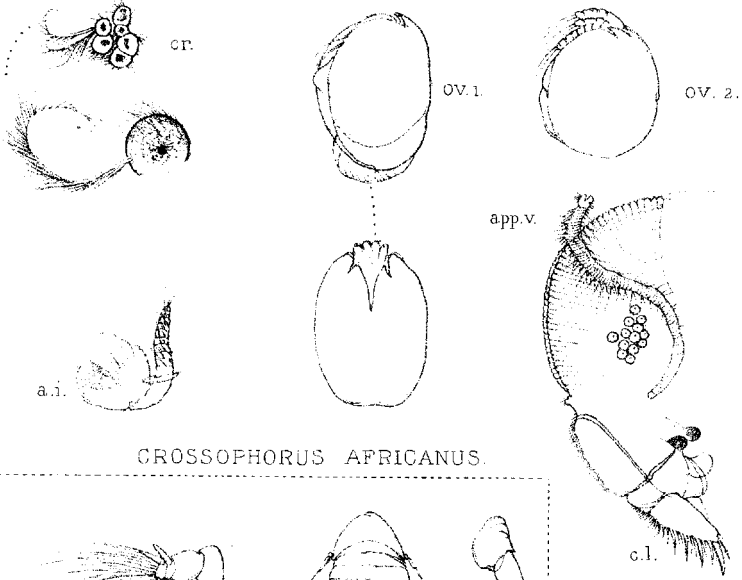


del. T. R. R. Stebbing.

J. T. Rennie Reid, Lith. Edin.

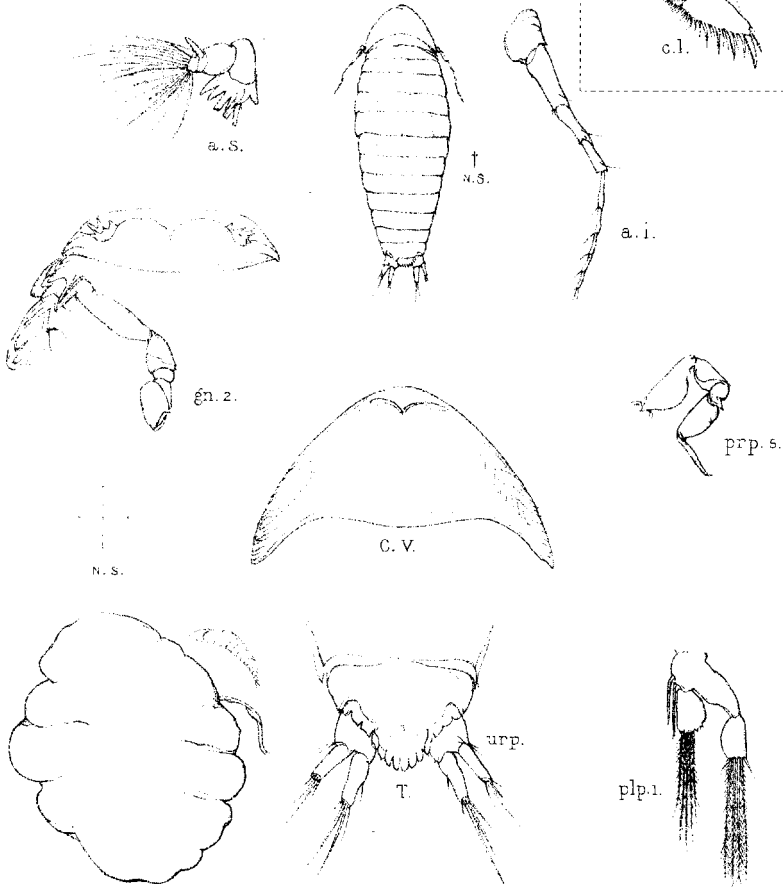
CYMODOCE UNCINATA, n. sp.

A.



CROSSOPHORUS AFRICANUS.

B.





Del. T. H. R. Stebbing.

CRASSOPHORUS AFRICANUS. Stebbing.

J. T. Rennie Reid, Lith. Edin'