

PLATE XVII

*Heteroplax dentatus* Stimpson,

R.S. 842, male of 11.5 x 7.5 mm,

A. Ventral view.

B. Cheliped.

R.S. 843, female of 12.5 x 9 mm,

C. Dorsal view.

D. Cheliped.

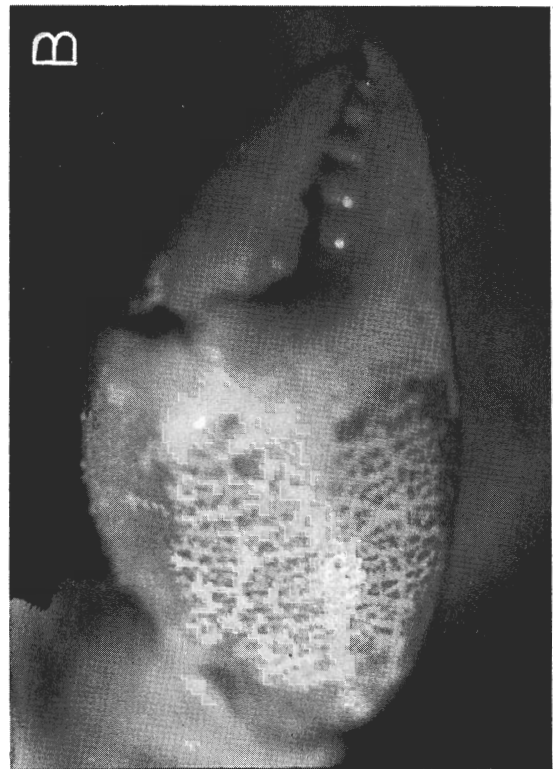
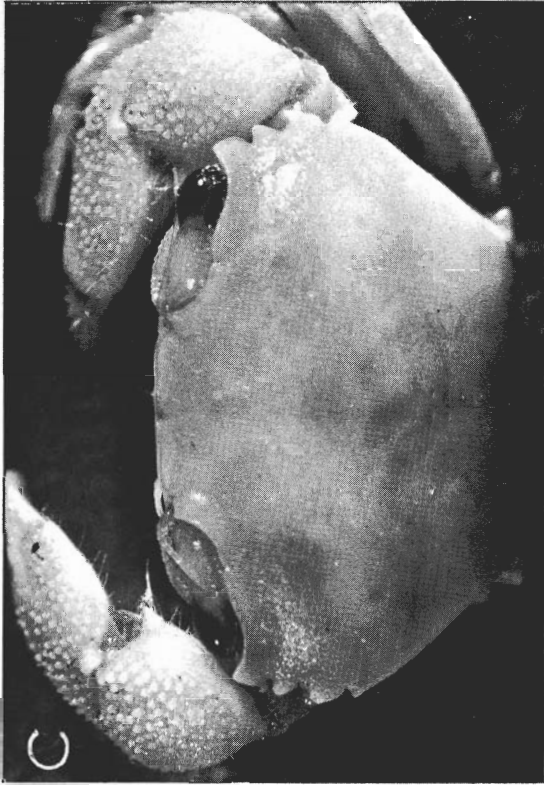


PLATE XVIII

*Heteroplax transversus* Stimpson, R.S. 111, female of 9 x 6.5 mm

A. Dorsal view.

*Heteroplax nitidus* Miers, (Thai Danish Expedition, 1966) male of  
7.5 x 5 mm

B. Dorsal view.

C. Carapace.

D. Chelipeds.

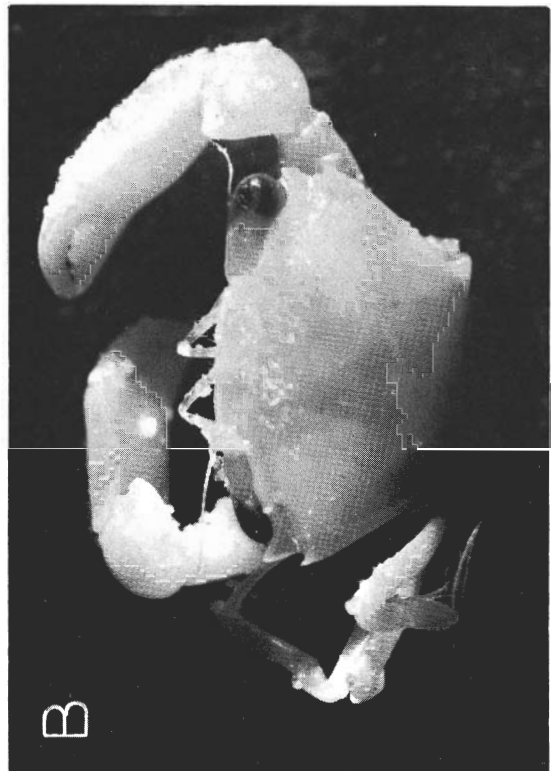
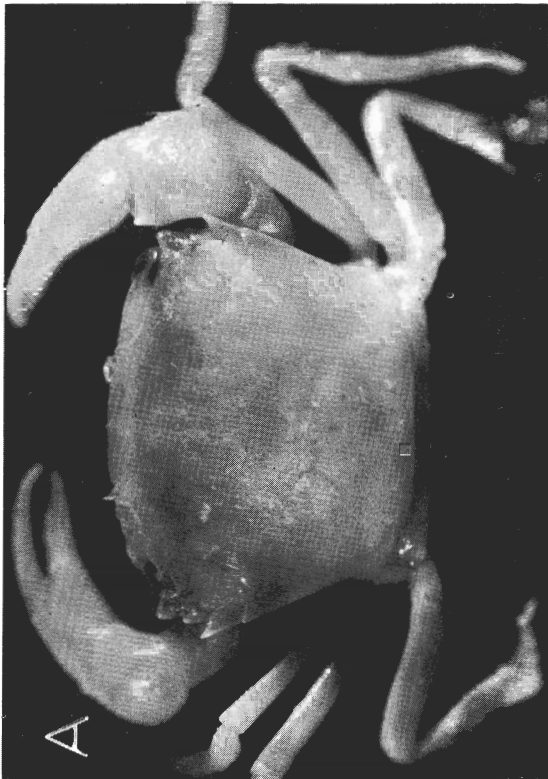
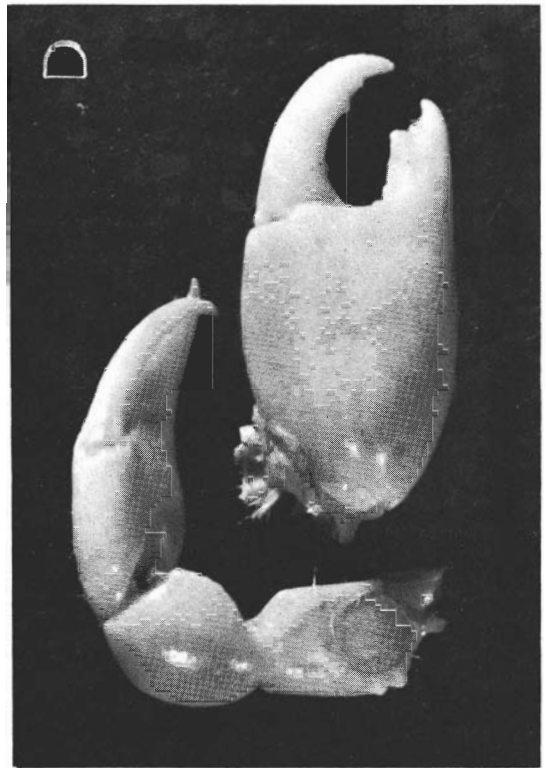
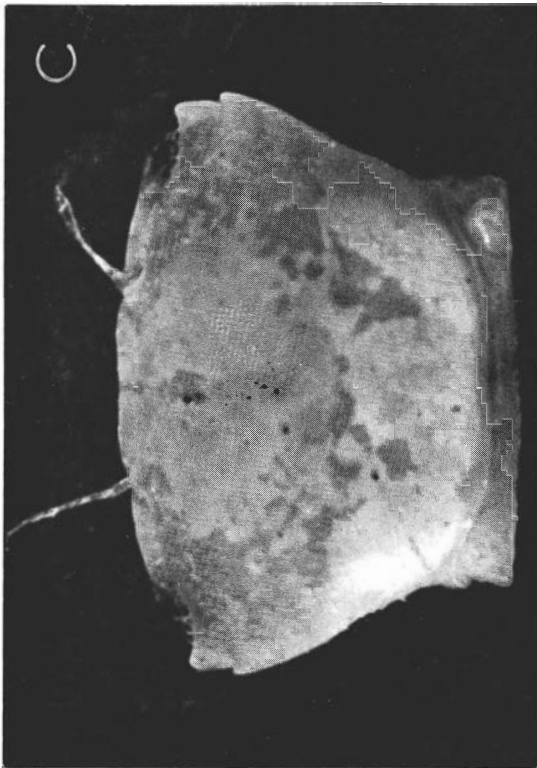


PLATE XIX

*Lophoplax teschi* Serène, Holotype, Ng. 862, female of 11.5 x 14 mm

- A. Carapace.
- B. Chelipeds.
- C. Coxal plate of right pleopod 4.

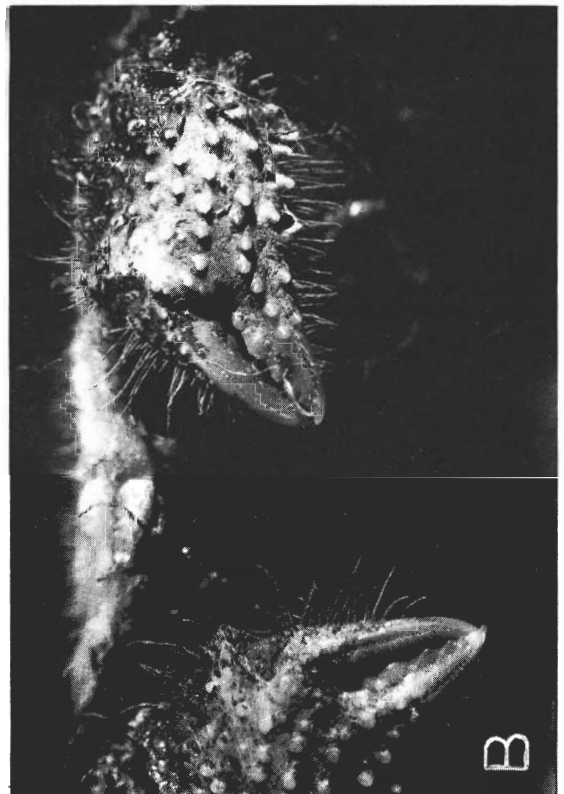
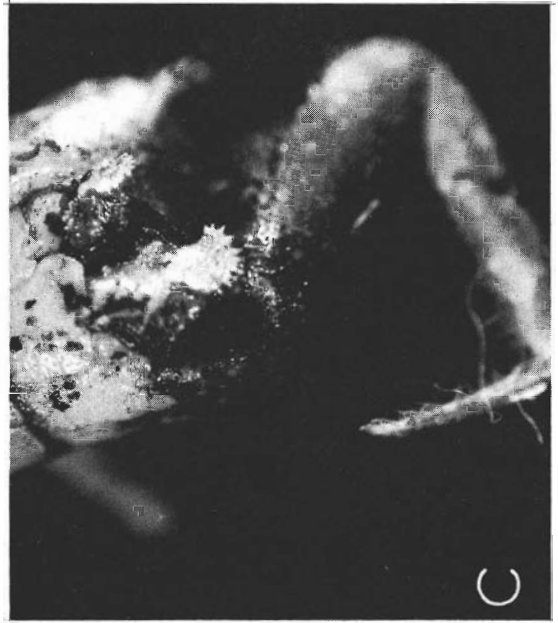


PLATE XX

*Zalasius sakaii* Balss, Ng. 1102, female of 14 x 16 mm

A. Carapace, dorsal view.

B. Carapace, ventral view.



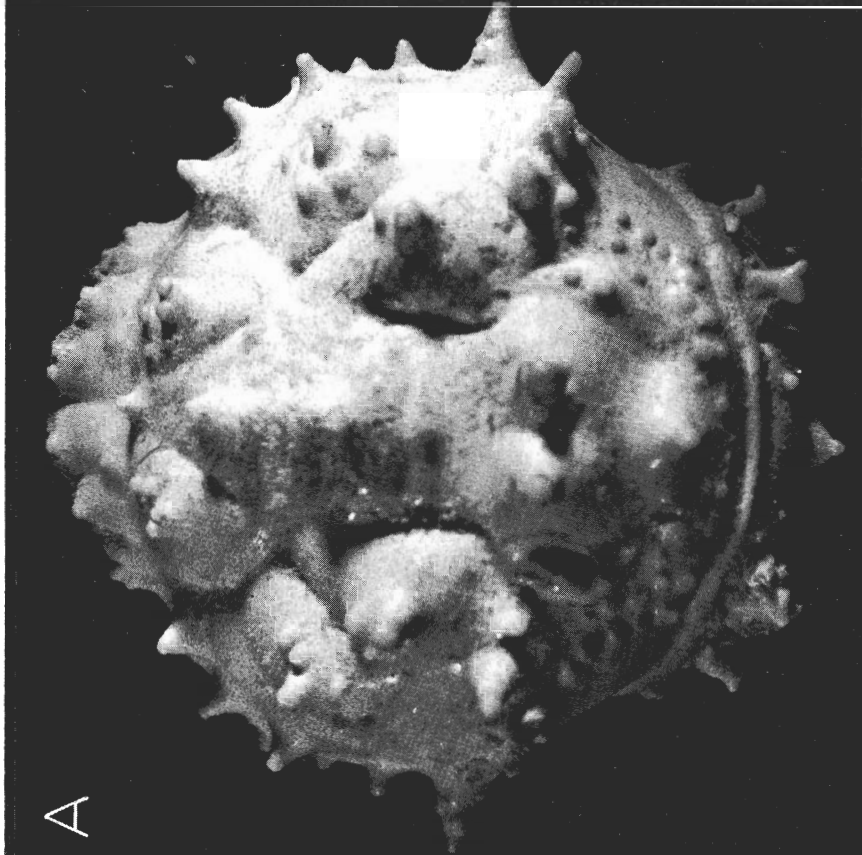
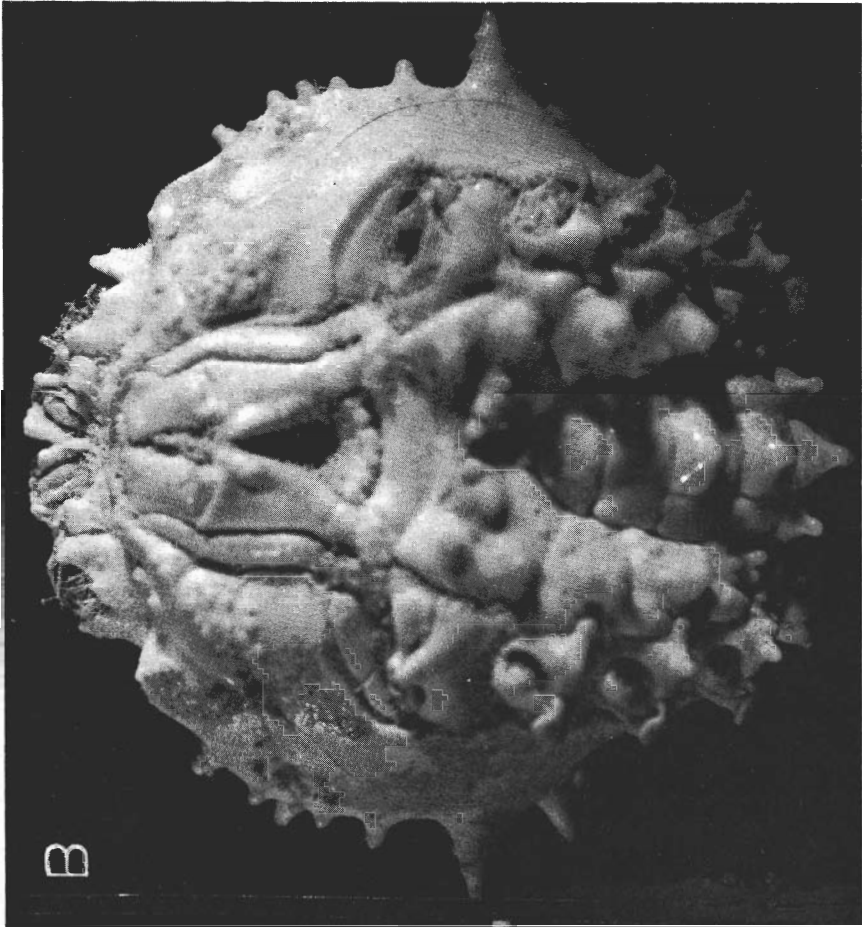


PLATE XXI

*Zalasius sakaii* Balss, Ng. 1102, female of 14 x 16 mm

- A. Right cheliped, dorsal view.
- B. Left cheliped, ventro-lateral view.

