

lines (like ripples) seems to be related to the ecology and ethology of the forms. It is perhaps also the case for the indication on *Kraussia integra* and *bongensis* of a shallow ventral cavity under the margin of the posterior part of the lateral border, which on *Guinotellus* are so well developed in the anterior part.

The function of these cavities is probably related to the water current running in the vault organized under the lateral margin of the carapace. Similarly, the notches of the lateral margins of *Kraussia* could be related to the passage (output or input) of such a water current. Without speculating further, I summarize my observations by bringing together the illustrations (Fig. 24) of the ventral side of the lateral border of *Kraussia bongensis* and of *Guinotellus melvillensis* Serene 1971.

Acknowledgements

I am indebted to B. R. Wilson, R. W. George and the Director of the Western Australian Museum for the loan of the main part of the studied material. I thank particularly R. W. George for his help in amending the manuscript.

References

- Balss, H. (1922).—Ostasiatische Decapoden IV. Die Brachyrhynchen (Cancridae). *Arch. f. Naturgesch.* 68A: (11) 94-166, fig. 1-2, pl. 1-2.
- (1935).—Brachyura of the Hamburg Museum expedition to South Western Australia 1905. *Journ. R. Soc. West. Australia* 21: 113-151, text-fig. 1-5, pl. 13.
- (1938).—Die Decapoda Brachyura von Dr. Sixten Bocks Pazifik-Expedition 1917-18. *Goteborgs Kungl. Vet. Och Witterh-Samh. Handl. B* 5: (7), 1-85, 18 figs., pl. 1-2.
- Barnard, K. H. (1950).—Descriptive catalogue of South African Decapoda Crustacea. *Ann. South Afr. Mus.* 38: 1-837, fig. 1-154.
- Borradaile, L. A. (1900).—On some Crustacean from the South Pacific. IV. The crabs. *Proc. Zool. Soc. London* 4: 568-596, pl. 40-42.
- (1902).—Marine crustaceans—III. The Xanthidae and some other crabs. *Professor Stanley Gardiner's Fauna Geogr. Mald. Lacc. Arch.* 1: (3), 237-271, text-fig. 41-60.
- Buitendijk, A. M. (1960).—Brachyura of the families Atelecyclidae and Xanthidae (Snellius Exp.), *Temminckia* 10: 252-335, fig. 1-9.
- Calman, W. T. (1900).—On a collection of Brachyura from Torres Straits. *Trans. Linn. Soc. London*, series 2, 8: 1-50, pl. 1-3.
- Dana, J. D. (1852).—Crustacea. *United States Exploring Expedition during the years 1838, 1839, 1840, 1841, 1842*, 13: I, I-VIII and 1-685.
- Edmondson, C. H. (1925).—Marine zoology of Tropical central Pacific Crustacea. *Bull. Bernice P. Bishop Mus.* 27: 3.
- (1946).—Crustacea-Brachyura in: *Reef and shore fauna of Hawaii* (revised edition of 1933). *Bernice P. Bishop Mus., Special Publ.* 22: 267-382, fig. 163-185.
- Gordon, I. (1931).—Brachyura from the coasts of China. *J. Linn. Soc. London* 37: (254), 525-558, 36 text-fig.
- *Haan, W. de. (1833-1849).—Crustacea in: de Siebold, *Fauna Japonicum sive Descriptio animalium, quae in itinere per Japoniam, jussu et auspiciis superiorum, qui summum in India Batava Imperium tenent suscepto, annis 1823-1830 collegit, notis, observationibus et adumbrationibus illustravit*, p. I-XVII, I-XXXI, 1-244, pl. 1-55, A-Q.
- Henderson, J. B. (1893).—Contribution to Indian Carcinology. *Trans. Linn. Soc. London, Zool. ser.* 2, 5: 325-458, pl. 36.

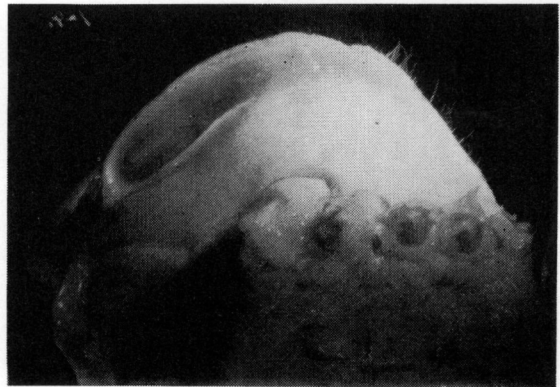
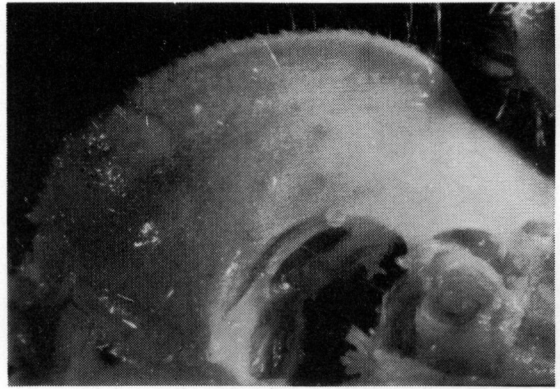


Figure 24.—Above, *Kraussia bongensis*, ventral side of the lateral border of carapace. Below, *Guinotellus melvillensis*, ventral side of the lateral border of carapace with cavity of the subhepatal region.

- *Krauss, F. (1843).—Die Sudafrikanischen Crustaceen. Eine Zusammenstellung aller bekannten Malacostraca, Bemerkunge über deren Lebensweise und geographische Verreitung, nebst Beschreibung und Abbildung mehrerer neuen Arten. *Stuttgart*, p. 1-68, pl. 1-4.
- Laurie, D. (1906).—Report on the Brachyura collected by Prof. Herdman at Ceylon in 1902, in: *Report to Colonial Government on the Pearl Oyster Fisheries of the Gulf of Manaar*, part V, 5, 349-432, pl. 1-2.
- Muller, F. (1886).—Zur Crustaceen fauna von Trincomall. *Verh. Naturf. Ges. Basel* 3: 470-484, pl. 4-5.
- Rathbun, M. J. (1902).—Crabs from the Maldive Islands. *Bull. Mus. Comm. Zool. Cambridge*, 39: (5), 123-138, 1 pl.
- (1906).—The Brachyura and Macrura of the Hawaiian Islands. *U.S. Fish. Comm. Bull. for 1903*, 23: (3), 828-930, pl. 1-24, 79 text-fig.
- (1910).—The Danish Expedition to Siam 1899-1900 V. Brachyura. *Mem. Acad. Roy. Sc. Danem. Cop.*, 7e ser., 5: (4), 303-368, fig. 1-44, pl. 1-2.
- Sakai, T. (1934).—Brachyura from the coast of Kyusyu. (Contributions from the Simoda Marine Biological Station). *Sc. Rep. Tokyo Bunrika Daigaku. Sect. B*, 1: (25), p. 281-330.
- (1936).—Report on the Brachyura, collected by Mr. F. Hiro et Palao Islands. *Sc. Rep. Tokyo Bunrika sect. B*, 2: (37), p. 155-177, 7 fig-text., pl. 12-14.

- Sakai, T. (1939).—Studies on the Crabs of Japan. IV Brachygnatha Brachyrhyncha, Tokyo, p. 365-741, 129 fig., pl. 52-111.
- (1965).—The Crabs of Sagami Bay collected by H.M. the Emperor of Japan. Maruzen, Tokyo, p. I-XVI, 1-206 (English part), text-fig. 1-27, color plates 1-100.
- Serene, R. (1971).—Observations sur des genres et especes nouveaux ou mal connus de Brachyours (Decapoda Crustacea) du Sud Est Asiatique. *Bull. Mus. Hist. Nat., Paris*, 42 (5); 903-918, pl. 1-6.
- *Stebbing, T. R. R. (1910).—General Catalogue of the South African Crustacea for the Investigation in South Africa. *Ann. S. Afr. Mus.* 6: (4), 381-593, pl. 15-22.
- (1913).—General Catalogue of the South African Crustacea (Part IX of South African Crustacea for the Marine Investigation in South Africa). *Ann. S. Afr. Mus.*, 17: (1), 23-46, pl. 1-8.
- Stephensen, K. (1945).—The Brachyura of the Iranian Gulf. *Danish Scient. Invest. in Iran*, Copenhagen, part IV, p. 57-237, fig. 1-60.
- Stimpson, W. (1858).—Prodromus descriptionis animalium evertibratorum quae in Expeditione ad Oceanum Pacificum Septentrionalem, a Republica Federata missa, Cadwaladare Ringgold et Johanne Rodgers Ducibus, Observavit et descripsit. Part IV—Crustacea, cancroidea et corystidae, cancroidea. *Prod. Acad. Nat. Sc. of Philad.* 10: 31-40 (29-37).
- Stimpson, W. (1907).—Report on the Crustacea (Brachyura-Anomura) collected by the North Pacific Expedition 1853-56. *Smith. Misc. coll.*, Washington, 49: 1-240, pl. 1-26.
- Tweedie, M. W. F. (1947).—On the Brachyura of Christmas Island. *Bull. Raffles Mus.*, Singapore, 18, p. 27-42, fig. 1.
- (1950).—The fauna of the Cocos Keeling Islands, Brachyura and Stomatopoda. *Bull. Raffles Mus.*, Singapore, 22: 105-148, fig. 1-4, pl. 16, 17.
- Urita, T. (1926).—A check list of Brachyura found in Kagoshima Prefecture. Japan.
- Ward, M. (1935).—Notes on a collection of crabs, from Christmas Island Ind. Ocean. *Bull. Raffles Mus. Singapore*, 9: 5-28, pl. 1-3.
- *White, A. (1847).—Descriptions of new crustacea of eastern seas. *Ann. Mag. Nat. Hist. London* 20: 60-65.
- Yokoya, Y. (1936).—Some rare and new species of Decapod Crustaceans found in the vicinity of the Misaki Marine Biological Station. *Jap. Journ. Zool.* 7: (1), 130-146.

* Not seen by present author.