

1

2

G. C. CLUTTON, photo.

EXPLANATION OF PLATE XXXVIII.

---

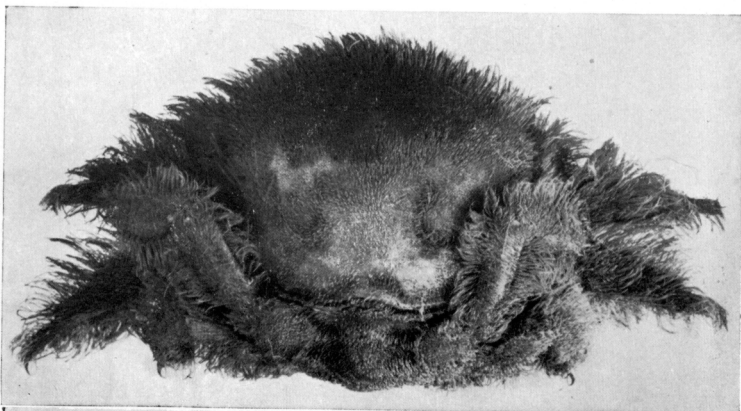
*Dromidiopsis excavata* (Stimpson). Male (E.5199). Carapace 32.5 mm. wide.

Fig. 1.—Dorsal view.

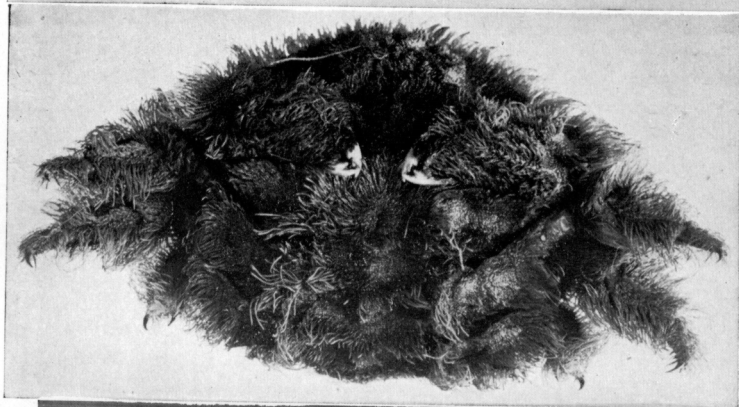
Fig. 2.—Ventral view.

*Dromidiopsis excavata* (Stimpson). Male (P.2132). Carapace 30.5 mm. wide; under a compound ascidian.

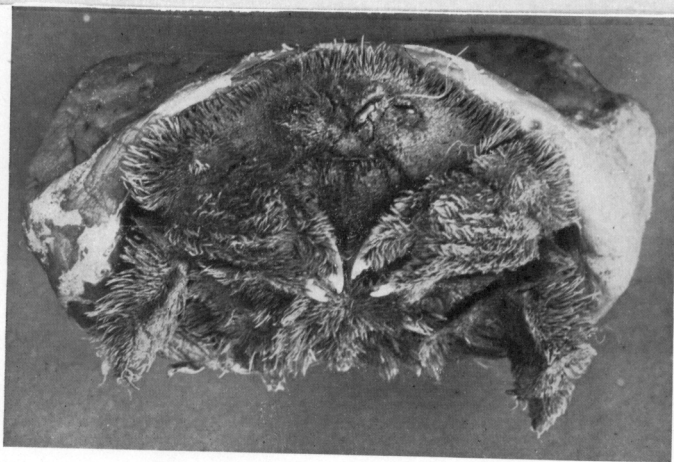
Fig. 3.—Frontal view.



1



2



3

EXPLANATION OF PLATE XXXIX.

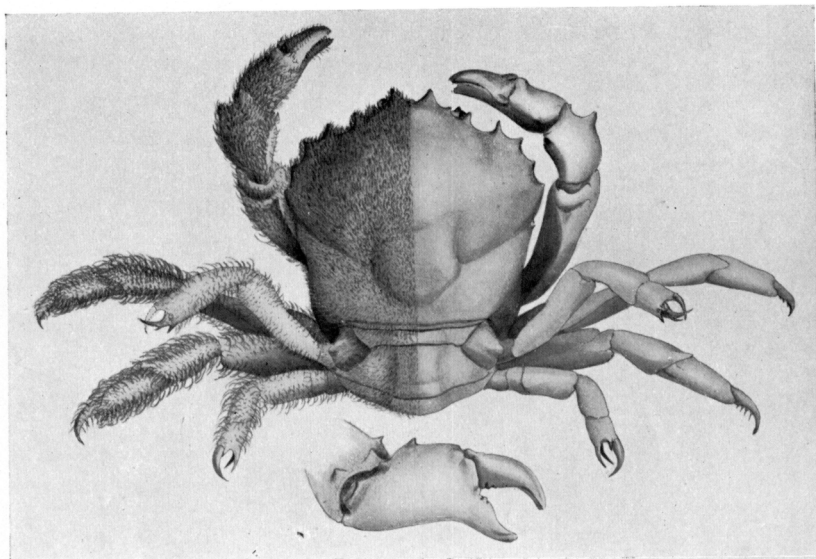
---

*Dromidia australis*, sp. nov. Female holotype. Carapace  
29 mm. wide.

Fig. 1.—Dorsal view, right half denuded.

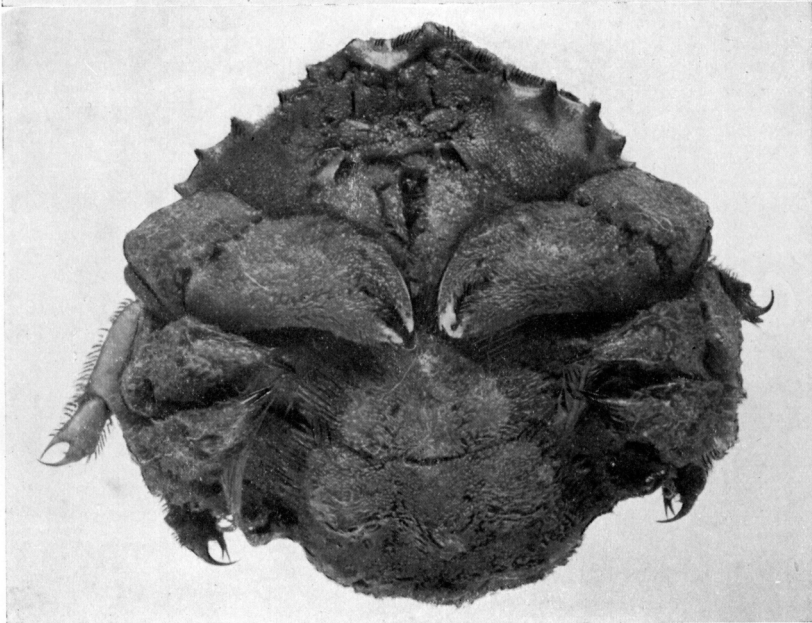
Fig. 2.—Right chela, denuded.

Fig. 3.—Ventral view.



1

2



3

PHYLLIS F. CLARKE (1-2), del.  
C. R. SHOEMAKER (3), photo.

EXPLANATION OF PLATE XL.

---

*Dromidia australis*, sp. nov. Male (E.6132). Carapace  
33.7 mm. wide.

Fig. 1.—Dorsal view.

*Dromidia insignis*, sp. nov. Female holotype. Carapace  
17.5 mm. wide.

Fig. 2.—Dorsal view.

Fig. 3.—Ventral view.