

1

2

3

PHYLLIS F. CLARKE (1-2) del.  
C. R. SHOEMAKER (3), photo.

EXPLANATION OF PLATE XXXIV.

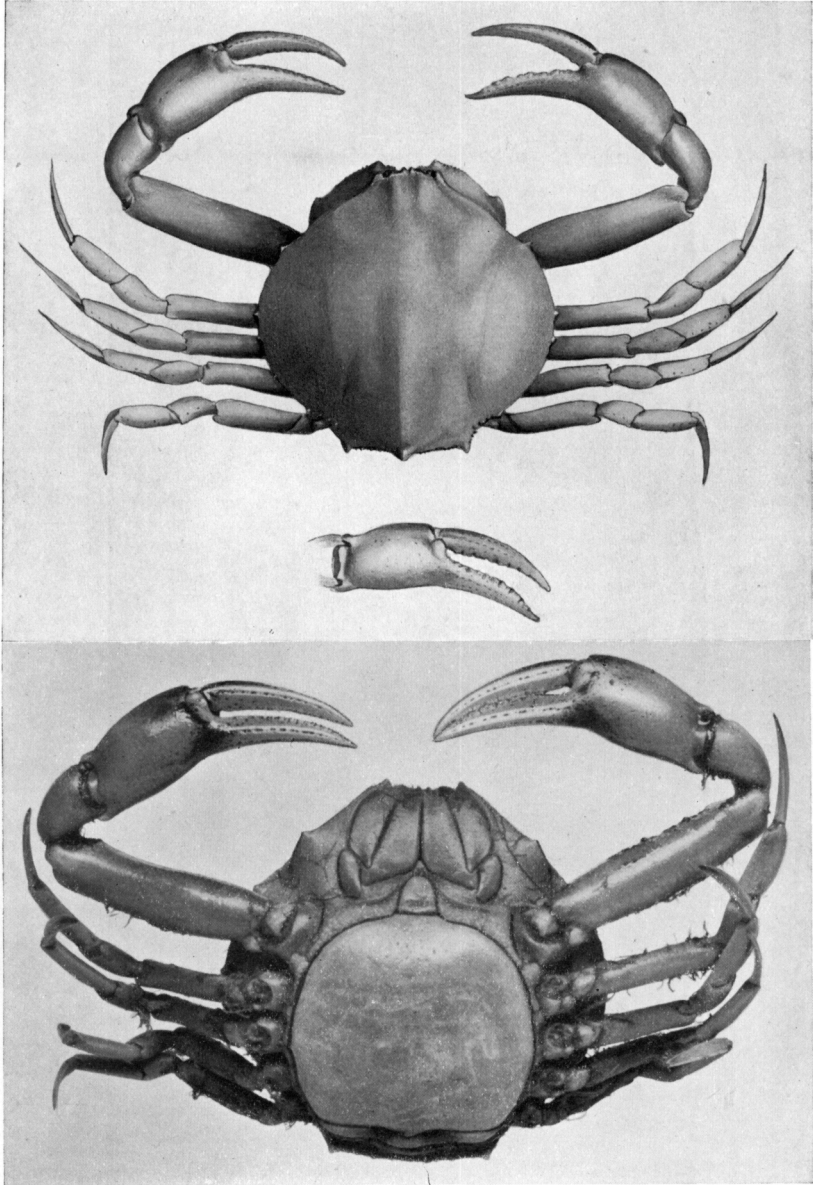
---

*Philyra murrayensis*, sp. nov. Female holotype. Carapace  
25.7 mm. wide.

Fig. 1.—Dorsal view.

Fig. 2.—Right chela.

Fig. 3.—Ventral view.



PHYLLIS F. CLARKE (1-2), del.  
C. R. SHOEMAKER (3), photo.

EXPLANATION OF PLATE XXXV.

---

*Ebalia tuberculosa* (A. Milne Edwards). Male (E.5160).  
Carapace 8.8 mm. wide.

Fig. 1.—Dorsal view.

*Ebalia tuberculosa* (A. Milne Edwards). Male (E.6484).  
Carapace 9 mm. wide.

Fig. 2.—Dorsal view.

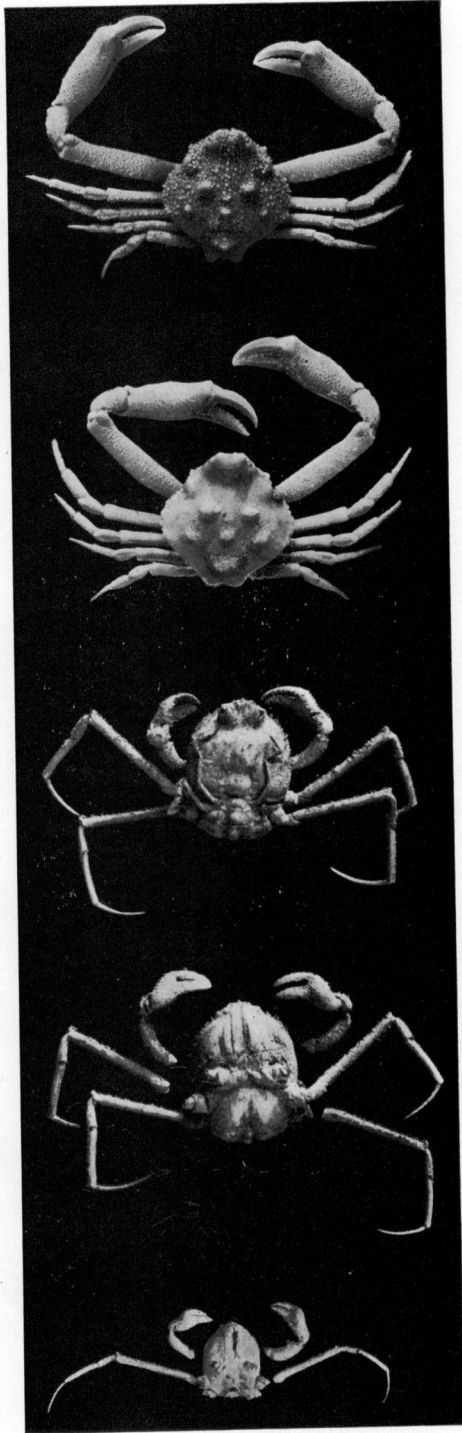
*Cymonomops similis*, Grant. Female (E.4818). Carapace  
7 mm. wide.

Fig. 3.—Dorsal view.

Fig. 4.—Ventral view.

*Cymonomops similis*, Grant. Male (E.4818). Carapace  
5.8 mm. wide.

Fig. 5.—Ventral view.

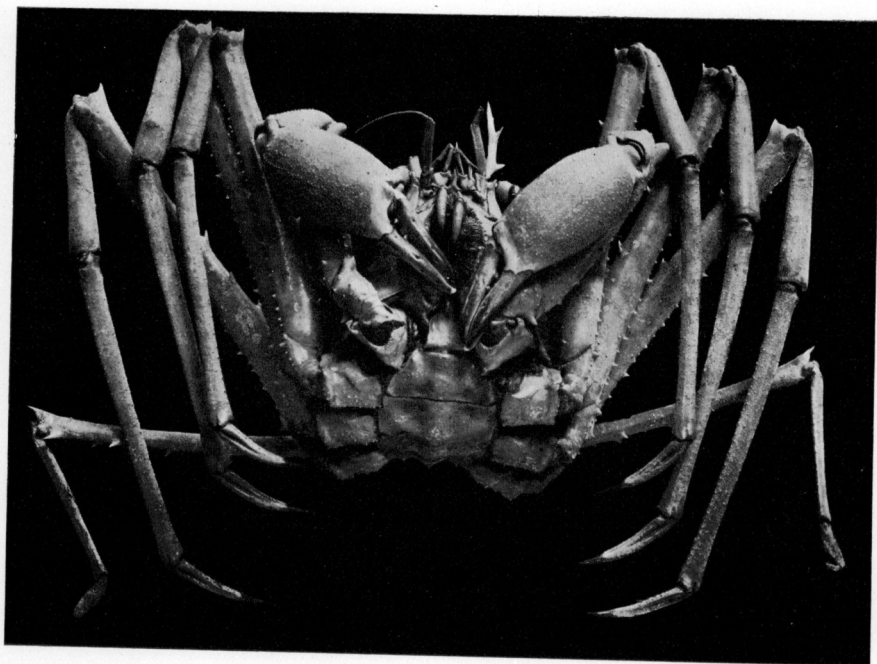


G. C. CLUTTON, photo.

EXPLANATION OF PLATE XXXVI.

---

*Latreilopsis petterdi*, Grant. Male (E.5128). Carapace  
65 mm. wide. Ventral view.



G. C. CLUTTON, photo.

EXPLANATION OF PLATE XXXVII.

---

*Homola orientalis*, Henderson. Male (E.6137). Carapace  
22.5 mm. wide.

Fig. 1.—Dorsal view.

*Homola orientalis*, Henderson. Male (E.5144). Carapace  
27 mm. wide.

Fig. 2.—Ventral view.