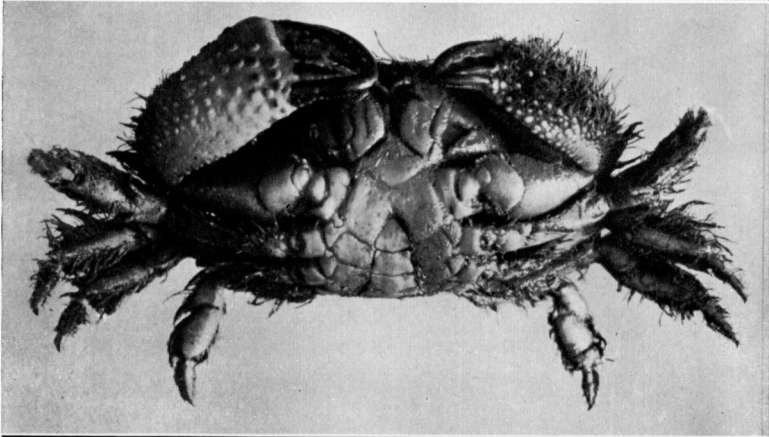
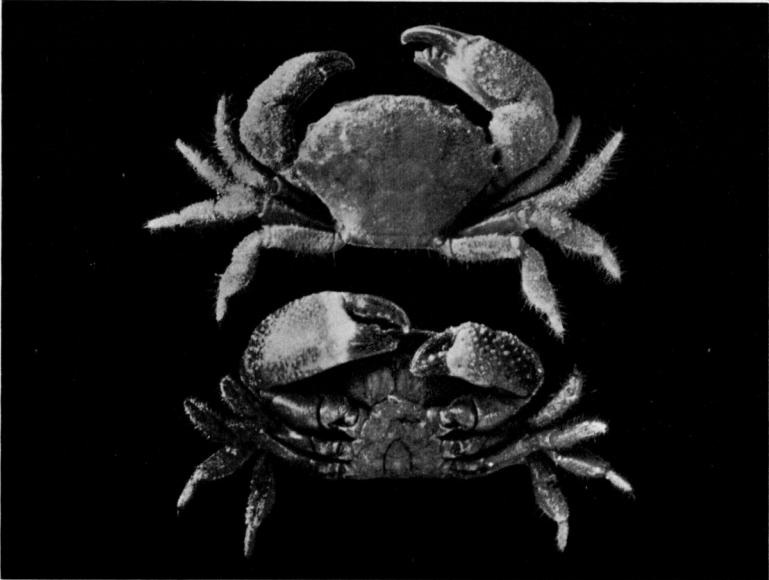


1



2



3

4

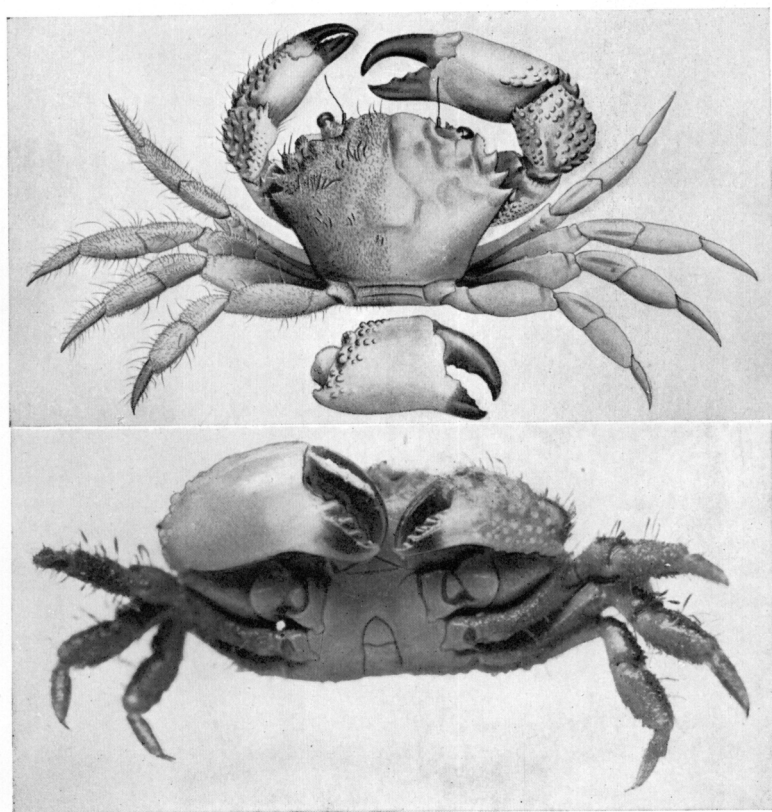
EXPLANATION OF PLATE XXV.

Pilumnus tantulus, sp. nov. Male holotype. Carapace
10.2 mm. wide, including teeth.

Fig. 1.—Dorsal view, right half denuded.

Fig. 2.—Right chela.

Fig. 3.—Ventral view.



PHYLLIS F. CLARKE (1-2), del.
C. R. SHOEMAKER (3), photo.

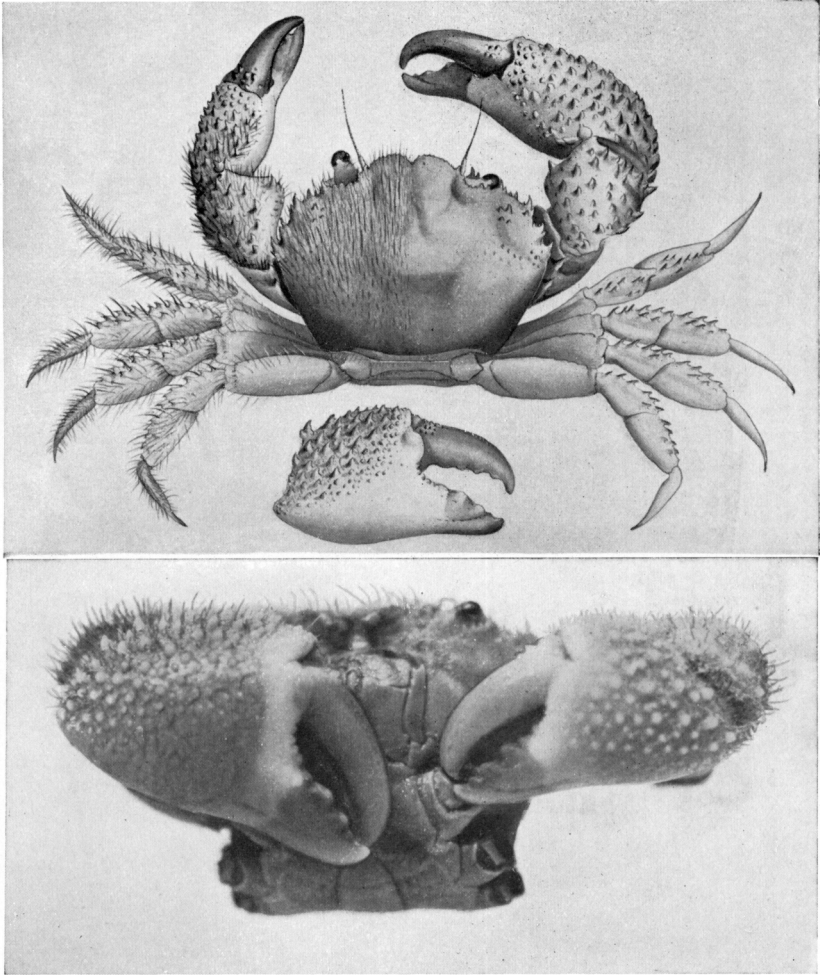
EXPLANATION OF PLATE XXVI.

Pilumnus etheridgei, sp. nov. Male holotype. Carapace 16.5 mm. wide, including spines.

Fig. 1.—Dorsal view, right half denuded. The legs, being detached from the holotype, have been drawn from another specimen of about the same size, in which they are still attached to the body.

Fig. 2.—Right chela.

Fig. 3.—Ventral view.



1

2

3

PHYLLIS F. CLARKE (1-2), del.
C. R. SHOEMAKER (3), photo.

EXPLANATION OF PLATE XXVII.

Pilumnus tomentosus, Latreille. Male (E.4454). Carapace 31.3 mm. wide.

Fig. 1.—Dorsal view.

Fig. 2.—Ventral view.

Actumnus pugilator, A. Milne Edwards. Female (E.3192). Carapace 18.6 mm. wide.

Fig. 3.—Dorsal view.

Fig. 4.—Ventral view.