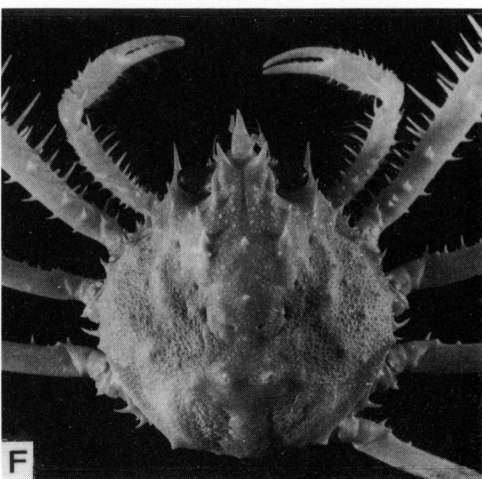
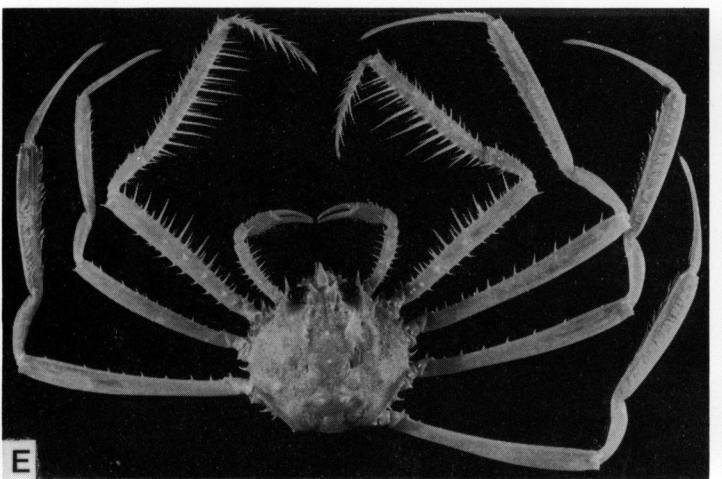
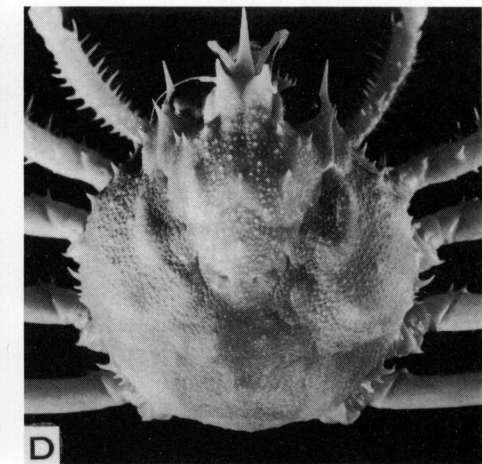
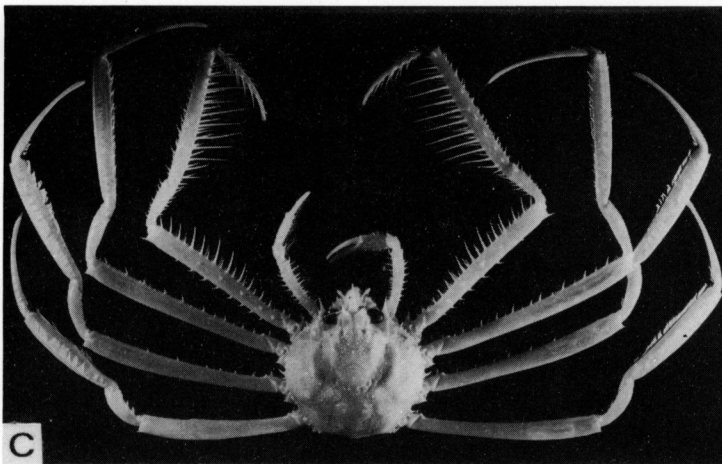
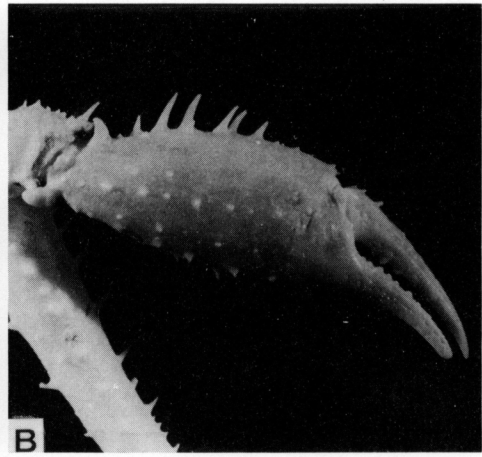
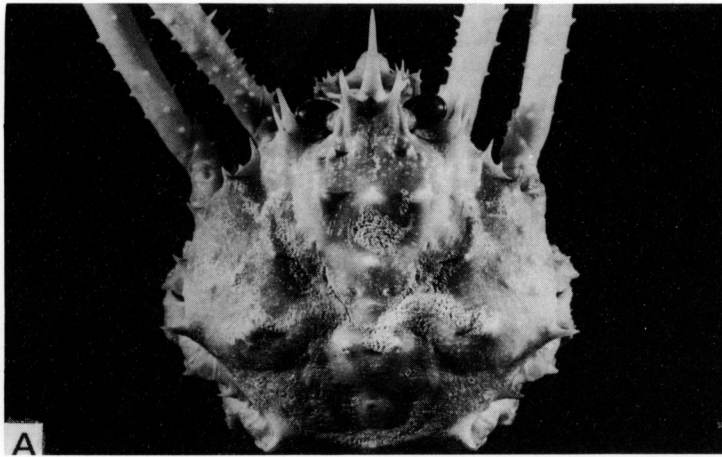


PLANCHE IV



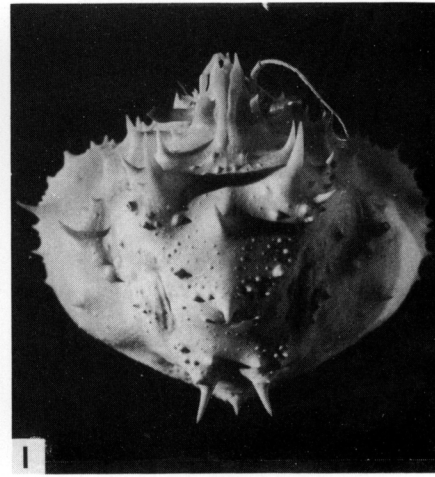
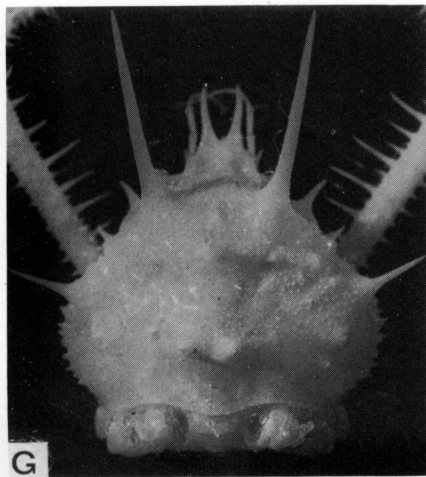
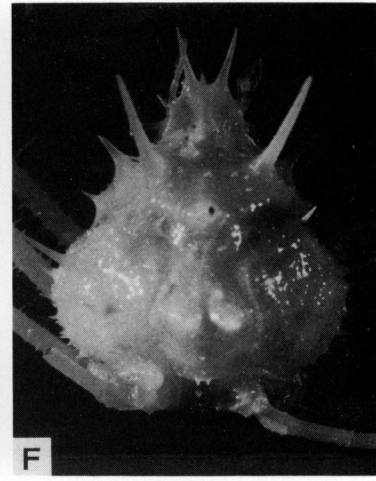
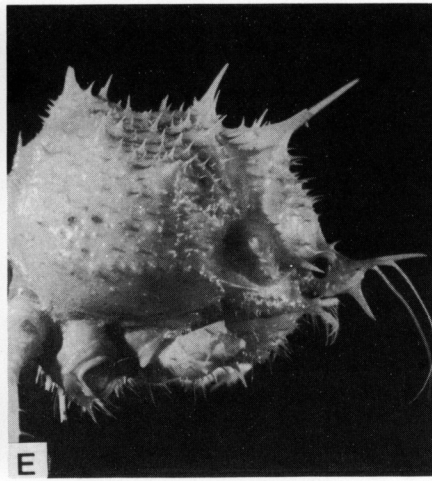
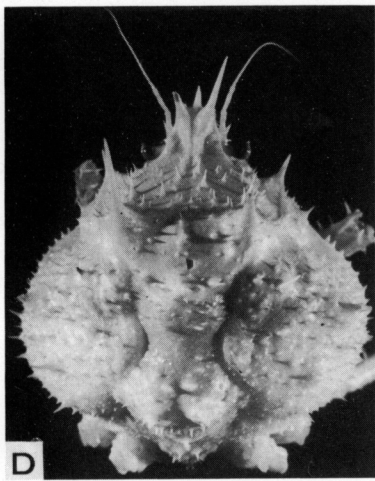
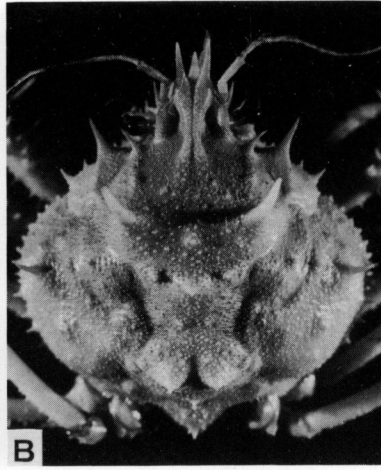
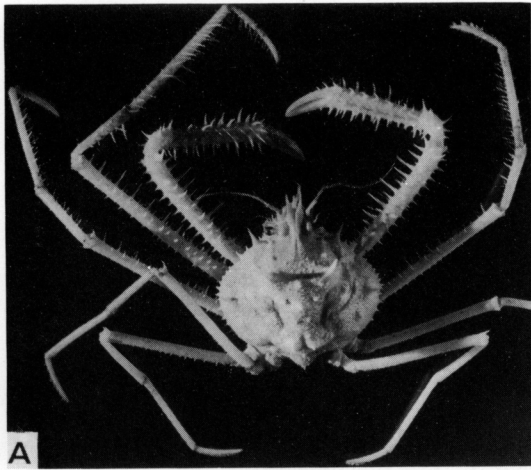




## PLANCHE VI

- A-C, *Cyrtomaia horrida* Rathbun, ♀ 35 × 36 mm, MUSORSTOM II, st. 75 (MP-B7800) : A, vue d'ensemble ; B, céphalothorax ; C, profil.
- D-F, *Cyrtomaia echinata* Rathbun. D-E, ♂ 53 × 57,4 mm, MUSORSTOM II, st. 38 (MP-B7995) : D, céphalothorax ; E, profil ; F, ♂ juv. 15 × 15 mm, MUSORSTOM II, st. 39 (MP-B7798) : céphalothorax (on voit la grande taille des épines branchiales antérieures, cassées chez le spécimen précédent).
- G-H, *Cyrtomaia intermedia* Sakai, ♂ 21,5 × 23,3 mm, Guam, shrimp trap, ELDREDGE coll. : G, céphalothorax ; H, profil.
- I, *Cyrtomaia murrayi* Miers, ♀ 33 × 40 mm, MUSORSTOM I, st. 51 (MP-B7802) : céphalothorax.

PLANCHE VI







## PLANCHE VIII

- A-F, *Sphenocarcinus luzonicus* Rathbun. A-D, holotype, ♂ 20,6 × 19 mm (rostre : 10,5 mm), east coast of Luzon, off San Bernardino Light, *Albatross*, st. 5475 (USNM 48210) : A, vue d'ensemble ; B, carapace ; C, profil ; D, pince ; E, ♂ 20 mm de long (sans le rostre), Sulu Archipelago, Jolo I. and vicinity, *Albatross*, st. 5561 (USNM 49520) : carapace et chélicède ; F, ♀ ovigère 16 × 17 mm, Philippines, MUSORSTOM II, st. 15, 320-326 m (MP-B7991) : vue d'ensemble.
- G-I, *Sphenocarcinus stimpsoni* (Miers), ♂ 12,4 × 11,7 mm, MUSORSTOM II, st. 31, 230-204 m (MP-B7993) : G, vue d'ensemble ; H, profil de la carapace ; I, pinces.