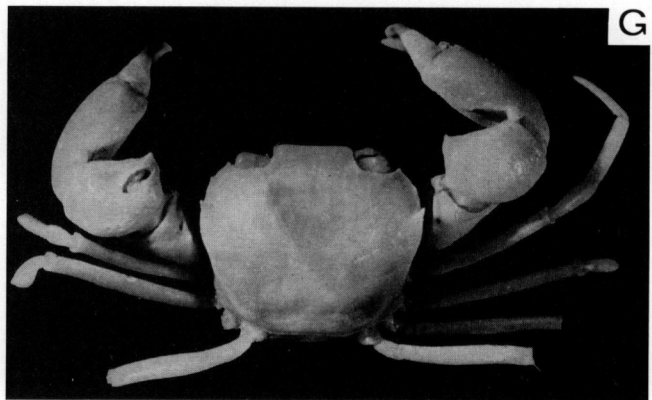
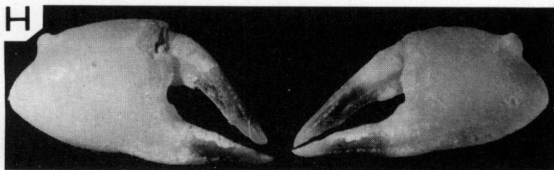
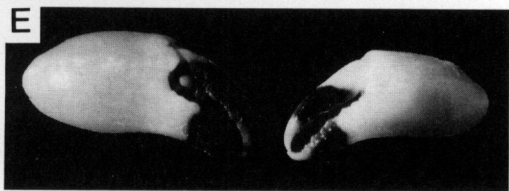
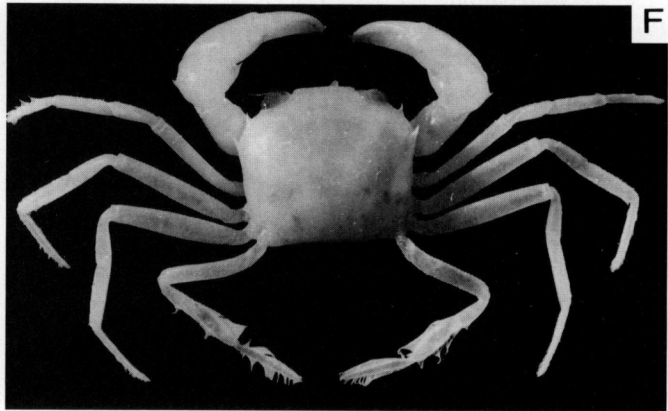
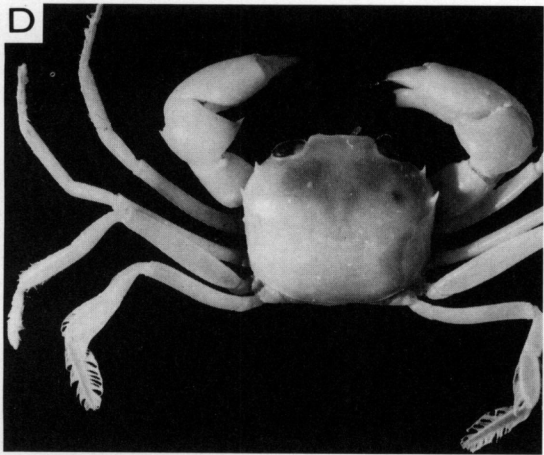
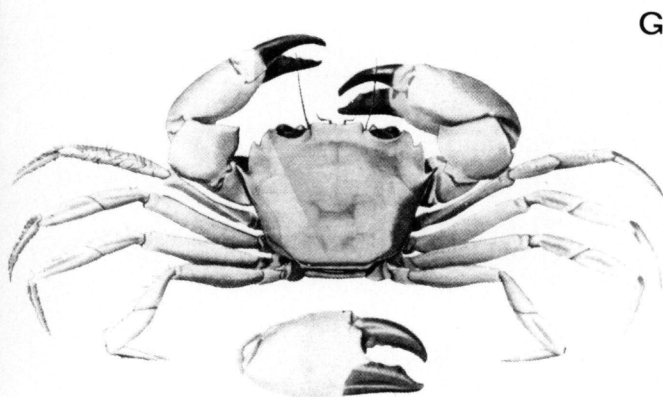
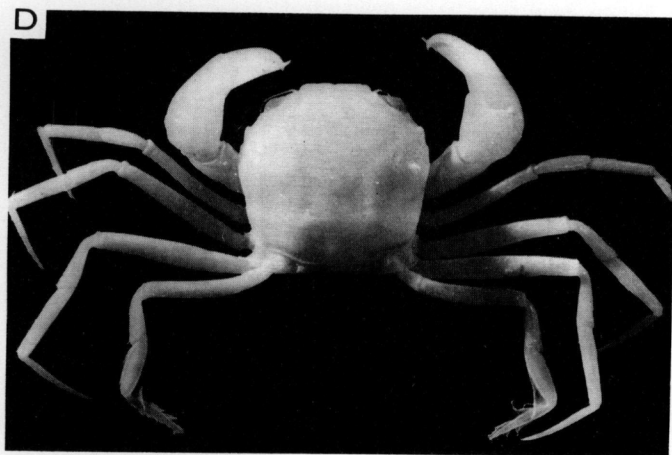
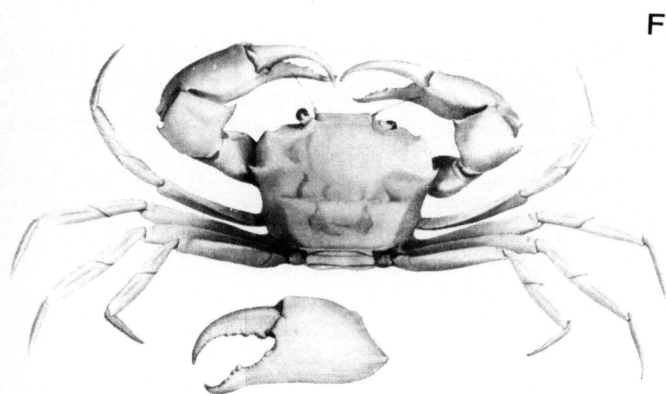
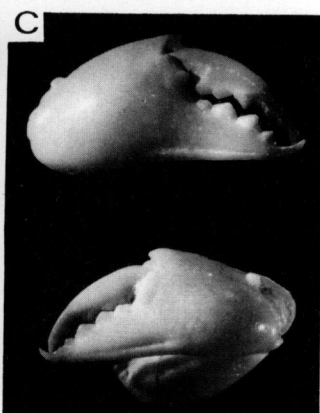
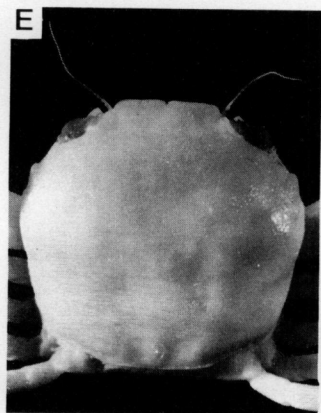
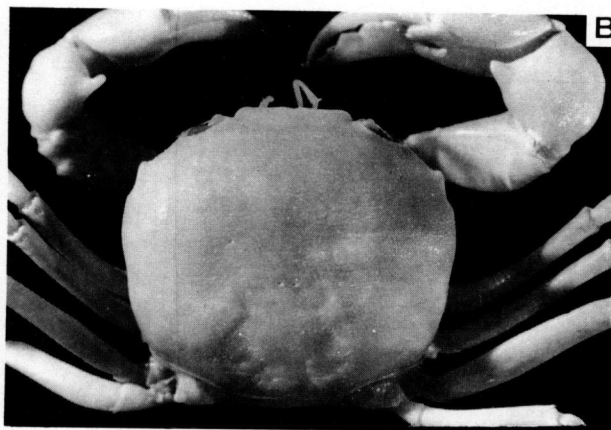
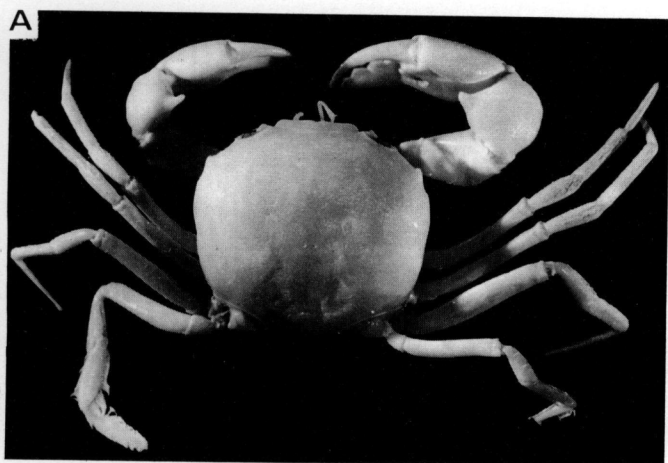


C



## PLANCHE XII

- A-E, *Carcinoplax angusta* Rathbun : A-C, holotype, ♀ 23,8 × 27,6 mm, Philippines, *Albatross*, st. 5376 (USNM 46166) : A, vue d'ensemble ; B, carapace ; C, chélicèdes, face externe. D, E, ♂ juv. 10 × 10,8 mm, même provenance que A-C (USNM 46166) : D, vue d'ensemble ; E, carapace.
- F, *Carcinoplax victoriensis* Rathbun, holotype, ♂ 24,4 × 34 mm, Victoria : vue d'ensemble et chélicèpe gauche (d'après RATHBUN, 1923, pl. 19, fig. 1, 2).
- G, *Carcinoplax meridionalis* Rathbun, holotype, ♂ 21,7 × 30,2 mm, Victoria : vue d'ensemble et chélicèpe droit (d'après RATHBUN, 1923, pl. 18, fig. 1, 2).



## PLANCHE XIII

- A-E, *Carcinoplax longispinosa* Chen : A-C, ♂ 13 × 19 mm, MUSORSTOM 1, st. 47 (MNHN-B 10187) : A, vue d'ensemble (photographie C. VADON) ; B, carapace ; C, chélicèdes, face externe. D, ♀ 12,8 × 18,7 mm, MUSORSTOM 1, st. 49 (MNHN-B 10206) : carapace. E, ♀ 9,2 × 13,5 mm, Madagascar, chalutage 135 (MNHN-B 10208) : vue d'ensemble.
- F, *Carcinoplax eury sternum* Guinot & Richer de Forges, holotype, ♂ 31,4 × 47 mm, Nouvelles-Hébrides (MNHN-B 6835) : vue d'ensemble.
- G, *Carcinoplax crosnieri* Guinot & Richer de Forges, holotype, ♂ 31,7 × 38 mm, îles Loyauté (MNHN-B 6834) : vue d'ensemble.

