

FIG. 32. — **a-b**, *Bathymunida recta* sp. nov., male holotype 5.0 mm (MNHN-Ga 3583) from MUSORSTOM 7, Stn DW 510; **c**, *B. sibogae* van Dam, 1938, male 4.3 mm (MNHN-Ga 3591) from MUSORSTOM 5, Stn CP 309; **d**, *Heteronida aspinostris* (Khodkina, 1981), male 3.2 mm (MNHN-Ga 3630) from SMIB 4, Stn DW 36; **e**, same, ovigerous female 3.8 mm (MNHN-Ga 3623) from CHALCAL 2, Stn CP 21; **f**, same, male (MNHN-Ga 3626) from CHALCAL 2, Stn DW 74.

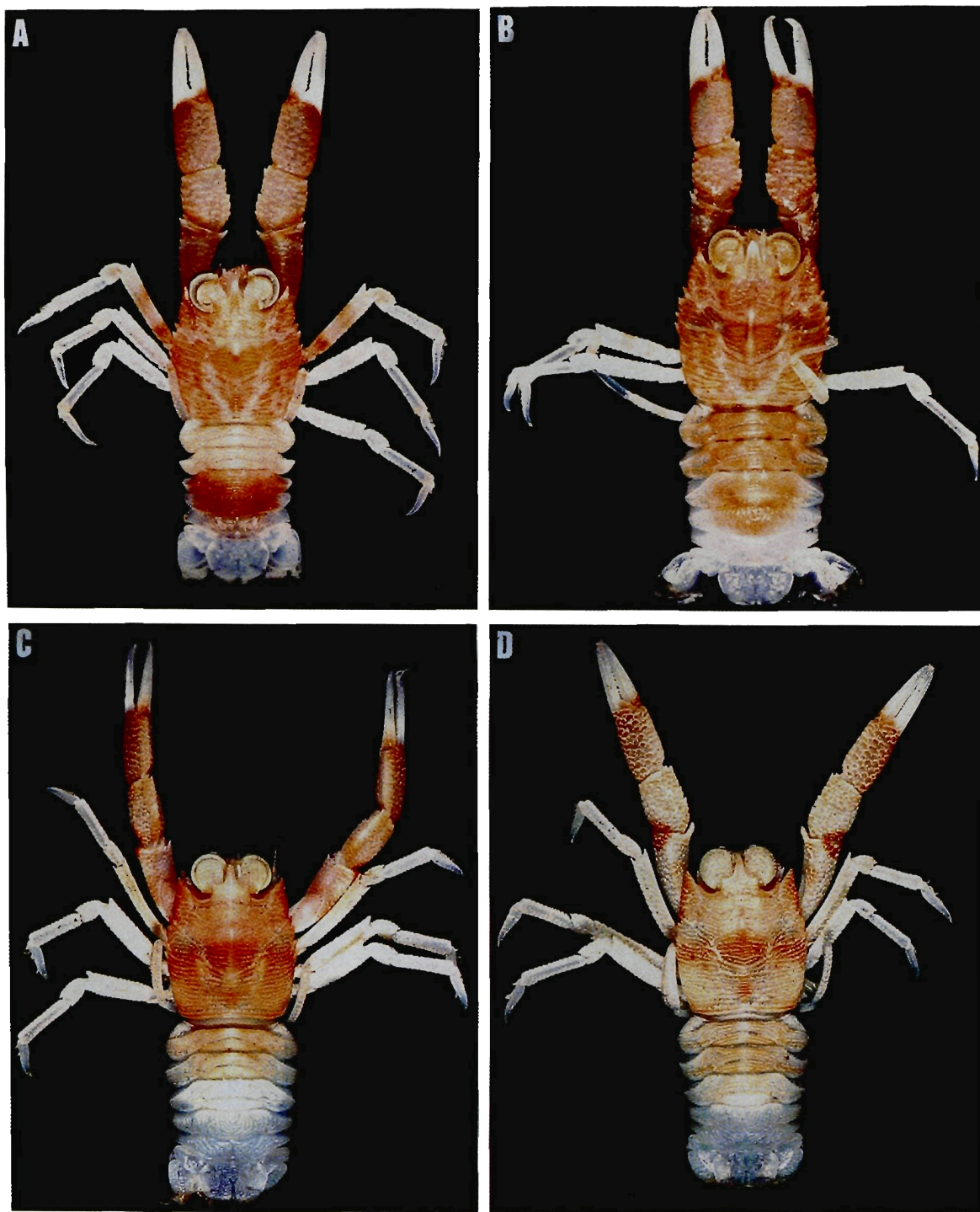


FIG. 33. — a-b, *Onconida alaini* sp. nov., MUSORSTOM 6, Stn CP 464 : a, male paratype 5.7 mm (MNHN-Ga 3597); b, ovigerous female paratype 5.8 mm (MNHN-Ga 3597); c-d, *O. modica* sp. nov., MUSORSTOM 7, Stn CP 606 : c, female holotype 6.0 mm (MNHN-Ga 3605); d, ovigerous female paratype 5.9 mm (MNHN-Ga 3606).



FIG. 34. — a, *Neonida grandis* sp. nov., male holotype (MNHN-Ga 3771) from MUSORSTOM 8, Stn CP 1107; b, *Onconida tropis* sp. nov., ovigerous female paratype 6.2 mm (MNHN-Ga 3773) from MUSORSTOM 7, Stn DW 594; c, *O. gemini* sp. nov., ovigerous female holotype 5.2 mm (MNHN-Ga 3774) from GEMINI, Stn DW 51; d, *O. prostrata* sp. nov., left, male holotype 6.2 mm (MNHN-Ga 3608) from MUSORSTOM 7, Stn DW 594; right, female paratype 6.3 mm (MNHN-Ga 3609).