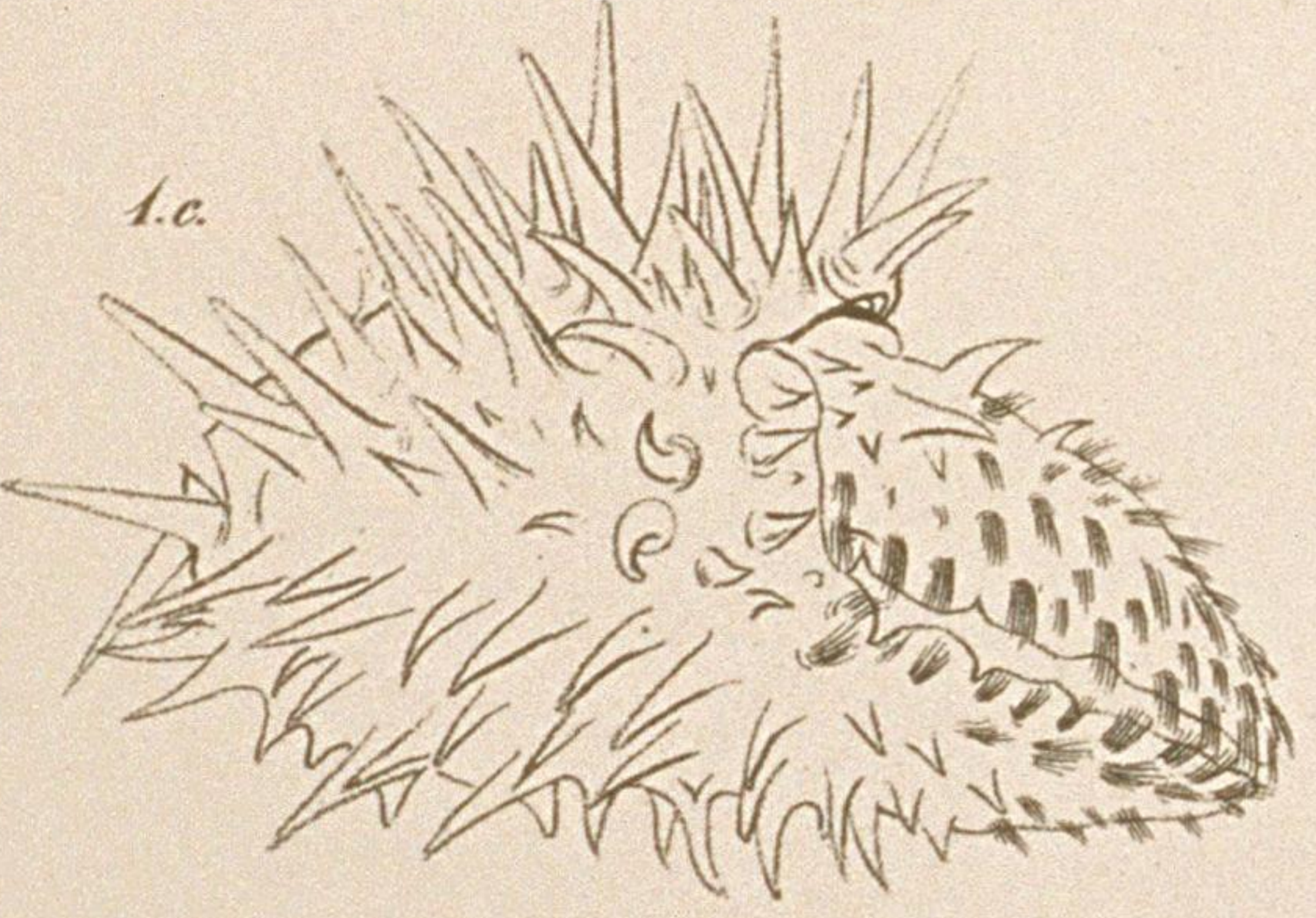
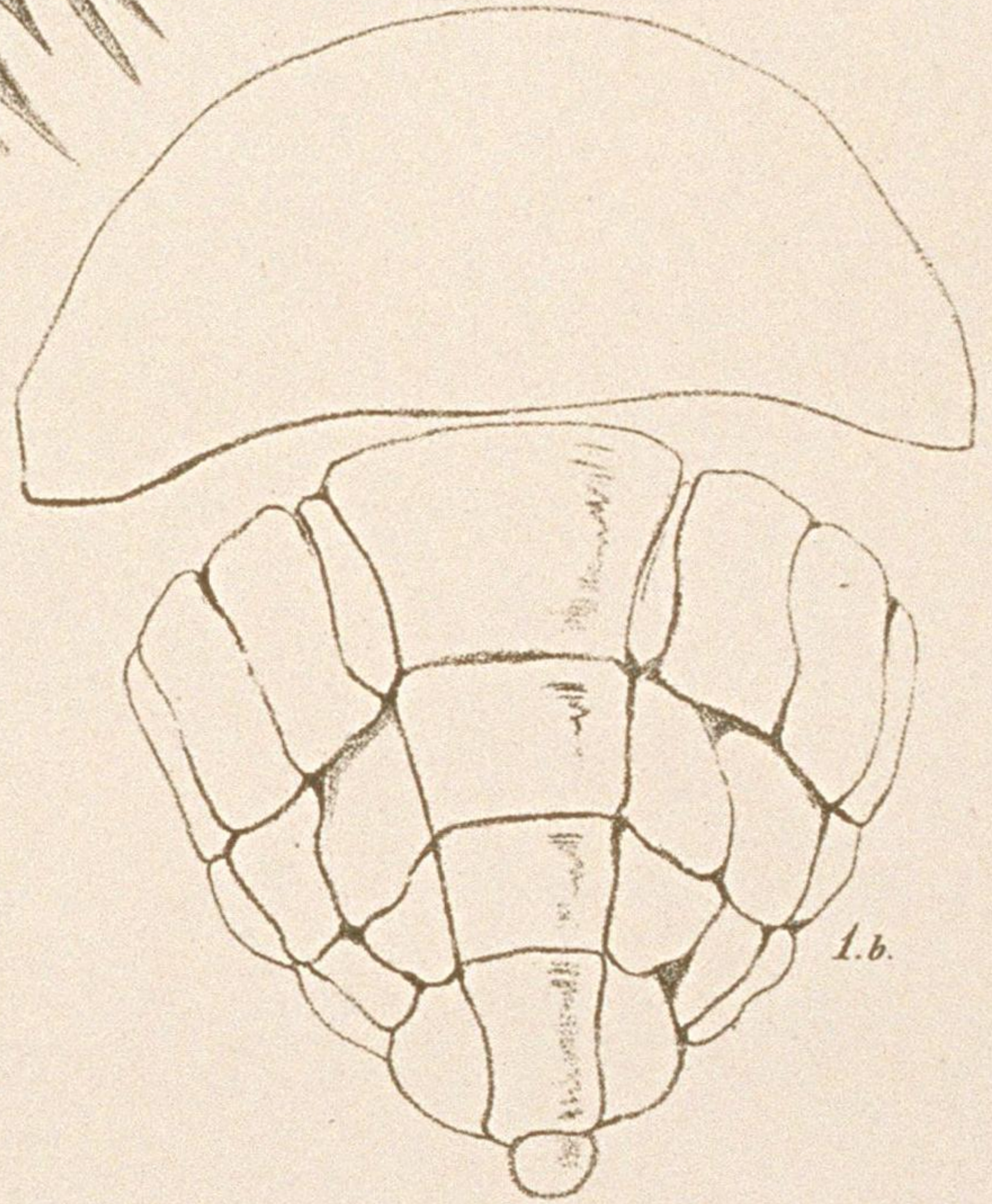
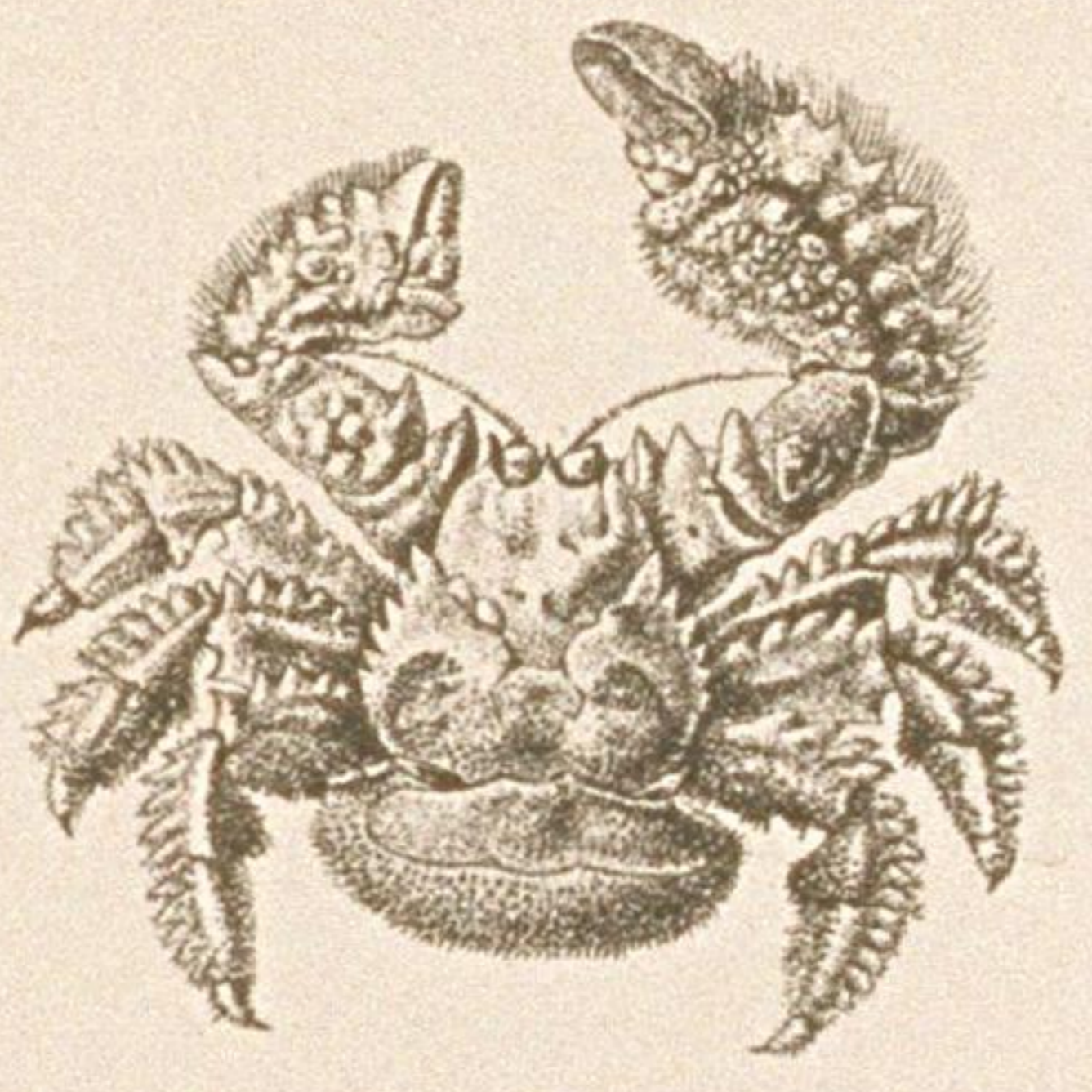
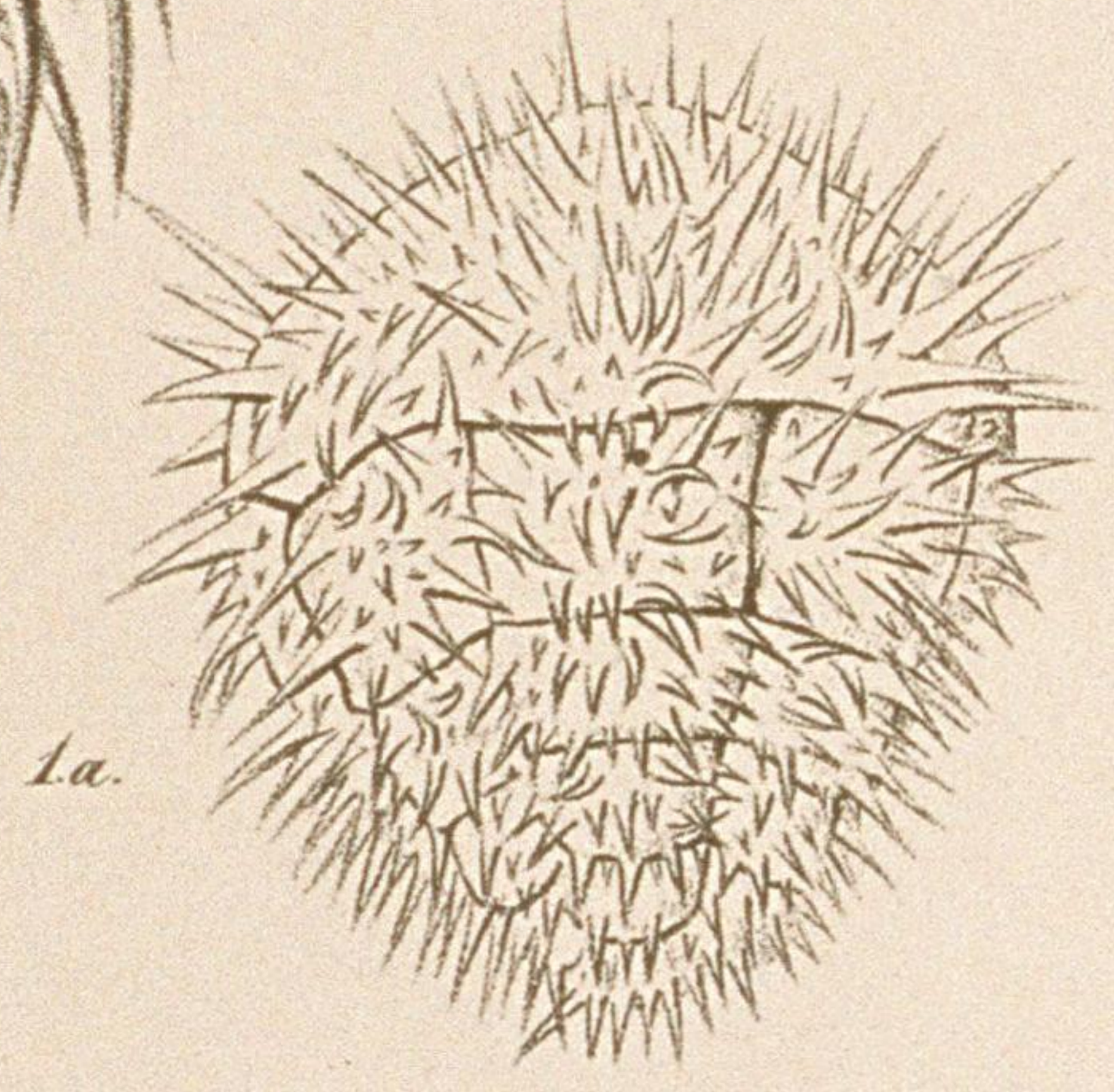


LITHODES

LITHODES *camschatica*, Tilesius.

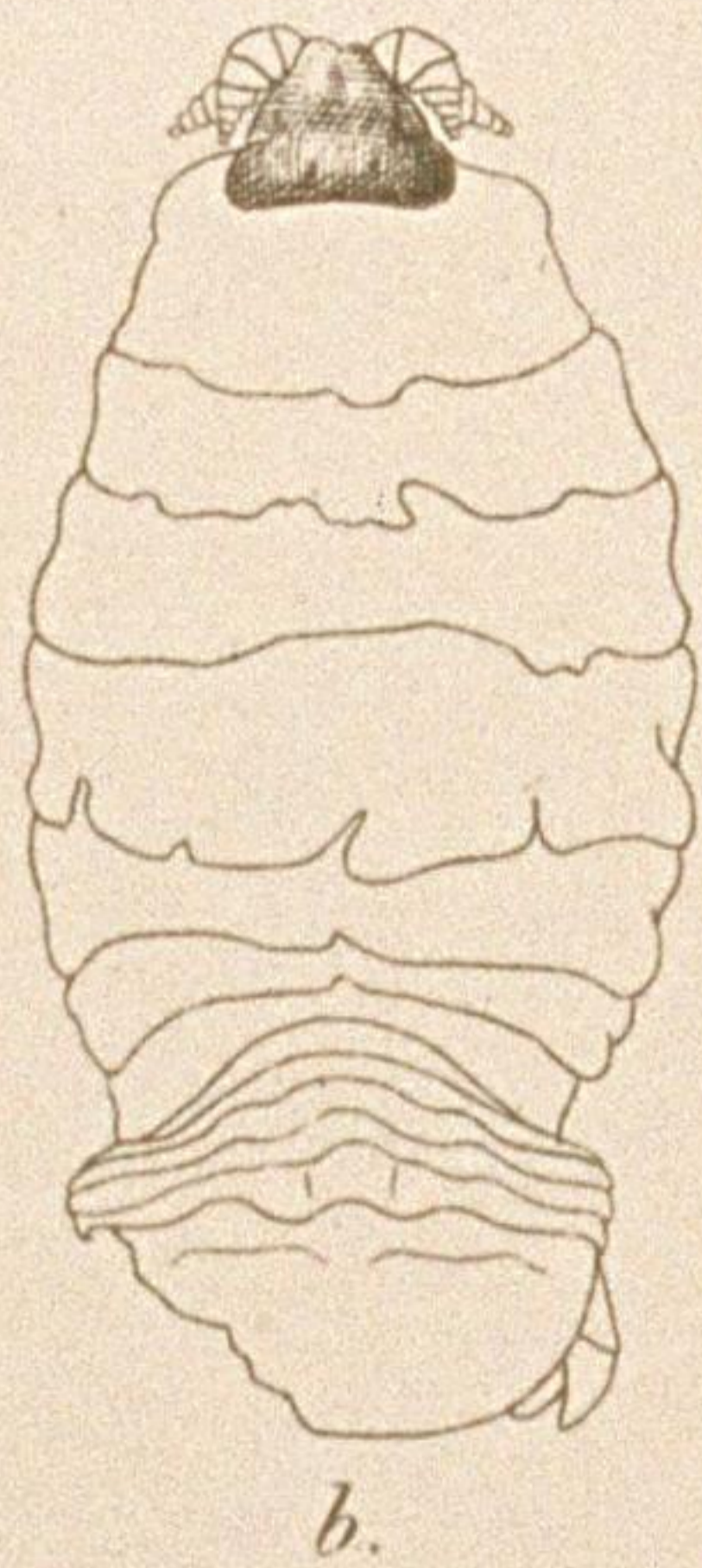
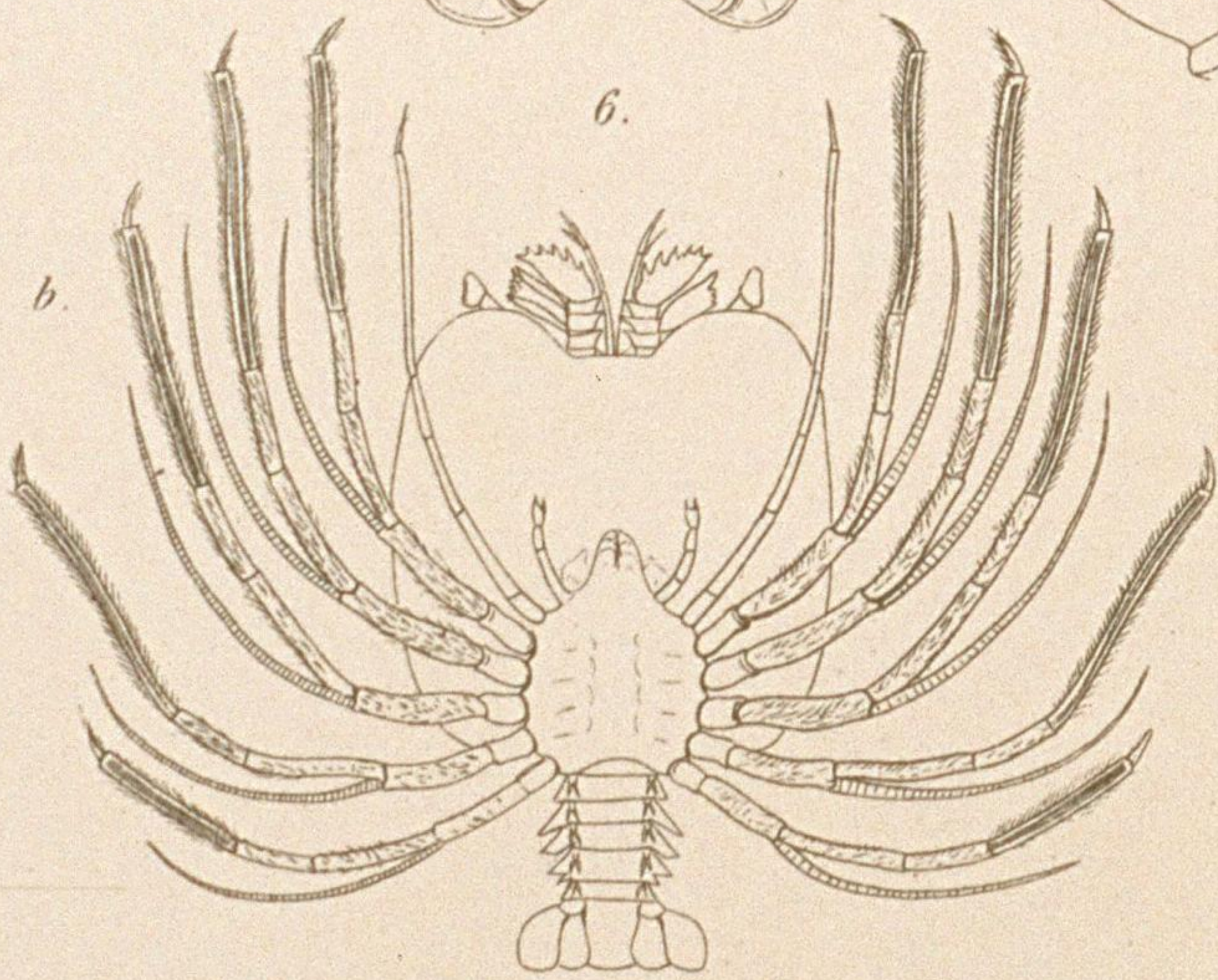
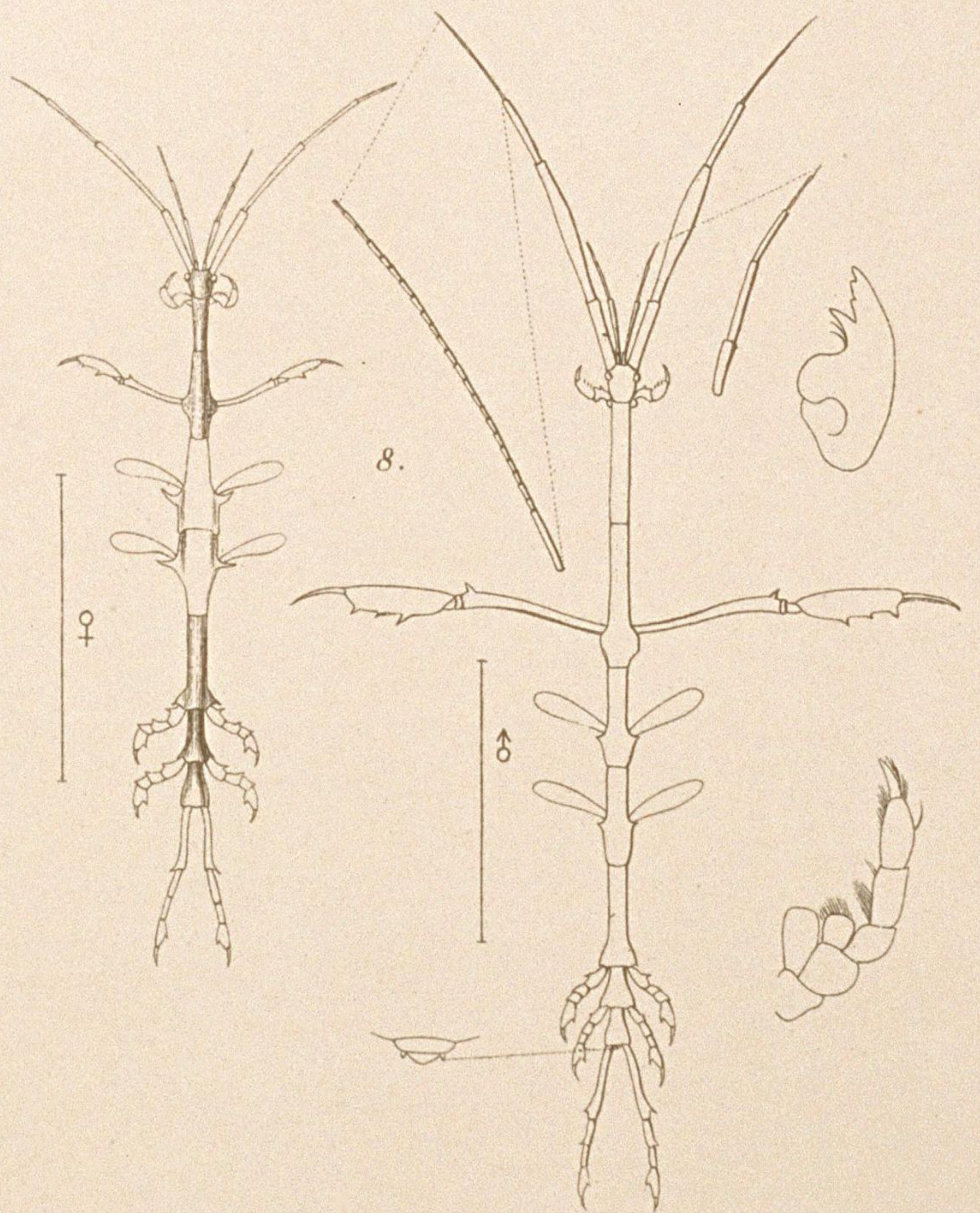
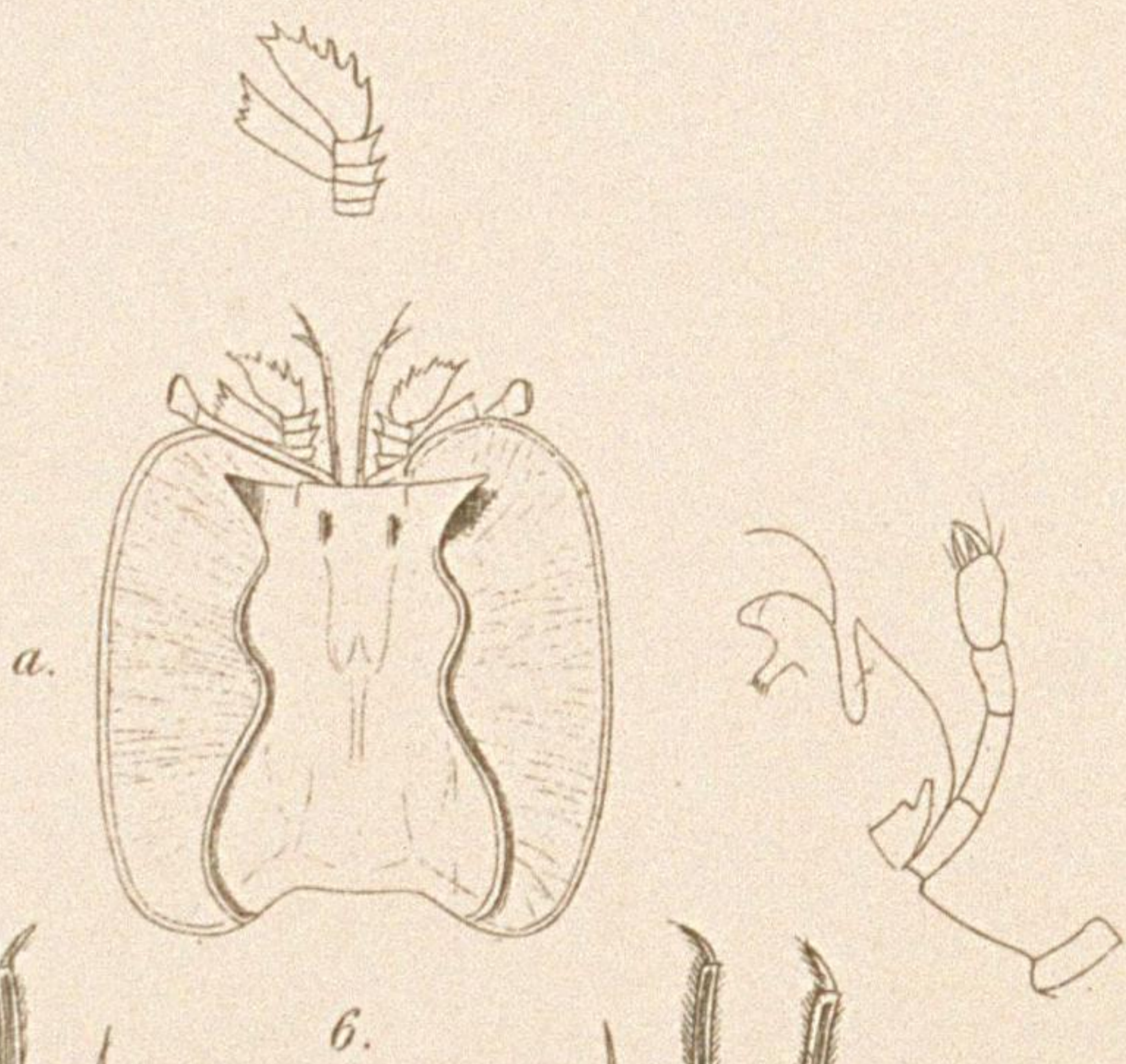
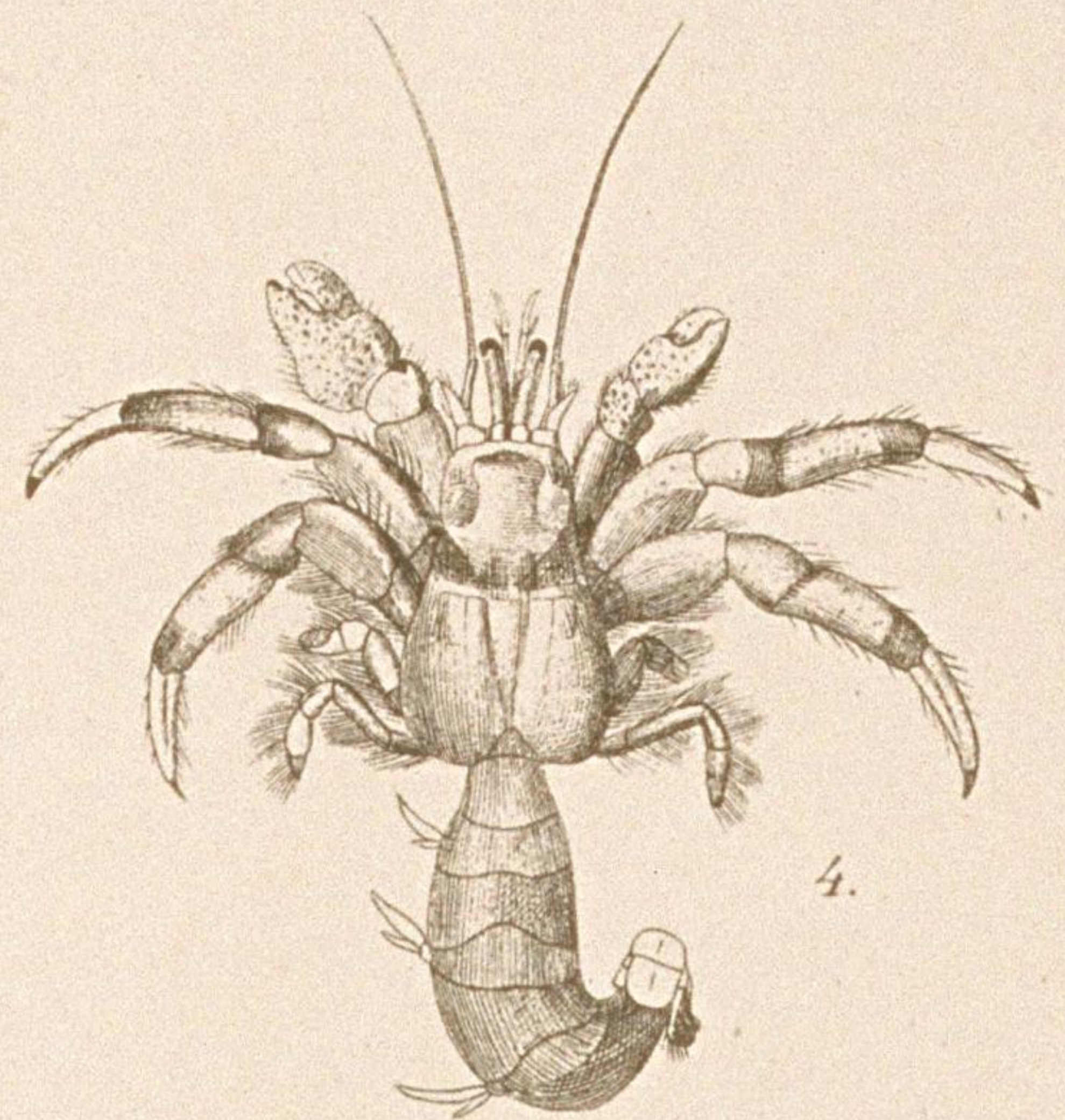
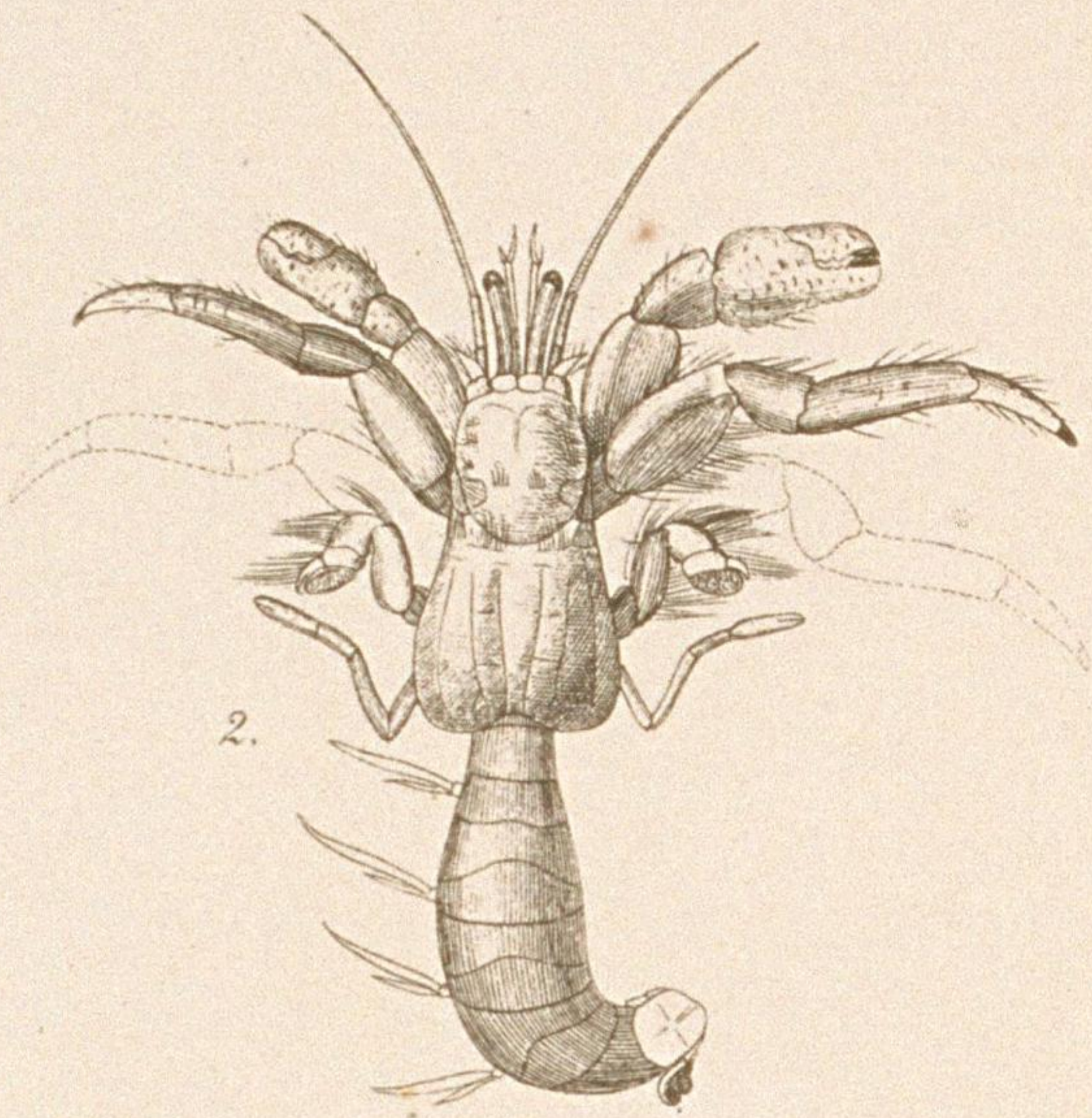
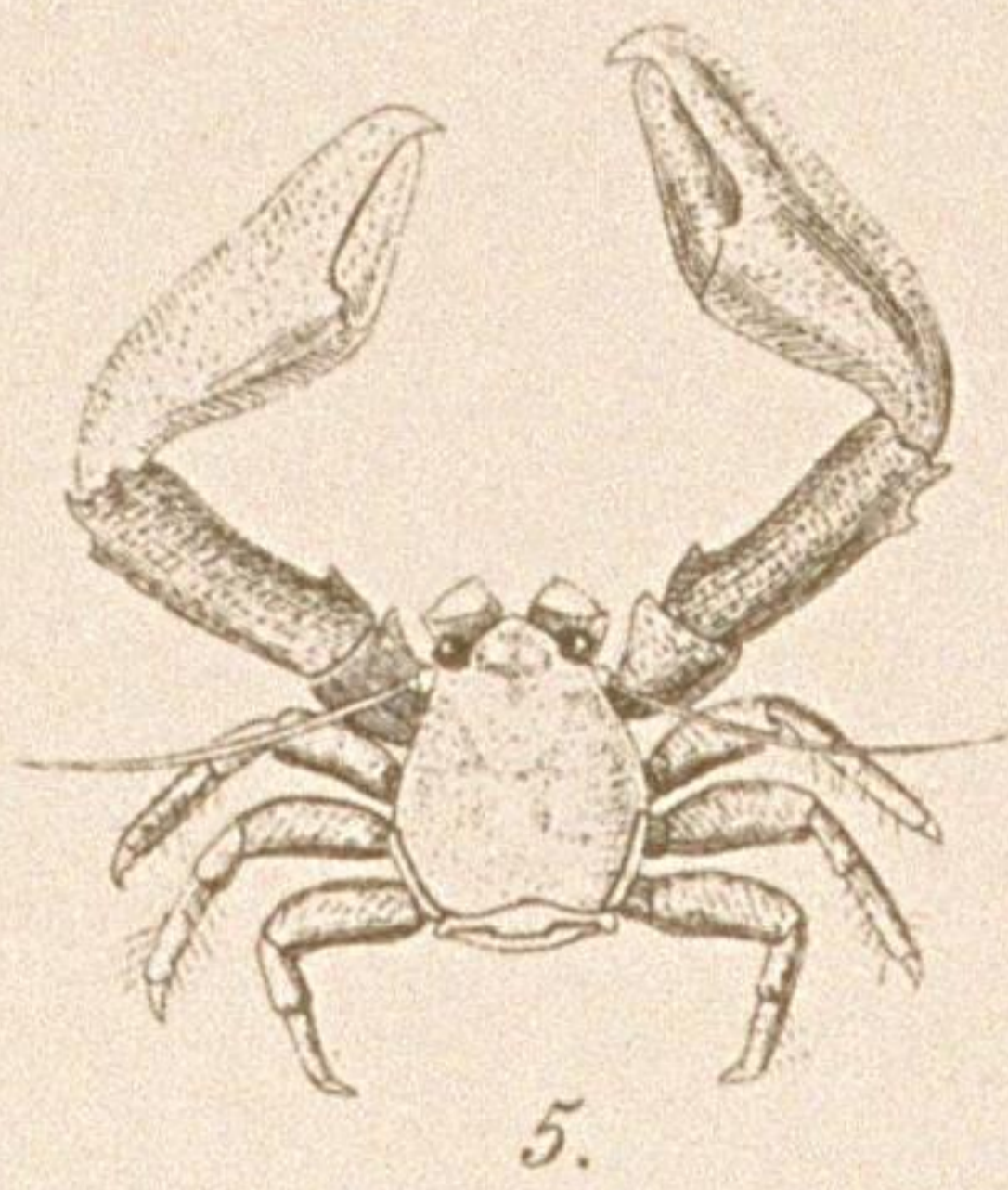
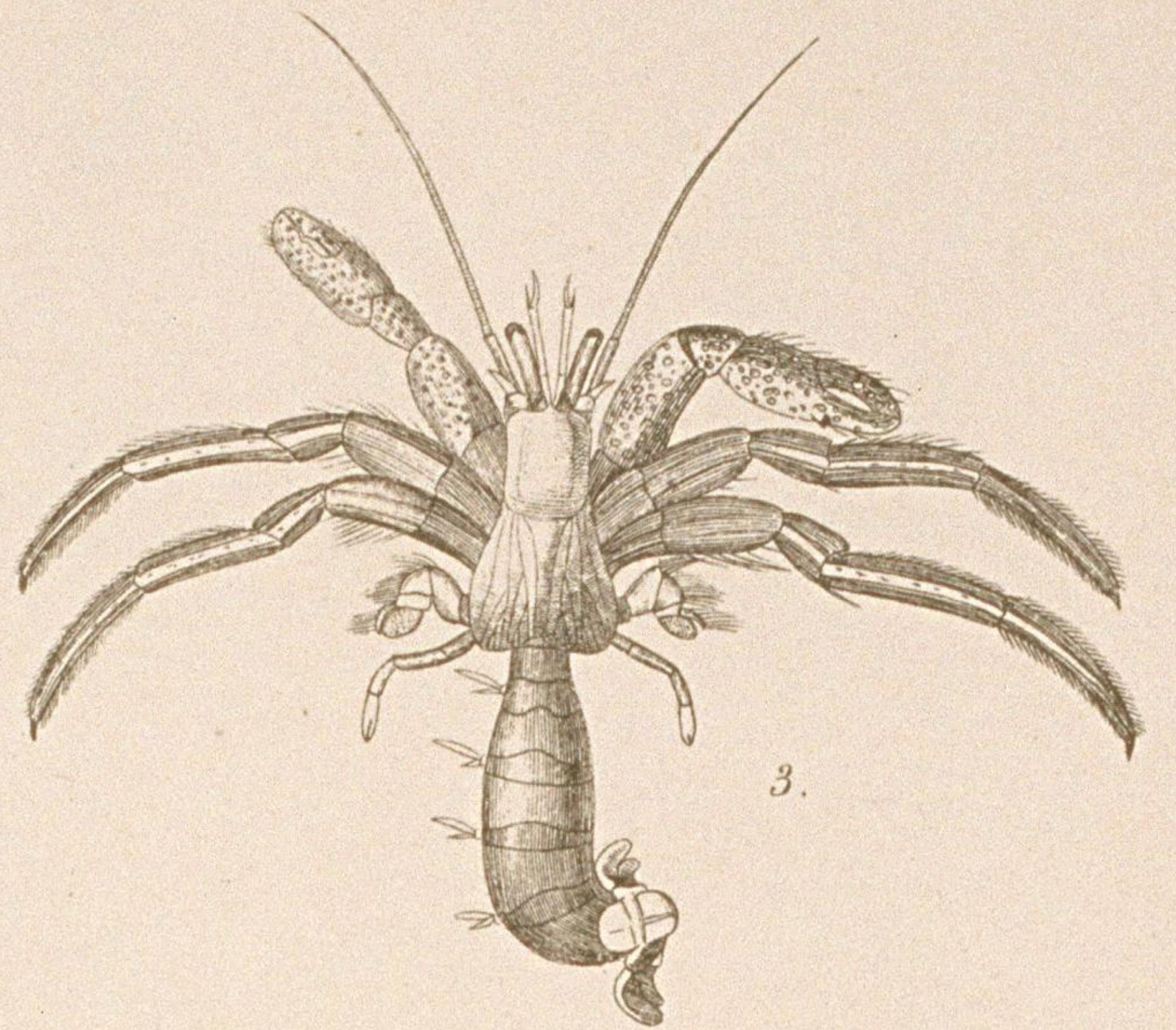
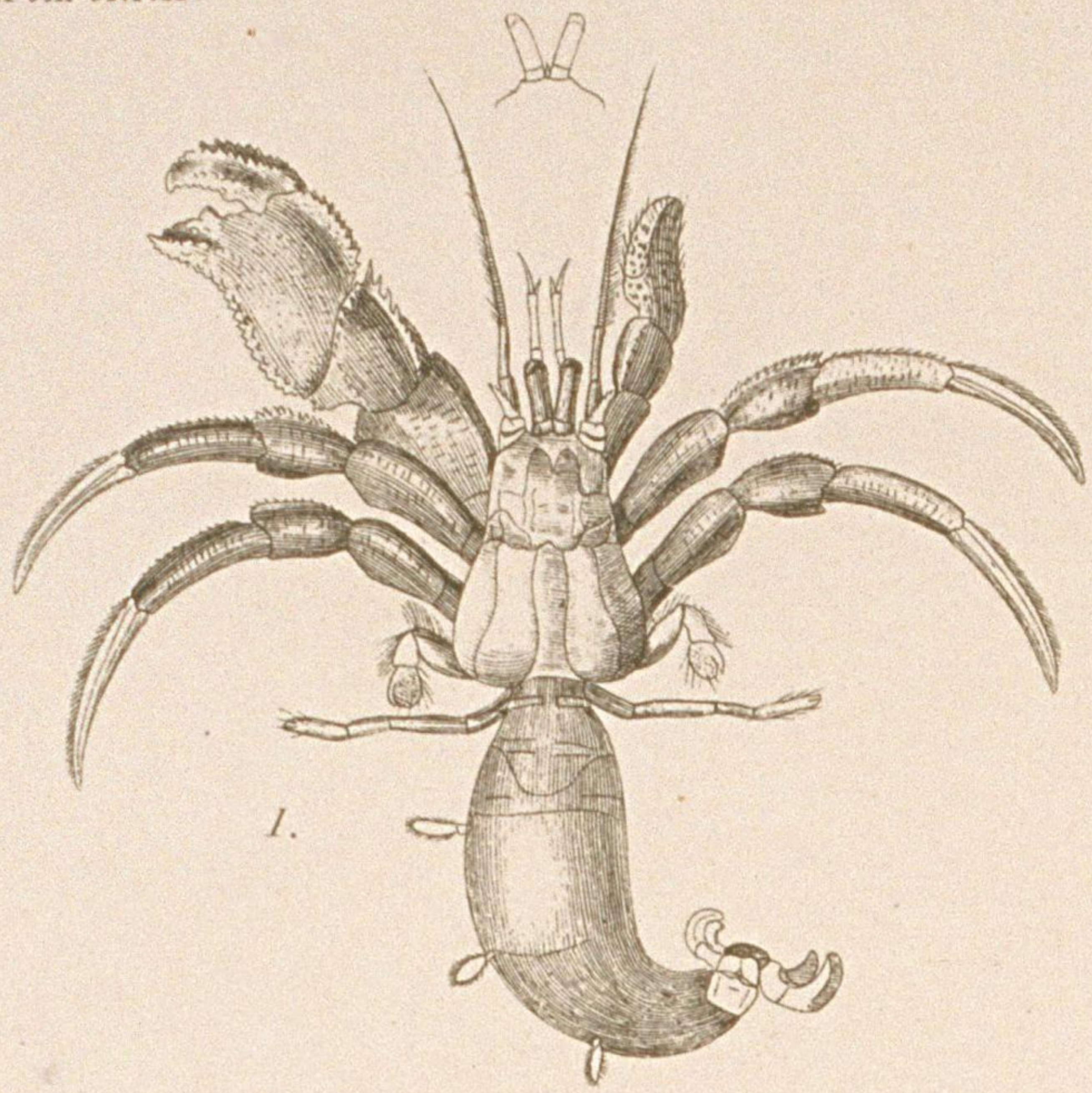


LITHODES ET LOMIA.

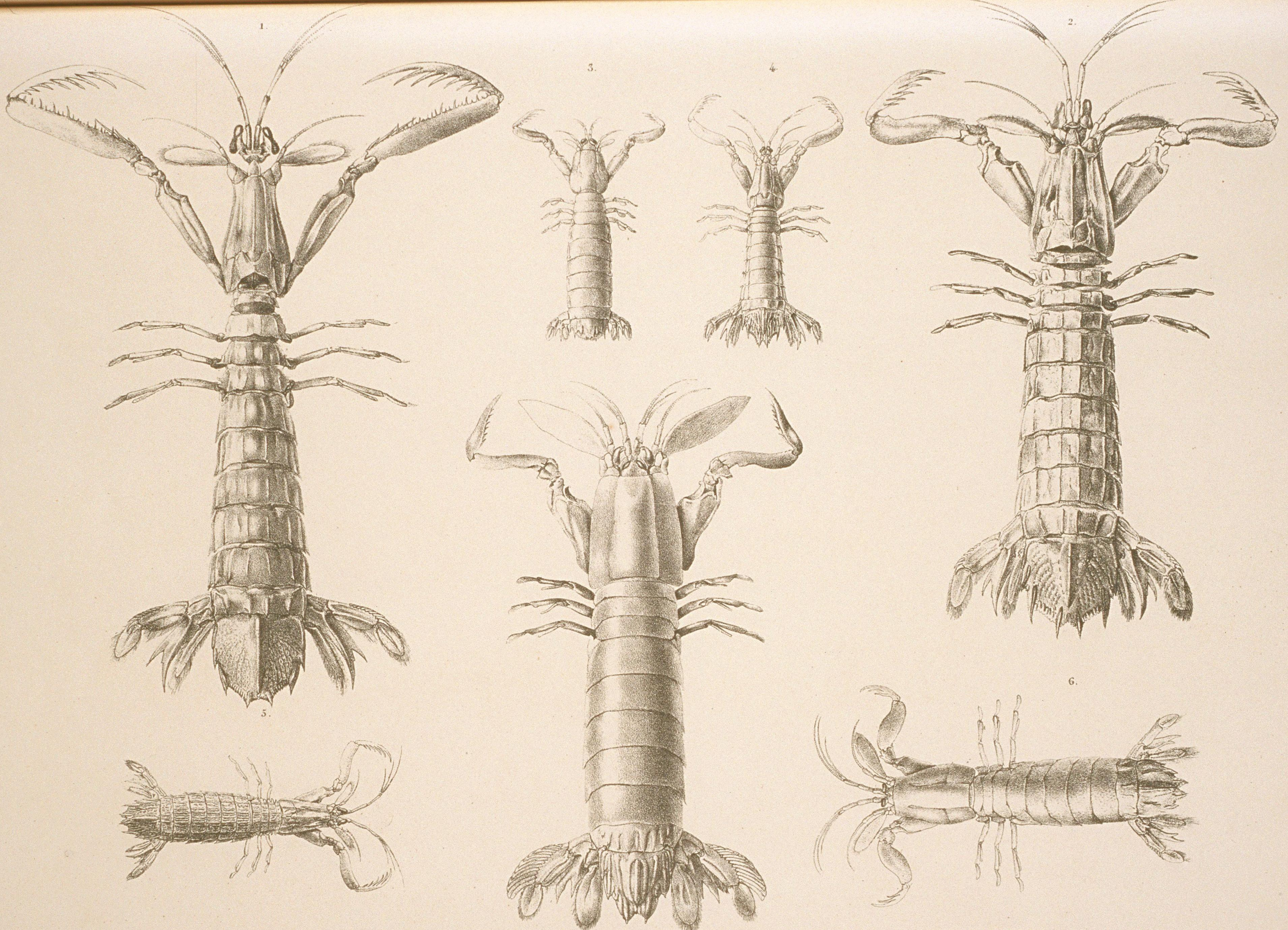
1. LITHODES *Histrix*, von Siebold; a, b: abdomen; c: chela dextra. — LOMIA *dentata*, n. sp.



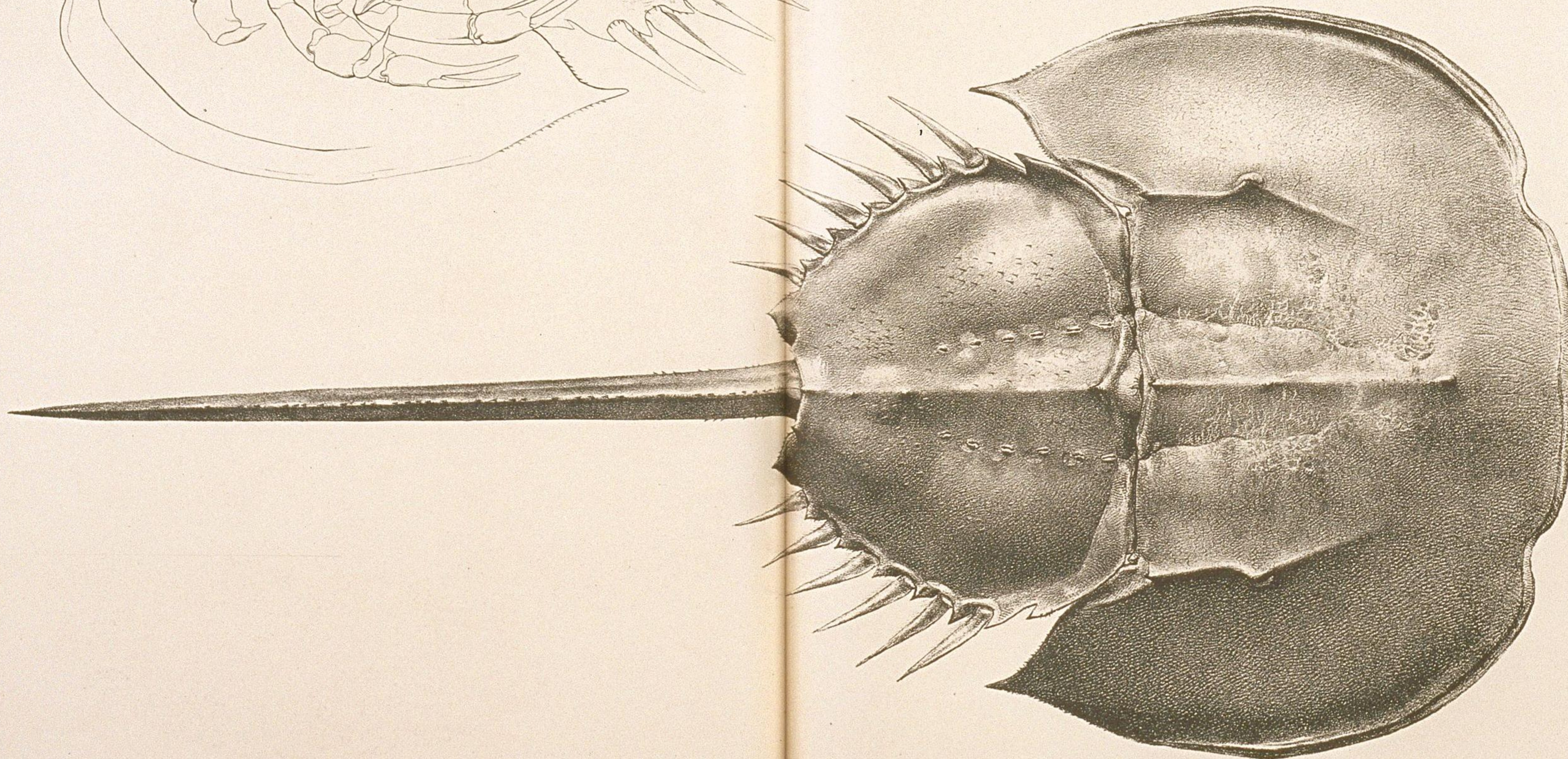
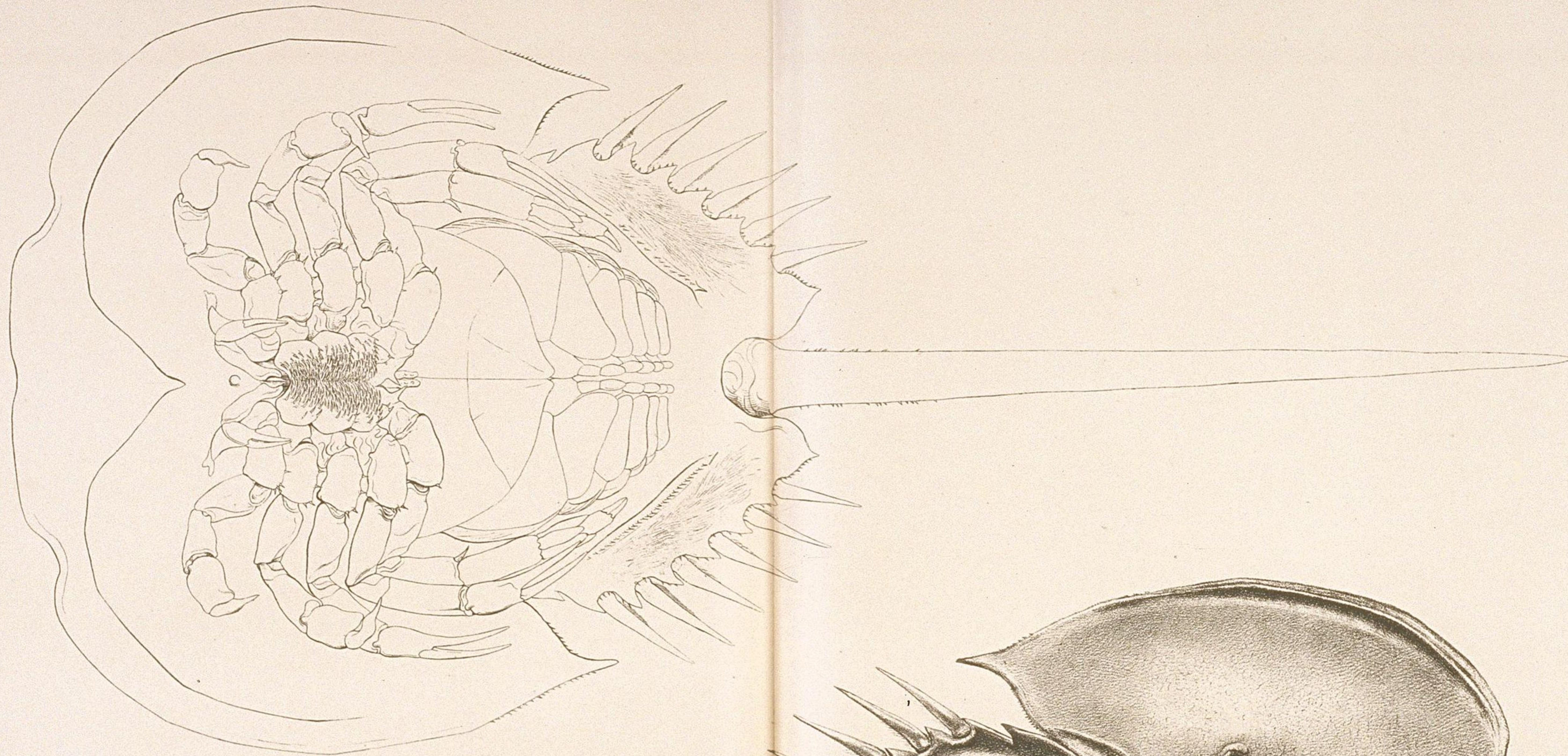
1. PAGURUS striatus, Latr. 2. P. spuriger, n. 3. a. spura 3 P. impressus, n. 4 P. asper, n. 5 P. lanuginosus, n.  
 6 P. spinifrons, n. 7. P. bimaculatus, n.



1. PAGURUS *Edwardsii*, n. sp. 2. *P. inaequalis*, n. sp. 3. *P. longitarsus*, n. sp. 4. *P. bimaculatus*, n. sp. 5. PORCELLANA *japonica*, n. sp.  
 6. PHYLLOSOMA *Guerinii*, n. sp. 7. CYMOTHOA *trigonocephala*, Leach. 8. CAPRELLA *krojeri*, n. sp.



1. *SQUILLA Harpor*. n. sp. 2. *S. oratoria*. n. sp. 3. *S. latifrons*. n. sp. 4. *S. fasciata*. n. sp. 5. *S. costata*. n. sp. 6. *S. Empusa*. n. sp. 7. *GONODACTYLUS japonicus*. n. sp.

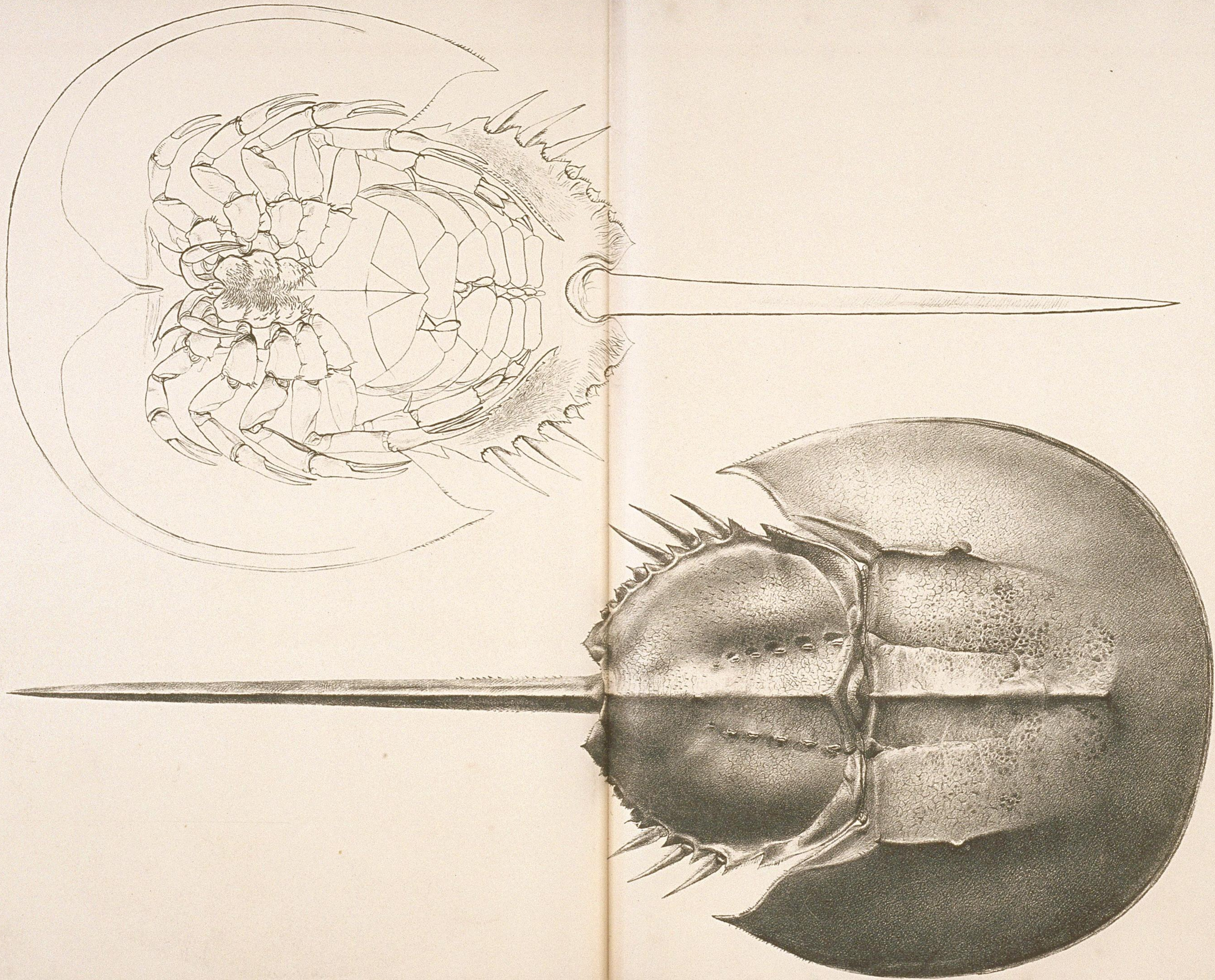


H Hoffmeister in lep. del.

LIMULUS longipes Van der Hoever. (Mas.)

A van der Grint et C<sup>o</sup> imp.





H. Hoffmeister in. lep. del.

LIMULUS longipinna, von der Hoober. (Femina.)

A. van der Grint et C.º impo.