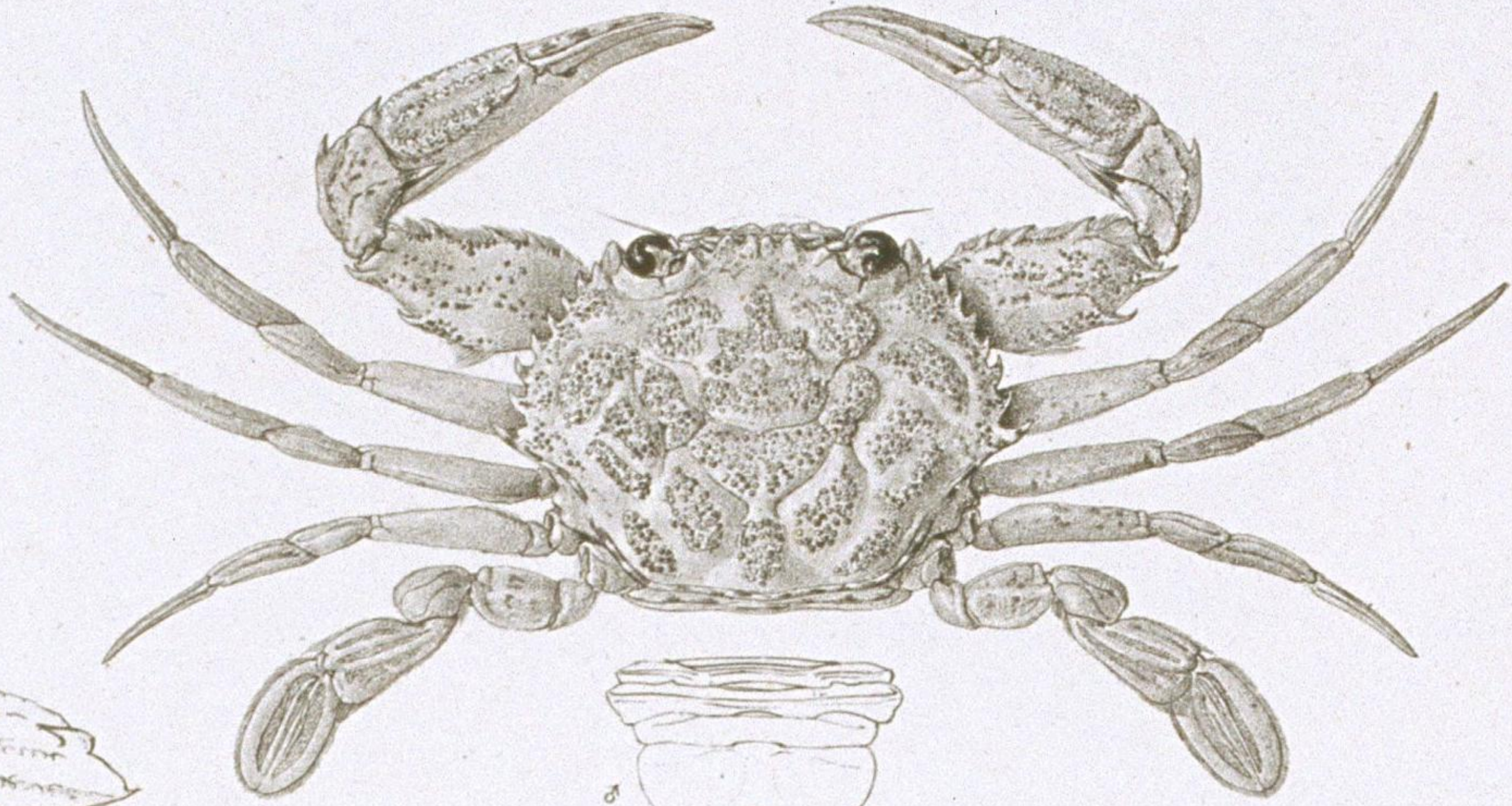
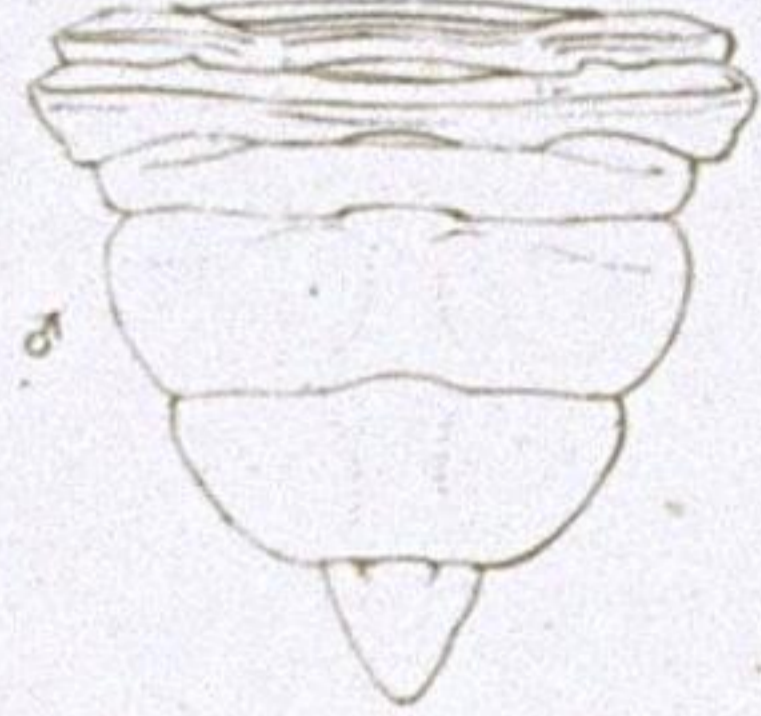




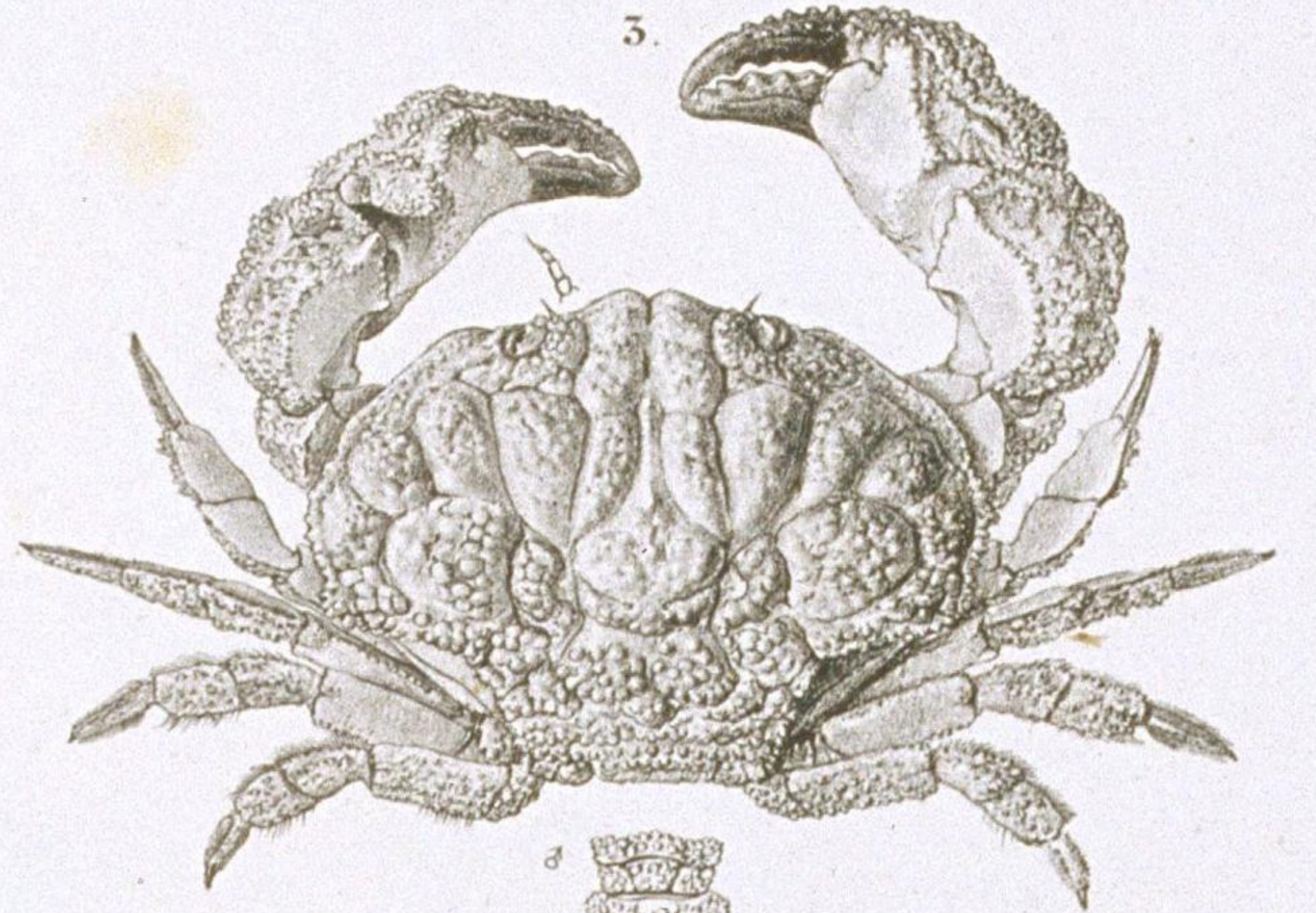
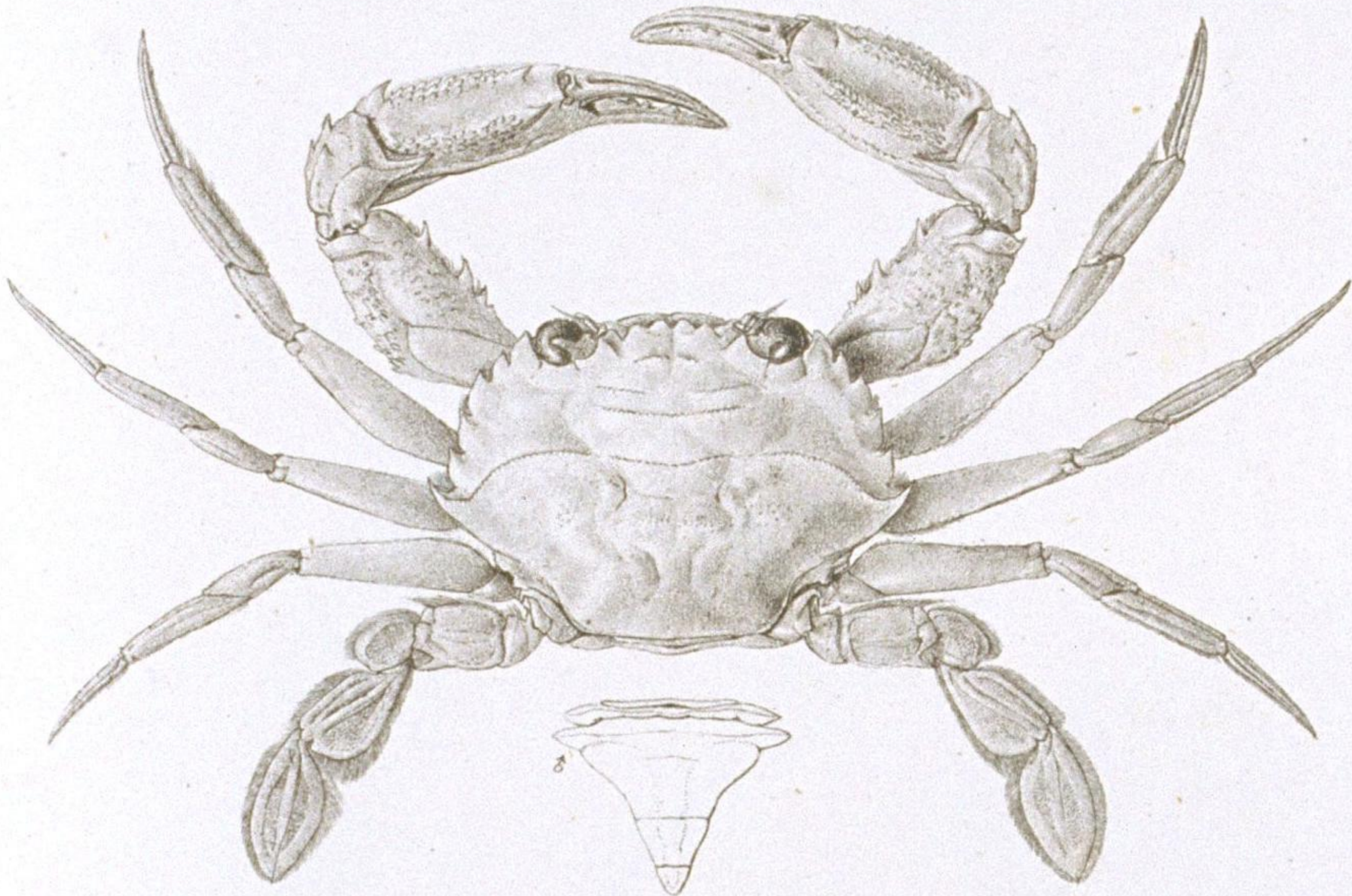
1. $\frac{4}{2}$



2. $\frac{3}{2}$

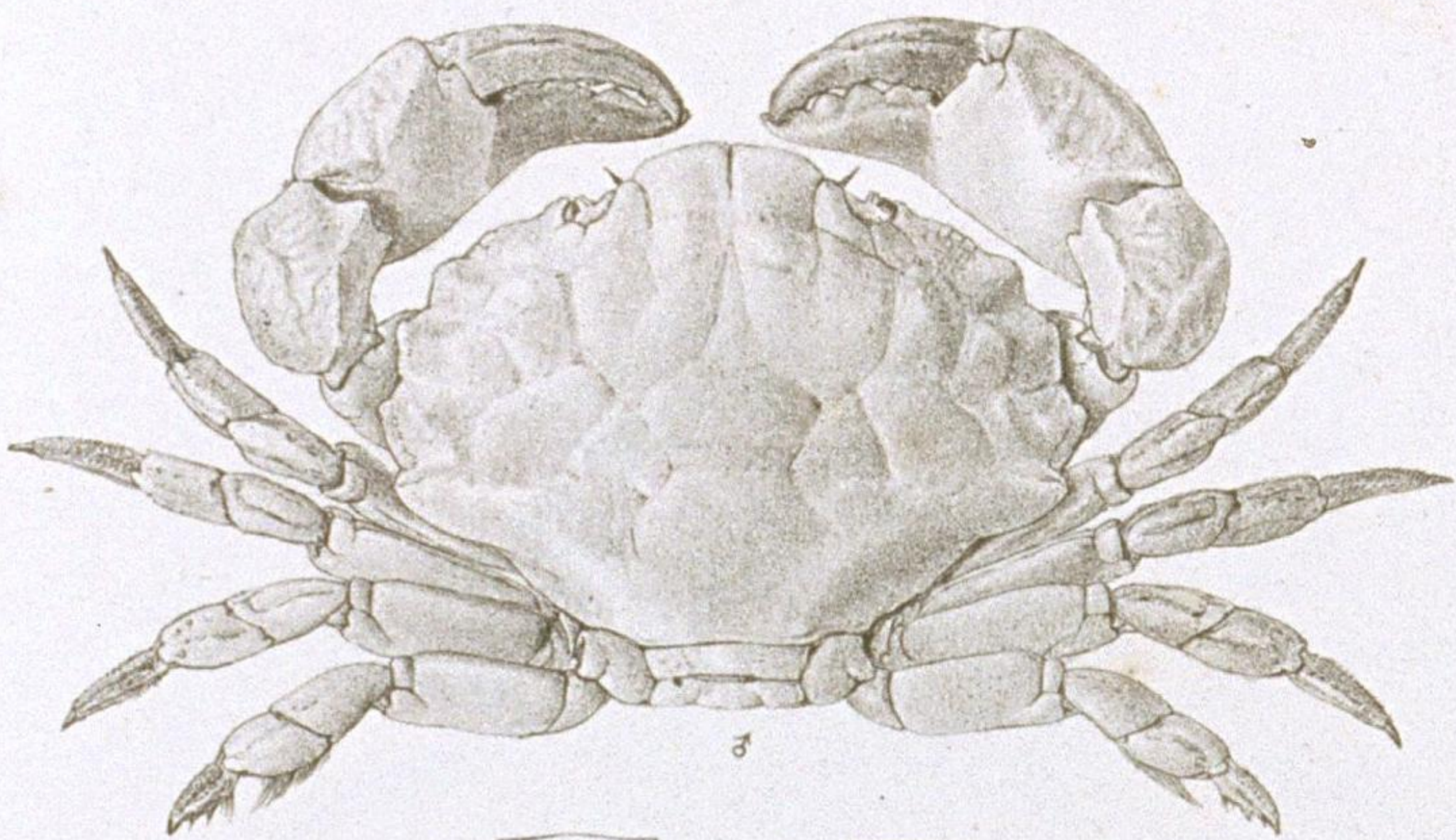


3.

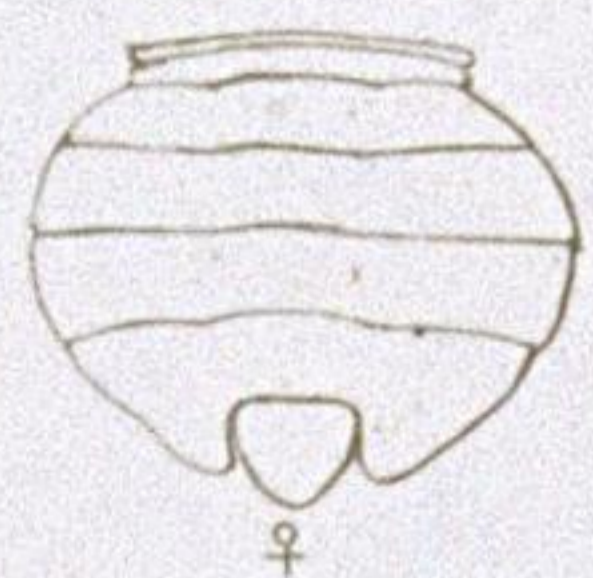
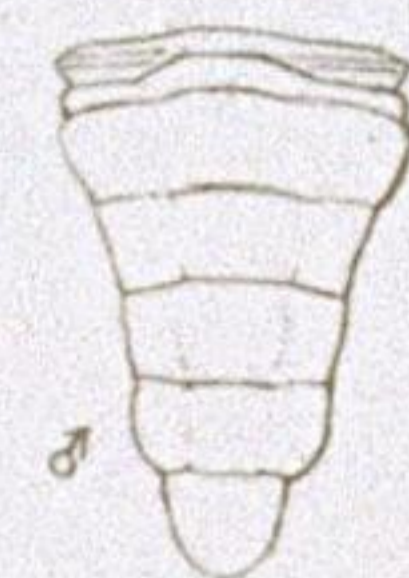
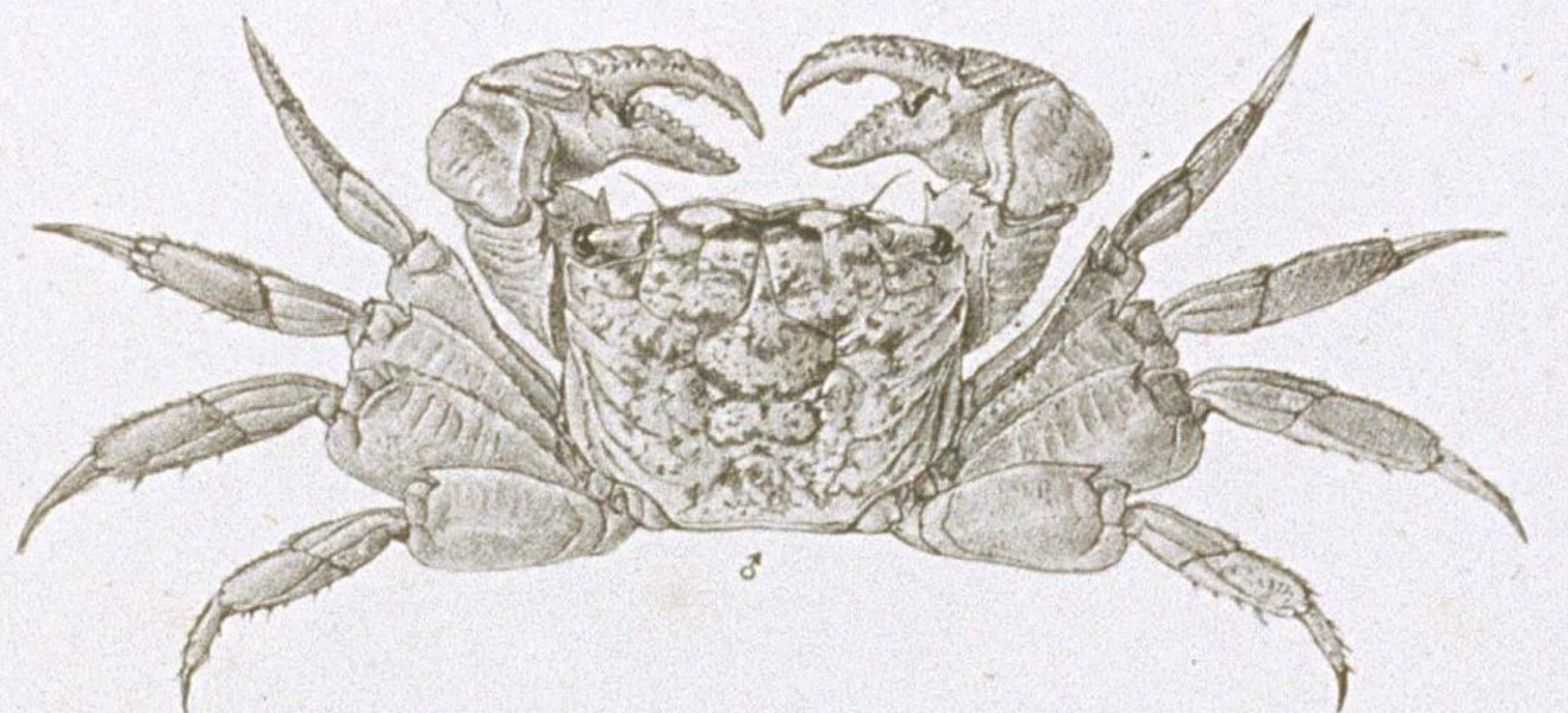


5.

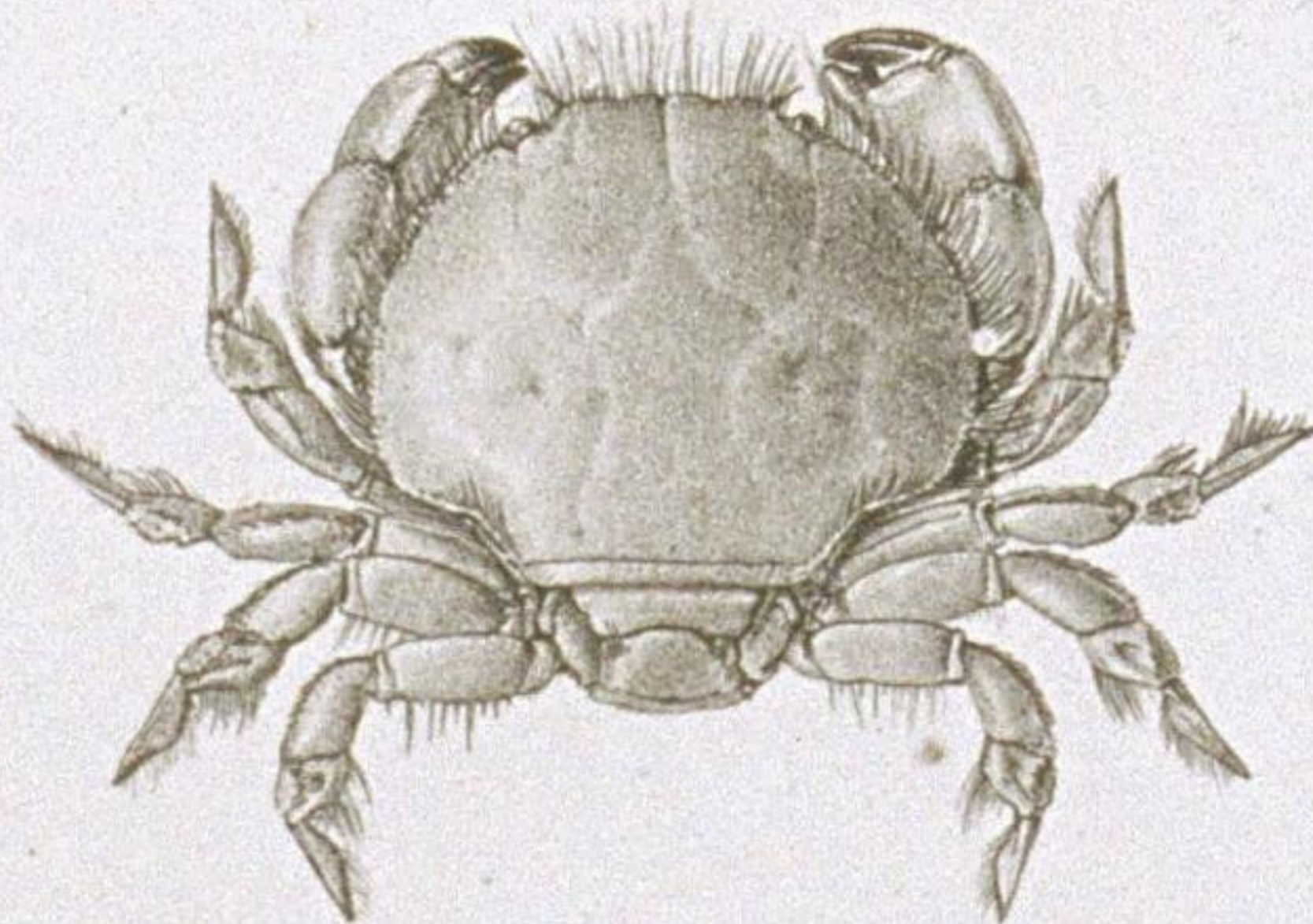
4. $\frac{6}{2}$



5.

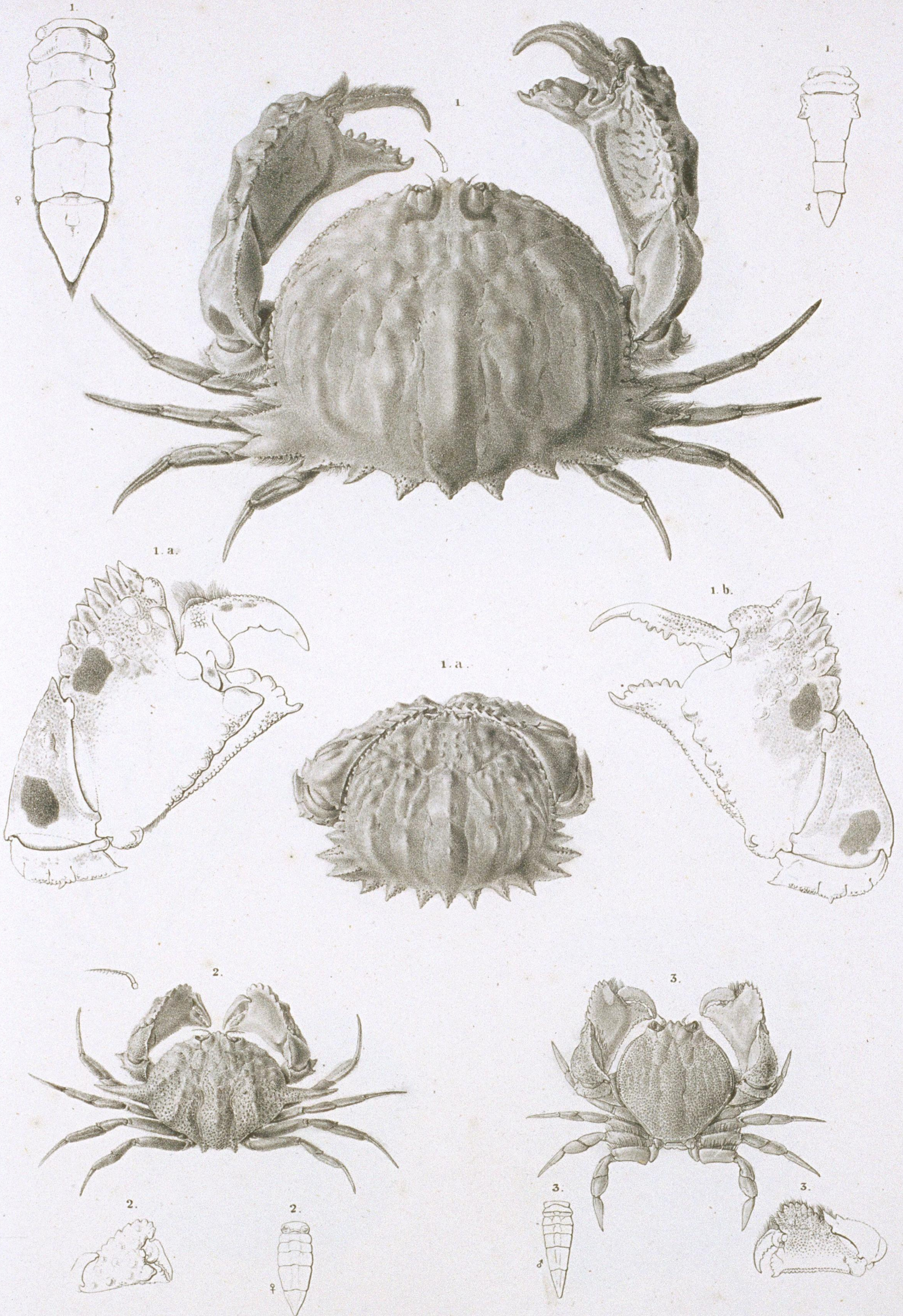


6. $\frac{4}{2}$



PORTUNUS. CANCER. GRAPSUS.

- 1. PORT. (Amphitrite) *Gladiator* Fabr. variet.
- 2. PORT. (Charybdis) *truncatus* Fabr. variet.
- 3. CANC. (Xantho) *granulatus* n.
- 4. CANC. (Xantho) *truncatus* n.
- 5. GRAPS. (Pachysoma) *affinis* n.
- 6. CANC. (Xantho) *integer* n.



CALAPPA. MURSIA.

1. CAL. (Lophos) philargius Linn.

2. MURSIA armata n.

3. CYCLOËS granulosa n.



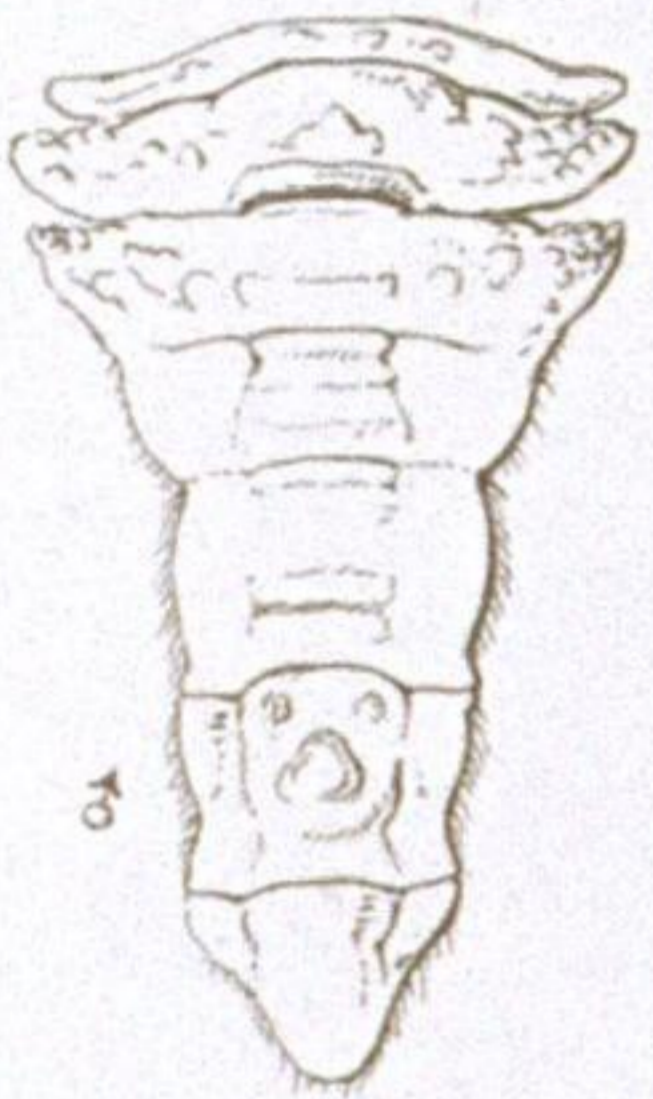
CALAPPA PARTHENOPE.

1. CAL. (Lophos) *Lophos* Herbst. 2. PARTH. (Cryptopodia) *fornicata* Fabr.

1.



1.



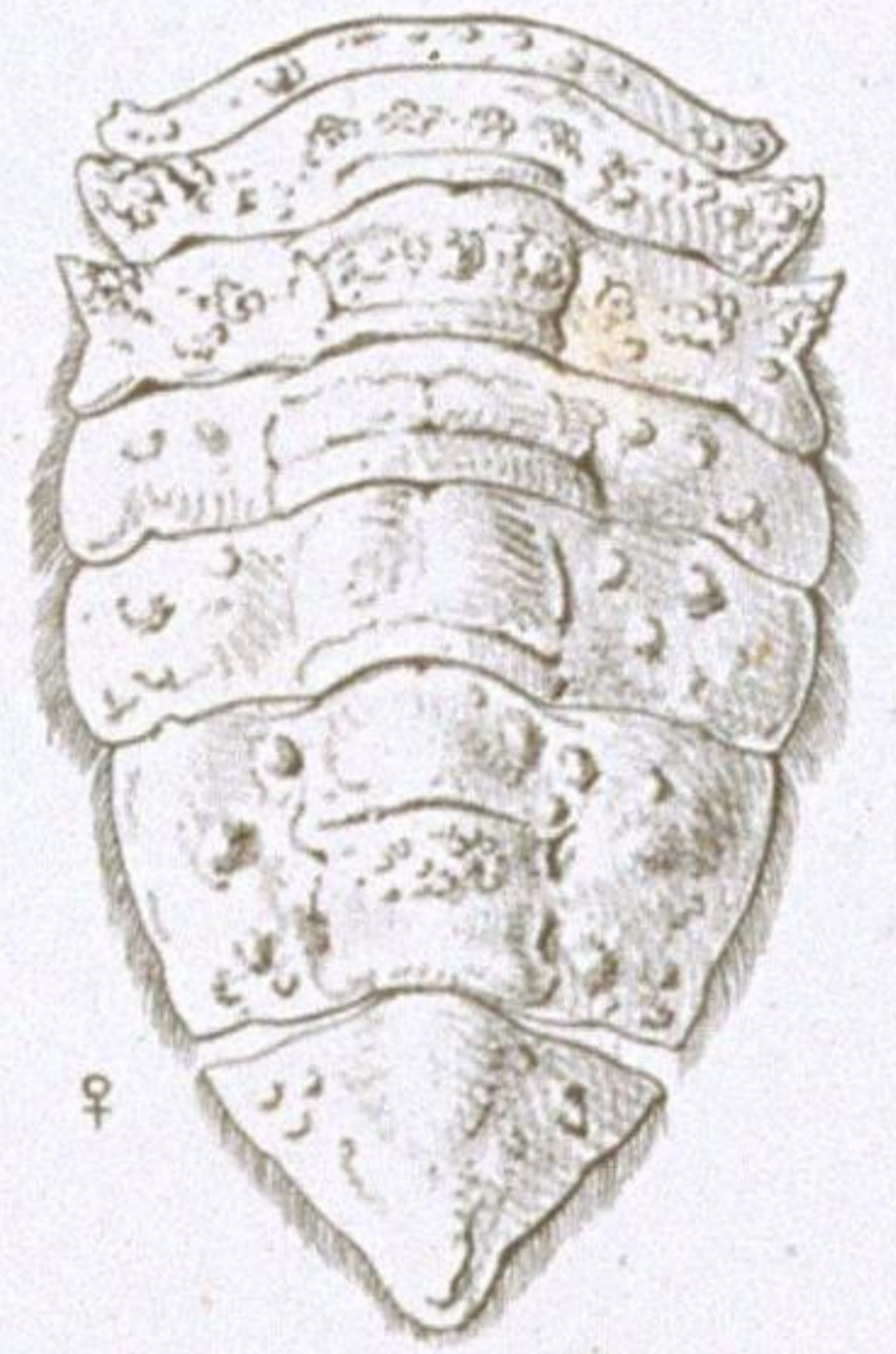
2. a.



2. b.



1.



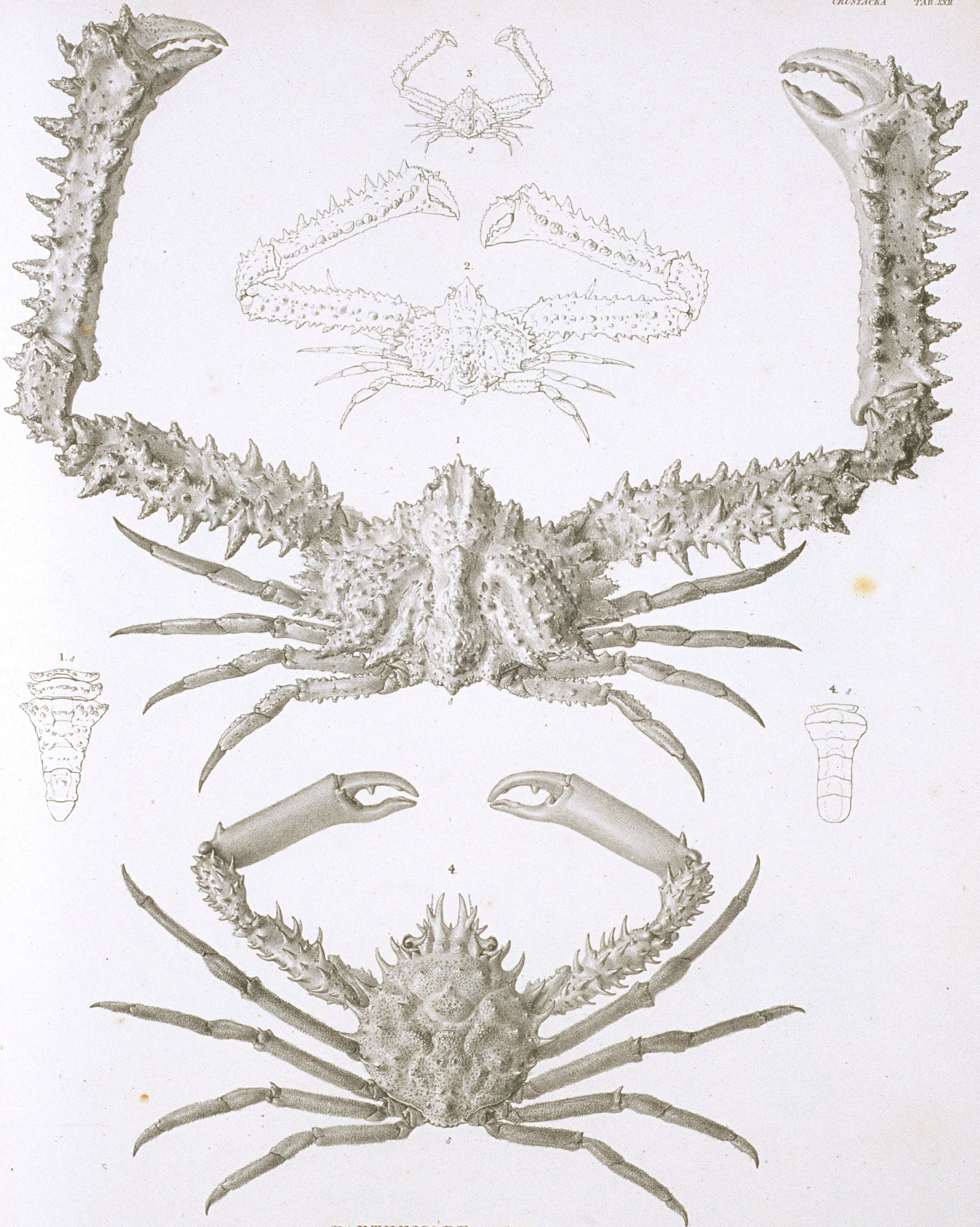
2.



PARTHENOPE. MAJA.

1. PARTH. (*Lambrus*) *valida* n. ♀

2. MAJA (*Paramithrax*) *Peronii* M. Edw.



PARTHENOPE. MAJA.

1. PARTH. (*Lambrus*) *valida* n ♂

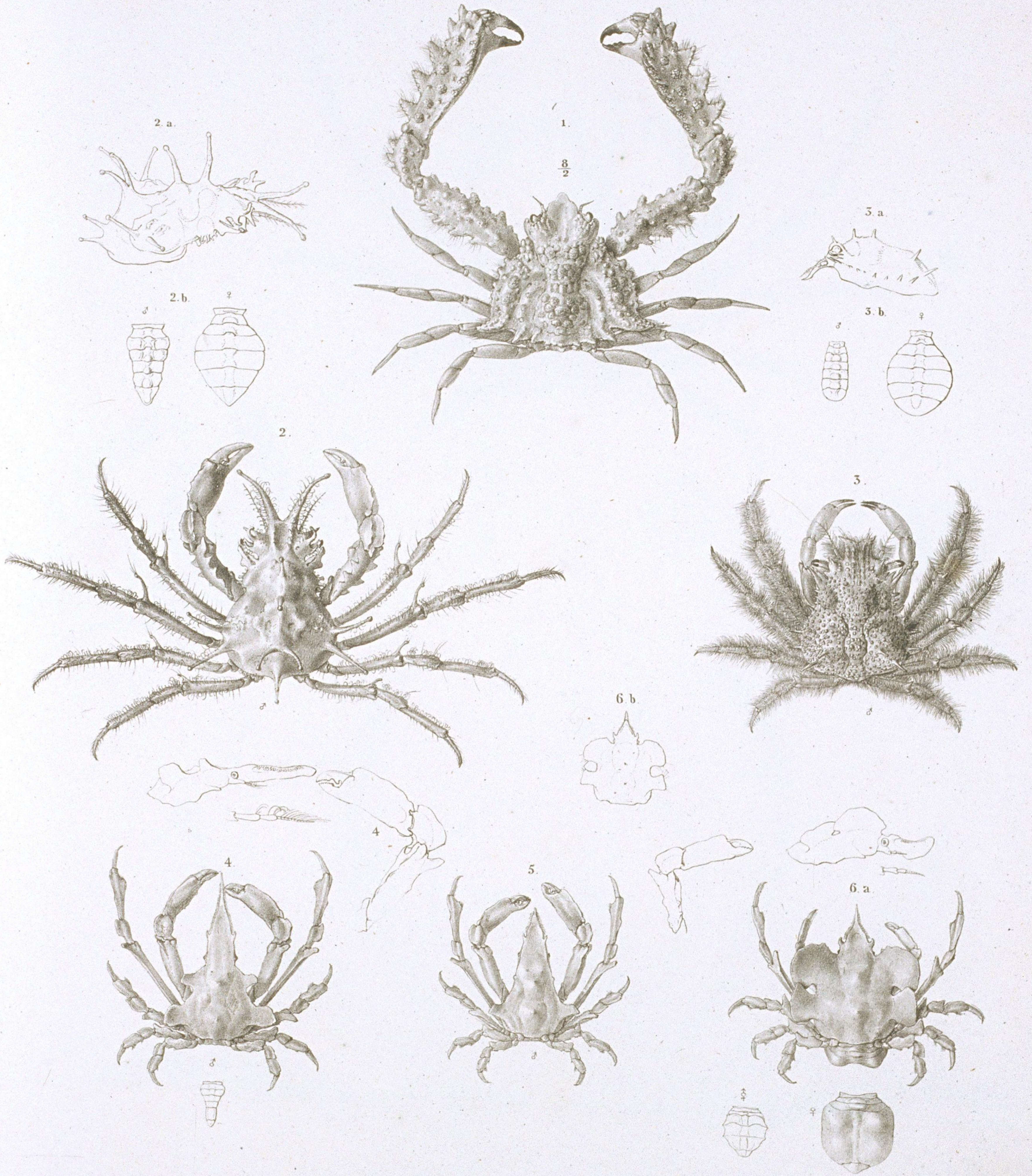
2. id. ♂ junior

3. id. ♂ pullus

4. MAJA (*Mithrax*) *dichotoma* Latr.

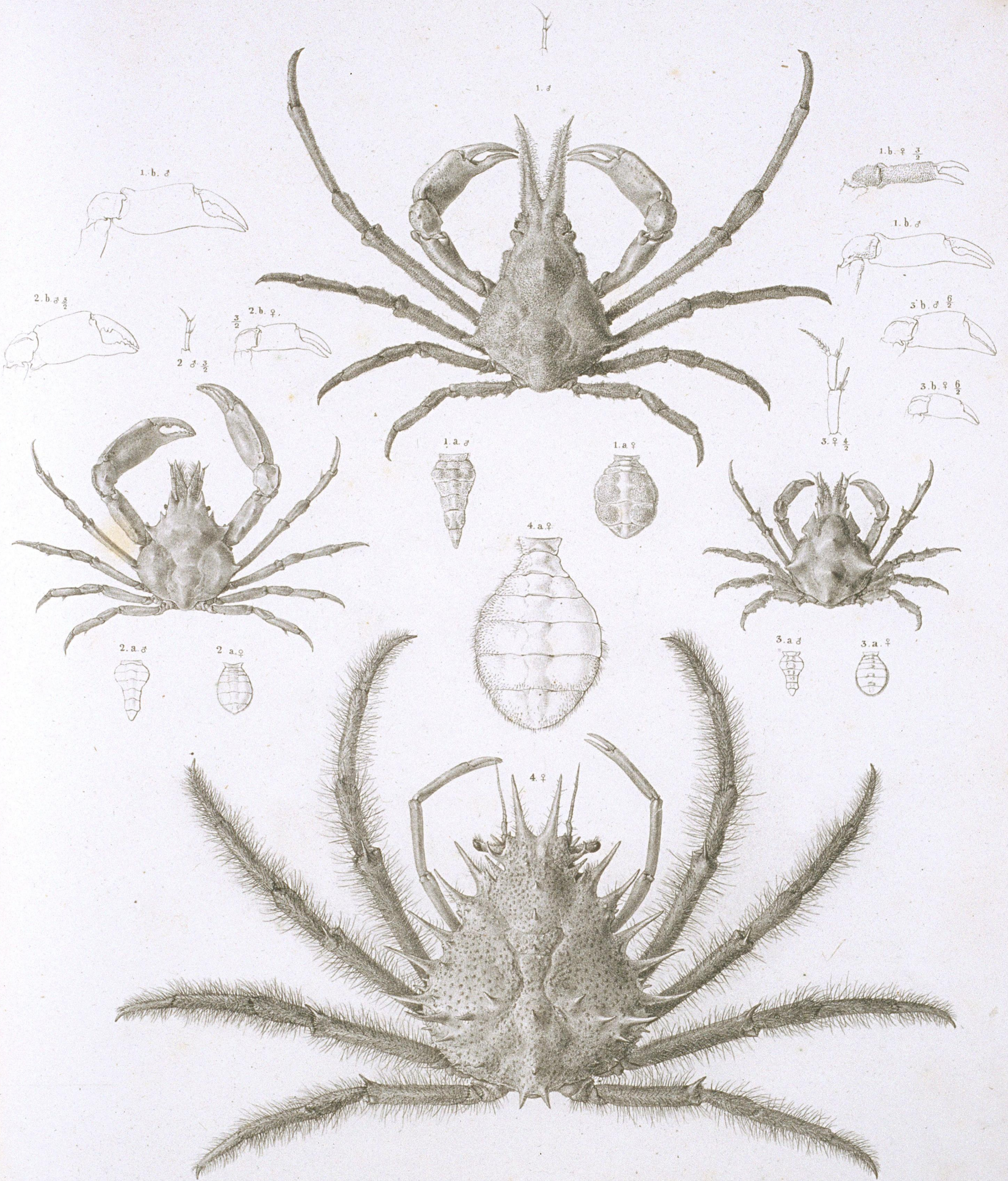
Ac. S. Mulder del.

Lith. d. Nijpon.



PARTHENOPE. MAJA. PISA.

1. PARTH. (*Lambrus*) *diacantha* n. 2. MAJA (*Chorinus*) *aculeata* M. Edw. 3. PISA (*Paramecippe*) *Thalia* Herbst
 4. MAJA (*Huenia*) *elongata* n. 5. *id.* *variet.* 6. MAJA (*Huenia*) *heraldica* n.



PISA.

1. PISA (*Naxia*) *diacantha* n. 2. PISA (*Halimus*) *quadridens* n. 3. PISA (*Halimus*) *incisa* n. 4. PISA (*Paramaja*) *spinigera* n.



INACHUS

INACHUS (Macrocheira) *Kempferi*, n. sp. magnit. *David*

a. Chela maris adulti.

Dr. A. S. Mulder del.

Lith. d. Meyner.

