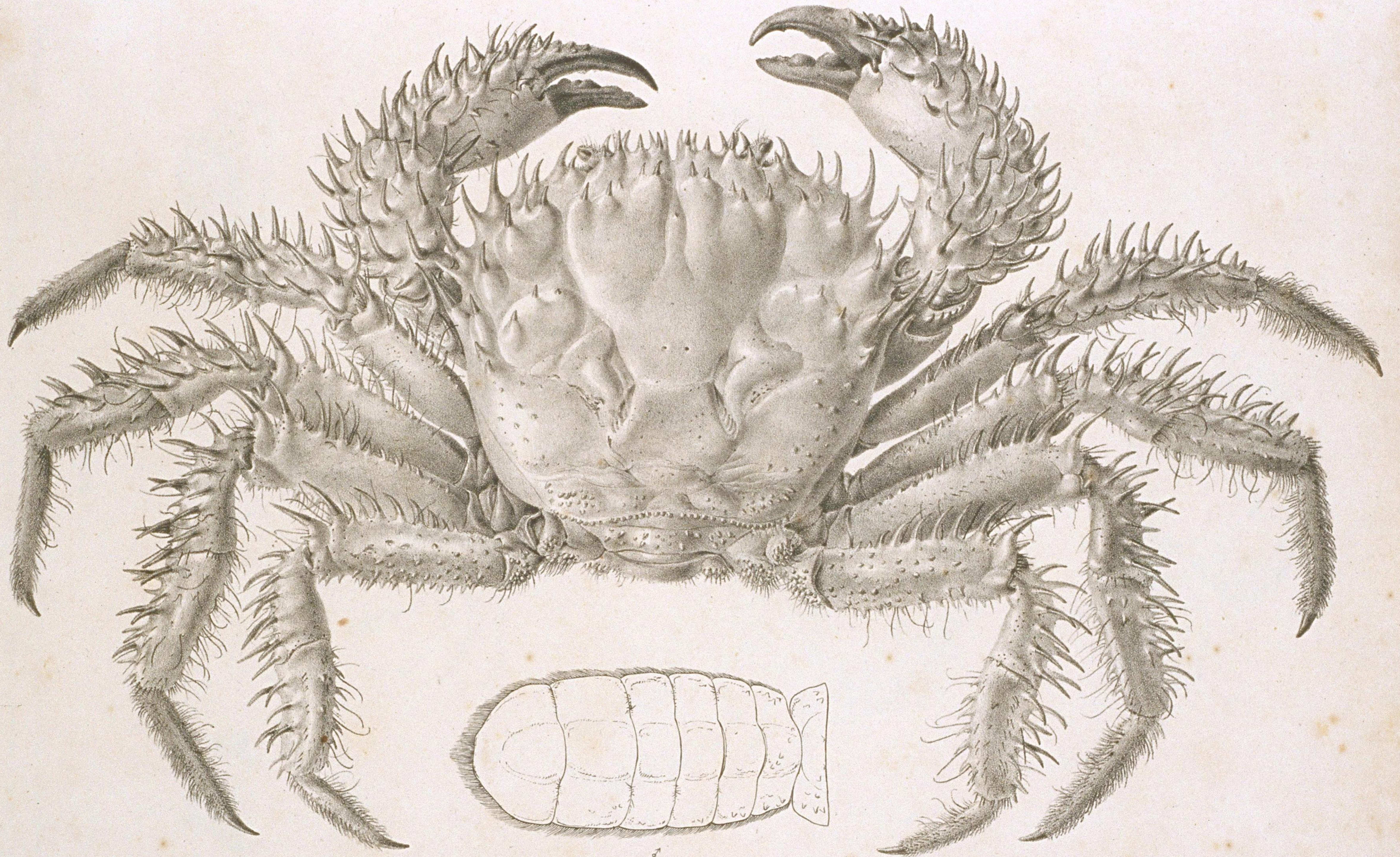


CANCER. Fabr.

- 1. CANC. (Atergatis) subdentatus n. sp. — 2. CANC. (Pilumnus) minutus n. sp. —
- 3. CANC. (Xantho) setifer. n. sp. — 4. CANC. (Atergatis) reticulatus n. sp.

Dr. de S. Mulder pinxit: in laq. del.

Lith. d. Nippon.



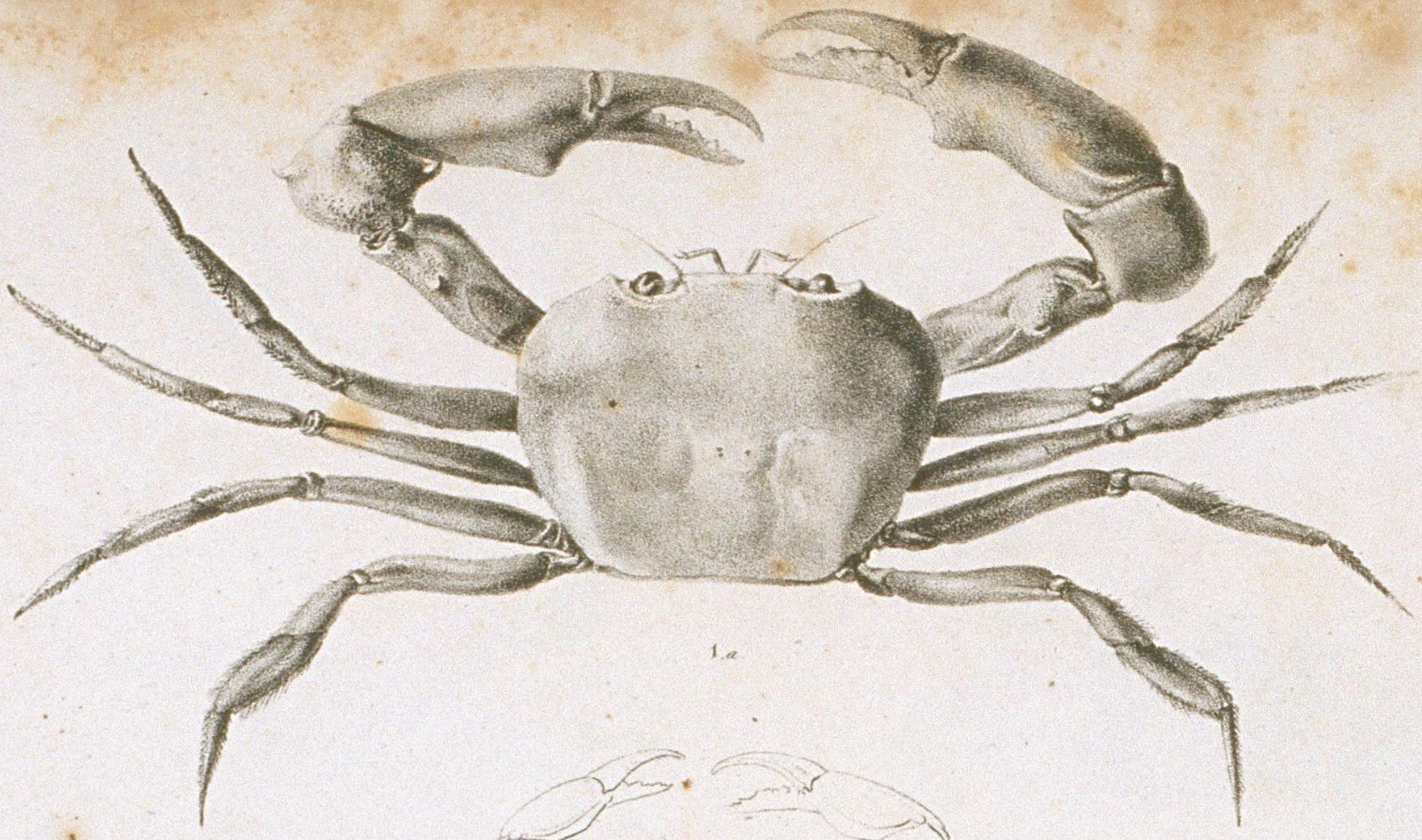
CANCER. Fabr.

CANC(Acanthodes) armatus. n. sp.

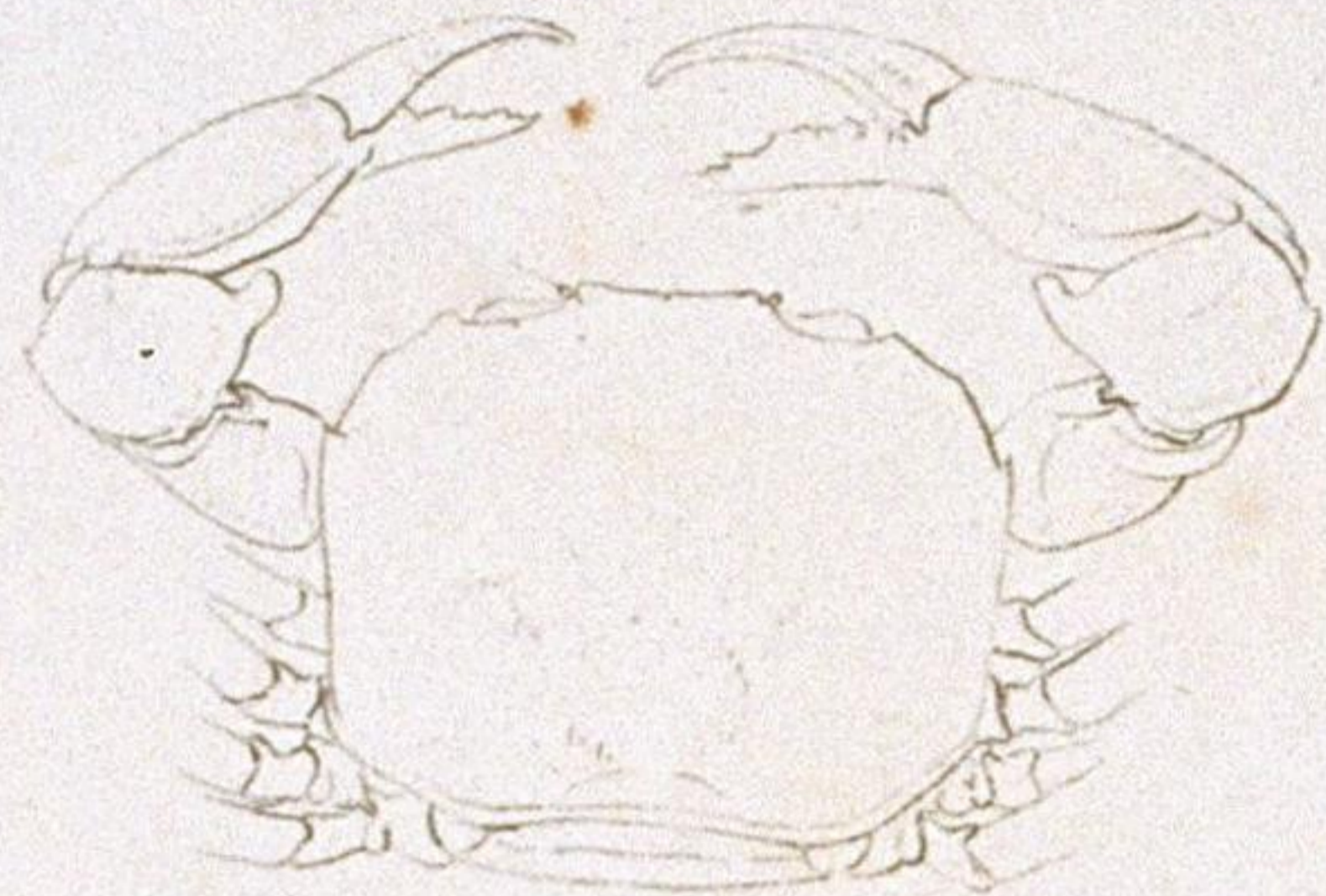


CANCER. Fabr.

1. CANC(Liagore) rubromaculatus. n. sp. - 2. CANC.(Galene) bispinosus. Herbst. 2.a. manus dextra maris. 2.b. abd. maris. 2.c et d. manus dextra et sinistra feminae. - 3. CANC.(Curtonotus) vestitus n. sp. 3.a. abd. maris. - 4.a et b. CANC.(Arges) parallelus n. sp.



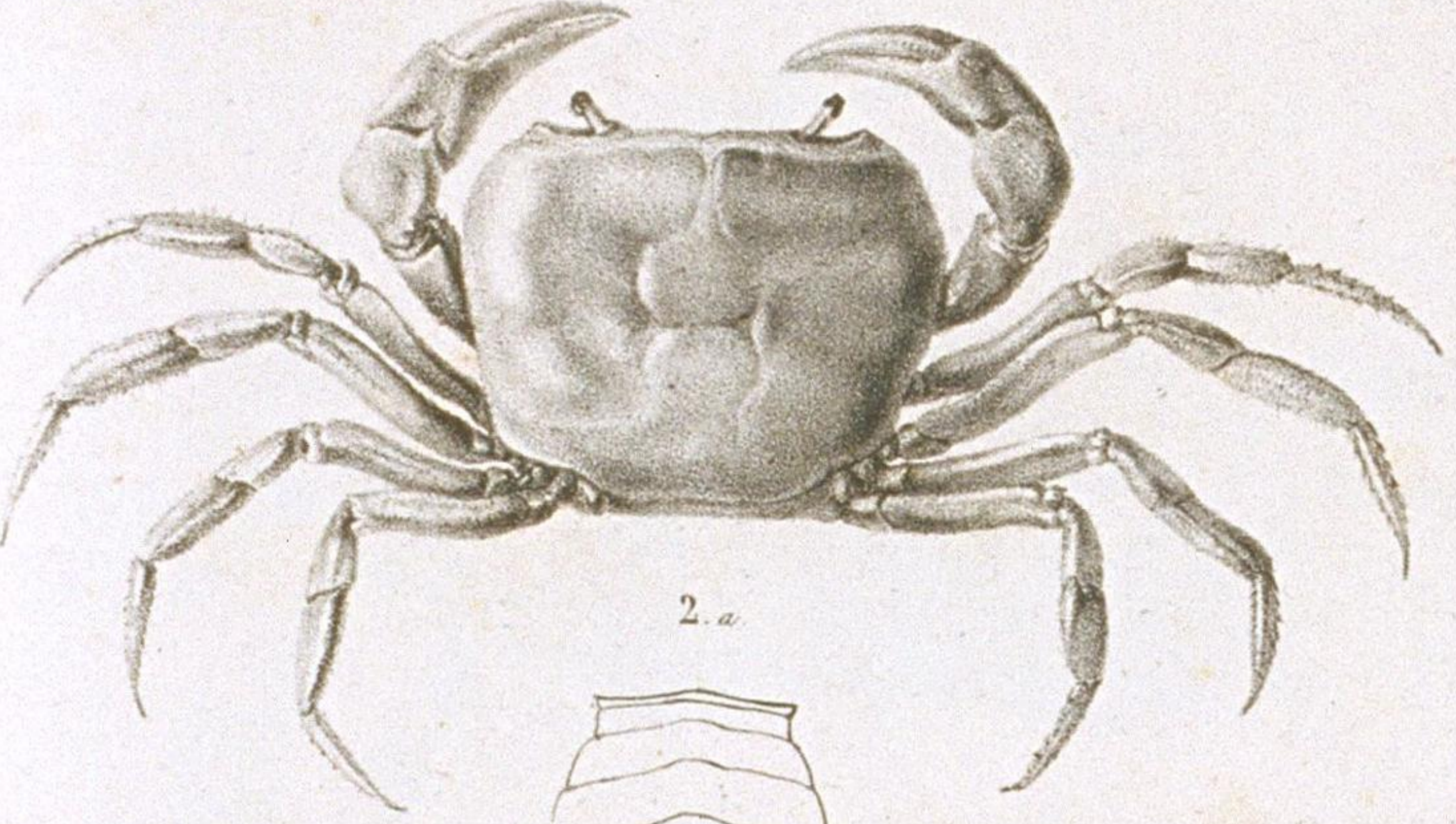
1.a



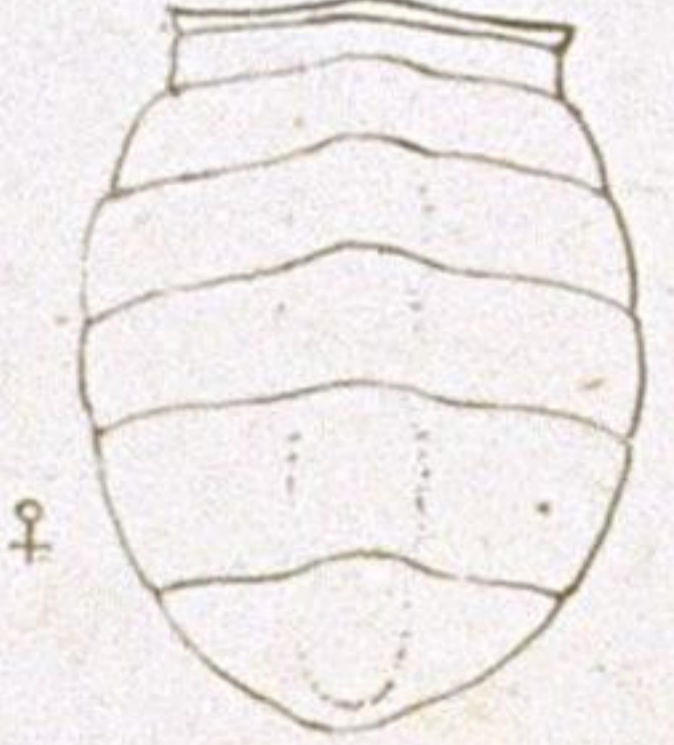
1.c



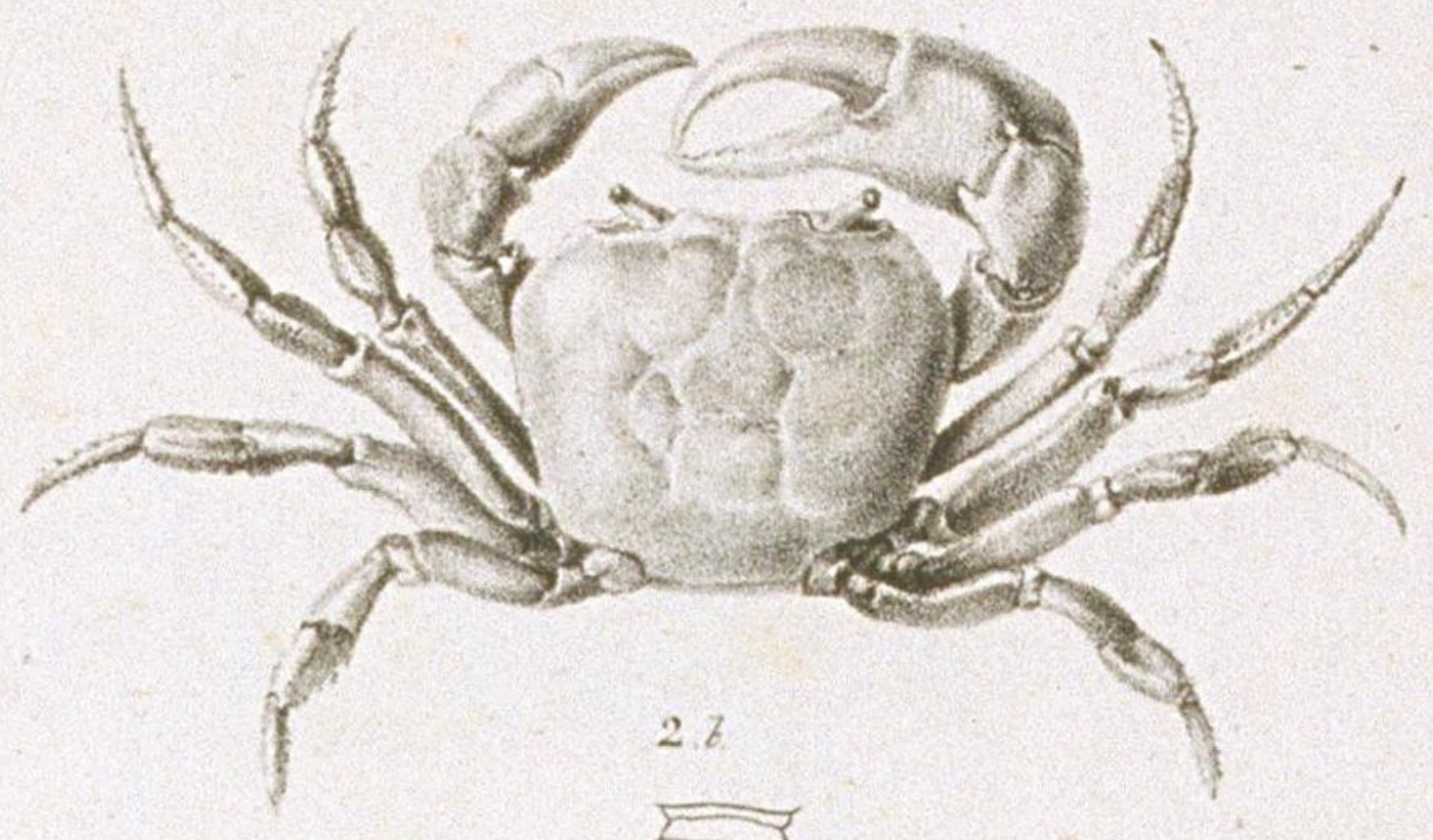
♂



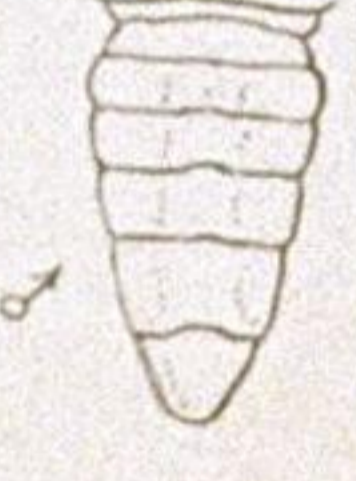
2.a



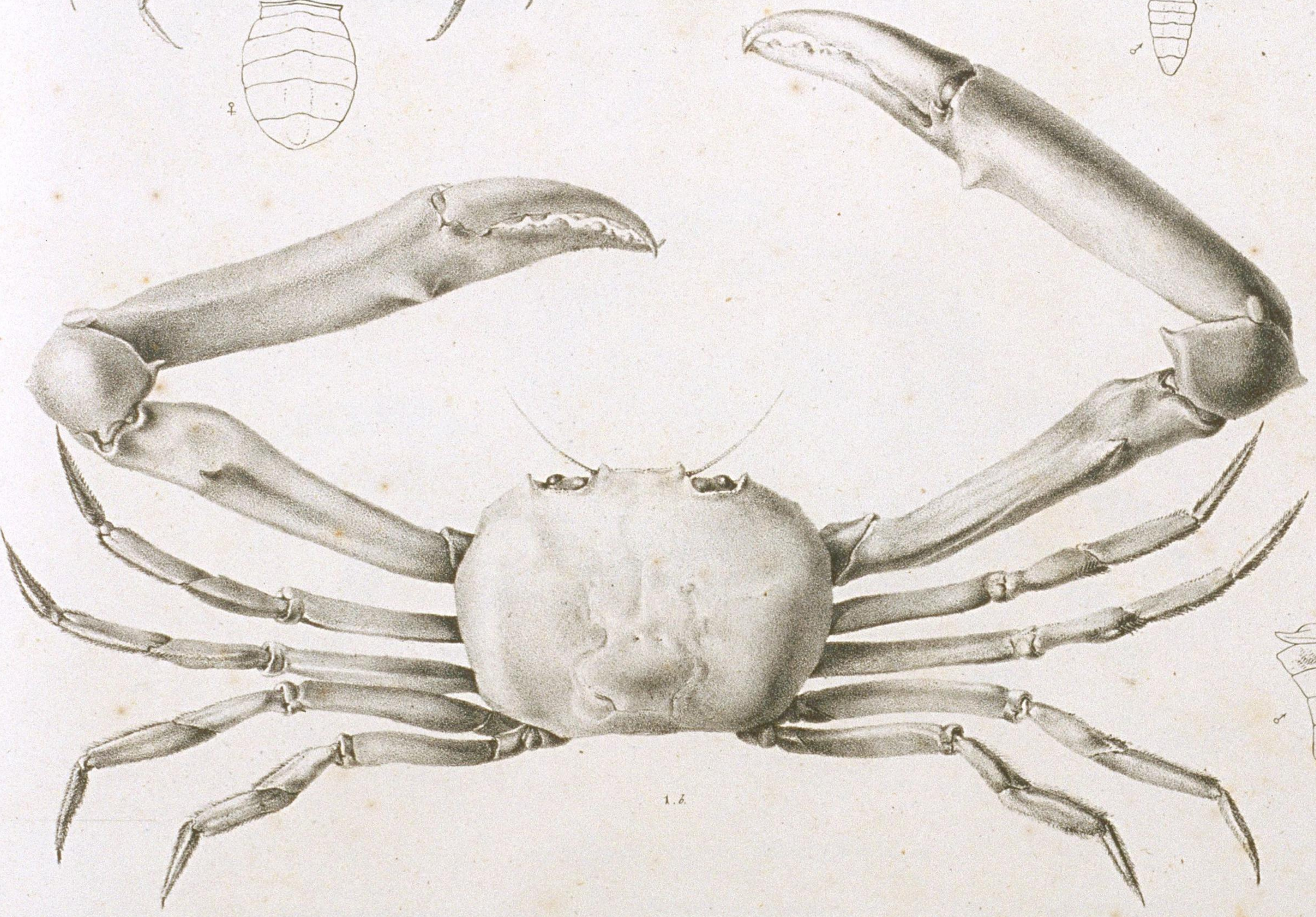
♀



2.b



♂



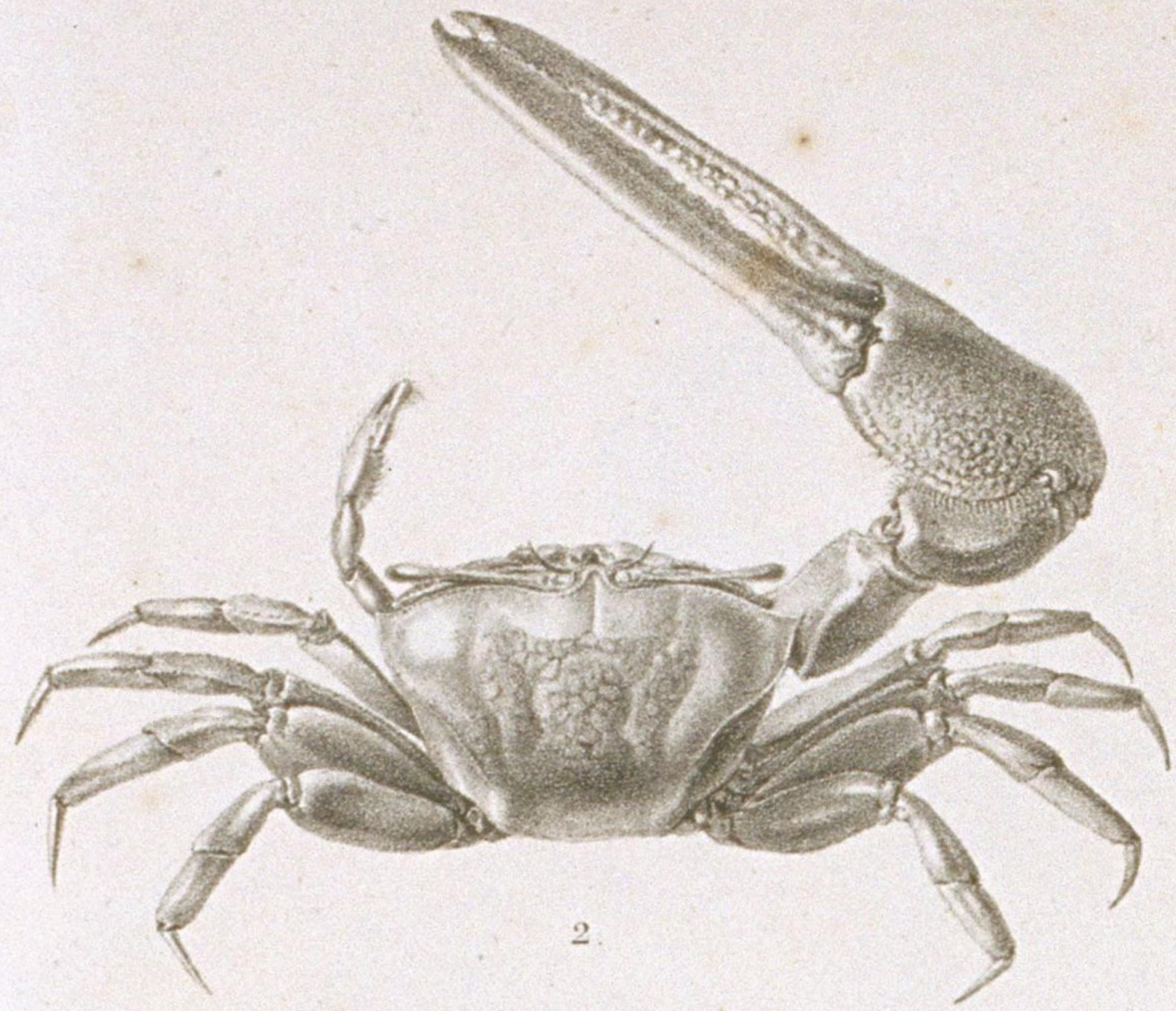
1.b



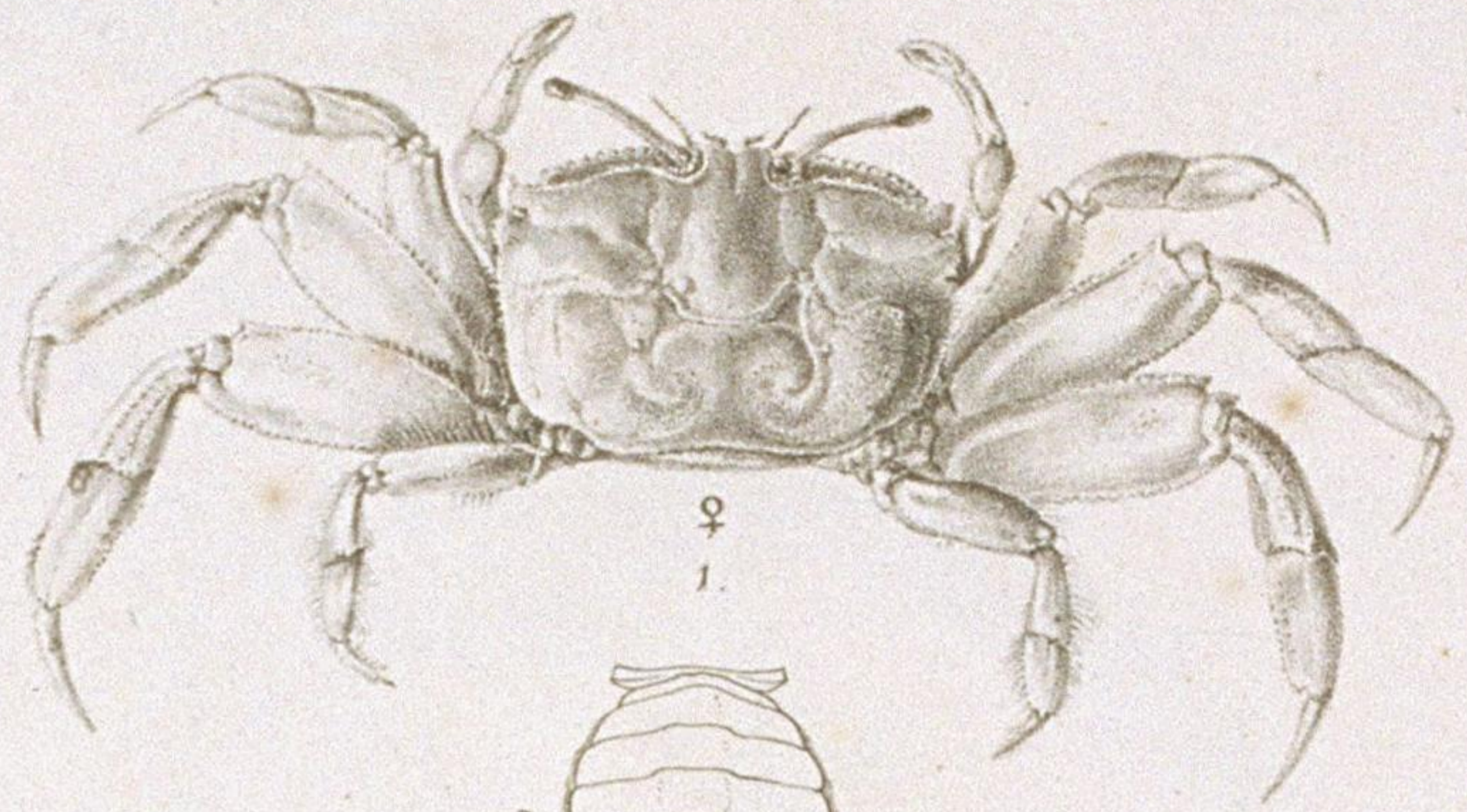
♂

CANCER Fabr

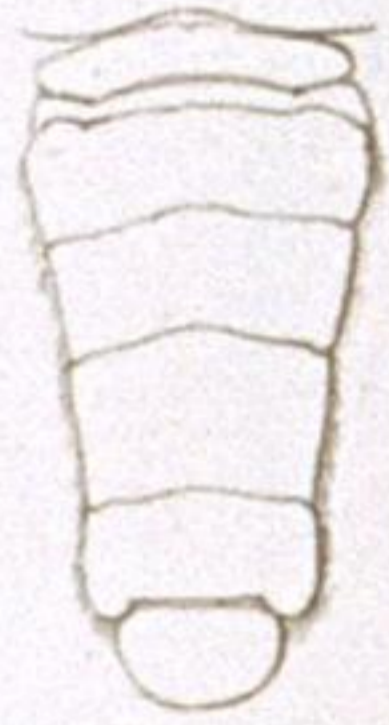
1. CANC. (*Curtonotus*) *longimanus* n. sp. a. mas. jun. b. mas. adult. c. fem. jun. 2. CANC. (*Thelphusa*) *Berardii* Savig. a. fem. b. mas.



2.



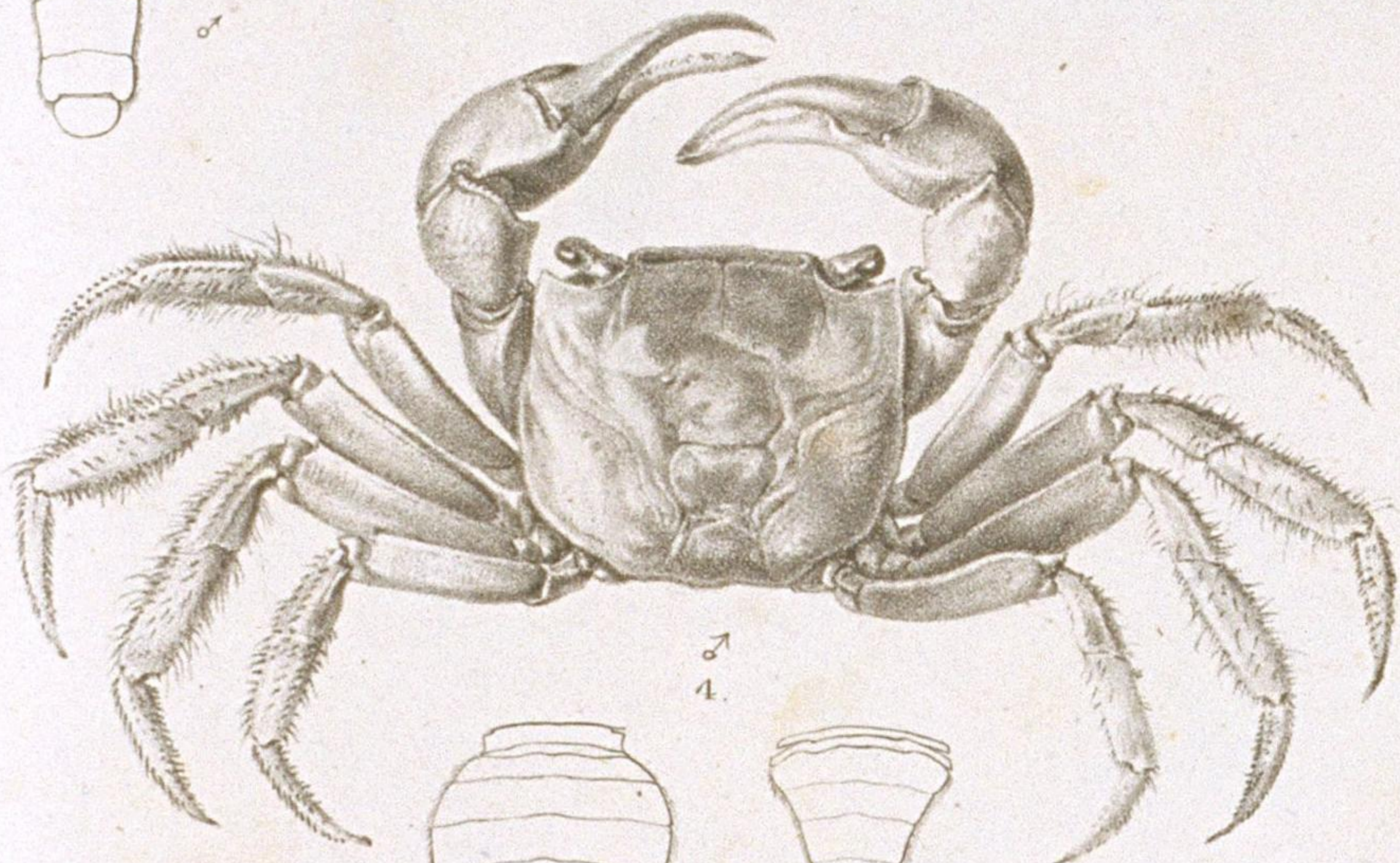
♀
1.



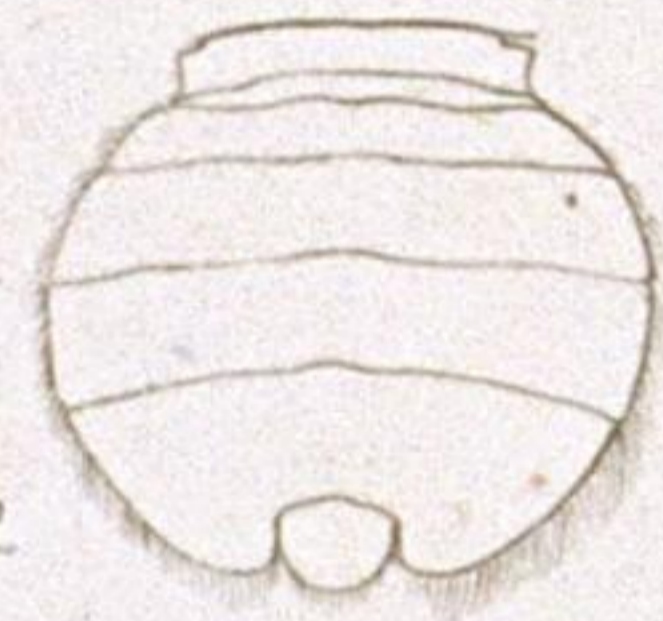
♂



♂



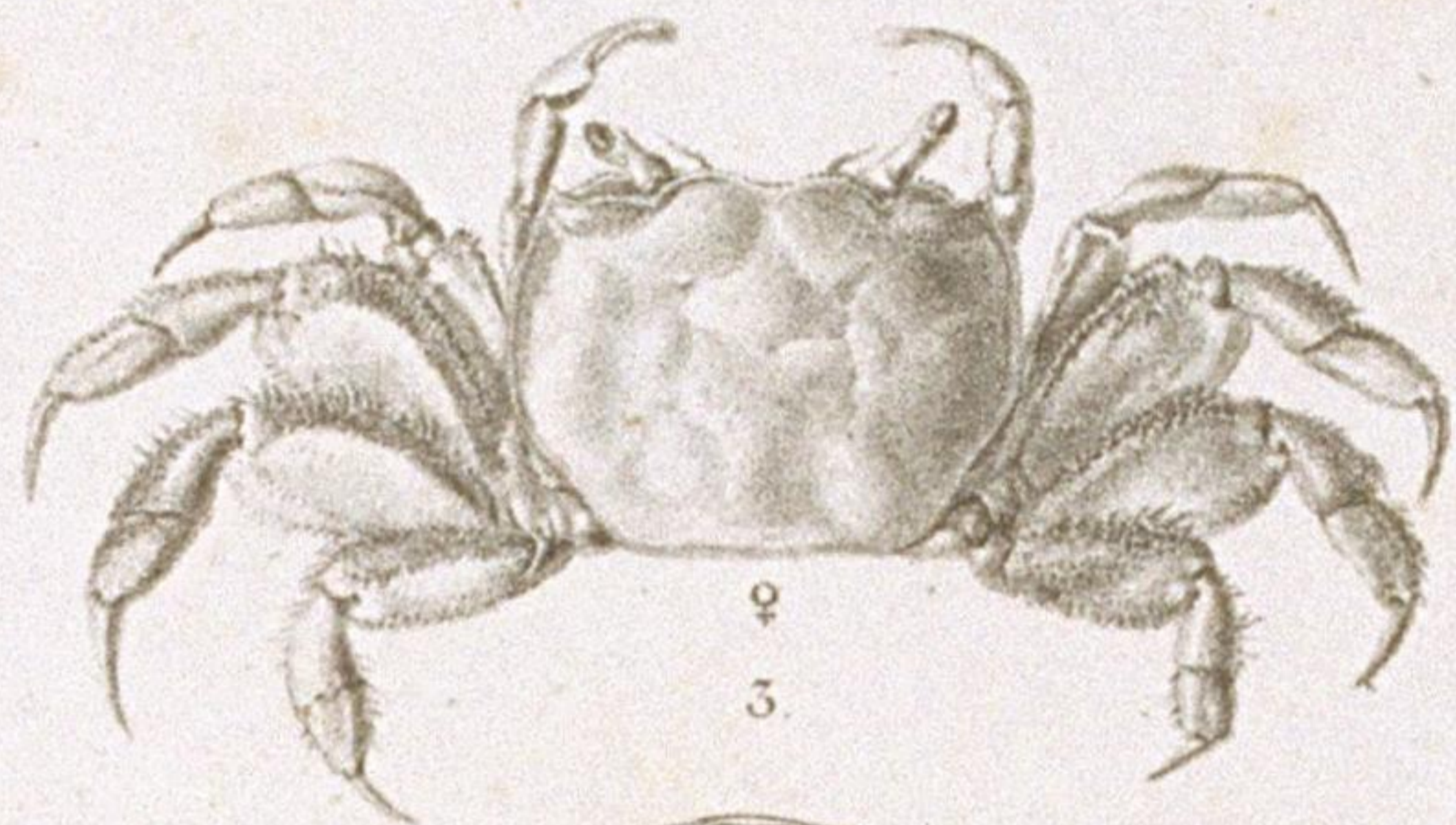
♂
4.



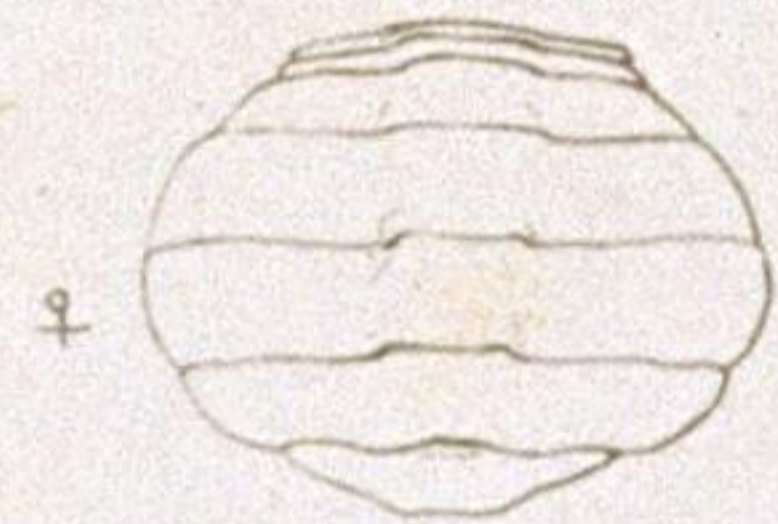
♀



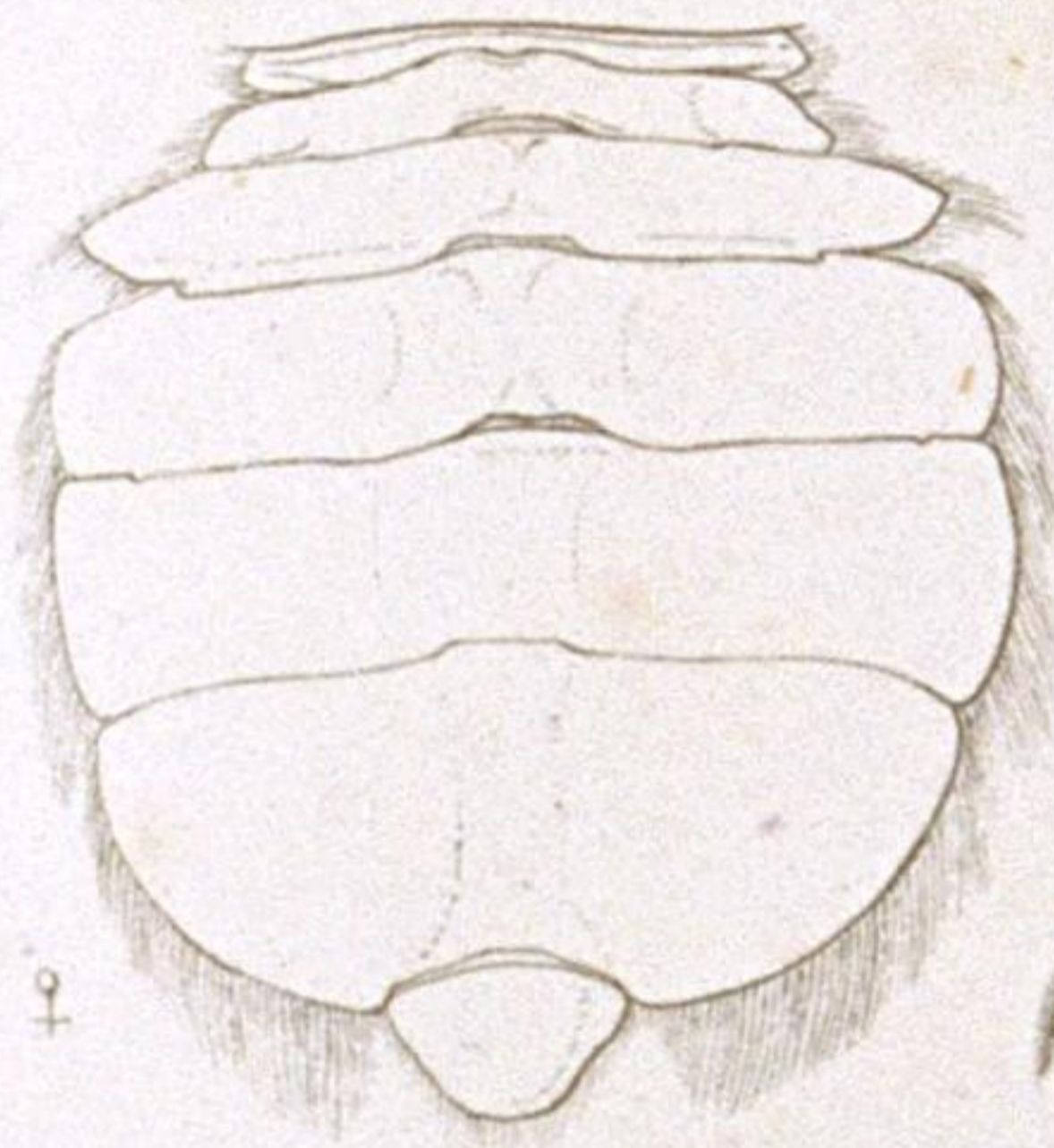
♂



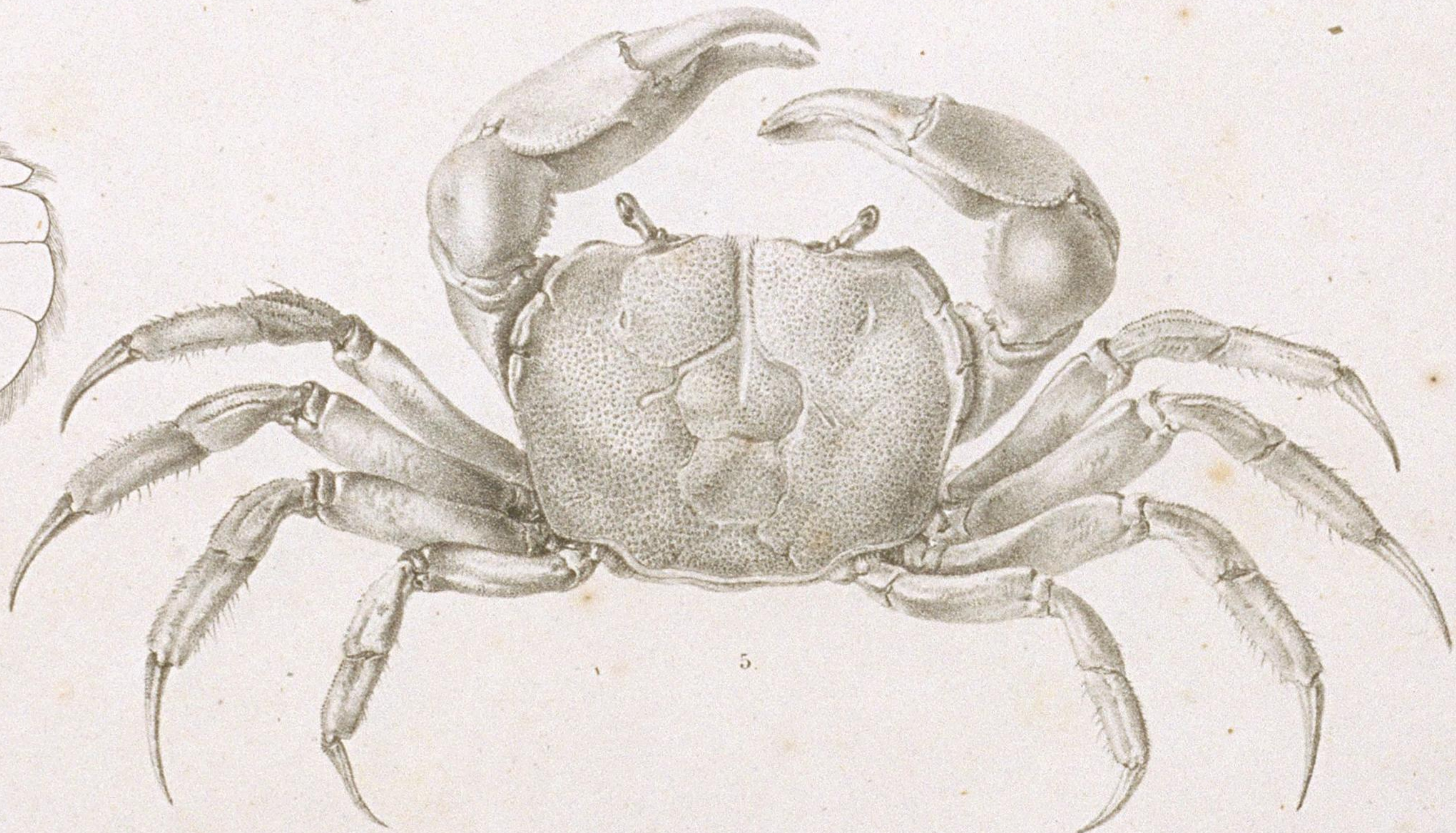
♀
3.



♀



♀



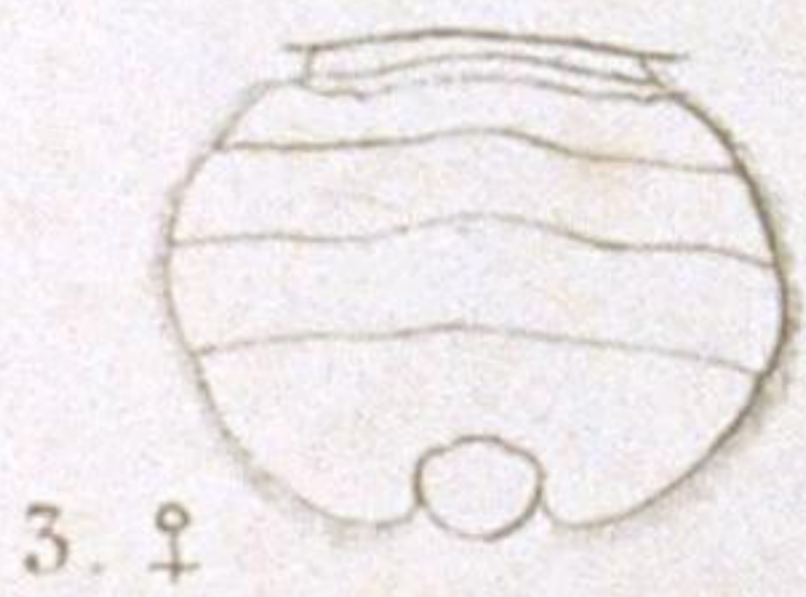
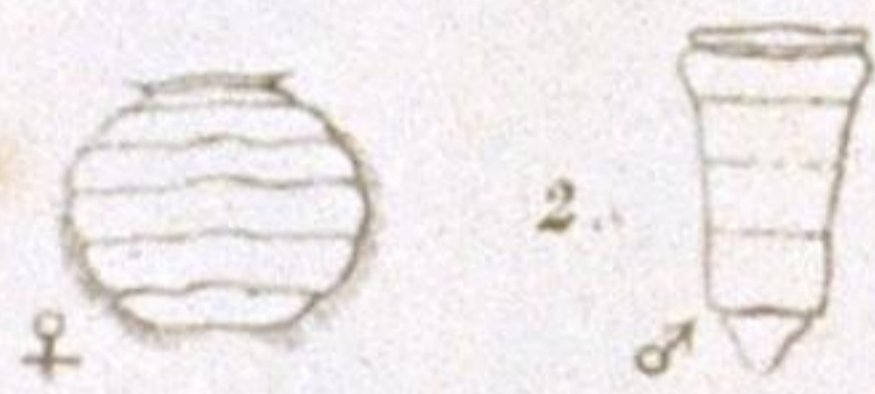
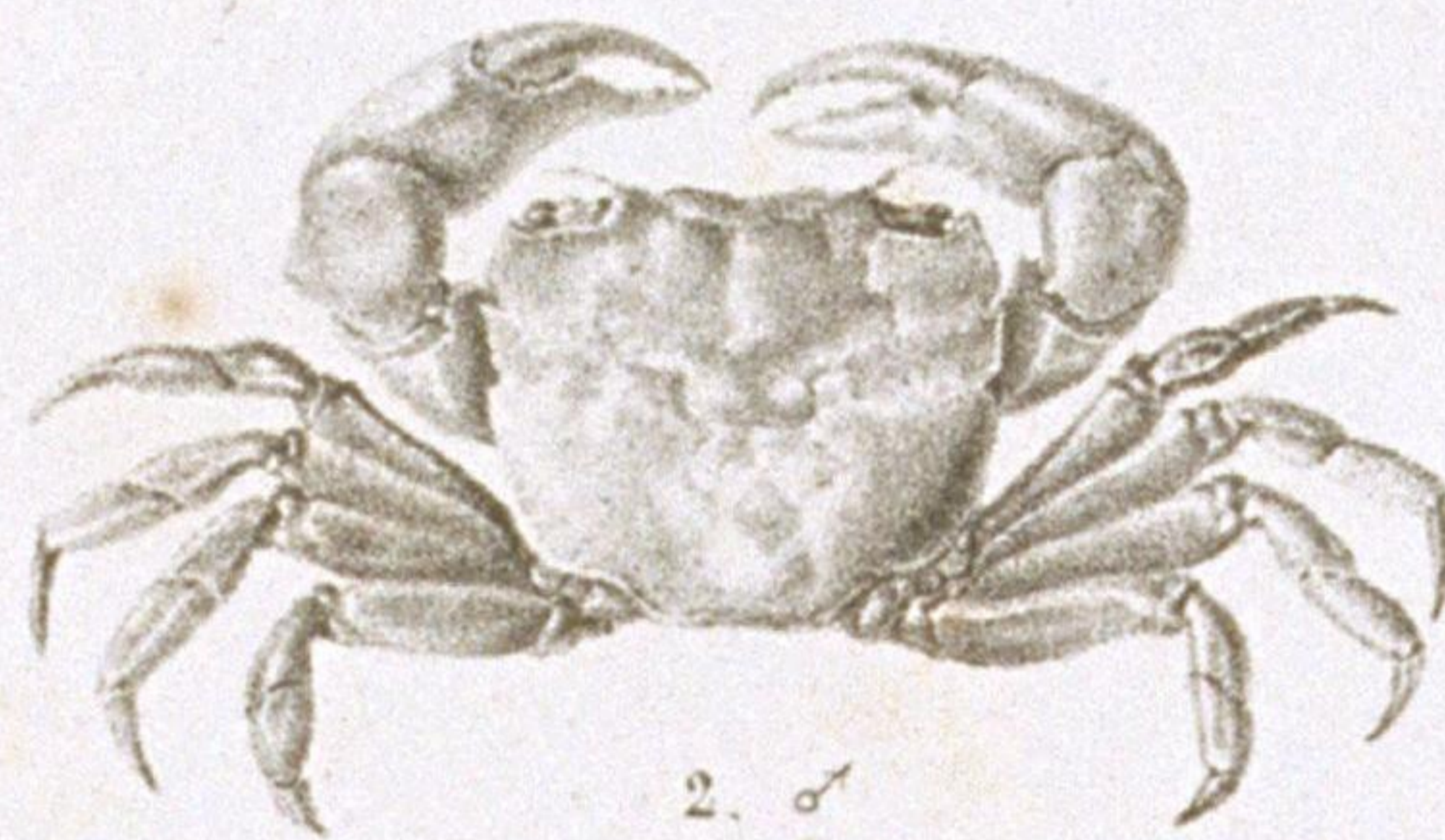
5.



♂

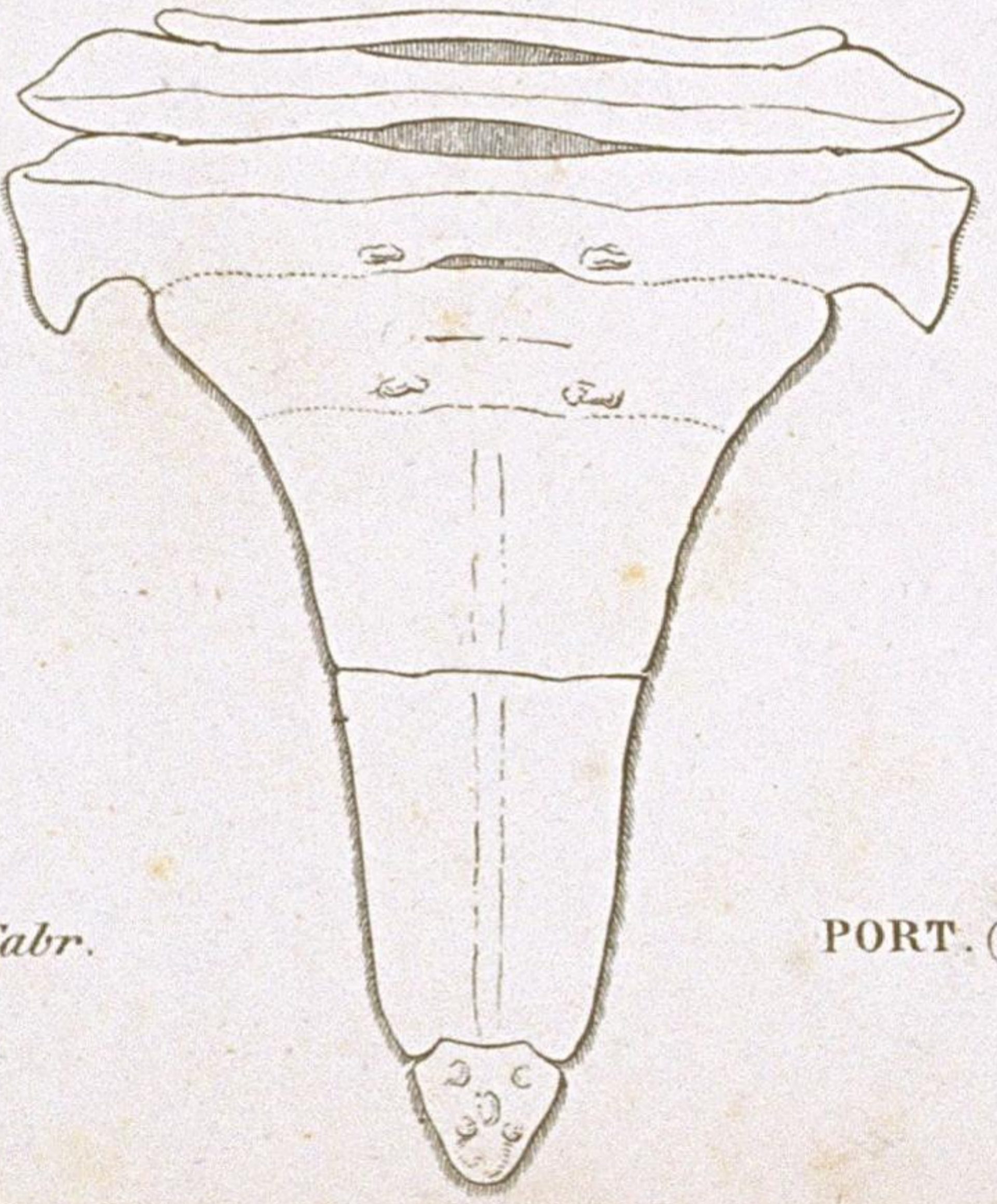
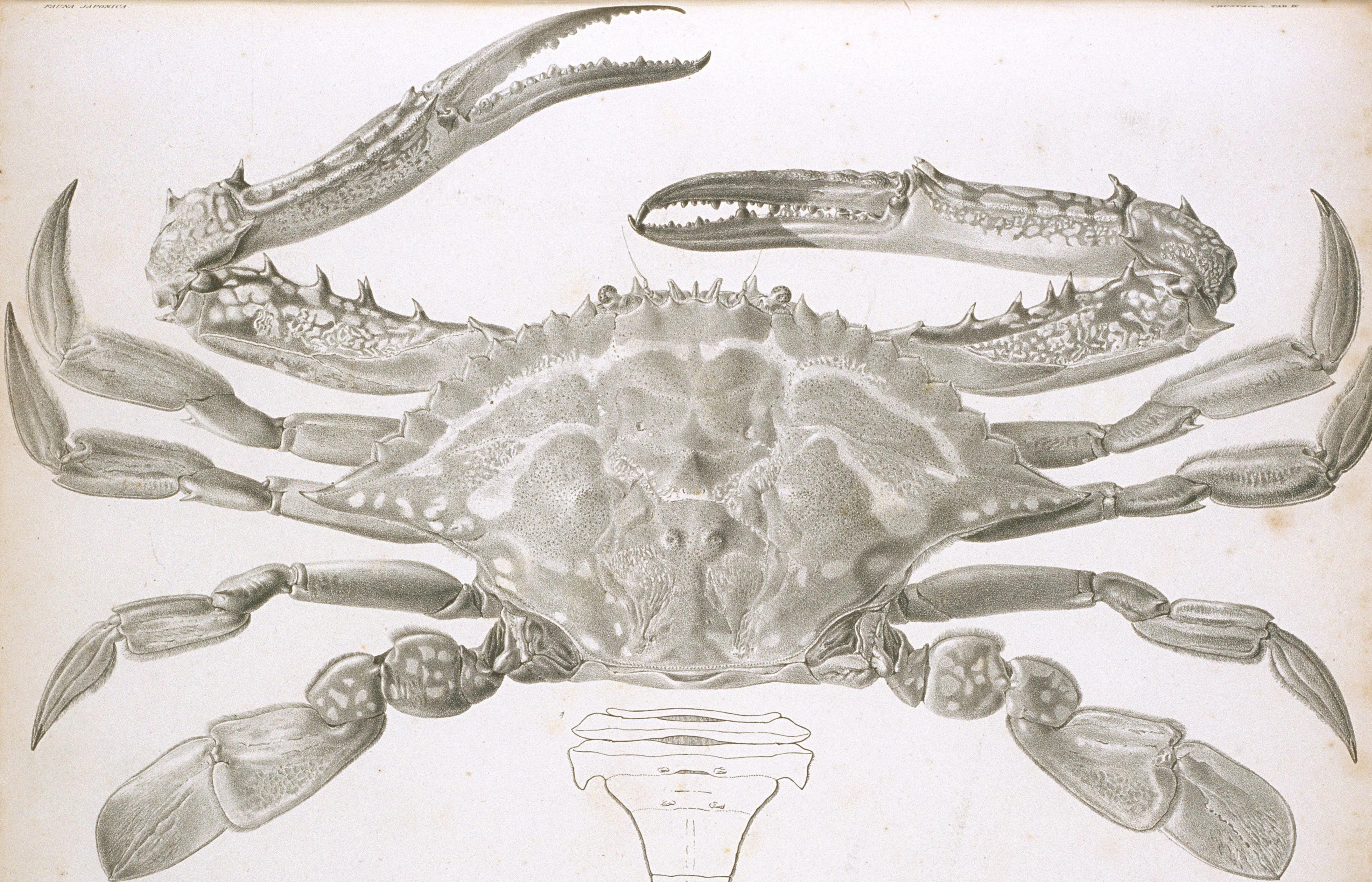
OCYPODE. Fabr. et GRAPSUS. Lam.

- 1 OC. (Macrophthalmus) depressa Rupp. 2 OC. (Gelasimus) arcuata n. sp. 3 OC. (Cleistotoma) dilatata n. sp.
GRAPS (Pachysoma) haematocheir n. sp. 5 OC. (Chasmagnathus) convexa n. sp.



GRAPSUS Lam.

1. GRAPS. (Plagusia) dentipes n. sp. - 2. GRAPS. (Platynotus) depressus n. sp. - 3. GRAPS. (Pachysoma) quadratus, Fabr.



PORTUNUS . Fabr.

PORT. (Neptunus) pelagicus Linn.

Dr. A. S. Muller pinxit et in lap. del.

Lith. J. Nippon.