

Fig. 3. *Austinograea yunohana* sp. nov., ♀ from Kaikata Seamount (paratype, NSMT-Cr 13658; 31.5×20.5 mm) in dorsal view.

larger (left) chela meet at distal one fourth, leave a narrow gape through their proximal three fourths, while in smaller (right) chela, fingers meet throughout their lengths; in larger chela, movable finger with two small, blunt teeth at its proximal part, immovable finger with a small conical tooth; in smaller chela, both fingers minutely dentate.

Ambulatory legs long, stout, depressed, being fringed with sparse longish setae and thick felt along posterior margins of meri and both margins of carpi, propodi and dactyli.

Abdomen with seven distinct segments, rather wide, not rapidly tapering; sixth segment provided with a deep pit at each anterolateral part of inner side, to which a wart-like granule of sixth sternite carrying the first ambulatory legs is just fitted to fasten the abdomen in natural position. First pleopod long, slender, reaching distal end of abdominal fossa, second pleopod filiform, as long as first pleopod.

*Notes on allotype* (Female: Fig. 7A). Biggest of all the specimens examined, with 50.5 mm in cb, 32.5 mm in cl., 0.64 in cl/cb; proportion of the carapace is almost the same with that of holotype male, but the carapace is seemingly wider and narrowed posteriorly because of the more strongly convergent and concave posterolateral margins of both sides; left anterolateral margin of carapace weakly angulated

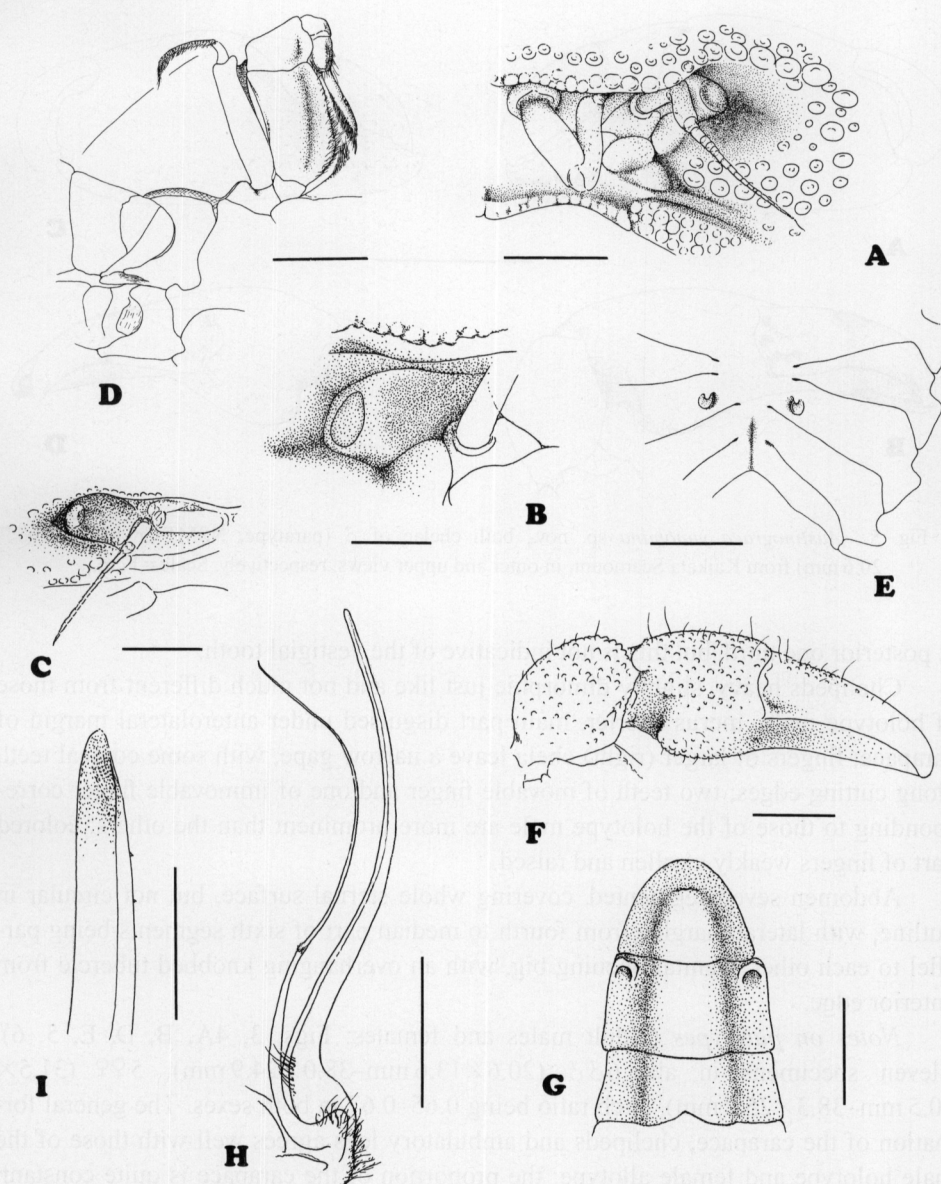


Fig. 4. *Austinograea yunohana* sp. nov., paratypes (A, B, NSMT-Cr 13657; D, E, NSMT-Cr 13658) and juvenile male (NSMT-Cr 13661) (C, F) from Kaikata Seamount, and holotype male from Myojin Knoll (NSMT-Cr 13655) (G-I). Frontorbital region (A-C), third maxilliped and pterygostomian region (D), sternum (E), right chela (F), distal three segments of male abdomen in inner view (G), first and second male pleopods in ventral view (H), and distal part of first male pleopod (I). A, ♂ (cb 27.0 mm); B, ♂ (cb 20.6 mm); C, F, juvenile male (cb 5.4 mm); D, E, ♀ (cb 34.4 mm); G-I, ♂ (cb 41.9 mm). Scales for A=2 mm; B, C, F=1 mm; D, E, G=5 mm; H=4 mm; I=0.5 mm.