

PLANCHE XV

Fig. 1-4. — *Phymodius nitidus* (Dana), carapace :

1. ♂ juv. 3,5 × 5 mm, Tahiti.
2. ♀ 5 × 8 mm, Kaukura, G. SEURAT coll., G. NOBILI det.
« *Pilodius nitidus* ».
3. ♂ 6,5 × 10 mm, Madagascar, Tamatave, H. BALSS det.
« *Phymodius sculptus* A. Milne Edwards ».
4. ♀ ovigère 10,5 × 17 mm, Nouvelle-Calédonie, BALANSA
coll., A. MILNE EDWARDS det. « *Chlorodius sculptus*. »

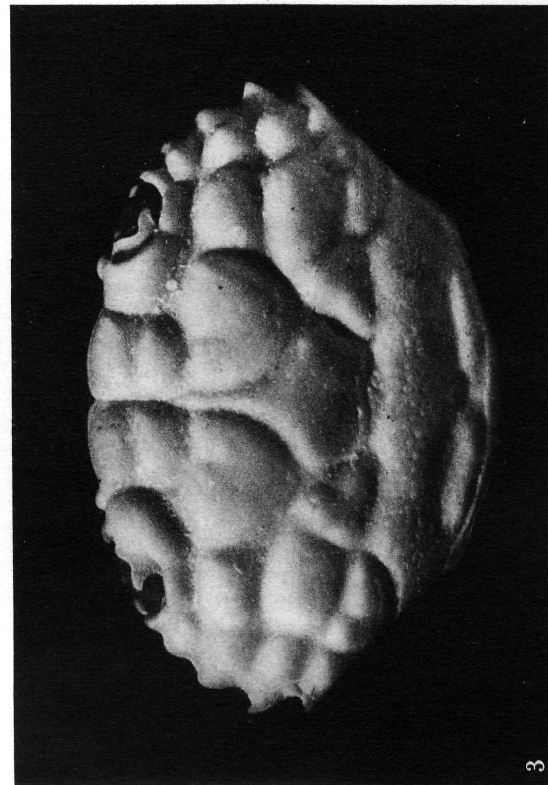
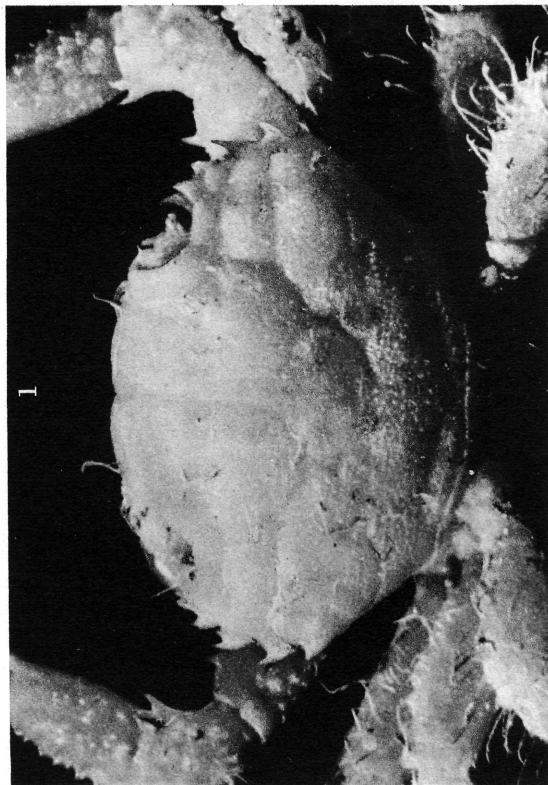
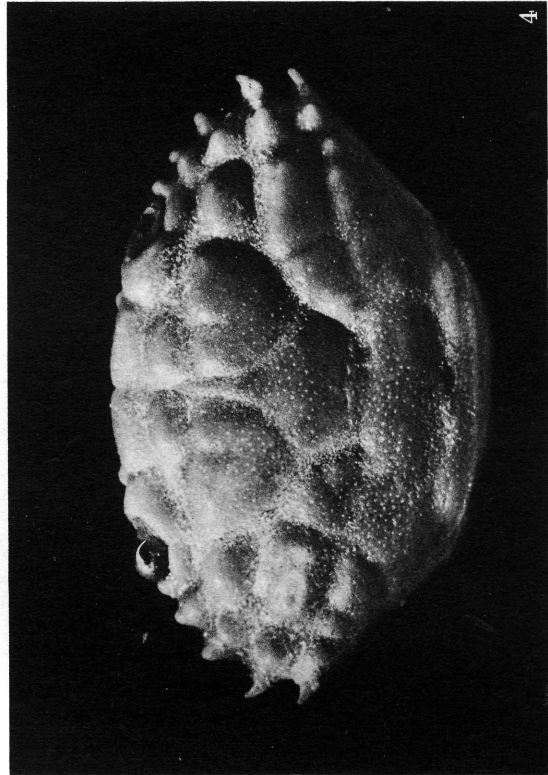
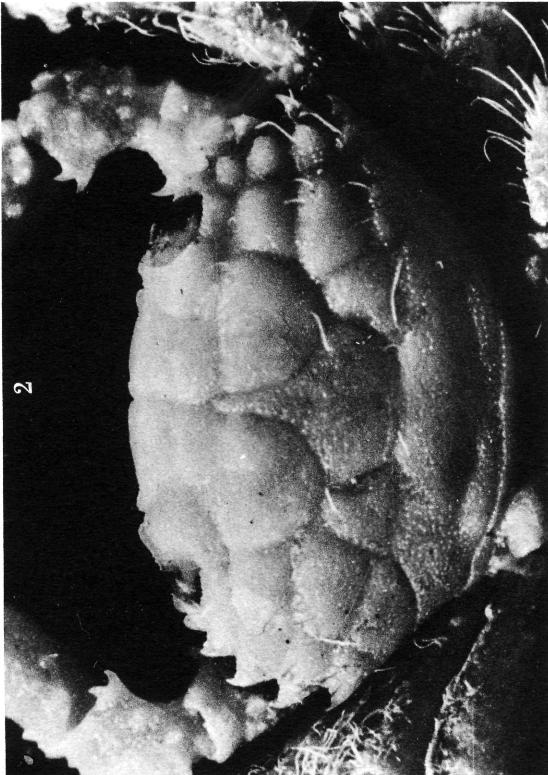


PLANCHE XVI

- Fig. 1-3. — *Phymodius granulatus* Targioni Tozzetti, carapace :
1. ♂ 5 × 7 mm, Mer Rouge, F. JOUSSEAUME coll., G. NOBILI det.
 2. ♂ 6,2 × 8,5 mm, Djibouti, H. COUTIÈRE coll., G. NOBILI det.
« *Phymodius* sp. » (spécimen brossé).
 3. ♂ 9,5 × 14 mm, Djibouti, M. MAINDRON coll., G. NOBILI det.
(spécimen brossé).

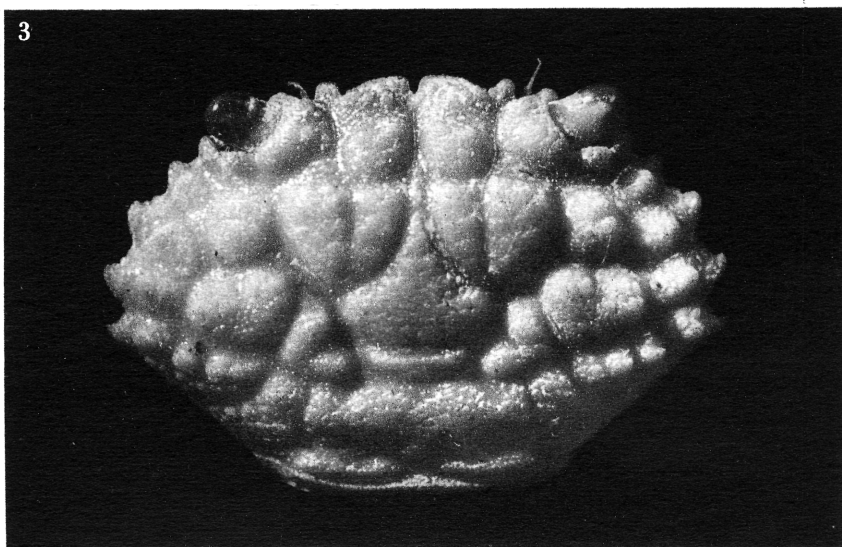
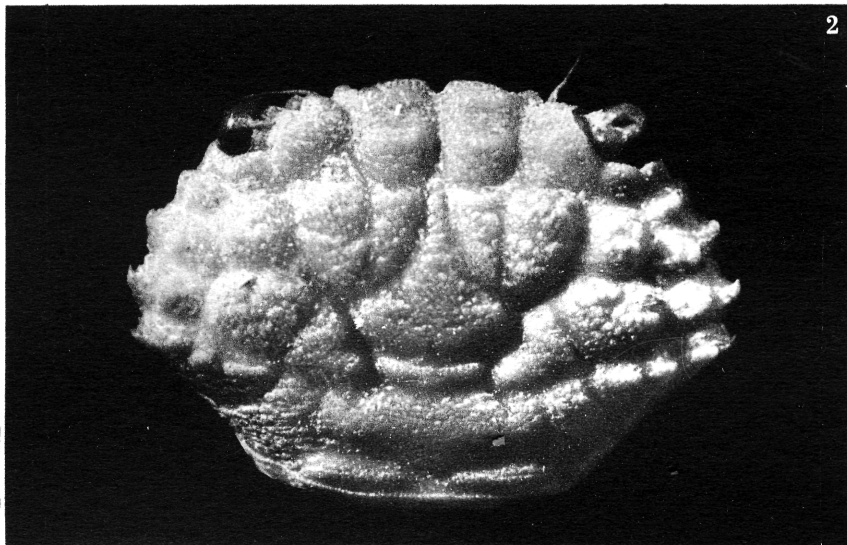
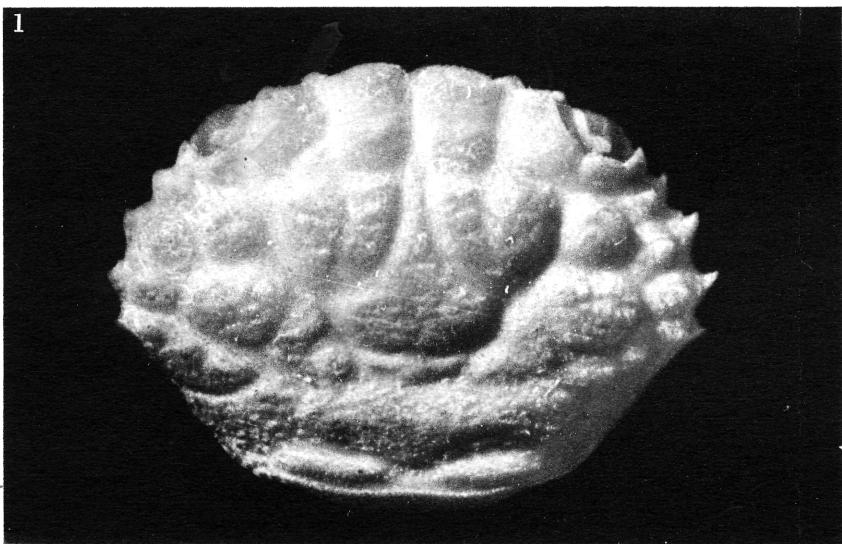


PLANCHE XVII

Fig. 1 — *Pilumnus parvulus* Nobili, ♂ lectotype 4,5 × 6,5 mm, Gatavaké,
G. SEURAT coll.

Fig. 2. — *Pilumnus ransonii* sp. nov., ♂ holotype 7,3 × 9,9 mm, Tahiti.

Fig. 3. — *Pilumnus merodontatus* Nobili, ♂ holotype 8,7 × 11,6 mm, Rikitea.