

PLANCHE XII

- Fig. 1-4. — *Phymodius ungulatus* (H. Milne Edwards), carapace :
1. ♂ 8,2 × 10,5 mm, Madagascar, J. MILLOT coll., H. BALSS det. « *Chlorodopsis scabricula* Dana. »
 2. ♂ 9 × 13 mm, Madagascar, J. MILLOT coll., H. BALSS det.
 3. ♀ 11 × 16 mm, localité inconnue.
 4. ♀ 13 × 19 mm, île Maurice, Le Chaland, P. CARIÉ coll., H. BALSS det.

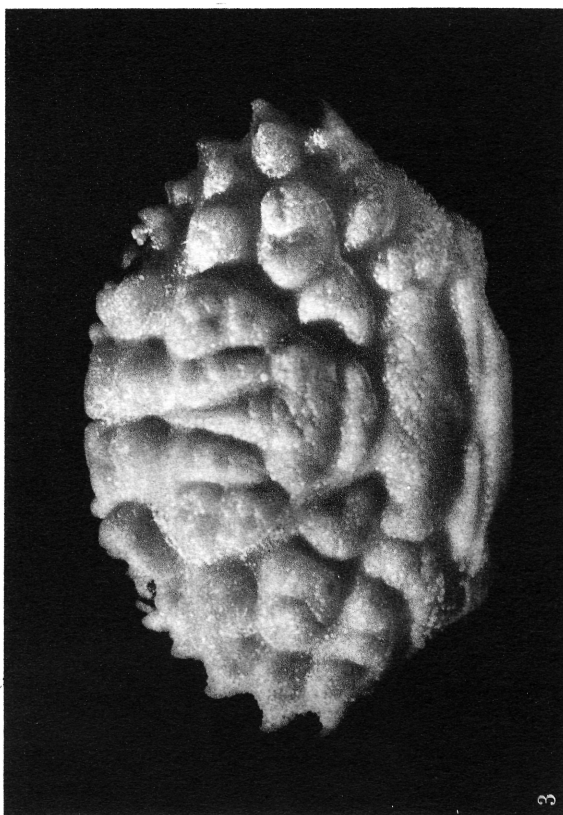
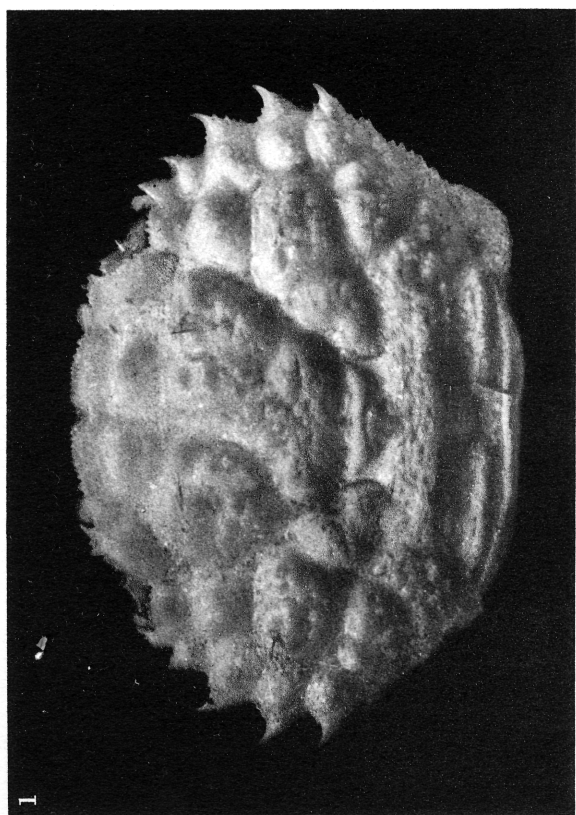
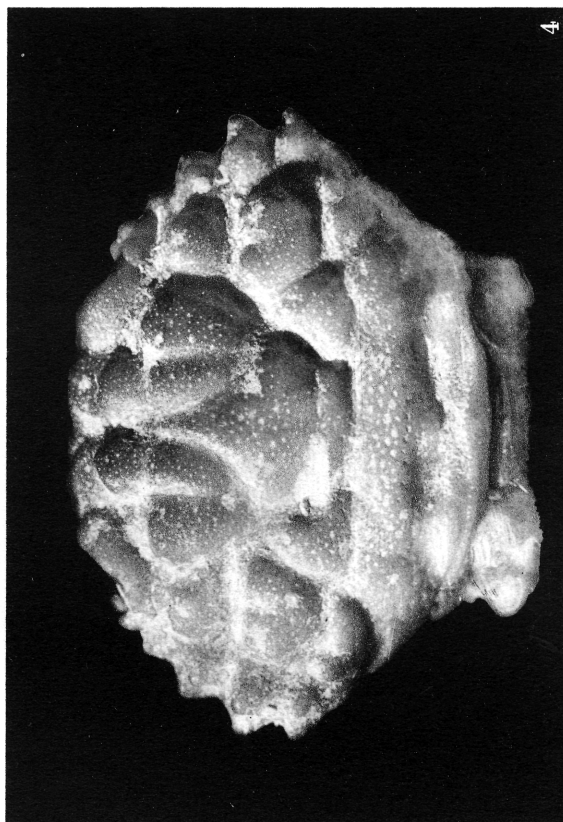
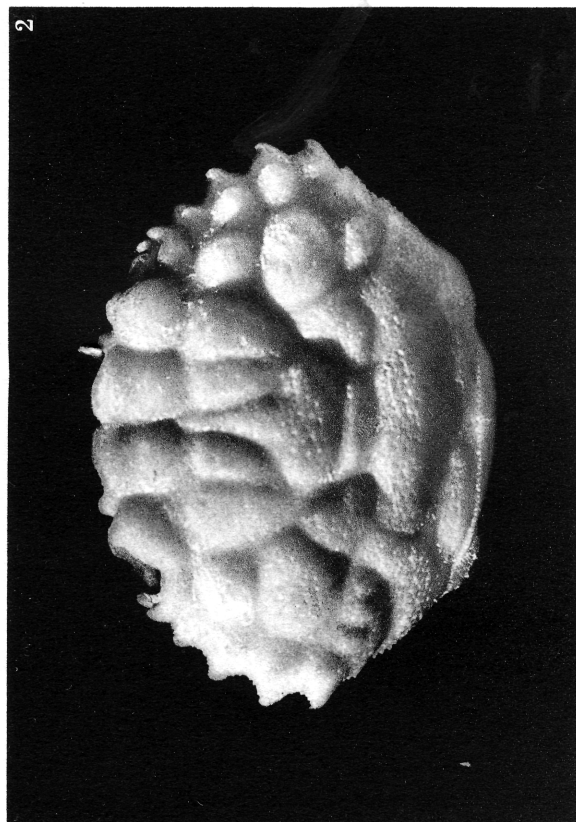


PLANCHE XIII

- Fig. 1-2. — *Phymodius ungulatus* (H. Milne Edwards), carapace :
1. ♂ 15 × 21 mm, La Réunion, E.-L. BOUVIER (?) det. « *Leptodius exaratus*. »
 2. ♂ 18 × 27,5 mm, Tahiti.
- Fig. 3. — *Phymodius ungulatus* (H. Milne Edwards). Photographie montrant la taille réelle de la série des spécimens représentés pl. XI, fig. 1-4; pl. XII, fig. 1-4; pl. XIII, fig. 1-2.

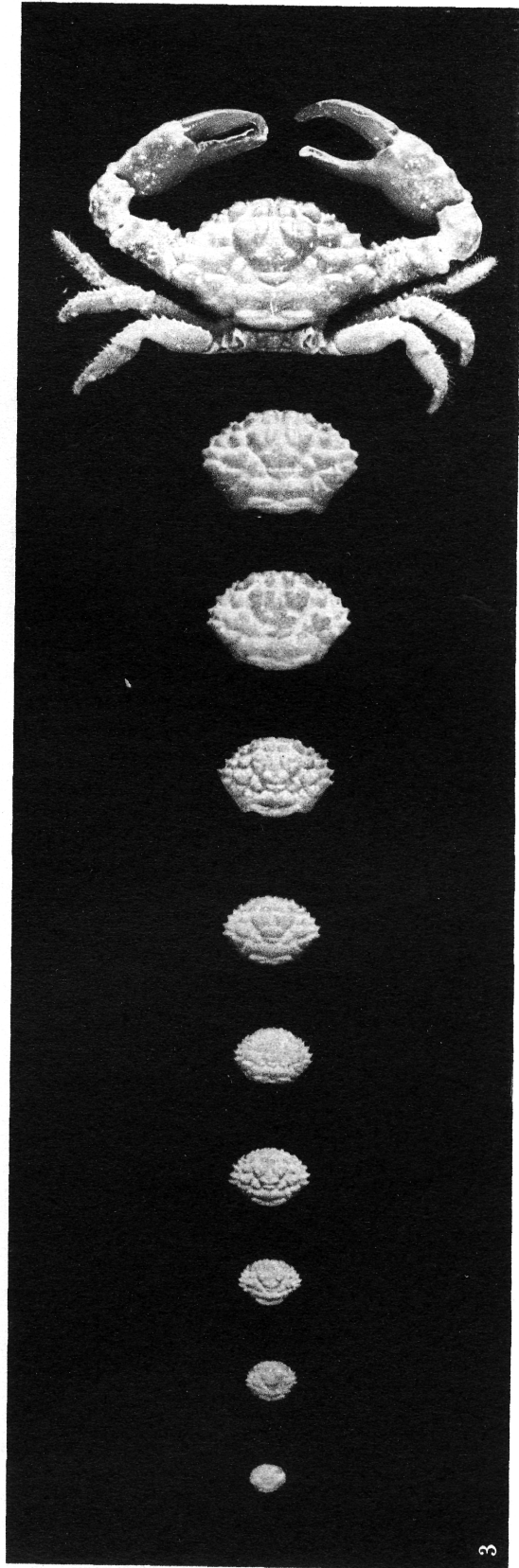
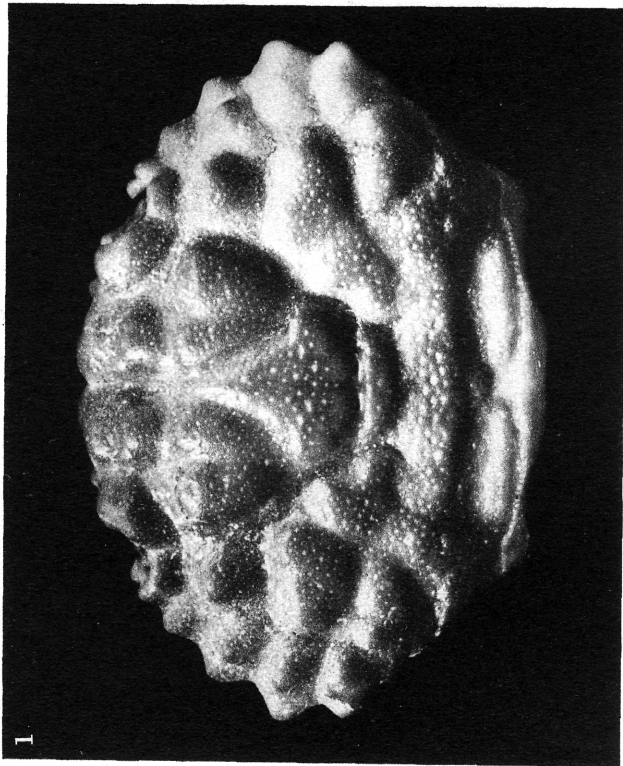
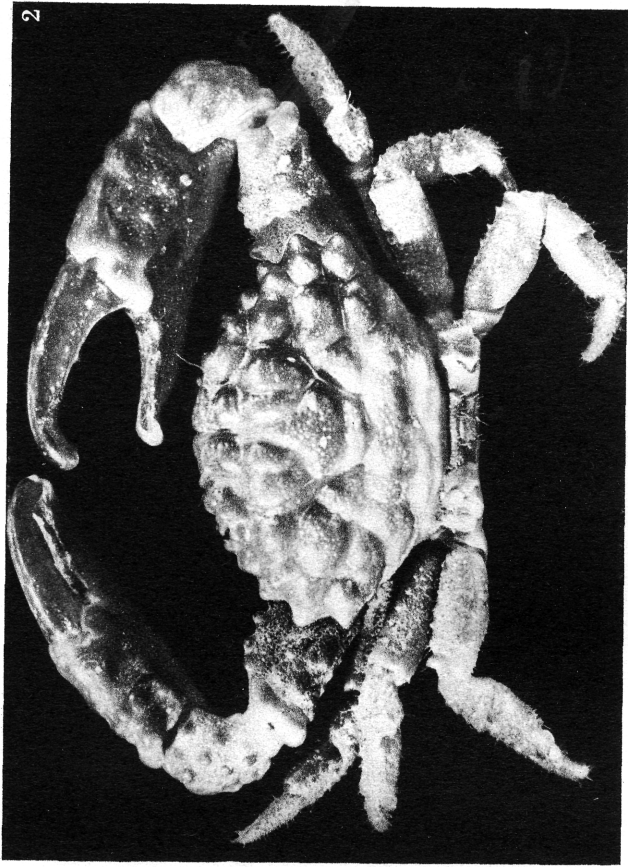


PLANCHE XIV

Fig. 1-3. — *Phymodius ungulatus* (H. Milne Edwards), Madagascar, J. MILLOT coll., H. BALSS det., face ventrale :

1. ♂ 11 × 16 mm.
2. ♂ 12 × 17 mm.
3. ♀ ovigère 11,5 × 16,5 mm.