

PLANCHE VIII

- Fig. 1-2. — *Lachnopus bidentatus* (A. Milne Edwards)  
1. ♂ syntype 14 × 21 mm, îles Hawaiï.  
2. ♂ 9,5 × 14 mm, Tahiti.

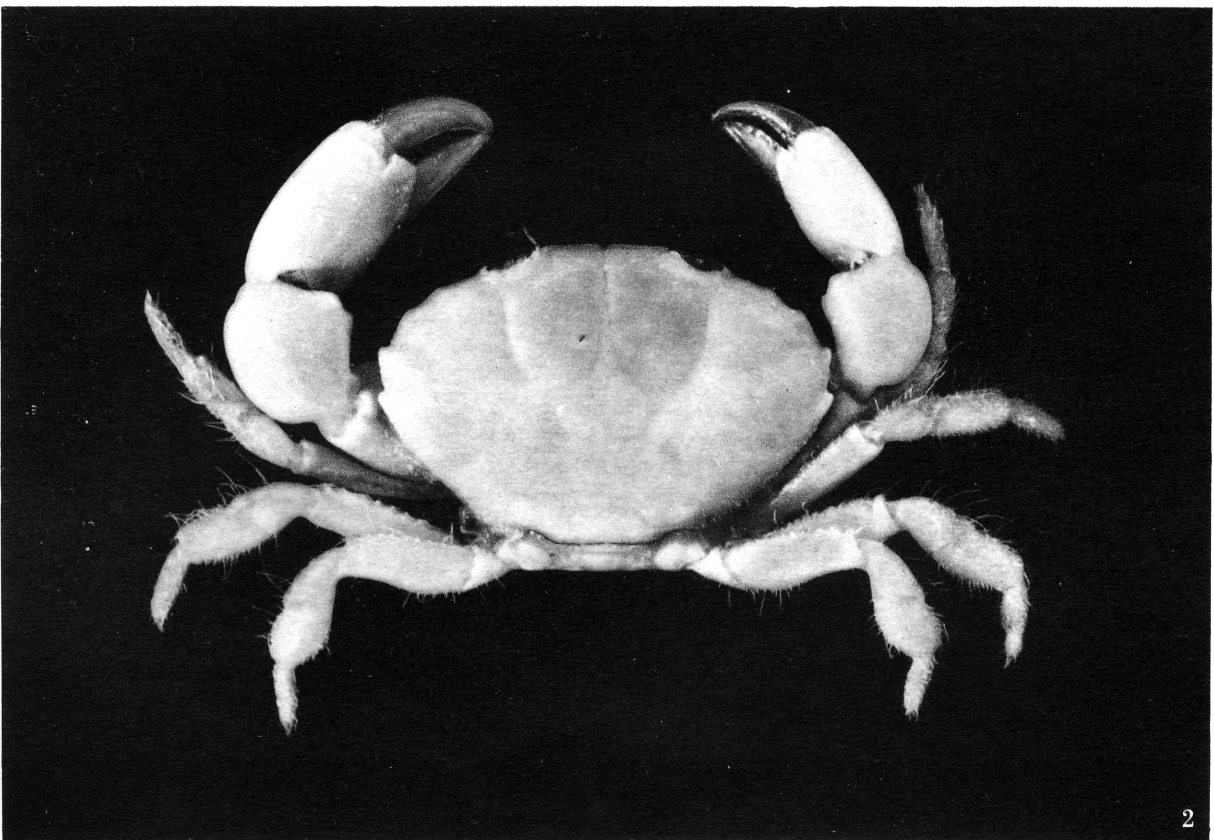
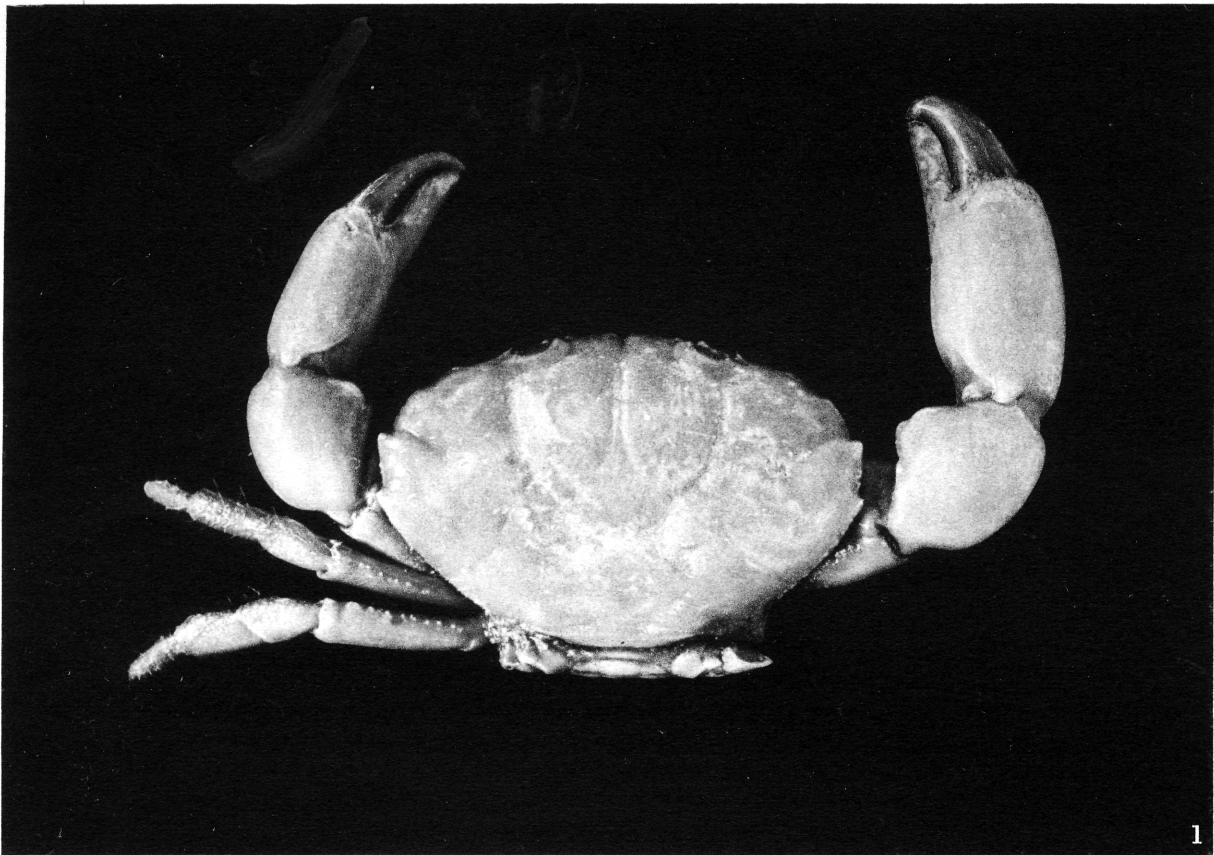


PLANCHE IX

- Fig. 1-2. — *Lachnopus subacutus* (Stimpson) :
1. ♀ 16 × 26 mm, îles Samoa, MARIE coll., A. MILNE EDWARDS det. « *Xantho bidentatus* Edw. », T. ODHNER vid. et det. « *Lachnopus subacutus* Stimpson. »
  2. ♂ 12,5 × 19 mm, Djibouti-Obock, F. JOUSSEAUME coll., NOBILI det. « *Lioxantho tumidus* Alcock. »

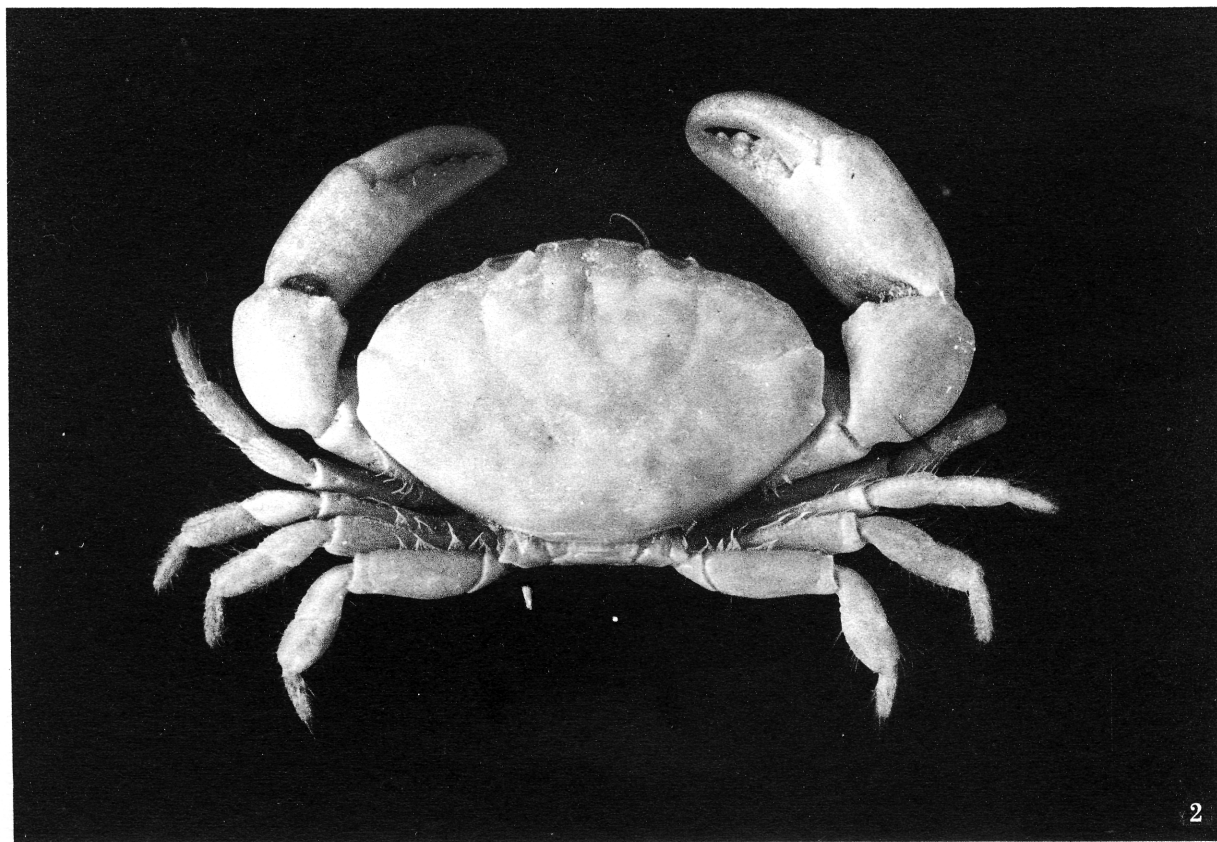
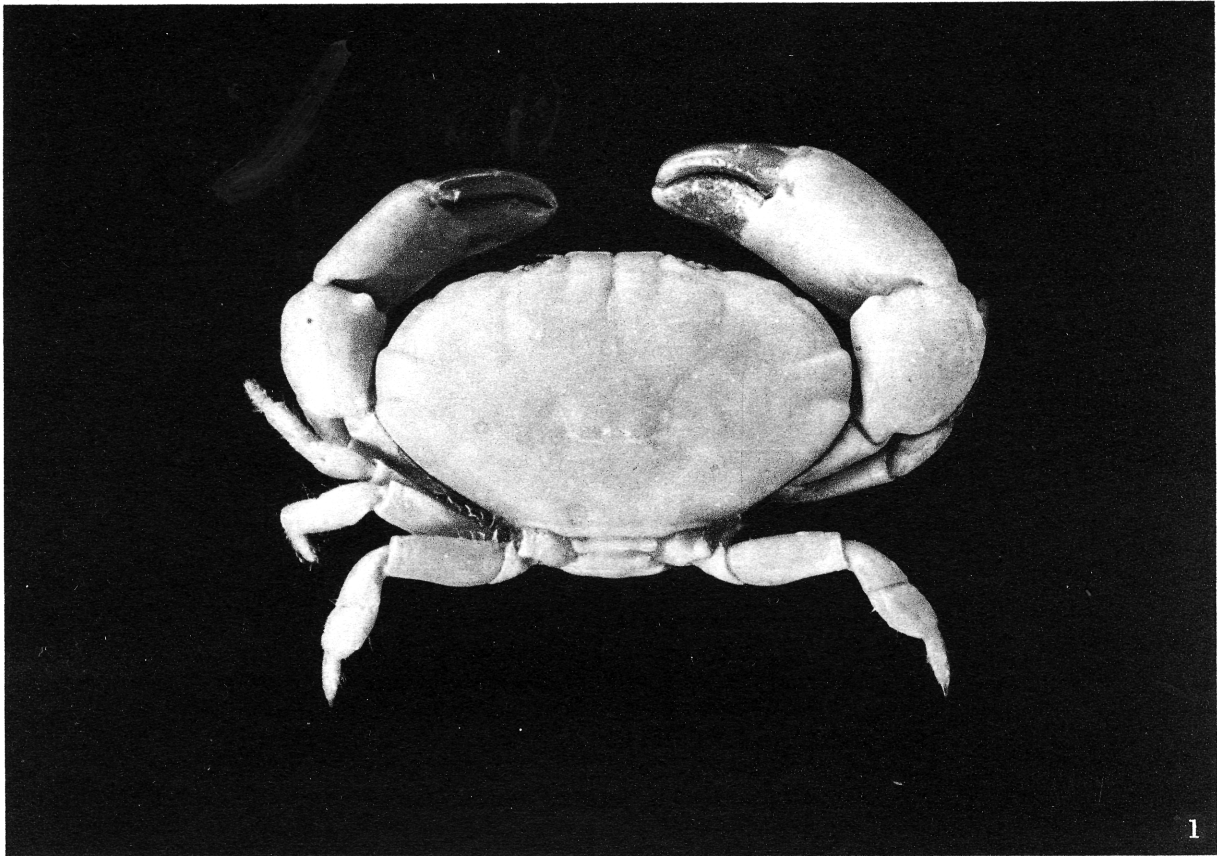


PLANCHE X

Fig. 1-6. — *Phymodius monticulosus* (Dana), carapace :

1. juv. 3,5 × 4,5 mm, La Réunion, St-Pierre, G. PETIT coll.,  
H. BALSS det. « *Chlorodopsis (Cyclodius) ornatus* Dana. »
2. ♂ juv. 5 × 6 mm, Nouvelle-Calédonie, BAUDOUIN coll.,  
A. MILNE EDWARDS det.
3. ♀ 5,8 × 8 mm, Madagascar, Tulear, G. PETIT coll., H. BALSS  
det. « *Chlorodopsis (Cyclodius) ornatus* Dana. »
4. ♂ 8 × 11 mm, *id.*
5. ♂ 11 × 15 mm, Fakahina, G. SEURAT coll., G. NOBILI det.  
« *Cyclodius ornatus*. »
6. ♂ 20 × 29 mm, Nouvelle-Calédonie, BALANSA coll., A. MILNE  
EDWARDS det.

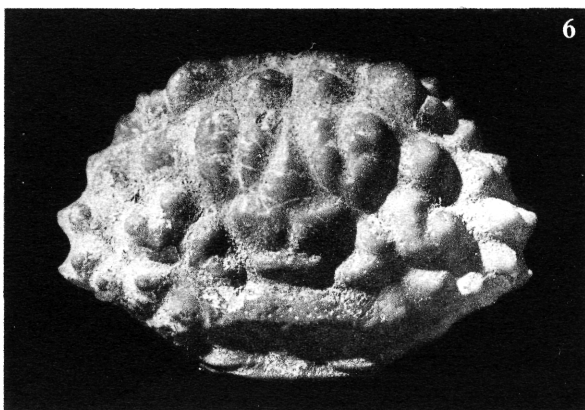
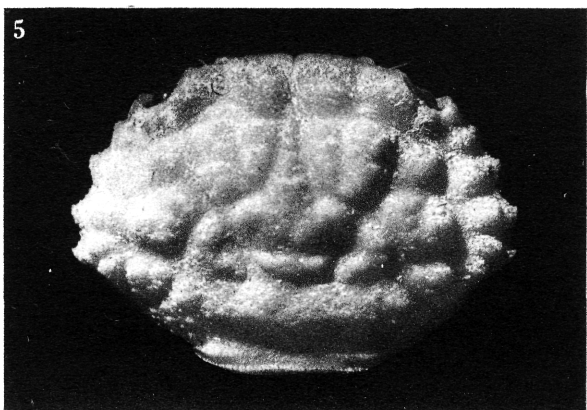
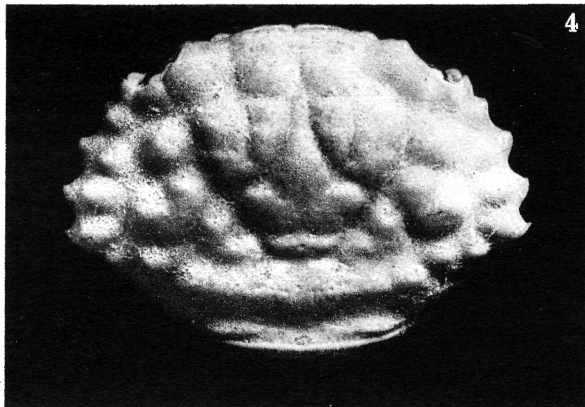
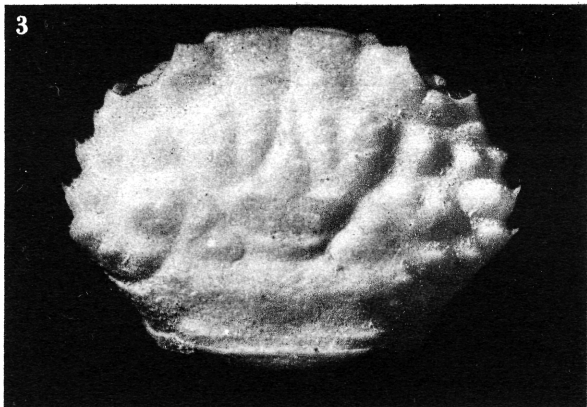
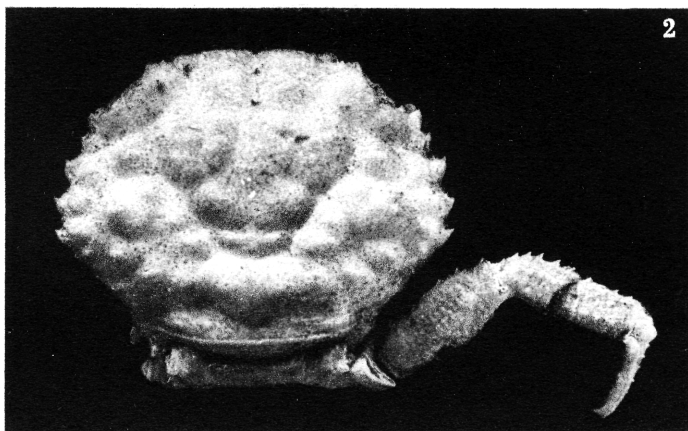
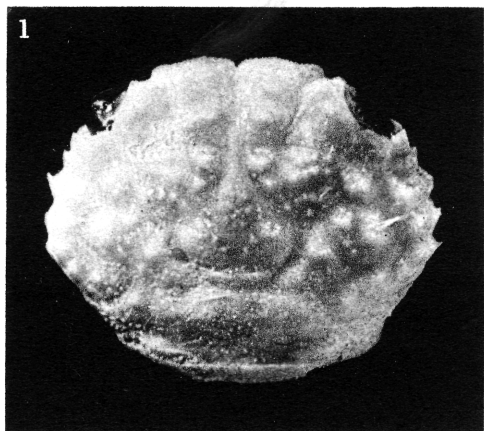


PLANCHE XI

- Fig. 1-4. — *Phymodius ungulatus* (H. Milne Edwards), carapace :
1. juv.  $4 \times 5$  mm, Tuamotu, G. SEURAT coll., G. NOBILI det.  
« *Cyclodius gracilis* Dana. »
  2. ♀ juv.  $4,9 \times 6,7$  mm, localité inconnue.
  3. ♂  $5,6 \times 8,1$  mm, localité inconnue.
  4. ♂  $6,6 \times 9,5$  mm, Nouvelle-Calédonie, BALANSA coll.