

FIG. 1. ASTACUS ASTACUS (LINNÉ)

FIG. 2. ASTACUS PALLIPES ITALICUS FAXON

FIG. 3. ASTACUS PALLIPES LEREBoulLET

PLATE 9.

PLATE 9.

- Fig. 1.— *Parastacus spinifrons* (Philippi)? Mus. d'Hist. Nat., Paris. × 1.
Fig. 2.— *Astacus nigrescens fortis* Faxon. ♂. Type. Fall R., Fall City Mills, Cal., Aug. 29, 1898.
U. S. N. M. Slightly enlarged.

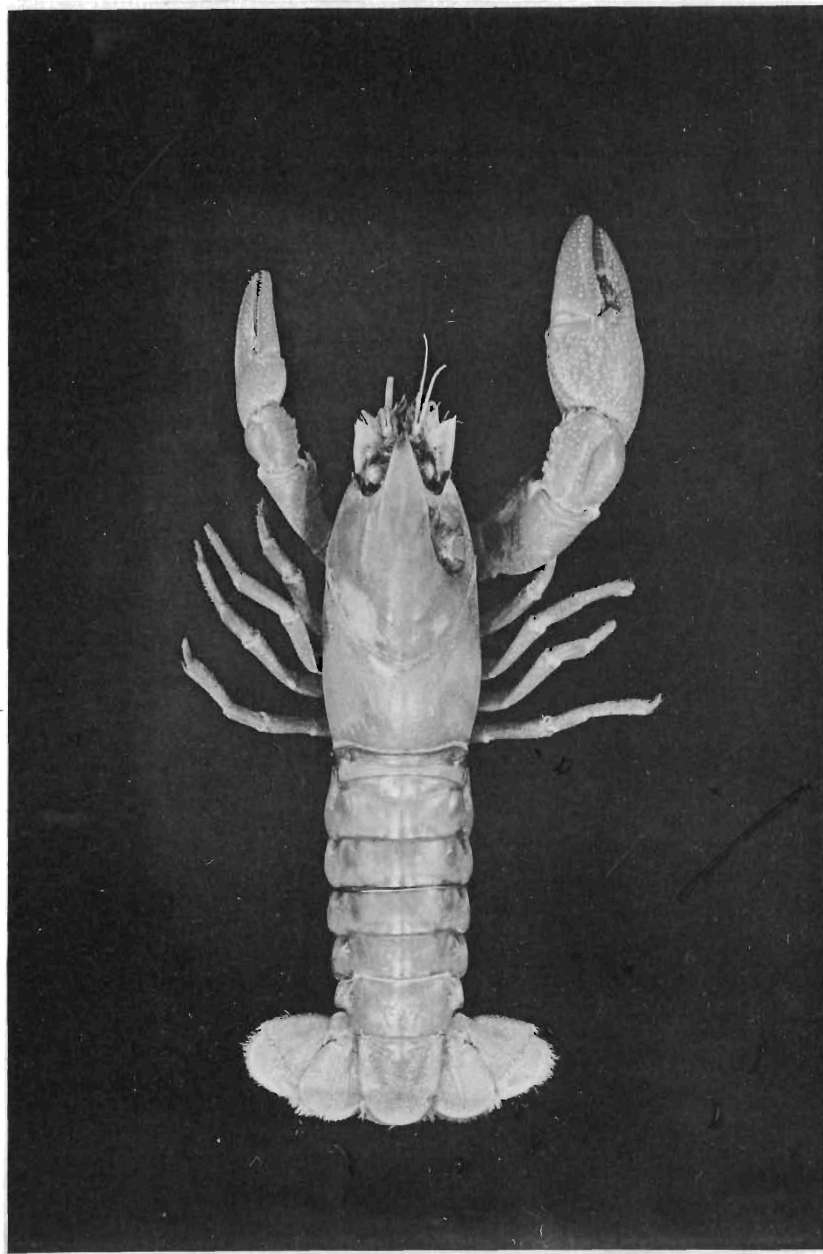


FIG. 1. PARASTACUS SPINIFRONS (PHILIPPI) ?

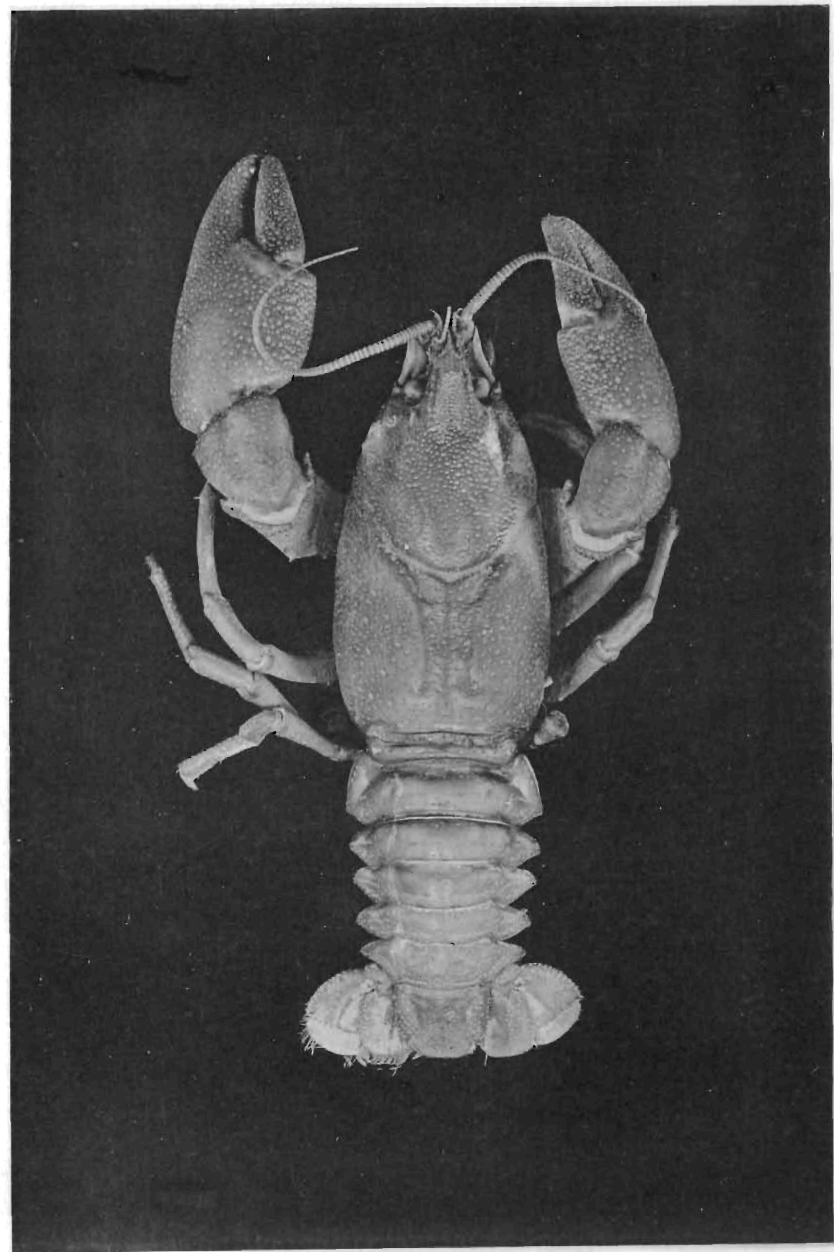


FIG. 2. ASTACUS NIGRESCENS FORTIS FAXON

PLATE 10.

PLATE 10.

- Fig. 1.— *Astacus gambelii connectens* Faxon. ♂. Type. Snake R., Upper Salmon Falls, Idaho, Oct. 3, 1894. U. S. N. M., No. 23,096. Enlarged.
- Fig. 2.— *Astacus gambelii* with most of the characters of *A. g. connectens*. ♂. Mouth of St. Joe R., Coeur d'Alene Lake, Idaho. U. S. N. M. × 1.

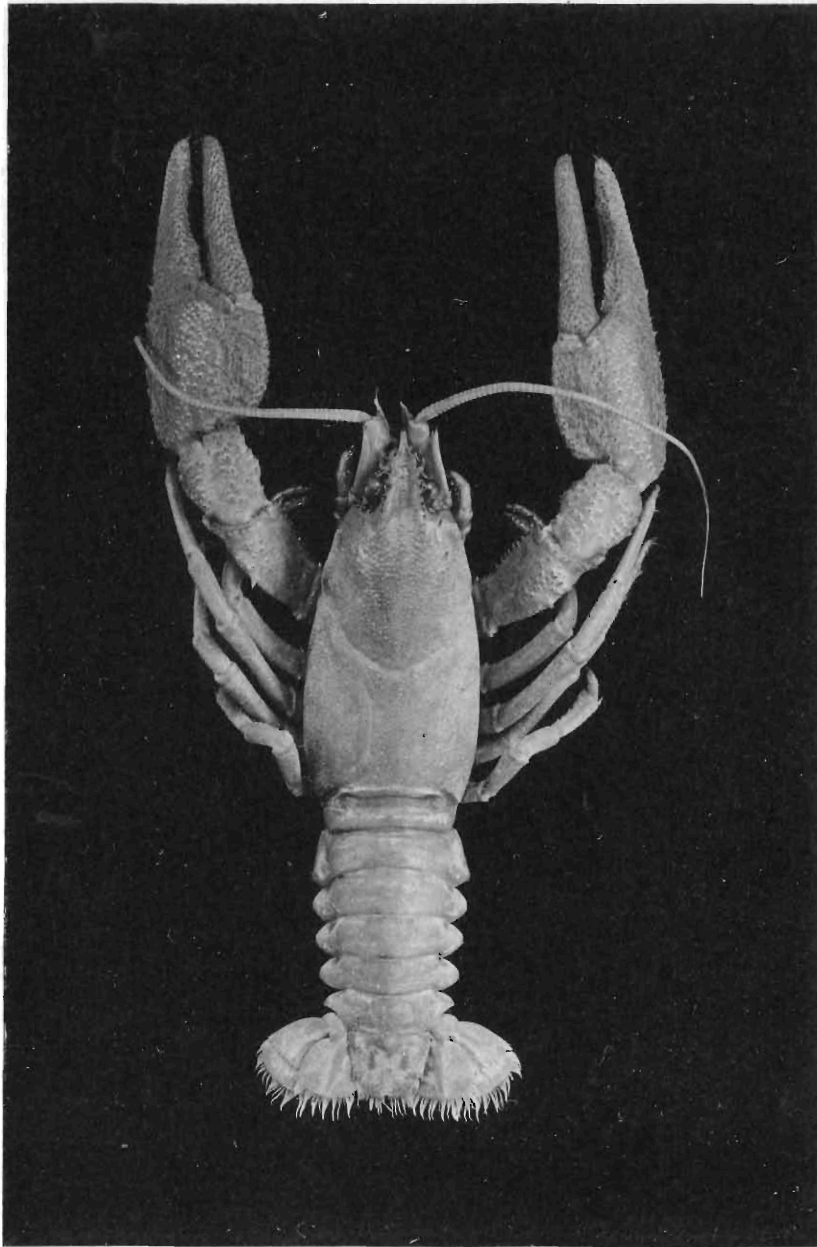


FIG. 1. *ASTACUS GAMBELII CONNECTENS FAXON*

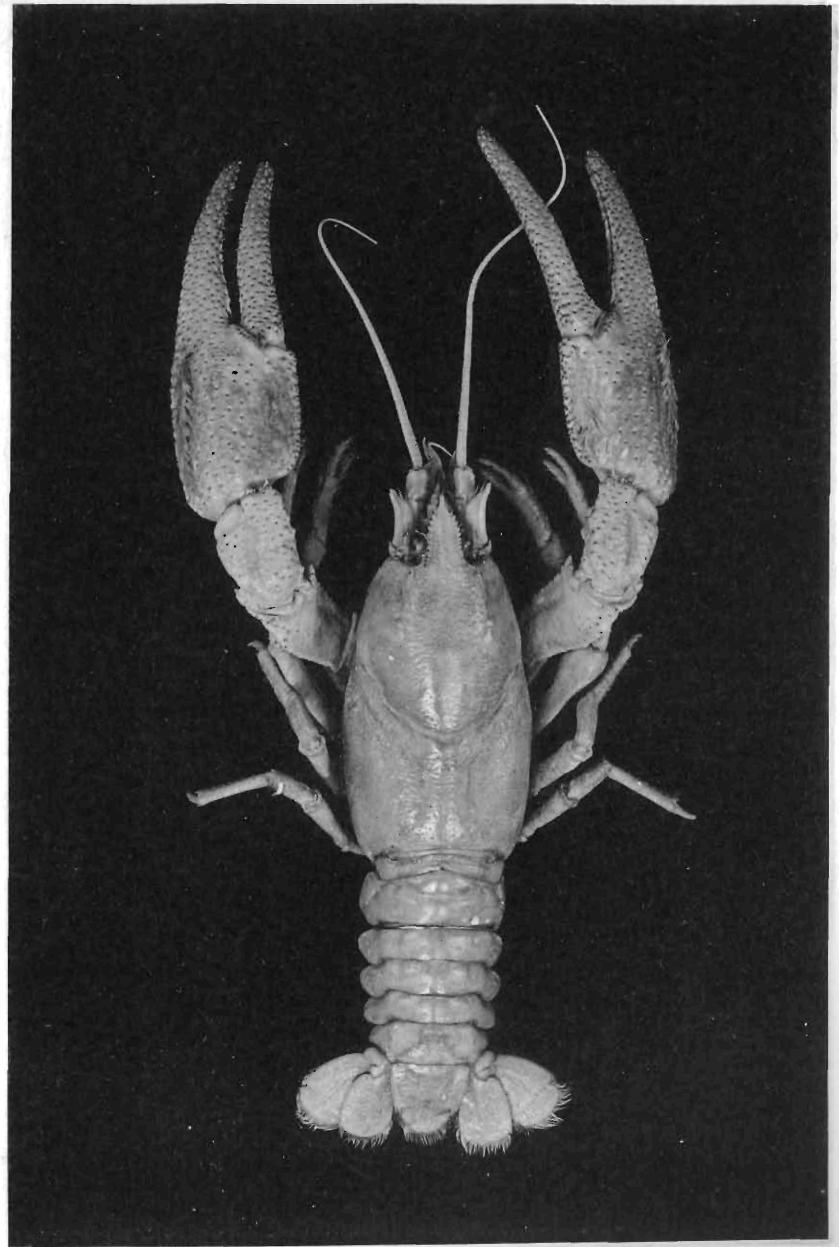


FIG. 2. *ASTACUS GAMBELII CONNECTENS FAXON*

PLATE 11.

PLATE 11.

- Fig. 1.— *Astacus klamathensis* Stimpson. ♂. Portland, Or. U. S. N. M., slightly enlarged. Showing the chelipeds of normal shape.
- Fig. 2.— *Astacus klamathensis* Stimpson. ♂. Portland, Or. U. S. N. M., slightly reduced. Showing the abnormal, atavistic form of the regenerated claw of the left side.

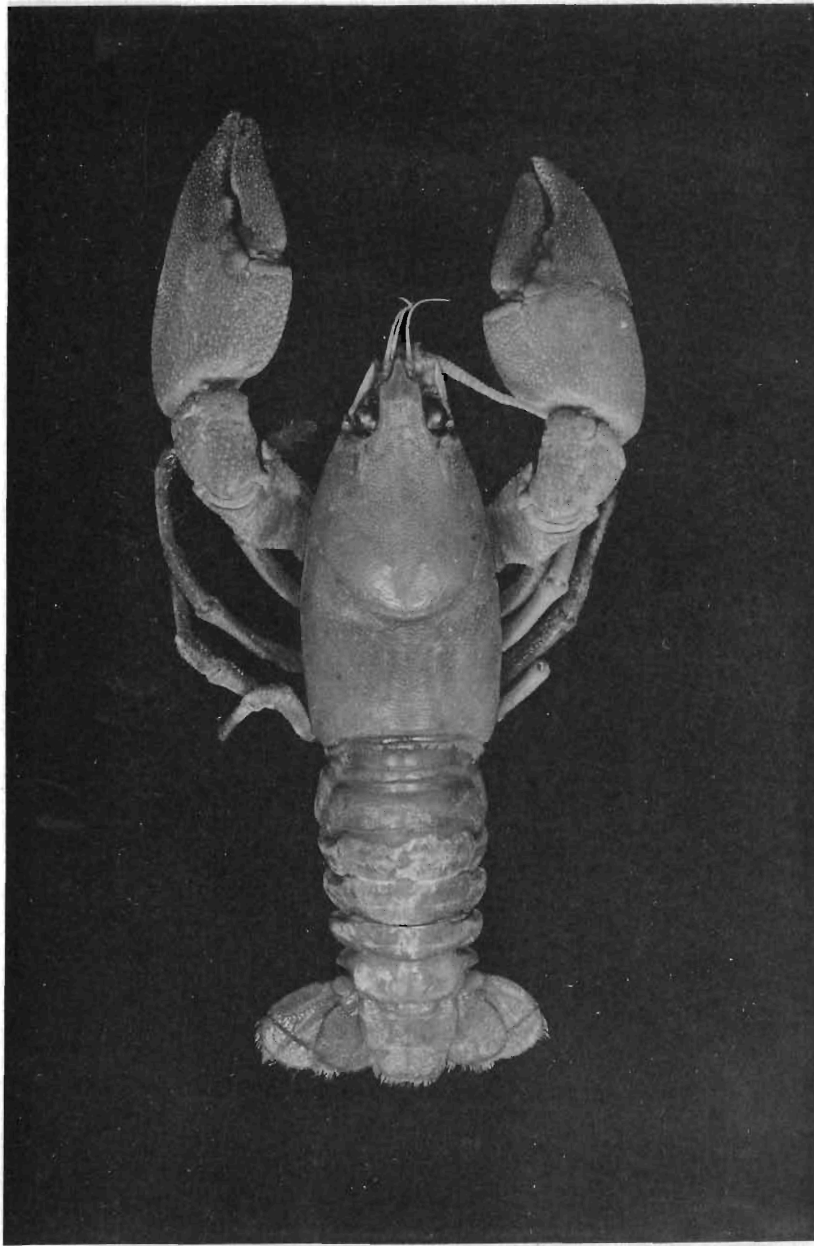


FIG. 1. *ASTACUS KLAMATHENSIS* STIMPSON

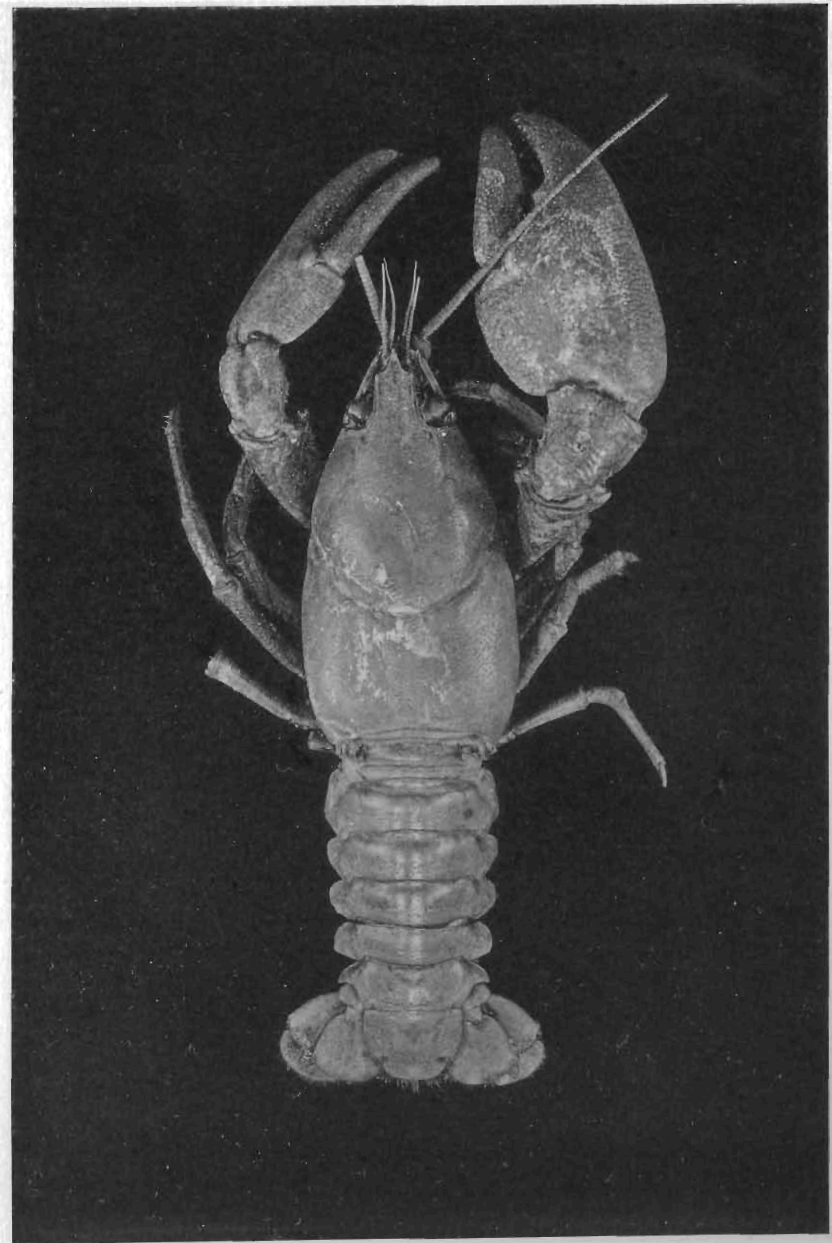


FIG. 2. *ASTACUS KLAMATHENSIS* STIMPSON

PLATE 12.