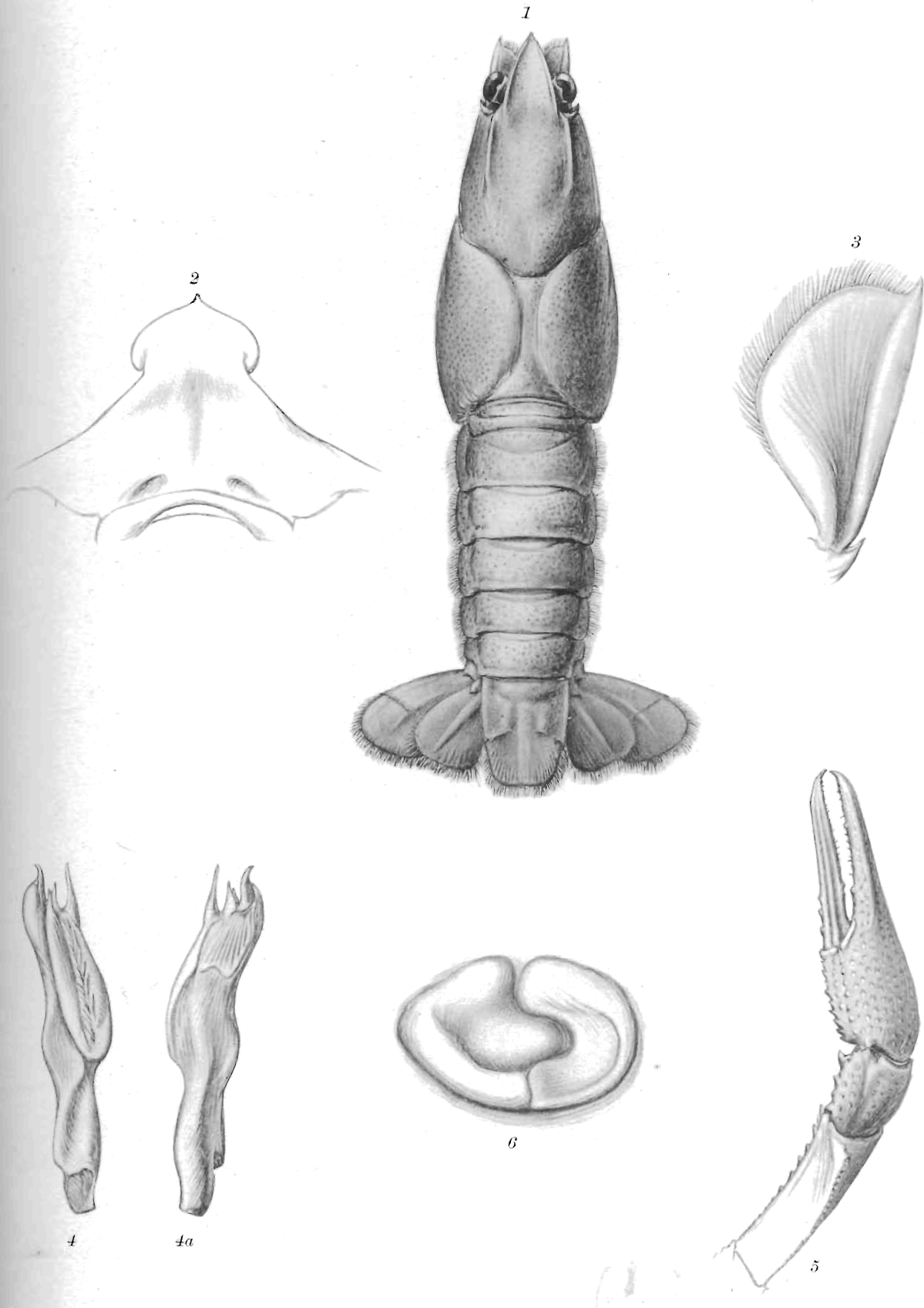


PARASTACUS ARAUCANIUS FAXON

PLATE 5.

PLATE 5.

- Fig. 1.—*Cambarus viae-viridis* Faxon. ♂, form I. St. Francis R., Greenway, Ark., Aug., 1894. Type.  
M. C. Z., No. 7,336.
- Fig. 2.— Epistoma of the same.
- Fig. 3.— Antennal scale of the same.
- Fig. 4.— Gonopod of the same, inner side.
- Fig. 4a.— Gonopod of the same, outer side.
- Fig. 5.— Right cheliped of the same.
- Fig. 6.— Annulus ventralis of the female *Cambarus viae-viridis*.



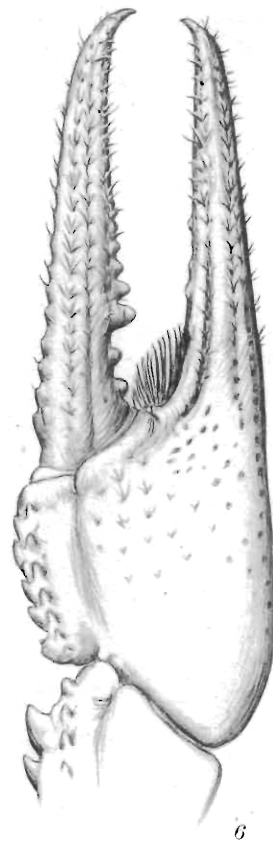
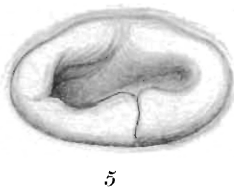
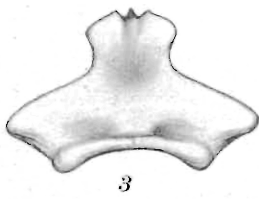
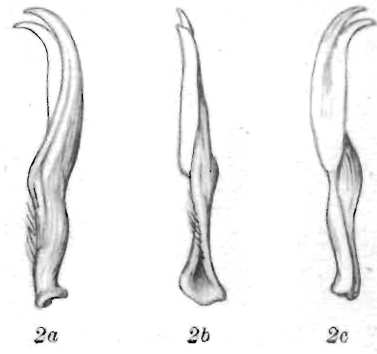
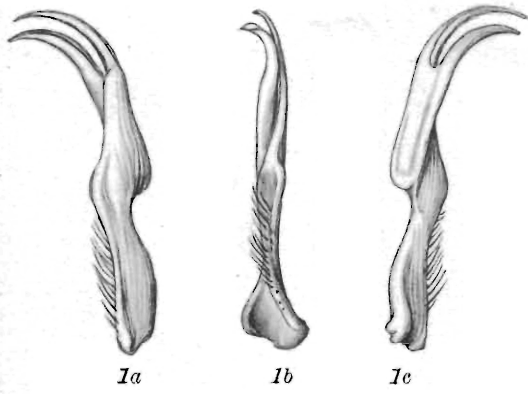
CAMBARUS VIAE-VIRIDIS FAXON



PLATE 6.

PLATE 6.

- Fig. 1.— *Cambarus immunis spirostris* Faxon. Pontoosuc Lake, Lanesboro, Mass., Aug. 12, 1911.  
M. C. Z., No. 7,363. Gonopod of the ♂, form I. 1a, outside, 1b, front, 1c, inside.
- Fig. 2.— Gonopod of the ♂, form II. of the same, 2a, outside, 2b, front, 2c, inside.
- Fig. 3.— Epistoma of the same.
- Fig. 4.— Antennal scale of the same.
- Fig. 5.— Annulus ventralis of the ♀ of the same.
- Fig. 6.— Chela of the ♂, form I. of the same.



CAMBARUS IMMUNIS SPINIROSTRIS FAXON

PLATE 7.

PLATE 7.

- Fig. 1.—*Cambarus hagenianus* Faxon. Muldon, Miss. Gonopod of ♂, form I. 1a, outer side, 1b, inner side, 1c, front.
- Fig. 2.—*Cambarus pellucidus* (Tellkamp). Mammoth Cave, Ky. Gonopod of ♂, form I. 2a, outer side, 2b, inner side, 2c, front.
- Fig. 3.—*Cambarus validus* Faxon. Huntsville, Ala. Type. M. C. Z., No. 301. Gonopod (♂ form I). 3a, outer side, 3b, inner side, 3c, front.
- Fig. 4.—*Cambarus validus* Faxon. Type. Antennal scale.
- Fig. 5.—*Astacus nigrescens fortis* Faxon. ♂. Fall R., Fall City Mills, Cal. Type. U. S. N. M. Antennal scale.
- Fig. 6.—*Astacus gambelii connectens* Faxon. ♂. Snake R., Upper Salmon Falls, Idaho. Type. U. S. N. M., No. 23,096. Antennal scale.
- Fig. 7.—*Cambarus hagenianus* Faxon. ♀. Muldon, Miss. Annulus ventralis.
- Fig. 8.—*Cambarus validus* Faxon. ♂. Type. Epistoma.
- Fig. 9.—*Astacus nigrescens fortis* Faxon. ♂. Type. Epistoma.
- Fig. 10.—*Astacus gambelii connectens* Faxon. ♂. Type. Epistoma.





1a



1b



1c



2a



2b



2c



3a



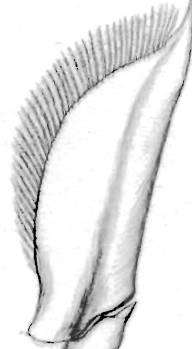
3b



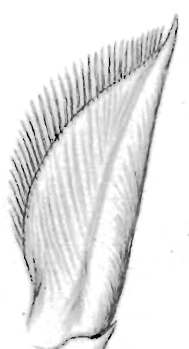
3c



4



5



6



7



8



9



10

PLATE 8.

PLATE 8.

Fig. 1.— *Astacus astacus* (Linné). ♂. Leipzig, Germany. M. C. Z., No. 3403.

Fig. 1a.— Gonopod of the same.

Fig. 1b.— Chela of the same.

Fig. 1c.— Antennal scale of the same.

Fig. 1d.— Anterior process of the epistoma of the same.

Fig. 1e.— Profile of anterior end of rostrum of the same.

Fig. 1f.— Pleura of the second and third abdominal segments of the same.

Fig. 2.— *Astacus pallipes italicus* Faxon. ♂. Sarno R., Pompeii, Italy, June 10, 1900. Type. U. S. N. M., No. 28,638.

Fig. 2a.— Gonopod of the same.

Fig. 2b.— Chela of the same.

Fig. 2c.— Antennal scale of the same.

Fig. 2d.— Anterior process of the epistoma of the same.

Fig. 2e.— Profile of anterior end of rostrum of the same.

Fig. 2f.— Pleura of the second and third abdominal segments of the same.

Fig. 3.— *Astacus pallipes* Lereboullet. ♂. Saone R., Lyons, France. M. C. Z., No. 3,372.

Fig. 3a.— Gonopod of the same.

Fig. 3b.— Chela of the same.

Fig. 3c.— Antennal scale of the same.

Fig. 3d.— Anterior process of the epistoma of the same.

Fig. 3e.— Profile of anterior end of rostrum of the same.

Fig. 3f.— Pleura of the second and third abdominal segments of the same.