

66k. CAMBARUS BARTONII CAVATUS.

Cambarus bartonii cavatus Hay, Proc. U. S. Nat. Mus., Sept. 23, 1902, 25, p. 435.

Type locality: — Powell River at Tazewell, Claiborne Co., Tennessee. *Types*, U. S. N. M., No. 25,017.

67. CAMBARUS LATIMANUS.

Astacus latimanus LeConte, Proc. Acad. Nat. Sci. Philad., 1855, 7, p. 402.

Type locality: — Athens, Clarke Co., Georgia. *Cotypes*, M. C. Z., No. 3,378 (1 ♂ f. I); Acad. Nat. Sci. Philad. (1 ♀); *paratypes*, M. C. Z., No. 236.

67a. CAMBARUS LATIMANUS STRIATUS.

Cambarus latimanus striatus Hay, Proc. U. S. Nat. Mus., Sept. 23, 1902, 25, p. 437.

Type locality: — Nashville, Tenn. *Type*, U. S. N. M., No. 25,019; *paratype*, M. C. Z., No. 7,348.

68. CAMBARUS GRAYSONI.

Cambarus graysoni Faxon, supra, p. 393.

Type locality: — Bear Creek, Grayson Springs, Grayson Co., Kentucky. *Types*, M. C. Z., No. 3,593.

69. CAMBARUS ORTMANNI.

Cambarus ortmanni Williamson, 31st Ann. Rept. Dept. Geol. Indiana, 1907, p. 754.

Type locality: — Six-Mile Creek and Craven Ditch, tributary to Wabash River, above Bluffton, Wells Co., Indiana. *Types*, Carnegie Mus., Pittsburgh; *paratypes*, Coll. W. P. Hay; M. C. Z., No. 7,587 (1 ♀).

70. CAMBARUS CAROLINUS.

Astacus (Cambarus) carolinus Erichson, Arch. Naturgesch., 1846, 12, p. 96.

Type locality: — Farm called "Tiger Hall," near Greenville, Greenville Co., S. C. *Type*, Berlin Mus. (1 ♂).

70a. CAMBARUS CAROLINUS DUBIUS.

Cambarus dubius Faxon, Proc. Amer. Acad., 1884, 20, p. 114.

Type locality: — Cranberry Summit [now Terra Alta], Preston Co., West Virginia. *Type*, M. C. Z., No. 3,631.

70b. CAMBARUS CAROLINUS MONONGALENSIS.

Cambarus monongalensis Ortmann, Annals Carnegie Mus., 1905, 3, p. 395.

Type locality: — Head of Gordon's Valley, Edgewood Park, Allegheny Co., Pa. *Types*, Carnegie Mus.; *paratypes*, M. C. Z., No. 6,953; U. S. N. M., No. 30,613.

71. CAMBARUS DIOGENES.

Cambarus diogenes Girard, Proc. Acad. Nat. Sci. Philad., 1852, 6, p. 88.

?*Cambarus nebrascensis* Girard, Proc. Acad. Nat. Sci. Philad., 1852, 6, p. 91.

Type locality: — Fort Pierre, Nebraska [now in Stanley Co., South Dakota].

Cambarus obesus Hagen, Mem. M. C. Z., 1870, 2, p. 81. *Type locality*: — Lawn Ridge, Illinois. *Types*, M. C. Z., No. 195; *paratypes*, M. C. Z., No. 165 (Belleville, Saint Clair Co., Ill.), No. 336 (Evanston, Cook Co., Ill.), No. 229 (Arkansas), No. 3,363 (Petersburg, Dinwiddie Co., Va.); Mus. Hist. Nat. Paris (Lawn Ridge, Ill., Belleville, Ill.); St. Petersburg Mus. (Belleville, Ill.).

Type locality: — Near Washington, D. C. *Paratype* (?), Acad. Nat. Sci. Philad.

71a. CAMBARUS DIOGENES LUDOVICIANUS.

Cambarus diogenes, var. *ludoviciana* Faxon, Proc. Amer. Acad., 1884, 20, p. 144.

Type locality: — New Orleans, La. *Cotypes*, U. S. N. M., No. 5,625; M. C. Z., No. 3,617.

72. CAMBARUS ARGILLICOLA.

Cambarus argillicola Faxon, Proc. Amer. Acad., 1884, 20, p. 115.

Type locality: — Detroit, Mich. *Types*, M. C. Z., No. 3,459.

73. CAMBARUS UHLERI.

Cambarus uhleri Faxon, Proc. Amer. Acad., 1884, 20, p. 116.

Type locality: — Swamp on Eastern Road near Felsburg, Somerset Co., Maryland. *Type* M. C. Z., No. 3,634 (1 ♂ f. I.); *paratypes*, M. C. Z., No. 3,633, 3,635, 3,636 (Dorchester, Somerset, and Worcester Cos., Md.).

74. CAMBARUS CLYPEATUS.¹

Cambarus clypeatus Hay, Proc. U. S. Nat. Mus., Oct. 11, 1899, 22, p. 122.

Type locality: — Bay Saint Louis, Hancock Co., Miss. (found in a skiff). *Type*, U. S. N. M., No. 22,778 (♀).

¹ The position of this species is doubtful, as only the female is known.

DOUBTFUL SPECIES, NOT INCLUDED IN THE PRECEDING LIST.

1. CAMBARUS MANICULATUS.

Astacus maniculatus LeConte, Proc. Acad. Nat. Sci. Philad., 1855, 7, p. 401.

Type locality: — In ditches, Lower Georgia.

2. CAMBARUS STYGIUS.

Cambarus stygius Bundy, Bull. Illinois State Lab. Nat. Hist., 1876, 1, p. 3.

Type locality: — Lake Michigan at Racine, Racine Co., Wisconsin (washed up during a violent storm).

3. CAMBARUS TYPHLOBIUS.

Cambarus typhlobius Joseph, 57th Jahresber. Schlesischen Gesellsch. vaterl. Cult., 1879, 1880, p. 202.

Cambarus coecus Joseph, Berl. Entomol. Zeitschr., Dec. 1881, 25, p. 237.

Cambarus stygius Joseph, Berl. Entomol. Zeitschr., April, 1882, 26, p. 12 (nec Bundy, 1876).

Type locality: — Recca River, Grotto of St. Kanzian at Metaùn, near Divazza, Carniola (doubtless an error).

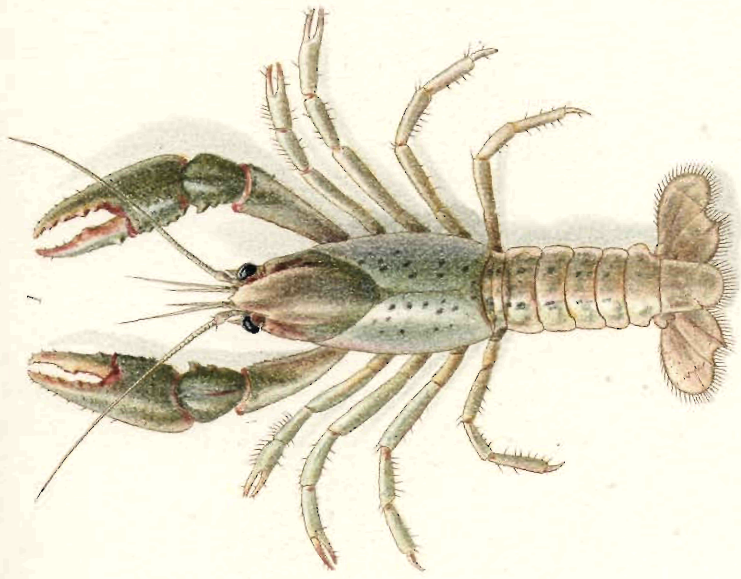
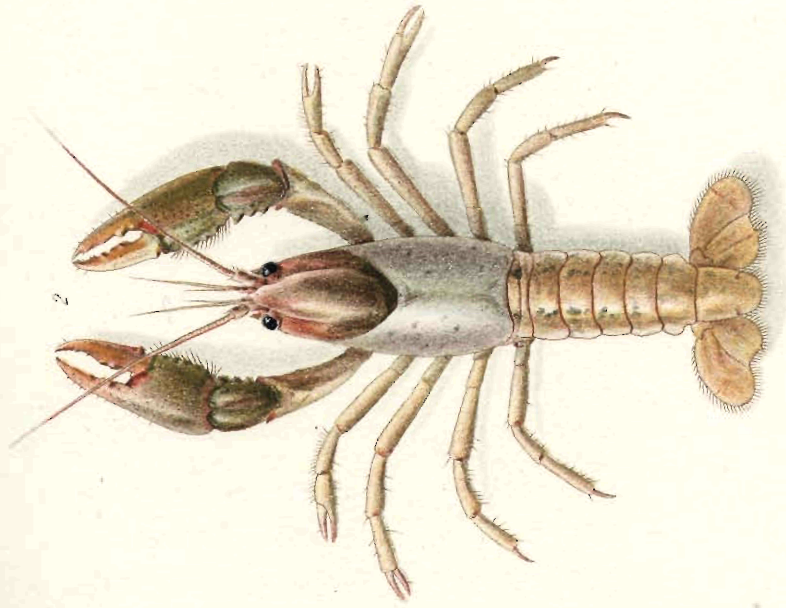
EXPLANATION OF PLATES.

NOTE.— Plates 1-3 are after colour-drawings of living specimens, by E. N. Fischer. Plates 4-8 are from India-ink drawings by E. N. Fischer. Plates 9-13 are from photographs by George Nelson.

PLATE 1.

PLATE 1.

Fig. 1.— *Cambarus hagenianus* Faxon. ♀. Muldon, Miss. M. C. Z., No. 7,425. × 1.
Fig. 2.— *Cambarus hagenianus* Faxon. ♂. Muldon, Miss. M. C. Z., No. 7,425. × 1.



E. M. FISCHER, del. & sculp.

E. M. FISCHER, pinxit.

PLATE 2.

PLATE 2.

- Fig. 1.— *Cambarus immunis spinirostris* Faxon. Young ♀. Pontoosuc Lake, Lanesboro, Mass., Aug. 12, 1911. M. C. Z., No. 7,364. × 3.
- Fig. 2.— *Cambarus immunis spinirostris* Faxon. ♂, form I. Pontoosuc Lake, Lanesboro, Mass., Aug. 12, 1911. M. C. Z., No. 7,363. × 1.



E. N. Fischer pinxt.



B. Meisner del. Duncker

PLATE 3.

PLATE 3.

Cambarus bartonii robustus (Girard). Bog River, St. Lawrence Co., N. Y., July, 1912. M. C. Z., No.
7,440. $\times 1\frac{1}{2}$.



PLATE 4.

PLATE 4.

Fig. 1.—*Parastacus araucanius* Faxon. ♂. Corral, Chile, Dec. 18, 1908. Type. M. C. Z., No. 7,355.

Fig. 2.— Epistoma of the same.

Fig. 3.— Antennal scale from the right antenna, upper face.