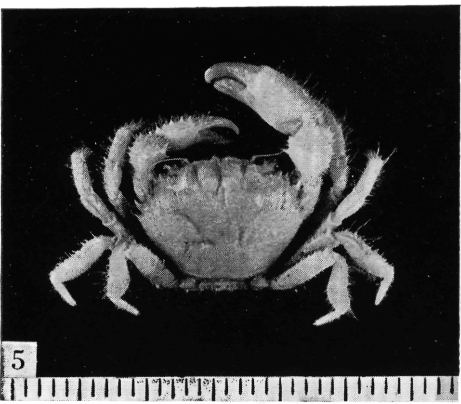
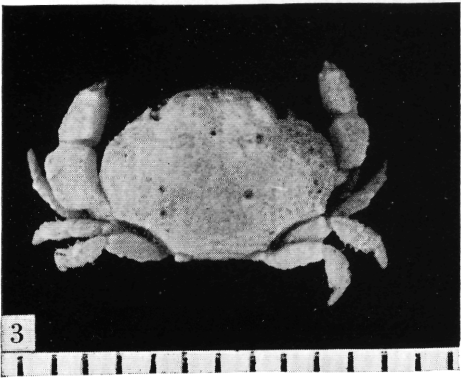
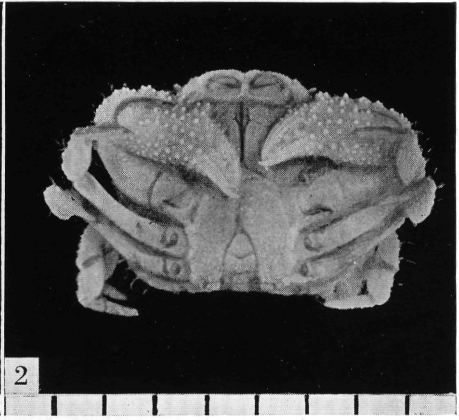


## PLATE 75

- Fig. 1 *Actaea angusta* Rathbun, male, dorsal view (p. 433)  
Fig. 2 *Actaea angusta* Rathbun, male, ventral view  
Fig. 3 *Lipaesthesius lecanus* Rathbun, female, dorsal view (p. 441)  
Fig. 4 *Lipaesthesius lecanus* Rathbun, female, frontal view  
Fig. 5 *Medaeus spinulifer* (Rathbun), male, dorsal view (p. 443)  
Fig. 6 *Medaeus spinulifer* (Rathbun), male, ventral view



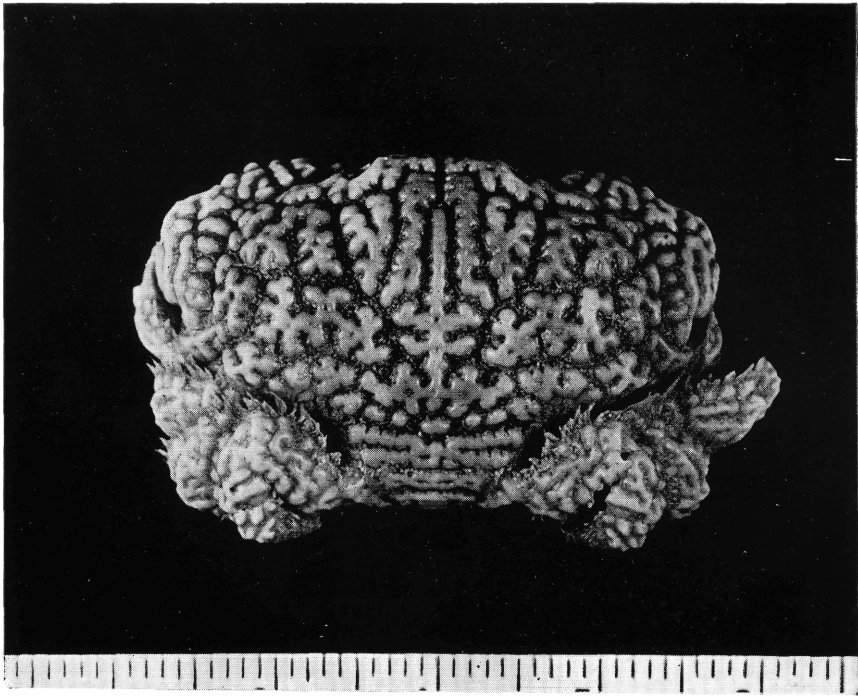
## PLATE 76

*Glyptoxanthus hancocki* Garth (p. 437)

Female holotype

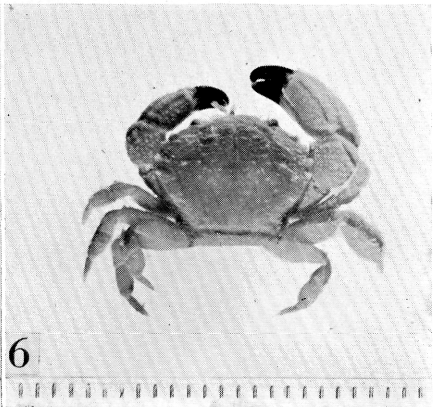
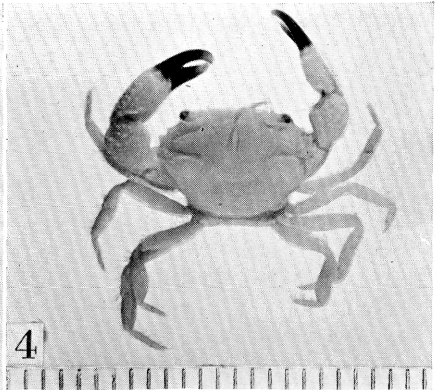
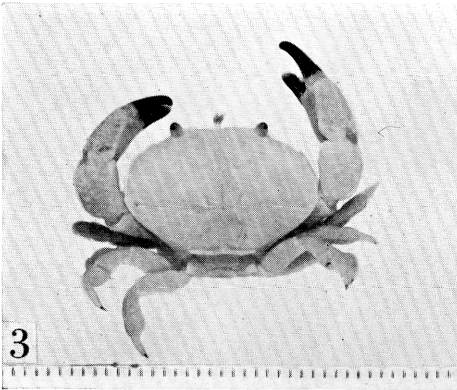
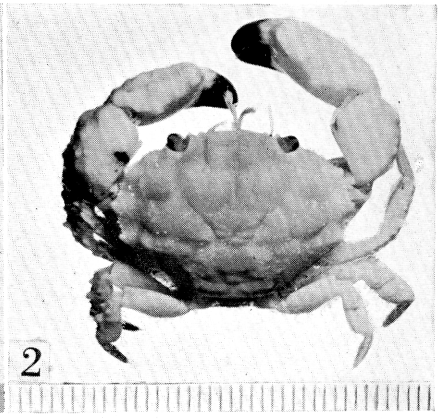
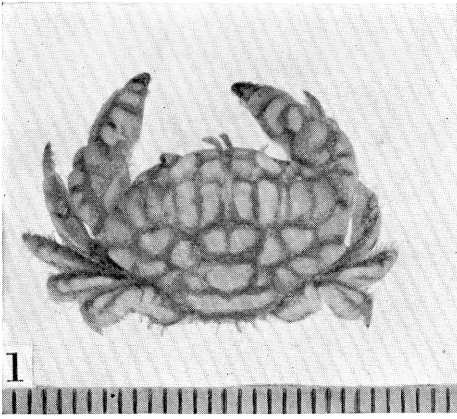
Fig. 1 Dorsal view

Fig. 2 Ventral view



## PLATE 77

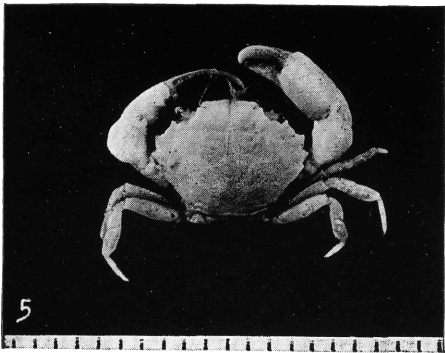
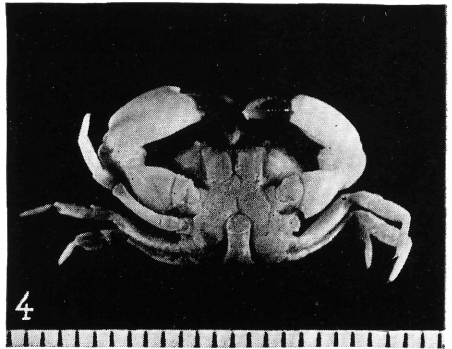
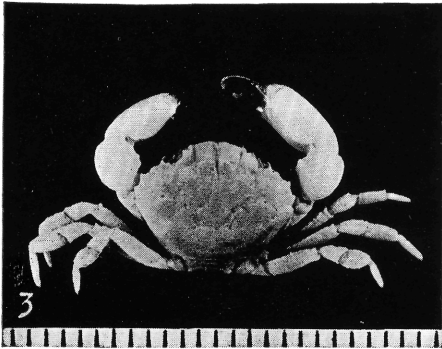
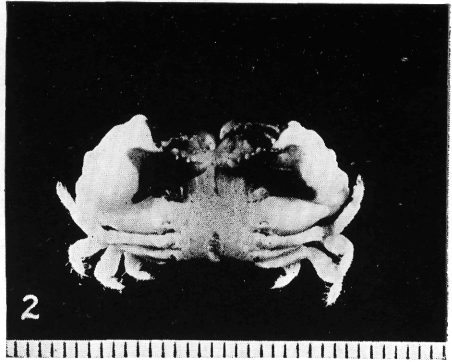
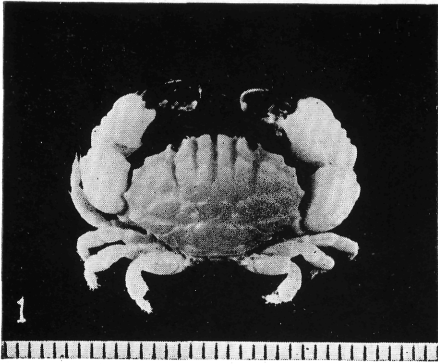
- Fig. 1 *Actaea sulcata* Stimpson, male, dorsal view (p. 434)  
Fig. 2 *Medaeus lobipes* Rathbun, male, dorsal view (p. 442)  
Fig. 3 *Leptodius cooksoni* Miers, male, dorsal view (p. 448)  
Fig. 4 *Micropanope polita* Rathbun, male, dorsal view (p. 459)  
Fig. 5 *Lophoxanthus lamellipes* (Stimpson), male, dorsal view (p. 451)  
Fig. 6 *Micropanope xantusii* (Stimpson), male, dorsal view (p. 457)



## PLATE 78

- Fig. 1 *Paraxanthias insculptus* (Stimpson), male, dorsal view (p. 467)  
Fig. 2 *Paraxanthias insculptus* (Stimpson), male, ventral view  
Fig. 3 *Lophopanopeus maculatus* Rathbun, male, dorsal view (p. 453)  
Fig. 4 *Lophopanopeus maculatus* Rathbun, male, ventral view  
Fig. 5 *Hexapanopeus cartagoensis* Garth, male holotype, dorsal view  
(p. 454)  
Fig. 6 *Hexapanopeus cartagoensis* Garth, male holotype, ventral view





## PLATE 79

- Fig. 1 *Platypodia gemmata* Rathbun (p. 428)  
Fig. 2 *Actaea dovii* Stimpson, young (p. 431)  
Fig. 3 *Leptodius cooksoni* Miers (p. 448)  
Fig. 4 *Pilumnus xantusii* Stimpson (p. 471)  
Fig. 5 *Cycloxanthops vittatus* (Stimpson) (p. 445)  
Fig. 6 *Actaea dovii* Stimpson, adult (p. 431)