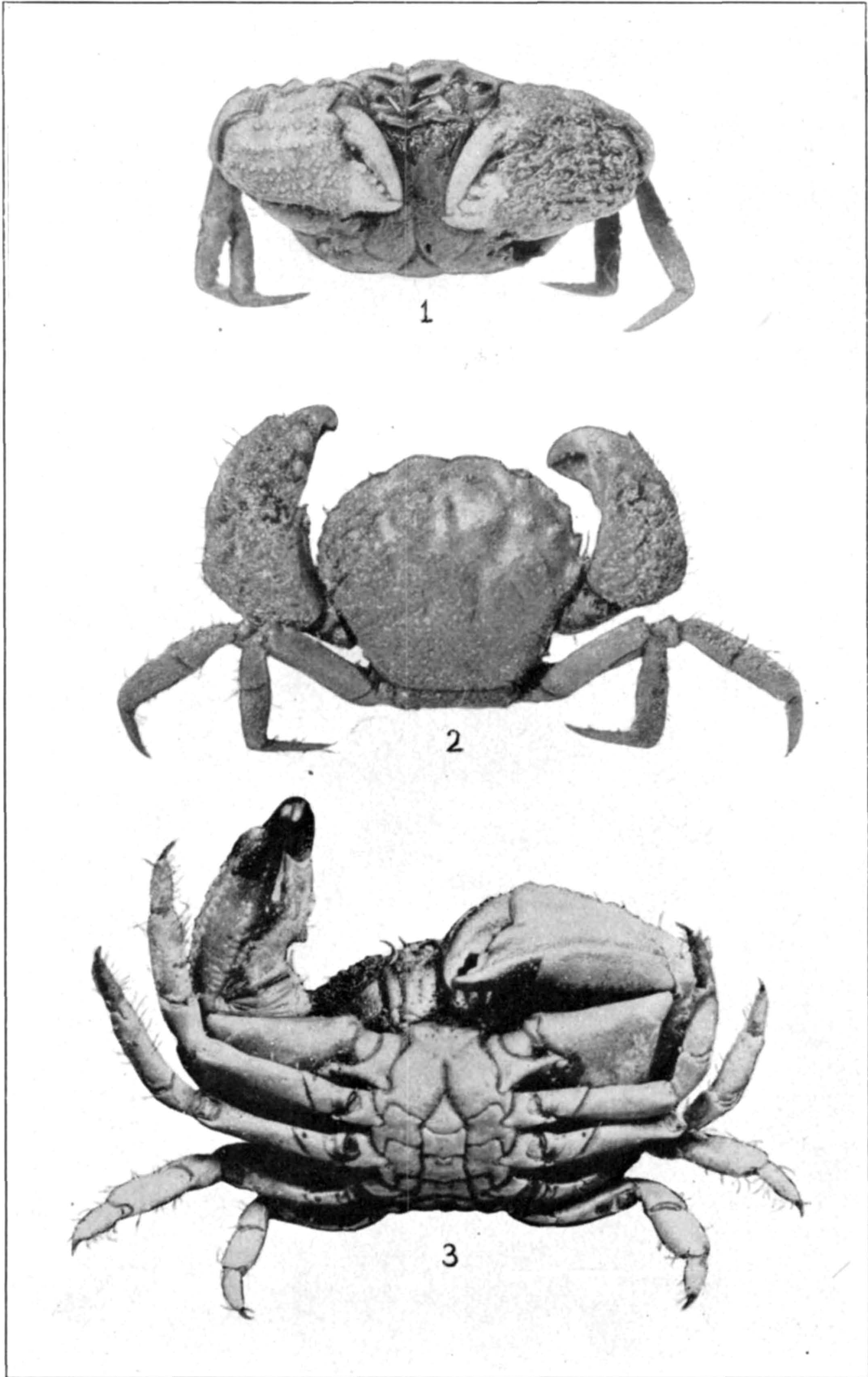


1, 2. *PILUMNOIDES HASSLERI* (P. 537). 3. *P. PERLATUS* (P. 535)

FOR EXPLANATION OF PLATE SEE PAGE 591.

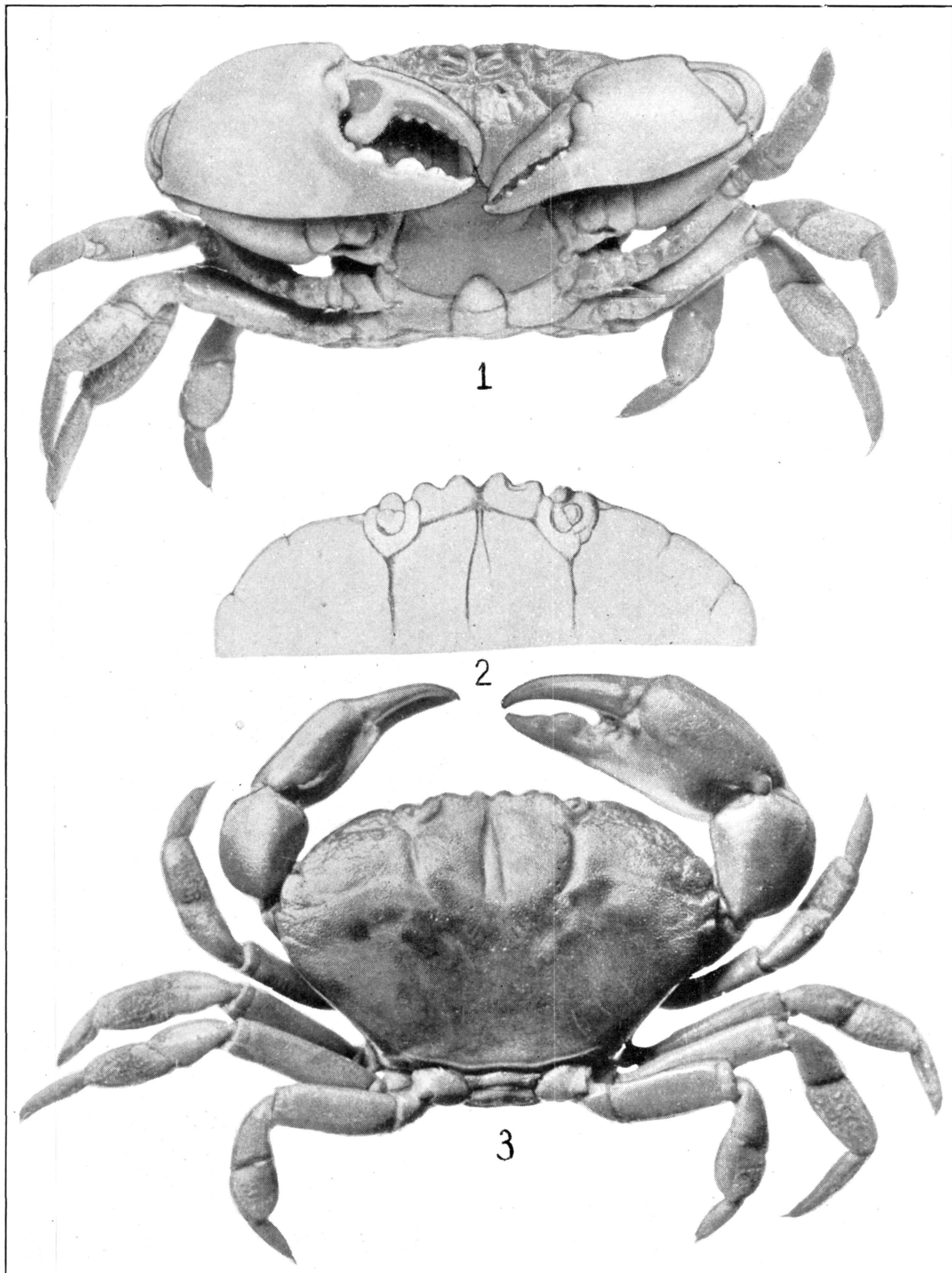




1, 2. PILUMNOIDES NUDIFRONS (P. 538). 3. P. PERLATUS (P. 535)

FOR EXPLANATION OF PLATE SEE PAGE 591.

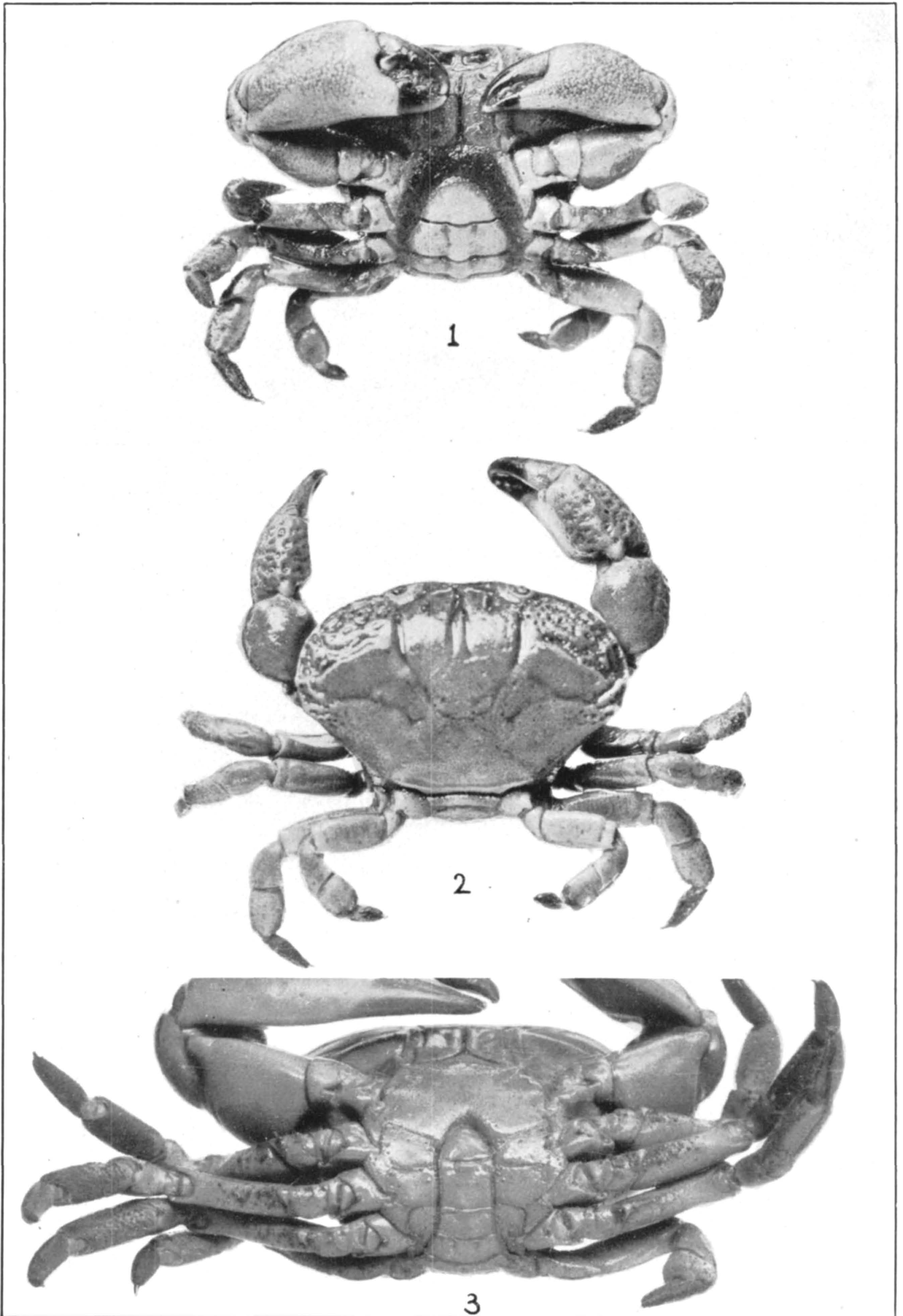




*OZIUS VERREAUXII* (P. 540)

FOR EXPLANATION OF PLATE SEE PAGE 591.

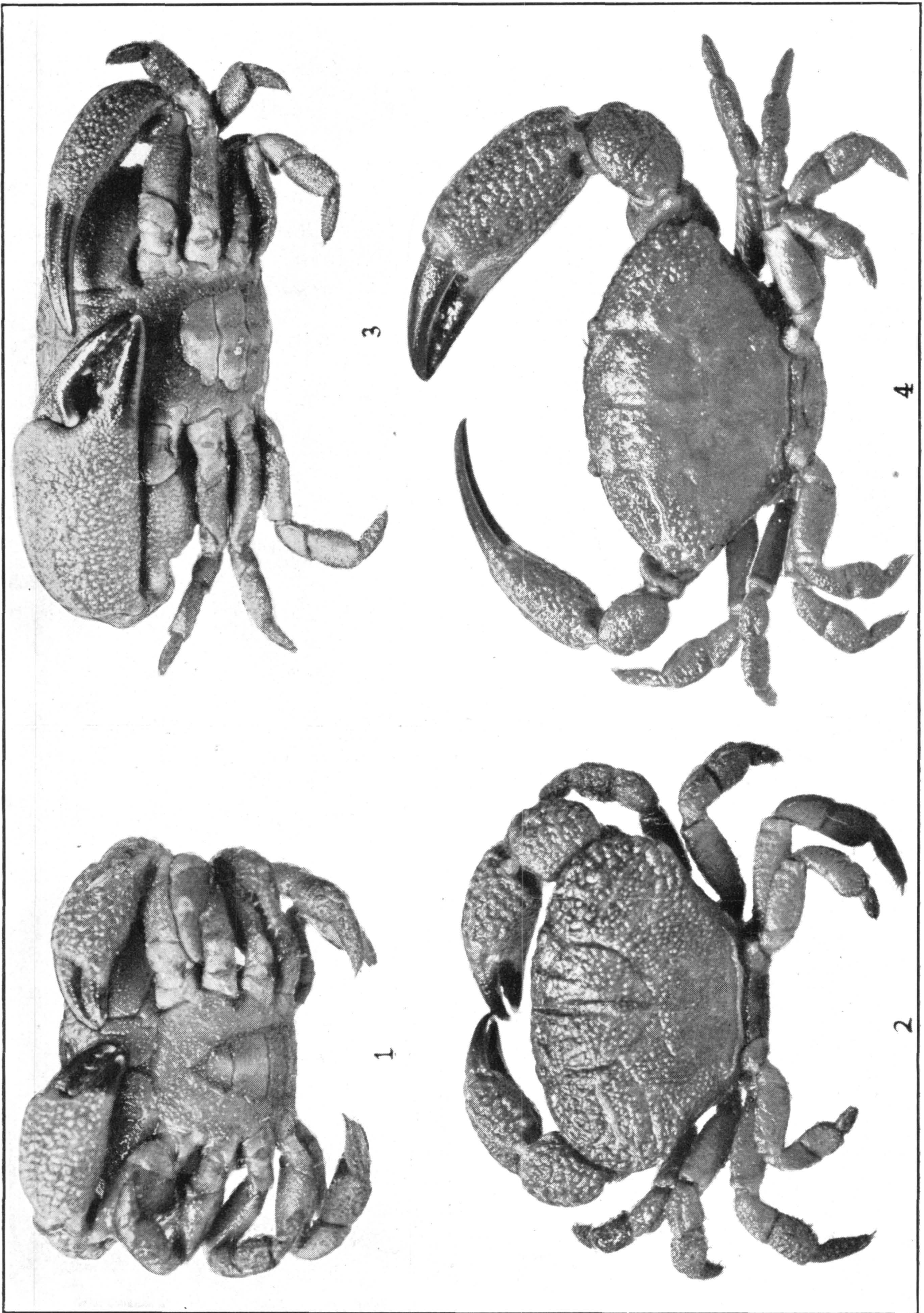




1, 2. *OZIUS RETICULATUS* (P. 542). 3. *O. VERREAUXII* (P. 540)

FOR EXPLANATION OF PLATE SEE PAGE 591.

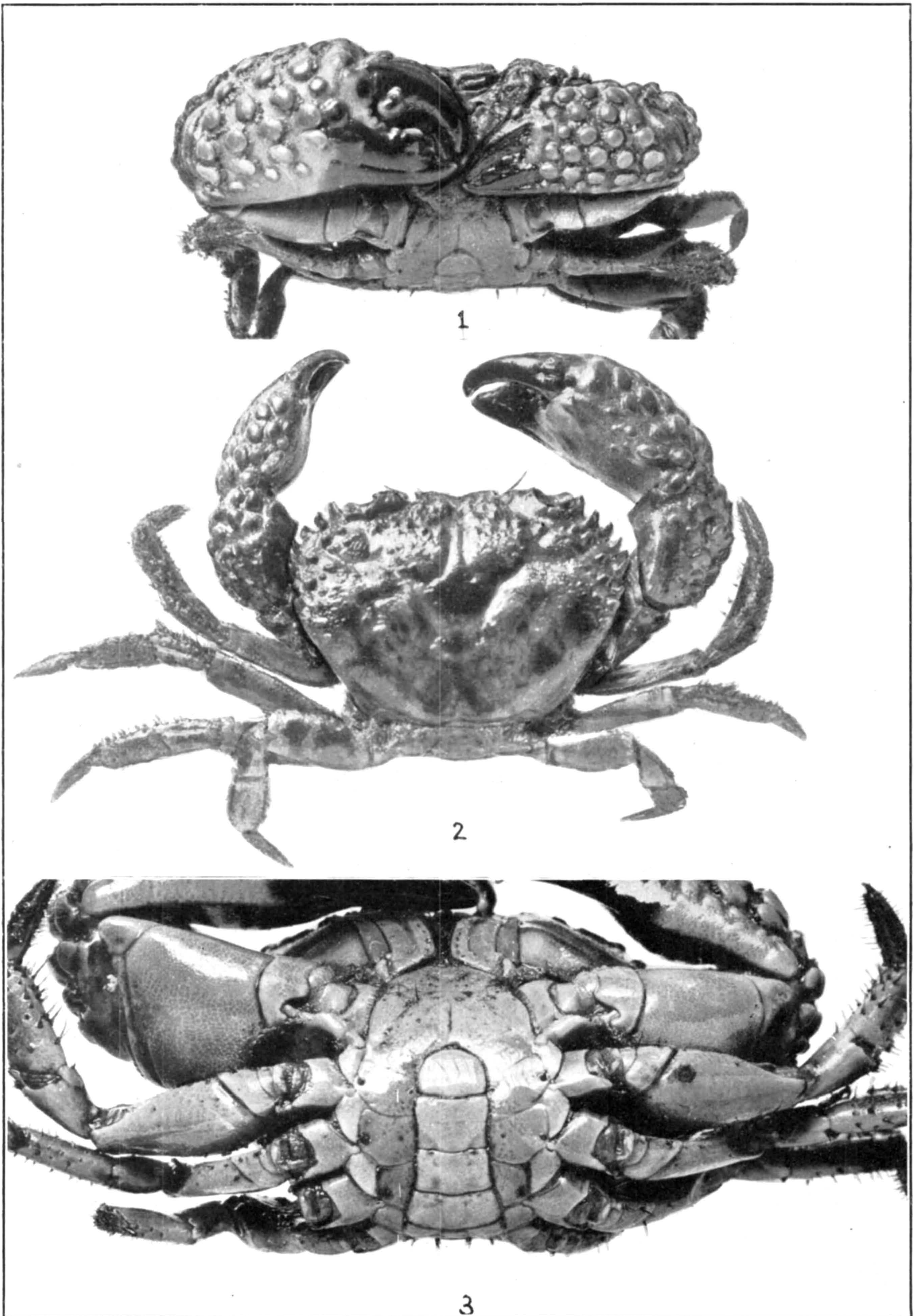




1, 2. OZIUS PERLATUS (P. 543). 3, 4. O. AGASSIZII (P. 544)

FOR EXPLANATION OF PLATE SEE PAGE 592.

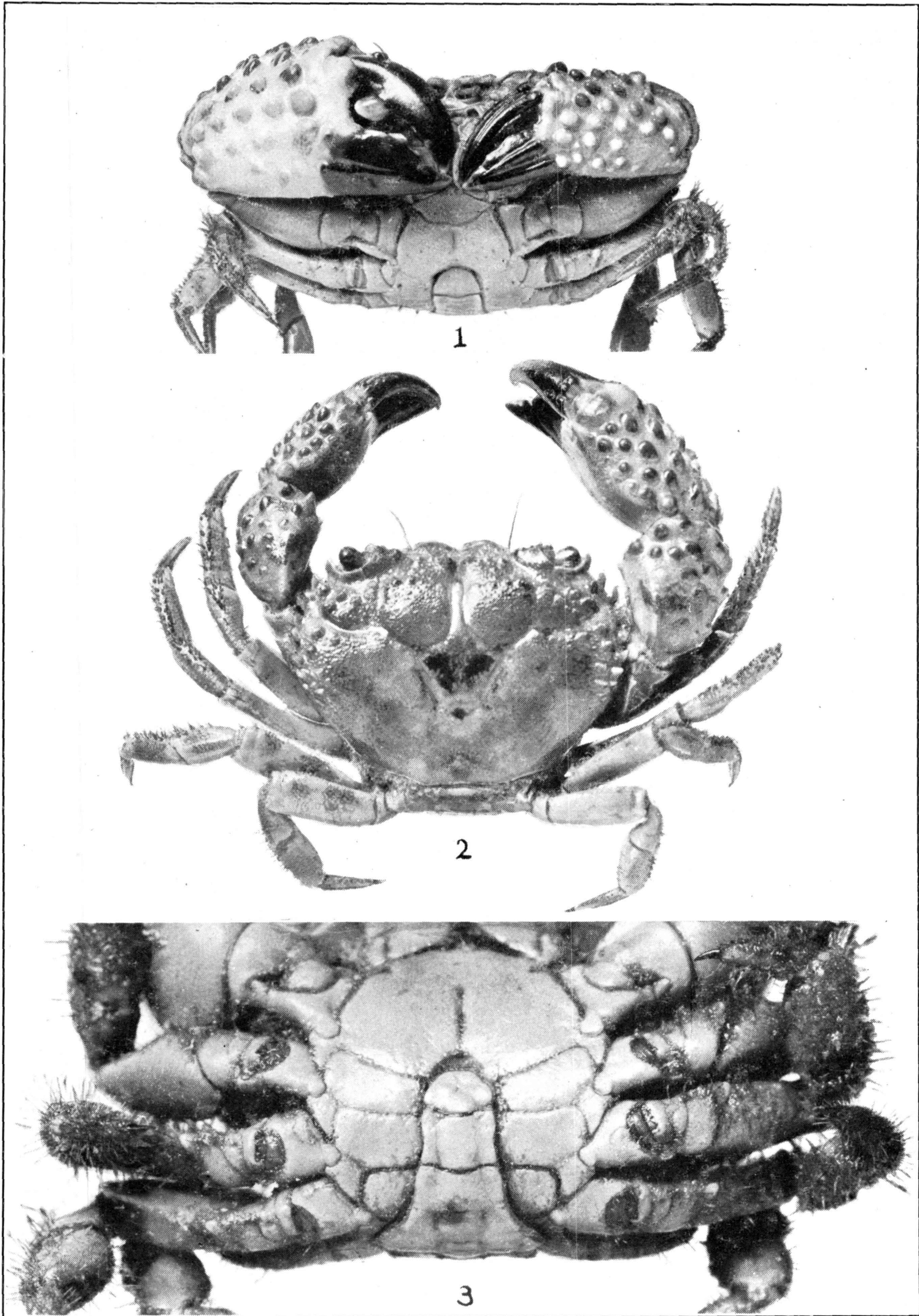




*ERIPHIA GONAGRA* (P. 545)

FOR EXPLANATION OF PLATE SEE PAGE 592.

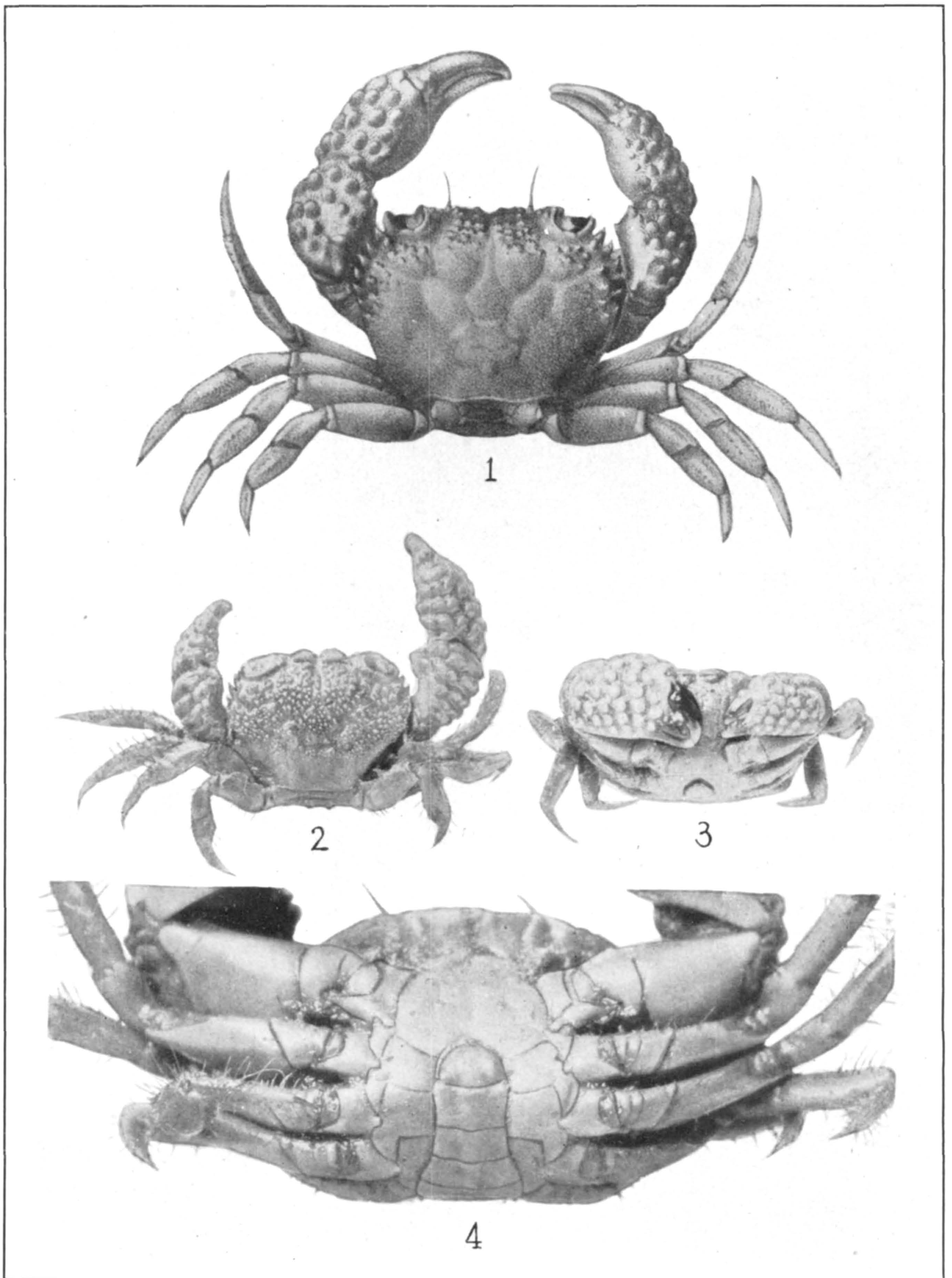




*ERIPHIA SQUAMATA* (P. 550)

FOR EXPLANATION OF PLATE SEE PAGE 592.





1. ERIPHIA SQUAMATA (P. 550). 2-4. E. GRANULOSA (P. 551)

FOR EXPLANATION OF PLATE SEE PAGE 592.

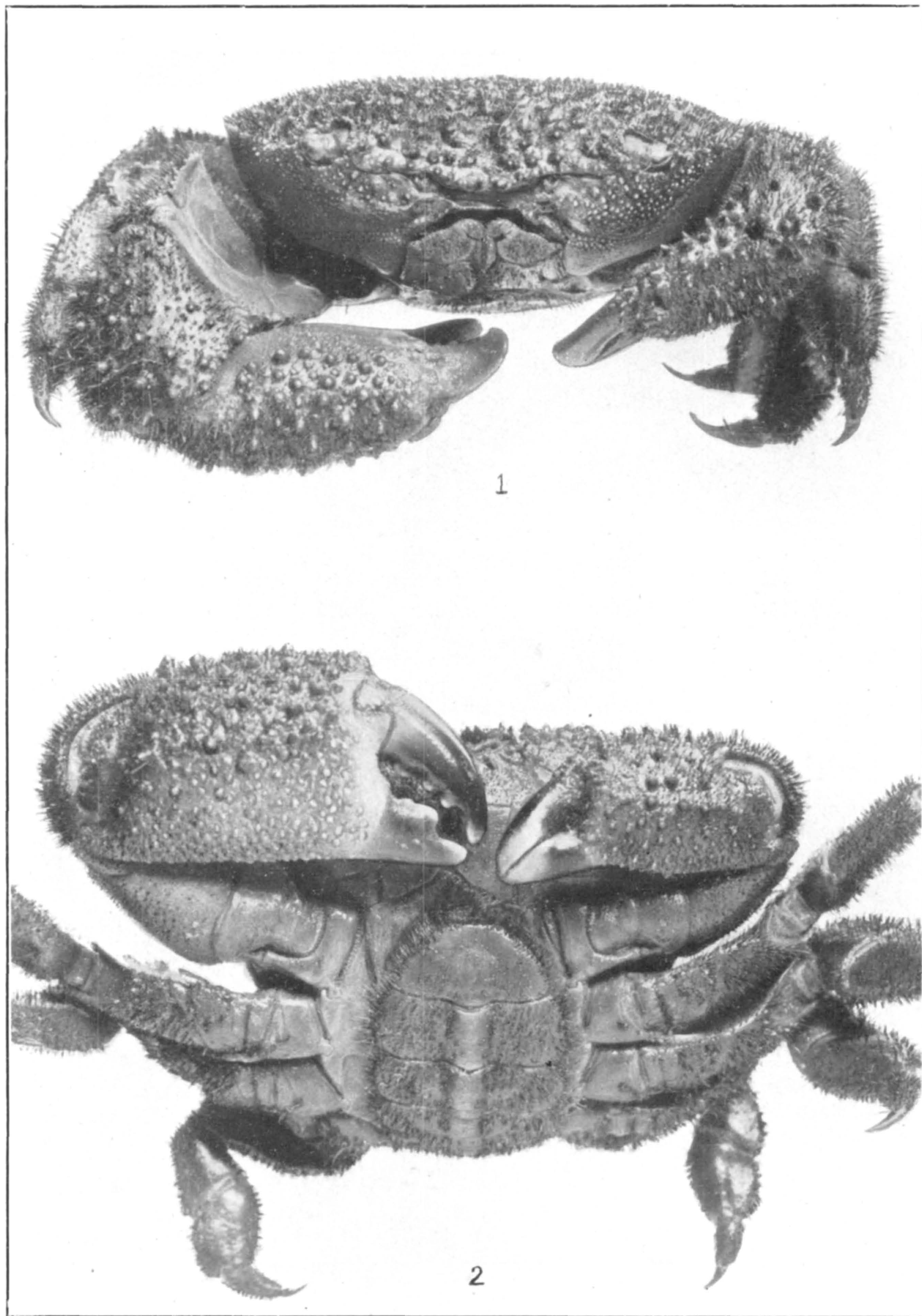




*ERIPHIDES HISPIDA* (P. 552)

FOR EXPLANATION OF PLATE SEE PAGE 592.

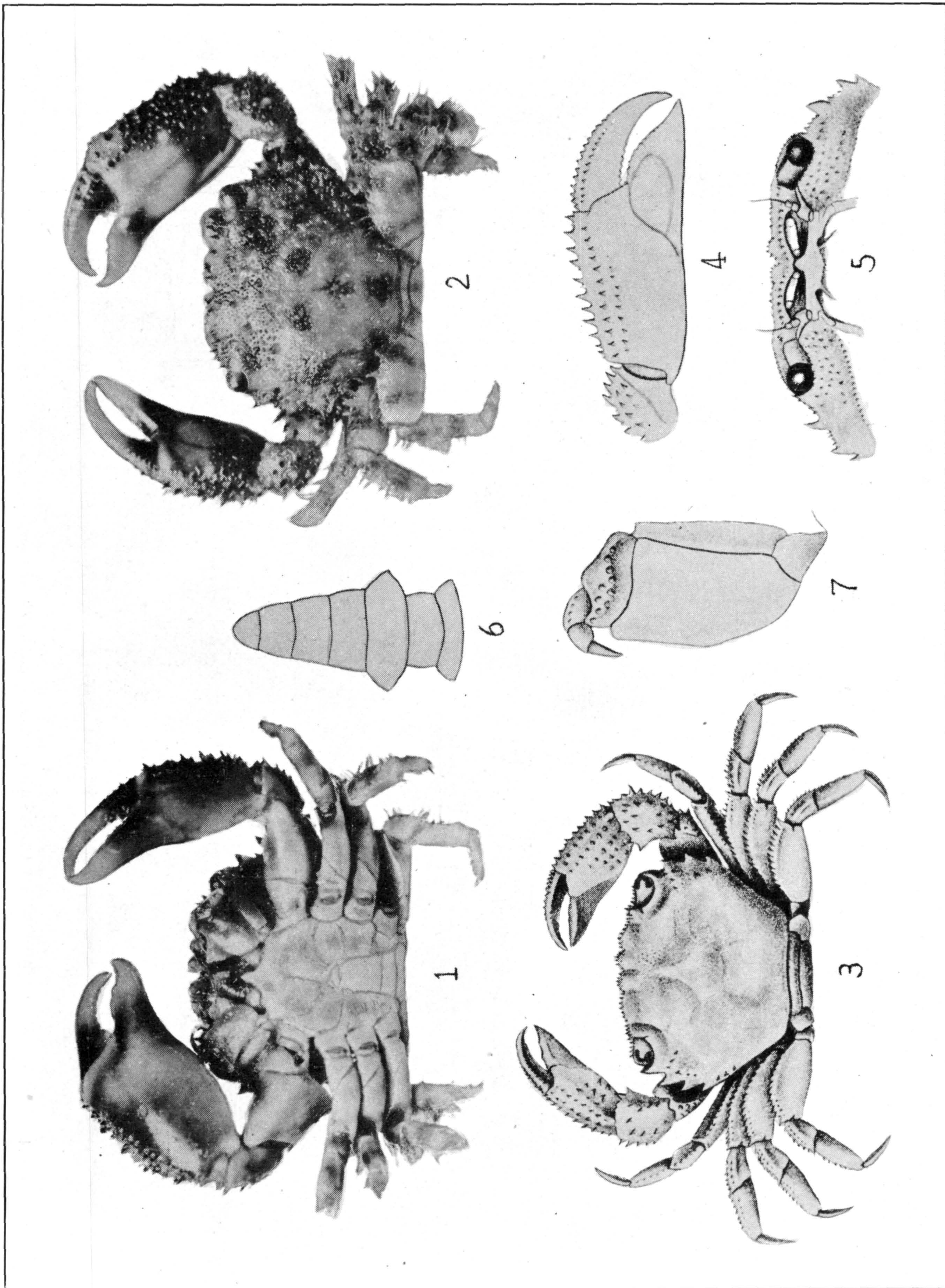




ERIPHIDES HISPIDA (P. 552)

FOR EXPLANATION OF PLATE SEE PAGE 592.

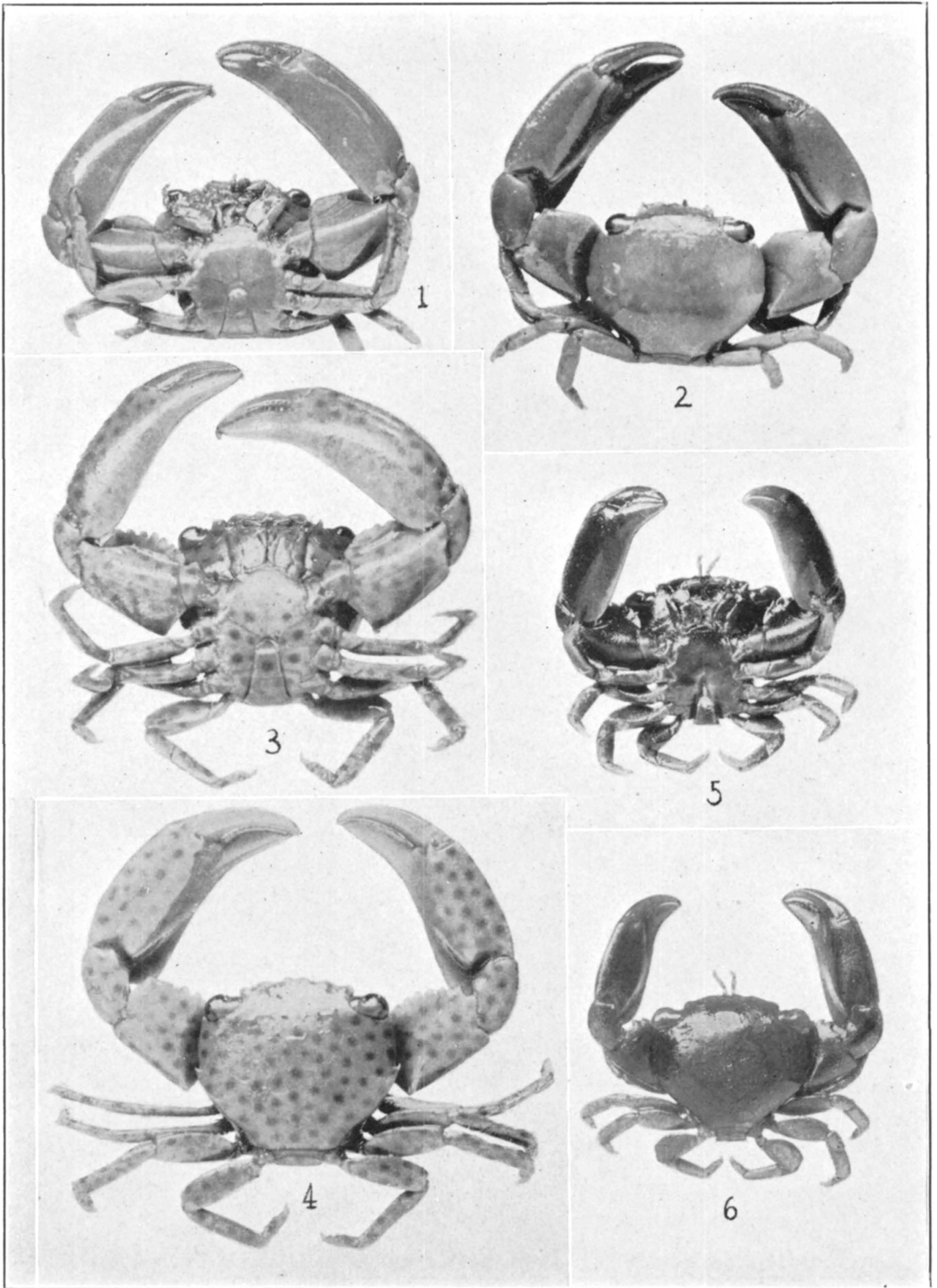




*DOMECIA HISPIDA* (P. 554)

FOR EXPLANATION OF PLATE SEE PAGE 592.

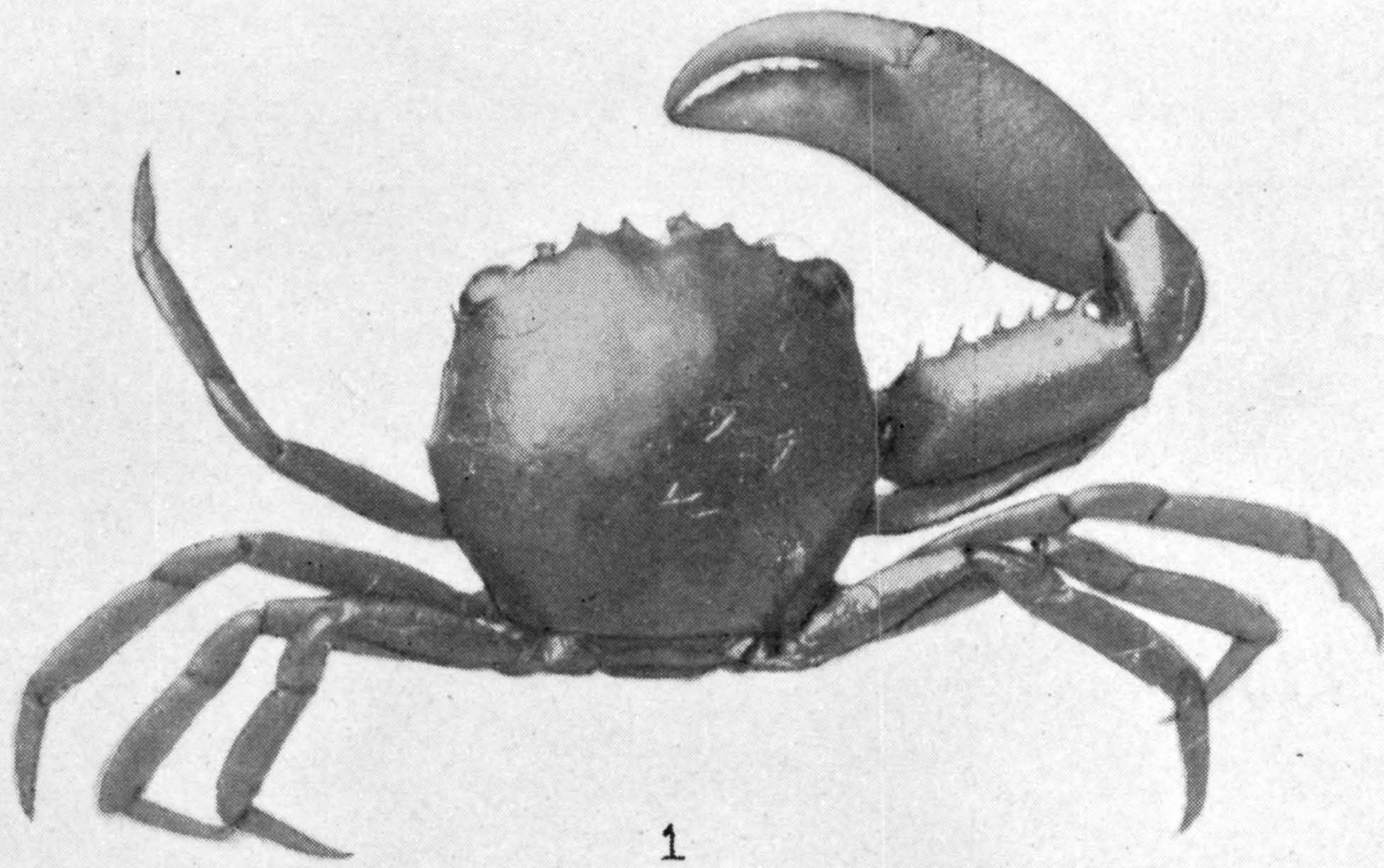




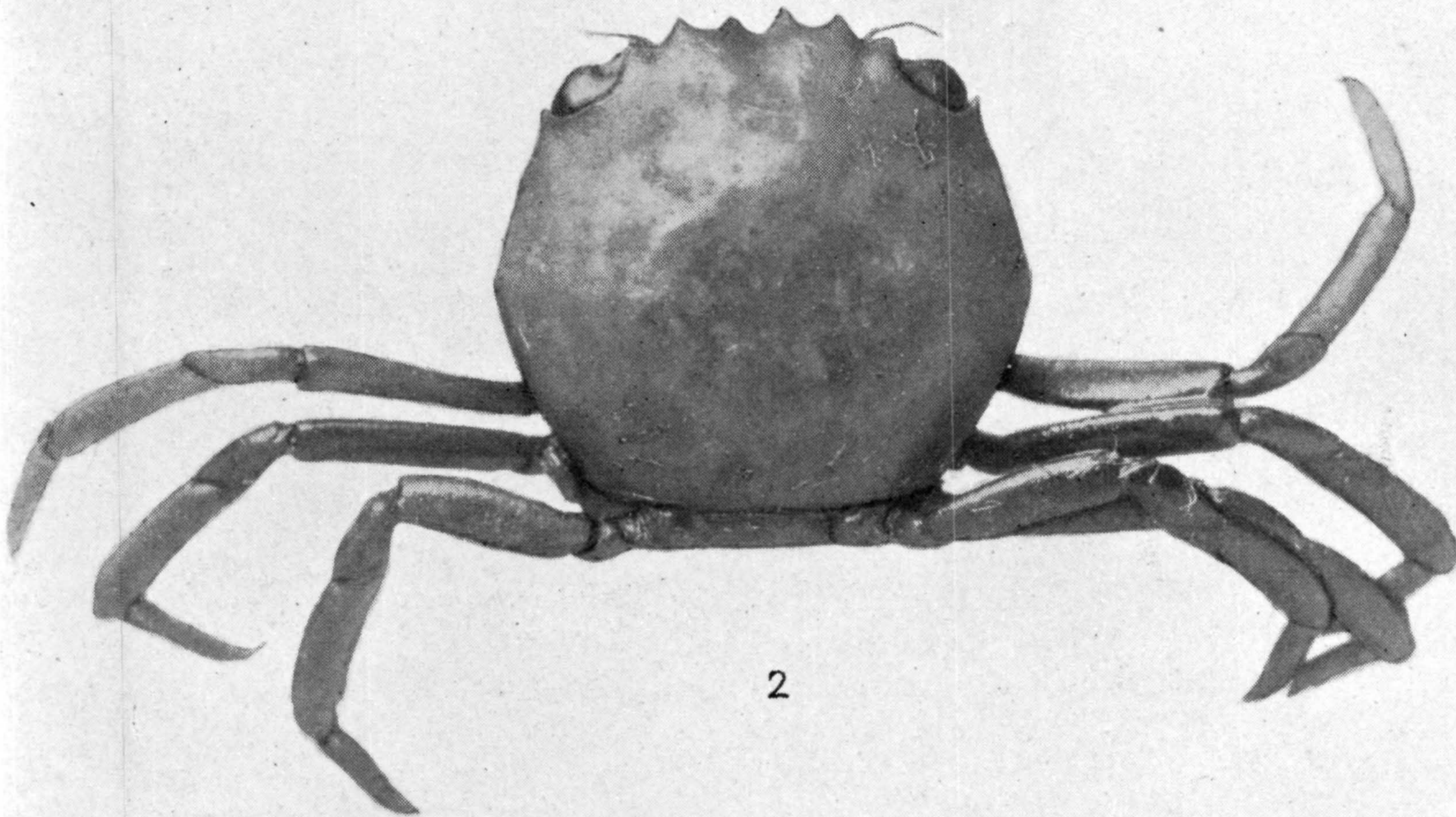
1, 2. *TRAPEZIA CYMODOCE FERRUGINEA* (P. 557). 3, 4. *T. C. MACULATA* (P. 558). 5, 6. *T. DIGITALIS* (P. 559)

FOR EXPLANATION OF PLATE SEE PAGE 592.

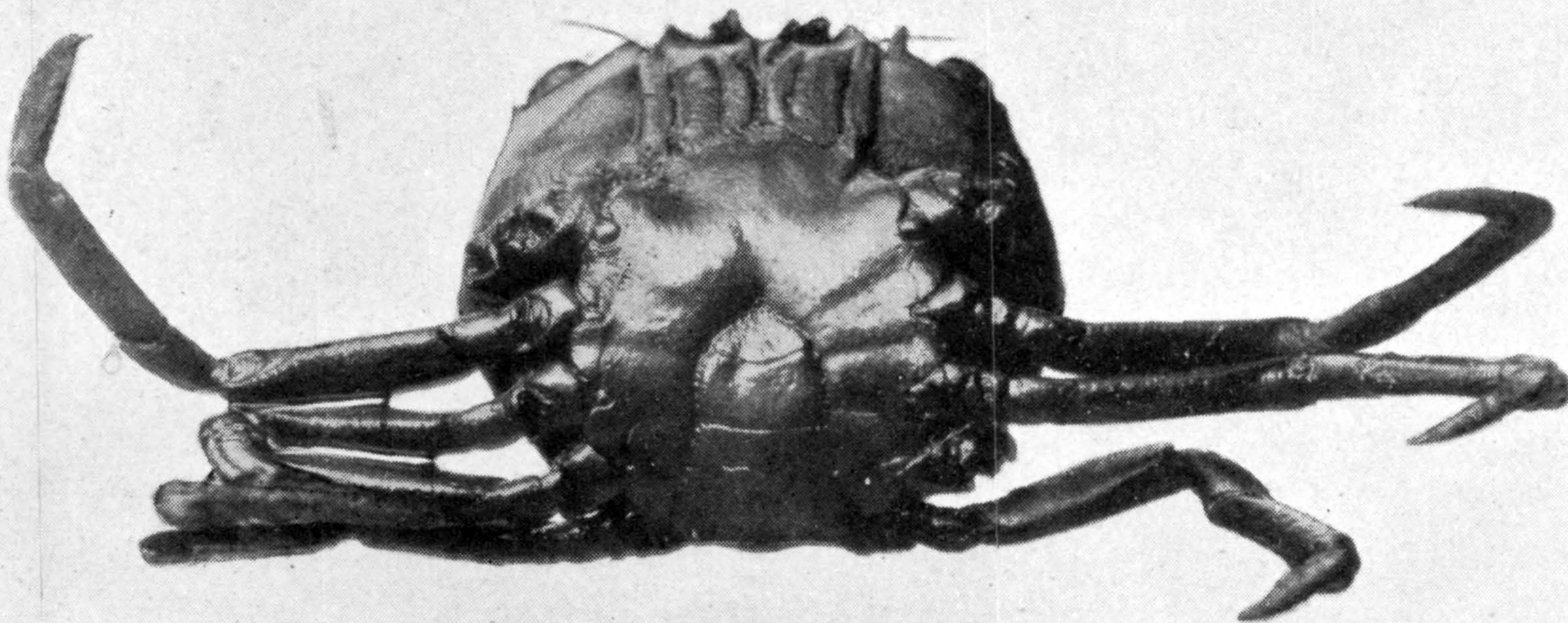




1



2

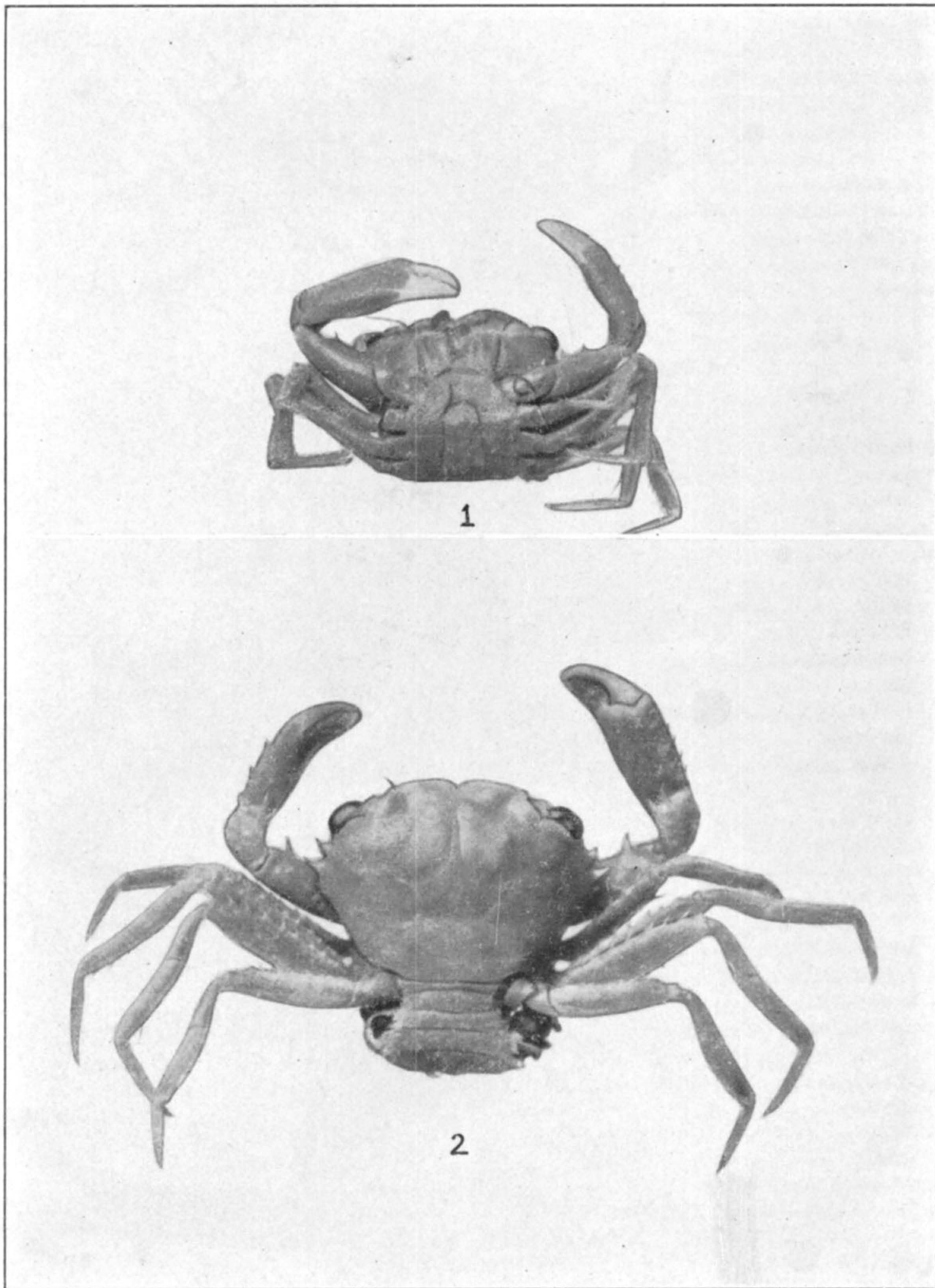


3

*QUADRELLA NITIDA* (P. 561)

FOR EXPLANATION OF PLATE SEE PAGE 593.





*MELYBIA THALAMITA* (P. 562)

FOR EXPLANATION OF PLATE SEE PAGE 593.