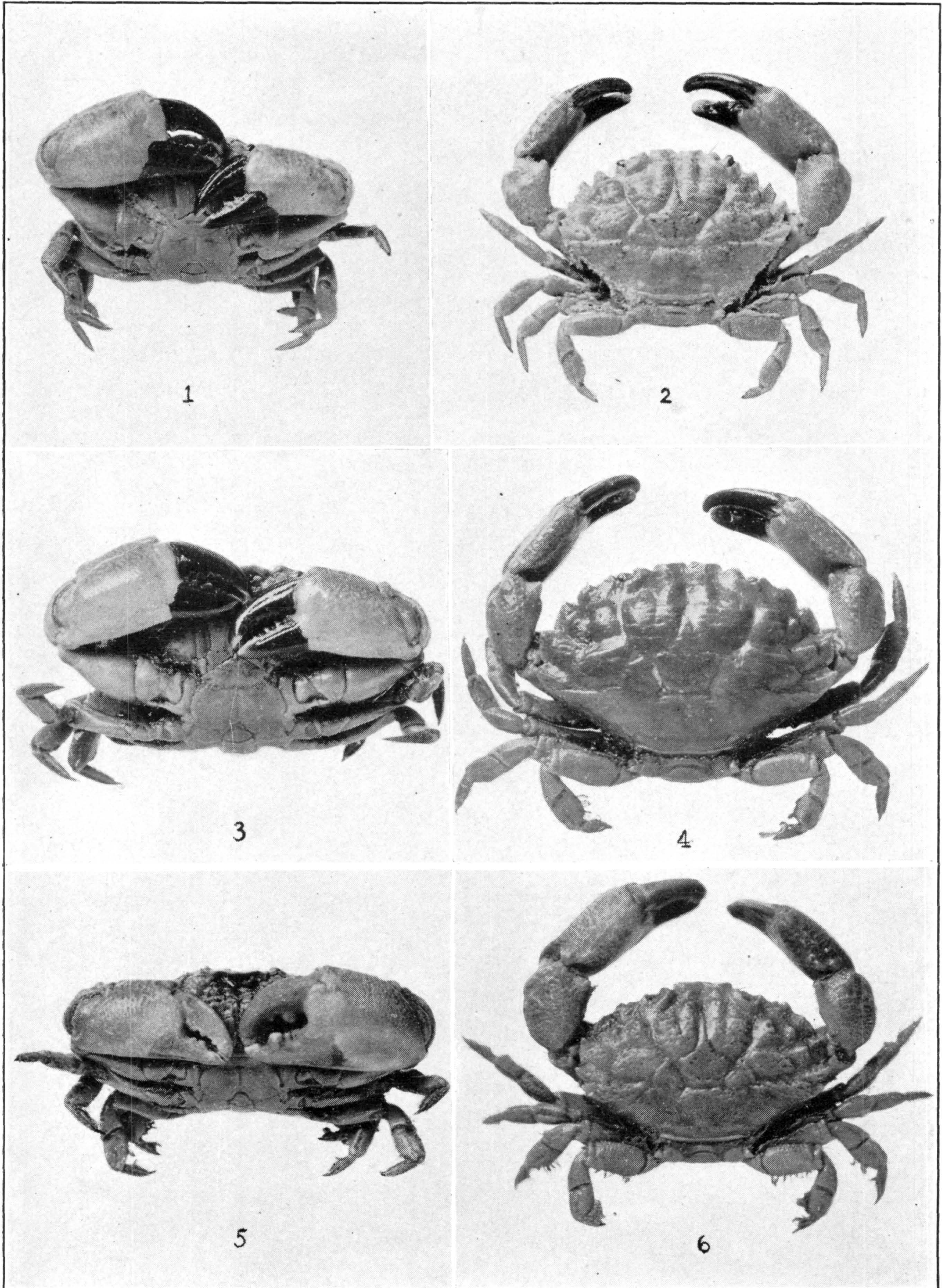


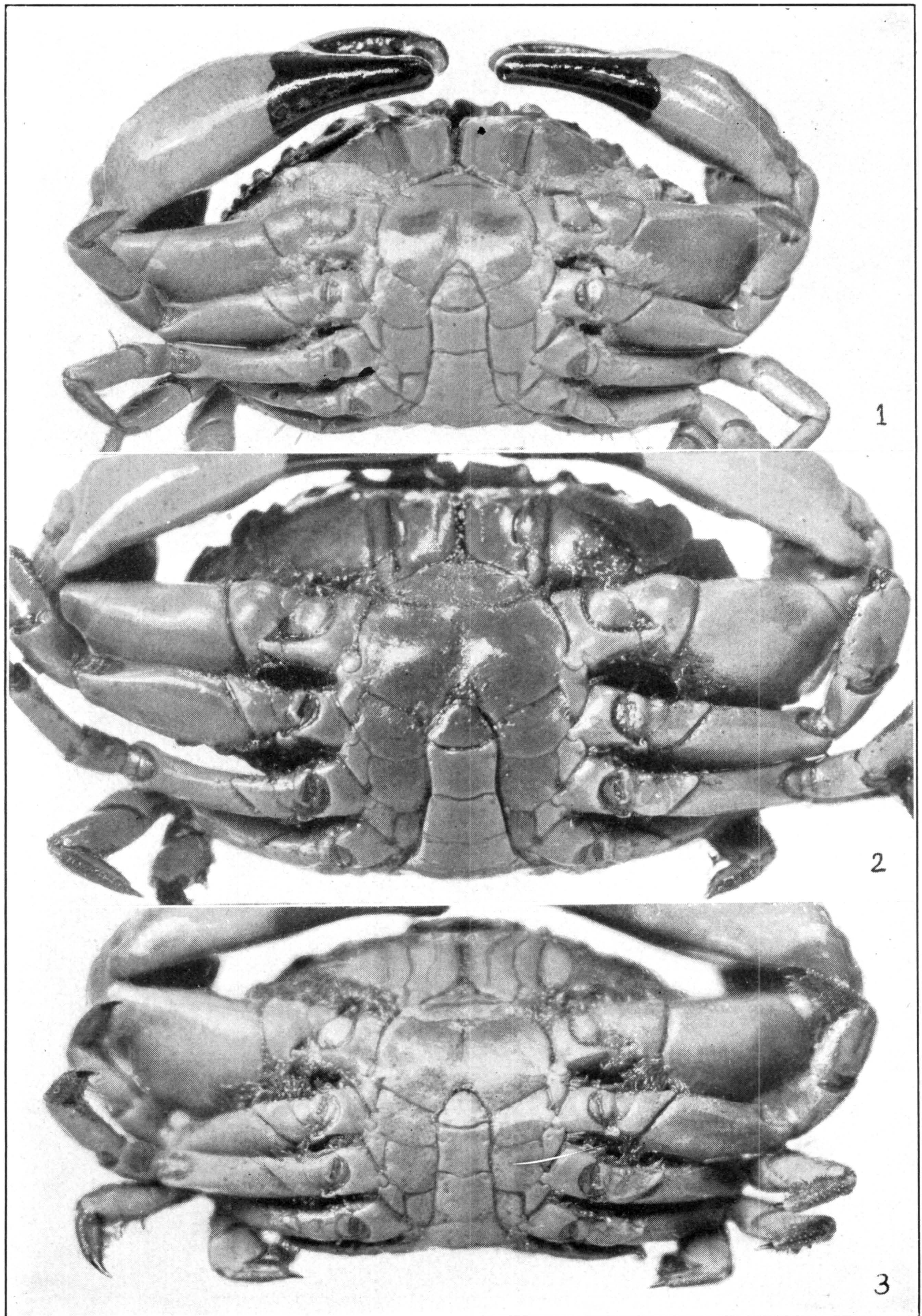
*PHYMODIUS MACULATUS* (P. 295)

FOR EXPLANATION OF PLATE SEE PAGE 578.



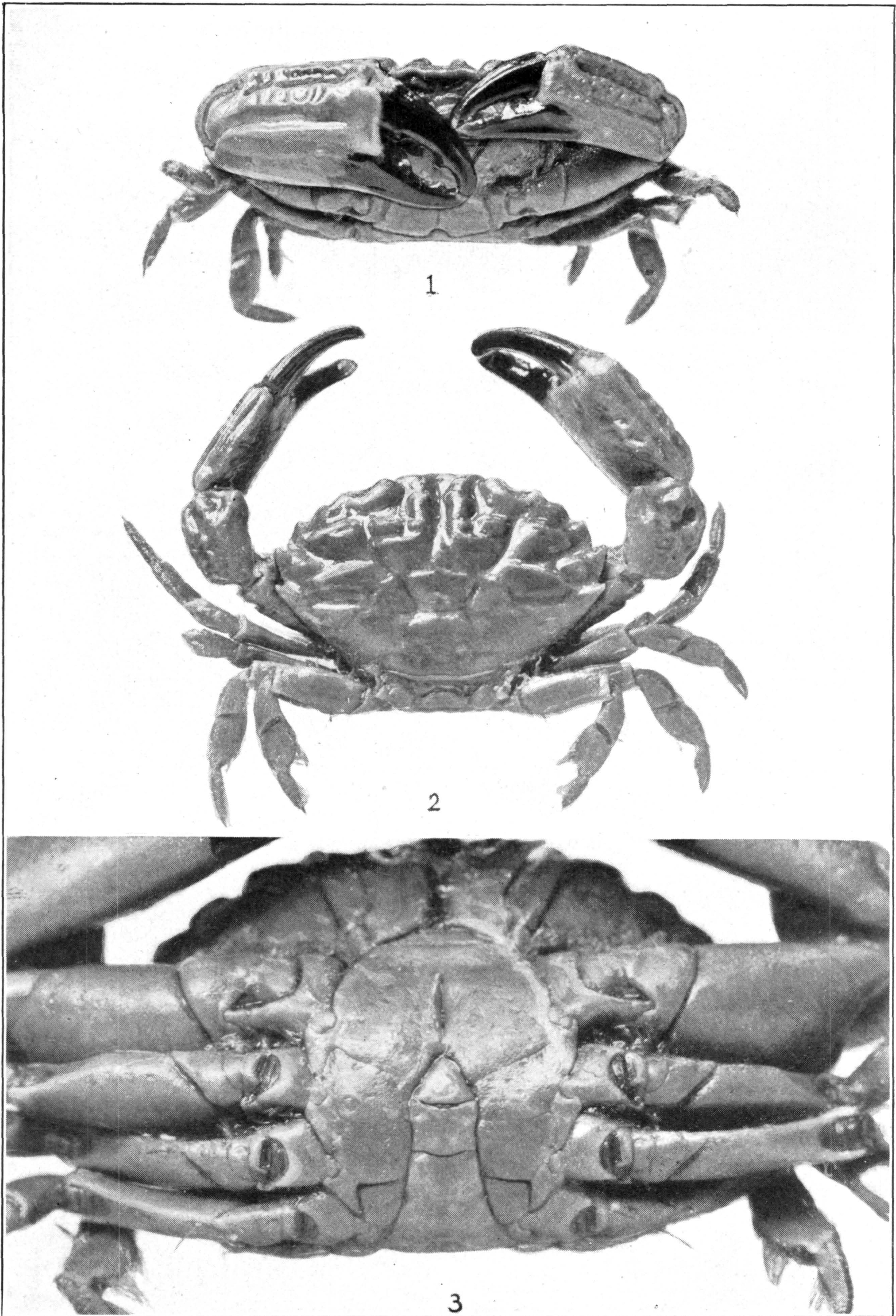
1, 2. LEPTODIUS FLORIDANUS (P. 297). 3, 4. L. OCCIDENTALIS (P. 301). 5, 6. L. SANGUINEUS (P. 302)

FOR EXPLANATION OF PLATE SEE PAGE 579.



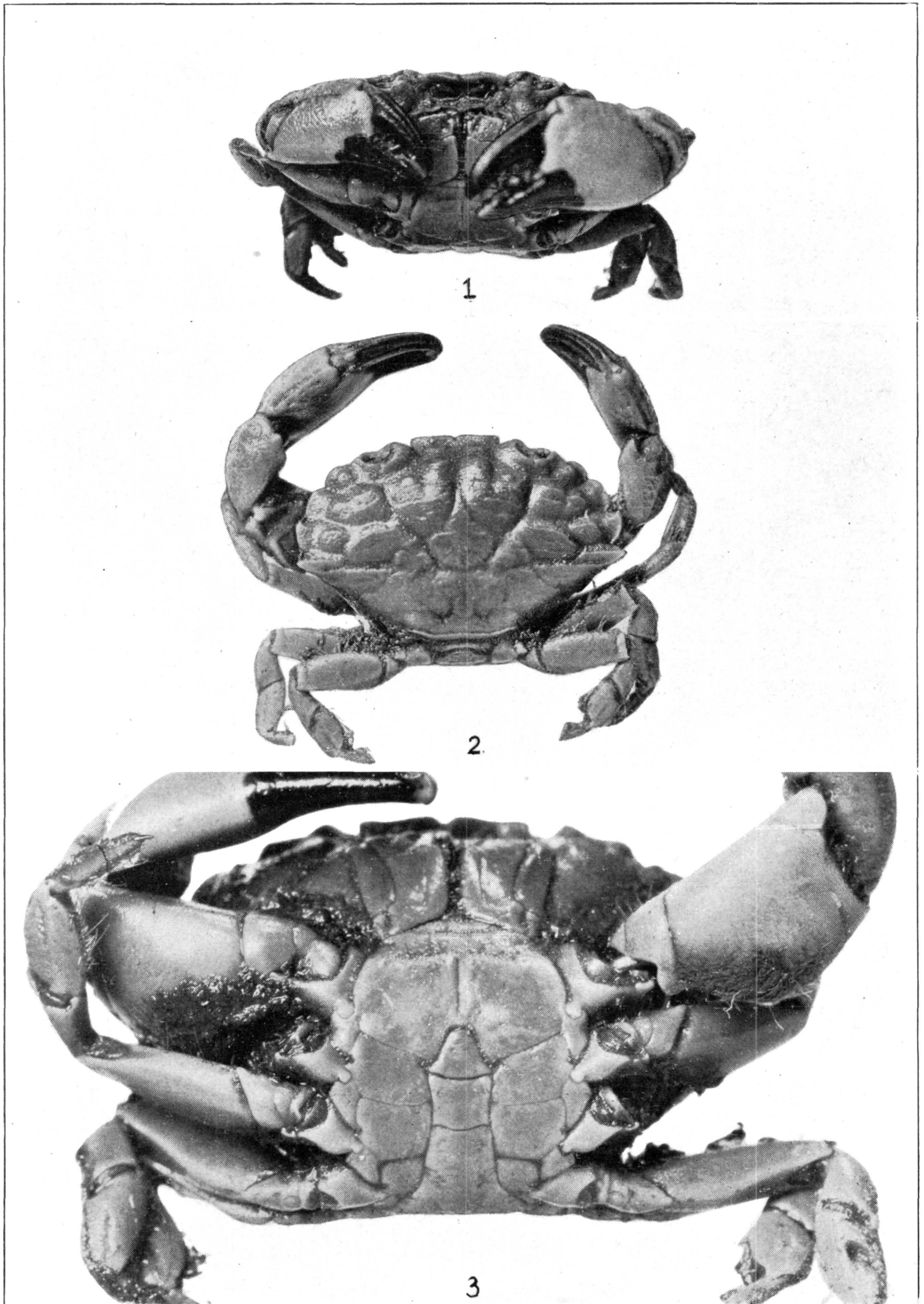
1. LEPTODIUS FLORIDANUS (P. 297). 2. L. OCCIDENTALIS (P. 301). 3. L. SANGUINEUS (P. 302)

FOR EXPLANATION OF PLATE SEE PAGE 579.



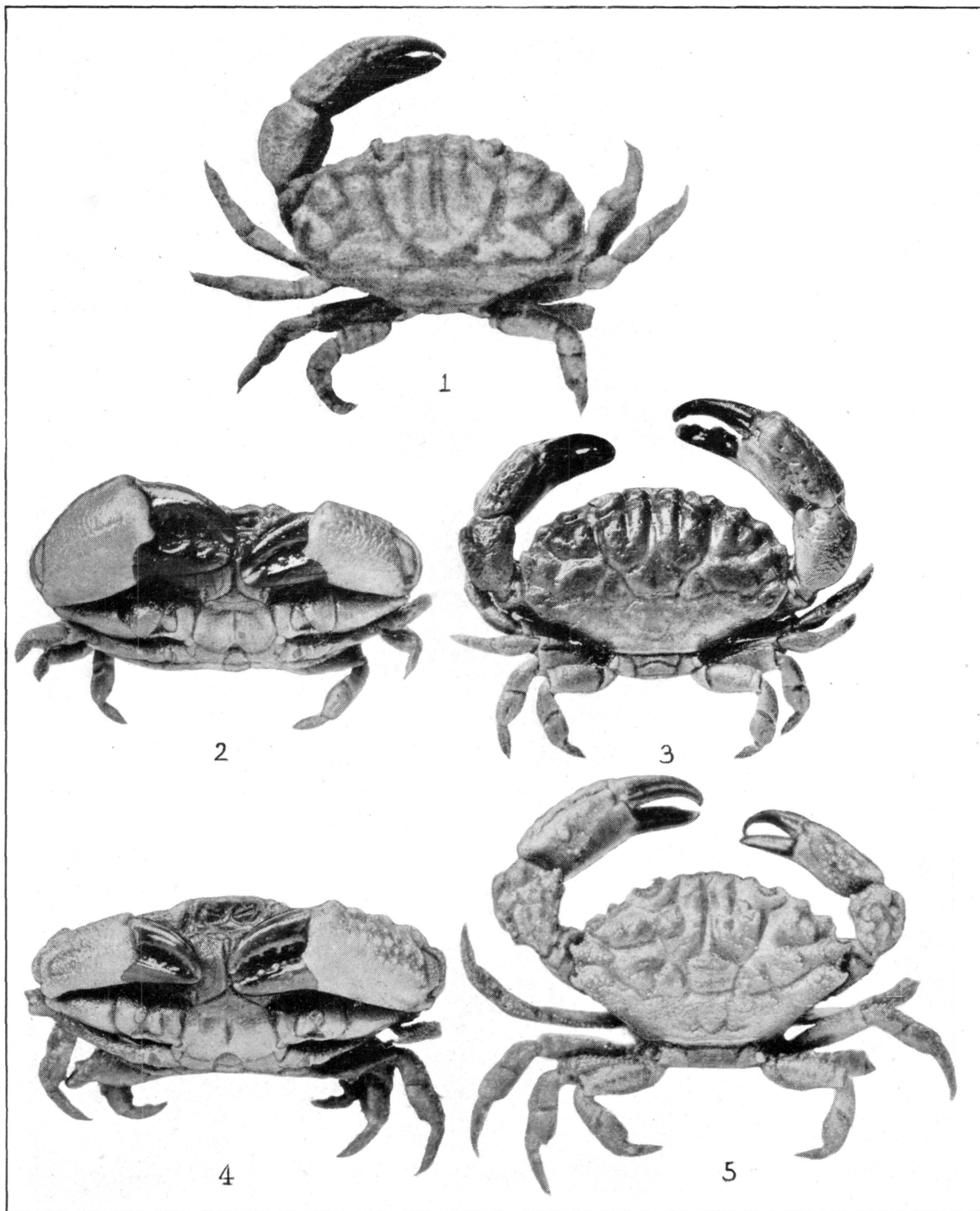
*LEPTODIUS SNODGRASSI* (P. 303)

FOR EXPLANATION OF PLATE SEE PAGE 579.



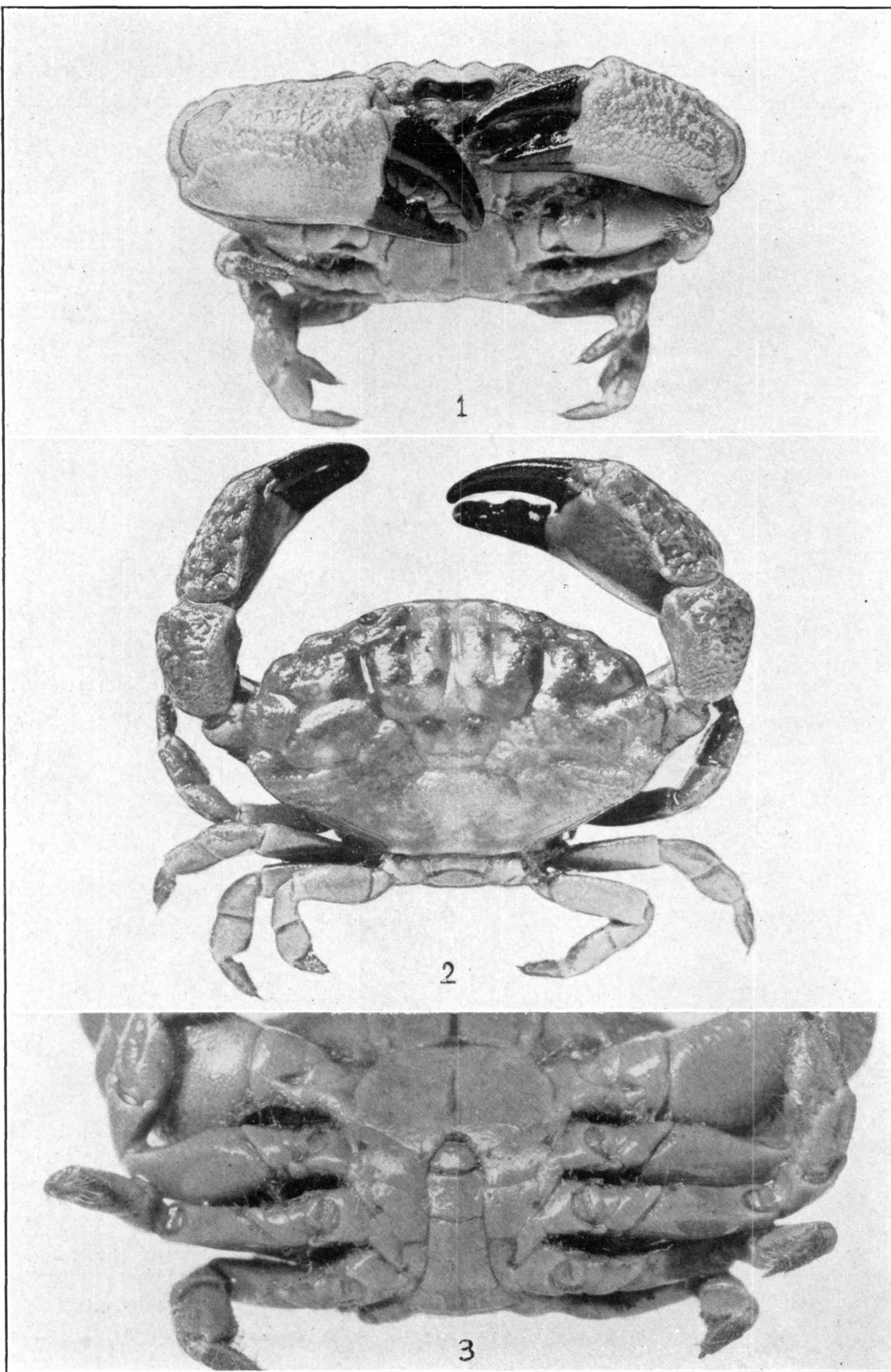
LEPTODIUS TABOGANUS (P. 304)

FOR EXPLANATION OF PLATE SEE PAGE 579.



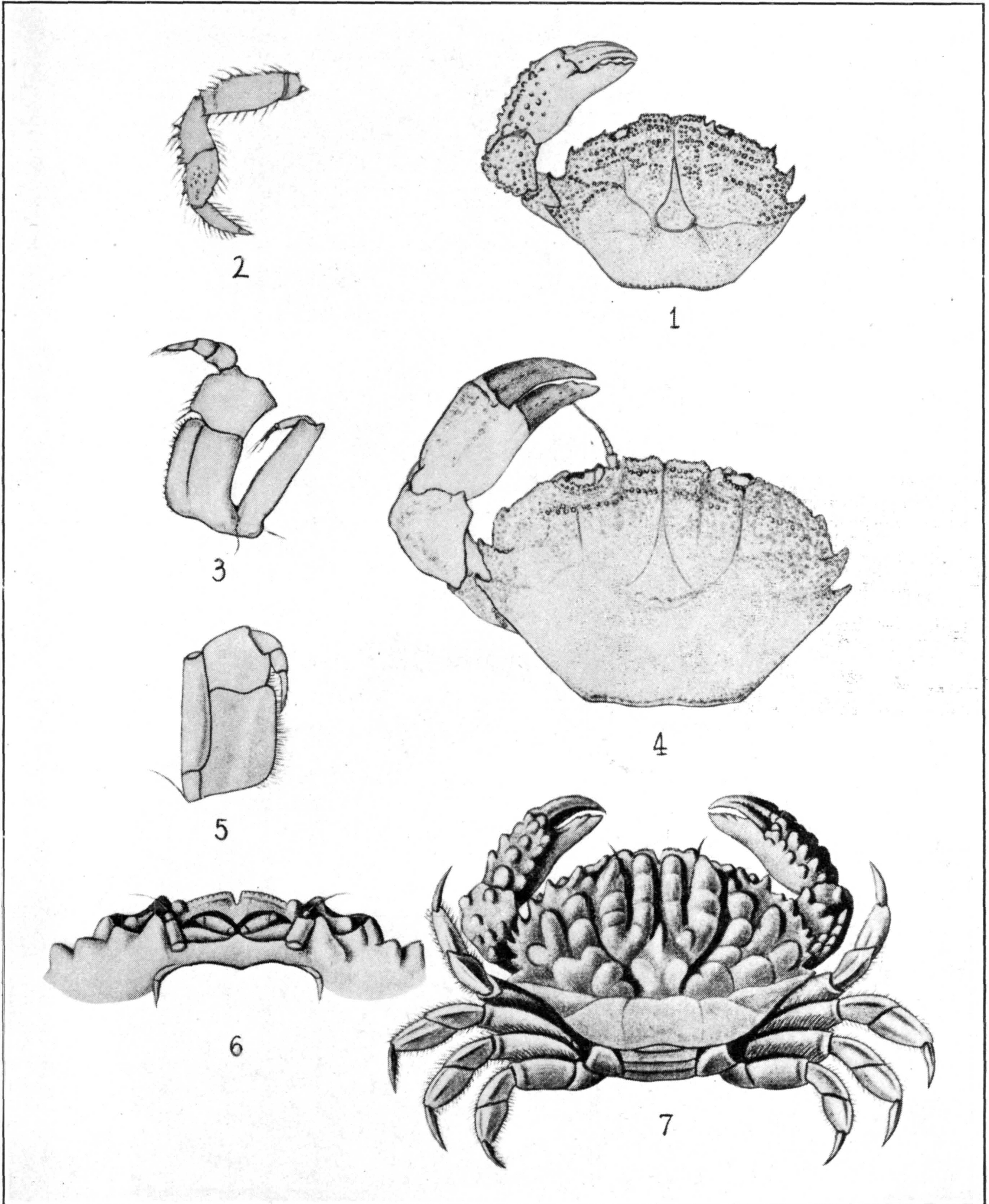
1-3. LEPTODIUS PARVULUS (P. 305). 4, 5. L. AGASSIZII (P. 307)

FOR EXPLANATION OF PLATE SEE PAGE 579.



LEPTODIUS COOKSONI (P. 310)

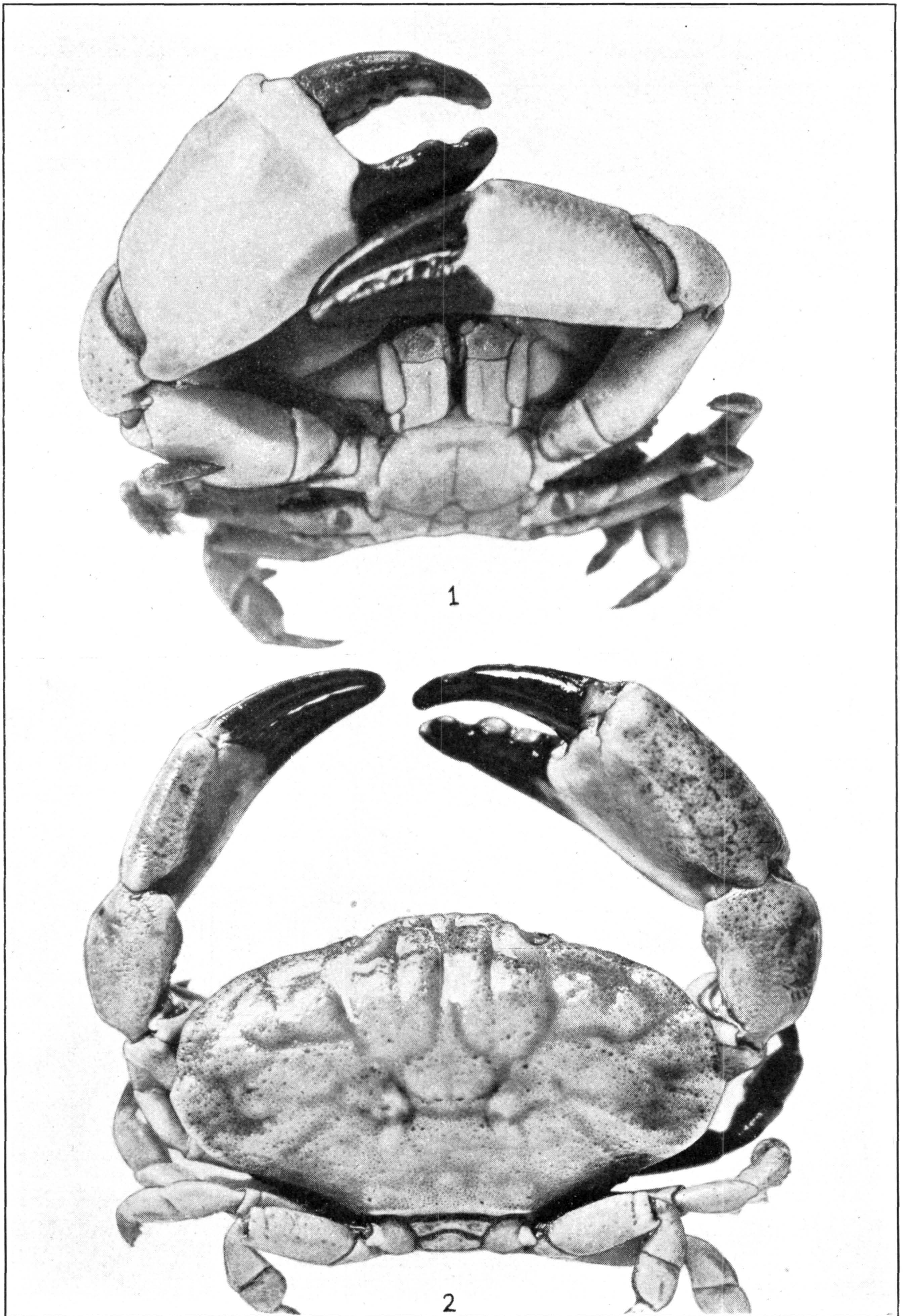
FOR EXPLANATION OF PLATE SEE PAGE 579.



1-4. LEPTODIUS TRIDENTATUS (P. 308). 5-7. XANTHODIUS STIMPSONI (P. 315)

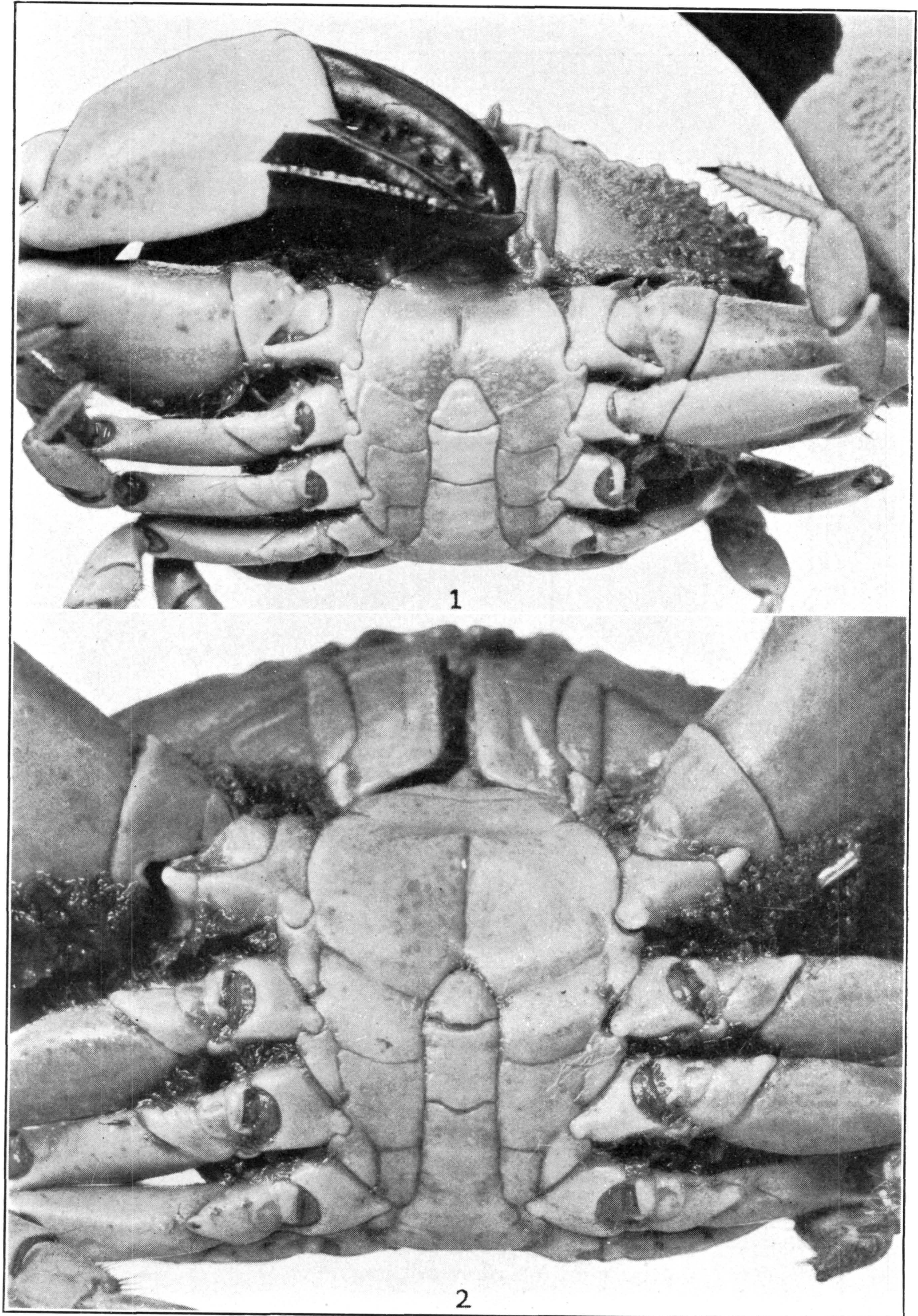
FOR EXPLANATION OF PLATE SEE PAGES 579-580.





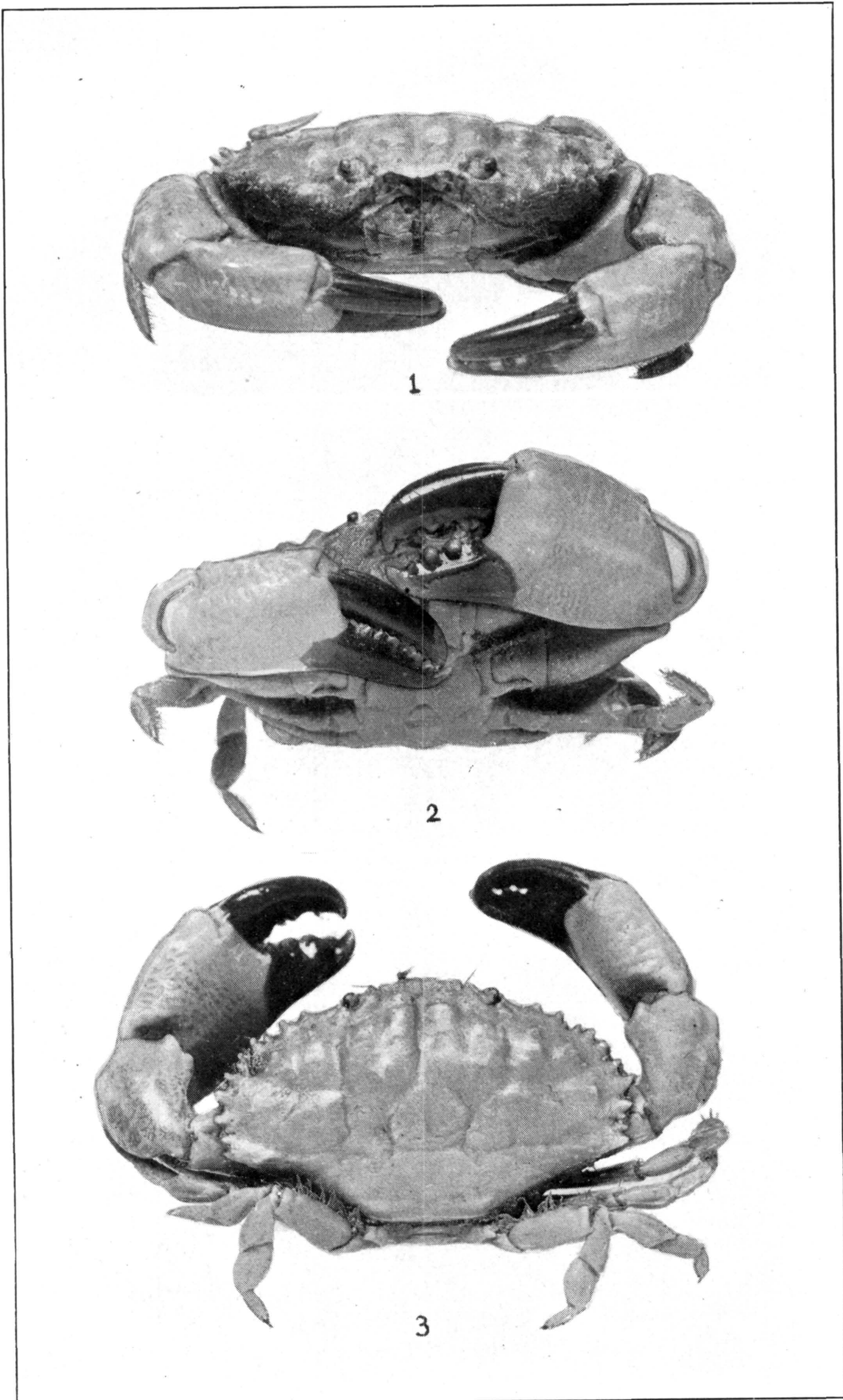
XANTHODIUS STERNBERGHII (P. 311)

FOR EXPLANATION OF PLATE SEE PAGE 580.



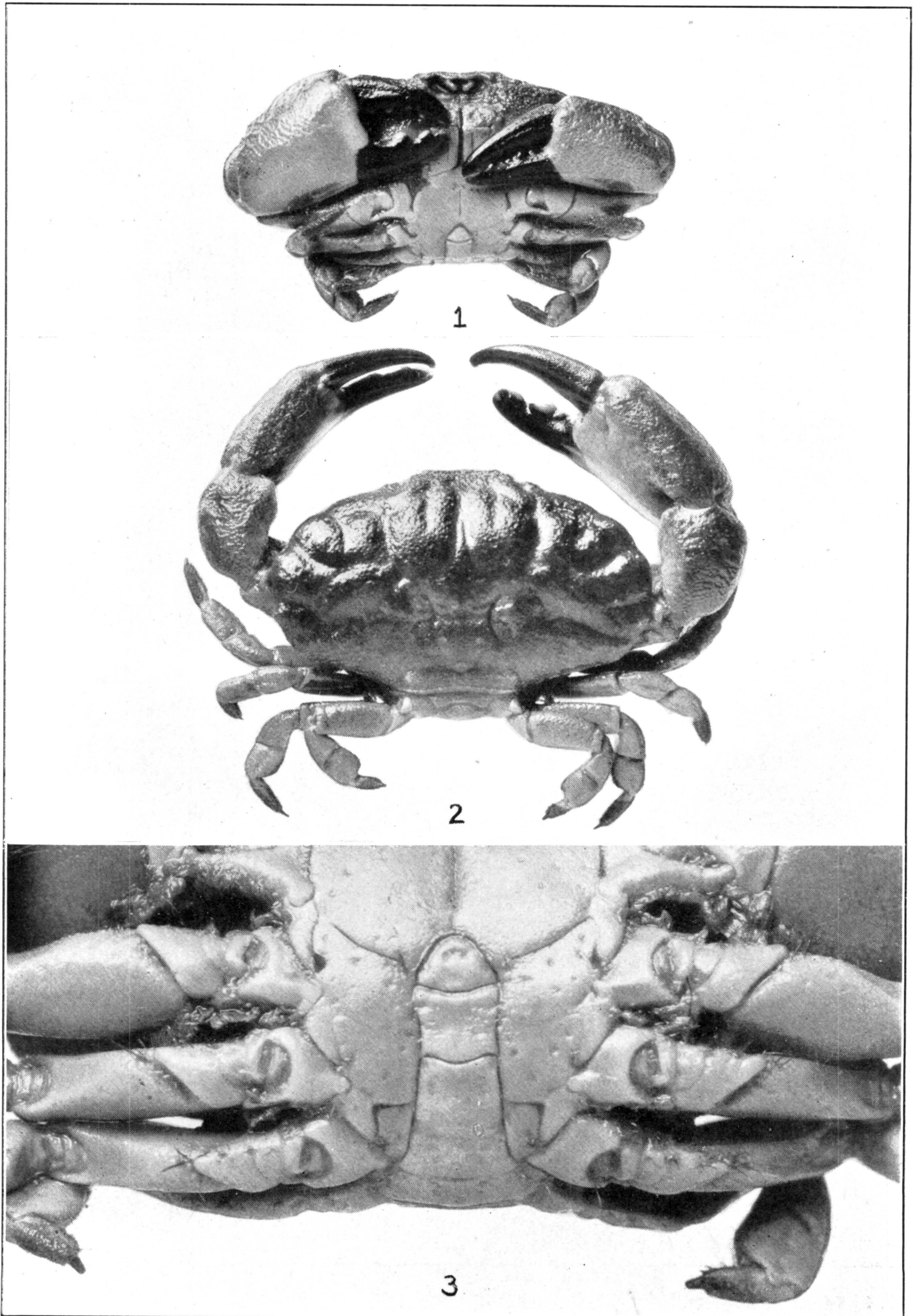
1. XANTHODIUS DENTICULATUS (P. 314). 2. X. STERNBERGHII (P. 311)

FOR EXPLANATION OF PLATE SEE PAGE 580.



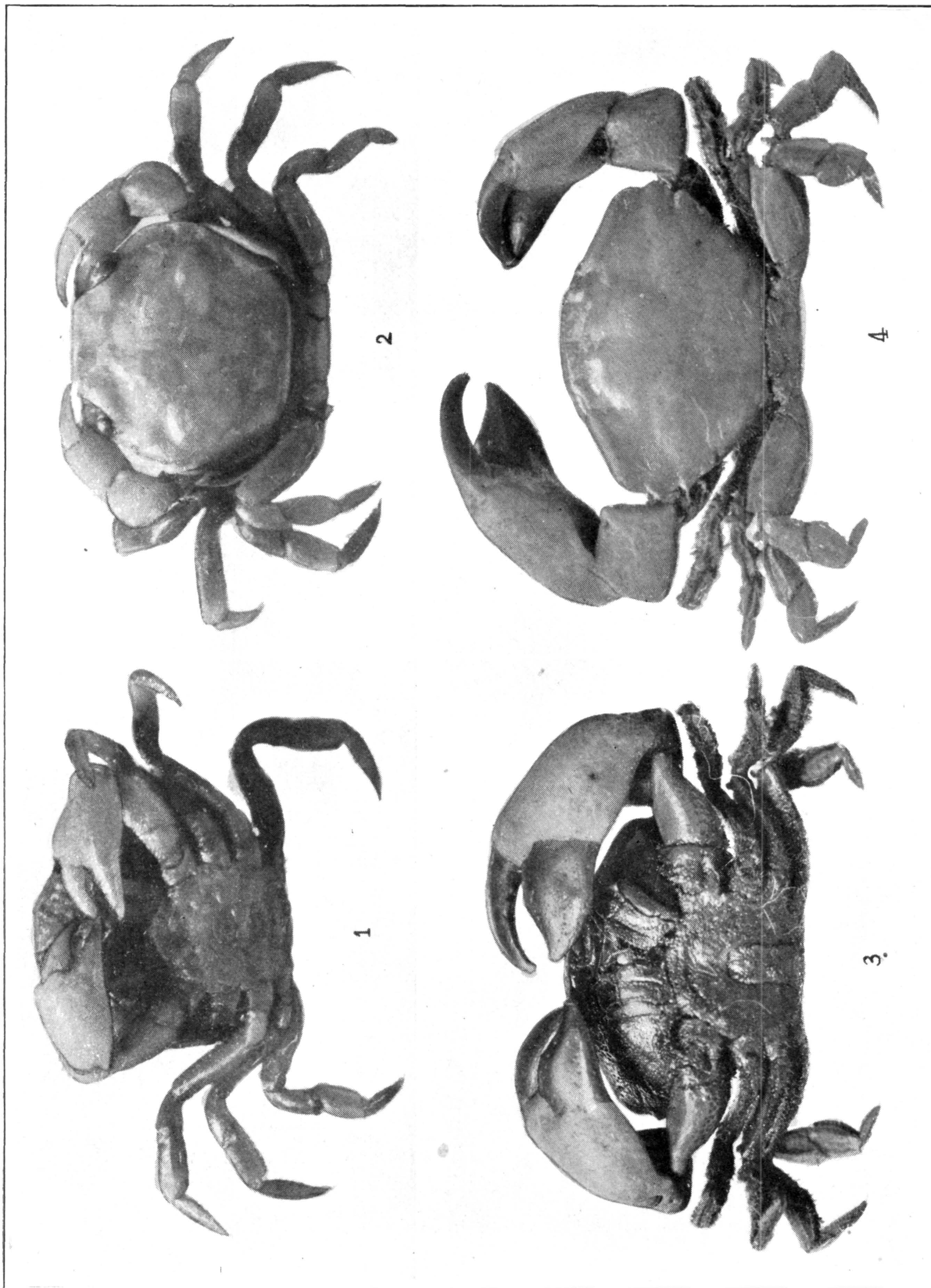
*XANTHODIUS DENTICULATUS* (P. 314)

FOR EXPLANATION OF PLATE SEE PAGE 580.



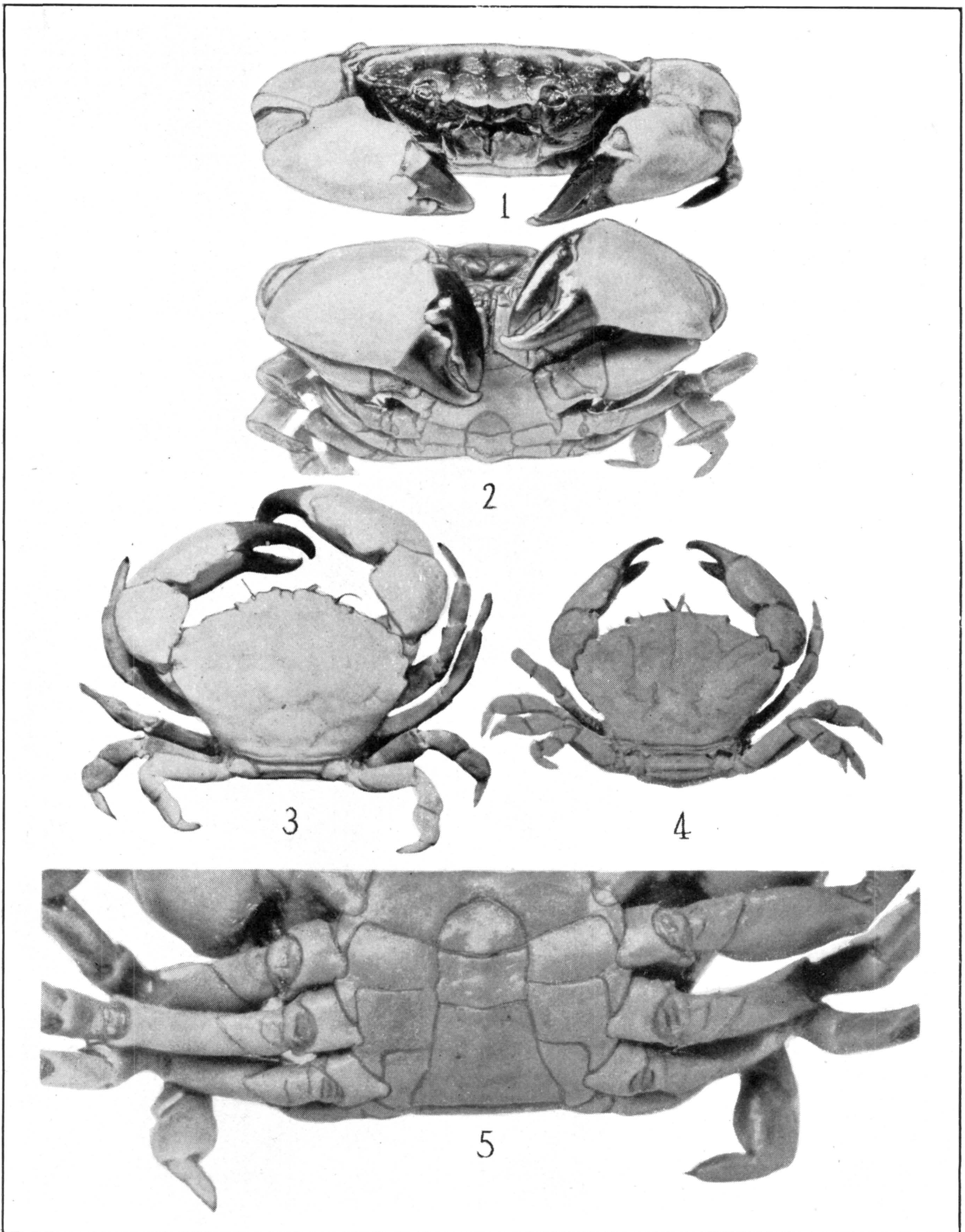
XANTHODIUS HEBES (P. 313)

FOR EXPLANATION OF PLATE SEE PAGE 580.



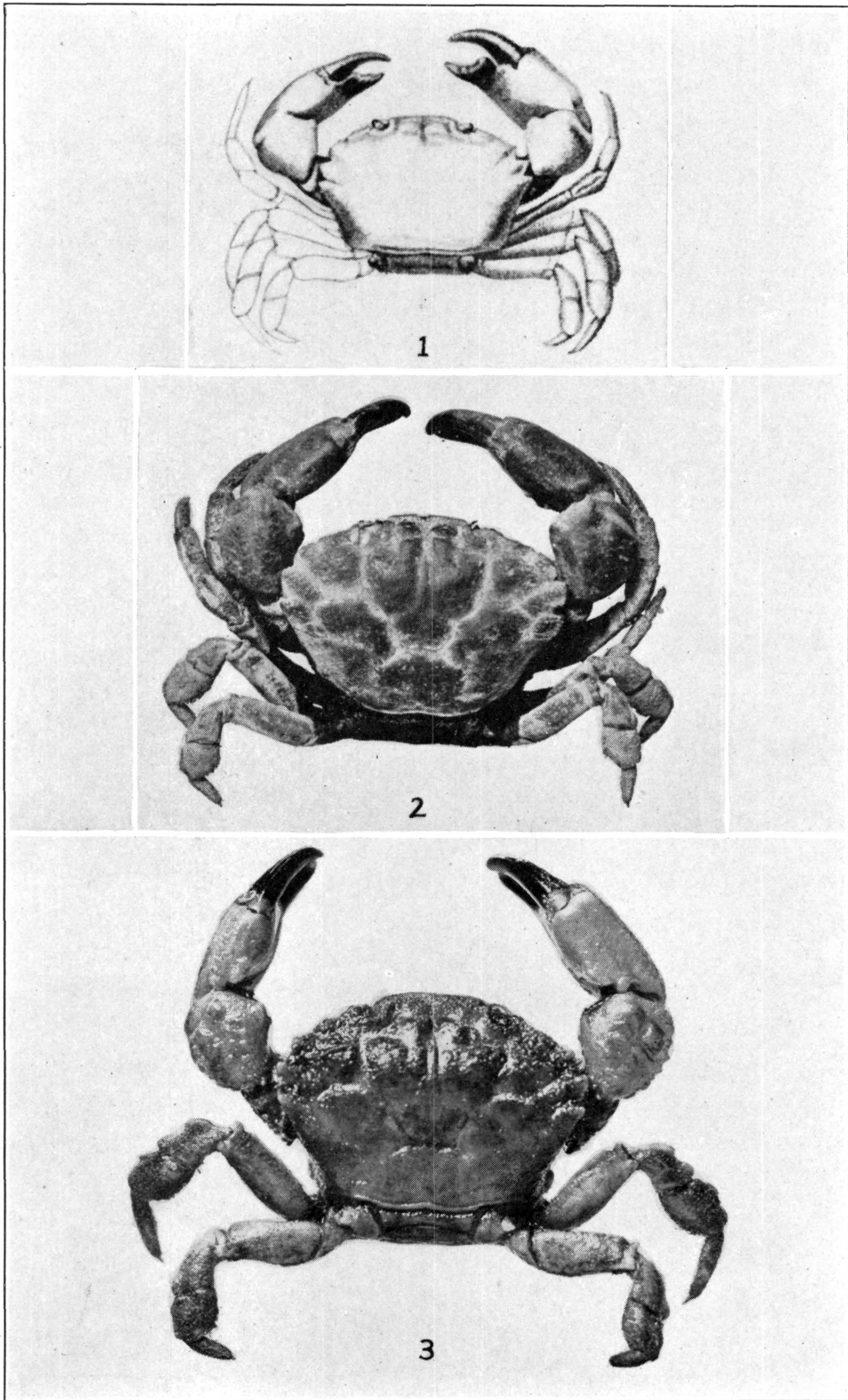
1, 2. METOPOCARCINUS TRUNCATUS (P. 318). 3, 4. LOPHOXANTHUS LAMELLIPES (P. 317)

FOR EXPLANATION OF PLATE SEE PAGE 580.



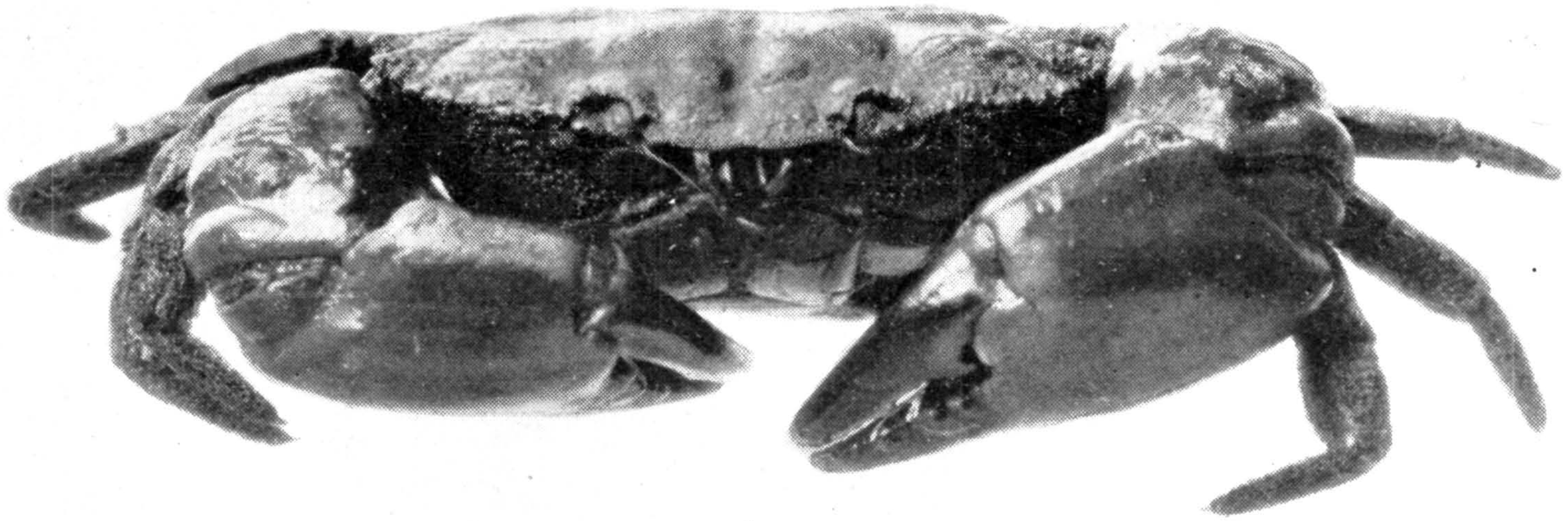
LOPHOPANOPEUS HEATHII (P. 322)

FOR EXPLANATION OF PLATE SEE PAGE 580.

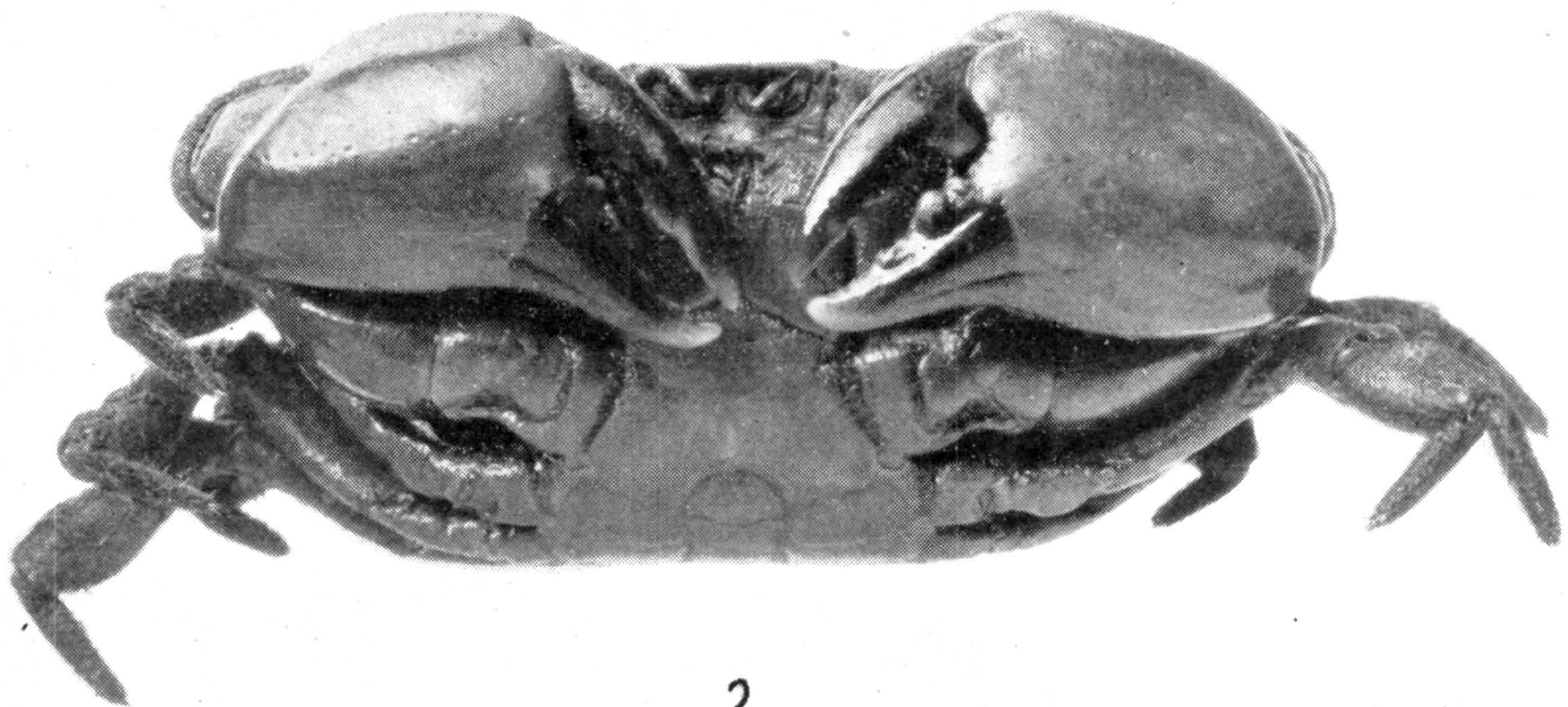


*LOPHOPANOPEUS BELLUS* (P. 320)

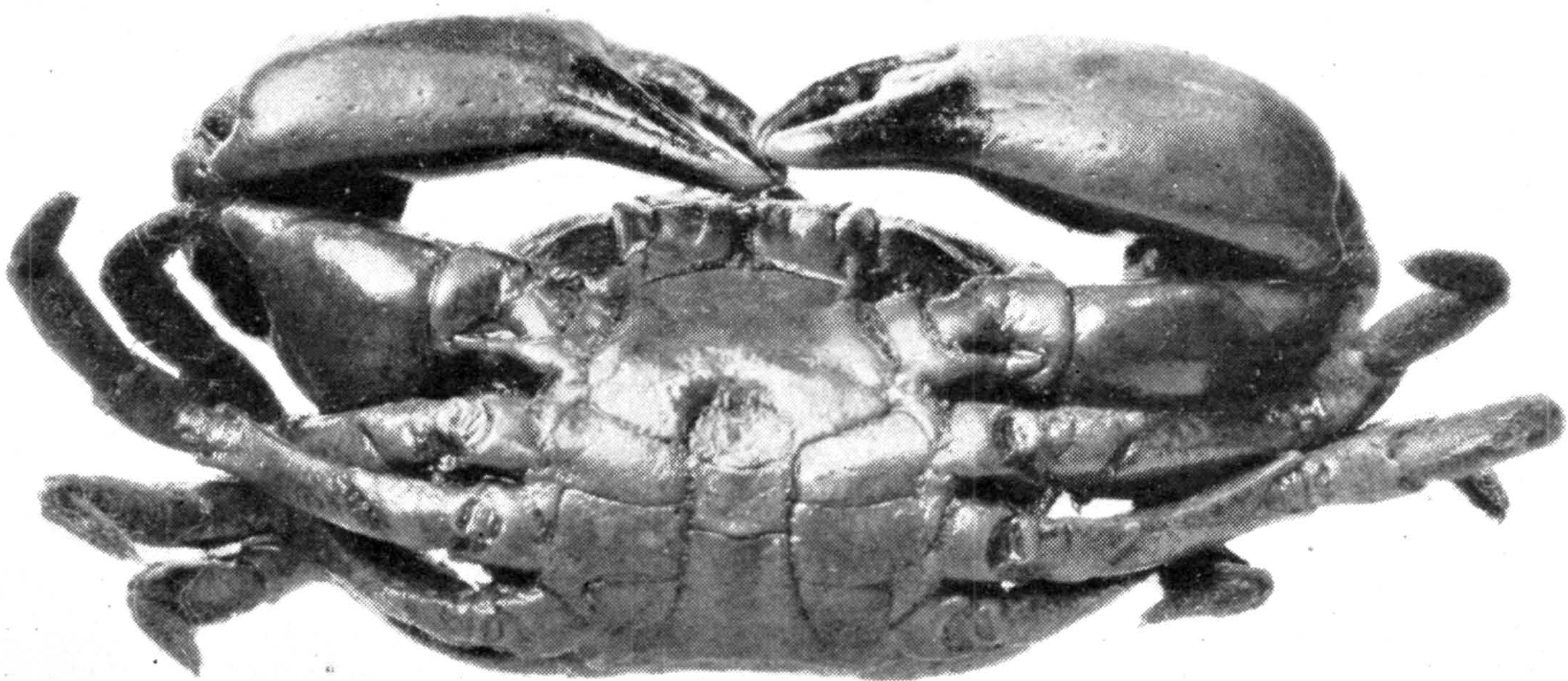
FOR EXPLANATION OF PLATE SEE PAGE 580.



1



2

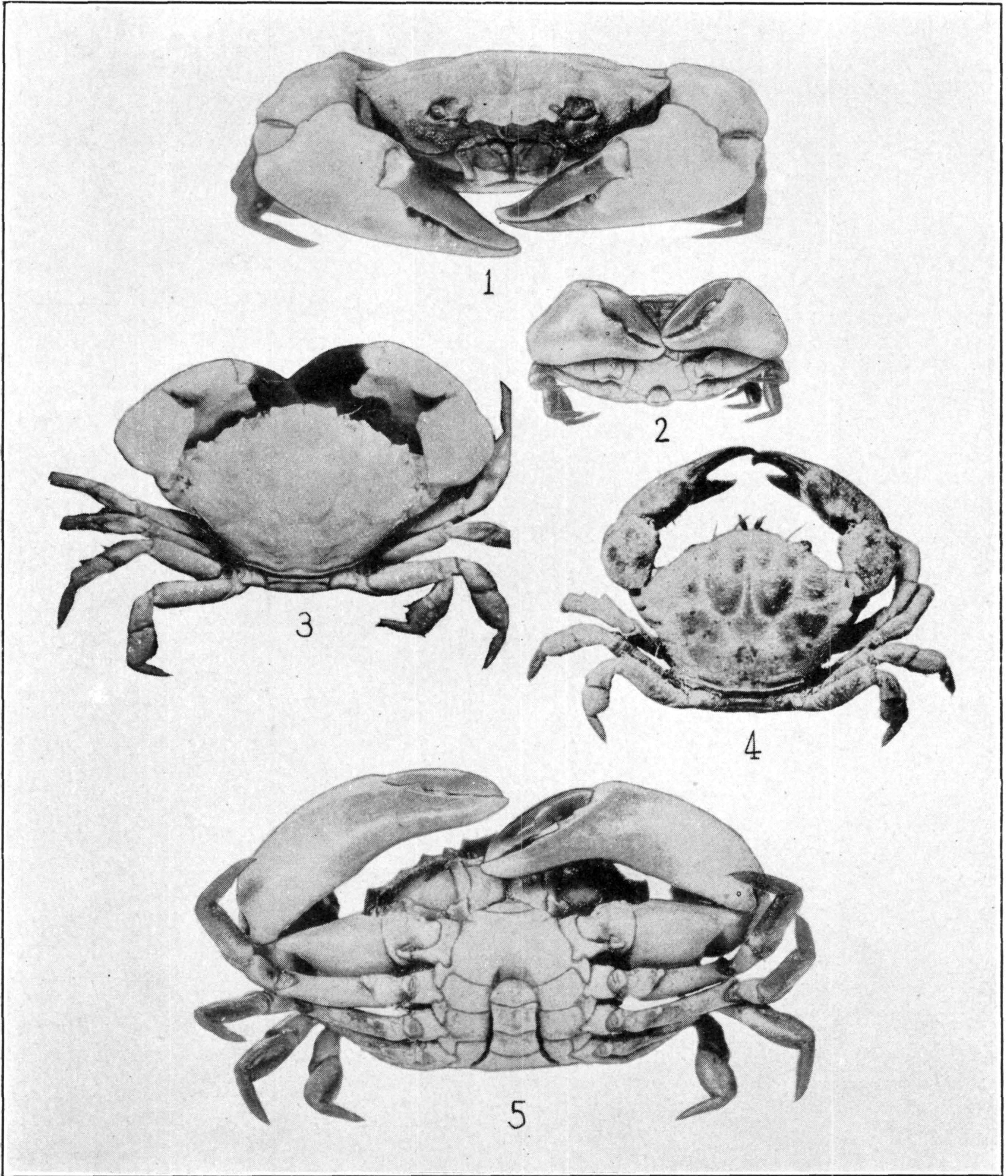


3

LOPHOPANOPEUS BELLUS (P. 320)

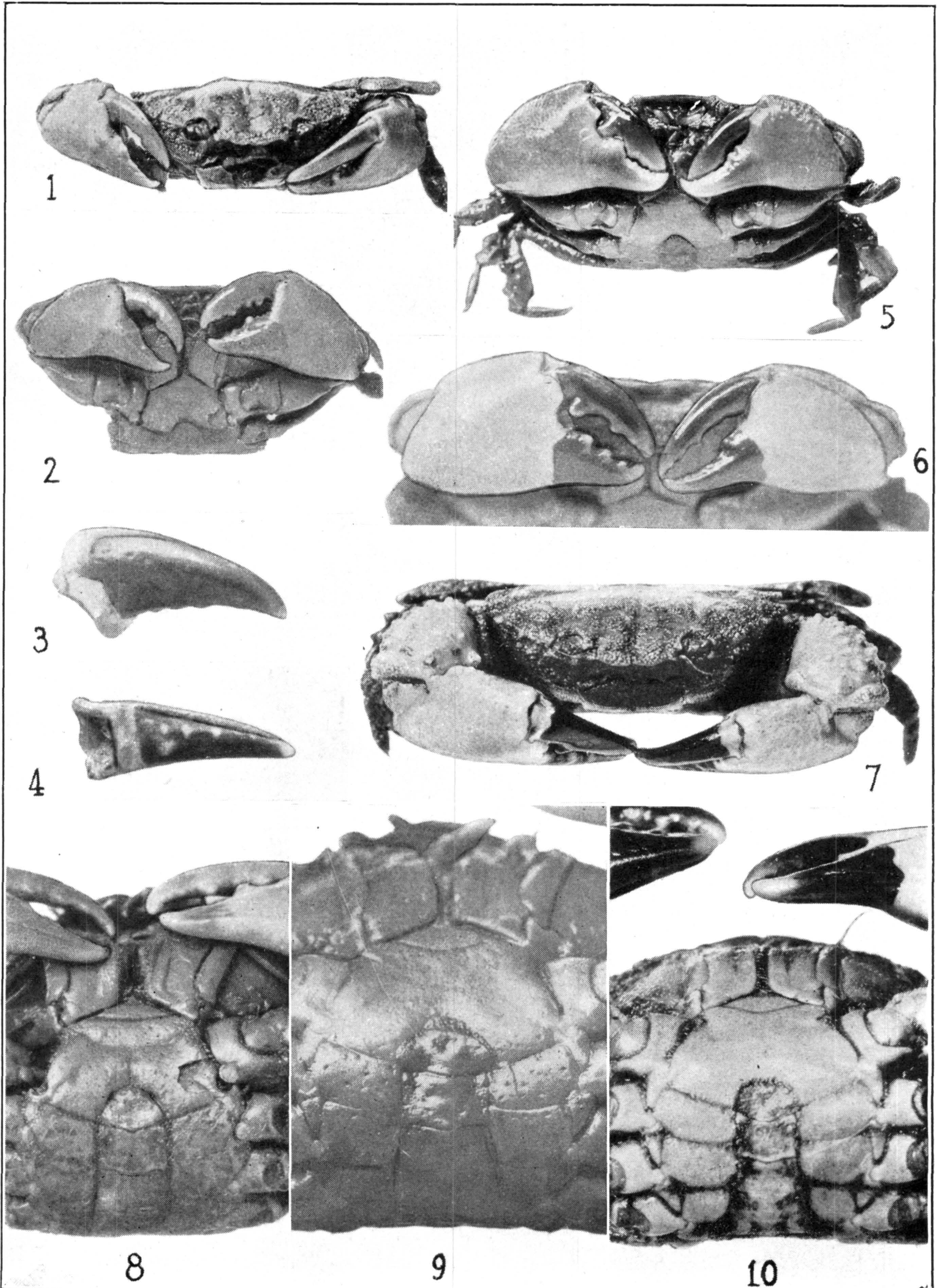
FOR EXPLANATION OF PLATE SEE PAGE 581.





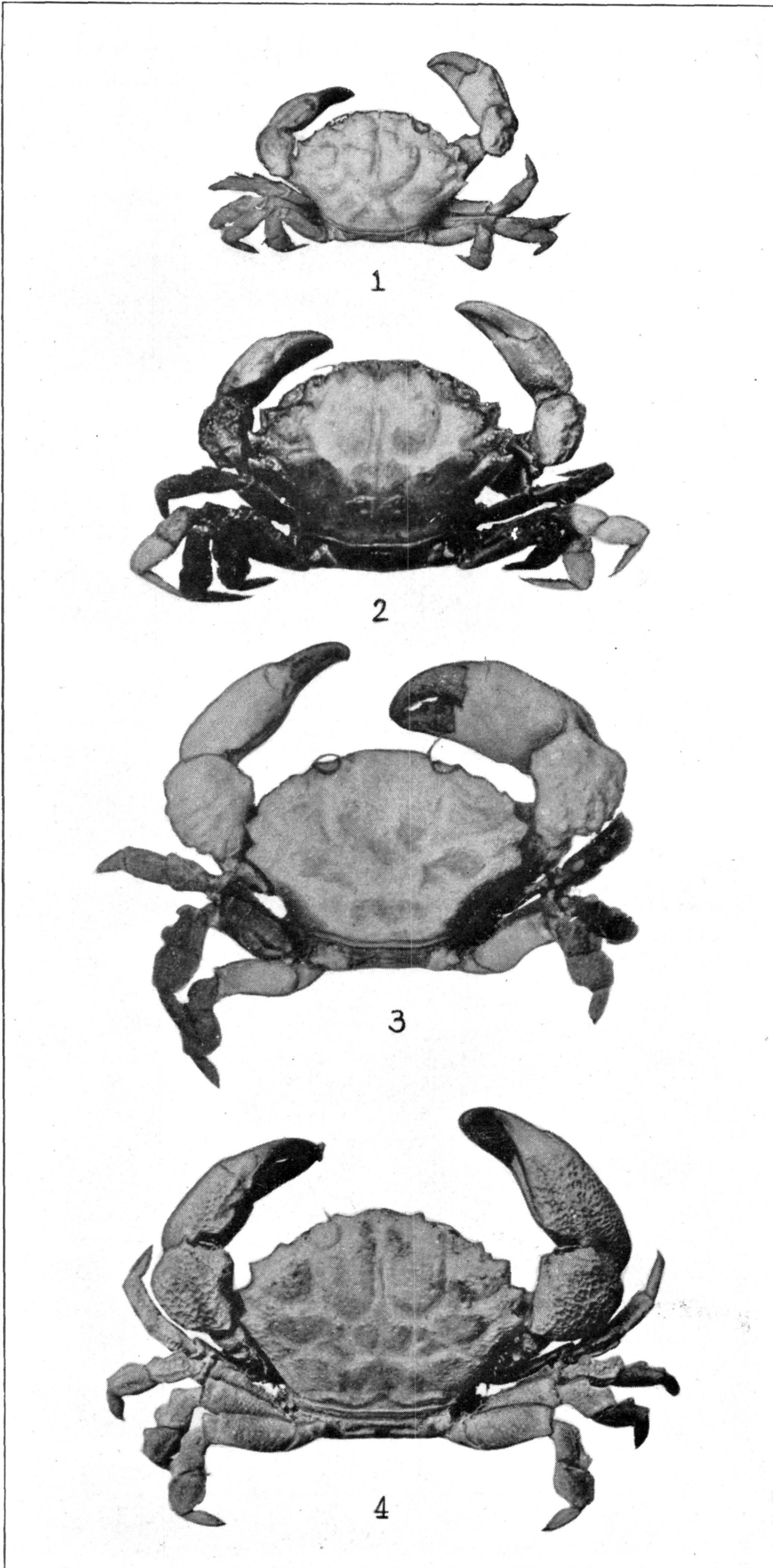
*LOPHOPANOPEUS FRONTALIS* (P. 323)

FOR EXPLANATION OF PLATE SEE PAGE 581.



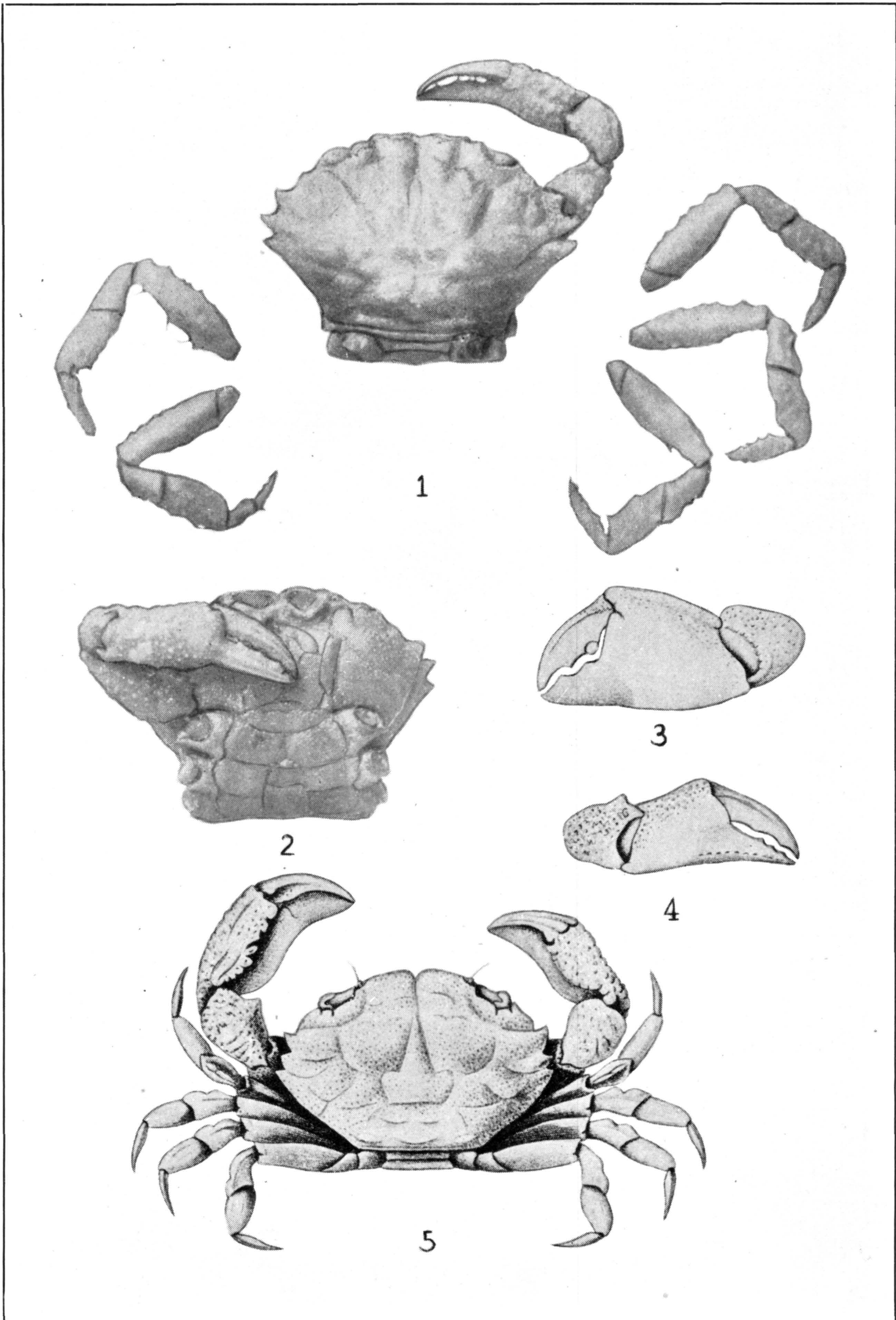
1, 2, 8. *LOPHOPANOPEUS LOCKINGTONI* (P. 325). 3, 4. *L. SOMATERIANUS* (P. 332).  
5, 9. *L. LEUCOMANUS* (P. 324). 6, 7, 10. *L. DIEGENSIS* (P. 327)

FOR EXPLANATION OF PLATE SEE PAGE 581.



1-3. *LOPHOPANOPEUS LOCKINGTONI* (P. 325). 4. *L. LEUCOMANUS* (P. 324)

FOR EXPLANATION OF PLATE SEE PAGE 581.



1, 2. *LOPHOPANOPEUS DISTINCTUS* (P. 331). 3-5. *L. LOBIPES* (P. 329)

FOR EXPLANATION OF PLATE SEE PAGE 581.