

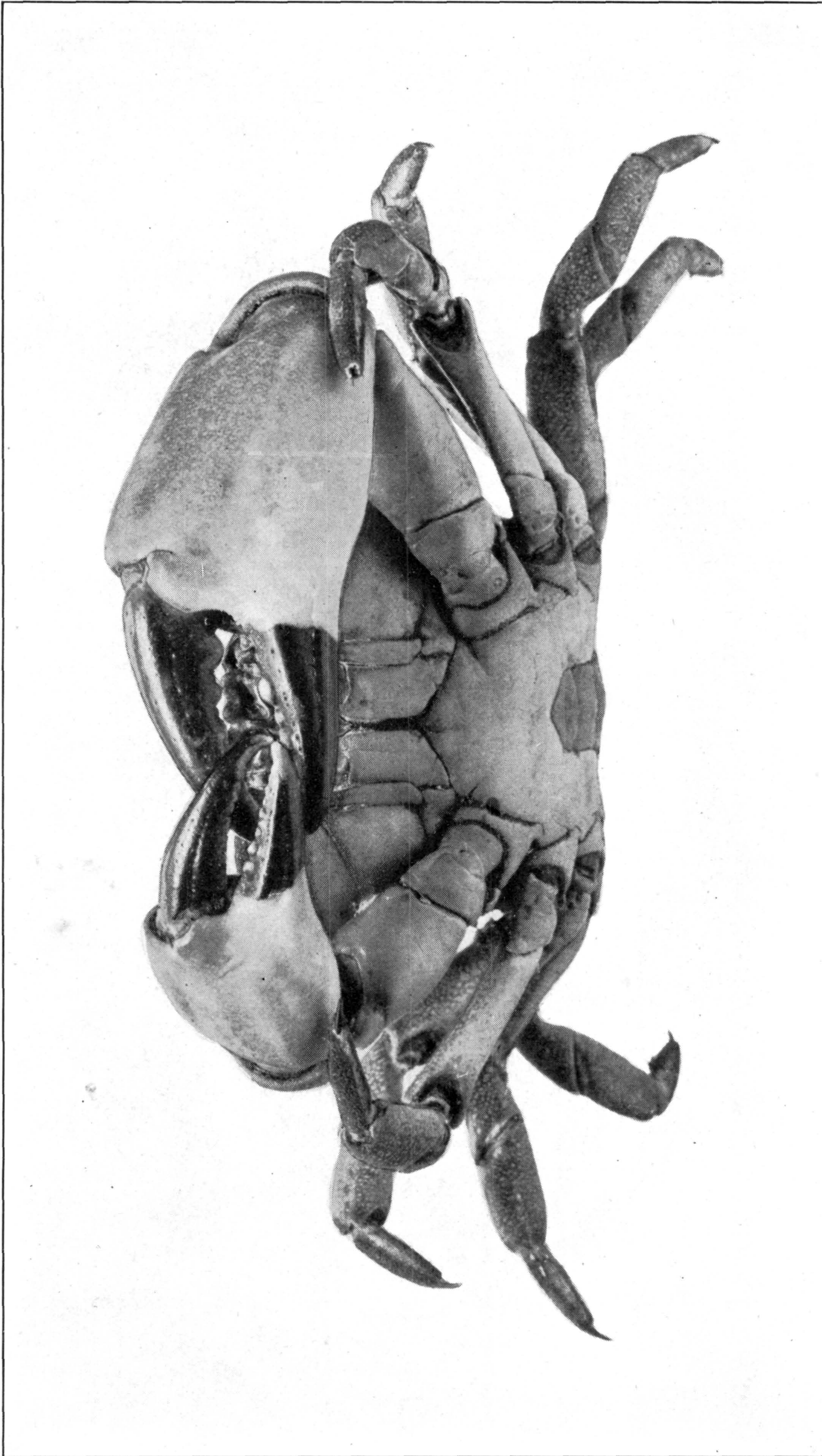
1. PLATYXANTHUS CRENULATUS (P. 281). 2. P. ORBIGNYI (P. 280)

FOR EXPLANATION OF PLATE SEE PAGE 576.



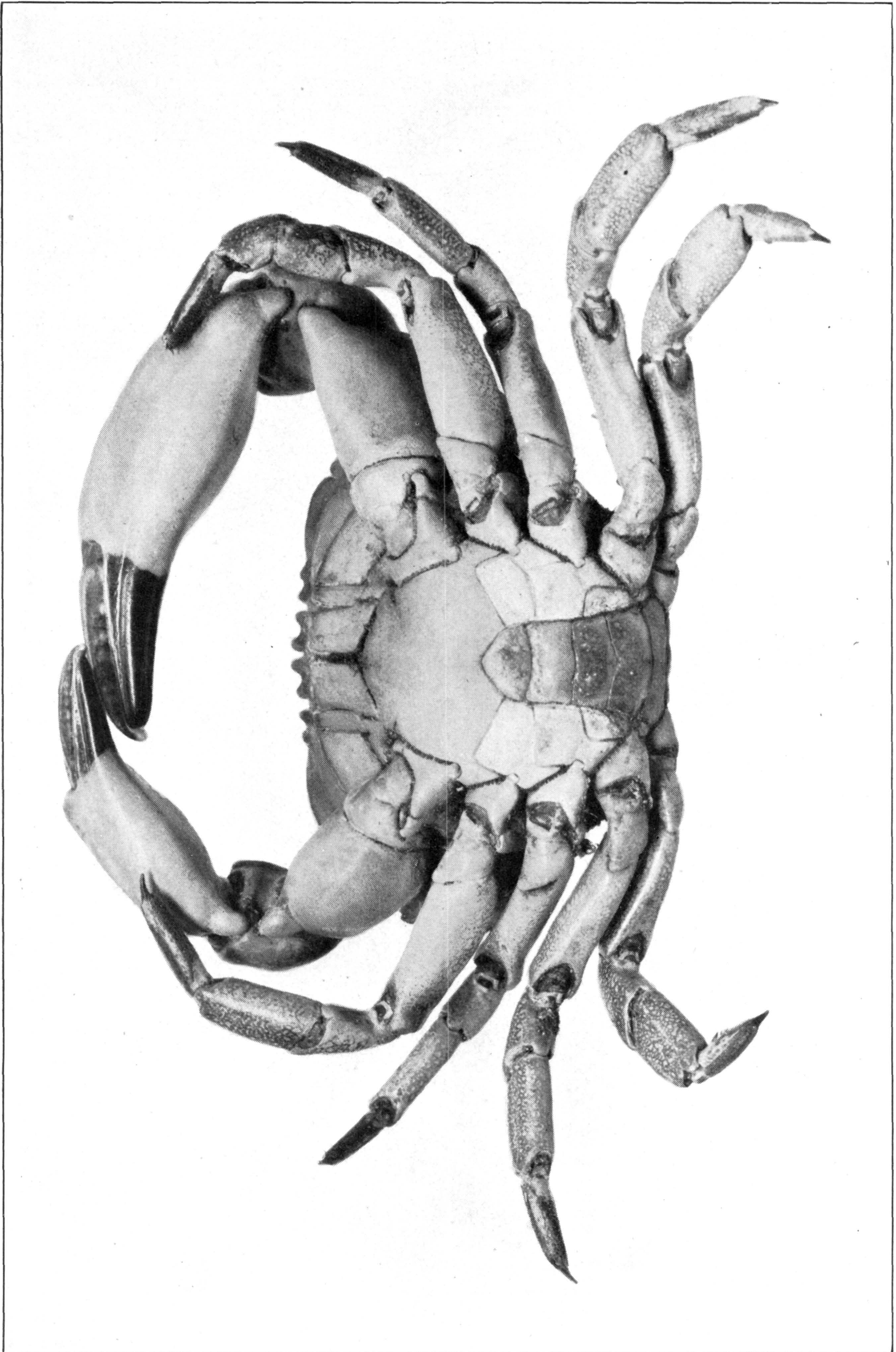
PLATYXANTHUS CRENULATUS (P. 281)

FOR EXPLANATION OF PLATE SEE PAGE 576.



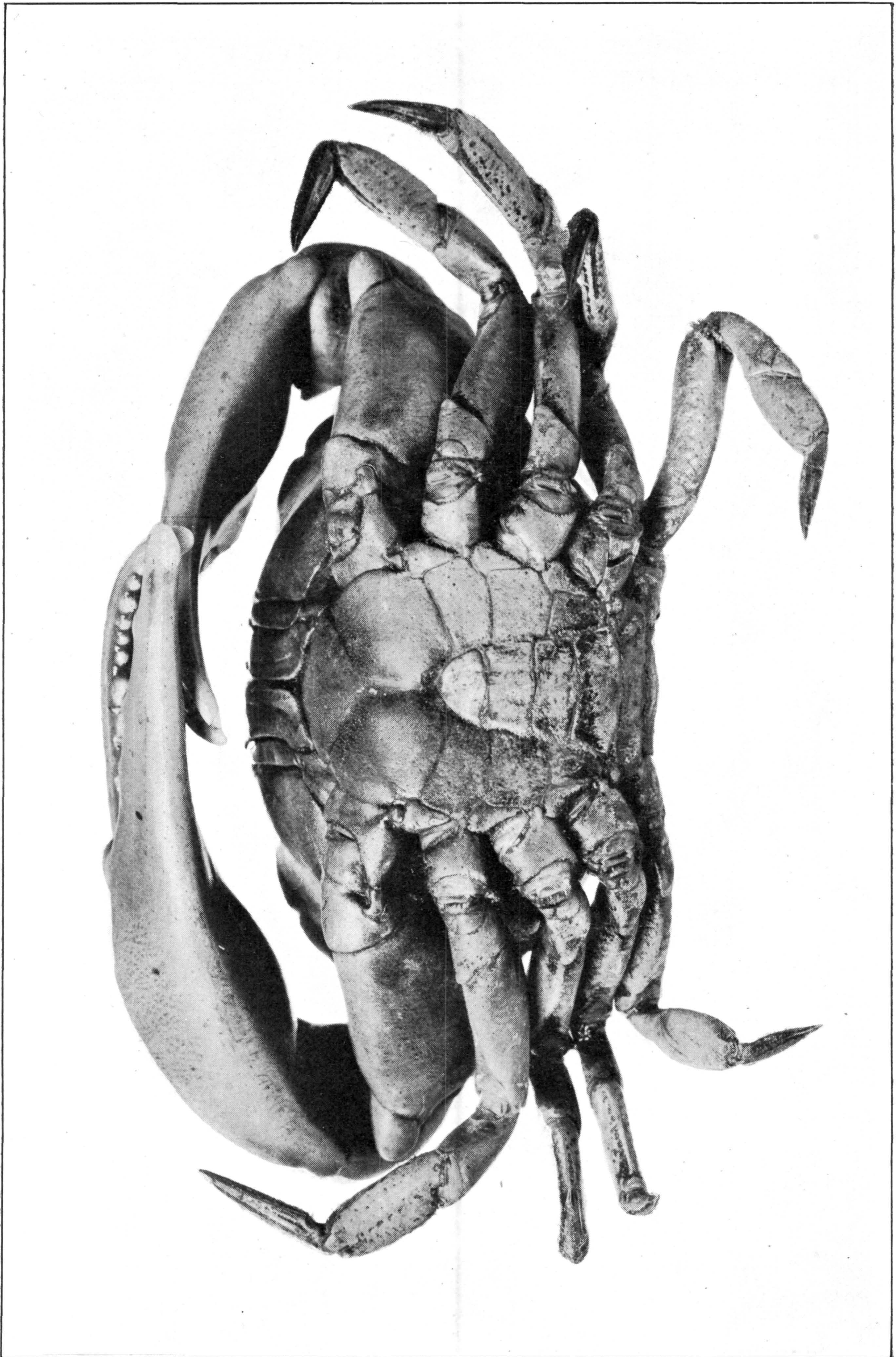
PLATYXANTHUS CRENULATUS (P. 281)

FOR EXPLANATION OF PLATE SEE PAGE 576.



PLATYXANTHUS CRENULATUS (P. 281)

FOR EXPLANATION OF PLATE SEE PAGE 577.



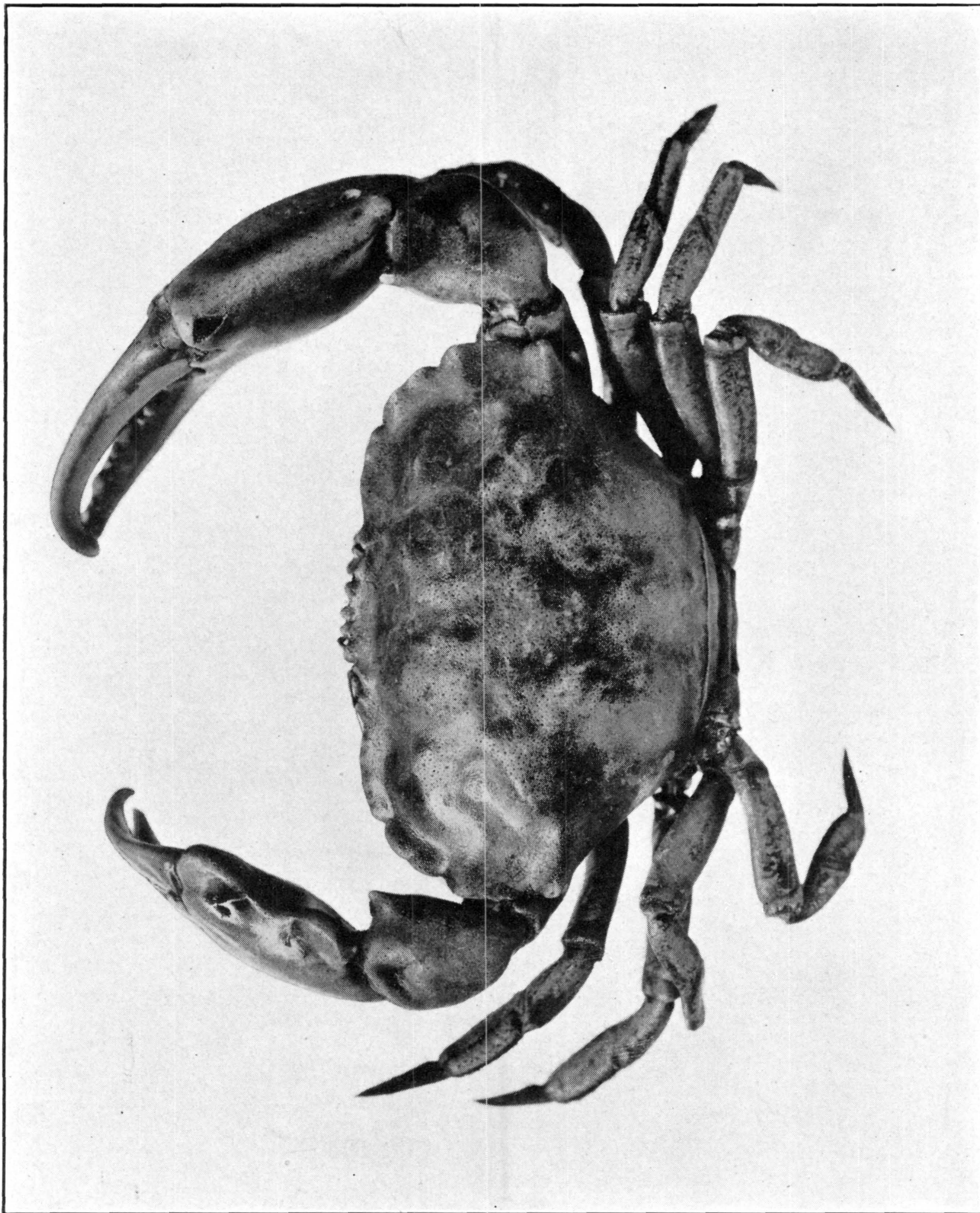
PLATYXANTHUS COKERI (P. 283)

FOR EXPLANATION OF PLATE SEE PAGE 577.



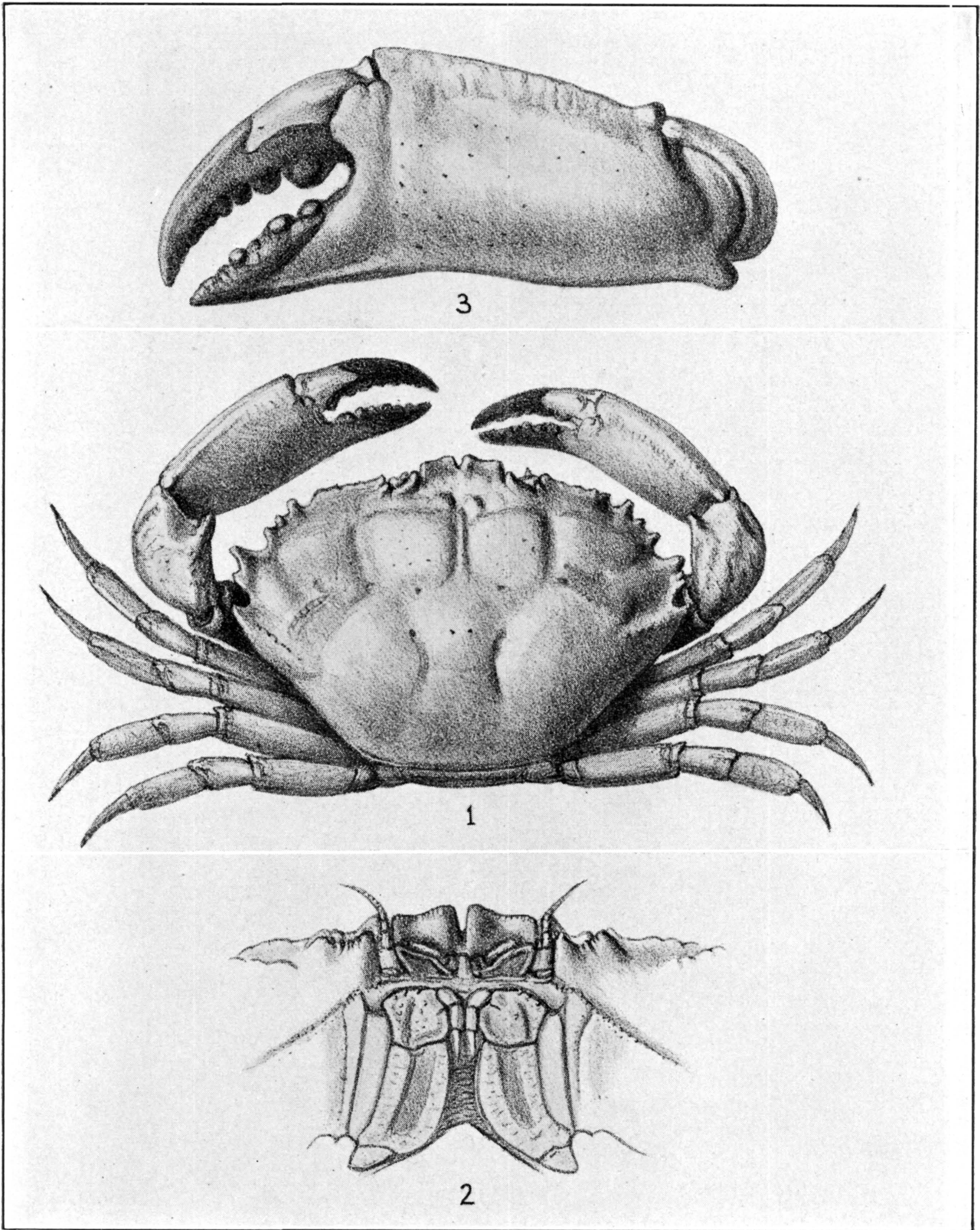
PLATYXANTHUS COKERI (P. 283)

FOR EXPLANATION OF PLATE SEE PAGE 577.



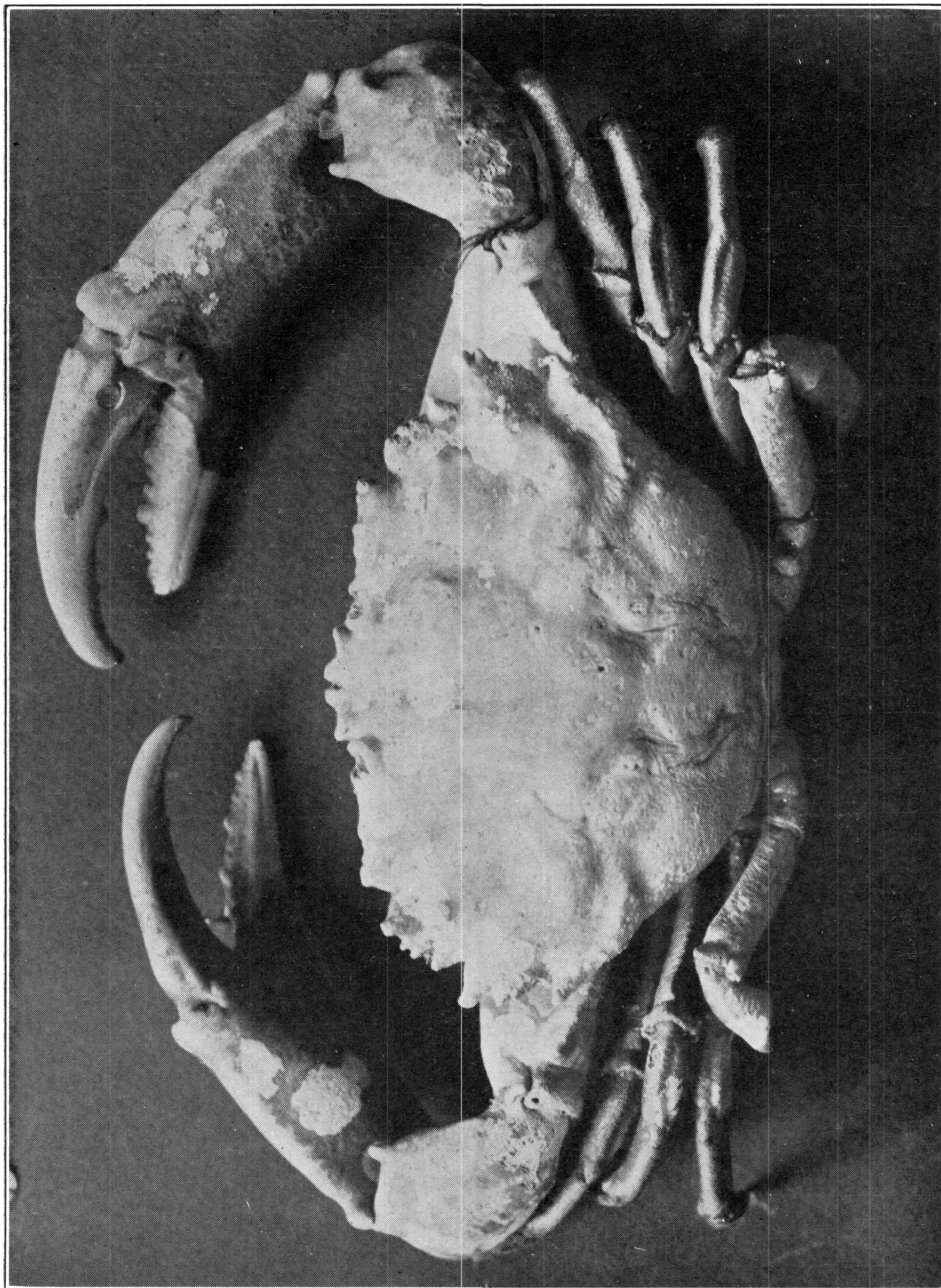
PLATYXANTHUS COKERI (P. 283)

FOR EXPLANATION OF PLATE SEE PAGE 577.



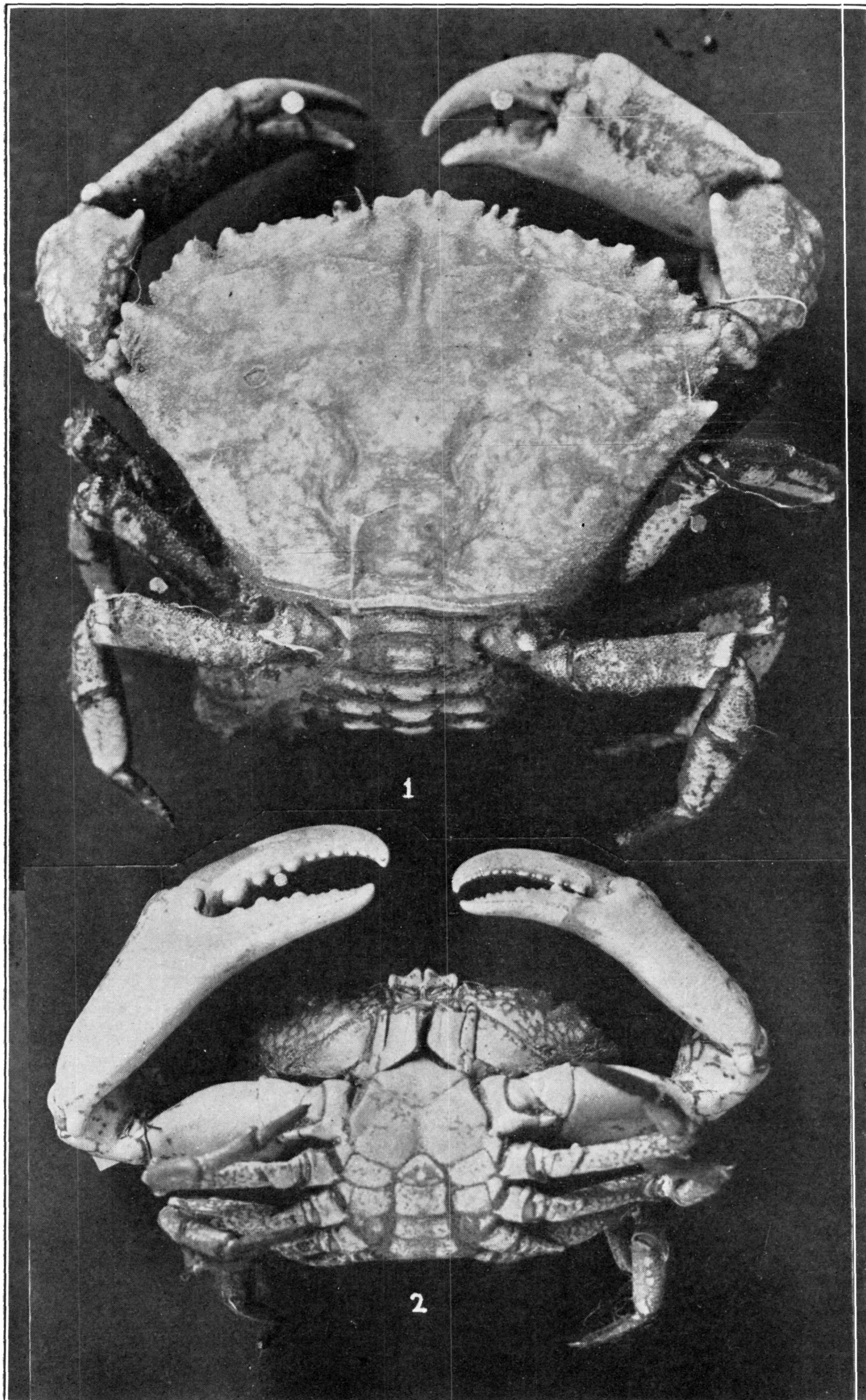
PLATYXANTHUS PATAGONICUS (P. 284)

FOR EXPLANATION OF PLATE SEE PAGE 577.



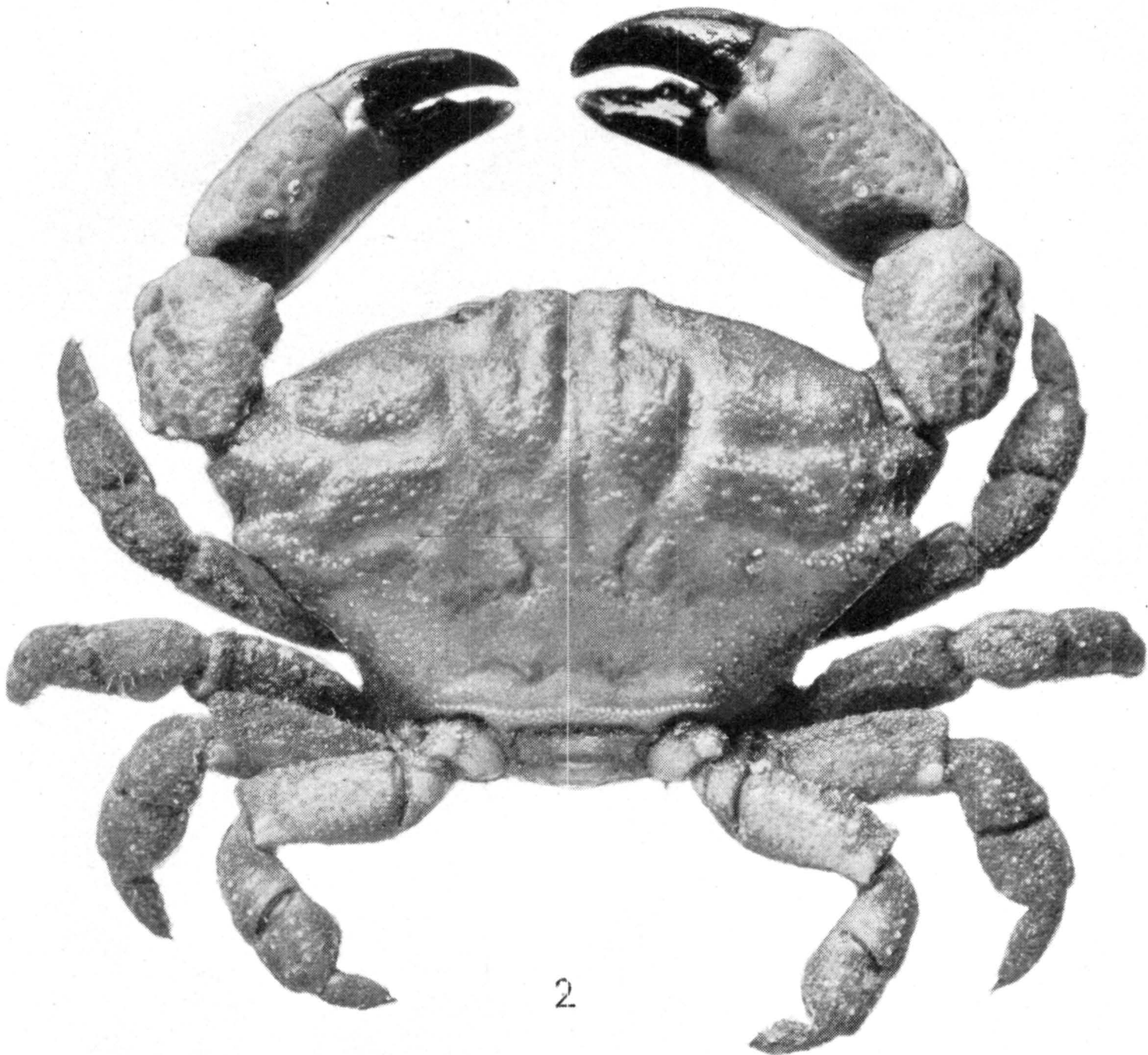
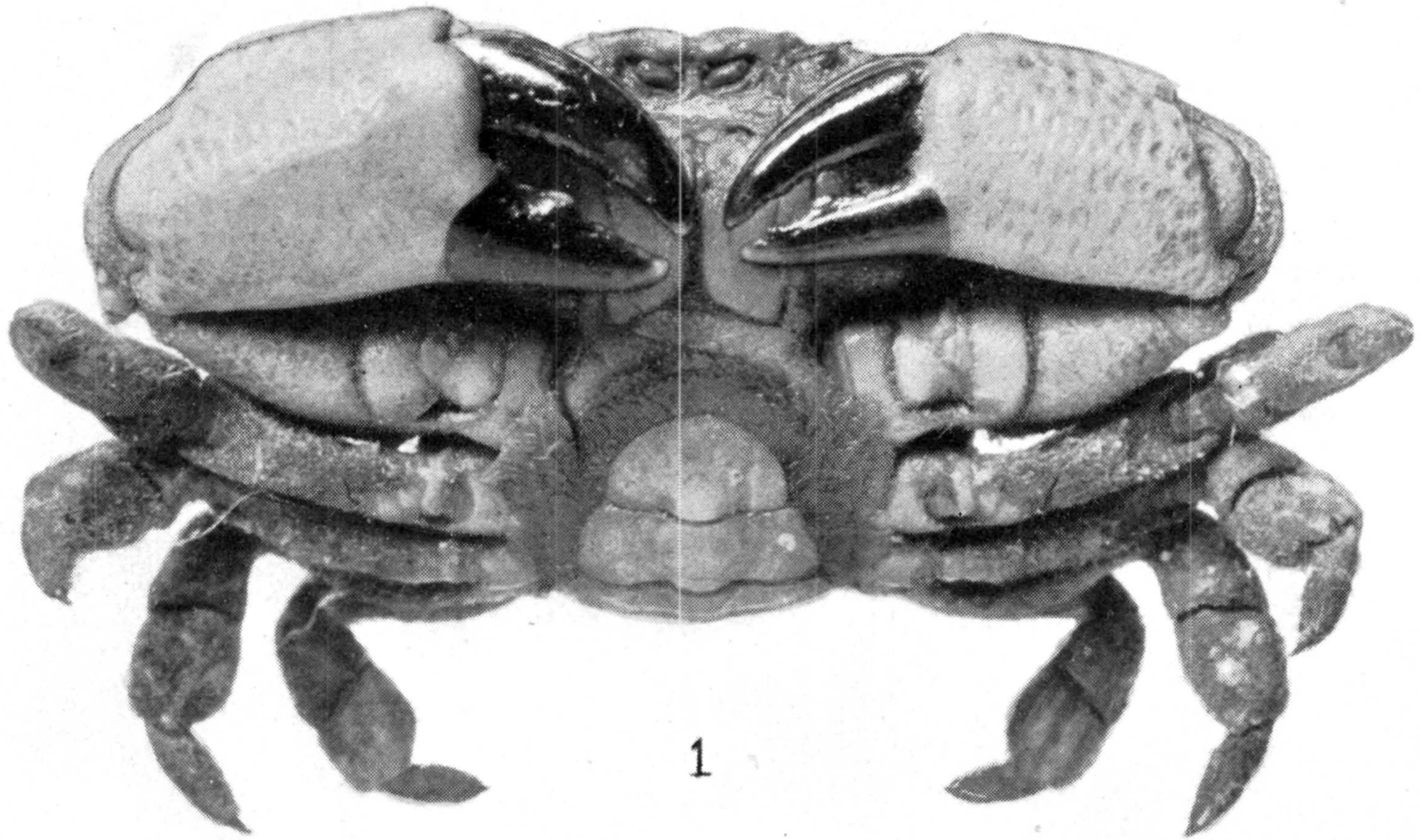
PLATYXANTHUS PATAGONICUS (P. 284)

FOR EXPLANATION OF PLATE SEE PAGE 577.



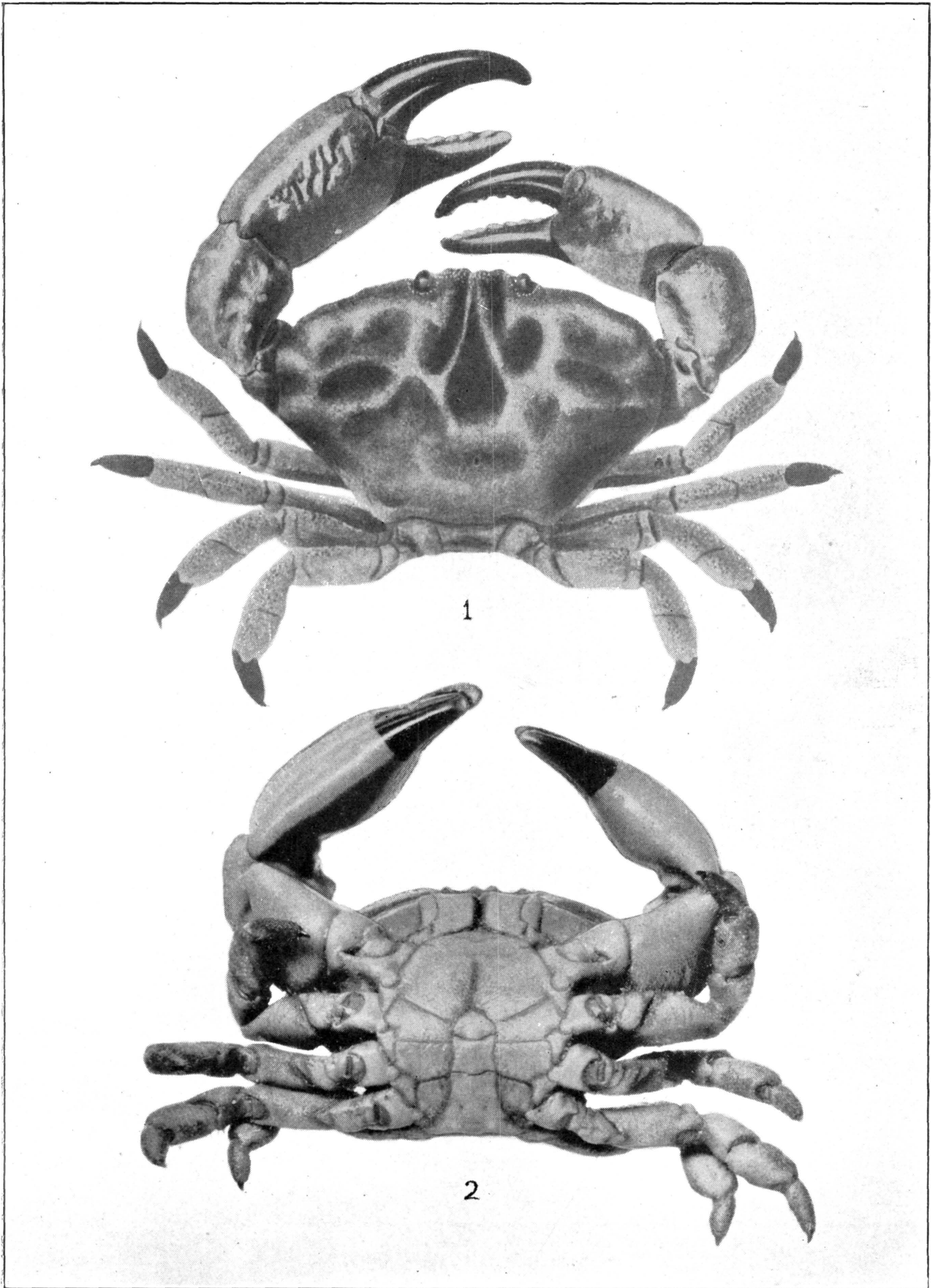
PLATYXANTHUS PATAGONICUS (P. 284)

FOR EXPLANATION OF PLATE SEE PAGE 577.



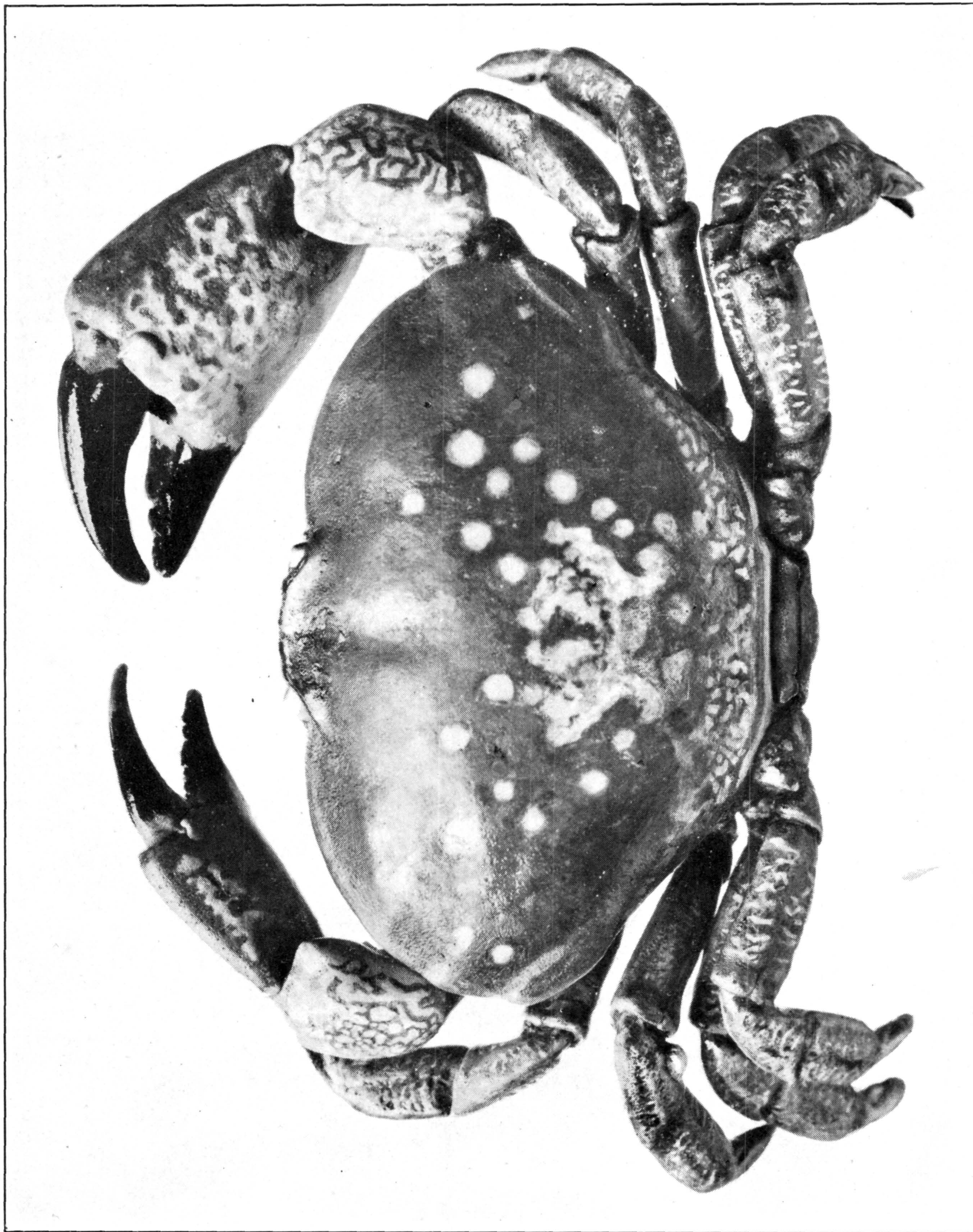
GAUDICHAUDIA GAUDICHAUDI (P. 278)

FOR EXPLANATION OF PLATE SEE PAGE 577.



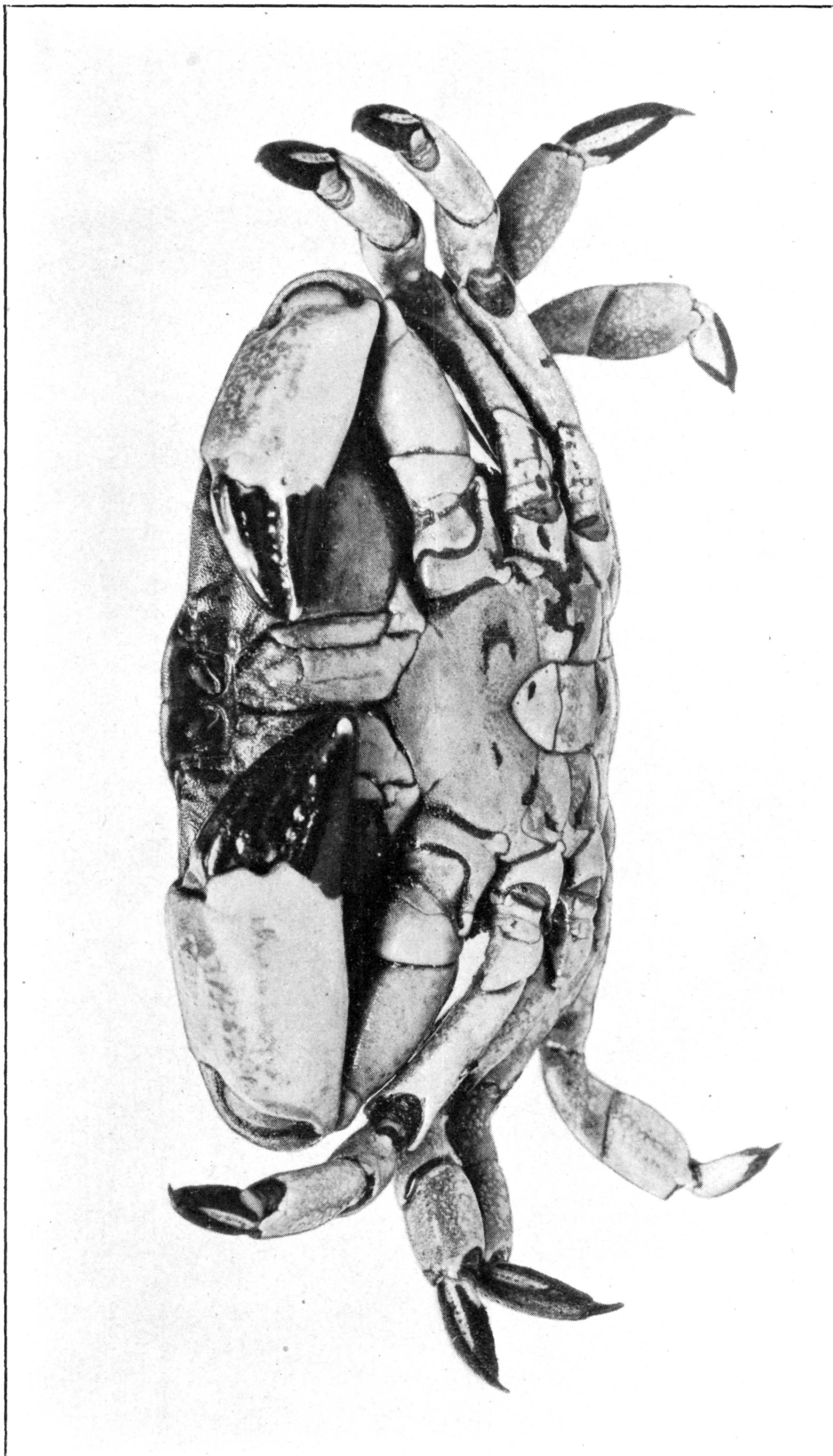
GAUDICHAUDIA GAUDICHAUDII (P. 278)

FOR EXPLANATION OF PLATE SEE PAGE 577.



HOMALASPIS PLANA (P. 288)

FOR EXPLANATION OF PLATE SEE PAGE 577.



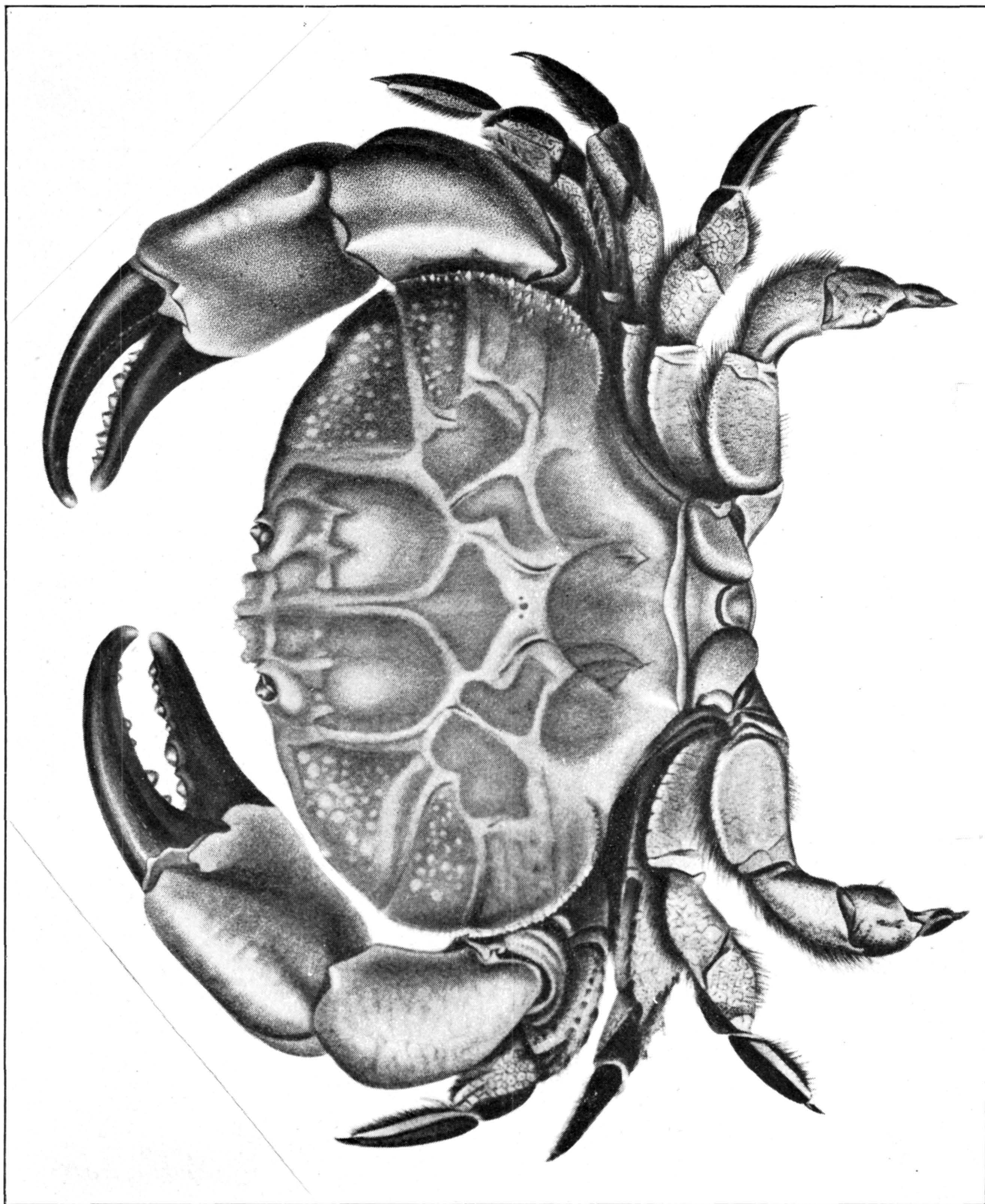
HOMALASPIS PLANA (P. 288)

FOR EXPLANATION OF PLATE SEE PAGE 577.



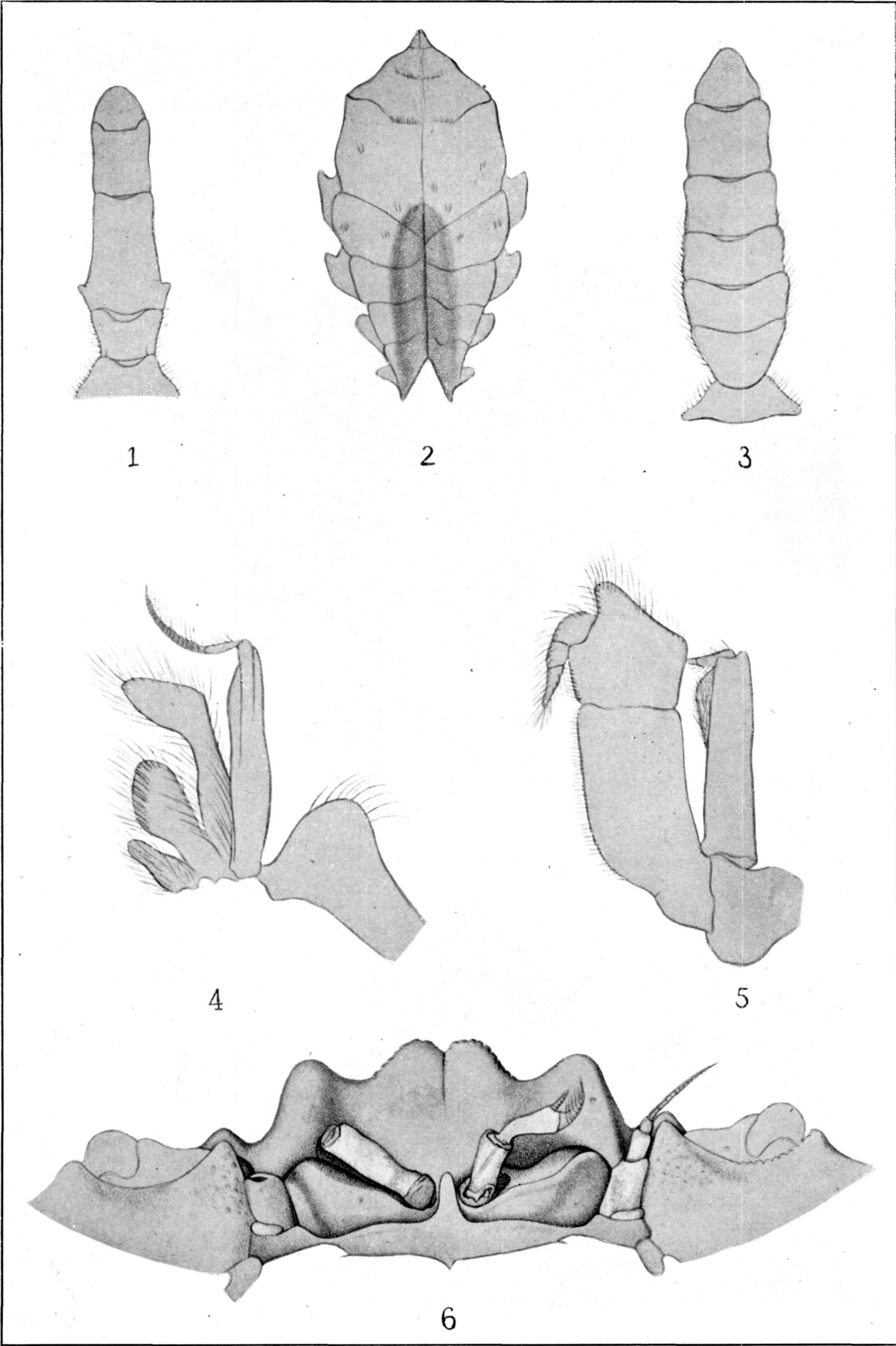
HOMALASPIS PLANA (P. 288)

FOR EXPLANATION OF PLATE SEE PAGE 578.

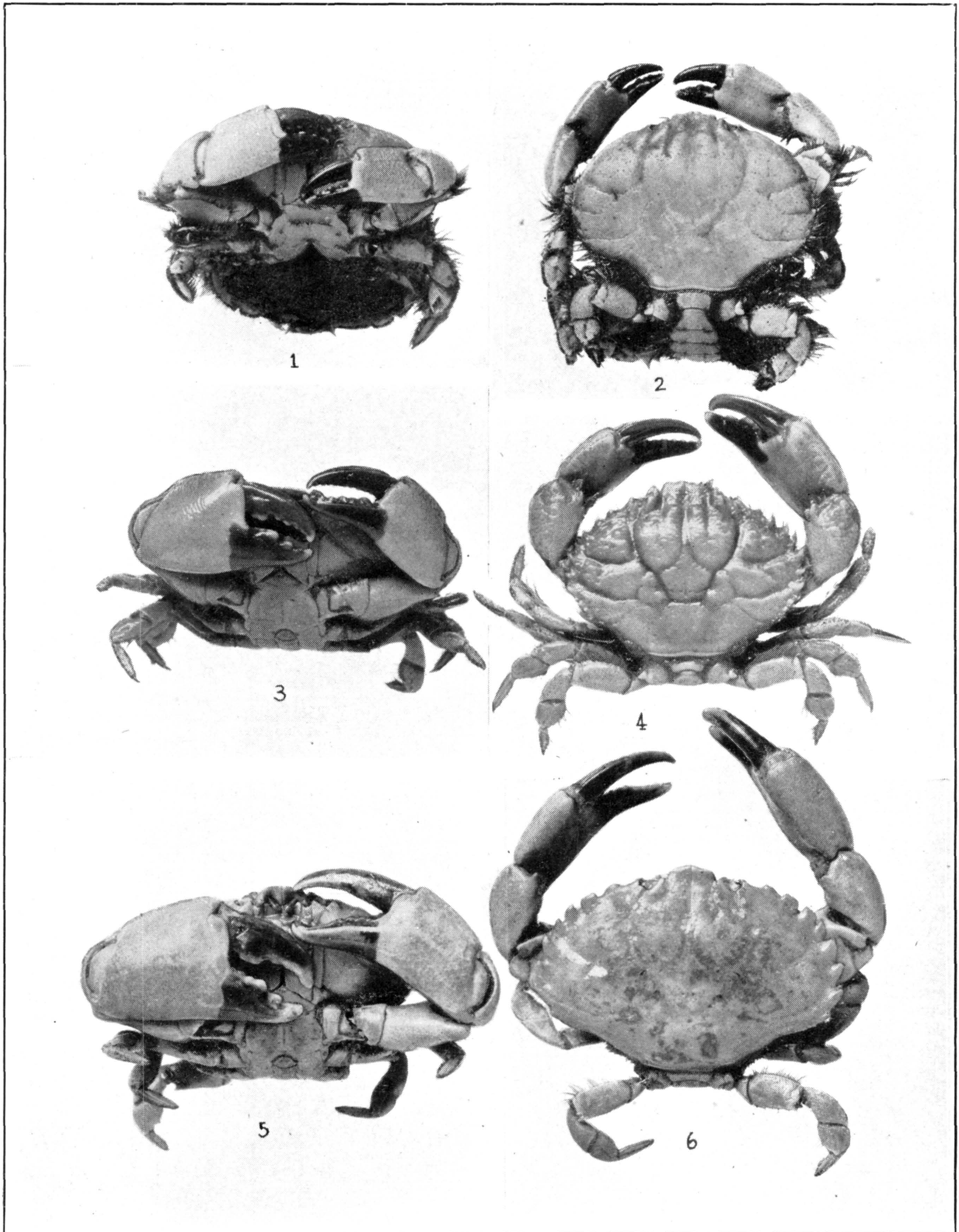


PARAXANTHUS BARBIGER (P. 286)

FOR EXPLANATION OF PLATE SEE PAGE 578.

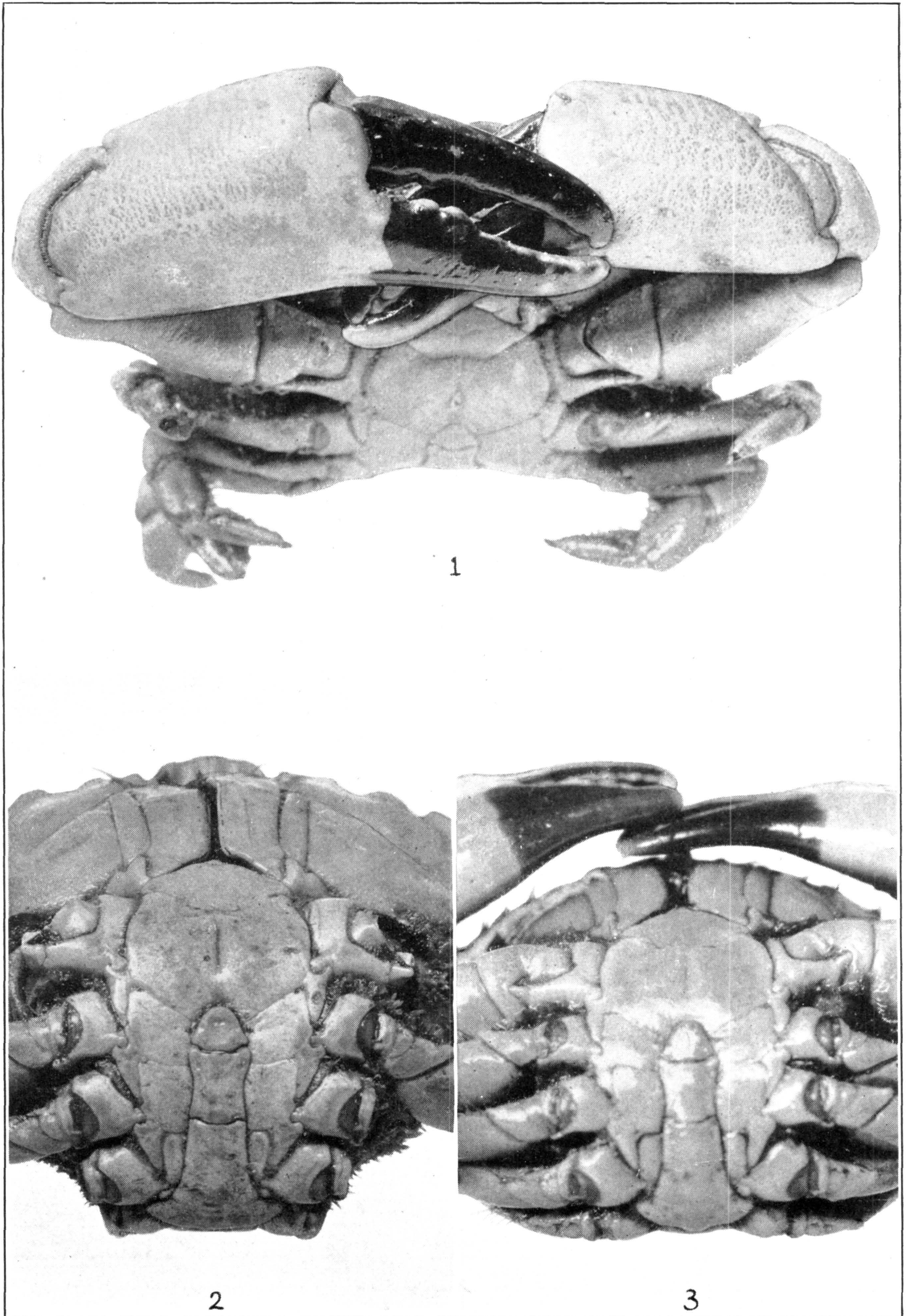


PARAXANTHUS BARBIGER (P. 286)
FOR EXPLANATION OF PLATE SEE PAGE 578.



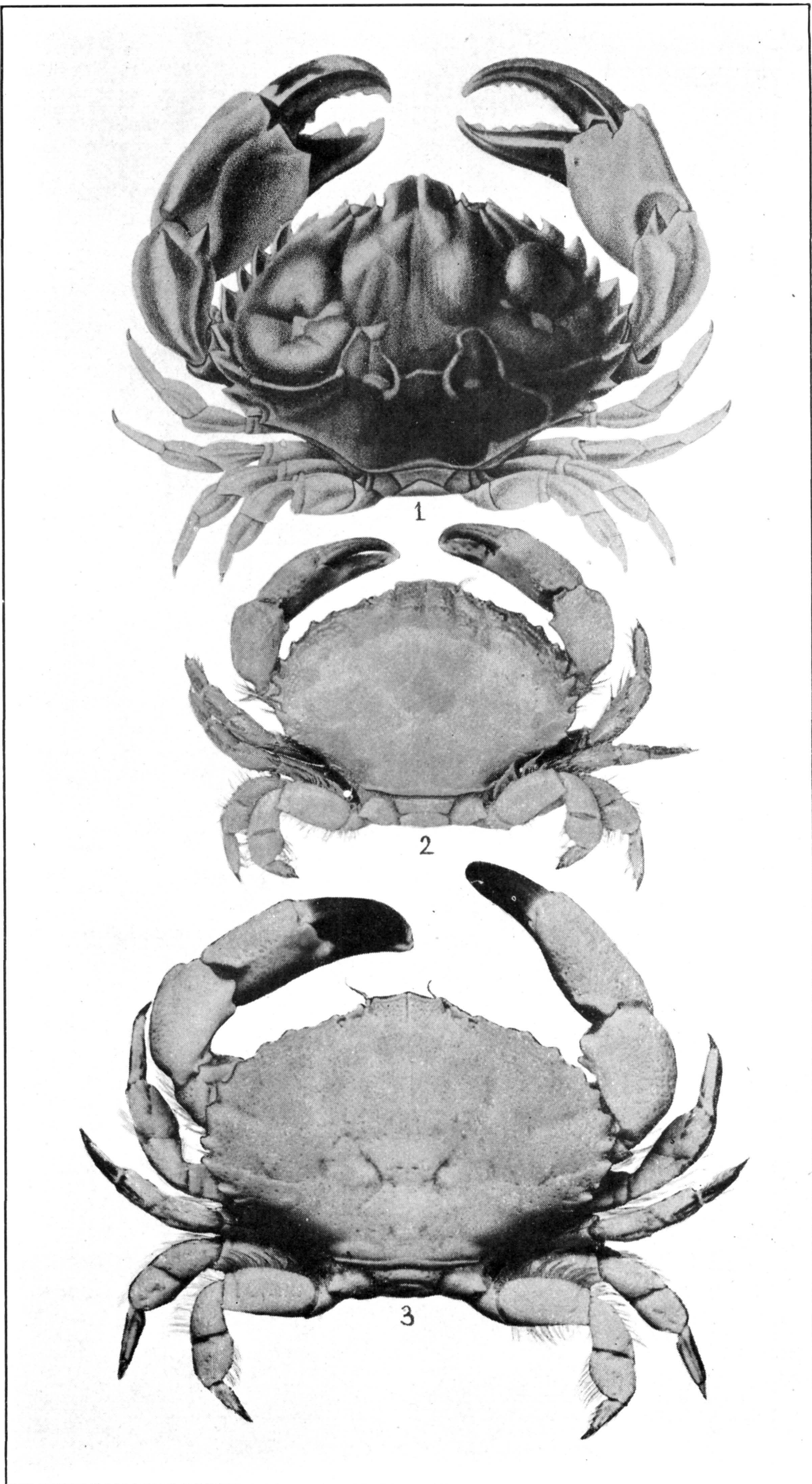
1, 2. *PARAXANTHUS BARBIGER* (P. 286). 3, 4. *CYCLOXANTHOPS VITTATUS* (P. 291).
5, 6. *C. SEXDECIMIDENTATUS* (P. 290)

FOR EXPLANATION OF PLATE SEE PAGE 578.



1. *CYCLOXANTHOPS NOVEMDENTATUS* (P. 292). 2. *C. SEXDECIMDENTATUS* (P. 290).
3. *C. VITTATUS* (P. 291)

FOR EXPLANATION OF PLATE SEE PAGE 578.



1. *CYCLOXANTHOPS SEXDECIMIDENTATUS* (P. 290). 2, 3. *C. NOVEMDENTATUS* (P. 292)

FOR EXPLANATION OF PLATE SEE PAGE 578.