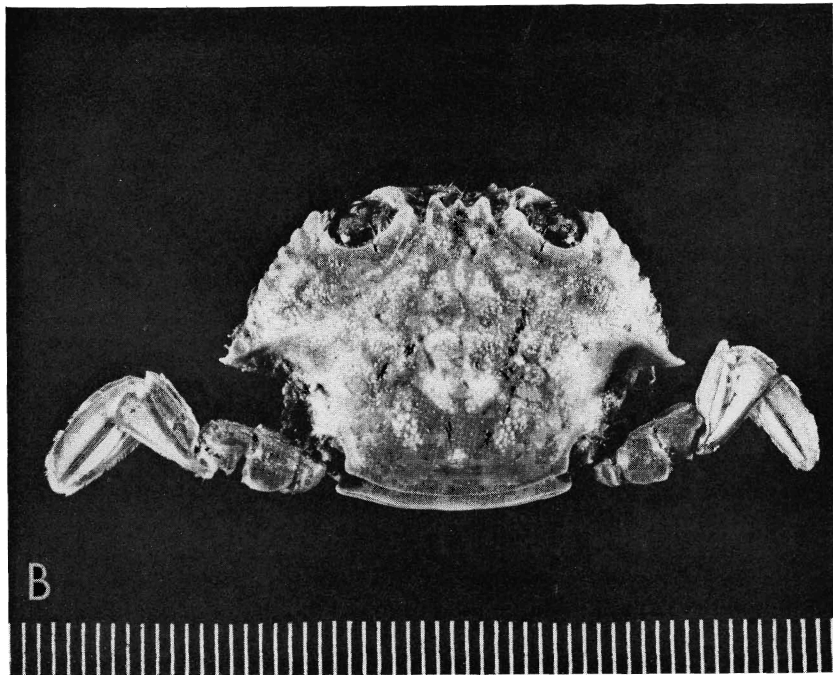
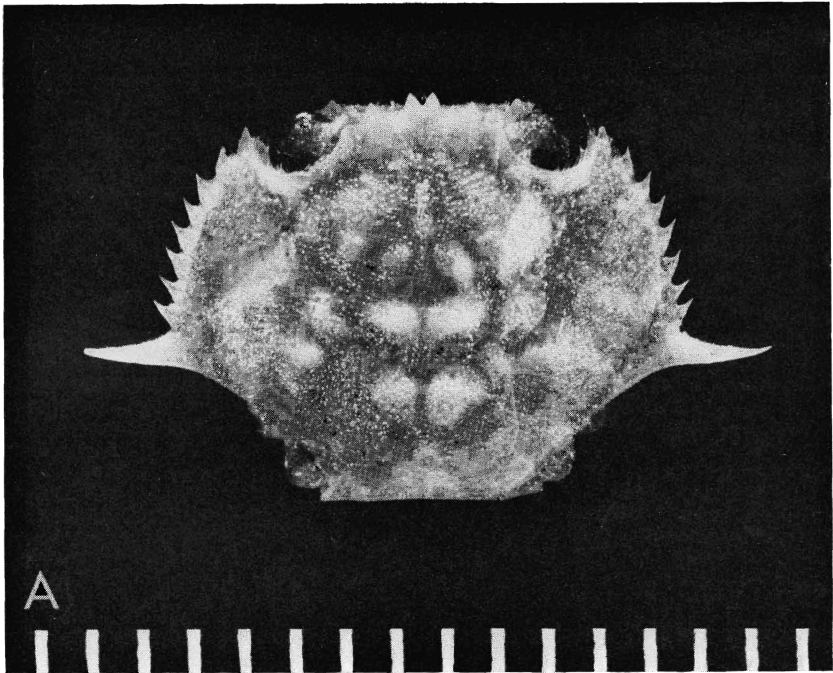
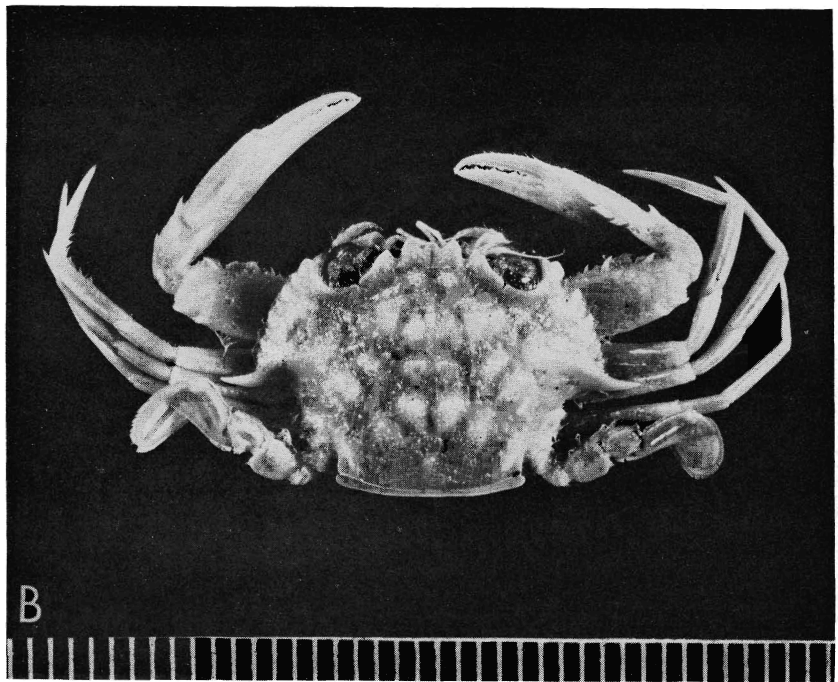
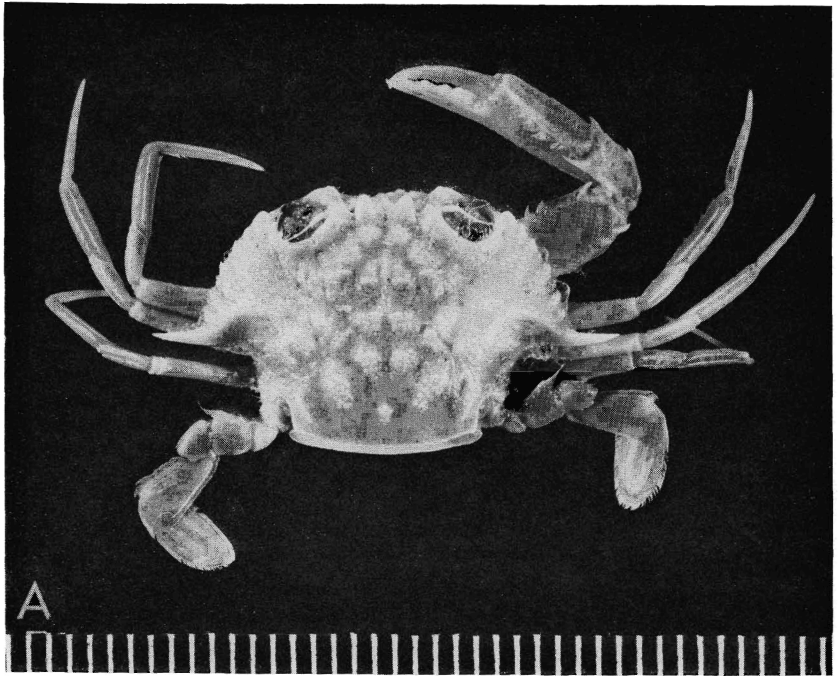


A, *Portunus dubius* (Laurie), male, Philippines, Sta. 5432, *Albatross*. B, *P. euglyphus* (Laurie), male, Philippines, Guijulugan, *Albatross*. (Scale 1 mm.)



A, *Portunus* cf. *rubromarginatus*, juv., Japan, Sta. 5081, *Albatross*. B, *P. rugosus* (A. Milne Edwards), form I, ovig. female, Philippines, Sta. 5157, *Albatross*. (Scale 1 mm.)



*Portunus rugosus* (A. Milne Edwards), form I: A, female, Philippines, Sta. 5182, *Albatross*; B, male, Philippines, Sta. 5159, *Albatross*. (Scale 1 mm.)